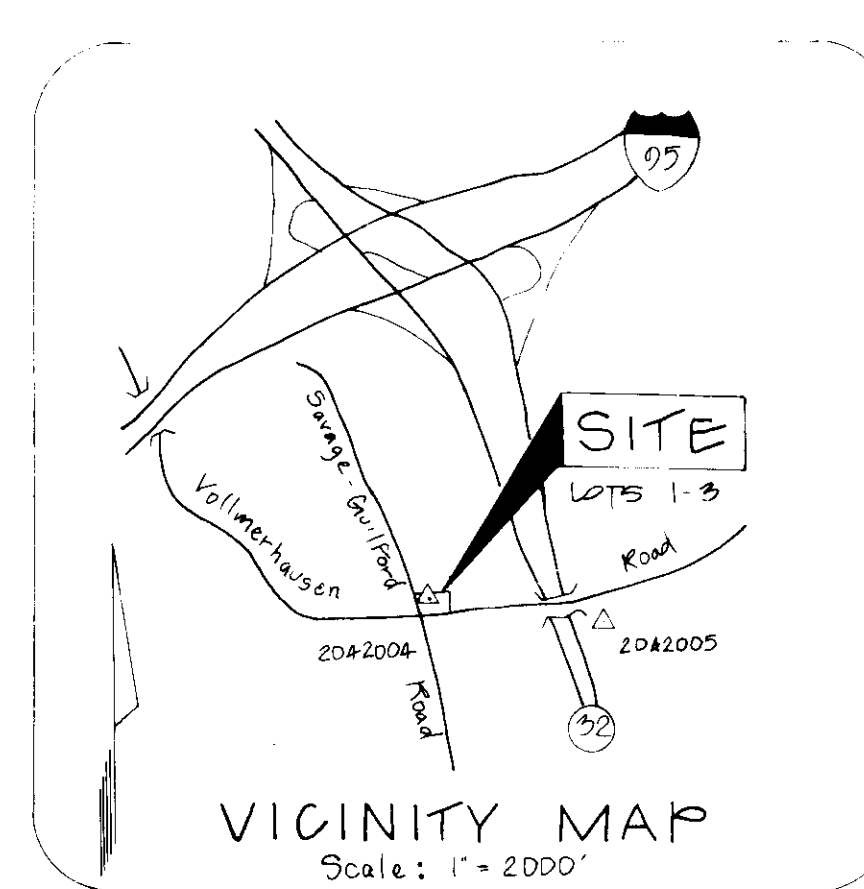


APPROVED FOR PUBLIC WATER AND PUBLIC SEWERAGE SYSTEMS
 HOWARD COUNTY HEALTH DEPARTMENT
 COUNTY HEALTH OFFICER: *James G. ...* DATE: 7-27-89

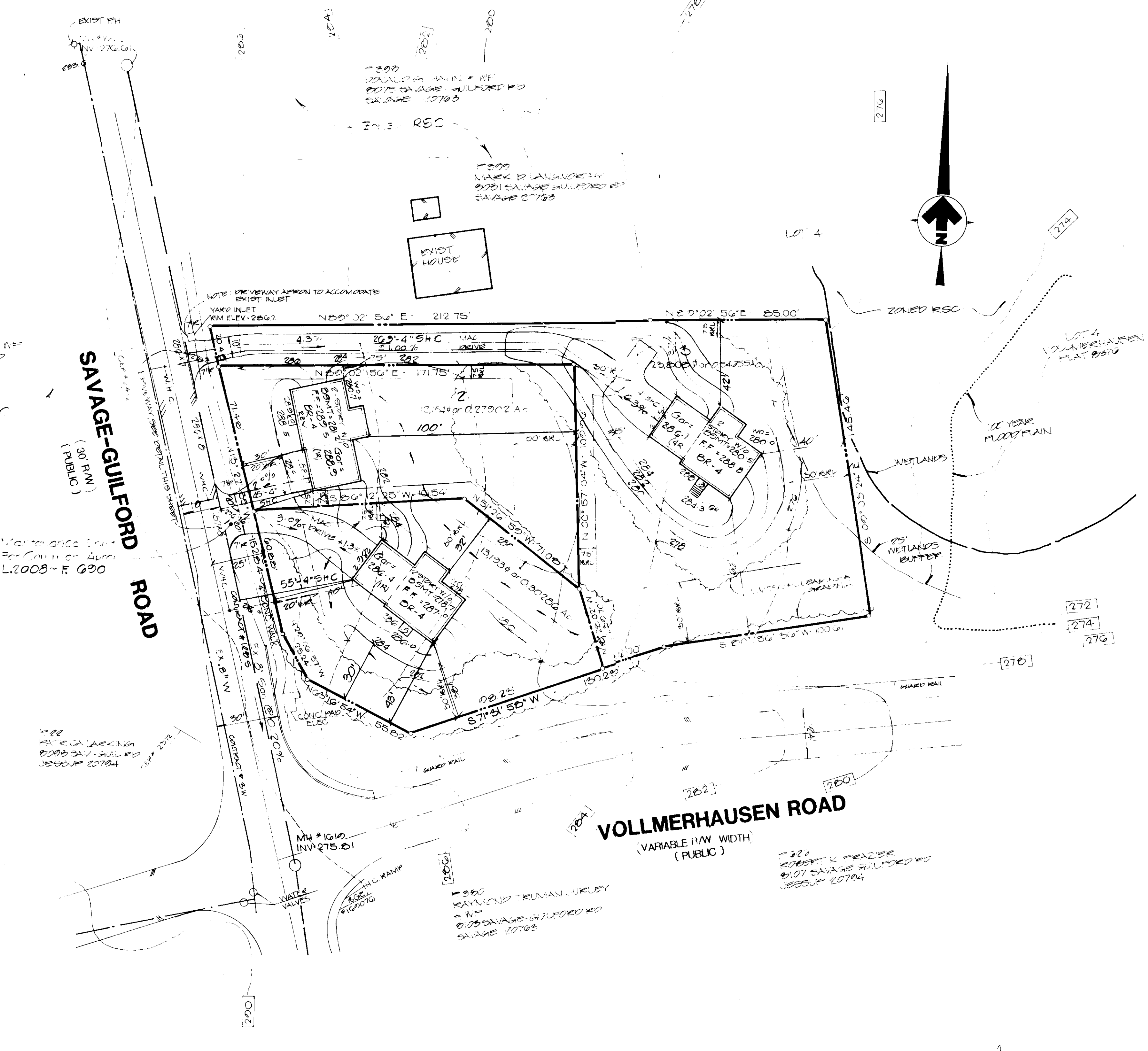
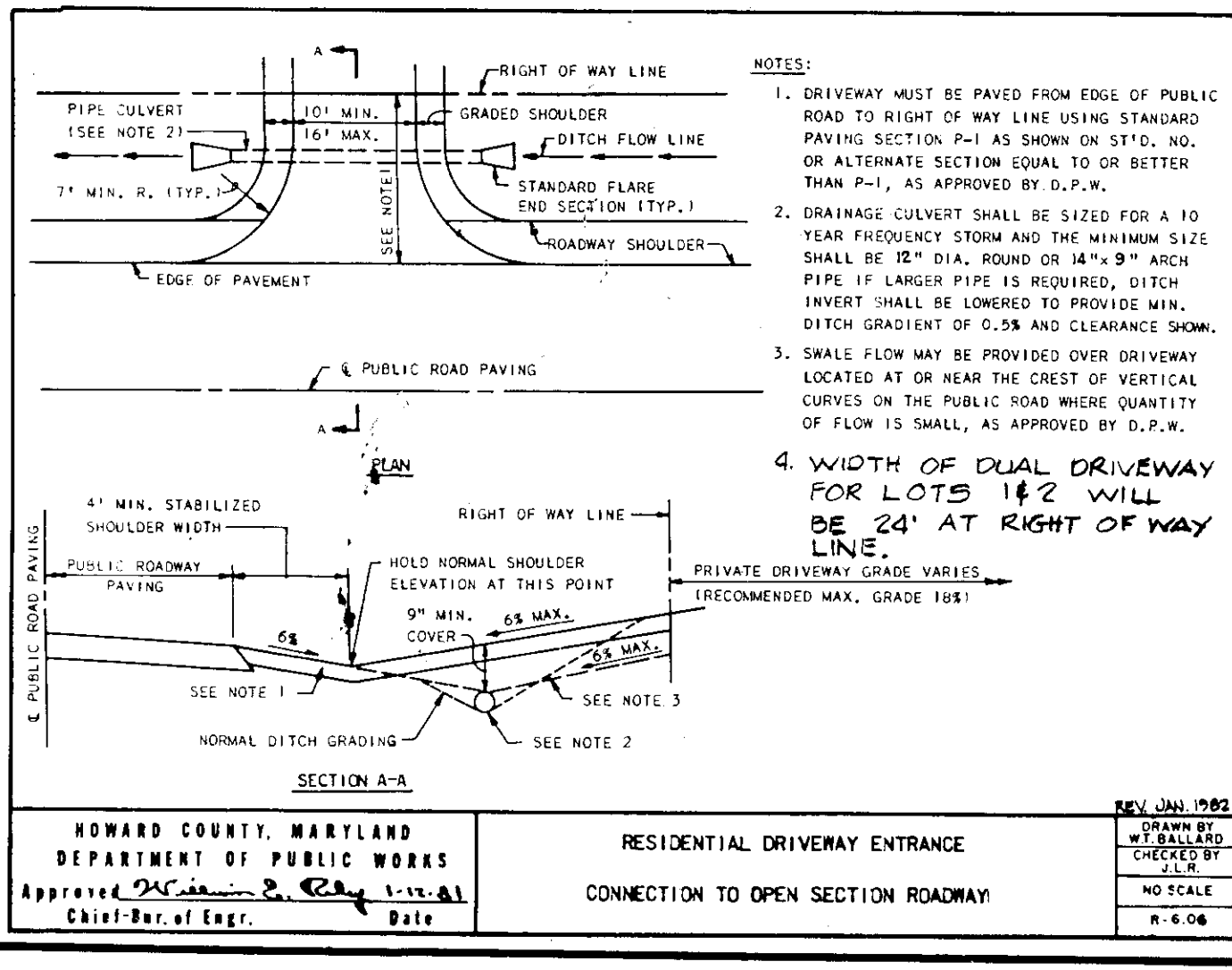
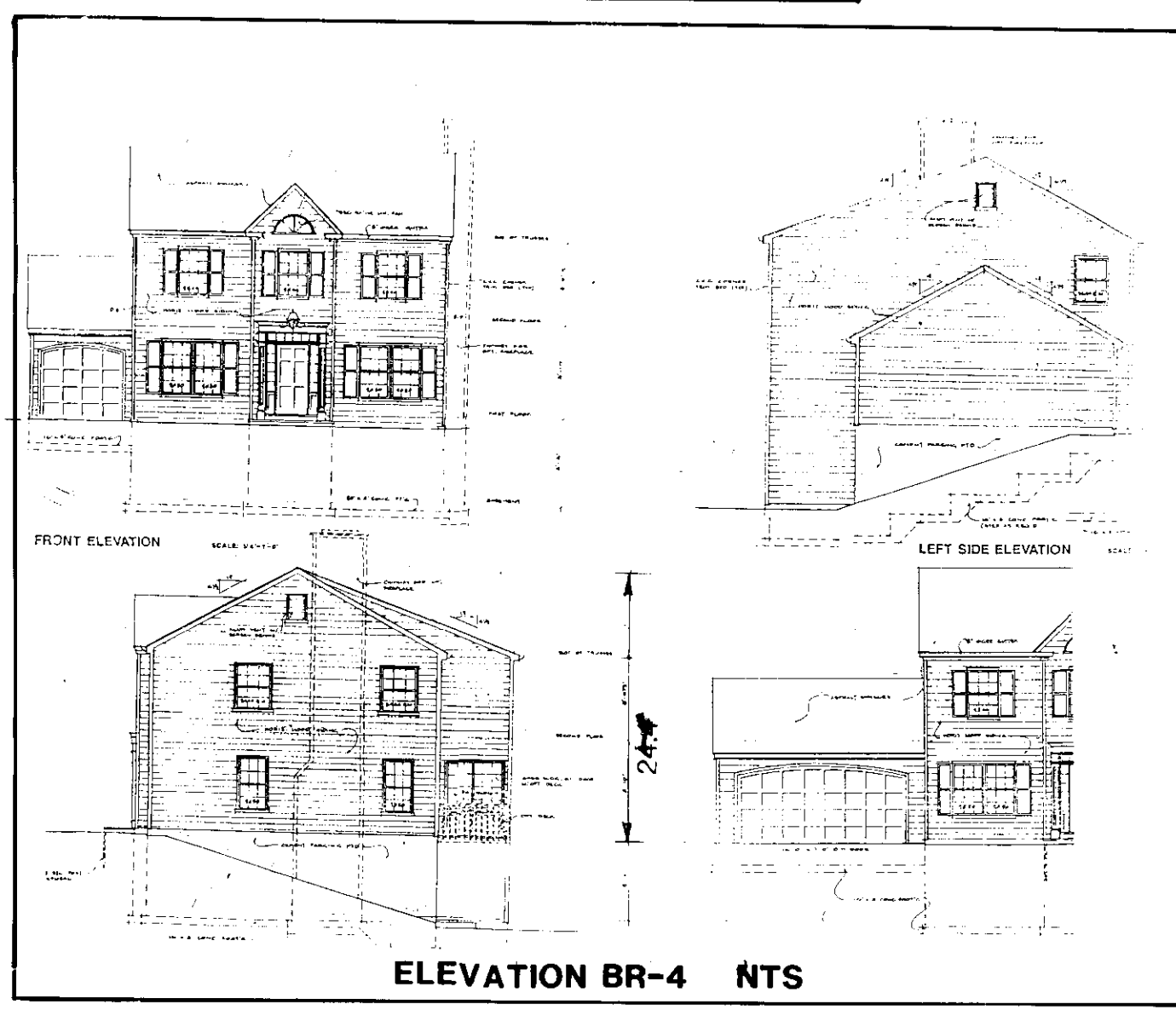
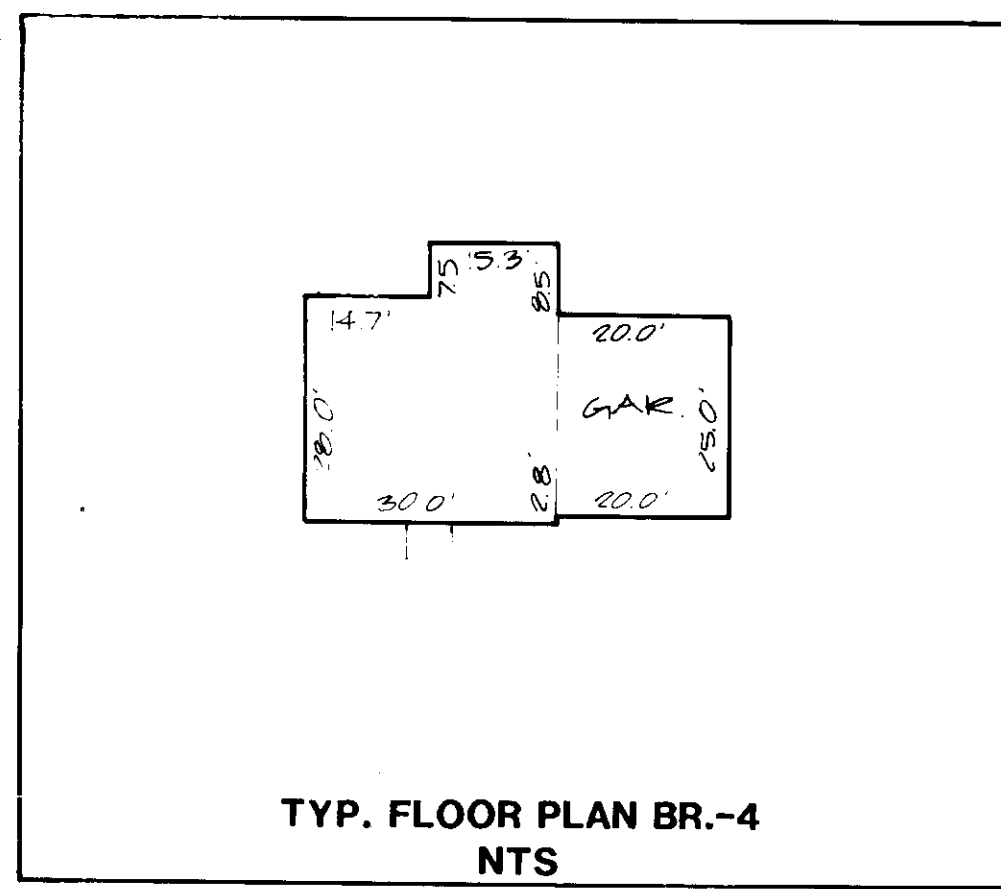
APPROVED: HOWARD COUNTY OFFICE OF PLANNING & ZONING
 DIRECTOR: *James G. ...* DATE: 9-14-89
 Chief, Division of Community Planning and Land Development

APPROVED FOR PUBLIC WATER AND PUBLIC SEWERAGE
 STORM DRAINAGE SYSTEMS AND PUBLIC ROADS
 HOWARD COUNTY DEPARTMENT OF PUBLIC WORKS
 DIRECTOR: *James G. ...* DATE: 7-25-89
 CHIEF BUREAU OF ENGINEERING

7/31/89
 CD



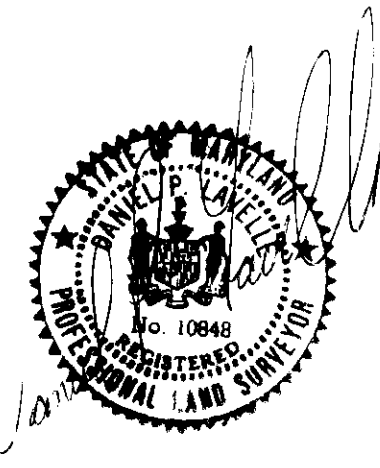
DESIGN	BY	DATE	REVISION
DRAFT	J.K.		
CHECKED	B.		
DATE		3-10-80	
SCALE		1" = 30'	



GENERAL NOTES:
 1) VOLLMERHAUSEN LOTS 1-3 RECORDED AS PLAT NO. 89-76 ON 1/24/80

SITE ANALYSIS:
 1) TOTAL AREA OF LOTS = 40,155 SF OR 1.13 AC
 2) ZONED: RSC PER 8-02-85 COMPREHENSIVE ZONING PLAN.
 3) LOTS 1, 2 & 3 SINGLE FAMILY DETACHED
 4) OPEN SPACE: SEE GENERAL NOTE #76 ON PLAT OF VOLLMERHAUSEN LOTS 1-3 & 4 RECORDED AS PLAT 89-76 ON 1-24-80
 5) BUILDING COVERAGE OF SITE: 3000 ± AREA ± 0.1%

CERTIFIED CORRECT:



OWNER/DEVELOPER

WAYNE NEWSOME
 HEARTH & HOME
 P.O. BOX 39
 COLUMBIA, MD 21045

ADDRESS CHART

LOT NUMBER	STREET ADDRESS
1	8000 SAVAGE-GUILFORD ROAD
2	8000 SAVAGE-GUILFORD ROAD
3	8000 SAVAGE-GUILFORD ROAD

SUBDIVISION NAME VOLLMERHAUSEN	SECT./AREA 47	LOT/PARCEL # LOTS 1-3
PLAT # OR LOT BLOCK # PLAT 89-76	ZONE RSC	ELEC. DIST. 04
WATER CODE C01	SEWER CODE 509.500	

VLB ASSOCIATES, INC.
 ENGINEERS • PLANNERS • SURVEYORS
 9200 WIGHTMAN ROAD SUITE 400
 GAITHERSBURG, MARYLAND 20879
 301-990-0525 • Wash. 948-9439

SITE DEVELOPMENT PLAN
 VOLLMERHAUSEN
 LOTS 1-3
 6TH ELECTION DISTRICT
 HOWARD COUNTY, MARYLAND

APPROVED FOR PUBLIC WATER AND PUBLIC SEWERAGE SYSTEMS
HOWARD COUNTY HEALTH DEPARTMENT

COUNTY HEALTH OFFICER: *Paul Wm* DATE: 2-27-89

APPROVED HOWARD COUNTY OFFICE OF PLANNING & ZONING
DATE: 9-17-89

DIRECTOR: *James P. ...* DATE: 2/16/89

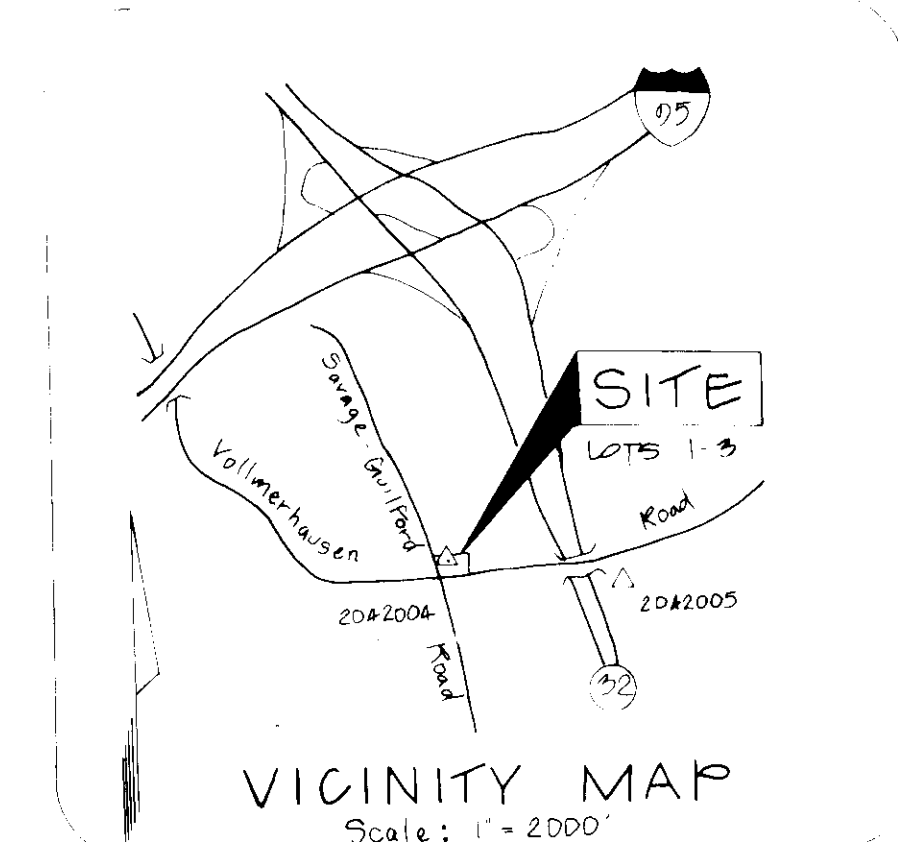
Chief, Division of Community Planning and Land Development

APPROVED FOR PUBLIC WATER AND PUBLIC SEWERAGE, STORM DRAINAGE SYSTEMS AND PUBLIC ROADS
HOWARD COUNTY DEPARTMENT OF PUBLIC WORKS

DIRECTOR: *James P. ...* DATE: 7-25-87

CHIEF BUREAU OF ENGINEERING: *...* DATE: 7-25-87

7/21/89



DESIGN	E
DRAFT	JK
CHECKED	E
DATE	9/10/89
SCALE	1" = 30'

() By the Developer:

"I do certify that all development and construction will be done according to this plan, and that any responsible personnel involved in the construction project will have a Certificate of Attendance at a Department of Natural Resources Approved Training Program for the Control of Sediment and Erosion before beginning the project. I also authorize periodic on-site inspection by the Howard Soil Conservation District."

Signature of Developer: *Wayne Newsome* Date: 6/29/89

() By the Engineer:

"I certify that this plan for erosion and sediment control represents a practical and workable plan based on my personal knowledge of the site conditions and that it was prepared in accordance with the requirements of the Howard Soil Conservation District."

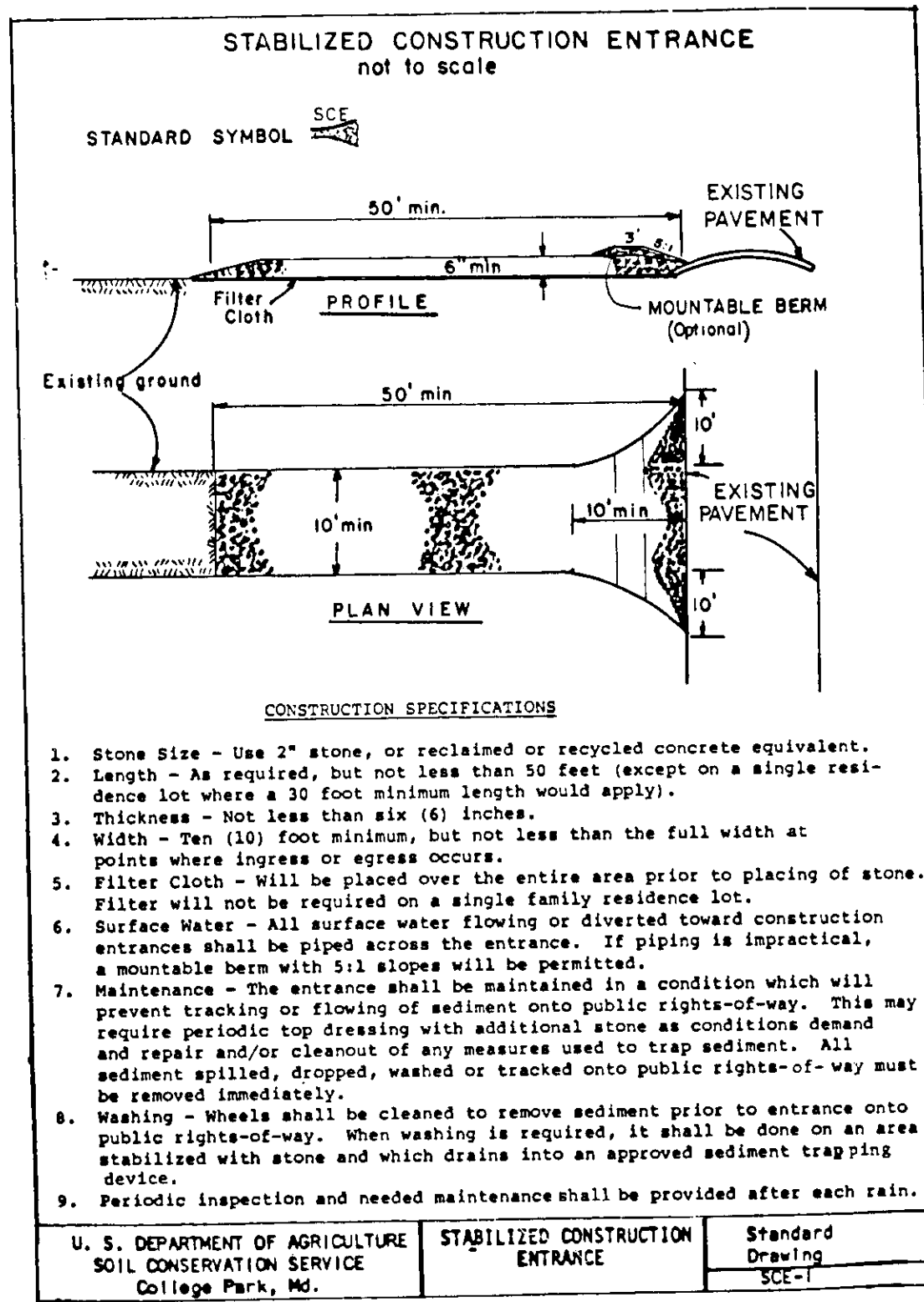
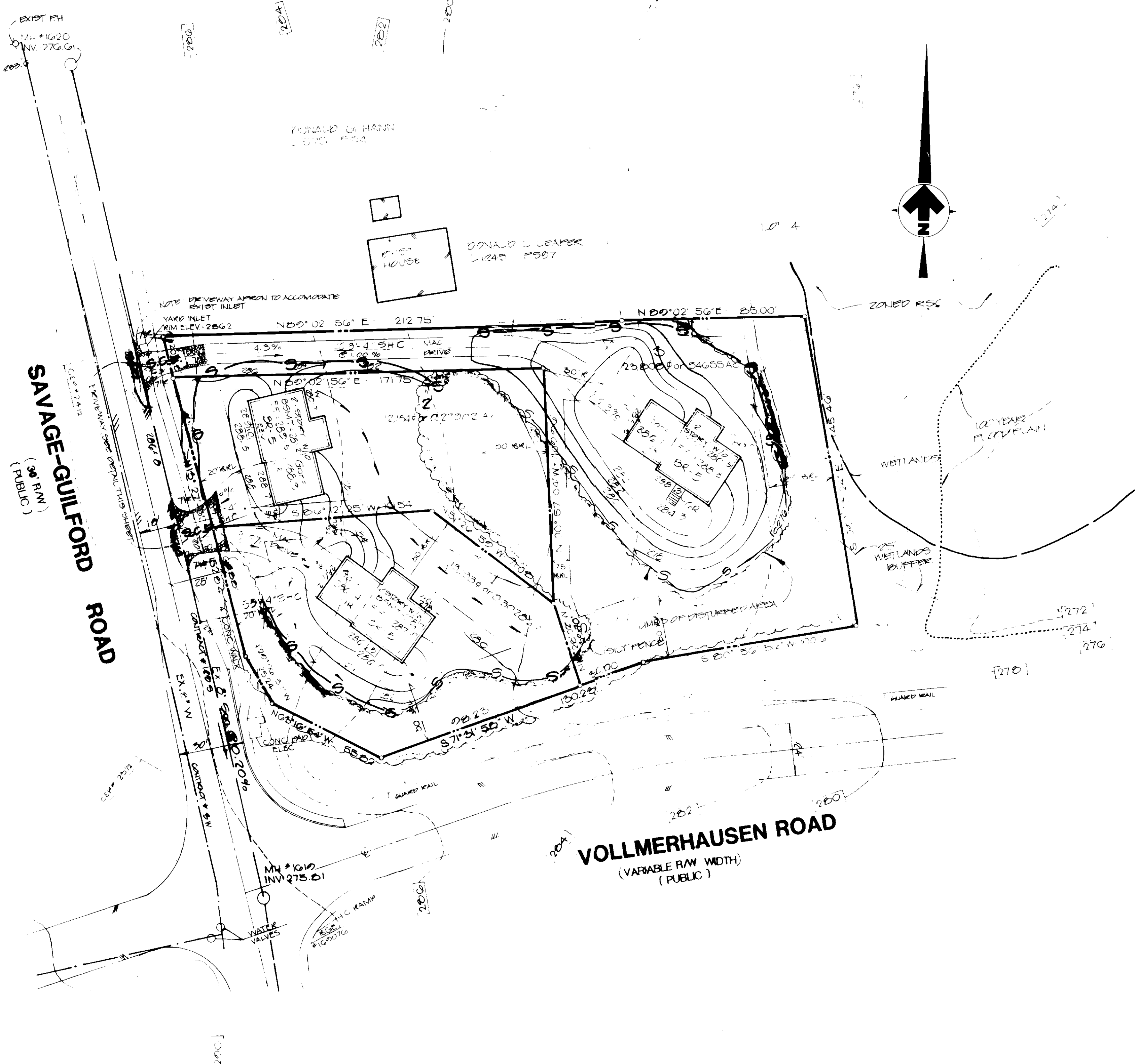
Signature of Engineer: *Daniel L. Lavelle* Date: 6/29/89

() Revisited for HOWARD S.C.D. and meet Technical Requirements of Soil Conservation Service

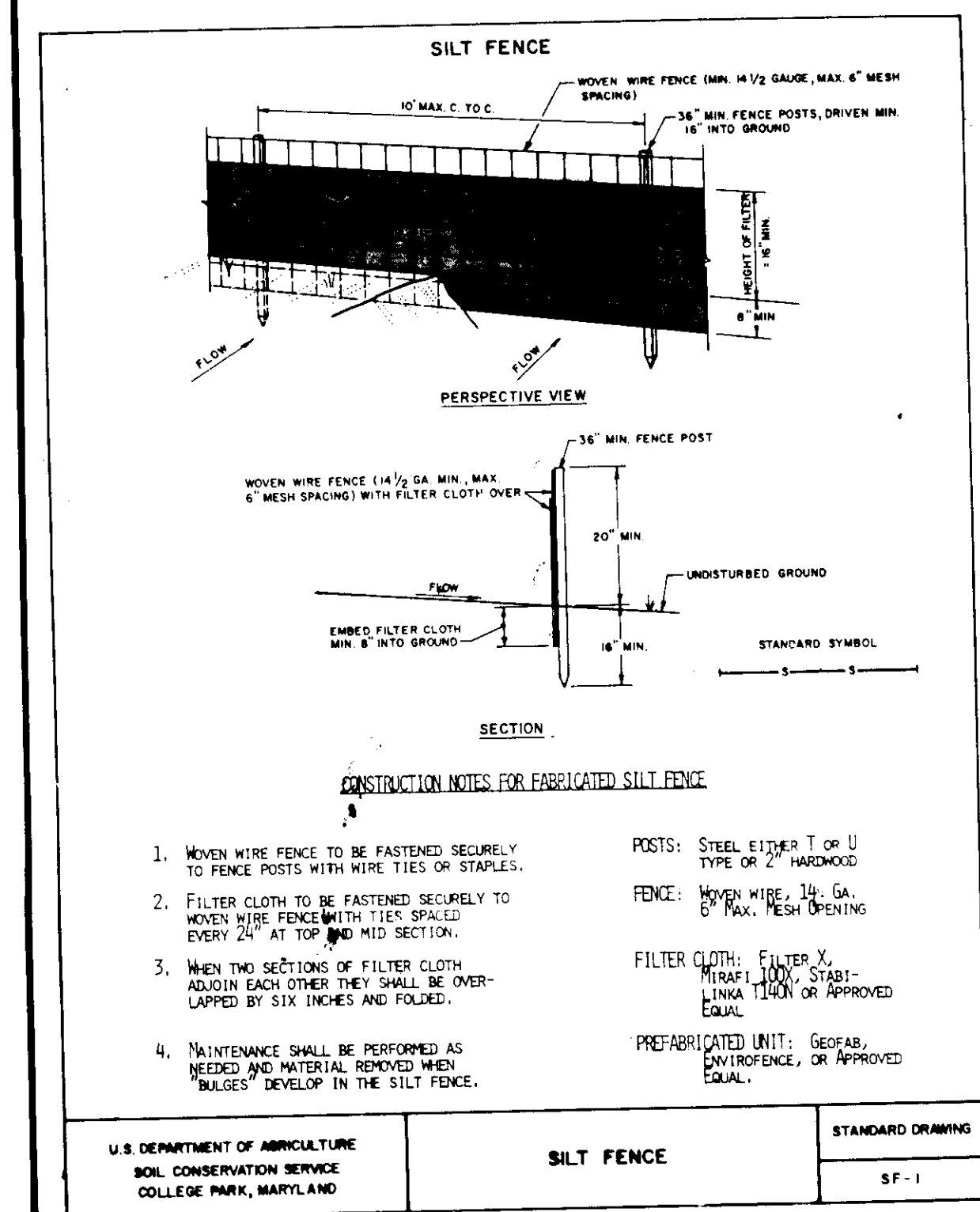
() THIS DEVELOPMENT PLAN IS APPROVED FOR SOIL EROSION AND SEDIMENT CONTROL BY THE HOWARD SOIL CONSERVATION DISTRICT

Robert W. Ziehm 6/29/89
Howard S.C.D.

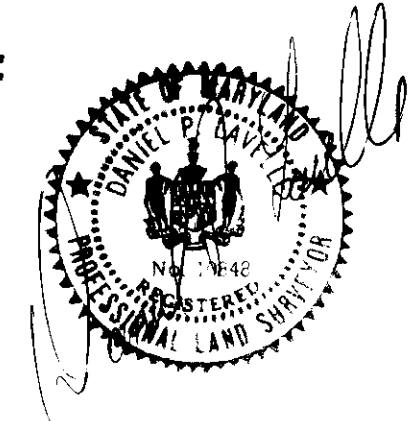
- SEQUENCE OF CONSTRUCTION**
1. OBTAIN PERMITS FOR INSTALLATION OF SEDIMENT CONTROL DEVICES ONLY 1 DAY
 2. CLEAN & GRUB FOR INSTALLATION OF SEDIMENT CONTROL DEVICES ONLY 1 DAY
 3. INSTALL SEDIMENT CONTROL DEVICES 1 DAY
 4. CONSTRUCT LIMITS 3 MONTHS
 5. STABILIZE SITE 1 WEEK
 6. REMOVE SEDIMENT CONTROL DEVICES AND STABILIZE 1 DAY



REVISION	NO	DATE	BY



CERTIFIED CORRECT:



OWNER/DEVELOPER

WAYNE NEWSOME
HEARTH & HOME
P.O. BOX 39
COLUMBIA, MD 21045

FLP ASSOCIATES, INC.
ENGINEERS • PLANNERS • SURVEYORS
9200 WIGHTMAN ROAD SUITE 400
GAITHERSBURG, MARYLAND 20878
301-950-0525 • WASH. 948-9439

SOIL & EROSION CONTROL PLAN
VOLLMERHAUSEN
LOTS 1-3
6TH ELECTION DISTRICT
HOWARD COUNTY, MARYLAND

2 OF 2

89-023

9DP-89-176