

PERMISSION TO MODIFY EXISTING SWM POND GRANTED AS PER EASEMENT DATED 11/8/89.  
 10/19/89  
 2081 to 154

CALL M195 UTILITY 1-800-297-7777  
 FOR UTILITY LOCATIONS AT  
 LEAST 48 HOURS PRIOR TO  
 BEGINNING CONSTRUCTION

VICINITY MAP  
 SCALE: 1" = 2,000'

- General Notes
- All material and construction shall be in accordance with Howard County Road Construction Code and Specifications.
  - This plan is covered by final plan # 88-44.
  - Any damage to county owned rights of way to be corrected at the developer's expense.
  - Installation of traffic control devices shall be in accordance with the latest edition of the "Manual of Uniform Traffic Control."
  - Topography was compiled from actual field survey performed by Kilde Consultants, Inc. dated March 1997.
  - The area shown is located on Tax Map No. 24 Parcel 800 & 802.
  - All driveways to be privately owned and maintained.
  - All coordinates are based on Howard County Geodetic Control Survey Traverse which is based on the Maryland State Plane Coordinate System.
  - Class "C" trench bedding shall be used under all storm drains unless shown otherwise.
  - Information concerning underground utilities was obtained from available records, but the contractor must determine the exact location by digging test pits, by hand, at all utility crossings, well in advance of construction.
  - The contractor/developer shall contact the Construction Inspection Survey Division 24 hours in advance of work at 992-2417 or 792-7272.
  - The developer agrees to coordinate with the Department of Licenses and Inspections to resolve any problems caused by roof water discharge.
  - All downspout drains to splash blocks.
  - Stormwater Management provided under F-88-44.
  - See also: S-88-09, P-88-57, F-88-124, WP-88-99.
  - All curb & gutter installed inside public right of way to be Howard County Std. 7" curb & gutter.
  - Waiver Request WP-89-99 from Section 1018.1 of the Howard County Code. Approved 6/7/89.
  - All work shall be done in accordance with the Howard County Volume IV Standards, Specifications and Details for Public Works.
  - NOTE: THE DISTRICT ENGINEER'S OFFICE HAS REVIEWED THIS PLAN AND APPROVED IT FOR CONSTRUCTION. HOWEVER, THE DISTRICT ENGINEER'S OFFICE DOES NOT GUARANTEE THE ACCURACY OF THE INFORMATION SHOWN ON THIS PLAN.
  - F-88-194 HAS BEEN RECORDED AMONG THE LAND RECORDS OF H.C. AS PLAT 2155 1/25/89 AND REF. 15/190.

- Site Analysis
- Zoning: R-20
  - Area of site: 6.656 AC. (including 10' x 80' x 10' OPEN SPACE TO BE SET AS TOTAL 10' x 80' x 10' OPEN SPACE)
  - Number of lots: 12
  - Limits of submission shall be the limit of disturbance as shown on this plan.
  - Sediment control shown as existing is approved under plan F-88-144.
  - Building coverage = 0.476 AC. (20770.66 SF = 7100 SF)

APPROVED FOR PUBLIC WATER AND PUBLIC BEVERAGE SYSTEMS  
 HOWARD COUNTY HEALTH DEPARTMENT  
*Joyce M. Boyd* 2-20-90  
 COUNTY HEALTH OFFICER DATE

APPROVED: HOWARD COUNTY DEPARTMENT OF PLANNING & ZONING  
*John J. ...* 4-2-90  
 Chief, Division of (County) Planning and Land Development DATE

APPROVED FOR PUBLIC WATER AND PUBLIC BEVERAGE  
 STORM DRAINAGE SYSTEMS AND PUBLIC ROADS  
 HOWARD COUNTY DEPARTMENT OF PUBLIC WORKS  
*James P. ...* 2/12/90  
 DISTRICT ENGINEER DATE

OWNER/DEVELOPER	TEMORA MANOR	LOT	12-22
TEMORA LIMITED PARTNERSHIP	9308 HILLTOP COURT	PLAT NO. OR L/P	2155 & 9136
LAUREL MARYLAND 20707		BLOCK NO.	23
(301)953-7676		ZONE	R-20
		TAXZONE MAP	24
		ELEC. DIST.	2
		CENSUS TR.	CC02E.01
		WATER CODE	FOB
		SEWER CODE	S75(G)

**SITE DEVELOPMENT PLAN**  
**TEMORA MANOR**  
 LOTS 12 THRU 22 + OPEN SPACE LOT 23  
 (A RESUBDIVISION OF LOT 10, TEMORA PLAT #556B)  
 TAX MAP 24 PARCEL 300 # 802  
 2<sup>ND</sup> ELECTION DISTRICT  
 HOWARD COUNTY, MARYLAND

**KILDE CONSULTANTS, INC.**

ENGINEERS • PLANNERS • SURVEYORS  
 3992 BALTIMORE AVENUE / LAUREL, MD 20707  
 (301) 251-1111

DATE	REVISION	BY
3-16-92	Revised Lot 17	SK
3-2-92	REVISED LOT 14	SK
3-2-92	REV LOT 12	SK

DATE OCT, 1989

LEGEND

- WHC FROM R. TO HOUSE
- SHC FROM R. TO HOUSE

REVIEWED FOR HOWARD SOIL CONSERVATION AND MEETS TECHNICAL REQUIREMENTS

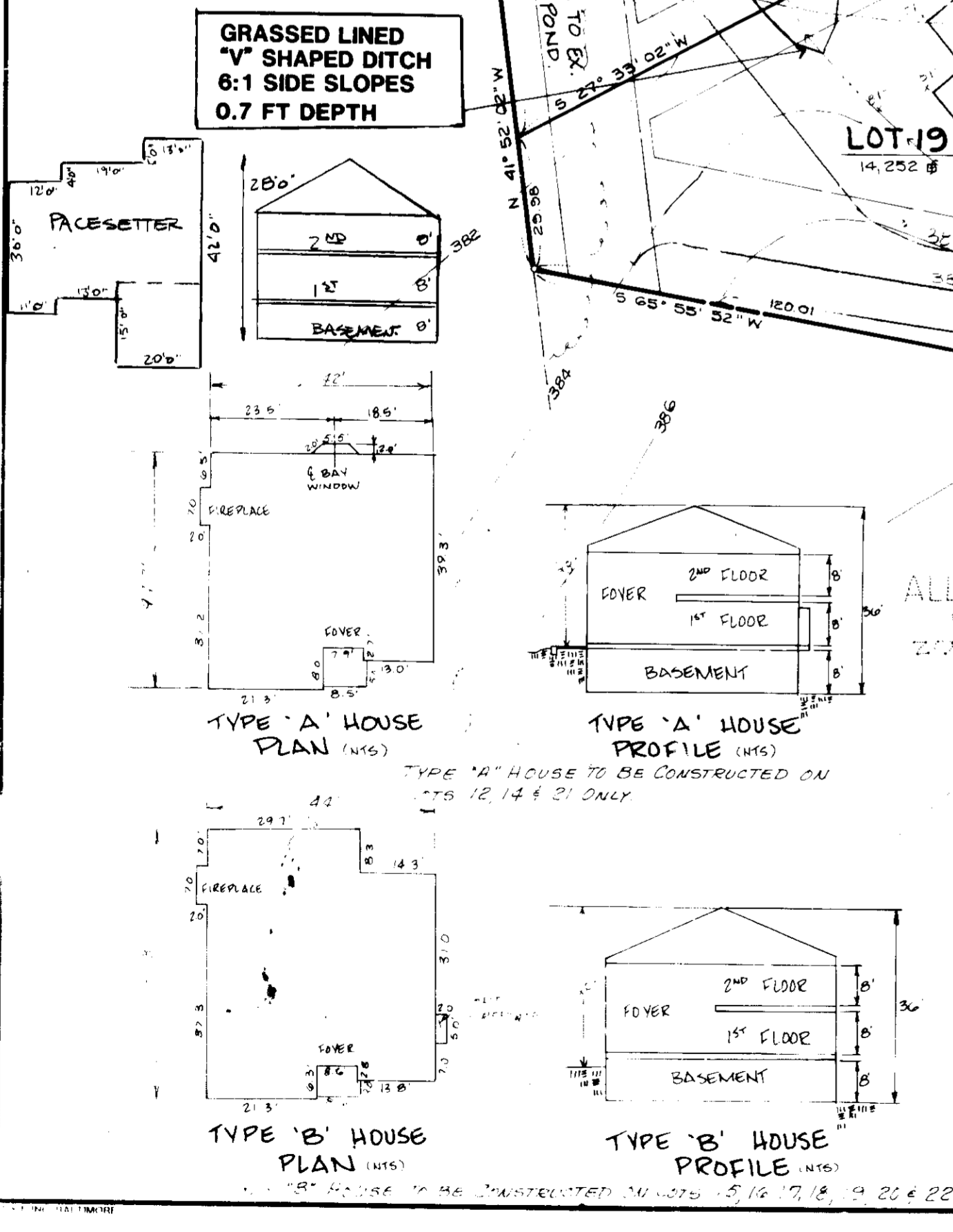
*Joyce M. Boyd* 2/12/90  
 SOIL CONSERVATION SERVICE DATE

THIS DEVELOPMENT PLAN IS APPROVED FOR SOIL EROSION & SEDIMENT CONTROL BY THE HOWARD SOIL CONSERVATION DISTRICT.

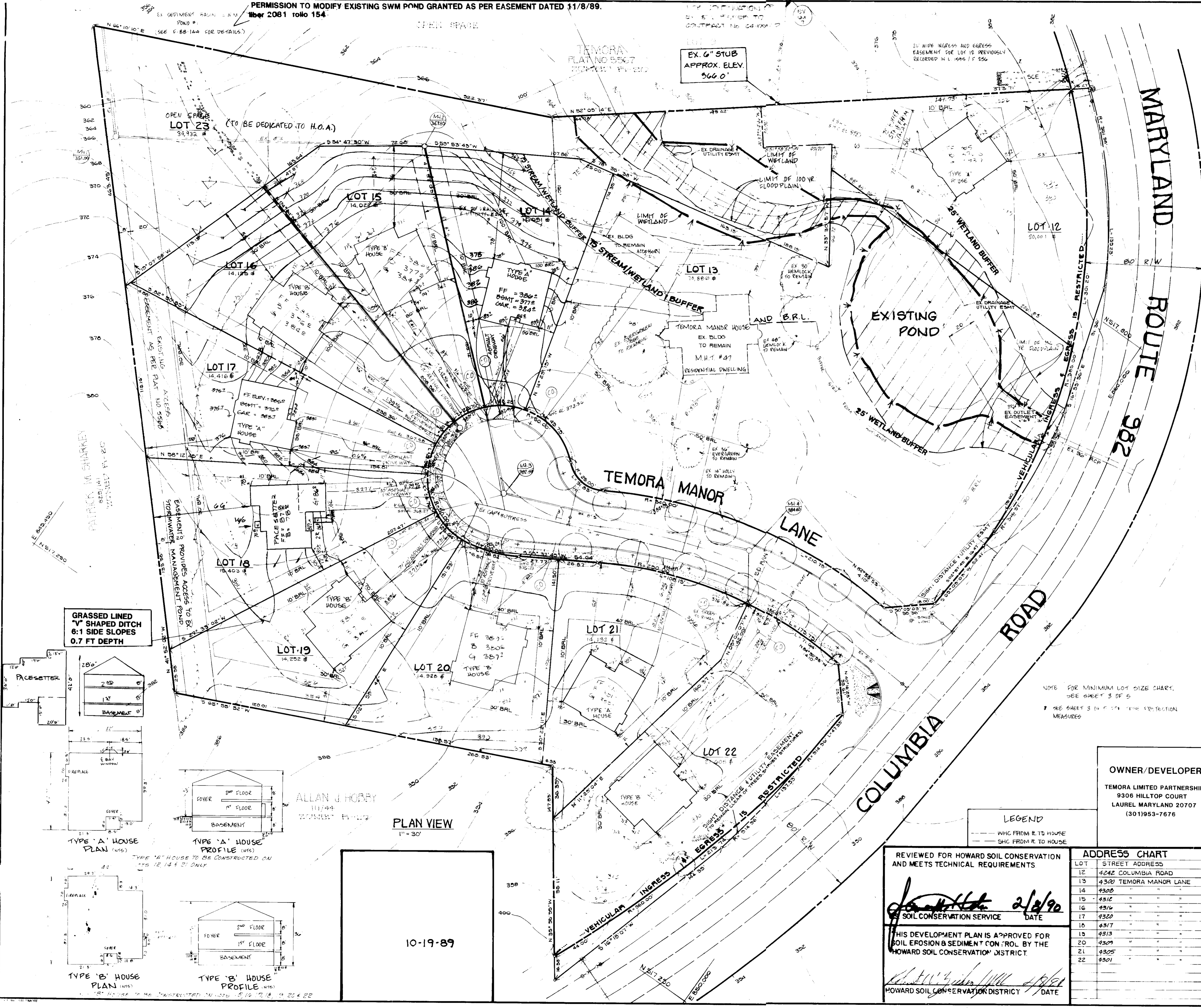
*John J. ...* 2/12/90  
 HOWARD SOIL CONSERVATION DISTRICT DATE

ADDRESS CHART

LOT	STREET ADDRESS
12	4242 COLUMBIA ROAD
13	4300 TEMORA MANOR LANE
14	4306
15	4312
16	4316
17	4320
18	4317
19	4313
20	4309
21	4305
22	4301



10-19-89



**SEDIMENT TRAP AND TEMPORARY SWM FACILITY #1**  
See Specifications This Sheet

VICINITY MAP  
SCALE: 1" = 2,000'

APPROVED: FOR PUBLIC WATER AND PUBLIC SEWERAGE SYSTEMS,  
HOWARD COUNTY HEALTH DEPARTMENT  
*James M. Johnson* 2-28-90  
COUNTY HEALTH OFFICER DATE

APPROVED: HOWARD COUNTY DEPARTMENT OF PLANNING & ZONING  
*James M. Johnson* 4-2-90  
DIRECTOR DATE

APPROVED: FOR PUBLIC WATER AND PUBLIC SEWERAGE  
STORM DRAINAGE SYSTEMS AND PUBLIC ROADS  
HOWARD COUNTY DEPARTMENT OF PUBLIC WORKS  
*James M. Johnson* 2-17-90  
DIRECTOR DATE

*William S. Day* 2-12-90  
CHIEF BUREAU OF ENGINEERING DATE

Sequence Of Construction

1. Obtain revised grading permit. 1 day
2. Utilize all sediment control devices installed under F-88-144, for conversion of Sediment Basin to permanent SWM use.
3. Install all additional sediment control devices including earth dikes and silt fence. 4 days
4. Grade the site as per the grading plan. 4 weeks
5. Construct houses. 2 months
6. Install water and sewer house connections.
7. Fine grade the site. 2 weeks
8. Stabilize any disturbed areas. 5 days
9. With permission of the sediment control inspector remove all sediment control devices and immediately stabilize any remaining disturbed areas with Kentucky 31 Tall Fescue.

**SEDIMENT TRAP AND TEMPORARY SWM FACILITY #1**

TRAP TYPE: RIP RAP  
DRAINAGE AREA: .44 ACRES MAX.  
STORAGE REQ: 1,669.07 ft<sup>3</sup>  
PROV: 1,716.00 ft<sup>3</sup>  
WEIR LENGTH: 4.0'  
BOTTOM ELEV: 370.00'  
TOP EMBANKMENT ELEV: 374.00'  
OUTLET ELEV: 373.00'  
BOTTOM DIMENSION: 14' x 22'  
CLEANOUT ELEV: 371.50'  
2 YR. W.S.E.L: 373.14'  
10 YR. W.S.E.L: 373.24'

OWNER/DEVELOPER  
TEMORA LIMITED PARTNERSHIP  
9306 HILLTOP COURT  
LAUREL MARYLAND 20707  
(301)953-7676

**GRADING & SEDIMENT CONTROL**  
**TEMORA MANOR**  
LOTS 12 THRU 22 & OPEN SPACE LOT 23  
(A RESUBDIVISION OF LOT 10, TEMORA PLAT #2568)  
TAX MAP 24 PARCEL 300 & 302  
2<sup>ND</sup> ELECTION DISTRICT  
HOWARD COUNTY, MARYLAND

**KIDDE CONSULTANTS, INC.**  
ENGINEERS • PLANNERS • SURVEYORS  
15992 BALTIMORE AVENUE / LAUREL, MD 20707  
(WEEK END OFFICE) 301-787-7400, HOME 787-7400

LEGEND  
SILT FENCE  
STRAW BALE DIKE  
LIMITS OF DISTURBANCE  
EARTH DIKE  
STABILIZE CONSTRUCTION ENTRANCE

REVIEWED FOR HOWARD SOIL CONSERVATION AND MEETS TECHNICAL REQUIREMENTS

*James M. Johnson* 2/3/90  
U.S. SOIL CONSERVATION SERVICE DATE

THIS DEVELOPMENT PLAN IS APPROVED FOR SOIL EROSION & SEDIMENT CONTROL BY THE HOWARD SOIL CONSERVATION DISTRICT.

*Robert W. Zickler* 10/24/89  
HOWARD SOIL CONSERVATION DISTRICT DATE

ENGINEERS CERTIFICATE  
"I CERTIFY THAT THIS PLAN FOR EROSION & SEDIMENT CONTROL REPRESENTS A PRACTICAL AND WORKABLE PLAN BASED ON MY PERSONAL KNOWLEDGE OF THE SITE CONDITIONS AND THAT IT WAS PREPARED IN ACCORDANCE WITH THE REQUIREMENTS OF THE HOWARD SOIL CONSERVATION DISTRICT."

*James M. Johnson*  
ENGINEERS SIGNATURE DATE

DEVELOPER CERTIFICATE  
"I/WE CERTIFY THAT ALL DEVELOPMENT & CONSTRUCTION WILL BE DONE ACCORDING TO THIS PLAN, AND THAT ANY RESPONSIBLE PERSONNEL INVOLVED IN THE CONSTRUCTION PROJECT WILL HAVE A CERTIFICATE OF ATTENDANCE AT A DEPARTMENT OF NATURAL RESOURCES APPROVED TRAINING PROGRAM FOR THE CONTROL OF SEDIMENT & EROSION BEFORE BEGINNING THE PROJECT. I ALSO AUTHORIZE PERIODIC ON-SITE INSPECTION BY THE HOWARD SOIL CONSERVATION DISTRICT."

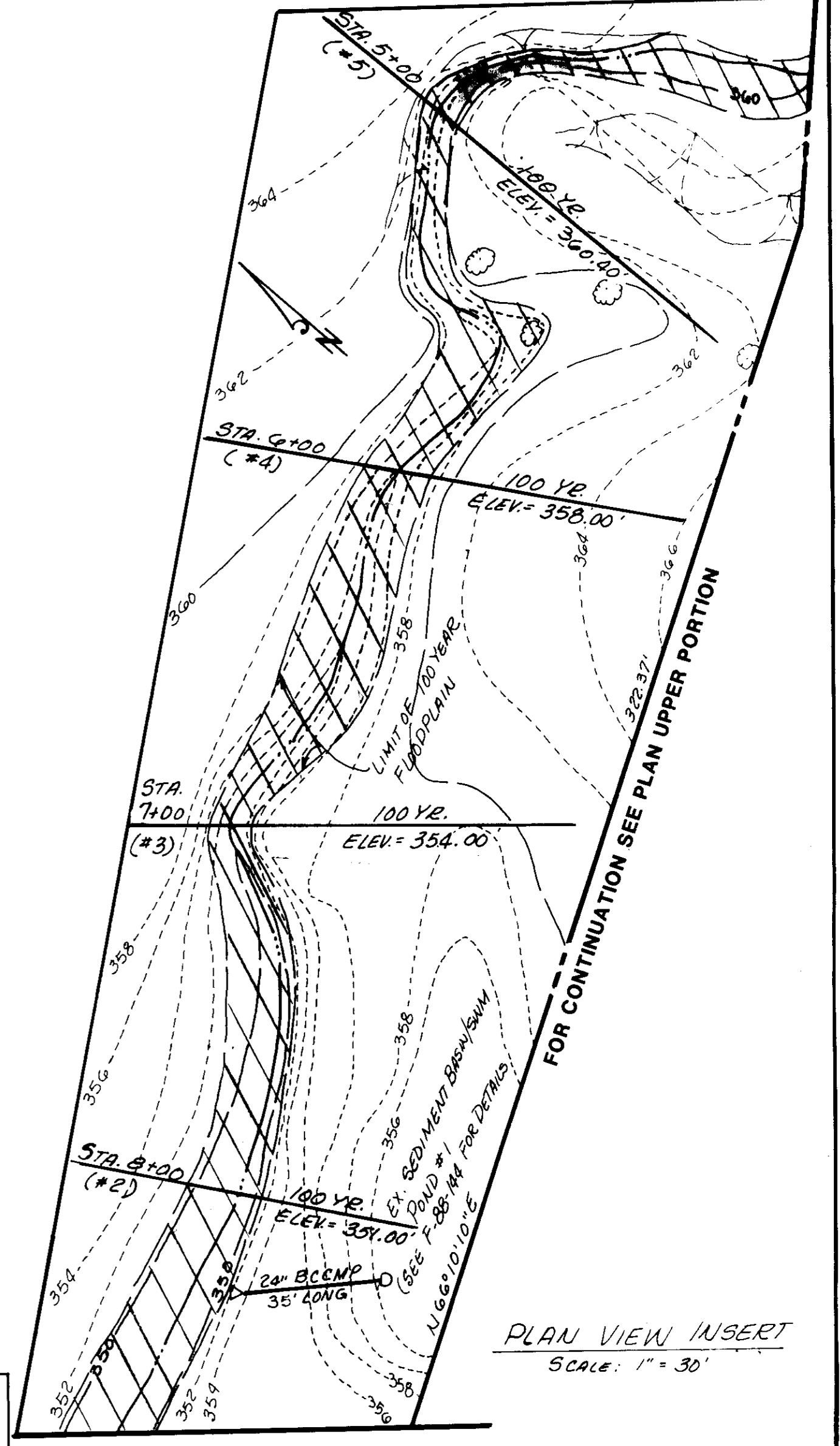
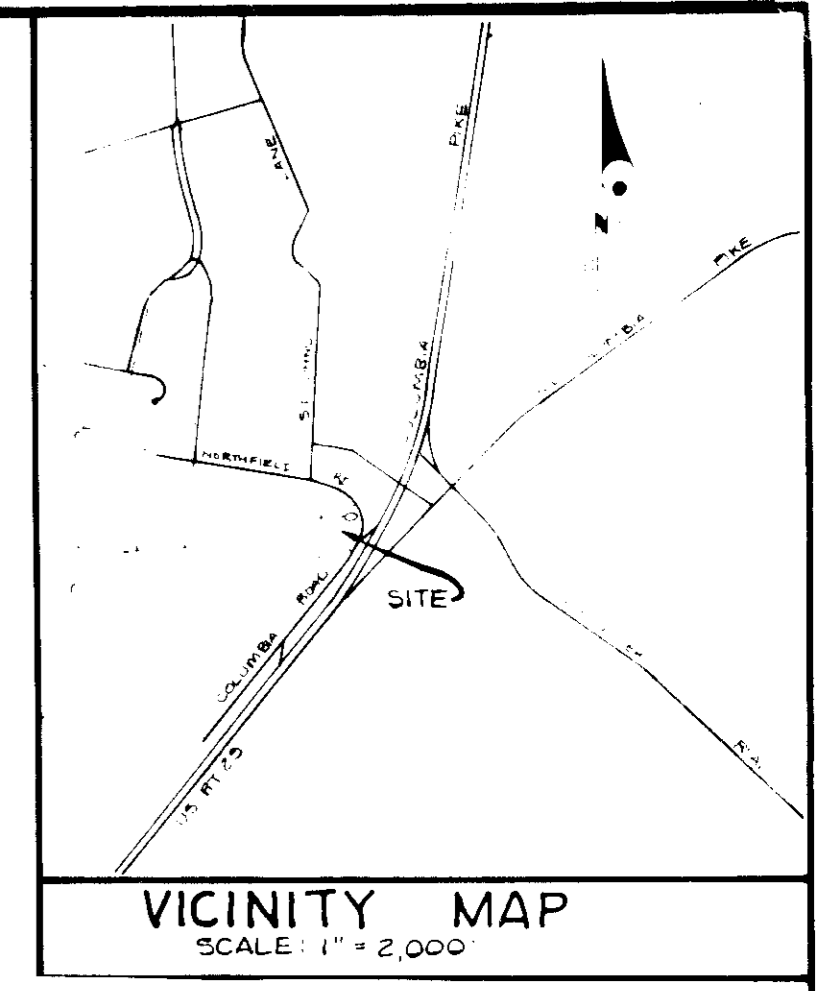
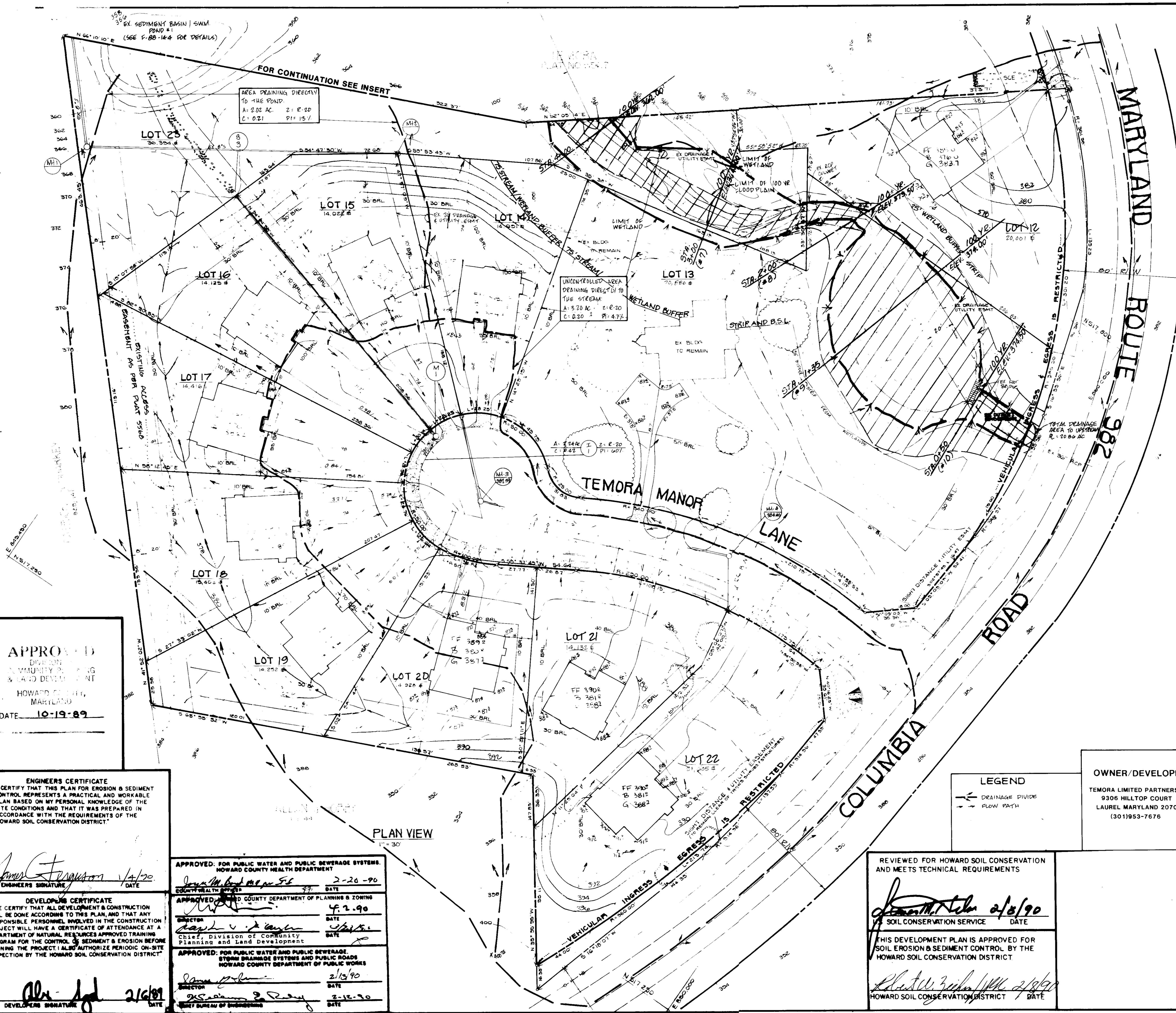
*Alan J. Horry* 2/6/89  
DEVELOPER SIGNATURE DATE

APPROVED

DATE 10-19-89

PLAN VIEW  
1" = 30'





**APPROVED**  
 DIVISION OF COMMUNITY PLANNING & LAND DEVELOPMENT  
 HOWARD COUNTY, MARYLAND  
 DATE 10-19-89

**ENGINEERS CERTIFICATE**  
 "I CERTIFY THAT THIS PLAN FOR EROSION & SEDIMENT CONTROL REPRESENTS A PRACTICAL AND WORKABLE PLAN BASED ON MY PERSONAL KNOWLEDGE OF THE SITE CONDITIONS AND THAT IT WAS PREPARED IN ACCORDANCE WITH THE REQUIREMENTS OF THE HOWARD SOIL CONSERVATION DISTRICT."

*James L. Stinson* 1/4/90  
 ENGINEERS SIGNATURE DATE

**DEVELOPER'S CERTIFICATE**  
 "I/WE CERTIFY THAT ALL DEVELOPMENT & CONSTRUCTION WILL BE DONE ACCORDING TO THIS PLAN, AND THAT ANY RESPONSIBLE PERSONNEL INVOLVED IN THE CONSTRUCTION PROJECT WILL HAVE A CERTIFICATE OF ATTENDANCE AT A DEPARTMENT OF NATURAL RESOURCES APPROVED TRAINING PROGRAM FOR THE CONTROL OF SEDIMENT & EROSION BEFORE BEGINNING THE PROJECT. I ALSO AUTHORIZE PERIODIC ON-SITE INSPECTION BY THE HOWARD SOIL CONSERVATION DISTRICT."

*Alan J. ...* 2/16/89  
 DEVELOPER'S SIGNATURE DATE

**APPROVED: FOR PUBLIC WATER AND PUBLIC BEVERAGE SYSTEMS**  
 HOWARD COUNTY HEALTH DEPARTMENT  
 DATE 2-20-90

**APPROVED: HOWARD COUNTY DEPARTMENT OF PLANNING & ZONING**  
 DATE 4-2-90

**APPROVED: FOR PUBLIC WATER AND PUBLIC BEVERAGE SYSTEMS DRAINAGE SYSTEMS AND PUBLIC ROADS**  
 HOWARD COUNTY DEPARTMENT OF PUBLIC WORKS  
 DATE 2-13-90

**APPROVED: HOWARD COUNTY DEPARTMENT OF PUBLIC WORKS**  
 DATE 2-12-90

**LEGEND**  
 - - - DRAINAGE DIVIDE  
 - - - FLOW PATH

**OWNER/DEVELOPER**  
 TEMORA LIMITED PARTNERSHIP  
 9306 HILLTOP COURT  
 LAUREL MARYLAND 20707  
 (301)953-7676

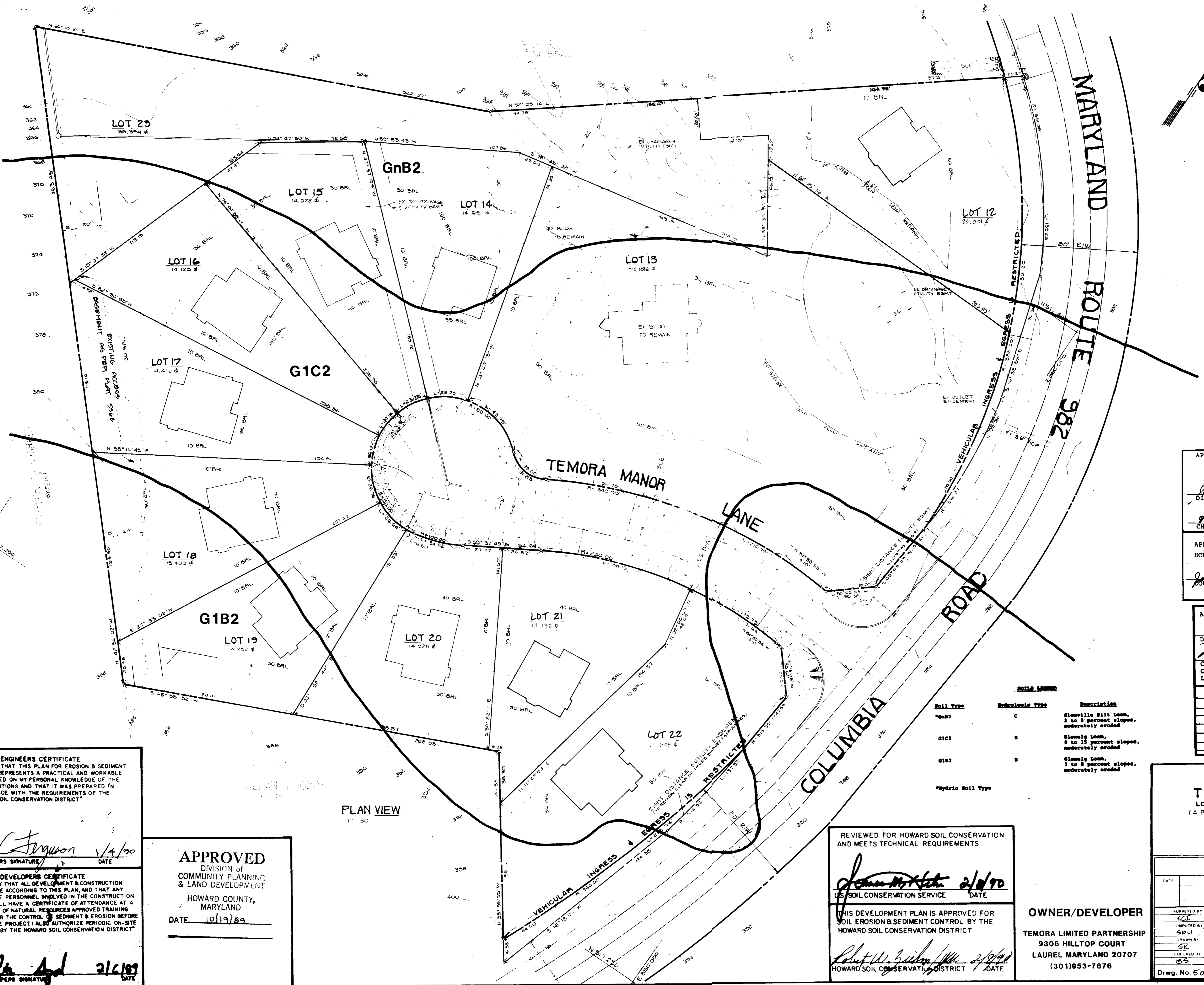
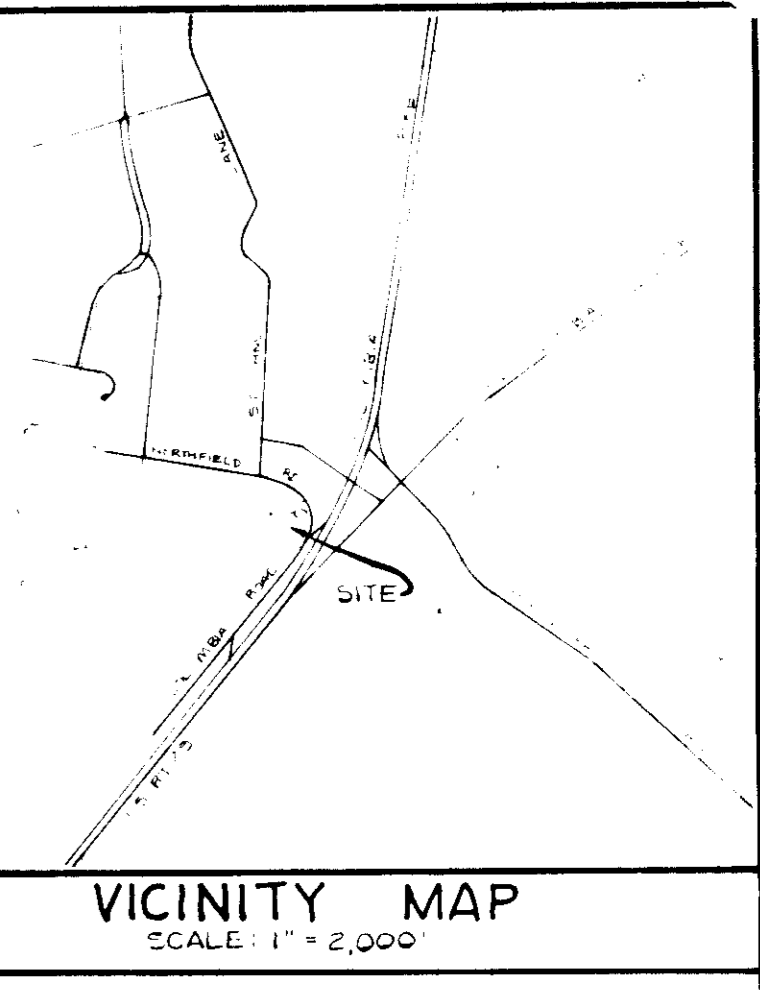
REVIEWED FOR HOWARD SOIL CONSERVATION AND MEETS TECHNICAL REQUIREMENTS  
*James L. Stinson* 2/8/90  
 SOIL CONSERVATION SERVICE DATE

THIS DEVELOPMENT PLAN IS APPROVED FOR SOIL EROSION & SEDIMENT CONTROL BY THE HOWARD SOIL CONSERVATION DISTRICT  
*Robert W. ...* 2/8/90  
 HOWARD SOIL CONSERVATION DISTRICT DATE

**DRAINAGE AREA MAP**  
**TEMORA MANOR**  
 LOTS 12 THRU 22 + OPEN SPACE LOT 25  
 (A RESUBDIVISION OF LOT 10, TEMORA PLAT #5566)  
 TAX MAP 24 PARCEL 300 + 502  
 2<sup>ND</sup> ELECTION DISTRICT  
 HOWARD COUNTY, MARYLAND

**KIDDE CONSULTANTS, INC.**  
 ENGINEERS • PLANNERS • SURVEYORS  
 13992 BALTIMORE AVENUE / LAUREL, MD 20707  
 (301) 251-1821 / FAX: (301) 251-1821

DATE OCT. 1988 SCALE SEE ABOVE  
 Drwg No 40P5



APPROVED: FOR PUBLIC WATER AND PUBLIC SEWERAGE, STORM DRAINAGE SYSTEMS AND PUBLIC ROADS  
 HOWARD COUNTY DEPARTMENT OF PUBLIC WORKS

*[Signature]* 2/3/90  
 DIRECTOR DATE

*[Signature]* 2-12-90  
 CHIEF BUREAU OF ENGINEERING DATE

APPROVED: FOR PUBLIC WATER AND PUBLIC SEWERAGE SYSTEMS  
 HOWARD COUNTY HEALTH DEPARTMENT

*[Signature]* 2-20-90  
 COUNTY HEALTH OFFICER DATE

APPROVED: HOWARD COUNTY DEPARTMENT OF PLANNING & ZONING

*[Signature]* 4-2-90  
 DIRECTOR DATE

*[Signature]* 4/2/90  
 CHIEF, DIVISION OF COMMUNITY PLANNING AND LAND DEVELOPMENT DATE

REVISION CHART	
DATE	REVISION

Soil Type	Drainage Type	Description
G1B2	C	Glennville Silt Loam, 3 to 8 percent slopes, moderately eroded
G1C2	B	Glennville Loam, 8 to 13 percent slopes, moderately eroded
G1B2	B	Glennville Loam, 3 to 8 percent slopes, moderately eroded
Hydric Soil Type		

**SOILS MAP**  
**TEMORA MANOR**  
 LOTS 12 THRU 22 & OPEN SPACE LOT 25  
 (A RESUBDIVISION OF LOT 10, TEMORA PLAT #5568)  
 TAX MAP 24 PARCEL 300 & 302  
 2<sup>ND</sup> ELECTION DISTRICT  
 HOWARD COUNTY, MARYLAND

**KIDDE CONSULTANTS, INC.**  
 ENGINEERS • PLANNERS • SURVEYORS  
 13992 BALTIMORE AVENUE / LAUREL, MD 20786  
 (301) 953-7676

DATE: OCT, 1988 SCALE: SEE ABOVE  
 Drwg. No. 5085

**ENGINEERS CERTIFICATE**  
 I CERTIFY THAT THIS PLAN FOR EROSION & SEDIMENT CONTROL REPRESENTS A PRACTICAL AND WORKABLE PLAN BASED ON MY PERSONAL KNOWLEDGE OF THE SITE CONDITIONS AND THAT IT WAS PREPARED IN ACCORDANCE WITH THE REQUIREMENTS OF THE HOWARD SOIL CONSERVATION DISTRICT.

*[Signature]* 1/4/90  
 ENGINEERS SIGNATURE DATE

**DEVELOPERS CERTIFICATE**  
 I/WE CERTIFY THAT ALL DEVELOPMENT & CONSTRUCTION WILL BE DONE ACCORDING TO THIS PLAN, AND THAT ANY RESPONSIBLE PERSONNEL INVOLVED IN THE CONSTRUCTION PROJECT WILL HAVE A CERTIFICATE OF ATTENDANCE AT A DEPARTMENT OF NATURAL RESOURCES APPROVED TRAINING PROGRAM FOR THE CONTROL OF SEDIMENT & EROSION BEFORE BEGINNING THE PROJECT. I ALSO AUTHORIZE PERIODIC ON-SITE INSPECTION BY THE HOWARD SOIL CONSERVATION DISTRICT.

*[Signature]* 2/16/89  
 DEVELOPERS SIGNATURE DATE

**APPROVED**  
 DIVISION OF COMMUNITY PLANNING & LAND DEVELOPMENT  
 HOWARD COUNTY, MARYLAND  
 DATE: 10/19/89

REVIEWED FOR HOWARD SOIL CONSERVATION AND MEETS TECHNICAL REQUIREMENTS

*[Signature]* 2/10/90  
 US SOIL CONSERVATION SERVICE DATE

THIS DEVELOPMENT PLAN IS APPROVED FOR SOIL EROSION & SEDIMENT CONTROL BY THE HOWARD SOIL CONSERVATION DISTRICT

*[Signature]* 2/10/90  
 HOWARD SOIL CONSERVATION DISTRICT DATE

**OWNER/DEVELOPER**  
 TEMORA LIMITED PARTNERSHIP  
 9306 HILLTOP COURT  
 LAUREL MARYLAND 20707  
 (301) 953-7676