

**LEGEND**

- Contour Interval 2 FT
- Existing Contour
- Proposed Contour
- Spot Elevation +10.5'
- Direction of Drainage
- Walk out Basement
- Trees to be Saved

**SPECIAL NOTES**

1. Approved Road Construction Plans shall be used for all public utilities.
2. Public water & sewer shown for reference only.
3. The water & sewer house connections not included in a "Developer's Agreement" shall conform to Howard County Plumbing Code. The on-site W/C shall be copper and the S/C shall be iron.
4. Storm Water Management provided by F-88-141.

**GENERAL NOTES**

1. The Land included in this plan is zoned R-20.
2. Coordinates shown are based on the Maryland State Plane Coordinate System as projected by Howard County Control Station No. 304.9001 & 3143006.
3. All roadways are public and existing.
4. Total areas included in this plan 2.08 Acres.
5. Any damage to county owned rights of way shall be corrected at the developer's expense.
6. Total number of lots: 24.
7. For flag or pipestem lots, refuse collection snow removal, and maintenance to be provided to the junction of flag or pipestem and the road R/W and not onto the flag or pipestem driveway.
8. Storm Water Management provided by F-88-141.
9. Lot Coverage: 30%.
10. Reference Nos S80-12, F-88-141, P-87-78.
11. Topo taken from plans by Fisher, Collins & Carter, Inc.

**ADDRESS CHART**

LOT #	STREET ADDRESS
102	8355 SPRING BREEZE COURT
103	8307 SPRING BREEZE COURT
104	8311 SPRING BREEZE COURT
105	8315 SPRING BREEZE COURT
106	8316 SPRING BREEZE COURT
107	8312 SPRING BREEZE COURT
108	8308 SPRING BREEZE COURT
109	8304 SPRING BREEZE COURT
110	8300 SPRING BREEZE COURT
111	8367 SPRING BREEZE COURT
147	8364 KINGS HEIGHTS ROAD
148	8360 KINGS HEIGHTS ROAD
149	8356 KINGS HEIGHTS ROAD
150	8352 KINGS HEIGHTS ROAD
151	8348 KINGS HEIGHTS ROAD

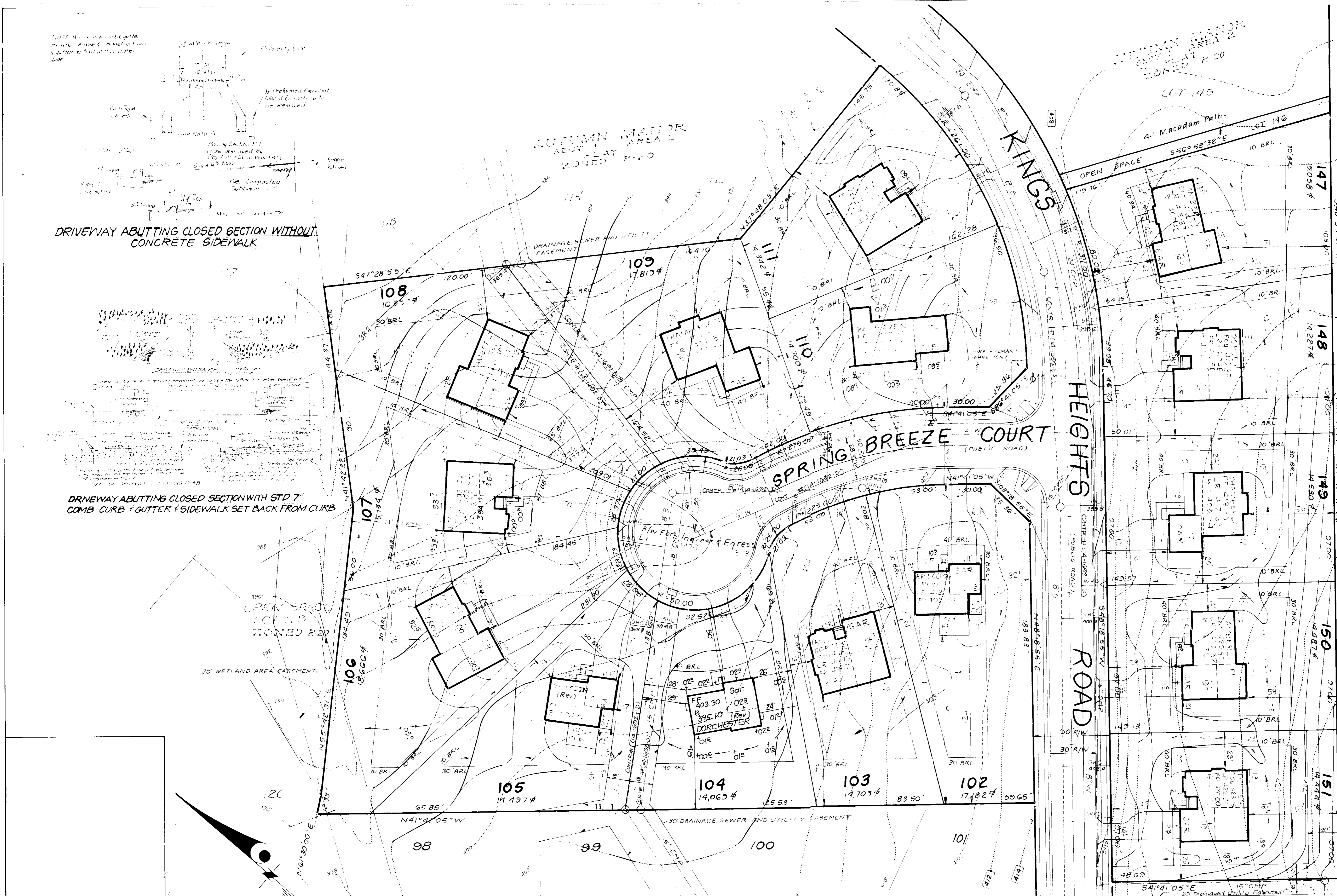
Subdivision Name	Autumn Manor	Sec. Area	1/2	Lot#	154
Plan No.	8394-8398	Block No.	19	Zone	R-20
Water Code	F05	Plan No.	25	Dist. Code	2nd
		Survey Code		Census Tr.	G024
					1400510

**CLARK • FINEPROCK & SACKETT, INC.**  
ENGINEERS • PLANNERS • SURVEYORS

716 MINNISTREL WAY • COLUMBIA, MD 21046 • (410) 381-1500 • BALTIMORE, MD 21201 • (410) 381-1500

DESIGNED	YHL	<b>SITE DEVELOPMENT PLAN</b> LOTS 94-111, 147-151, 154 <b>AUTUMN MANOR</b> SECTION 1 AREA 2 SECOND ELECTION DISTRICT HOWARD COUNTY, MARYLAND	SCALE	1" = 40'
DRAWN	FAR		DRAWING	107-4
CHECKED	JME		JOB NO.	88-170
DATE	12-88		FILE NO.	88-170

For Diversified Housing Corp. (Patuxent Div)  
8015 Dorset, Rte. 418 #8  
Columbia, Maryland 21044



APPROVED FOR PUBLIC WATER AND PUBLIC SEWERAGE SYSTEMS  
HOWARD COUNTY HEALTH DEPARTMENT

*[Signature]* 6-20-89  
COUNTY HEALTH OFFICER DATE

APPROVED HOWARD COUNTY OFFICE OF PLANNING & ZONING

*[Signature]* 7-2-89  
PLANNING DIRECTOR DATE

*[Signature]* 6/29/89  
CHIEF DIVISION OF COMMUNITY PLANNING AND LAND DEVELOPMENT DATE

APPROVED FOR PUBLIC WATER AND PUBLIC SEWERAGE  
STORM DRAINAGE SYSTEMS AND PUBLIC ROADS  
HOWARD COUNTY DEPARTMENT OF PUBLIC WORKS

*[Signature]* 6/15/89  
DIRECTOR DATE

*[Signature]* 6-15-89  
CHIEF BUREAU OF ENGINEERING DATE

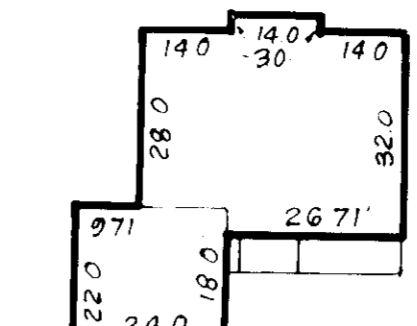
APPROVED DIVISION OF PLANNING 3-1-89

OWNER/DEVELOPER  
Howard County Sanitation Co. Inc.  
% Howard County Land Services, Inc.  
8307 Main Street  
Ellicott City, MD 21043

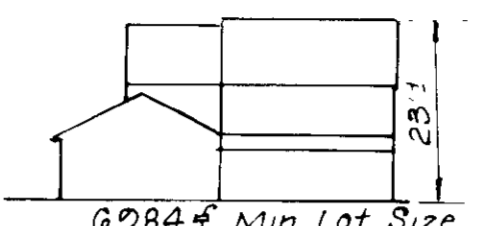
1 Rev. hse. & 9rd lot 104 from Chamberlain to Dorchester 6-3-91  
REVISIONS Date

**TYPICAL HOUSES**

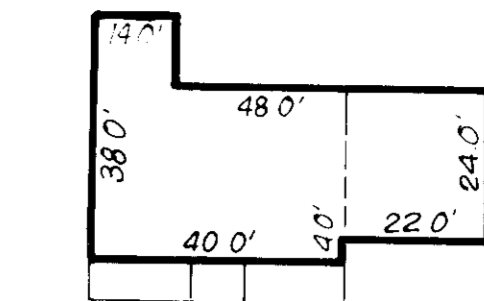
Scale: 1"=30'  
(All house types have a 1' overhang front and rear)



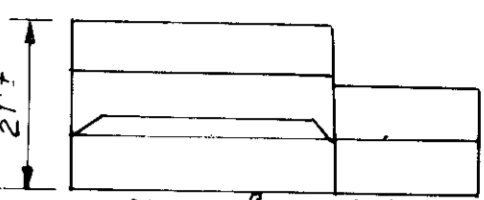
**CHAMBERLAIN**



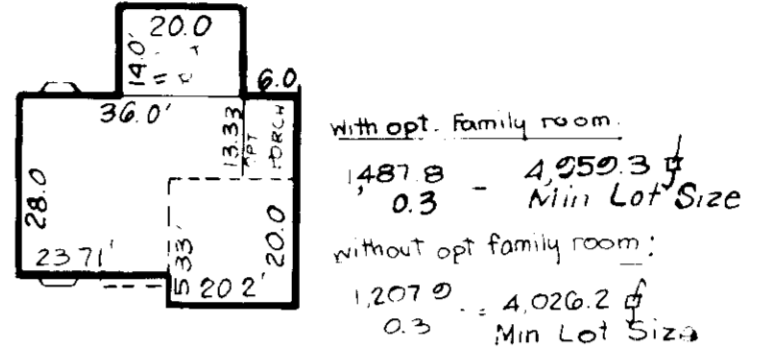
6,984 sq Min Lot Size



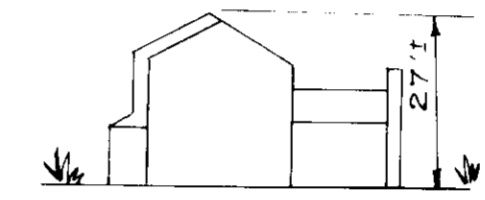
**BELHAVEN**



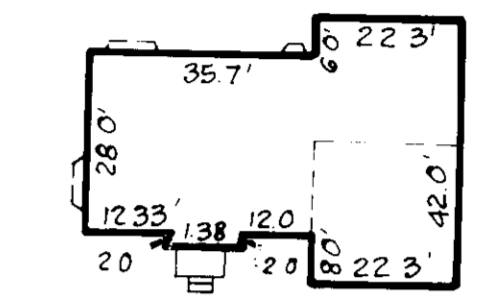
7,253 sq Min Lot Size



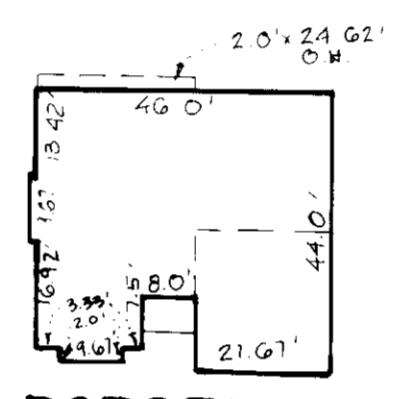
**BRIDGETON**



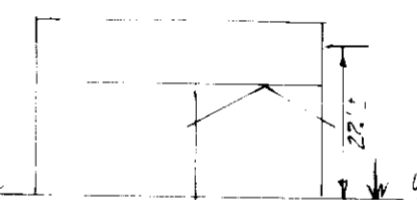
6,525 sq Min Lot Size



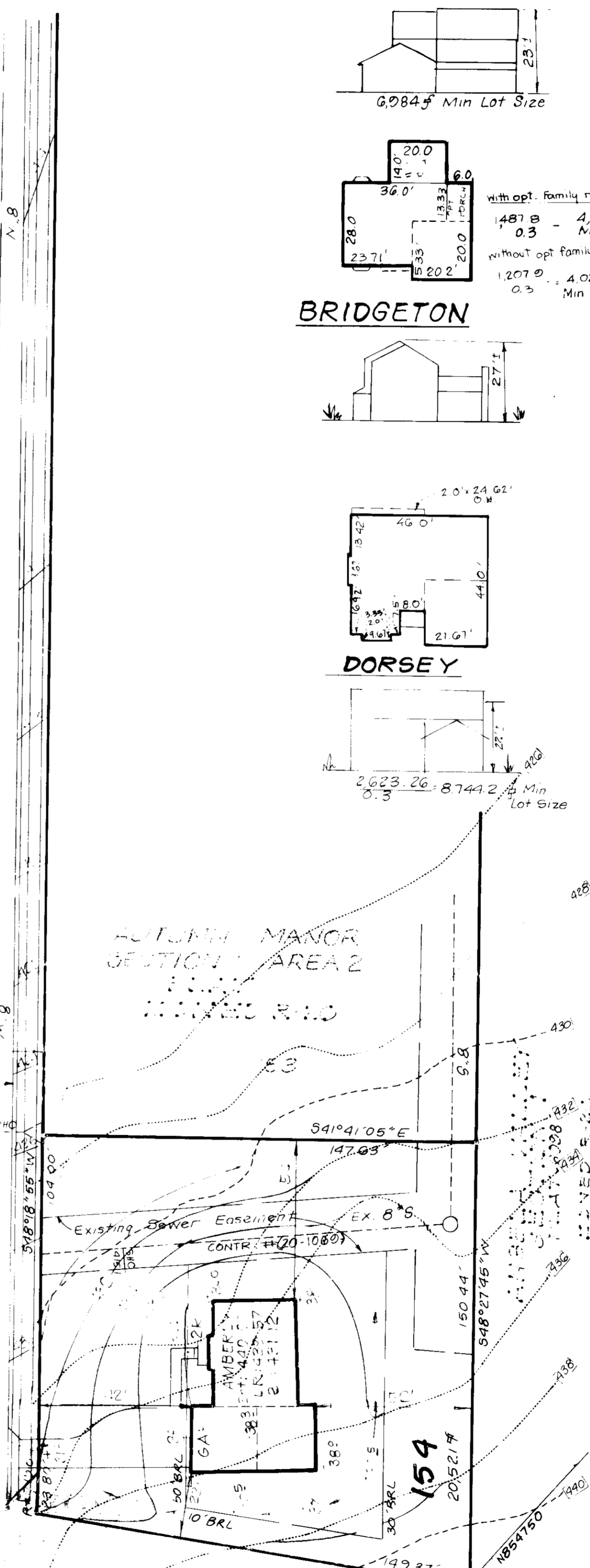
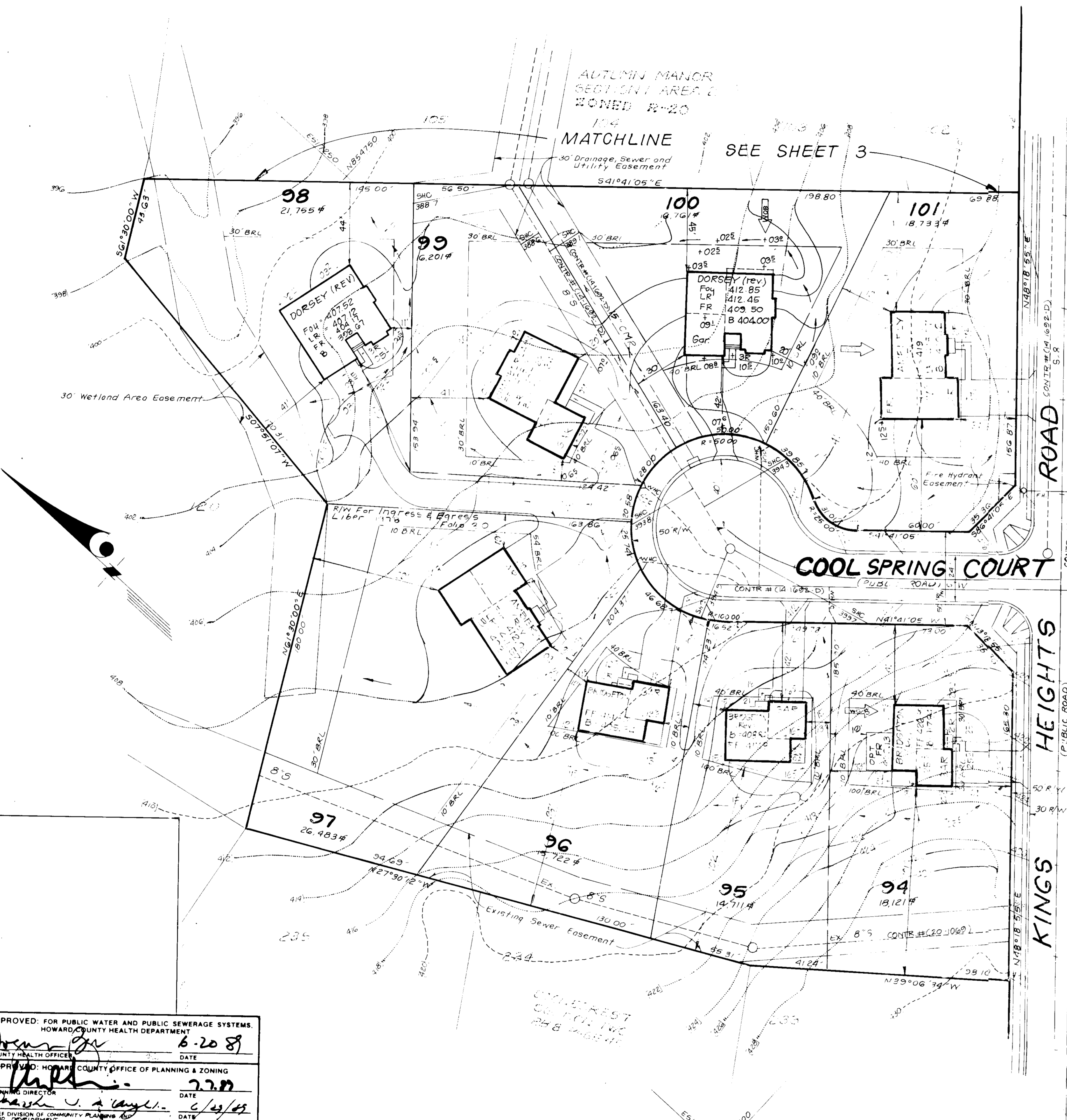
**AMBERLY**



**DORSEY**



8,744 sq Min Lot Size



**APPROVED**  
DIVISION OF  
COMMUNITY PLANNING  
& ZONING  
HOWARD COUNTY  
MARYLAND  
DATE: **3-1-89**

LOT#	STREET ADDRESS
94	834E KINGS HEIGHTS ROAD
95	830S COOL SPRING COURT
96	830D
97	837B
98	837A
99	831O
100	830G COOL SPRING COURT
101	835I KINGS HEIGHTS ROAD
154	833G KINGS HEIGHTS ROAD

OWNER/DEVELOPER:  
HOWARD COUNTY SANITARIUM CO., INC.  
% HOWARD COUNTY LAND SERVICES, INC.  
8307 MAIN STREET  
ELLCOTT CITY, MD 21043

**CLARK • FINEFROCK & SACKETT, INC.**  
ENGINEERS • PLANNERS • SURVEYORS

DESIGNED	VHL	SCALE	1"=30'
DRAWN	RRR	DRAWING	2 of 4
CHECKED	JME	JOB NO.	88-110
DATE	1/88	FILE NO.	88-110X

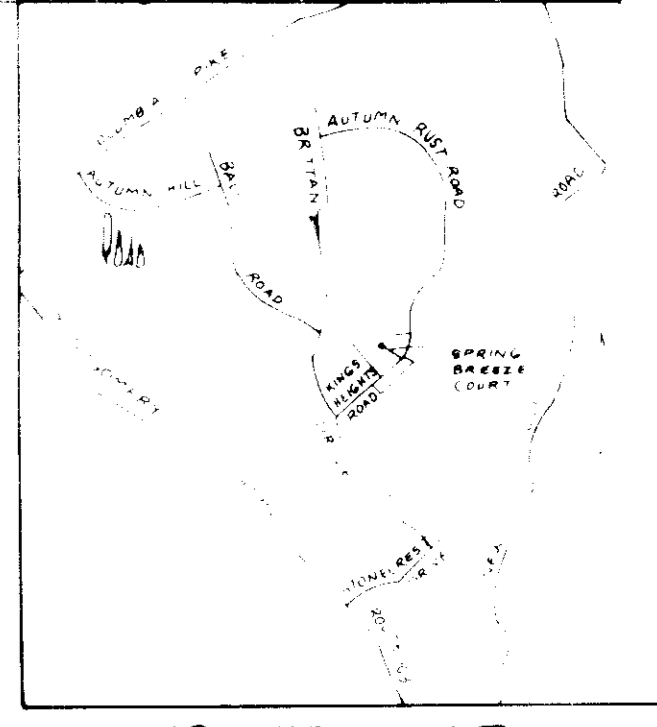
APPROVED: FOR PUBLIC WATER AND PUBLIC SEWERAGE SYSTEMS.  
HOWARD COUNTY HEALTH DEPARTMENT  
DATE: **6-20-89**

APPROVED: HOWARD COUNTY OFFICE OF PLANNING & ZONING  
DATE: **7-20-89**

APPROVED: FOR PUBLIC WATER AND PUBLIC SEWERAGE,  
STORM DRAINAGE SYSTEMS AND PUBLIC ROADS  
HOWARD COUNTY DEPARTMENT OF PUBLIC WORKS  
DATE: **6-23-89**

#	REVISION	Date
2	Rev. hse & 9rd. lot 100 from Bel Haven to Dorsey (Rev.)	5-3-89
1	Rotated house lot 26 to lessen impact on wetlands, as per comment	4-3-89





VICINITY MAP  
Scale 1" = 2000'

LEGEND

- Contour Interval 2 FT
- Existing Contour (dashed line)
- Proposed Contour (solid line)
- Spot Elevation (number)
- Direction of Drainage (arrow)
- Walk out Basement (line with 'W')
- Trees to be Saved (tree symbol)
- Earth Dike (line with 'E.D.')
- Silt Fence (line with 'S')
- Stabilized Constr. Entrance (hatched area)

Reviewed for HOWARD SCD  
*John M. Clark* 6/17/89  
U.S. Soil Conservation District

THIS DEVELOPMENT PLAN IS APPROVED FOR SOIL EROSION AND SEDIMENT CONTROL BY THE HOWARD SOIL CONSERVATION DISTRICT.

Approved \_\_\_\_\_ Date \_\_\_\_\_

*John M. Clark*  
Approved \_\_\_\_\_ Date \_\_\_\_\_

ENGINEER'S CERTIFICATE

I hereby certify that this plan for Erosion and Sediment Control meets the requirements of the Soil Conservation District and that it was prepared in accordance with the requirements of the Howard Soil Conservation District.

*G Nelson Clark* 1-16-89  
Date



CLARK • FINEROCK & SACKETT, INC.  
ENGINEERS • PLANNERS • SURVEYORS

DESIGNED KIW	SEDIMENT AND EROSION CONTROL PLAN LOTS 99-111, 147-151, 154	SCALE
DRAWN GEB	<b>AUTUMN MANOR</b>	DRAWING 3-4
CHECKED KIW	SECTION 1 AREA 2 SECOND ELECTION DISTRICT HOWARD COUNTY MARYLAND	JOB NO. #8
DATE 1-89	For: Universal Housing Corp. (Patent Div.) 805 Dorsey Run, Rd #8 Beltsville, Maryland 21044	FILE NO. #8

OWNER/DEVELOPER  
HOWARD COUNTY SANITARIUM CO, INC.  
96 HOWARD COUNTY LAND SERVICES, INC.  
8307 MAIN STREET  
ELLICOTT CITY, MD 21043

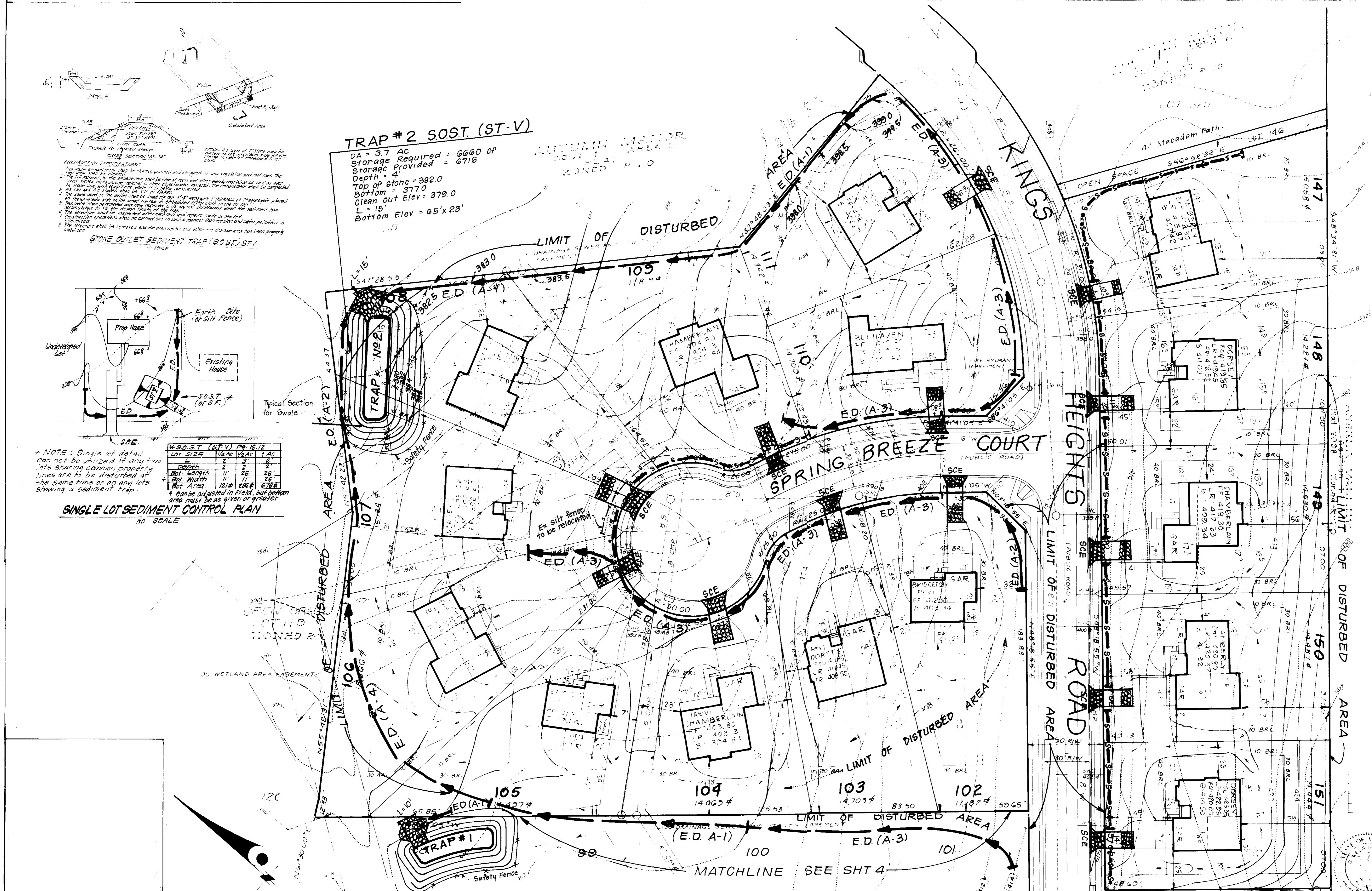
APPROVED  
COMMUNITY PLANNING & LAND DEVELOPMENT  
DATE 5-1-89

DEVELOPERS/BUILDERS CERTIFICATE  
"I/We certify that all development and construction will be done according to this plan of development and plan for erosion and sediment control and that all responsible personnel involved in the construction project will have a Certificate of Attendance at a Dept. of Natural Resources Approved Training Program for the Control of Sediment and Erosion before beginning the project. I also authorize periodic on-site inspection by the Howard Soil Conservation District or their authorized agents, as deemed necessary."  
*D. Bruneau* 1/16/89  
Signature of Developer/Builder Date

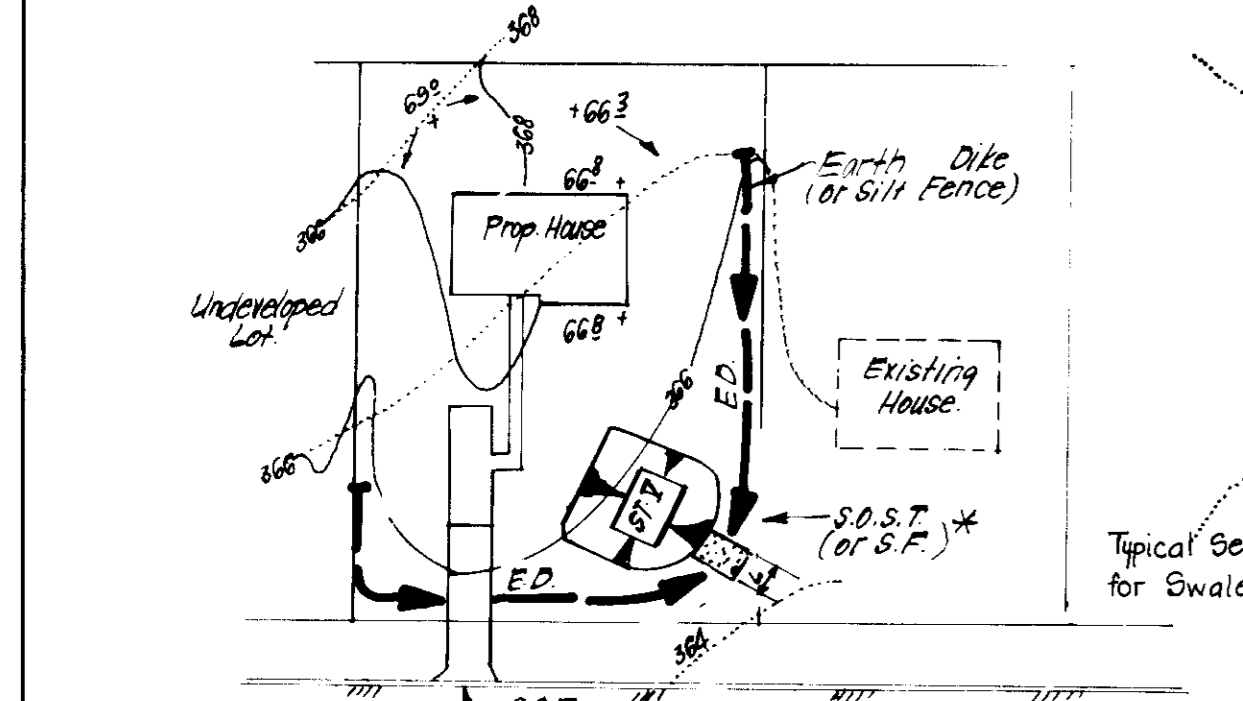
APPROVED FOR PUBLIC WATER AND PUBLIC SEWERAGE SYSTEMS  
HOWARD COUNTY HEALTH DEPARTMENT  
DATE 6-20-89  
COUNTY HEALTH OFFICE

APPROVED FOR PLANNING & ZONING  
DATE 7-7-89  
PLANNING DIRECTOR

APPROVED FOR PUBLIC WATER AND PUBLIC SEWERAGE SYSTEMS  
STORM DRAINAGE SYSTEMS AND PUBLIC ROADS  
HOWARD COUNTY DEPARTMENT OF PUBLIC WORKS  
DATE 6-15-89  
CHIEF BUREAU OF ENGINEERING



TRAP #2 SOST (ST-V)  
DA = 37 AC  
Storage Required = 6660 CP  
Storage Provided = 6716  
Depth = 4'  
Top of stone = 382.0  
Bottom = 377.0  
Clean out Elev = 379.0  
L = 15'  
Bottom Elev. = 0.5' x 23'



NOTE: Single lot detail can not be utilized if any two lots sharing common property lines are to be disturbed at the same time or on any lots showing a sediment trap.

SINGLE LOT SEDIMENT CONTROL PLAN  
NO SCALE