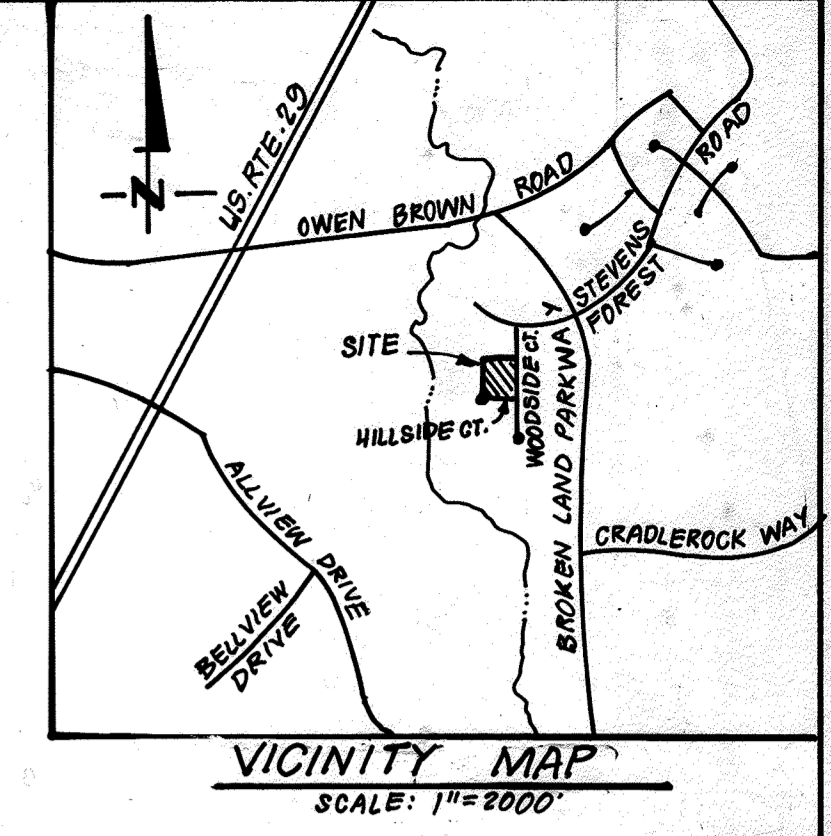
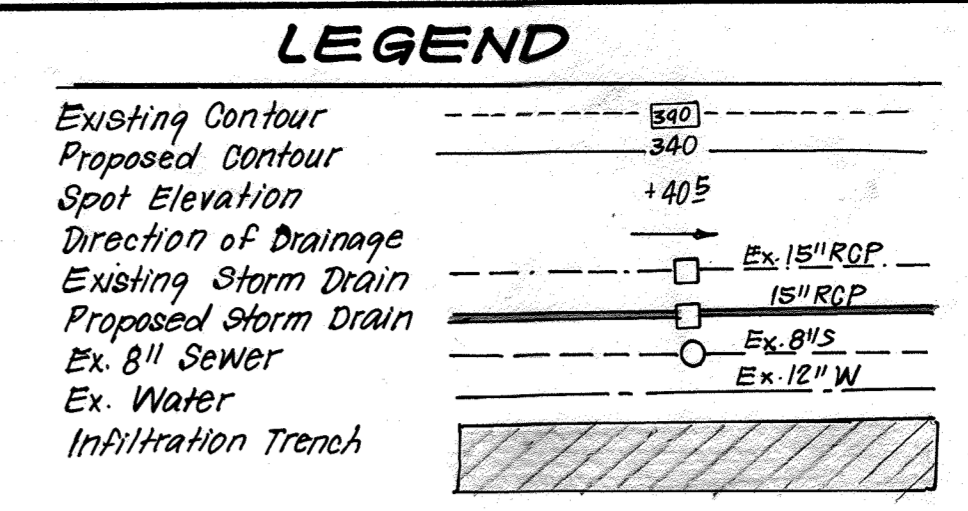


TENANT TABLE

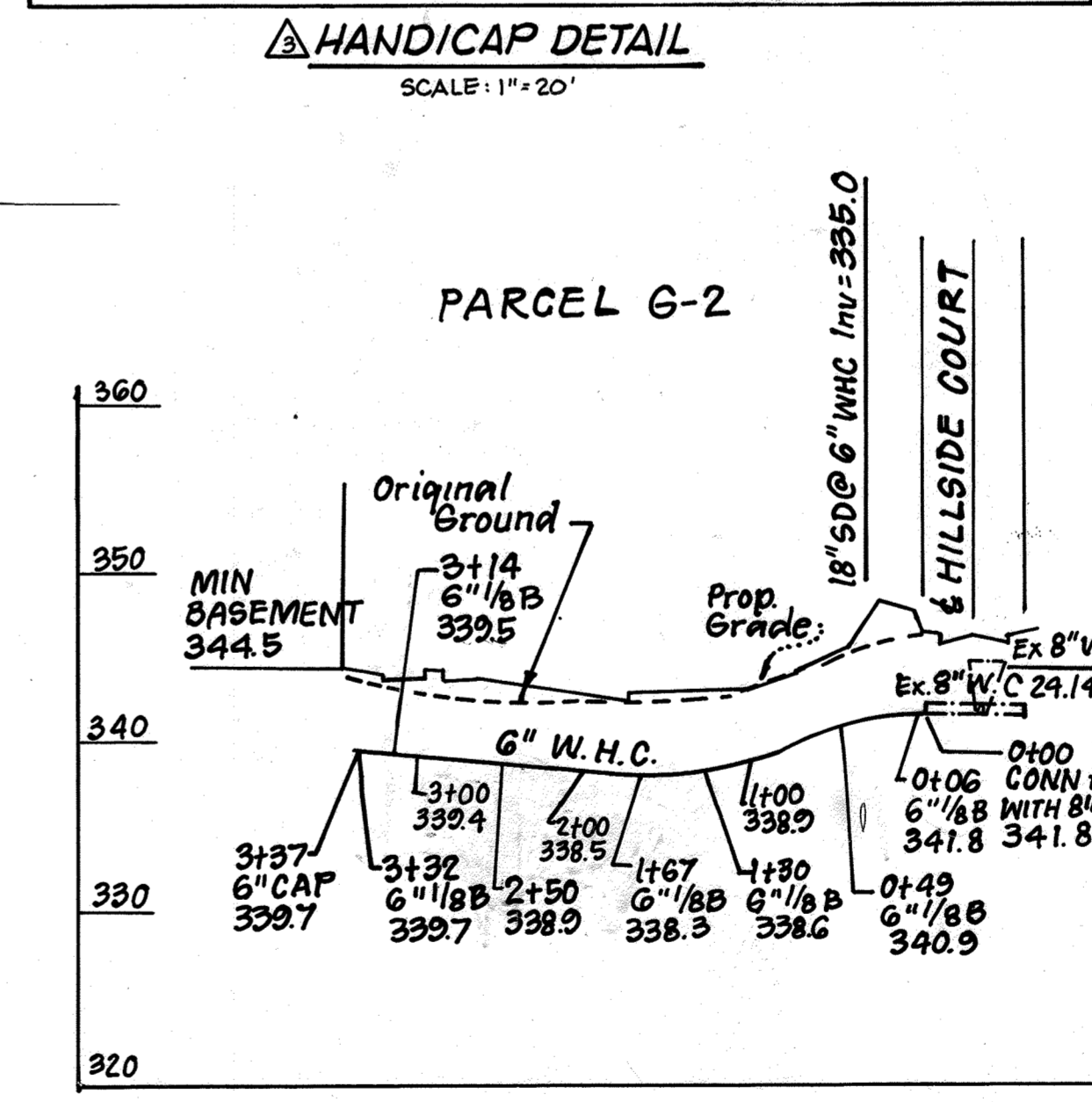
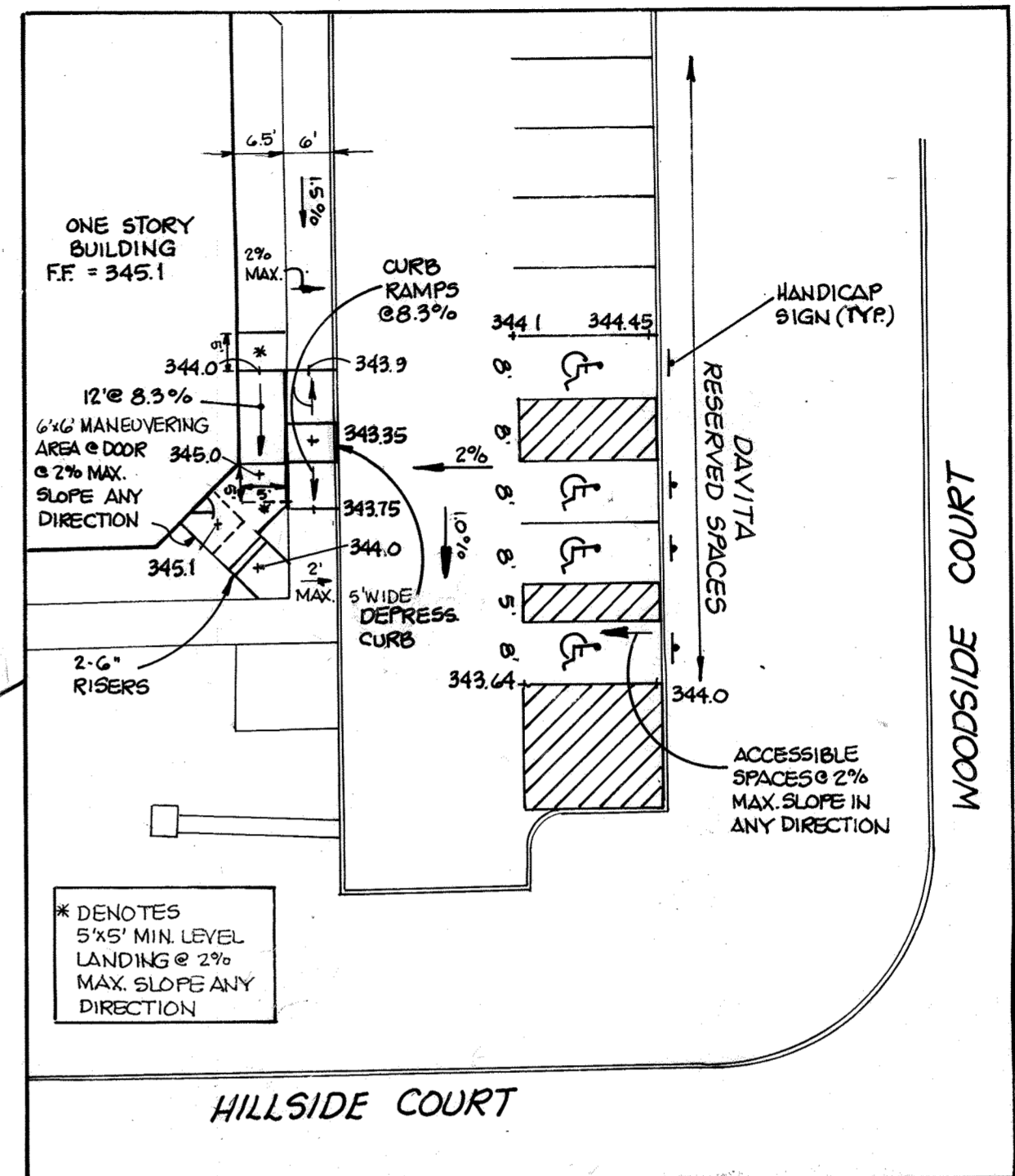
SUITE	FLOOR AREA (GROSS/LEASEABLE)	USE	PARKING REQUIREMENT (PER LEASABLE SF)
SUITE 100	7,790/7,340 SF	OFFICE (OFFICE DEPOT)	2 FS/1,000 SF - FDP 149-A-11
SUITE 110	2,750/2,240 SF	OFFICE (CASH)	2 FS/1,000 SF - FDP 149-A-11
SUITE 112	1,791/1,606 SF	OFFICE (EP/SEWING)	2 FS/1,000 SF - FDP 149-A-11
SUITE 115	4,599/4,050 SF	OFFICE (TT)	2 FS/1,000 SF - FDP 149-A-11
SUITE 120	1,850/1,560 SF	OFFICE (PROMETRICS)	2 FS/1,000 SF - FDP 149-A-11
SUITE 102	7,500/6,707 SF	MEDICAL OFFICE (DANTA)	2 FS/1,000 SF - FDP 149-A-11
TOTAL	26,434 S.F. / 23,525 S.F.		



SITE ANALYSIS

- Zoning: New Town - Employment Center/Commercial (FDP 149A-I)
- Type of Unit Proposed: General Office Building - One Story Medical
- Area Tabulation:
 - Total Area of Parcel: 2.499 Acres
 - Net Leaseable Area: 23,525 SF or 0.5400 Acres
 - Parking & Drives: 1,033 Acres or 41%
- Parking Spaces Provided: 120
- Building Coverage Proposed: 26,170 SF or 0.601 Ac or 24%
- Greenspace Provided: 37,679 SF or 0.865 Ac or 34.6%
- Handicap Spaces: Req'd: 5 ; Proposed: 9

- GENERAL NOTES**
- All materials and construction to be in accordance with Howard County Road Construction Code & Specifications.
 - Coordinates are based on Ho. Co. Geodetic Control Traverse which is based on the Maryland State Plane Coordinate system.
 - All driveways are privately owned and maintained.
 - Any damage to county owned rights of way to be corrected at the developer's expense.
 - Installation of traffic control devices shall be in accordance with the latest edition of the "Manual of Uniform Traffic Control."
 - Topography was compiled from actual field survey.
 - The area shown is located on Tax Map #36.
 - Trench bedding for storm drainage shall be in accordance with Howard County Std. SD G.2.01. See det. sht. 2.
 - Information concerning underground utilities was obtained from available records, but the contractor must determine the exact location by digging test pits, by hand, at all crossings well in advance of construction.
 - The contractor or developer shall contact the Construction Inspection Survey Division 24 hrs. in advance of work at 992-2417 or 792-7272.
 - The developer agrees to work with the Dept. of Licenses and Inspection to resolve any problem with roof water discharge.
 - Handicap parking details shall be in accordance with the "Maryland Building Code for the Handicapped," Sect. 5.01-7.05 and det. sht. 2.
 - Deed Reference: L.1535 F.139.
 - Notify all Utility Companies 24 hrs. in advance of construction.
 - All construction methods and materials for the on-site private W/S system shall follow the current edition of the Howard County Plumbing Code, supplemented by the Howard County Std. Details and specs. where necessary.
 - All water pipes shall be D.I.P. Class 52.
 - Areas where water house connection is to be built shall be at final grade and conn. shall be laid with a min. 3.5' of cover.
 - Water and Sewer House connections shall be built to within 5' Ft. of Building.
 - See QP.2. Files F-8702, F-89-110.
 - Disturbed Area - 550 S.F. Additional Impervious Area - 550 SF. The LOD of 550 S.F. is exempt from SWM as it is under 5,000 S.F. Any future changes, where the cumulative LOD exceeds 5,000 S.F. will require SWM.
- AS-BUILT FOR STORM DRAINAGE AND INFILTRATION TRENCHES 12-3-91**

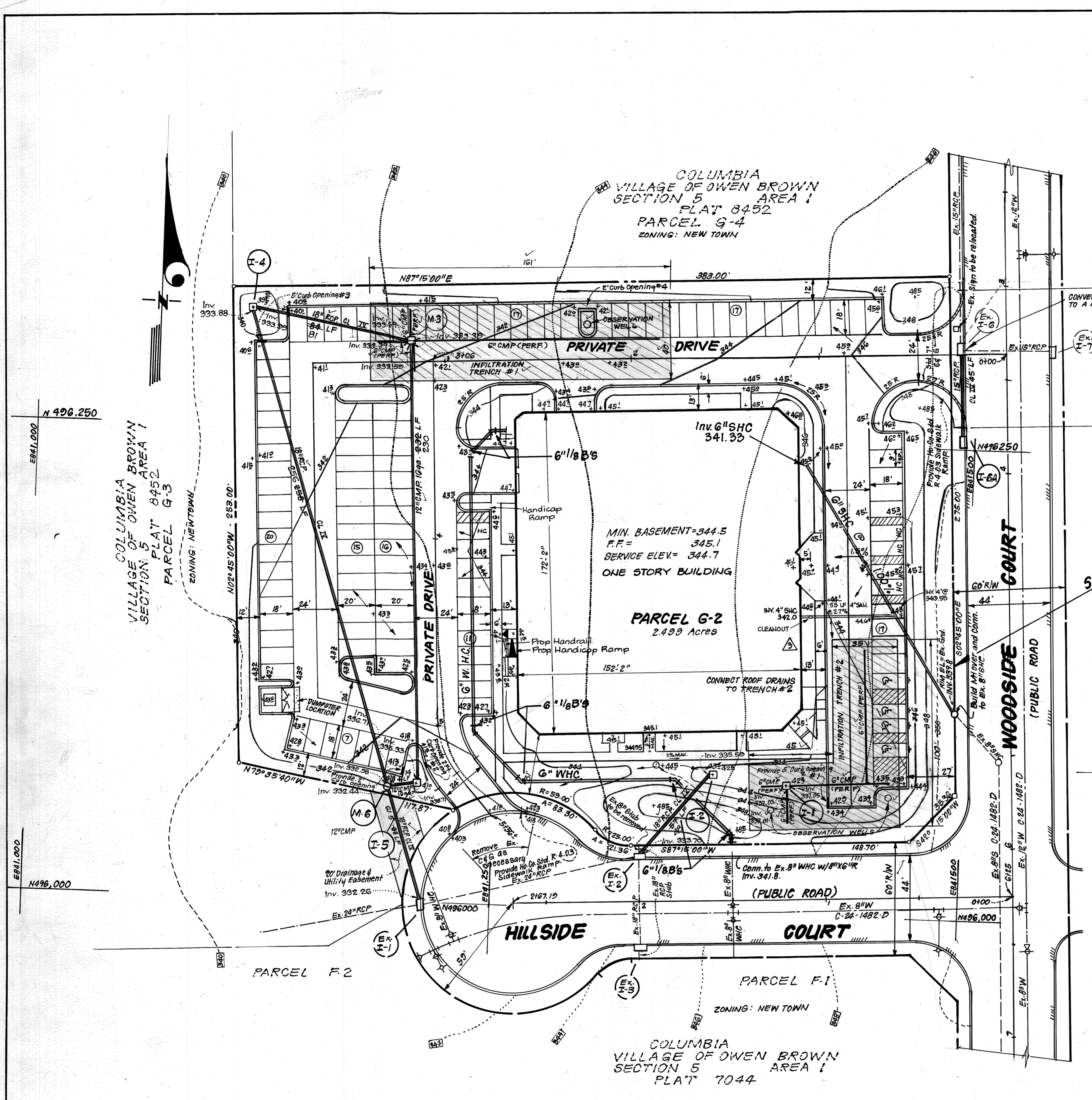


PARCEL NO.	STREET ADDRESS
G-2	6904 Woodside Court

SUBDIVISION NAME	SECTION/AREA	PARCEL
COLUMBIA VILLAGE OF OWEN BROWN	5 1	G-2

PLAT NO.	BLOCK NO.	ZONE	TAX ZONING MAP	ELEC. DIST.	CENSUS TR.
8452		N.T.	36	G th	6061.03

WATER CODE	SEWER CODE
E-13	541-0000



APPROVED: FOR PUBLIC WATER AND PUBLIC SEWERAGE SYSTEMS, HOWARD COUNTY HEALTH DEPARTMENT

James M. Boyd 5-22-89
COUNTY HEALTH OFFICER DATE

APPROVED: HOWARD COUNTY OFFICE OF PLANNING & ZONING

Mark S. Z. Smith 5/24/89
PLANNING DIRECTOR DATE

APPROVED: FOR PUBLIC WATER AND PUBLIC SEWERAGE, STORM DRAINAGE SYSTEMS AND PUBLIC ROADS, HOWARD COUNTY DEPARTMENT OF PUBLIC WORKS

James J. Smith 5/16/89
DIRECTOR DATE

Robert J. Smith 5-16-89
CHIEF BUREAU OF ENGINEERING DATE

APPROVED: PLANNING BOARD OF HOWARD COUNTY

DATE 4-26-89

BUILDING ELEVATION
SCALE: AS SHOWN

Nicholas J. Brader III
MEDLINE DESIGN PROFESSIONAL
10/21/20
FOR REV. #3 ONLY
N.J.S. ENGINEERING, INC.

Nicholas J. Brader III
PROFESSIONAL ENGINEER
MD. LICENSE # 12558

NOTE: All "As-Built" Infiltration Trench dimensions are based on information provided by Howard County Dept. of Public Works, Bureau of Construction Inspection.

NO.	REVISION	DATE
3	ADD HANDICAP RAMP; PARKING, ADD MEDICAL USE, ADD PROP. USE TENANT TABLE	10-2-20
2	Handicap Ramp & H.C. Parking Addition.	3-14-20
1	Rev. loc. 6" SHC, 6" WHC, coordinate values	8-9-89
NO.	REVISION	DATE

OWNER: The Howard Research and Development Corp.
10275 Little Patuxent Parkway
Columbia, Md. 21043

CLARK • FINEFROCK & SACKETT, INC.
ENGINEERS • PLANNERS • SURVEYORS
7135 MINSTREL WAY • COLUMBIA, MD. 21045 • (301) 381-7200 - BALTO. • (301) 621-8100 - WASH.

SITE DEVELOPMENT PLAN
PARCEL G-2

COLUMBIA VILLAGE OF OWEN BROWN SECTION 5 6TH ELECTION DISTRICT, HOWARD COUNTY, MD.

FOR: C.D.C. COLUMBIA ASSOCIATION LTD. PARTNERSHIP
8280 Greensboro Drive, Suite 790
McLean Va. 22102

DATE 1-13-89

DESIGNED MP JLS

DRAWN KIW

CHECKED MP JLS

DATE 1-13-89

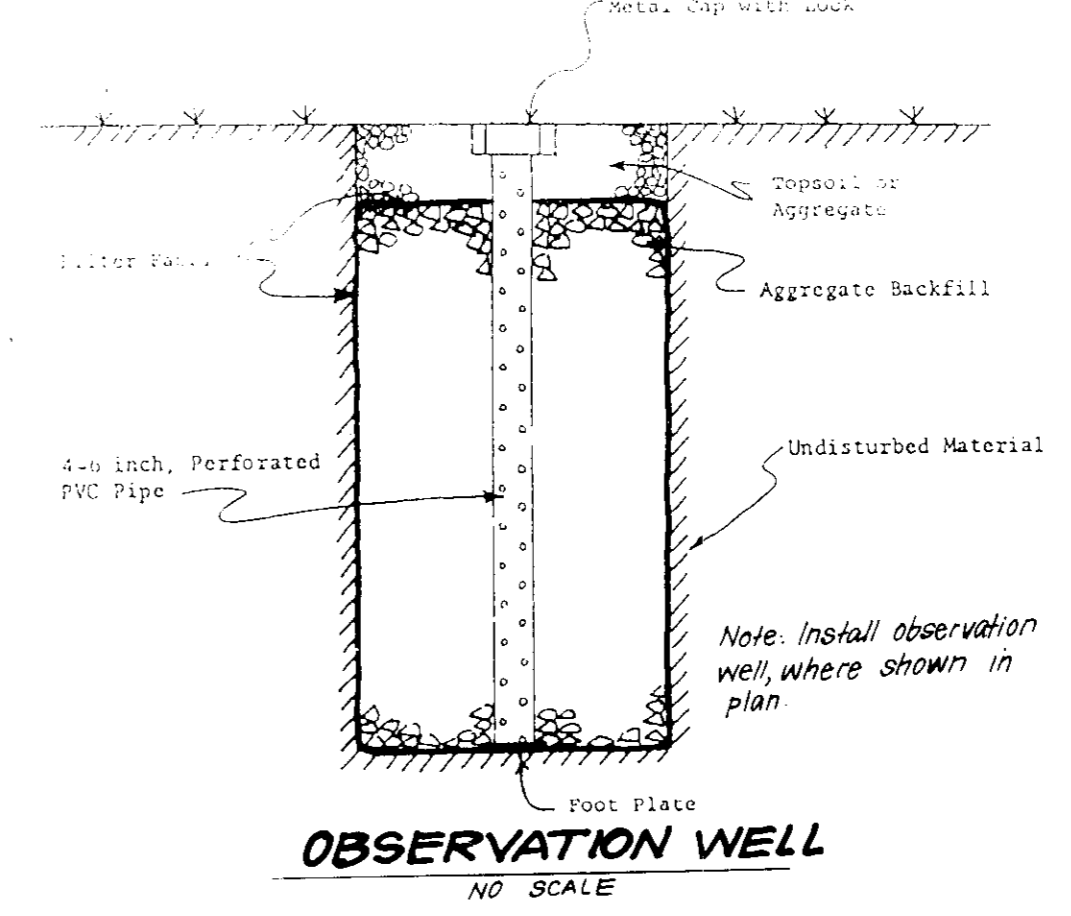
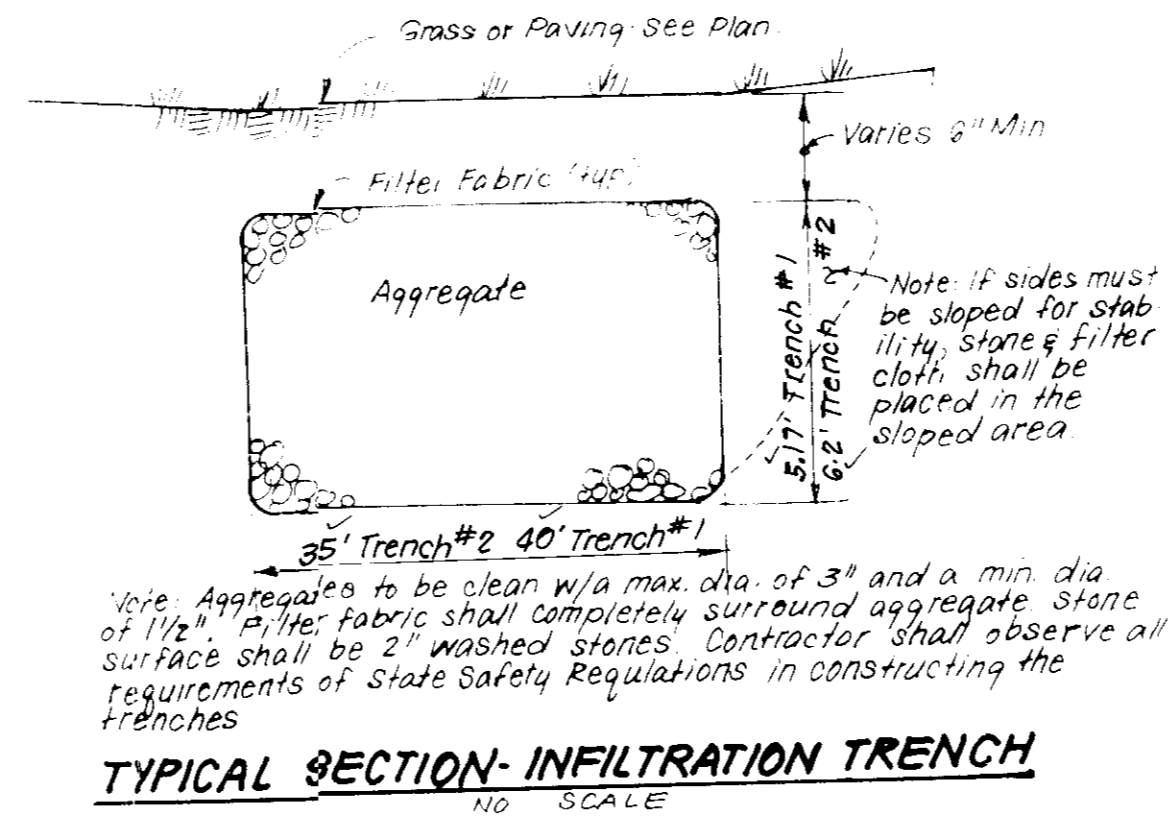
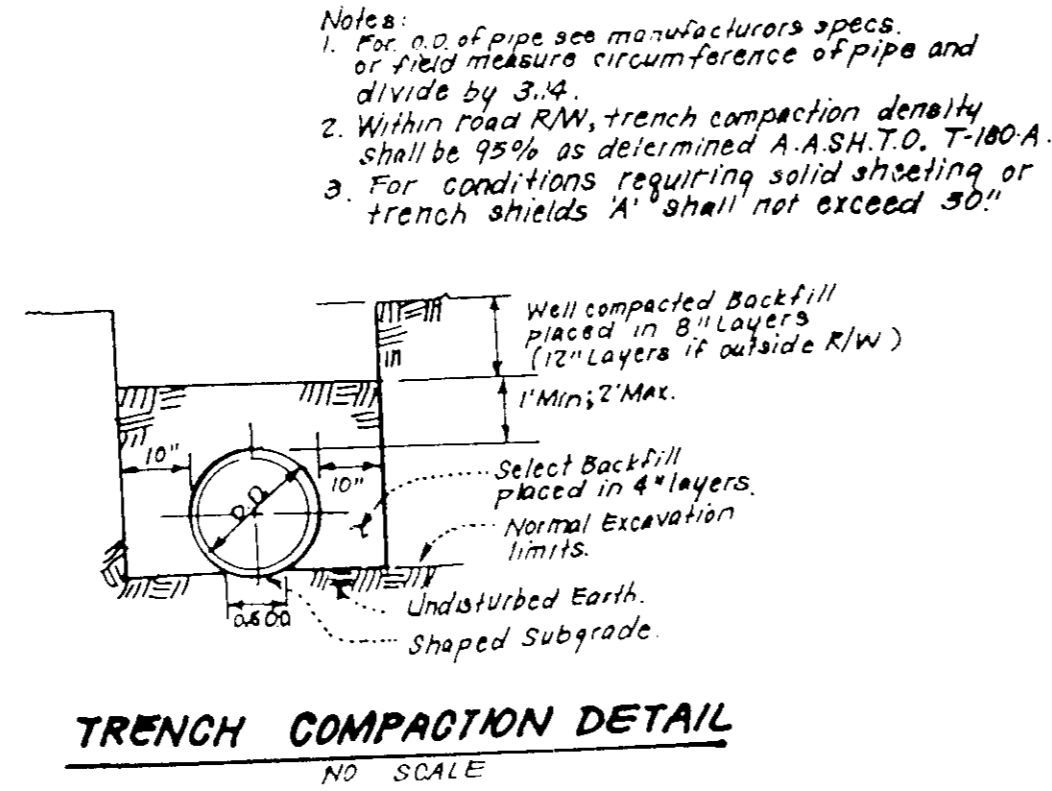
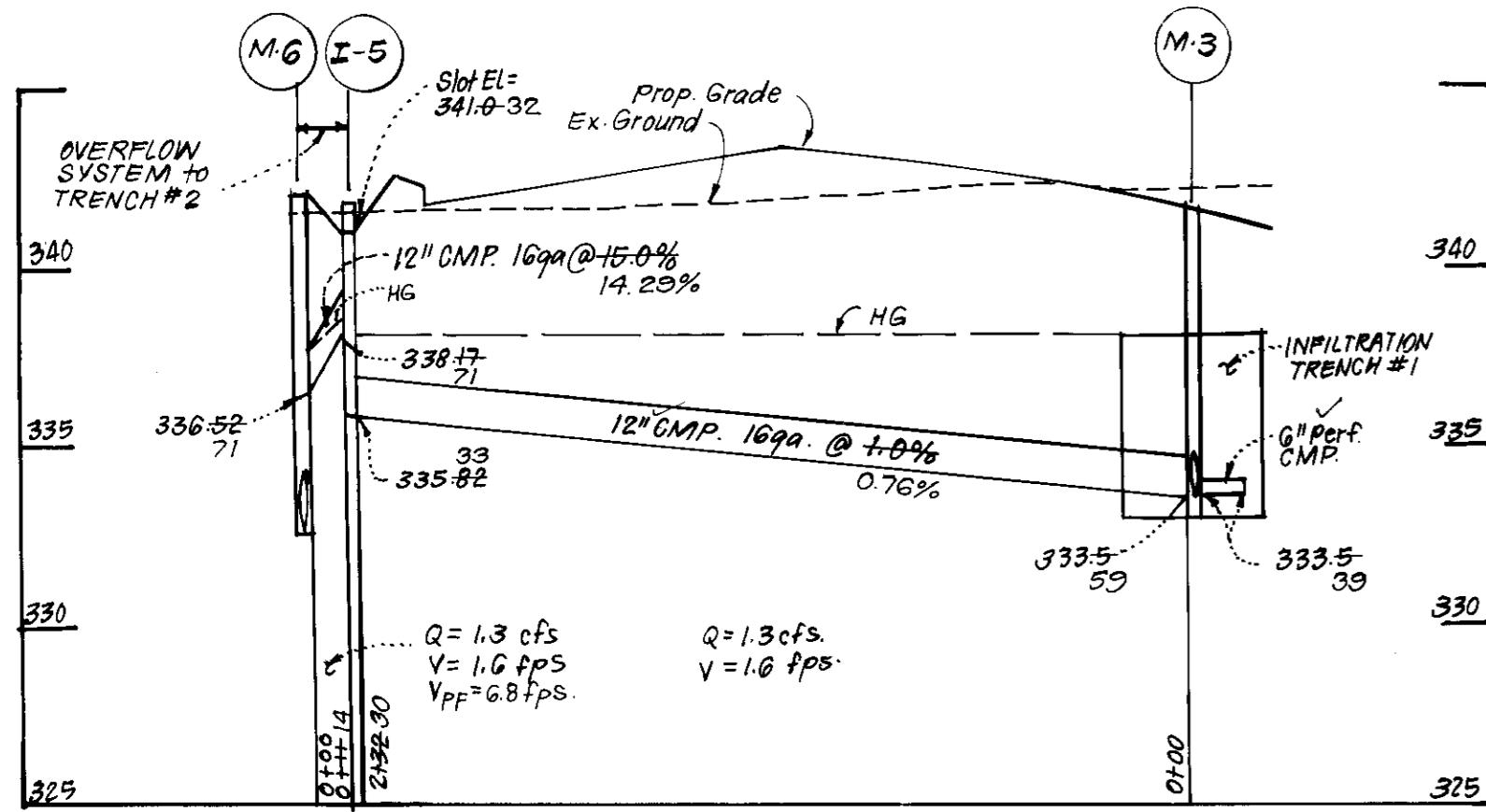
SCALE 1"=30'

DRAWING 10FG

JOB NO. 88-154

FILE NO. 88-154-X

AS-BUILT 6DP-89-158



3.3.6.1. Infiltration trenches shall not be constructed or placed in service until all of the contributing drainage area has been identified and approved by the responsible supervisor.

3.3.6.2. Trench Preparation.
Excavate the trench to the design dimensions. Excavation exterior shall be finished away from the trench sides to enhance trench wall stability. Loose tree stumps must be removed from within the trench sides and the trench walls. Fabric positioning & shelling during subsequent installation shall be done on the side walls of the trench shall be roughened where indicated on the plan and equipment.

3.3.6.3. Filter Fabric.
The filter fabric shall be installed in accordance with the manufacturer's instructions. The filter fabric shall be placed in the trench to a maximum depth of 12" above the aggregate. The fabric shall be placed in the trench to a maximum depth of 12" above the aggregate. The fabric shall be placed in the trench to a maximum depth of 12" above the aggregate. The fabric shall be placed in the trench to a maximum depth of 12" above the aggregate.

3.3.6.4. Stone Aggregate Placement and Compaction.
The stone aggregate shall be placed in lifts and compacted using hand tampers. As a rule of thumb, a maximum loose lift thickness of 2" shall be recommended. The compaction process ensures fabric conformity to the excavation sides, thereby reducing the potential for soil piping, fabric clogging, and settlement problems.

3.3.6.5. Overlapping and Covering.
Following the stone aggregate placement, the filter fabric shall be folded over the stone aggregate to form a 6" minimum longitudinal lap. The folded fill soil or stone aggregate shall be placed over the lap at sufficient intervals to maintain the lap during subsequent backfilling.

3.3.6.6. Contamination.
Care shall be exercised to prevent natural or fill soils from intermixing with the stone aggregate. All contaminated stone aggregate shall be removed and replaced with uncontaminated stone aggregate.

3.3.6.7. Voids Behind Fabric.
Voids can be created between the fabric and excavation sides and shall be avoided. Removing boulders or other obstacles from the trench walls in one course of such voids. Natural soils should be placed in these voids at the most convenient time during construction to ensure fabric conformity to the excavation sides. Soil piping, fabric clogging, and possible surface subsidence will be avoided by this remedial process.

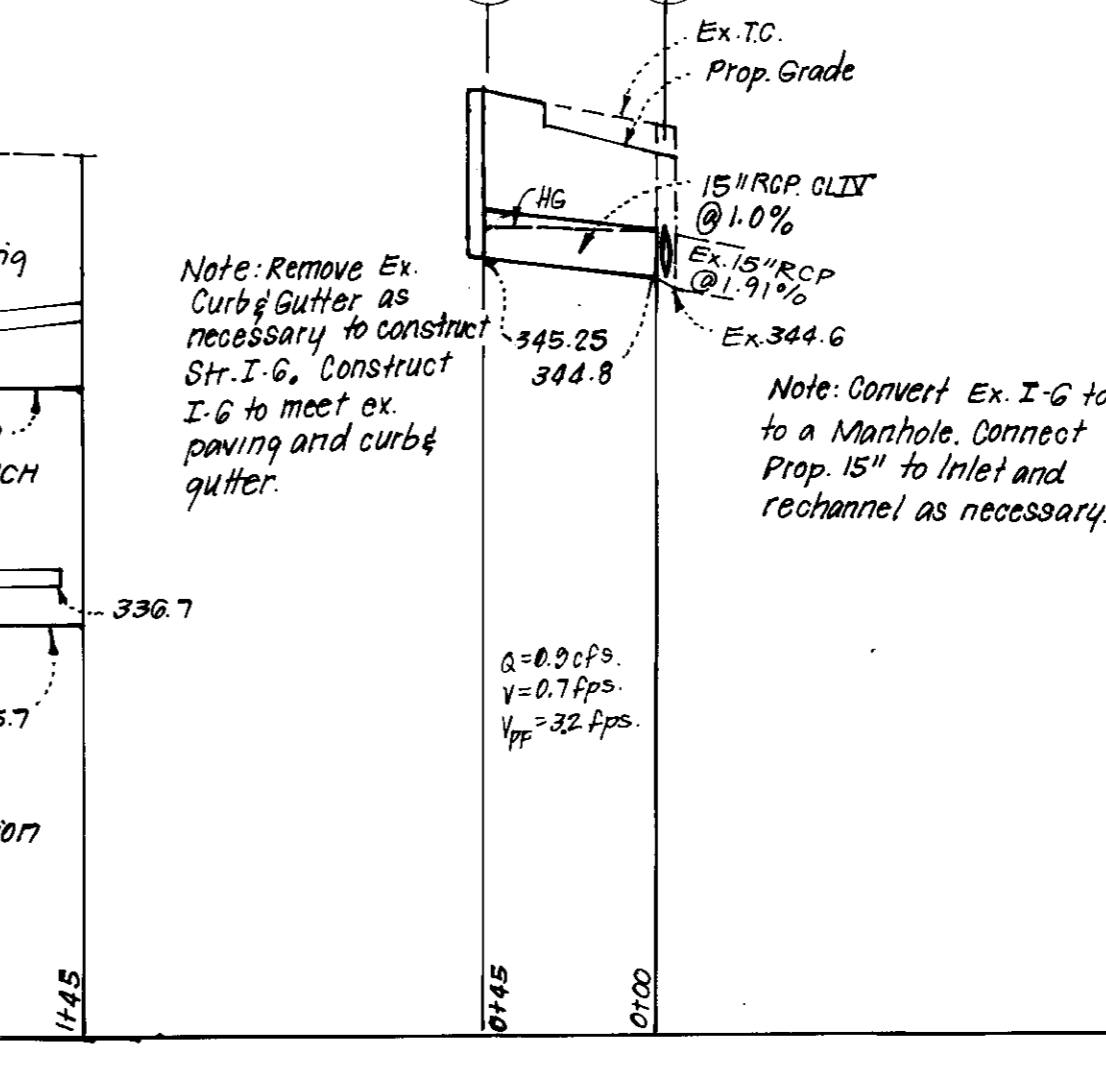
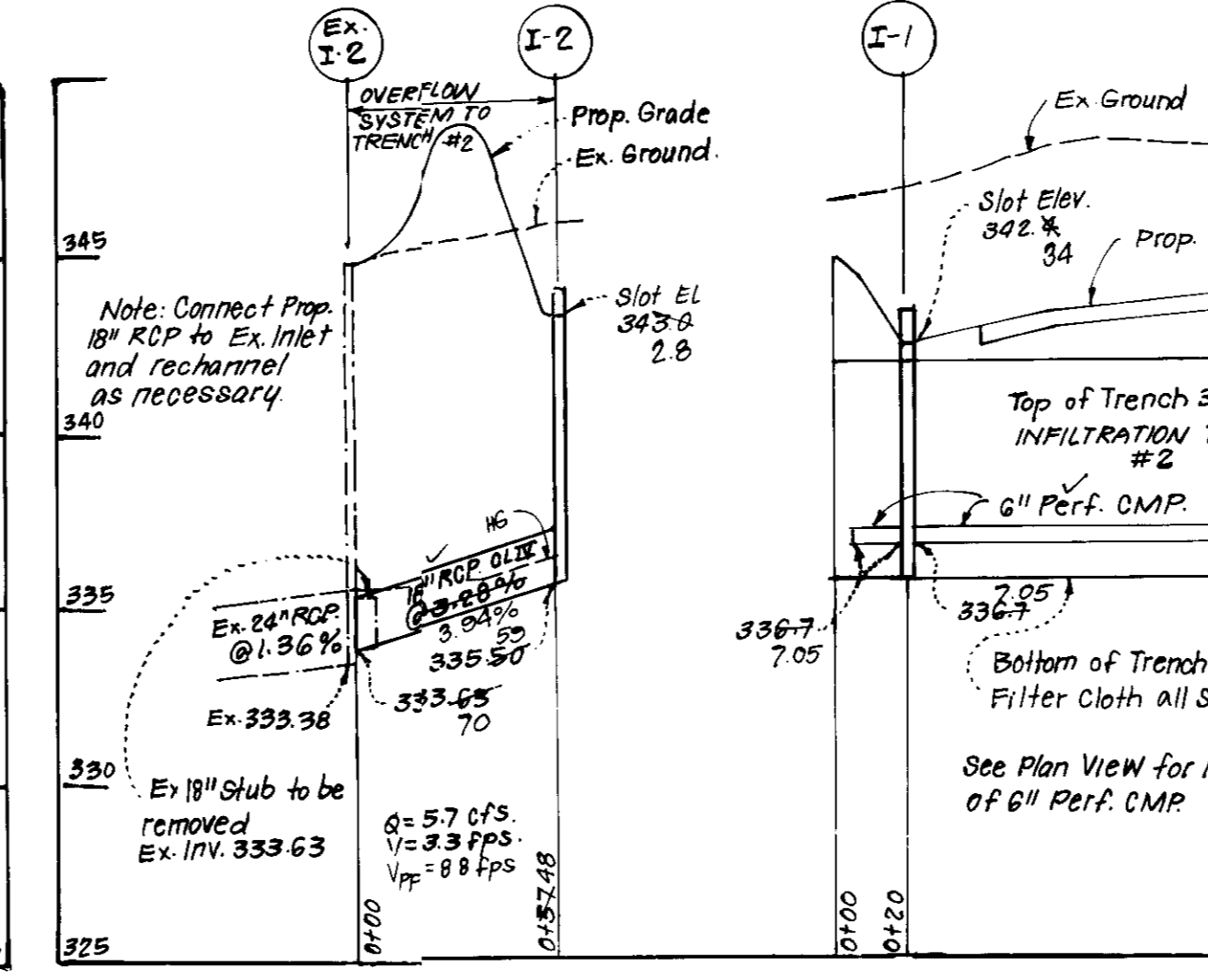
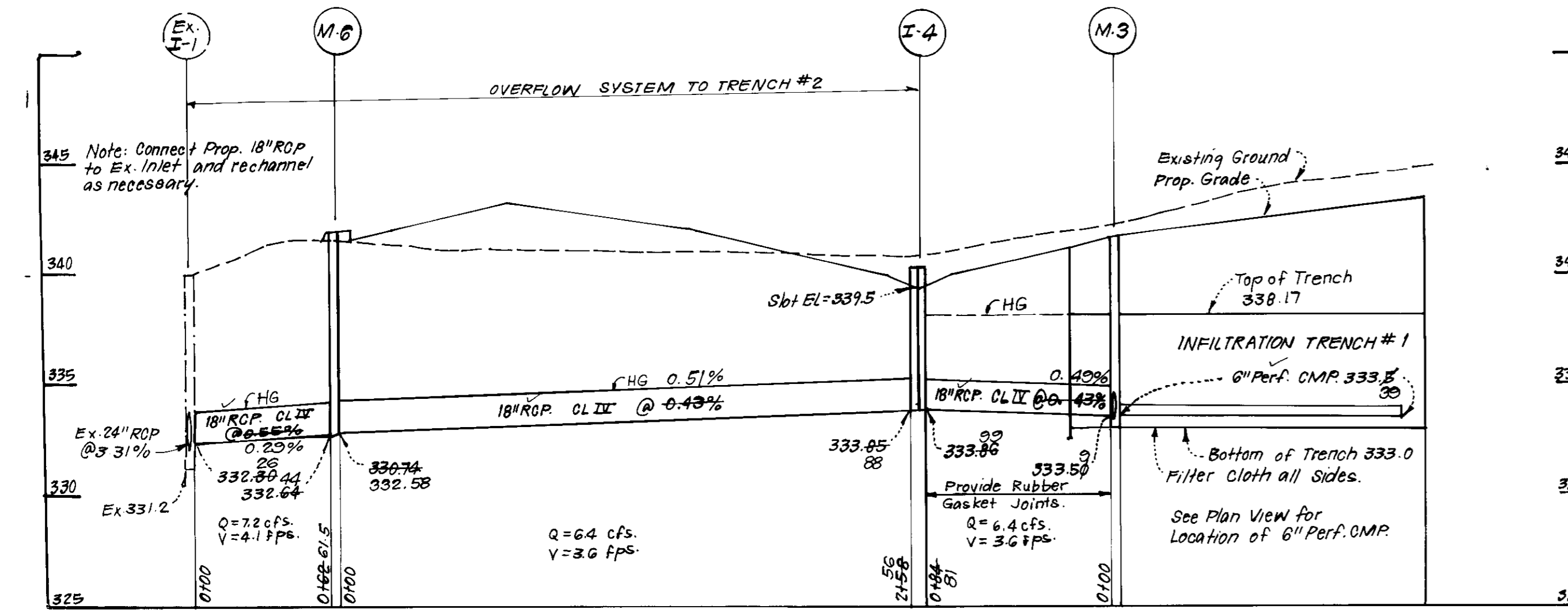
3.3.6.8. Unstable Excavation Sides.
Vertically excavated walls may be difficult to maintain in areas where the soil moisture is high or where soft cohesive or unconsolidated soils predominate. These conditions may require laying back of the side slopes to maintain stability, trapezoidal rather than rectangular cross sections as a result.

3.3.6.9. Vegetative Buffer.
A vegetative buffer of at least 20 feet (wider, if possible) shall be used to intercept surface runoff from all impervious areas.

3.3.6.10. Traffic Control.
Heavy equipment and traffic shall be restricted from traveling over the infiltration areas to minimize compaction of the soil.

3.3.6.11. Observation Well.
An observation well, as described in subsection 3.3.6.3 and Figure 1, shall be provided. The depth of the well at the time of installation shall be clearly marked on the well cap.

3.3.7. Maintenance.
Infiltration trenches shall be designed to minimize maintenance. However, it is recognized that all infiltration facilities are subject to clogging by sediments, soil, grease, silt and other debris. In addition, the performance and longevity of these structures is not well documented. Consequently, a monitoring observation well is required for all infiltration structures.
The observation well shall be monitored periodically. For the first year after completion of construction, the well should be monitored on a quarterly basis and after every large storm. It is recommended that a log book be maintained indicating the date at which the facility was inspected, the characteristics of the structure have been verified. The monitoring schedule can be reduced to an annual basis, unless the performance data indicates that a more frequent schedule is required.
Sediment build-up in the top foot of stone aggregate on the observation well inlet should be monitored on the same schedule as the observation well. A monitoring well in the top foot of stone aggregate will be required when the trench has a stone surface. Sediment deposited shall not be allowed to build up to the point where it will reduce the rate of infiltration into the trench.



3.3.6.12. Maintenance.
Infiltration trenches shall be designed to minimize maintenance. However, it is recognized that all infiltration facilities are subject to clogging by sediments, soil, grease, silt and other debris. In addition, the performance and longevity of these structures is not well documented. Consequently, a monitoring observation well is required for all infiltration structures.
The observation well shall be monitored periodically. For the first year after completion of construction, the well should be monitored on a quarterly basis and after every large storm. It is recommended that a log book be maintained indicating the date at which the facility was inspected, the characteristics of the structure have been verified. The monitoring schedule can be reduced to an annual basis, unless the performance data indicates that a more frequent schedule is required.
Sediment build-up in the top foot of stone aggregate on the observation well inlet should be monitored on the same schedule as the observation well. A monitoring well in the top foot of stone aggregate will be required when the trench has a stone surface. Sediment deposited shall not be allowed to build up to the point where it will reduce the rate of infiltration into the trench.

STRUCTURE SCHEDULE

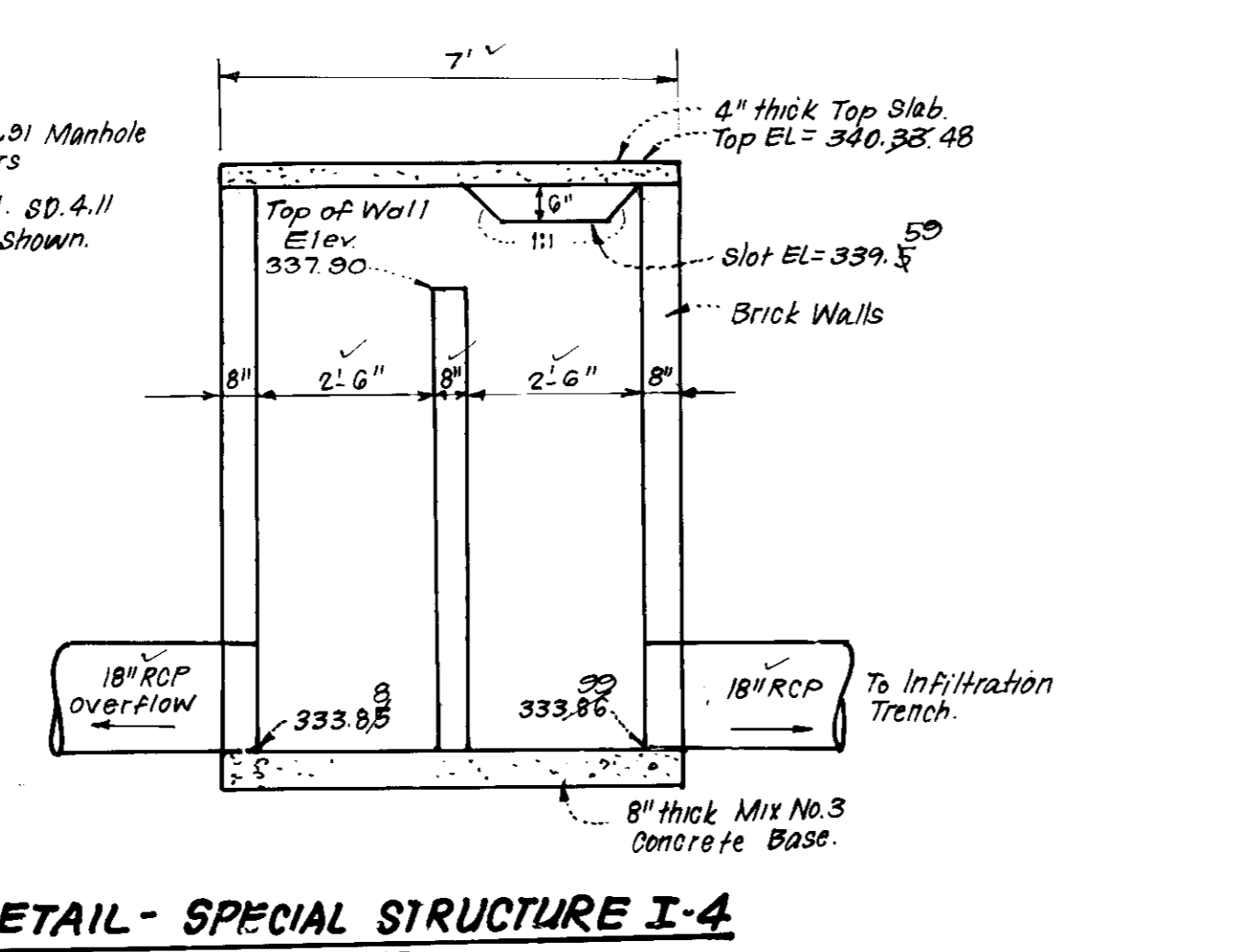
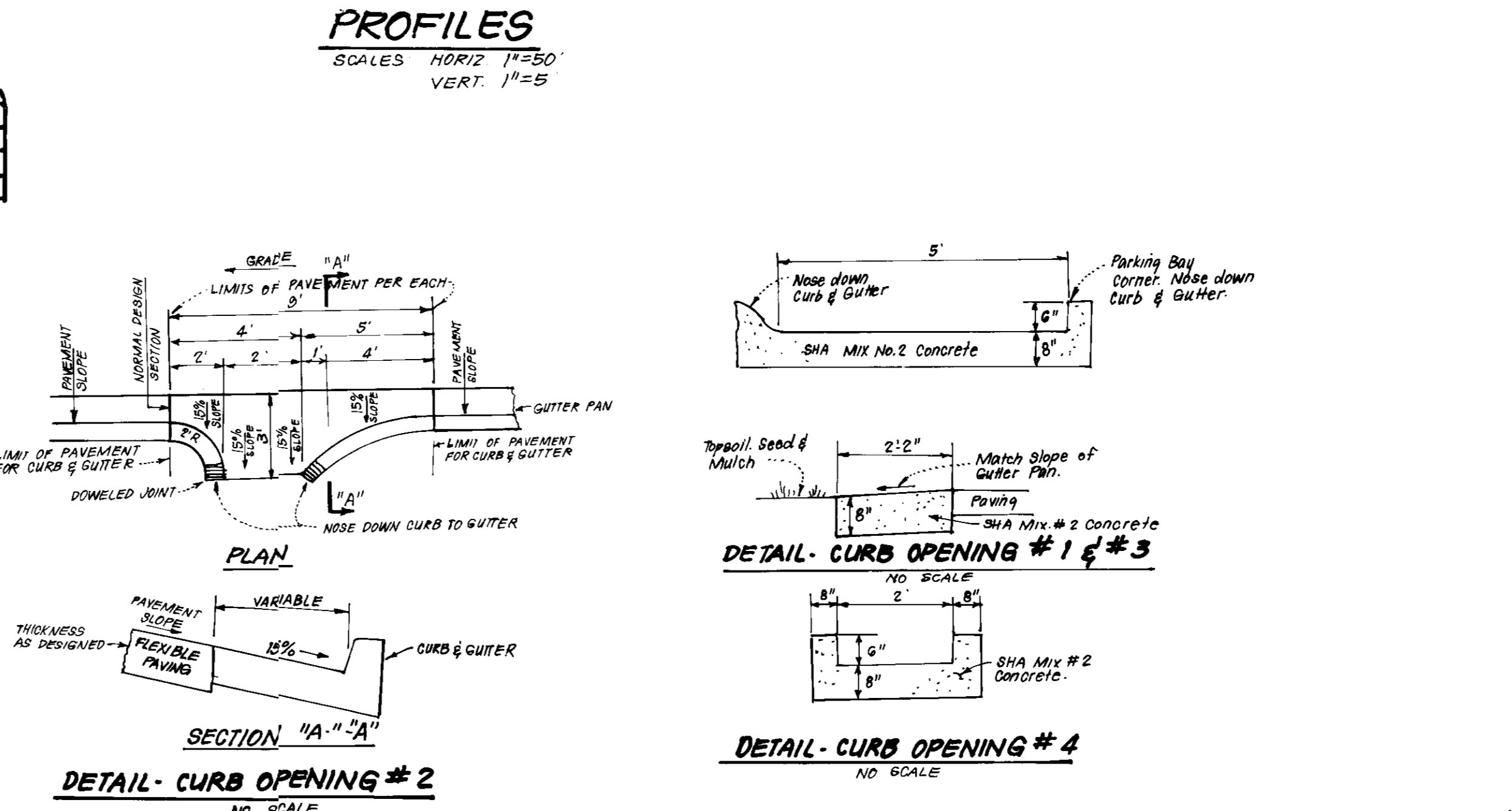
No.	TYPE	INV. IN	INV. OUT	TOP ELEVATION		REMARKS	LOCATION
				UPPER	LOWER		
I-1	D Inlet			343.25	343.25	No. Co. Std. SD. 4.11	2'-6" Sq. See Plan
I-2	D Inlet			343.85	343.85	No. Co. Std. SD. 4.11	2'-6" Sq. " "
M-3	Std. Precast Manhole	333.53	333.53	341.62	341.62	No. Co. Std. G 5.12	4' Rd. " "
I-4	Mod. D Inlet			340.33	340.33	See detail this sht	" "
I-5	D Inlet			341.83	341.83	No. Co. Std. SD. 4.11	2'-6" Sq. " "
I-GA	A-5 Inlet			345.25	340.71	No. Co. Std. SD. 4.01	W=2'-6" " "
M-G	Std. Precast Manhole	332.64	332.64	342.00	342.00	No. Co. Std. G 5.12	4' Rd. " "

Notes:
O Provide Slot in N.S. & E. Side.
Provide Slots in All Sides.
Δ Provide Slots in N.E. & W. Side.
□ Inlet top to meet ex. curb & gutter.
+ Invert to be fully developed.

PIPE SCHEDULE

SIZE	TYPE	LENGTH
12"	CMP 12ga	243 LF
15"	RCP CL III	41 LF
18"	RCP CL IV	461 LF

* 2 1/2" x 1/2" corrugations.



4-26-89

APPROVED: FOR PUBLIC WATER AND PUBLIC SEWERAGE SYSTEMS, HOWARD COUNTY HEALTH DEPARTMENT
DATE: 5-22-89

APPROVED: HOWARD COUNTY OFFICE OF PLANNING & ZONING
DATE: 5/24/89

APPROVED: FOR PUBLIC WATER AND PUBLIC SEWERAGE, STORM DRAINAGE SYSTEMS AND PUBLIC ROADS, HOWARD COUNTY DEPARTMENT OF PUBLIC WORKS
DATE: 5-16-89

NOTE: "AS-BUILT" Infiltration Trench dimensions are based on information provided by Howard County Dept. of Public Works, Bureau of Construction Inspection Division.

Jeffrey J. Schmitt
12/4/91
For AS-BUILT of Infiltration Trenches and storm drainage

AS-BUILT FOR STORM DRAINAGE AND INFILTRATION TRENCHES 12-8-91

CLARK • FINEFROCK & SACKETT, INC.
ENGINEERS • PLANNERS • SURVEYORS
7135 MINNISTREL WAY • COLUMBIA, MD 21045 • (301) 981-7500 • BALTO • (410) 631-1313

**SITE DEVELOPMENT PLAN
PARCEL G-2
STORM DRAINAGE DETAILS
COLUMBIA**

VILLAGE OF OWEN BROWN
SECTION 5 AREA 1
GTH ELECTION DISTRICT, HOWARD COUNTY, MD.

OWNER: The Howard Research and Development Corp
10875 L.H.6 Parkway
Columbia, Md. 21043

DATE: 1-13-89

DESIGNED: MP
DRAWN: MP
KIW
CHECKED: MP

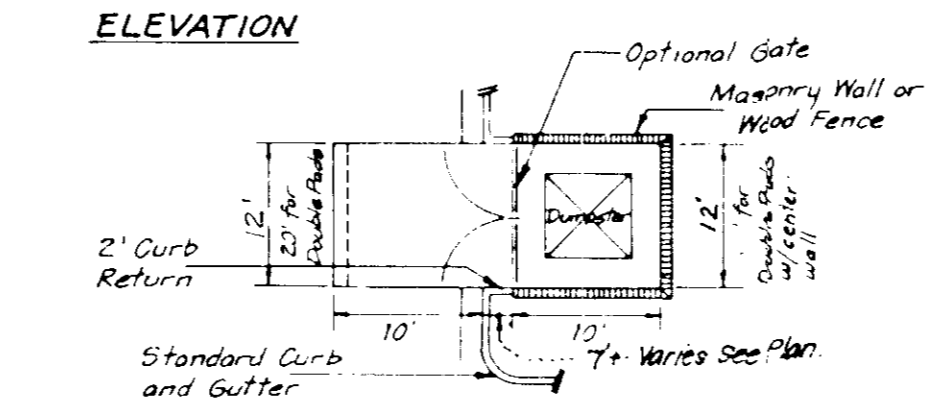
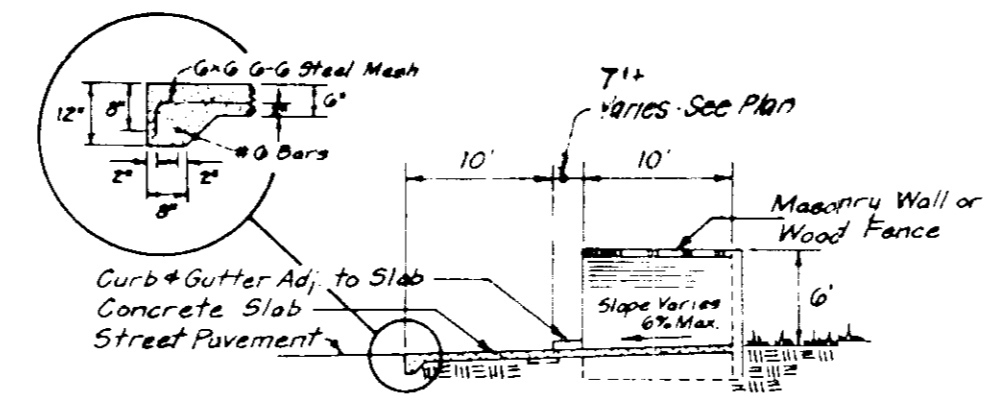
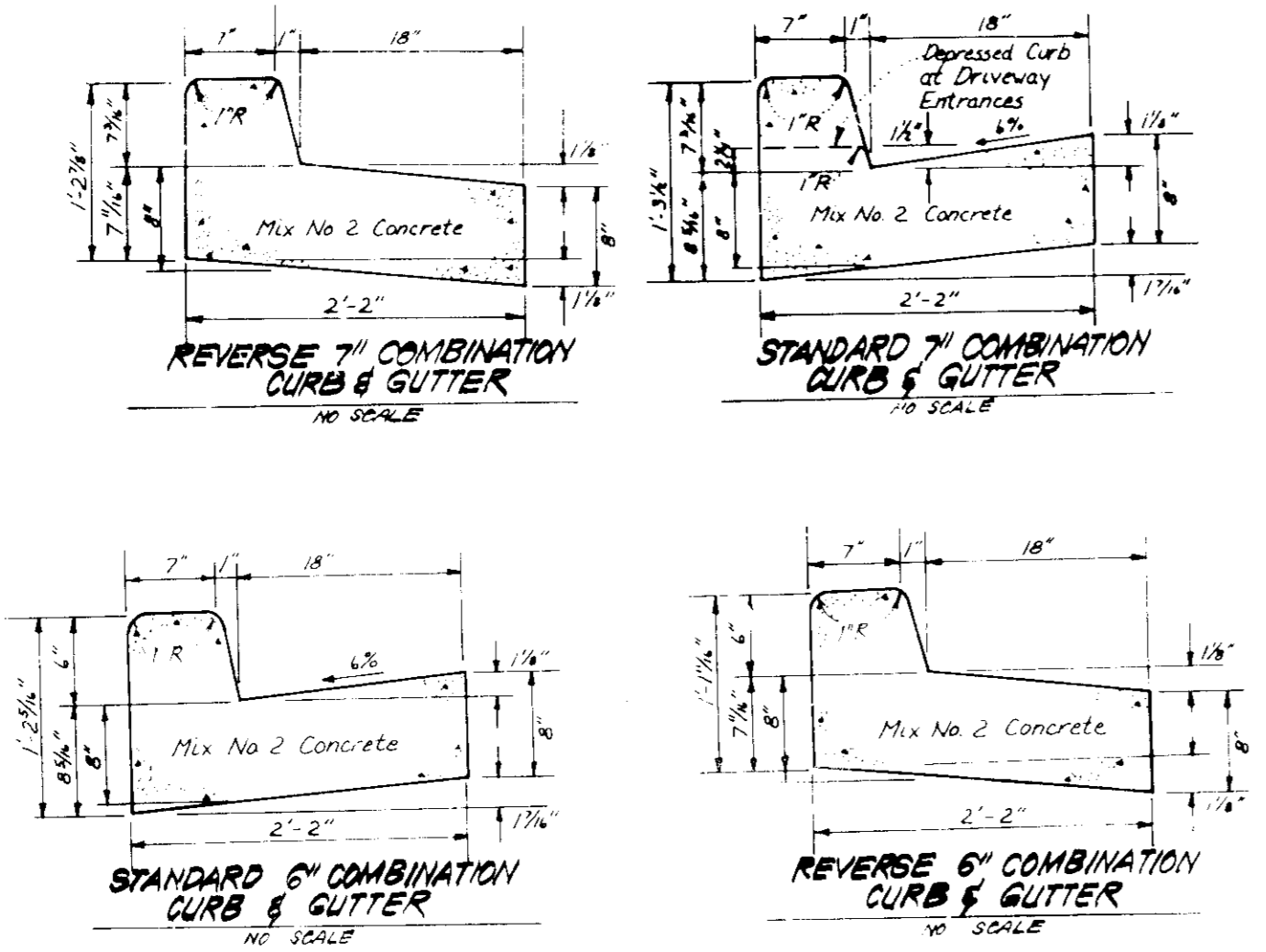
DATE: 1-13-89

SCALE: 1"=30'
SHEET: 20F6
JOB NO: 88-154
FILE NO: 88-154 X

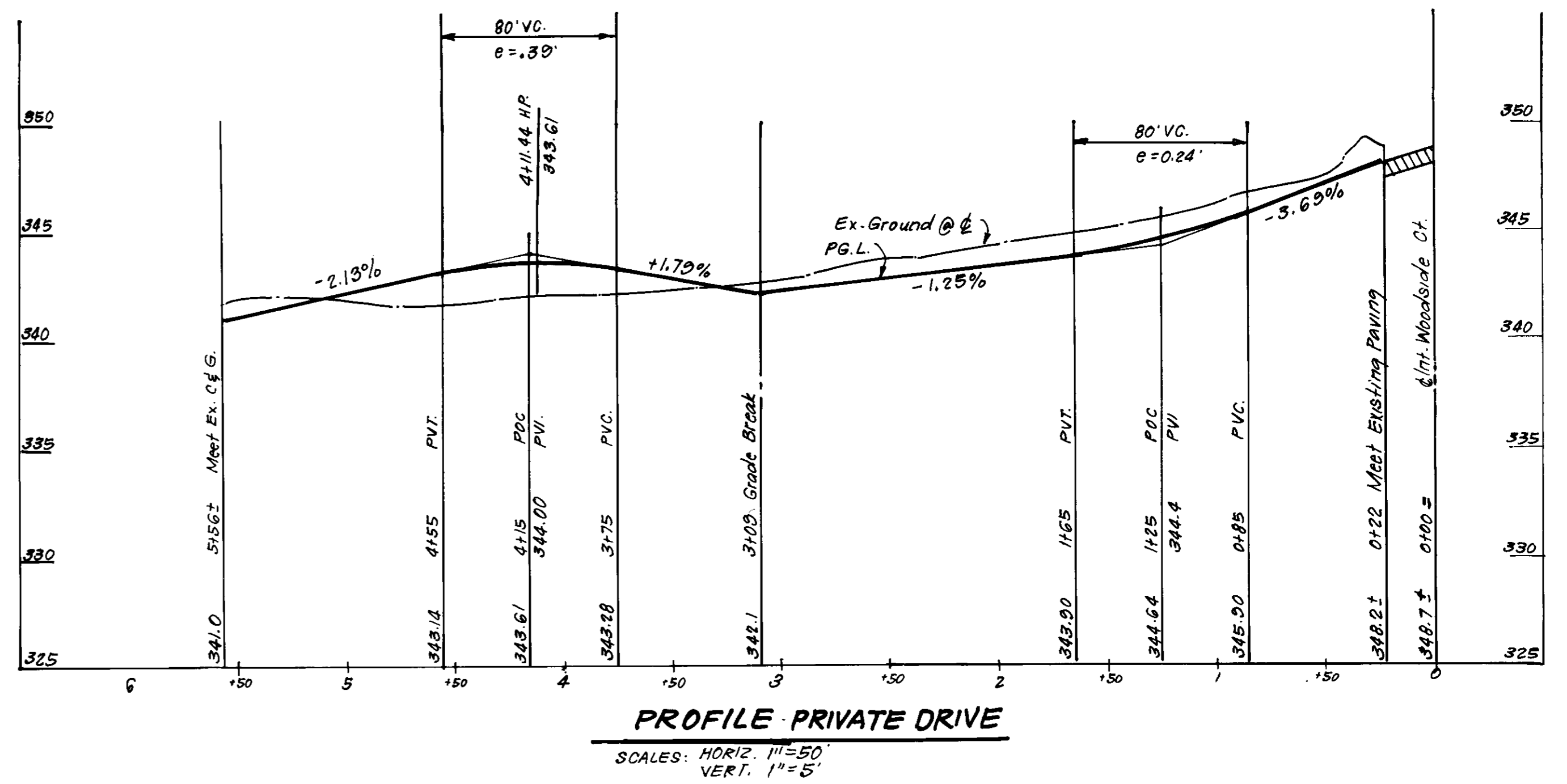
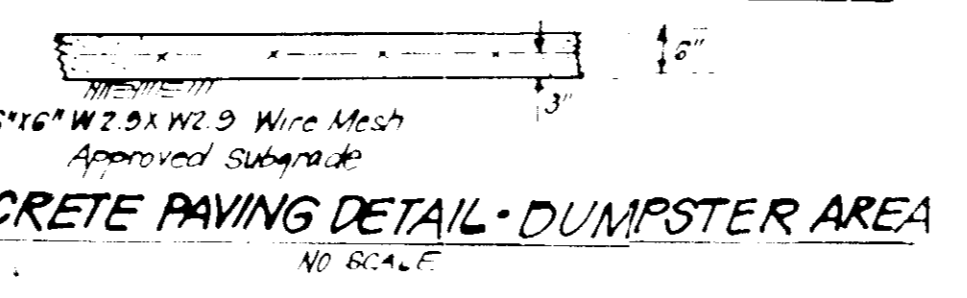
AS-BUILT



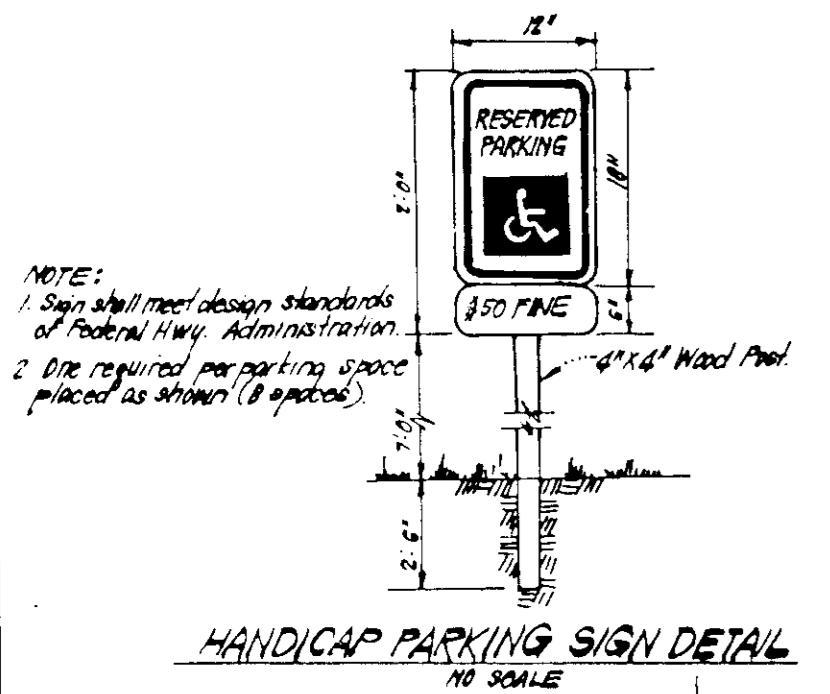
COLOURS
 2025101 and 2012101 Green
 2025102 and 2012102 Blue
 2025103 and 2012103 Red



DUMPSTER PAD & ENCLOSURE
 No Scale
 Notes:
 1. Materials and Construction to be in accordance with the Co. Specs & Spec.
 2. See plan view for limits of concrete paving, shown thus: [Symbol]



PROFILE PRIVATE DRIVE
 SCALES: HORIZ. 1"=50'
 VERT. 1"=5'



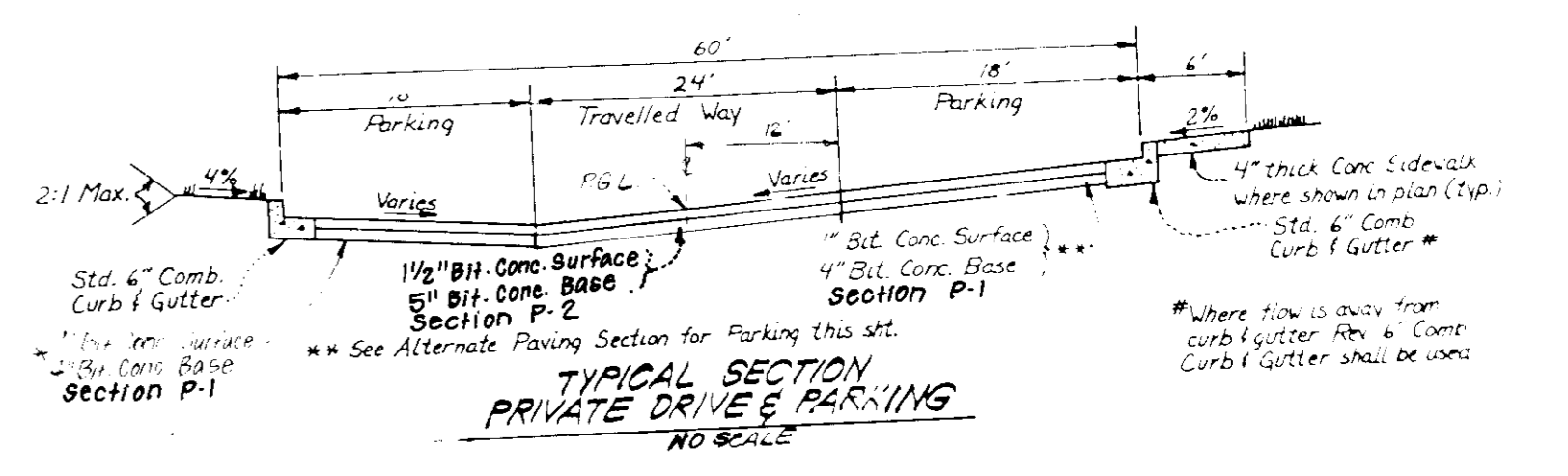
HANDICAP PARKING SIGN DETAIL
 NO SCALE

ALTERNATE PAVING SECTION FOR PARKING AREAS
 NO SCALE (SECTION P-1)

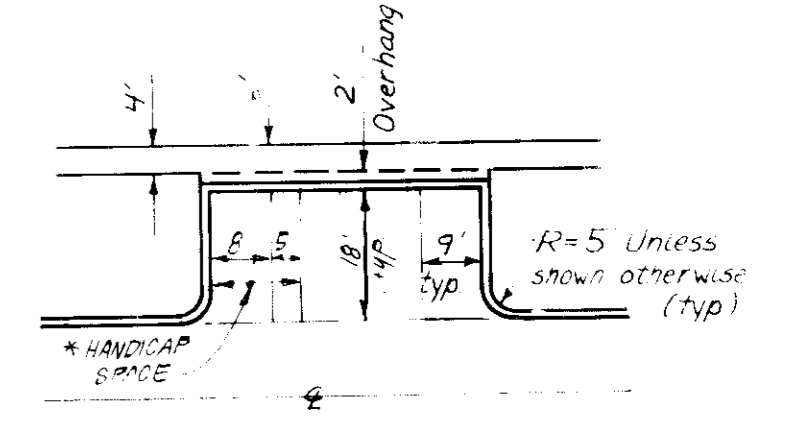
Bituminous Conc. Surface	2"
Bituminous Conc. Base	2"
Prime	
5" Crusher Run Base Course	5"
or	4"
4" Dense Graded Stabilized Aggregate Base Course	4"

ALTERNATE PAVING SECTION FOR PUBLIC ROADS
 NO SCALE (SECTION P-2)

Bituminous Conc. Surface	2"
Bituminous Conc. Base	2 1/2"
Prime	
8" Crusher Run Base (Placed in 2 Courses)	8"
or	6"
6" Dense Graded Stabilized Aggregate Base Course	6"



TYPICAL SECTION PRIVATE DRIVE & PARKING
 NO SCALE



TYPICAL PARKING
 NO SCALE

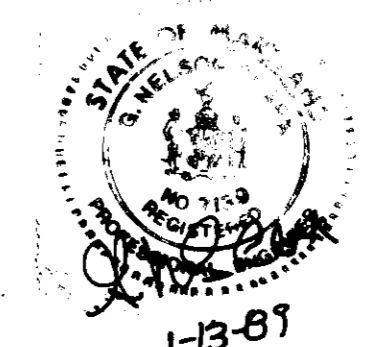
APPROVED FOR PUBLIC WATER AND PUBLIC SEWERAGE SYSTEMS,
 HOWARD COUNTY HEALTH DEPARTMENT
 [Signature] DATE 5-22-89
 CHIEF HEALTH OFFICER

APPROVED: HOWARD COUNTY OFFICE OF PLANNING & ZONING
 [Signature] DATE 5-22-89
 PLANNING DIRECTOR

APPROVED FOR PUBLIC WATER AND PUBLIC SEWERAGE,
 STORM DRAINAGE SYSTEMS AND PUBLIC ROADS
 HOWARD COUNTY DEPARTMENT OF PUBLIC WORKS
 [Signature] DATE 5-16-89
 DIRECTOR

APPROVED
 4-26-89

Jeffery J. Schenk
 10/1/81 For AS-BUILT of
 Initial Station, Trenches
 and Storm Drainage



CLARK • FINEFROCK & SACKETT, INC.
 ENGINEERS • PLANNERS • SURVEYORS
 7135 MINISTREL WAY • COLUMBIA, MD 21046 • PHONE 301-750-1100

DESIGNED: MP JLS
 DRAWN: KIW
 CHECKED: MP JLS
 DATE: 1-13-89

**SITE DEVELOPMENT PLAN
 PARCEL G-2
 PAVING DETAILS
 COLUMBIA**
 VILLAGE OF OWEN BROWN
 SECTION 5 AREA 1
 6TH ELECTION DISTRICT, HOWARD COUNTY, MD.

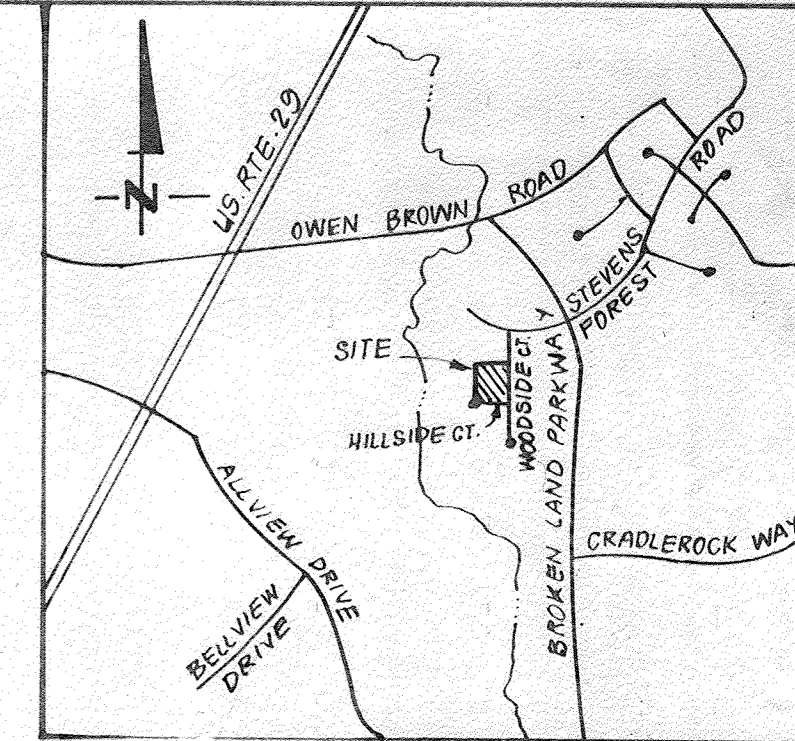
OWNER: The Howard Research and Development Corp
 10275 Little Patuxent Parkway
 Columbia, Md 21048

FOR: CDC - COLUMBIA ASSOCIATION LTD PARTNERSHIP
 1280 Greenbelt Road, Suite 200
 Columbia, Md 21048

AS-BUILT
 10/1/81

LEGEND

Existing Contour	(solid line)	340
Proposed Contour	(dashed line)	340
Spot Elevation	(circle with number)	340.5
Direction of Drainage	(arrow)	
Existing Storm Drain	(line with 'S')	Ex. 15" RCP
Proposed Storm Drain	(line with 'S')	15" RCP
Ex. 8" Sewer	(line with 'S')	Ex. 8" S
Ex. Water	(line with 'W')	Ex. 12" W
Infiltration Trench	(line with 'I')	



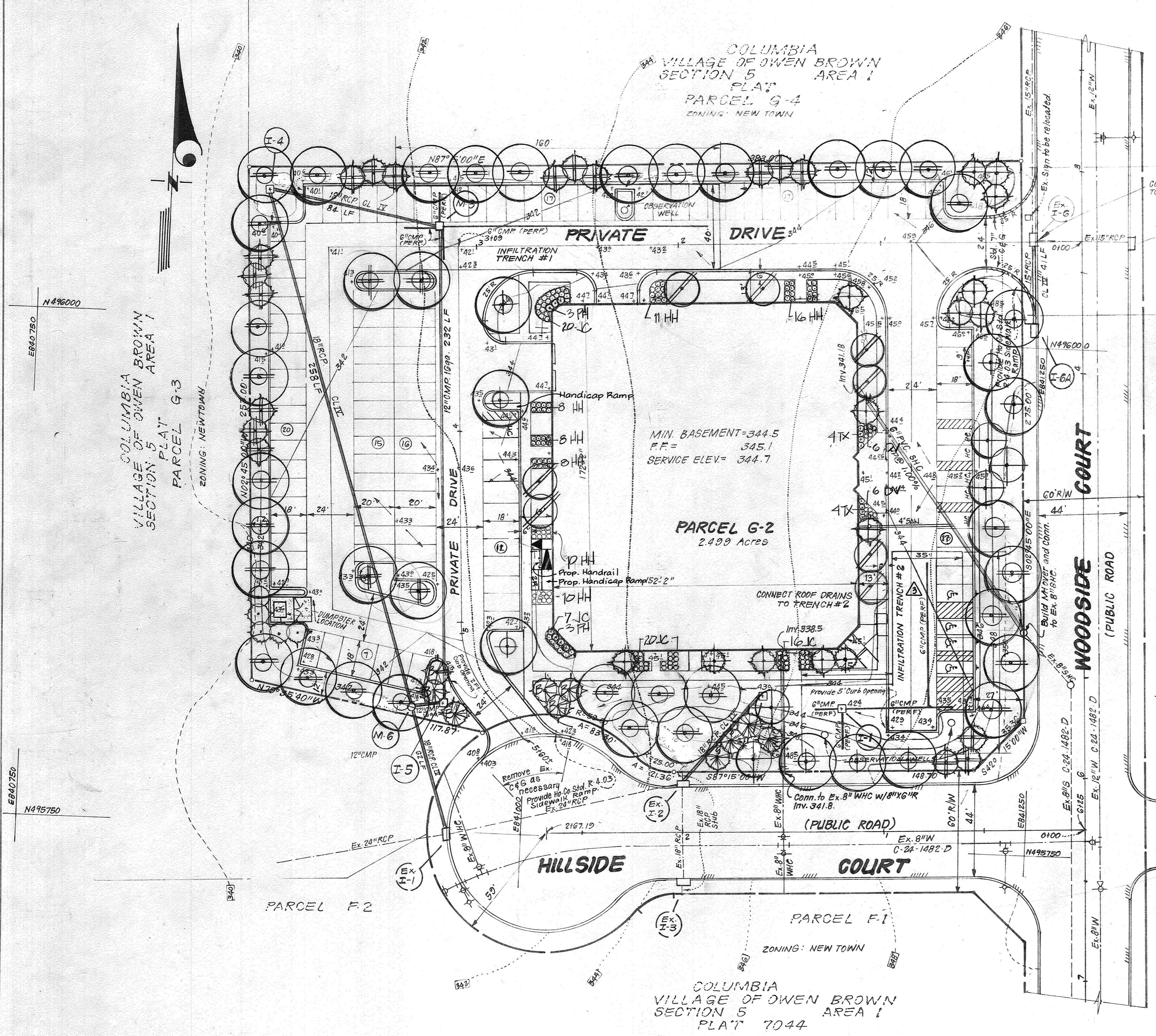
SITE ANALYSIS

1. Zoning:	Employment Center/Commercial
2. Type of Unit Proposed:	Office Building
3. Area Tabulation:	
Total Area of Parcel:	2.499 Acres
Net Leasable Area:	23,525 sq. ft. or 0.5400 Acres
Parking & Drives:	1,033 Acres or 41%
4. Parking Spaces Required:	118
5. Parking Spaces Provided:	123
6. Building Coverage Proposed:	0.601 Ac or 24%
7. Greenspace Provided:	0.865 Ac or 34.6%
8. Handicap Spaces:	Reg'd: 5 ; Proposed: 5

PLANT SCHEDULE

KEY	SHADE TREES	SIZE	QTY.	REMARKS
⊕	ACER RUBRUM 'OCTOBER GLORY'	2 1/2" CAL.	9	B&B HEAVY HEADS
⊕	OCTOBER GLORY RED MAPLE	12-14" HT.		
⊕	ACER SACCHARUM 'GREEN MOUNTAIN'		4	
⊕	GREEN MOUNTAIN SUGAR MAPLE			
⊕	QUERCUS PALMISTRIS		32	
⊕	PIN OAK			
FLOWERING/EVERGREEN TREES				
⊕	CORALIS FLORIDA	2-2 1/2" CAL.	8	
⊕	WHITE FLOWERING DOGWOOD	8-10" HT.		
⊕	PINKS YEDONKAS		5	
⊕	YOSHINO CHERRY			
⊕	PICEA ABIES	6-8" HT.	18	
⊕	NORWAY SPRUCE			
⊕	PINKS NIGRA		14	
⊕	AUSTRIAN PINE			
⊕	PINKS STROBUS		4	
⊕	WHITE PINE			
⊕	PINKS THUNBERGII		6	
⊕	JAPANESE BLACK PINE			
⊕	CUPRESSOCYPRIS x LETLANDII		5	
⊕	LETLANDII CYPRESS			
SHRUBS				
HH	ILEX OPACATA 'HELLERI'	15-18" SPD.	71	
HH	HELLERI HOLLY			
PH	PHOTINIA x FRAZERI	24-30"	6	
PH	FRAZIER PHOTINIA			
JC	JUNIPERUS CONFERTA BLUE PACIFIC	15-18"	63	
JC	SHORE JUNIPER			
DV	AZELEA HYBRID		12	
DV	DELAWARE VALLEY WHITE			
TX	TAXUS x MEDIA DENSIFORMIS	18-24"	8	
TX	DEKE YON			

NOTES:
 - CONTRACTOR SHALL VERIFY LOCATION OF ALL UNDERGROUND UTILITIES PRIOR TO DIGGING.
 - ALL PLANTING SHALL BE DONE IN ACCORDANCE WITH HRP PLANTING SPECIFICATIONS.



APPROVED: FOR PUBLIC WATER AND PUBLIC SEWERAGE SYSTEMS, HOWARD COUNTY HEALTH DEPARTMENT
 Jayce M. Boyd, MD, PH.D. 5-22-89
 COUNTY HEALTH OFFICER
 APPROVED: HOWARD COUNTY OFFICE OF PLANNING & ZONING
 Planning Director 5-22-89
 CHIEF DIVISION OF COMMUNITY PLANNING & LAND DEVELOPMENT
 APPROVED: FOR PUBLIC WATER AND PUBLIC SEWERAGE, STORM DRAINAGE SYSTEMS AND PUBLIC ROADS, HOWARD COUNTY DEPARTMENT OF PUBLIC WORKS
 Director 5-16-89
 CHIEF BUREAU OF ENGINEERING

APPROVED
 PLANNING BOARD
 OF HOWARD COUNTY
 DATE: 4-26-89

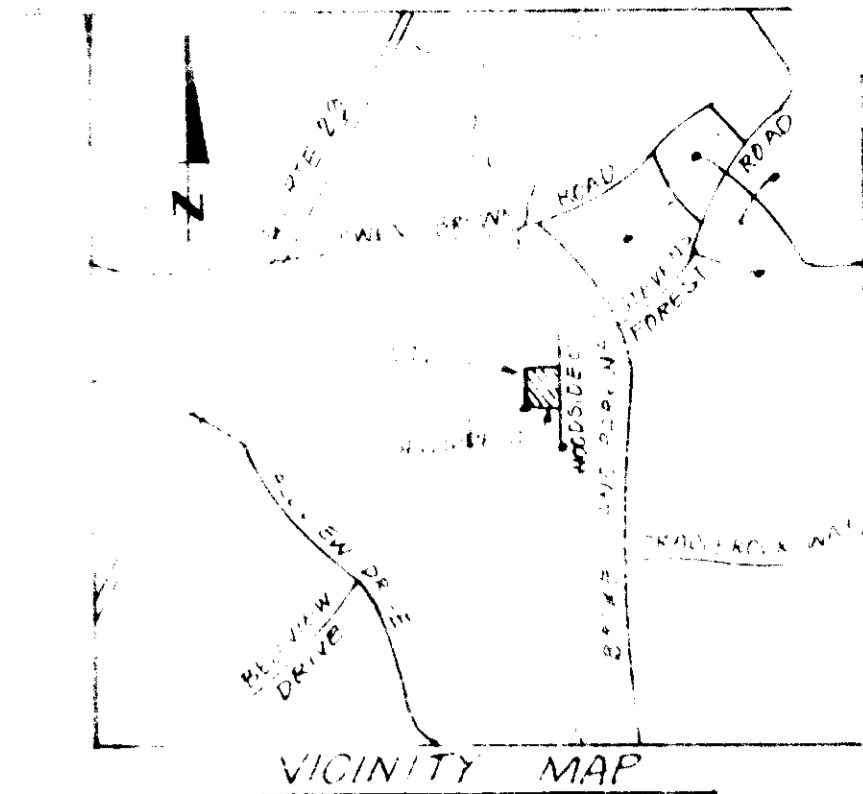
BUILDING ELEVATION
 NO SCALE
 12-8-20
 PROFESSIONAL ENGINEER
 JAMES JOSEPH HARRIS, III
 STATE OF MARYLAND

3	ADD HANDICAP RAMP & PARKING, ADD MEDICAL USE, ADD PROP. USE TENANT TABLE	10-21-20
NO.	REVISION	DATE

For AS-BUILT of
 Infiltration Trenches
 and Storm Drainage

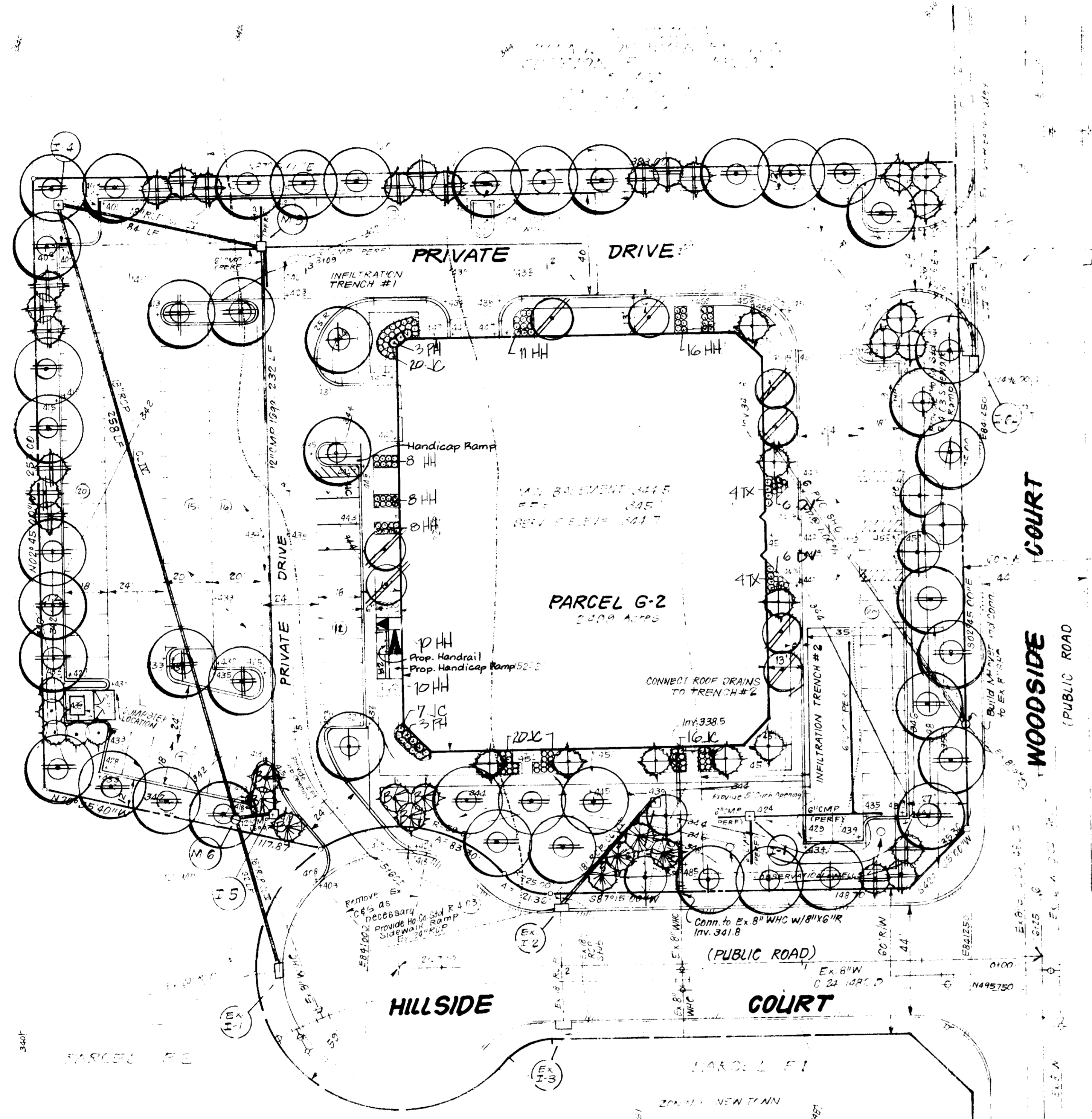
CLARK • FINEFROCK & SACKETT, INC.
 ENGINEERS • PLANNERS • SURVEYORS
 7135 MINISTREL WAY • COLUMBIA, MD 21045 • (301) 381-7200 - BALTO. • (301) 621-8100 - WASH.
LANDSCAPE PLANTING PLAN
 PARCEL G-2
COLUMBIA
 VILLAGE OF OWEN BROWN
 SECTION 5
 AREA 1
 6TH ELECTION DISTRICT, HOWARD COUNTY, MD.
 FOR: C.D.C. COLUMBIA ASSOCIATION LTD. PARTNERSHIP
 8280 Greensboro Drive, Suite 150
 McLean Va. 22102
 DATE: 2-13-89
 SCALE: 1"=30'
 DRAWING: 60F 6
 JOB NO.: 88-154
 FILE NO.: 88-154-L5

LEGEND



SITE ANALYSIS

1. Topography: ...
 2. Soil: ...
 3. Wind: ...
 4. Sun: ...
 5. Water: ...
 6. Noise: ...
 7. Air Quality: ...
 8. Other: ...



PLANT SCHEDULE				
KEY	SHADE TREES	SIZE	QTY.	REMARKS
⊕	ACER RUBRUM COPPER GLORY OCTOPUS GLORY RED MAPLE	12-3" CAL. 12' H HT.	7	PLANT HEAVY
⊕	ACER SACCHARUM GREEN MOUNTAIN GREEN MOUNTAIN SUGAR MAPLE		4	
⊕	QUERCUS FALCATA PIN OAK		32	
FLOWERING/EVERGREEN TREES				
⊕	CORAL FLORIDA WHITE FLOWERING DOGWOOD	2-2 1/2" CAL. 8' TO HT.	8	
⊕	PINKS YEDENAS YOSHINO CHERRY		5	
⊕	PICEA ABIES NORWAY SPRUCE	6'-8" HT.	18	
⊕	PINKS NIGRA AUSTRIAN PINE		14	
⊕	PINKS STROBUS WHITE PINE		4	
⊕	PINKS THUNBERGII JAPANESE BLACK PINE		6	
⊕	CUPRESSOCYPRUS x LEYLANDII LEYLAND CYPRESS		5	
SHRUBS				
HH	ILEX CORNATA 'HELLER' HELLER HOLLY	15-18" x 9"	71	
PH	PHOTINIA x FRAXELI FRAXER PHOTINIA	24-30"	6	
1C	JUNIPERUS CONFERTA BLUE PACIFIC SHORE JUNIPER	18-18"	63	
1V	AZELEA HYBRID DELAWARE VALLEY WHITE		12	
TX	TAXUS x MEDIA DENSIFORMIS DENKE YEW	18-24"	8	

NOTES:
 - CONTRACTOR SHALL VERIFY LOCATION OF ALL UNDERGROUND UTILITIES PRIOR TO DIGGING
 - ALL PLANTING SHALL BE DONE IN ACCORDANCE WITH H.R.D. PLANTING SPECIFICATIONS.

Approved
 12/9/91
 For AS-BUILT of
 Infiltration Trenches
 and Storm Drainage

APPROVED
 4-26-89

APPROVED
 5-16-89

APPROVED
 5-22-89

APPROVED
 5/1/89

APPROVED
 5/16/89

