

VICINITY MAP Scale: 1"=1,000'
 APPROVED: FOR PUBLIC WATER & PUBLIC SEWERAGE SYSTEMS
 HOWARD COUNTY HEALTH DEPARTMENT

Joyce M. Boyd per *E.S.* 7-14-89
 COUNTY HEALTH OFFICER DATE

APPROVED: FOR PUBLIC WATER, PUBLIC SEWERAGE,
 STORM DRAINAGE SYSTEMS & PUBLIC WORKS
 HOWARD CO. DEPT. OF PUBLIC WORKS
[Signature] DATE 7-11-89
 DIRECTOR
 CHIEF, BUREAU OF ENGINEERING

APPROVED: HOWARD COUNTY DEPT. OF
 PLANNING & ZONING
[Signature] DATE 7-20-89
 PLANNING DIRECTOR
 CHIEF, DIV. OF COMMUNITY PLANNING & LAND DEVELOPMENT

SEDIMENT CONTROL
 BY THE DEVELOPER:
 I/WE CERTIFY THAT ALL DEVELOPMENT AND CONSTRUCTION
 WILL BE DONE ACCORDING TO THIS PLAN, AND THAT MANY
 RESPONSIBLE PERSONNEL INVOLVED IN THE CONSTRUCTION
 PROJECT WILL HAVE A CERTIFICATE OF ATTENDANCE AT A
 DEPARTMENT OF NATURAL RESOURCES APPROVED TRAINING
 PROGRAM FOR THE CONTROL OF SEDIMENT AND EROSION
 BEFORE BEGINNING THE PROJECT.
 I ALSO AUTHORIZE THE PERIODIC ON-SITE INSPECTION BY THE
 HOWARD SOIL CONSERVATION DISTRICT.

SIGNATURE OF DEVELOPER DATE
 BY THE ENGINEER:
 I CERTIFY THAT THIS PLAN FOR EROSION AND SEDIMENT
 CONTROL REPRESENTS A PRACTICAL AND WORKABLE PLAN
 BASED ON MY PERSONAL KNOWLEDGE OF THE SITE CONDITIONS
 AND THAT IT WAS PREPARED IN ACCORDANCE WITH THE
 REQUIREMENTS OF THE HOWARD SOIL CONSERVATION DISTRICT.

SIGNATURE OF ENGINEER DATE
 REVIEWED FOR HOWARD S.C.D.
 AND MEETS TECHNICAL REQUIREMENTS.

U.S. SOIL CONSERVATION SERVICE DATE
 THIS DEVELOPMENT PLAN IS APPROVED FOR SOIL EROSION AND
 SEDIMENT CONTROL BY THE HOWARD SOIL CONSERVATION DISTRICT

HOWARD S.C.D. DATE

5-15-89

- LEGEND**
- Proposed Building Setbacks
 - Existing Contour
 - Proposed Contour
 - Field Located Wetlands
 - Existing Sanitary Line
 - Proposed Sanitary Line
 - Existing Storm Drainage Line
 - Proposed Storm Drainage Line
 - Existing Water Line
 - Proposed Water Line
 - Existing Gas Line
 - Proposed Fire Hydrant
 - Proposed Catch Basin
 - Existing Trench Line
 - Proposed Dumpster and Dumpster Pad
 - Transformer Pad
 - Number of Parking Spaces in Alele
 - REVERSE CURB
 - SHOWING THE WALK STREET LIGHT

SITE DATA

Site Acreage 4.148 acres
 Gross Site Acreage (287,787.55 S.F.)
 Building setback requirements:
 1. From public street right of way 30'
 2. Parking setback from public right of way 10' in bumper overhang (12' on face of curb)
 Building Data:
 1. Building coverage 28,504 S.F.
 2. Building gross floor area 28,504 S.F.
 3. Percent of actual building coverage 10.62%
 4. Building height limitation 21'
 5. Actual building height 21'
 Building Use Breakdown:
 1. Health & Fitness Club 15,920 S.F.
 2. Site Down Restaurant - 60 SEATING 65 EMPLOYEES 4,700 S.F.
 3. Print Shop 1,200 S.F.
 4. Service Business 6,784 S.F.

Parking Requirements Data

1. Health Club @ 1/200 R.P.	70 spaces
2. Site Down Restaurant @ 1/4 SEATING 1/2 EMP (24)	24 spaces
3. Print Shop @ 1/200 R.P.	6 spaces
4. Service Business @ 1/200 S.F.	44 spaces
5. Total Parking Required	144 spaces
6. Parking provided	145 spaces (TOTAL SPACES)
7. Handicapped spaces required	3 spaces
8. Handicapped spaces provided	3 spaces (TOTAL SPACES)
9. Area of paving devoted to parking	46,400 S.F.
10. Total area of paving & bldg. coverage	95,618 S.F.

Open Space Data

1. Site overall open space requirement	302 + 287,787.55 S.F. = (54,112 S.F.)
2. Overall site open space provided	55,702 + 287,787.55 S.F. = (311,849.55 S.F.)
3. Landscaped parking islands required (5% of parking pavement area)	51 + 67,244 S.F. = 3363.2 S.F.
4. Landscaped parking islands provided	3,904 S.F. (5.8%)

The owner shall provide a separate and independent sewer connection for each tenant or occupant of this building, shown on this site development plan, who will discharge non-domestic waste to the public sewerage system if this waste is regulated under Section 18.122A of the Howard County Code. Each separate and independent sewer connection shall include a standard manhole and other waste pretreatment devices as required and approved by Howard County. Waste lines on the interior of the building shall be designed, constructed or modified such that non-domestic waste will be discharged to the separate and independent sewer connection. No tenant or occupant of any building shown on this site development plan shall discharge regulated non-domestic waste to the public sewerage system prior to installation of the separate and independent sewer connection and related interior waste lines. The above requirements shall apply to all initial and future occupants or tenants.



F-80-151
 14-1447-D
 F-89-234

ADDRESS CHART		SUBDIVISION NAME	
LOT NUMBER	STREET ADDRESS	DORSEY BUSINESS CENTER	SEC. 1 AREA 1
PARCEL D	6801 DOUGLAS LEGUM DRIVE	PLAY NO. OR LOT/BLOCK NO./ZONE	TAX/ZONE MAP ELEC. DIST. / CENSUS TR.
		5715	6 M-2 43 / 7 6012
		WATER CODE	SEWER CODE
		B01	224000

DORSEY BUSINESS CENTER LIMITED PARTNERSHIP
 6797 DORSEY ROAD
 BALTIMORE, MD. 21227
 PH. 796-3223

No.	REVISION	DATE	BY
1	REVISED S.H.C.	6/12/89	GFO
2	REVISED PARKING	6/12/89	GFO
3	REVISED VOLUME OF EX. S.W.M. POND #4	6/12/89	GFO
4	REVISED PIPE FROM M-1 TO E-3	6/12/89	GFO
5	REVISED PIPE FROM I-9 TO I-5	1/19/90	GFO
6	REVISED PIPE FROM I-8 TO I-7	1/19/90	GFO

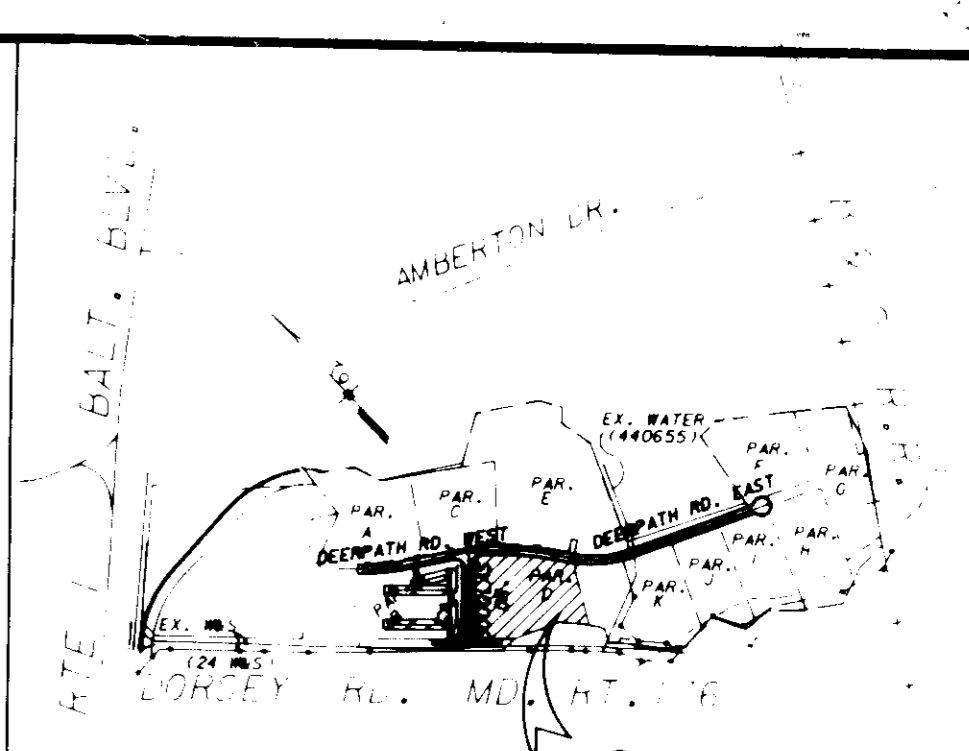
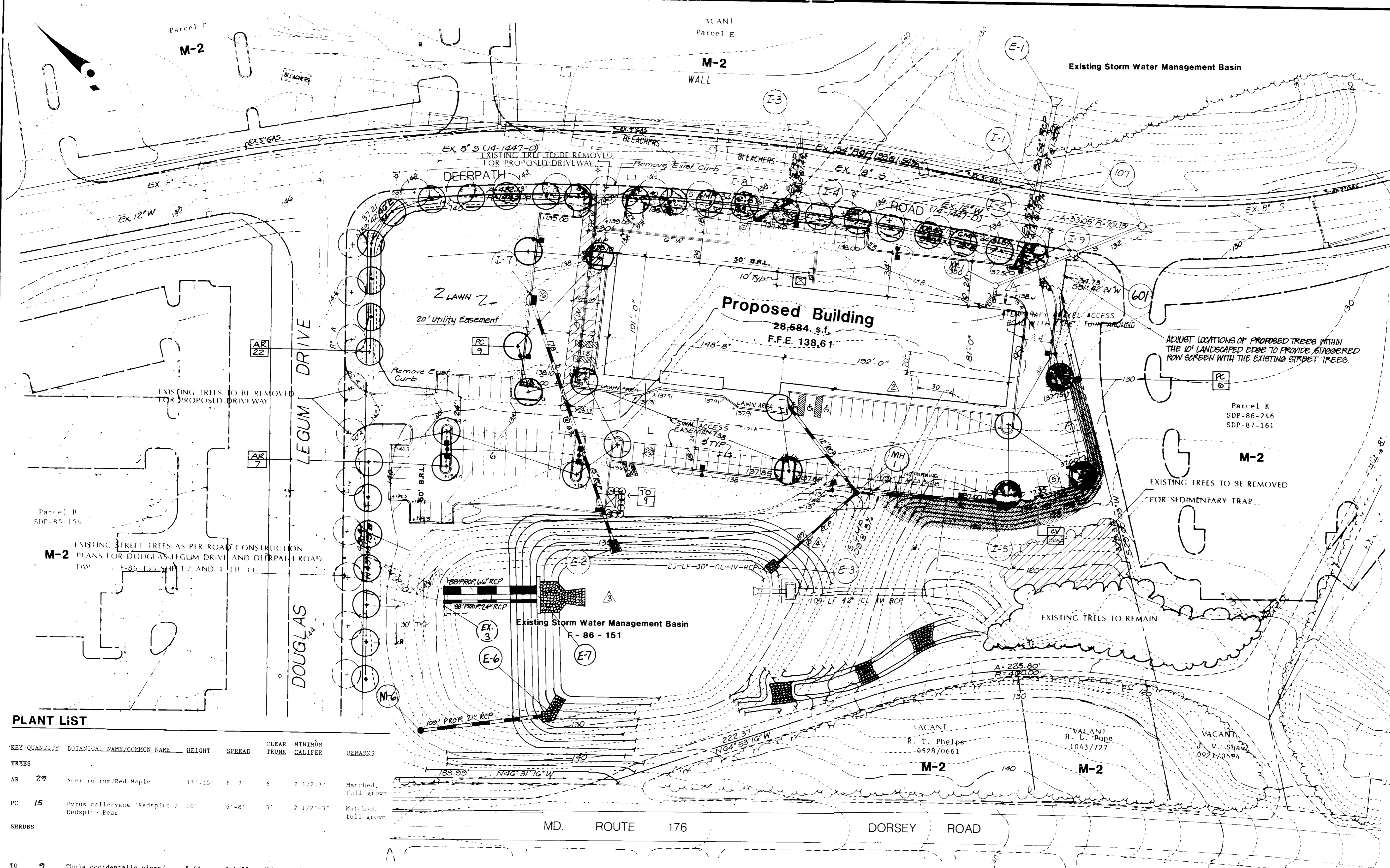


GREENHORNE & O'MARA, INC.
 113 WEST ROAD, SUITE 208, BALTIMORE, MARYLAND 21204
 (301) 296-4100
 ANNAPOLIS MD • ATLANTA GA • AURORA CO • CULPEPER VA • EXPORT PA • FAIRFAX VA
 GREENBELT MD • MANASSAS VA • MONROE MI • RALPHIGH NC • ROCKVILLE MD • TAMPA FL

SITE DEVELOPMENT PLAN
DORSEY BUSINESS CENTER
 PLAT 69-15-8715 TAX MAP 43 ZONE M-2 ZONING MAP 43
 PARCEL D SECTION 1
 HOWARD CO., MARYLAND

DLM DESIGN	SCALE 1" = 40'
RLP DRAWN	1 OF 8
RHM CHECKED	SHEET
11/30/88 DATE	JOB No. FILE No.

SDP-89-112 E-1066-V



VICINITY MAP Scale: 1"=1,000'

APPROVED: FOR PUBLIC WATER & PUBLIC SEWERAGE BY THE HOWARD COUNTY HEALTH DEPARTMENT
 Joseph M. Boyd, M.D., F.S. 7-14-89
 HEALTH DEPARTMENT

APPROVED: FOR PUBLIC WATER, PUBLIC SEWERAGE, STORM DRAINAGE SYSTEMS & PUBLIC ROADS BY HOWARD COUNTY DEPT. OF PUBLIC WORKS
 James J. Lane 7/1/89
 DIRECTOR OF PUBLIC WORKS

APPROVED: FOR PLANNING & ZONING BY HOWARD COUNTY DEPT. OF PLANNING & ZONING
 [Signature] 7/20/89
 PLANNING & ZONING

BY THE ENGINEER, I CERTIFY THAT THIS PLAN IS A TRUE AND CORRECT REPRESENTATION OF THE WORK DONE BY ME OR UNDER MY SUPERVISION AND THAT I AM A LICENSED PROFESSIONAL ENGINEER IN THE STATE OF MARYLAND.
 [Signature] 7/17/89
 PROFESSIONAL ENGINEER

BY THE ENGINEER, I CERTIFY THAT THIS PLAN IS A TRUE AND CORRECT REPRESENTATION OF THE WORK DONE BY ME OR UNDER MY SUPERVISION AND THAT I AM A LICENSED PROFESSIONAL ENGINEER IN THE STATE OF MARYLAND.
 [Signature] 7/17/89
 PROFESSIONAL ENGINEER

U.S. SOIL CONSERVATION SERVICE
 THIS DEVELOPMENT PLAN IS APPROVED FOR CONSTRUCTION AND SEDIMENT CONTROL BY THE HOWARD COUNTY SOIL CONSERVATION SERVICE.
 HOWARD S.C.D. [Signature]

PLANT LIST

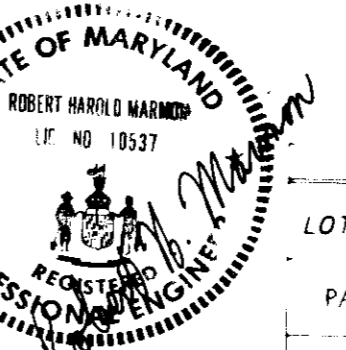
KEY QUANTITY	BOTANICAL NAME/COMMON NAME	HEIGHT	SPREAD	CLEAR TRUNK	MINIMUM CALIFER	REMARKS
TREES						
AR 29	Acer rubrum/Red Maple	13'-15'	6'-7'	6"	2 1/2"-3"	Matched, full grown
PC 15	Pyrus calleryana 'Redspire'/ Redspire Pear	10'	6'-8'	3"	2 1/2"-3"	Matched, full grown
SHRUBS						
TO 9	Thuja occidentalis nigra/ Dark American Arborvitae	5-6'	2 1/2'	N/A	N/A	Single trunk, symmetrical, matched
GROUNDCOVERS						
CV .55 lb/ 1000 ft ²	Coronilla varia/Crown Vetch	N/A	N/A	N/A	N/A	Leguminous seed to be used in S.H.A. seed Mix No. 1
LM 800	Liriodendron tulipifera/Lilyturf	N/A	14"-16"	N/A	N/A	18" o.c., mass planted

NOTE: In the event of any discrepancy in quantities between the Plant List and the Planting Plan, the larger number shall prevail.

NO.	REVISION	DATE	BY
1	REVISED S.H.C.	6-12-89	GFO
2	REVISED PARKING	6-12-89	GFO
3	REVISED VOL. OF EX. SWM POND #4	6-12-89	GFO
4	REVISED PIPE FROM M-1 TO E-3	6-12-89	GFO

DORSEY BUSINESS CENTER LIMITED PARTNERSHIP
 6797 DORSEY ROAD
 BALTIMORE, MD. 21227
 PH. 796-3223

GREENHORNE & O'MARA, INC.
 113 WEST ROAD, SUITE 208, BALTIMORE, MARYLAND 21204
 (301) 296-4100
 ANNAPOLIS MD • ATLANTA GA • AURORA CO • CULPEPER VA • EXPORT PA • FAIRFAX VA
 GREENBELT MD • MANASSAS VA • MONROE MI • RALEIGH NC • ROCKVILLE MD • TAMPA FL



ADDRESS CHART

LOT NUMBER	STREET ADDRESS
PARCEL D	6801 DOUGLAS LEGUM DRIVE

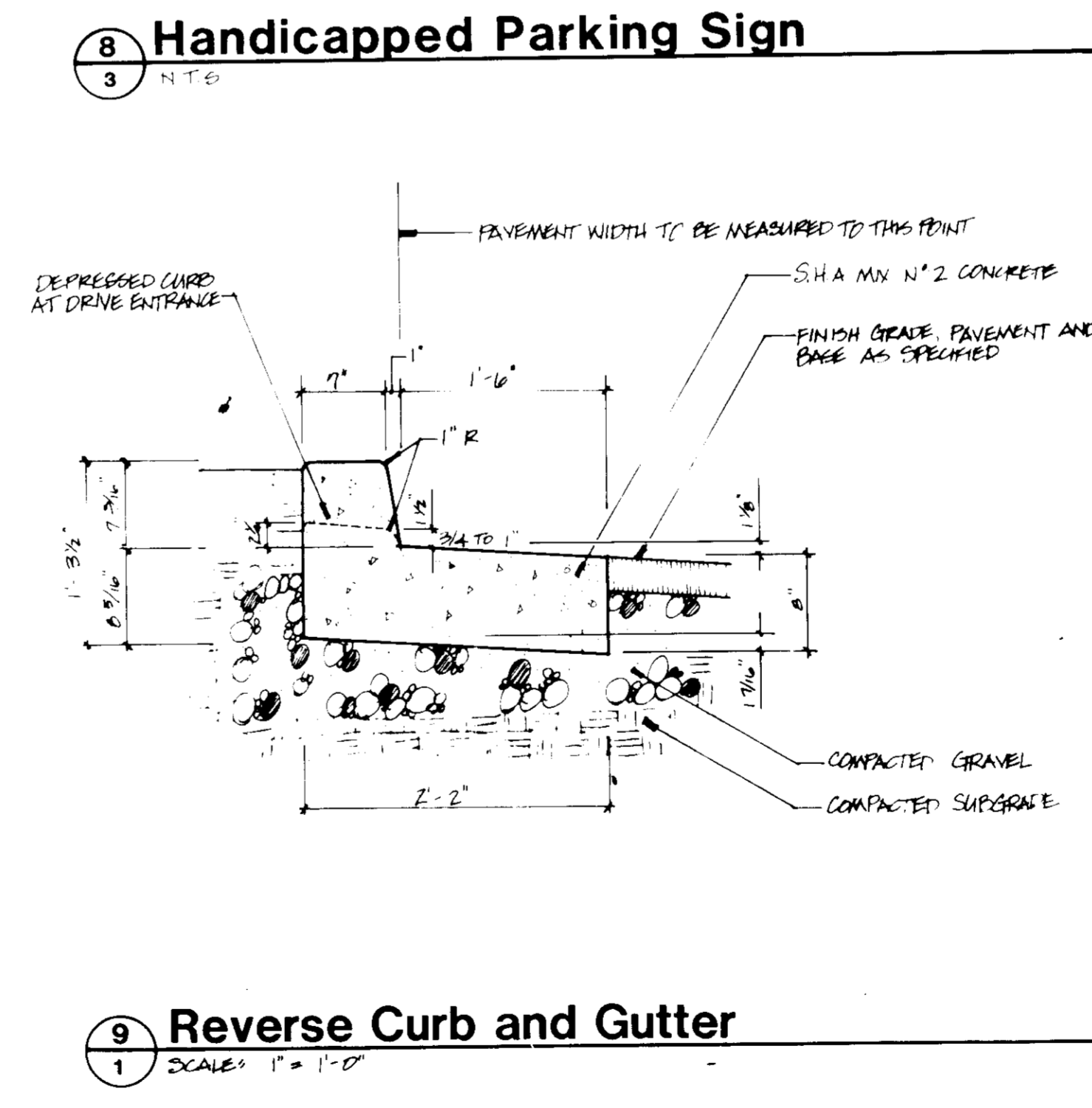
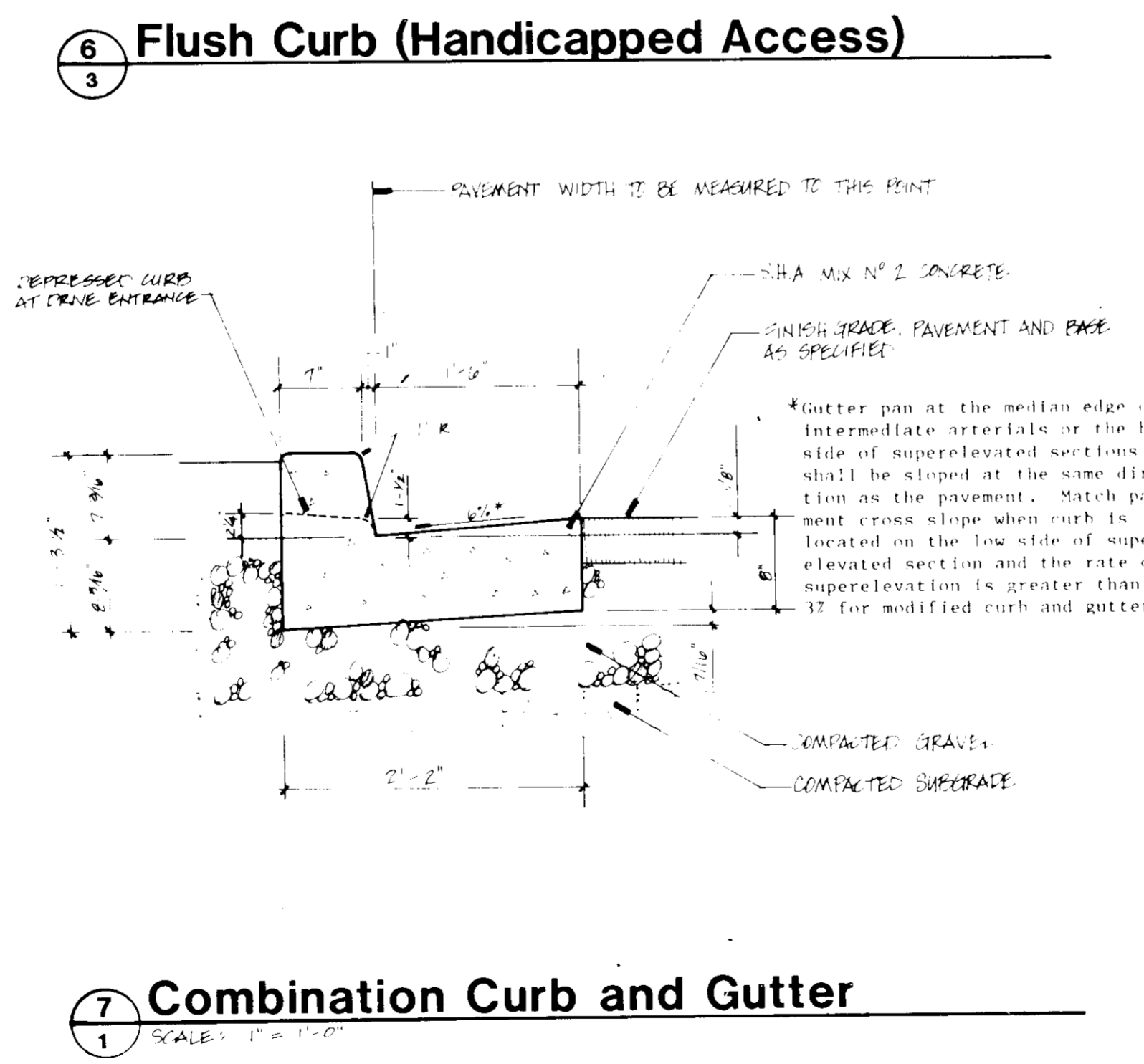
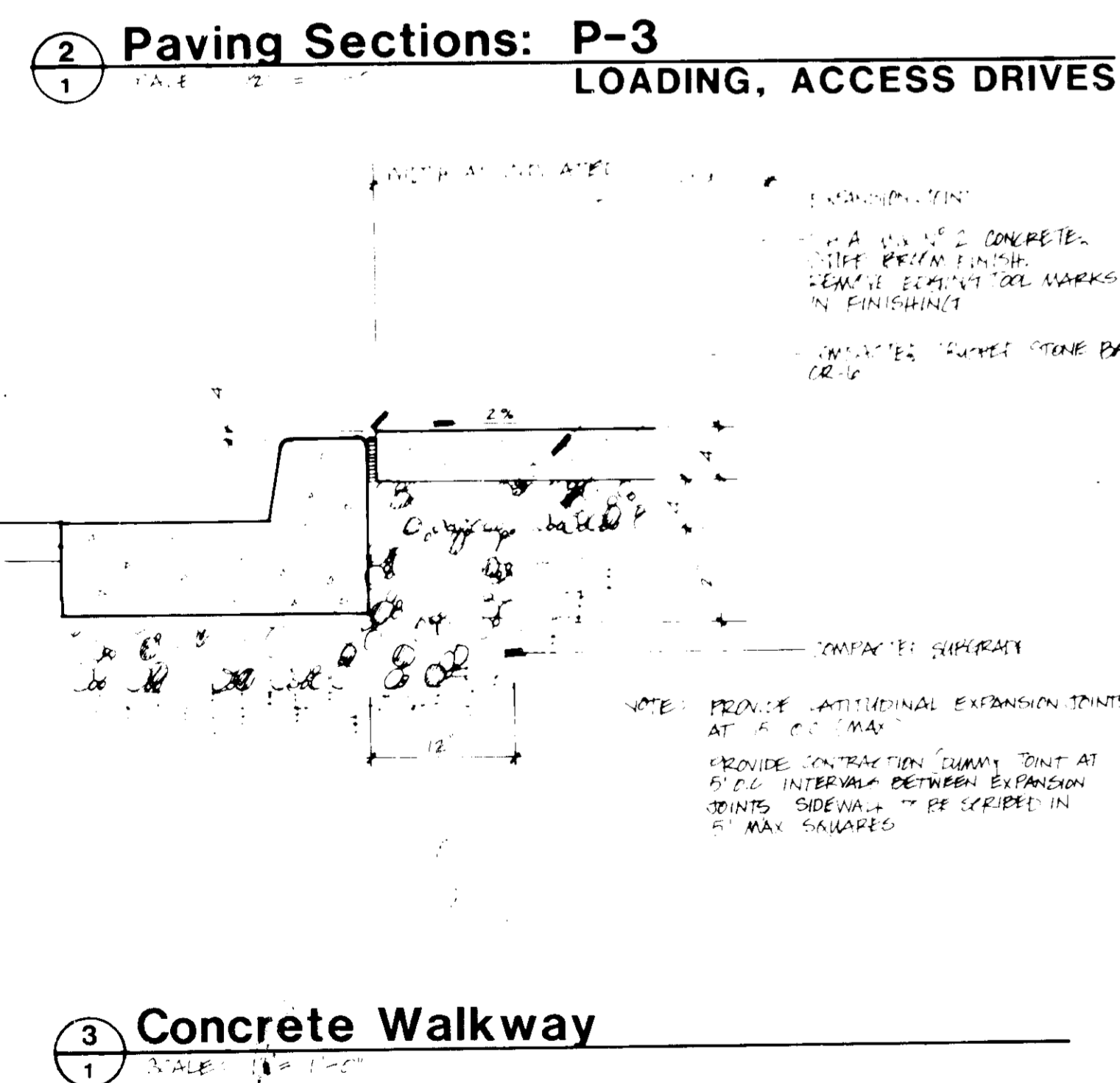
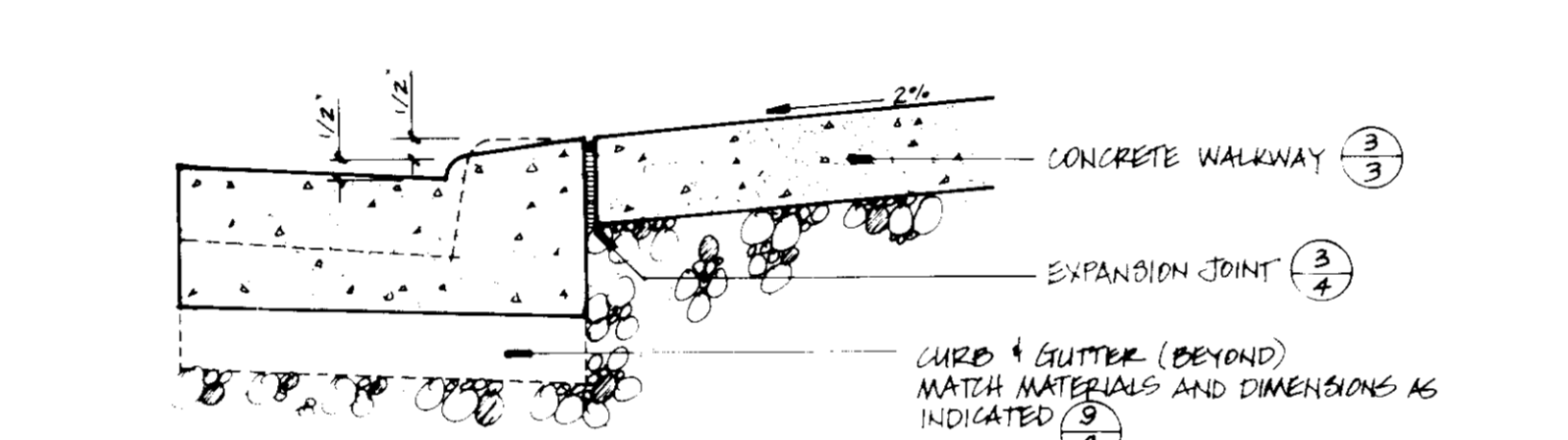
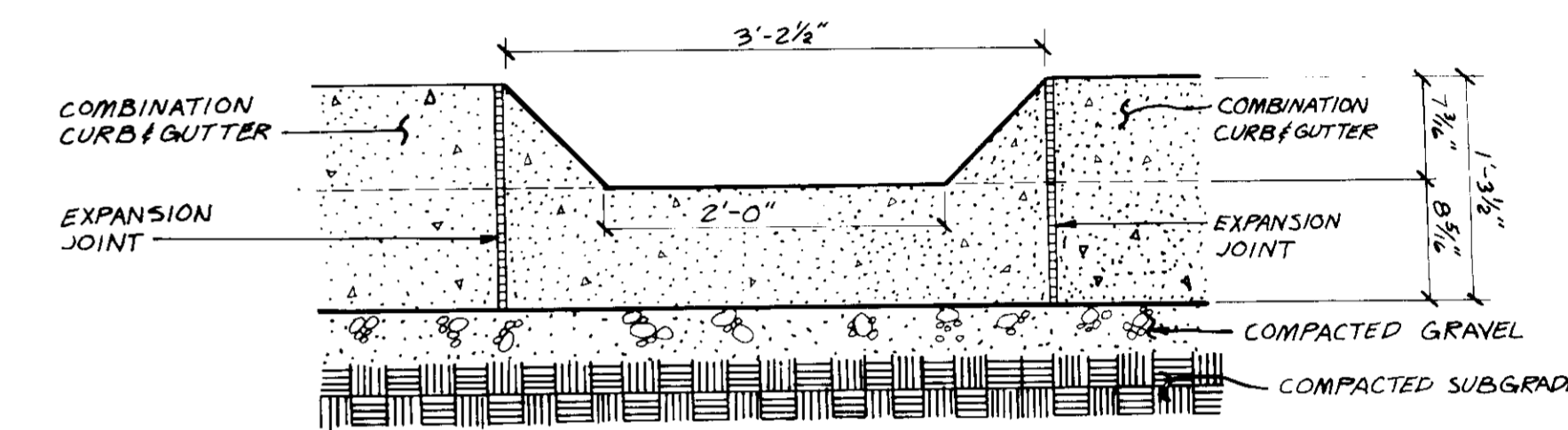
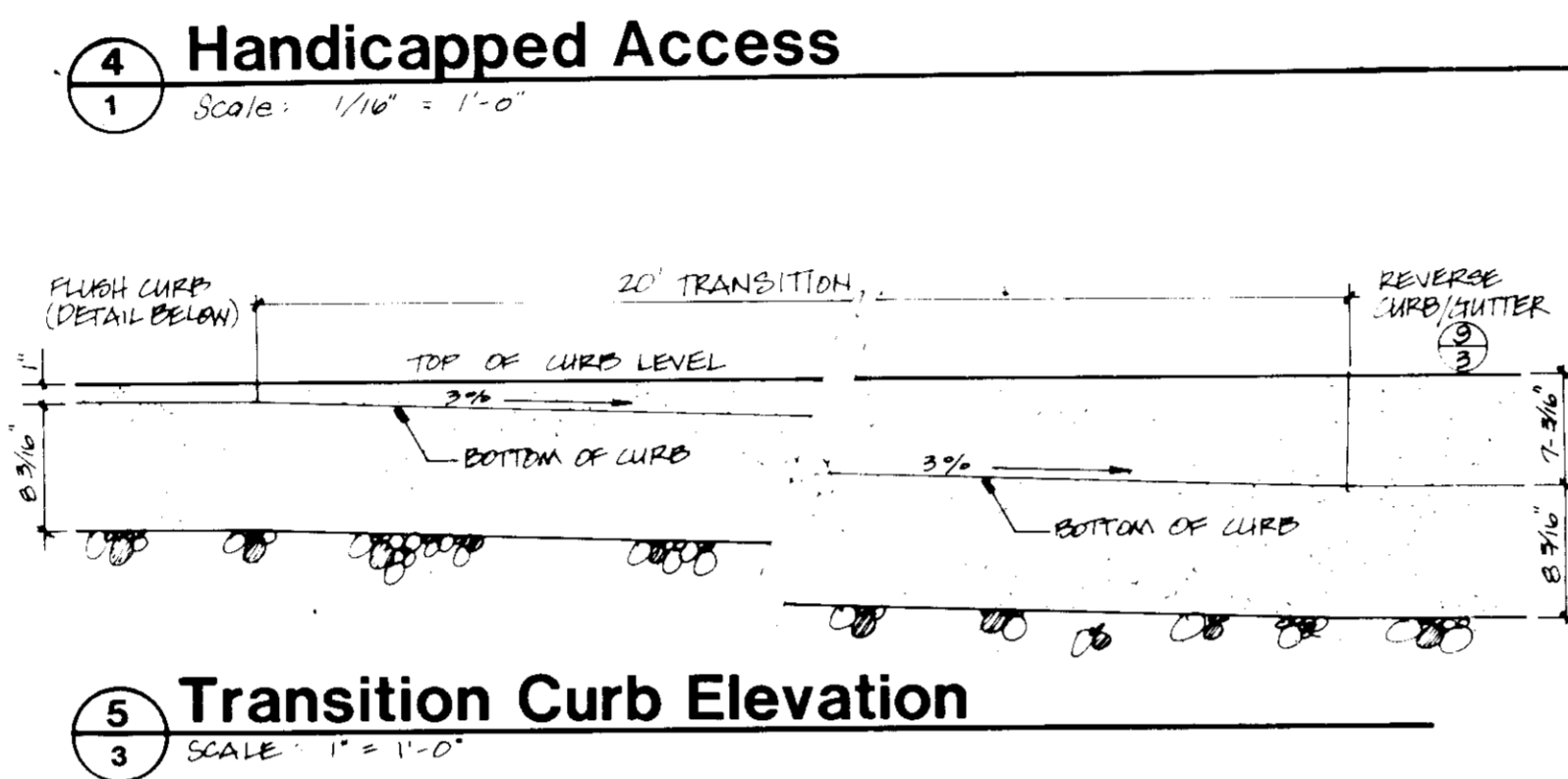
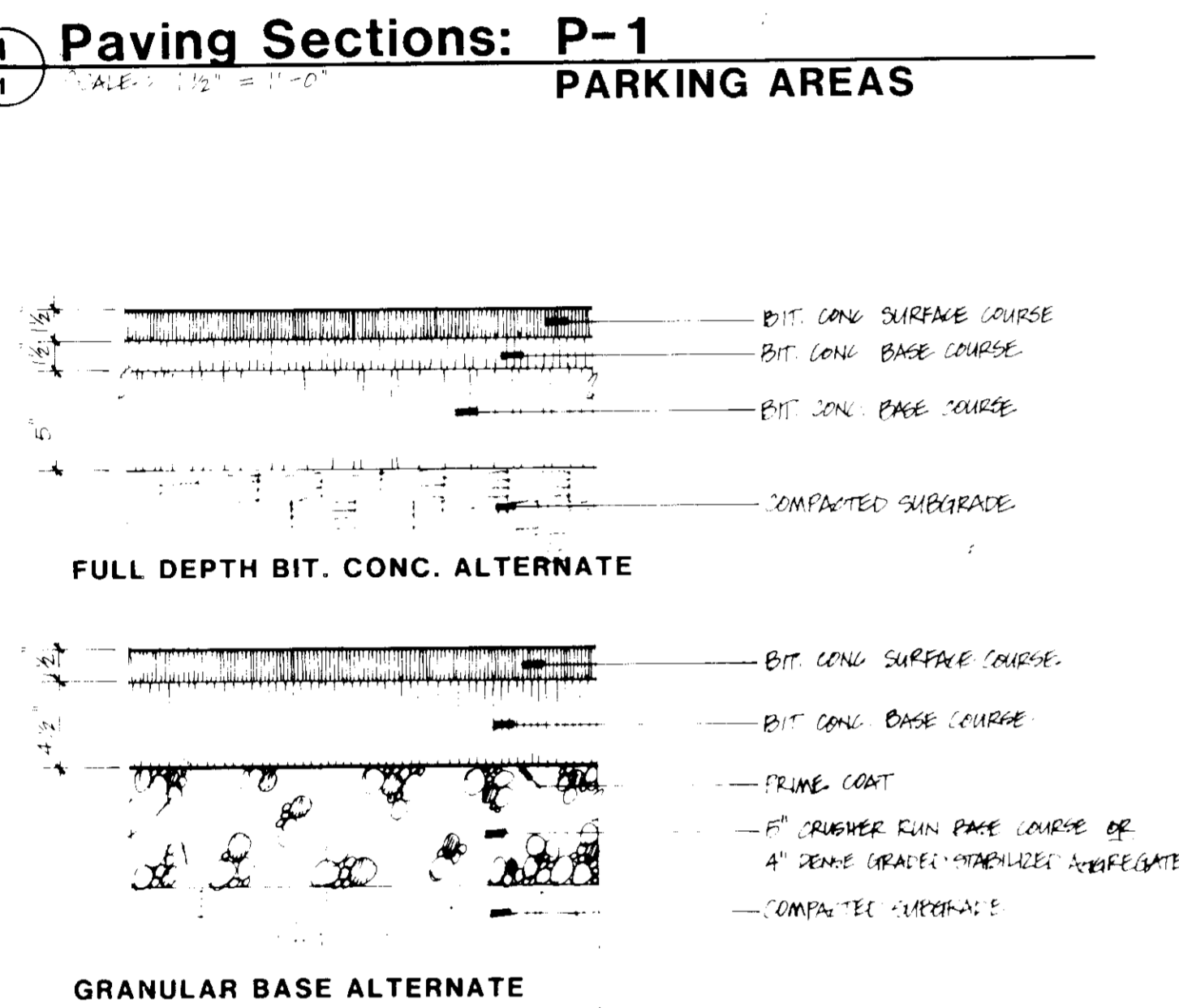
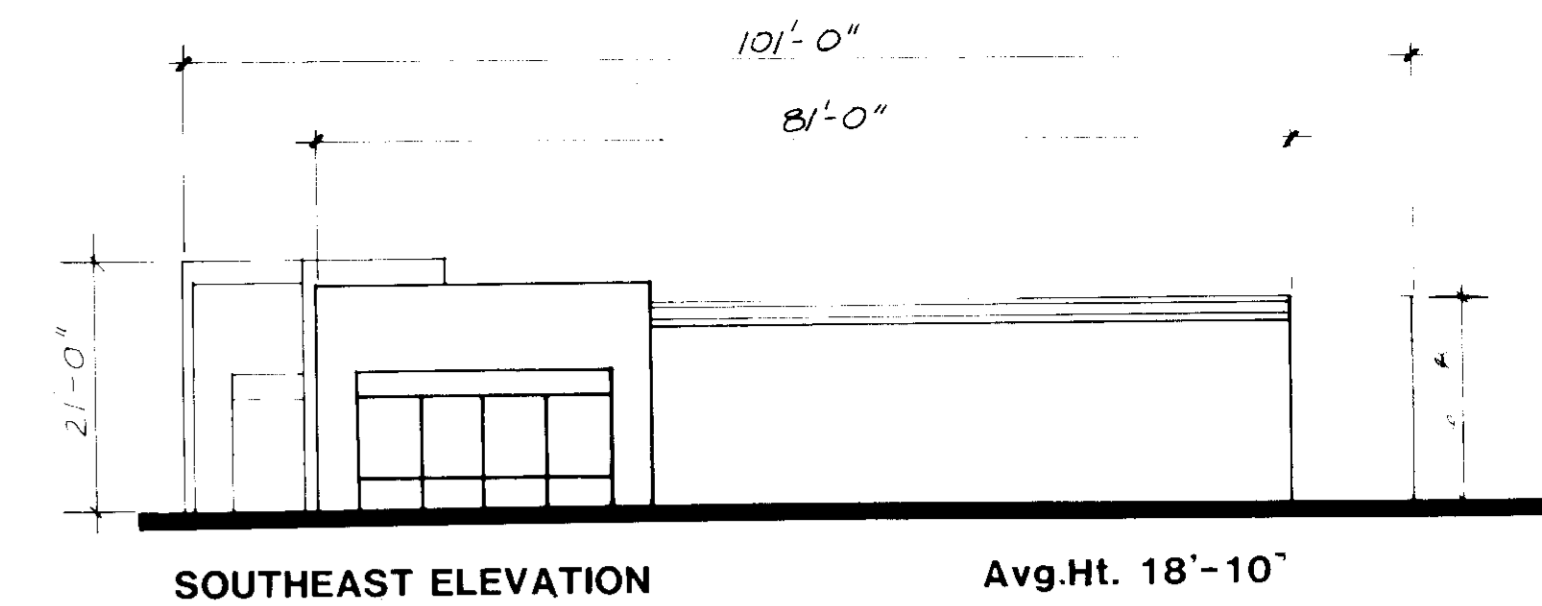
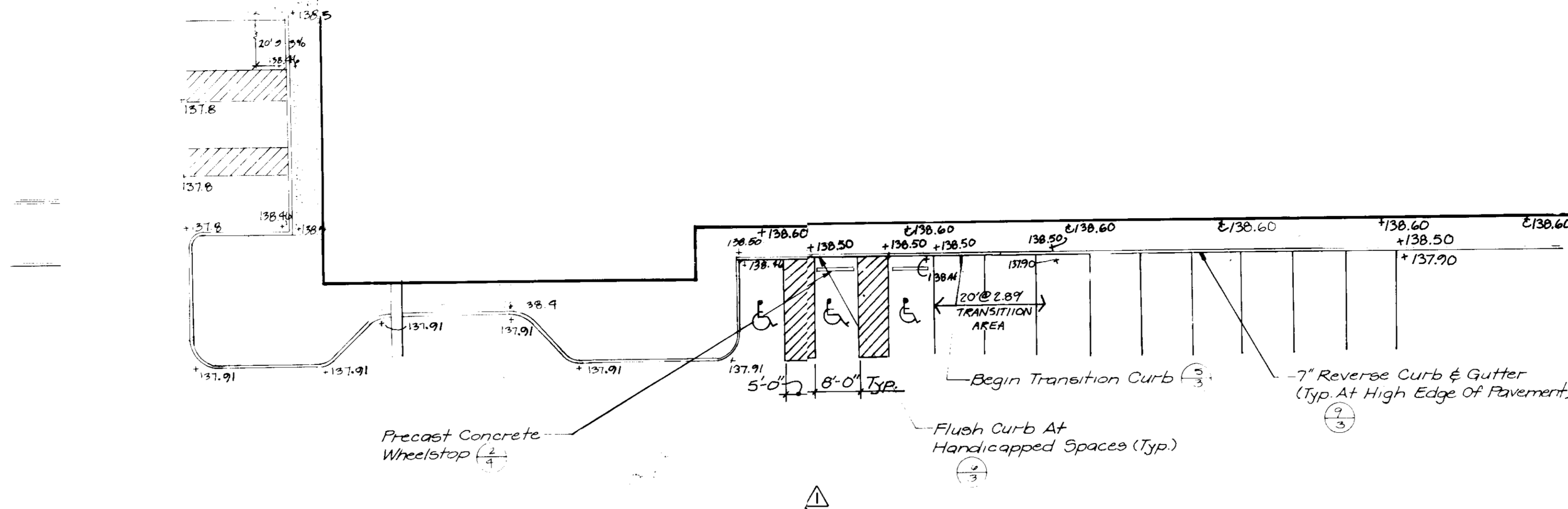
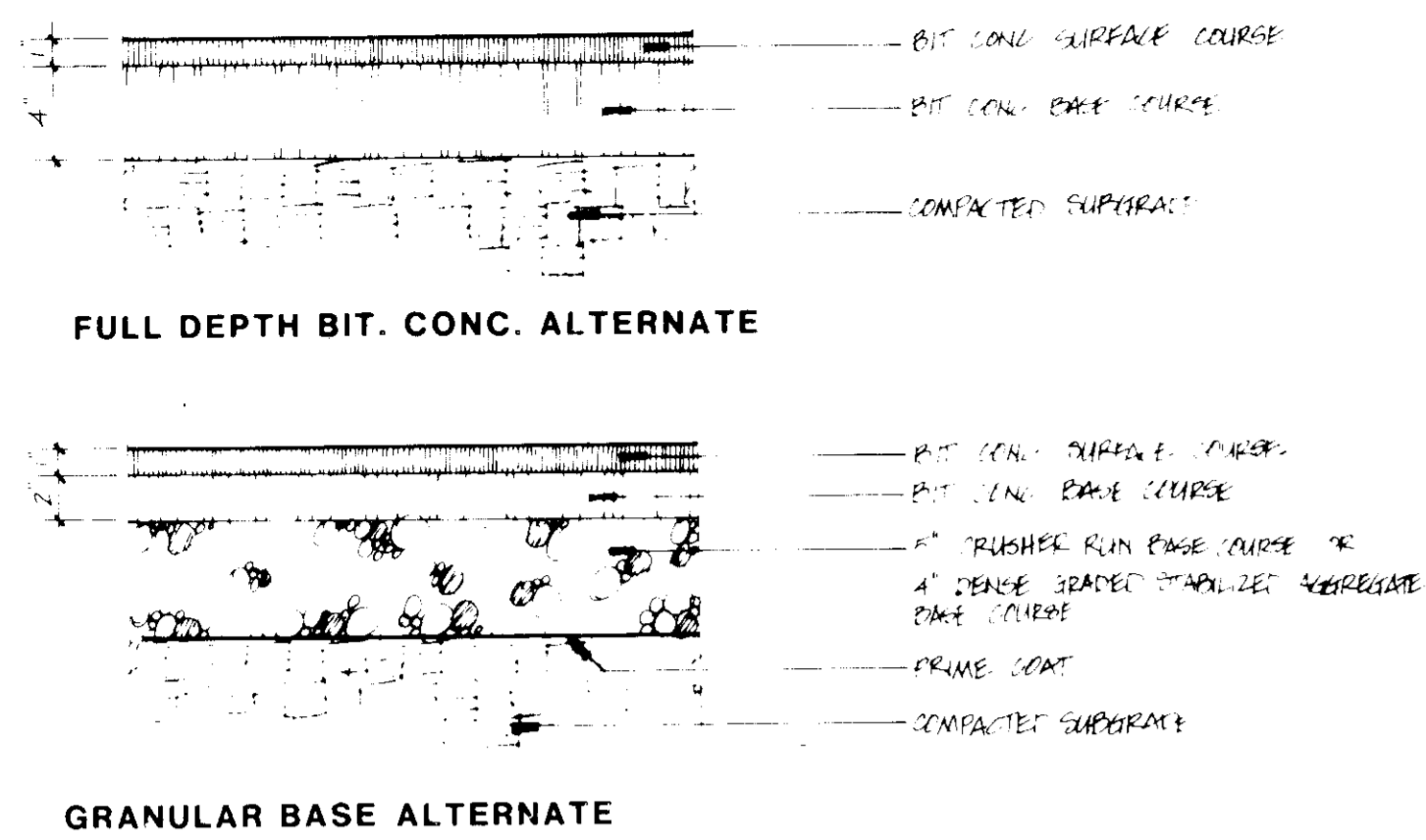
BEFORE BEGINNING CONSTRUCTION, CONTACT MISS UTILITY AT 1-800-257-7777 AT LEAST 48 HOURS PRIOR TO CONSTRUCTION.

SUBDIVISION NAME	SECT./AREA	LOT/PARCEL
Dorsey Business Center	SEC 1	D

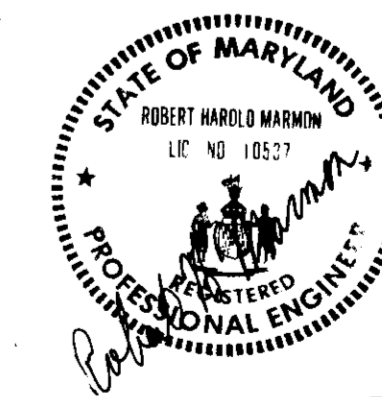
PLAT NO. OR L.F. BLOCK NO. ZONE TAX/ZONE MAP ELEC. DIST. CENSUS TR. 8715 6X M-2 M-2 1 0012
 WATER CODE 801 SEWER CODE 228000

LANDSCAPING PLAN
DORSEY BUSINESS CENTER
 PLAT 6915 8715 TAX MAP 43 ZONE M-2
 PARCEL D SECTION 1
 HOWARD CO., MARYLAND

SVB DESIGN	SCALE
SVB DRAWN	2 OF 8
DLM CHECKED	SHEET
DATE	JOB NO. FILE NO.



HOWARD COUNTY DEPARTMENT OF PUBLIC WORKS APPROVED for Public Water, Public Sewerage, Storm Drainage Systems & Public Roads	<i>James G. ...</i> Director	7/11/89 Date
HOWARD COUNTY HEALTH DEPARTMENT APPROVED for Public Water and Public Sewerage Systems	<i>James G. ...</i> County Health Officer	7-11-89 Date
HOWARD COUNTY DEPT. OF PLANNING AND ZONING APPROVED	<i>...</i> Planning Director	7.20.89 Date
	<i>...</i> Chief, Division of Community Planning & Land Development	7/11/89 Date



DORSEY BUSINESS CENTER LIMITED PARTNERSHIP
 6797 DORSEY ROAD
 BALTIMORE, MD. 21227
 PH. 796-3223

HANDICAPPED ACCESS
 6-12-89 G40

GREENHORNE & O'MARA, INC.
 113 WEST ROAD, SUITE 208, BALTIMORE, MARYLAND 21204
 (301) 296-4100

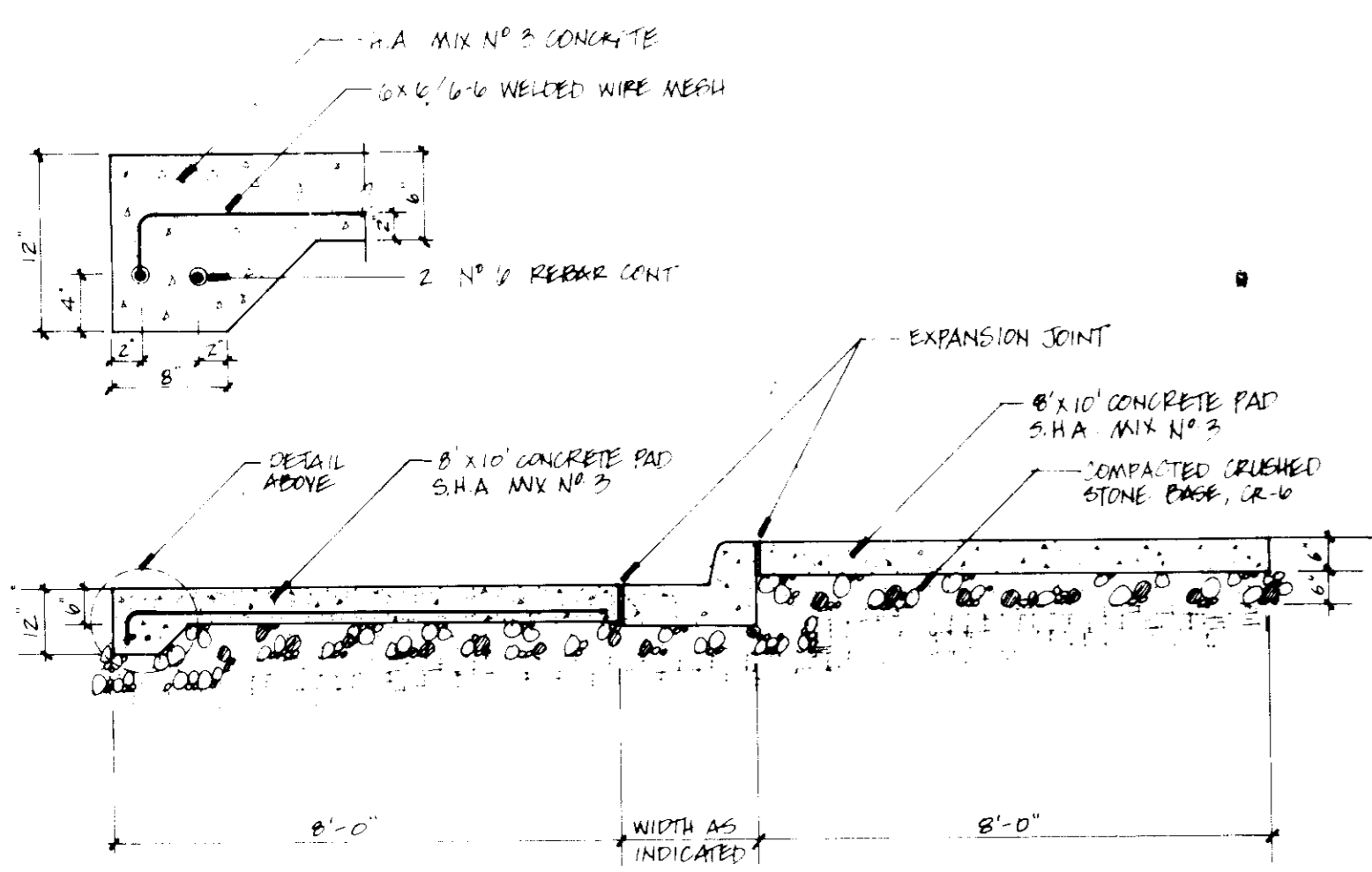
SITE DETAILS
DORSEY BUSINESS CENTER
 PLAT 6945-8715 TAX MAP 43 ZONE M-2 ZONING MAP 43
 PARCEL D SECTION 1
 HOWARD CO., MARYLAND

SVB	AS INDICATED
SVB	3 8
RHW	
DATE	

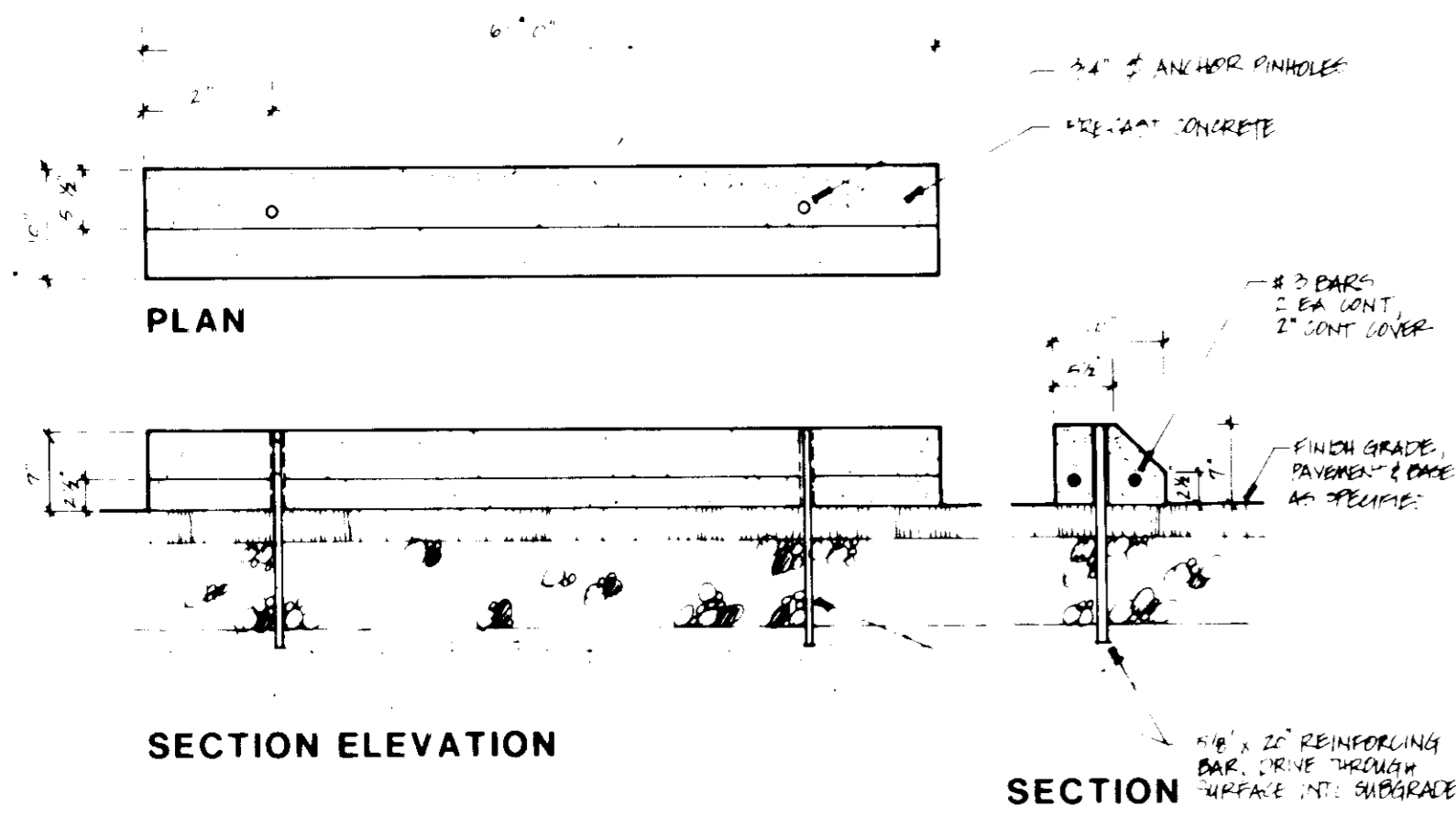
Planting Notes

- Botanical names shall prevail over common names.
 - No plant substitutions shall be made without prior written approval of the Landscape Architect.
 - All plant material shall be nursery grown, no collected materials shall be accepted, unless specifically indicated.
 - Plants shall conform with the American Association of Nurserymen standards in all ways including dimensions.
 - All plants are to be approved and/or tagged by the Landscape Architect. The Landscape Architect has the right to reject any plant materials upon delivery to the project. Selection by the Landscape Architect does not waive the right of rejection.
 - All replacements shall be plants of the same kind and size as specified in the plant list, or as is necessary to match surviving plants of the same planting group. All costs shall be borne by the Landscape Contractor except for replacements resulting from loss or damage due to vandalism or acts of neglect on the part of others, physical damage by animals, vehicles, fire, etc., as may be determined by the Landscape Architect.
 - Quantities shown on the Contract Drawings take precedence over plant materials list. Plant materials shall be furnished and planted as specified. Any deviation from these specifications will be rejected.
 - All plant materials shall be placed, or locations staked, on the site as shown on the planting plan prior to commencement of plant excavation for the Landscape Architect's approval. The Contractor must notify the Landscape Architect of all planting operations a minimum of 48 hours in advance.
 - All plant materials shall be balled and burlapped or container grown or as otherwise specified. No constructed balls shall be accepted. Remove synthetic 'burlap' and synthetic twines and ropes. Remove top 1/3 of metal baskets from root balls when the root ball has been positioned in the planting pit; provide support as necessary to protect the root ball from injury during this operation.
 - All plant materials are to be set with the top of root ball even with or slightly above the finished grade.
 - Planting soil shall consist of 5 parts topsoil (or excavated soil if approved by the Landscape Architect), one part sphagnum moss, one part dehydrated cow manure.
 - All plant beds except as specifically noted, are to be topped with a 3" layer of pine bark mulch. Sample to be approved.
 - Seed all disturbed areas. Grass seed shall be fresh, clean, new crop seed composed of the following varieties mixed in the proportions by weight shown and testing the minimum percentages of purity and germination:

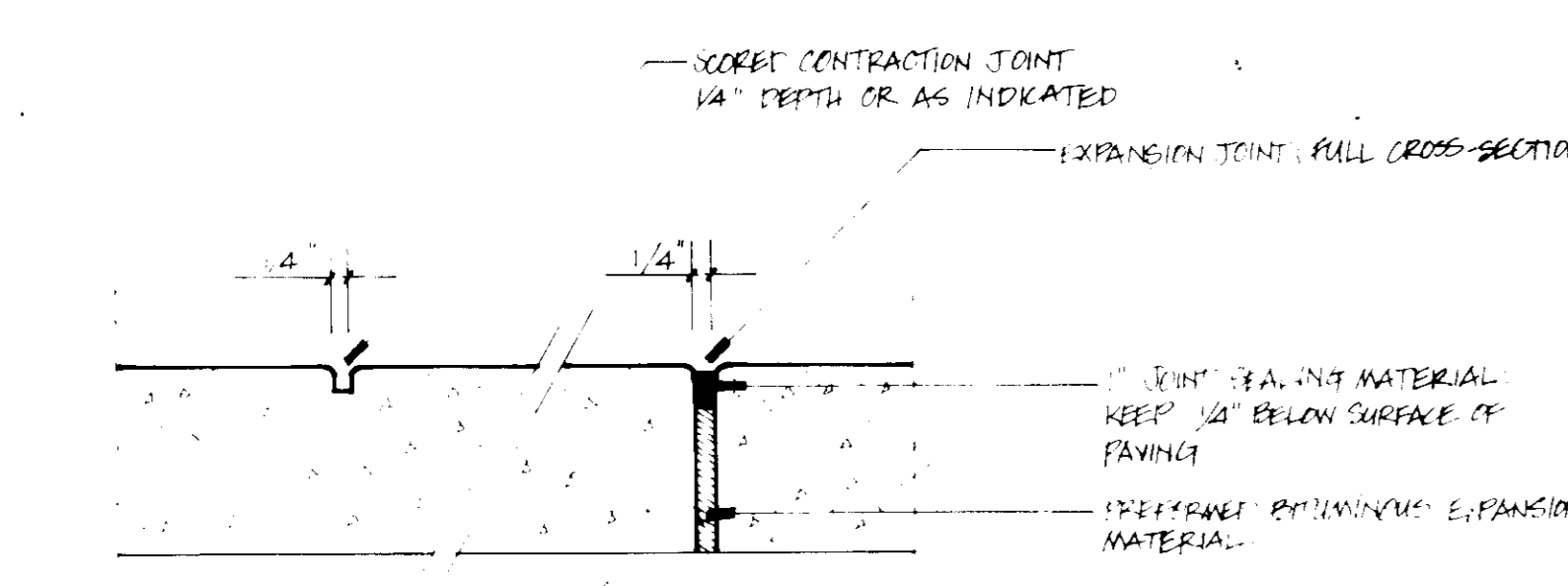
TYPE I	I. BY WT.	TYPE II	I. BY WT.
Perennial Ryegrass	25%	F. 31 Tall Fescue	80%
Kentucky Bluegrass	50%	Annual Ryegrass	20%
(approved hybrid varieties)			
Creeping Red or Pennlawn Fescue	25%		
 - Seeding of lawn areas shall be at the rate of at least 5 lbs. per 1000 square feet. All lawn areas shall be Type I seed mix unless otherwise designated.
 - All lawn areas shall be fertilized with a complete fertilizer, at least half of the nitrogen of which is derived from a natural organic source. It shall be of a 1:1:1 ratio in the spring using a minimum analysis of 10:10:10 and a 1:2:1 ratio in the fall using a minimum analysis of 5:10:5.
 - All lawn areas shall be mulched with salt hay or equal as approved by the Landscape Architect. Straw hay is not permitted.
 - Report any discrepancies to the Landscape Architect immediately for decision.
 - Maintenance shall begin immediately after each plant is planted, and shall continue until acceptance. Plants shall be watered, mulched, weeded, pruned, sprayed, fertilized, cultivated, and otherwise maintained and protected until acceptance of work. Settled plants shall be reset to a proper grade and position, planting saucer restored, and dead material removed. Guys shall be tightened and repaired. Defective work shall be corrected as soon as possible after it becomes apparent, when weather and season permit. Upon completion of planting and prior to acceptance the Landscape Contractor shall remove from the site excess soil and debris and repair disturbed lawn areas and any other damage resulting from planting operations. Dangerous conditions shall be repaired immediately.
 - Upon completion of all landscaping operations, an inspection will be made to determine the acceptability of the job. At this time, a one year guarantee period shall begin, to be culminated by a final inspection. Immediately prior to final inspection, unless otherwise directed, the Contractor shall remove soil saucers, hose, guy wires, wrapping material and stakes. Only those materials found to be alive and in a vigorous, healthy condition at that time will be granted final acceptance. All other material shall be replaced at the Contractor's expense. A sum to cover potential replacements may be withheld if so desired by the owner. The Landscape Architect will be the sole judge of plant material acceptability.
- * Planting after Nov. 21 to be guaranteed thru 2nd spring's leafing.



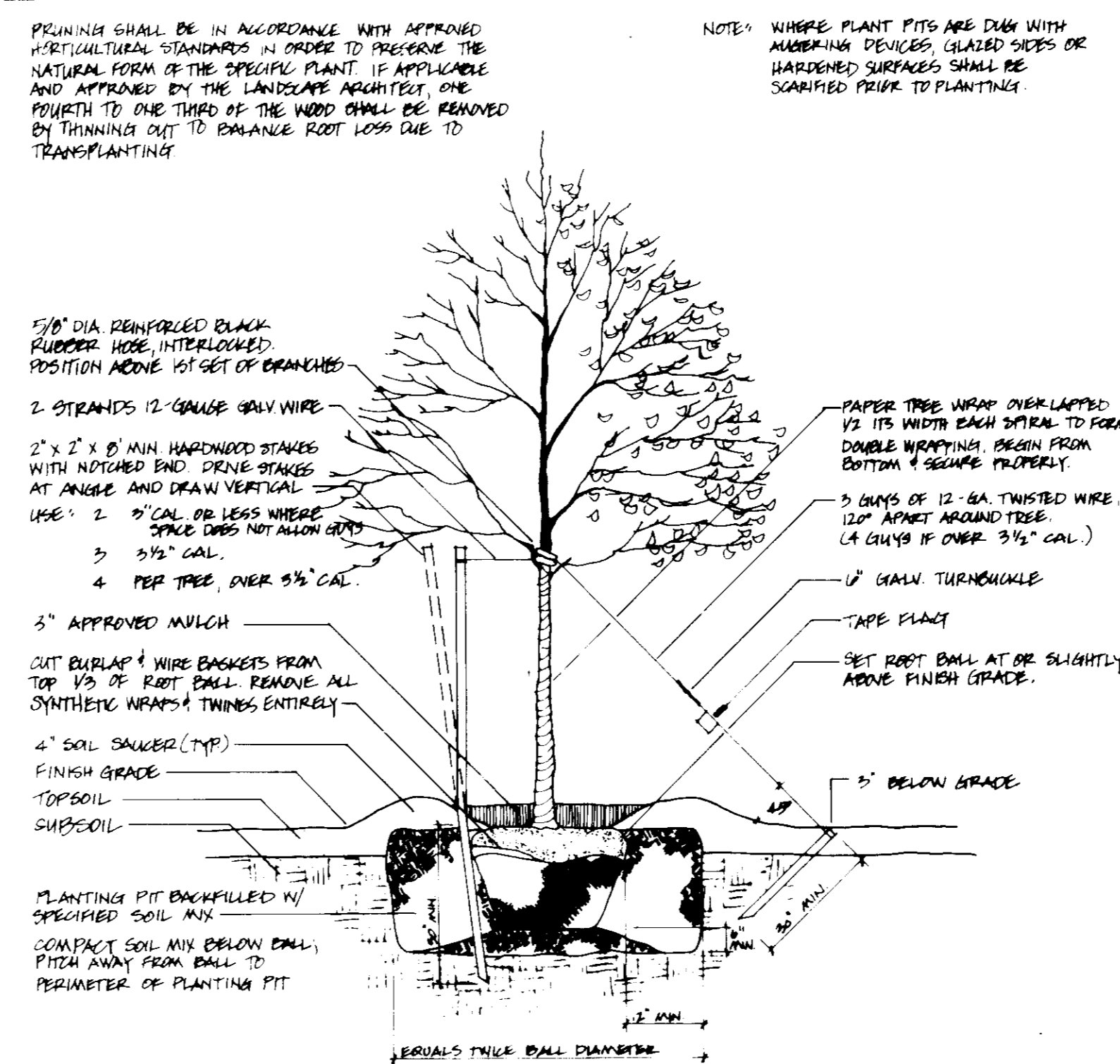
1 Dumpster Pad HO. CO. STD. R 11.01
SCALE: 3/4" = 1'-0"



2 Precast Concrete Wheelstop
SCALE: 3/4" = 1'-0"



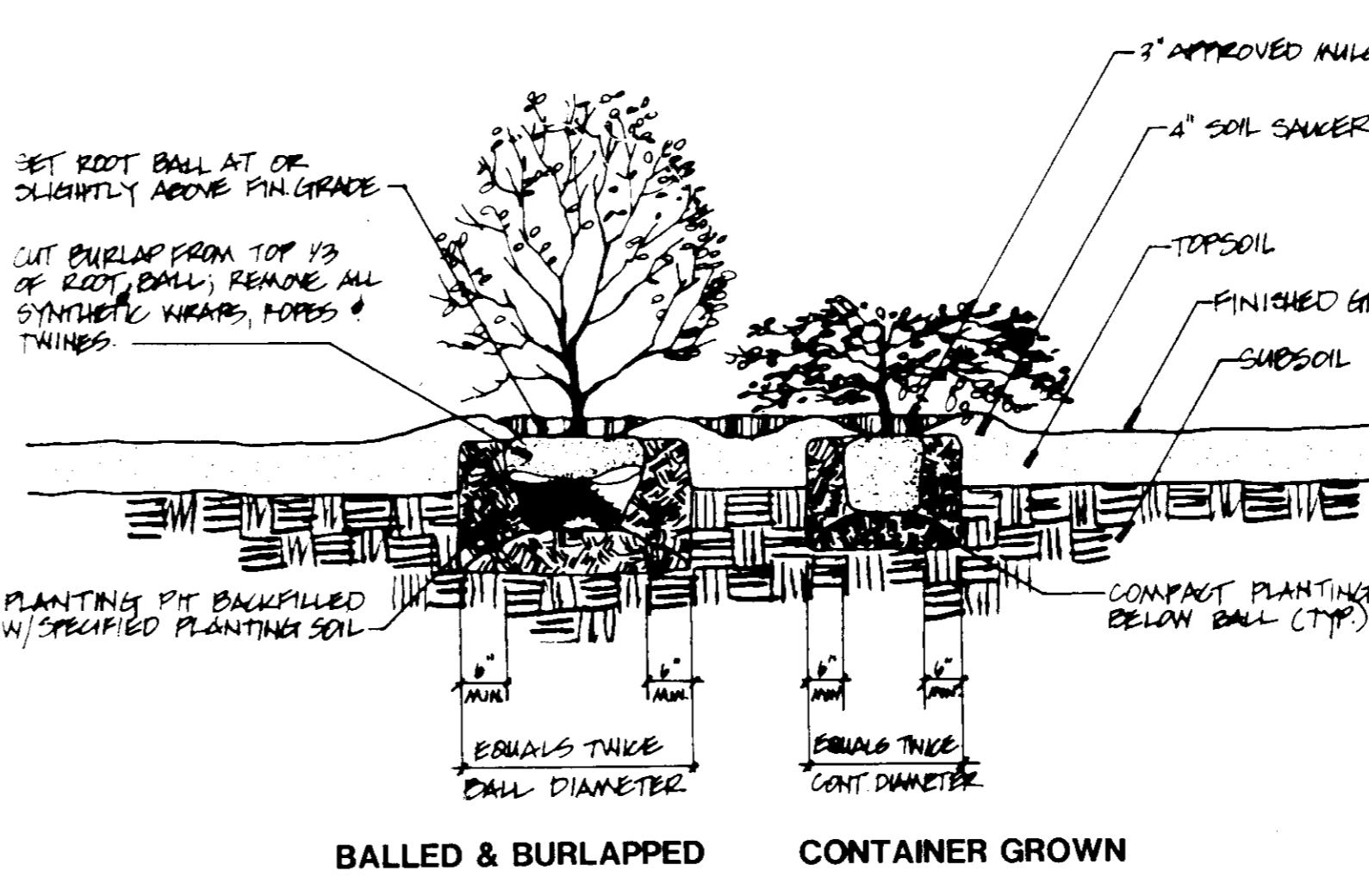
3 Expansion and Contraction Joints
SCALE: 3/4" = 1'-0"



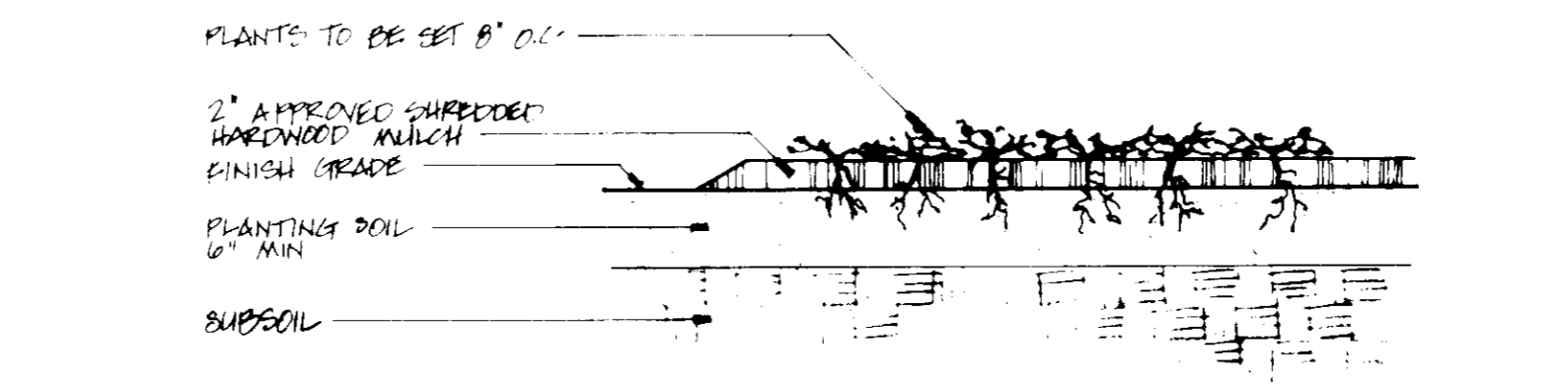
STAKING DECIDUOUS TREES 9" CAL OR LESS
EVERGREEN TREES 8" HT. OR LESS

GUYING DECIDUOUS TREES OVER 3" CAL
EVERGREEN TREES OVER 8" HT.

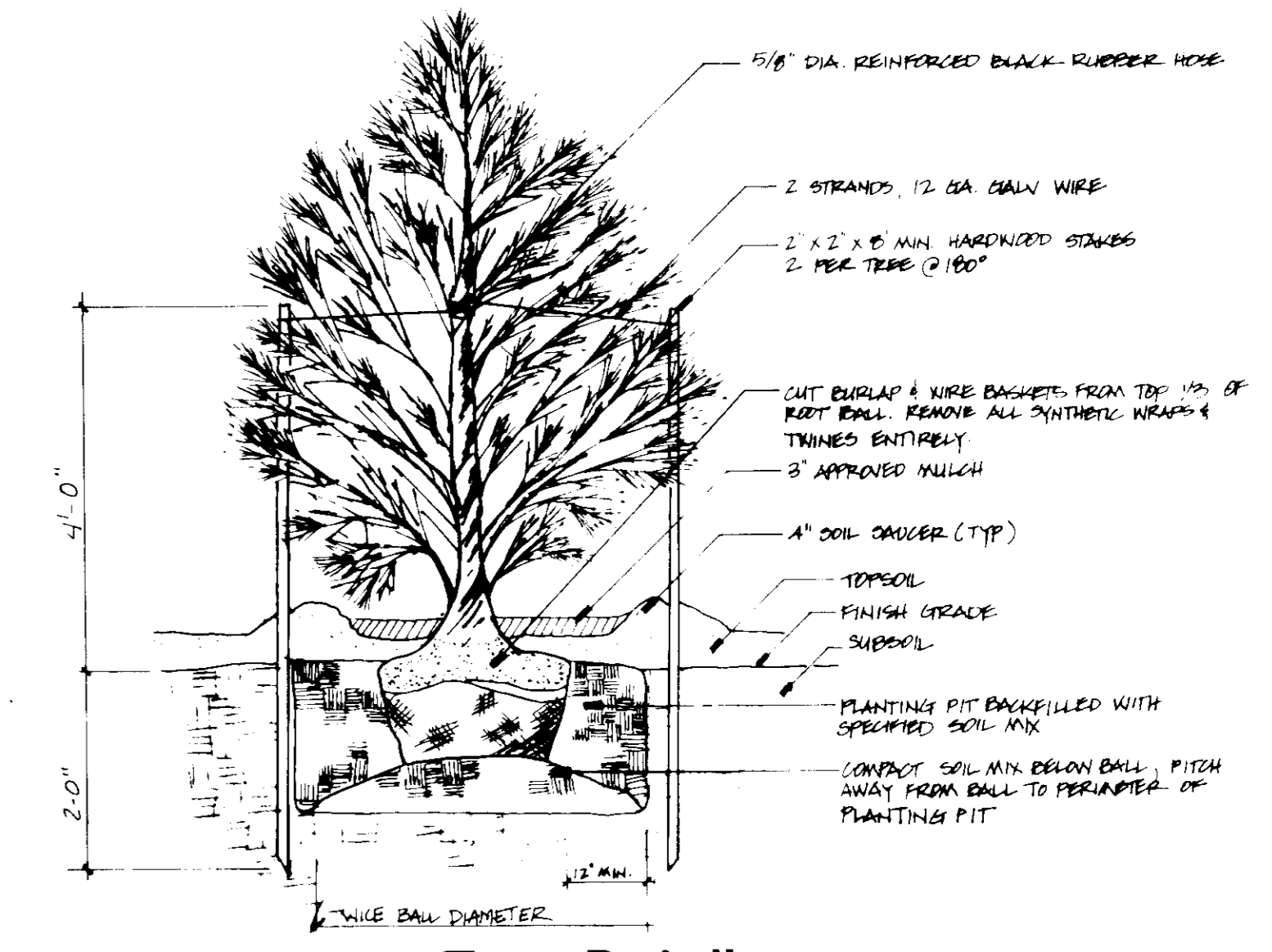
4 Tree Planting
NO SCALE



5 Shrub Planting
NO SCALE



6 Groundcover Planting
NO SCALE



7 Evergreen Tree Detail
NO SCALE

HOWARD COUNTY DEPARTMENT OF PUBLIC WORKS
APPROVED for Public Water, Public Sewerage, Storm Drainage Systems & Public Roads

James J. Lewis
Director 7/11/89 Date

William E. Kelly
Chief, Bureau of Engineering 7-11-89 Date

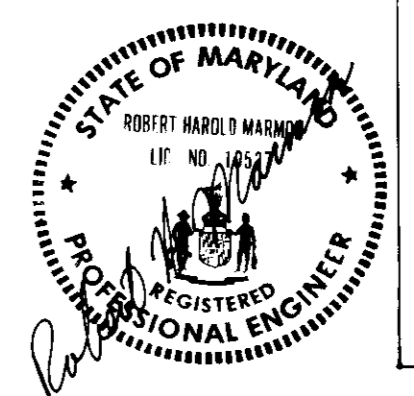
HOWARD COUNTY HEALTH DEPARTMENT
APPROVED for Public Water and Public Sewerage Systems

Joseph M. Boyd
County Health Officer 7-14-89 Date

HOWARD COUNTY DEPT. OF PLANNING AND ZONING
APPROVED

W.R.S.
Planning Director 7-20-89 Date

Charles J. Z. Campbell
Chief, Division of Community Planning & Land Development 7/27/89 Date



5-15-89

DORSEY BUSINESS CENTER LIMITED PARTNERSHIP
6797 DORSEY ROAD
BALTIMORE, MD. 21227
PH. 796-3223

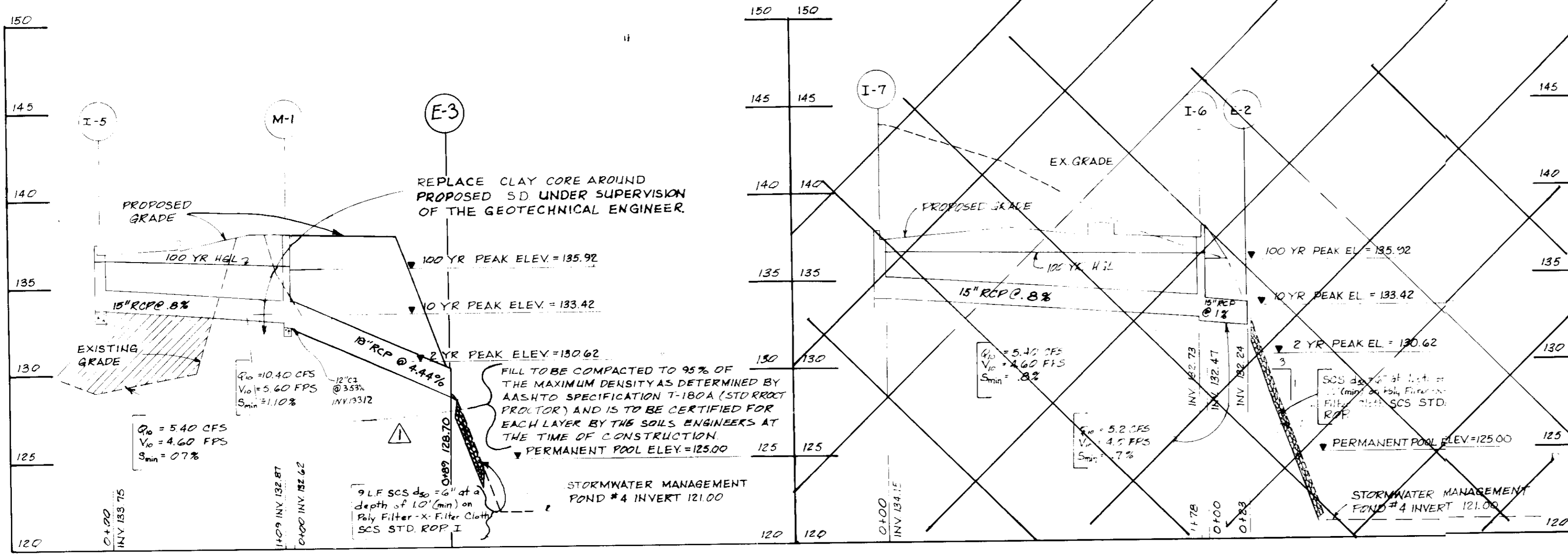
REVISION	DATE	BY



GREENHORNE & O'MARA, INC.
113 WEST ROAD, SUITE 208, BALTIMORE, MARYLAND 21204
(301) 296-4100

SITE DETAILS PLANTING DETAILS
DORSEY BUSINESS CENTER
PLAT 69-15-8715 TAX MAP 43 ZONE M-2 ZONING MAP 43
PARCEL D SECTION I
HOWARD CO., MARYLAND

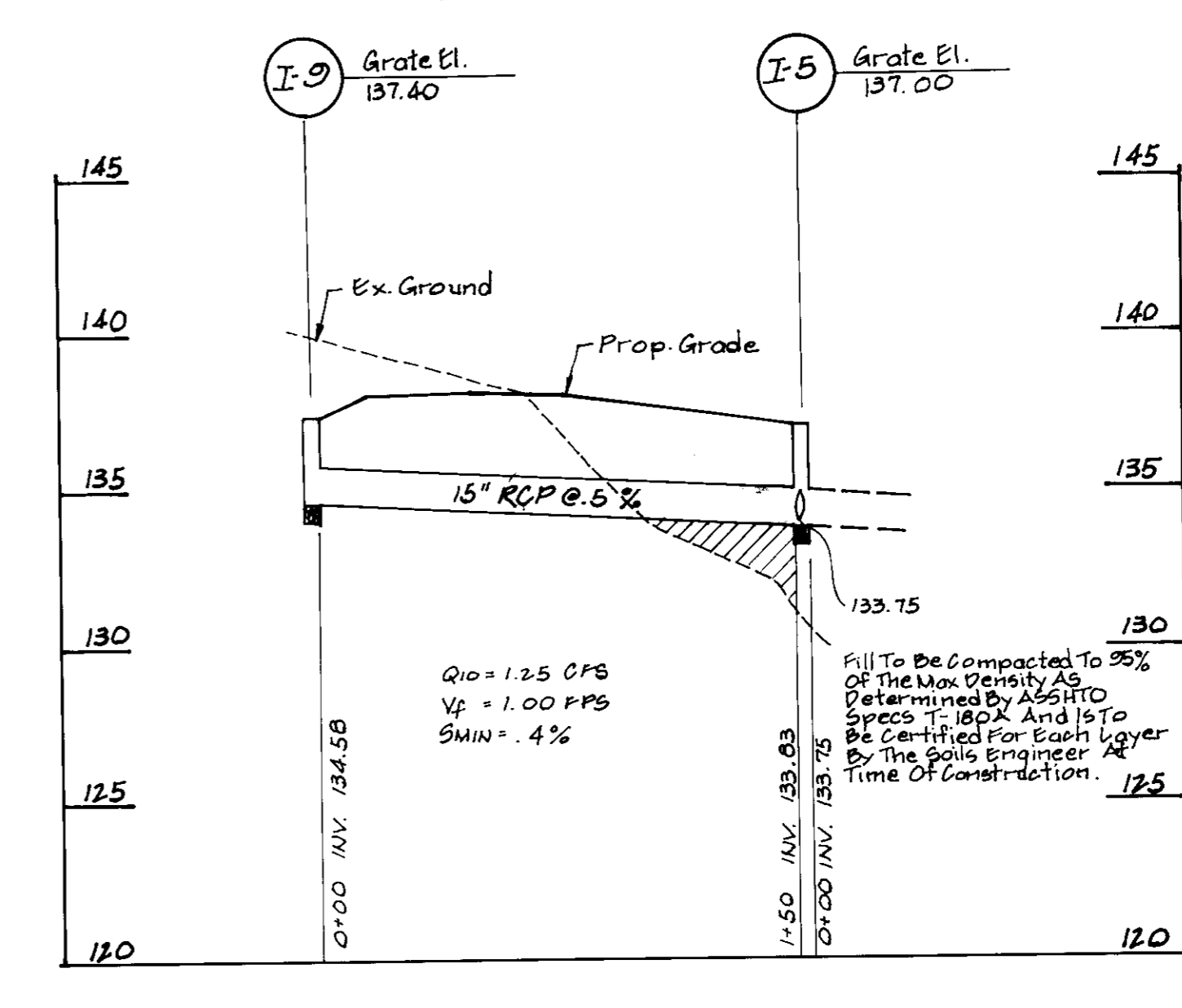
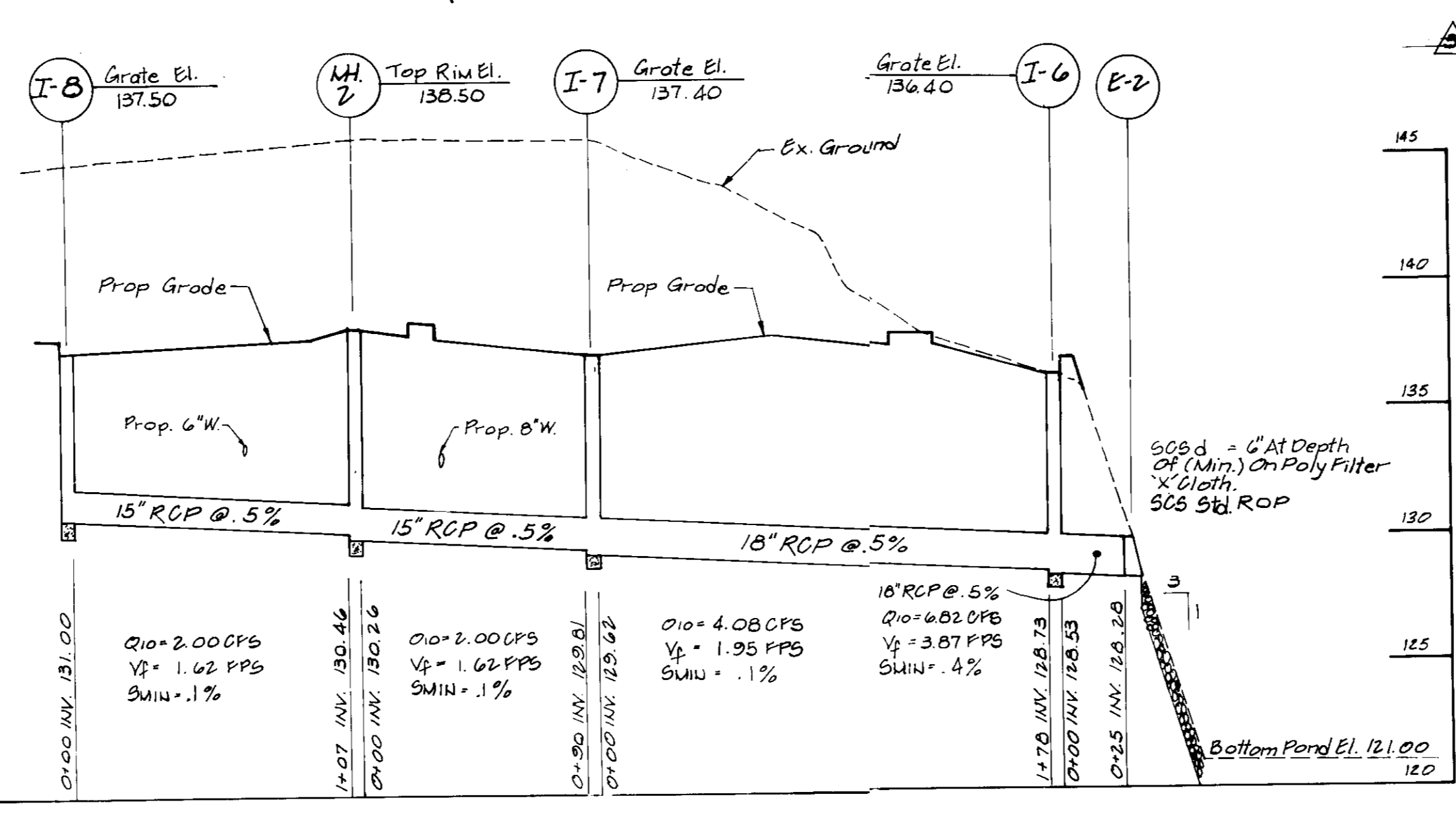
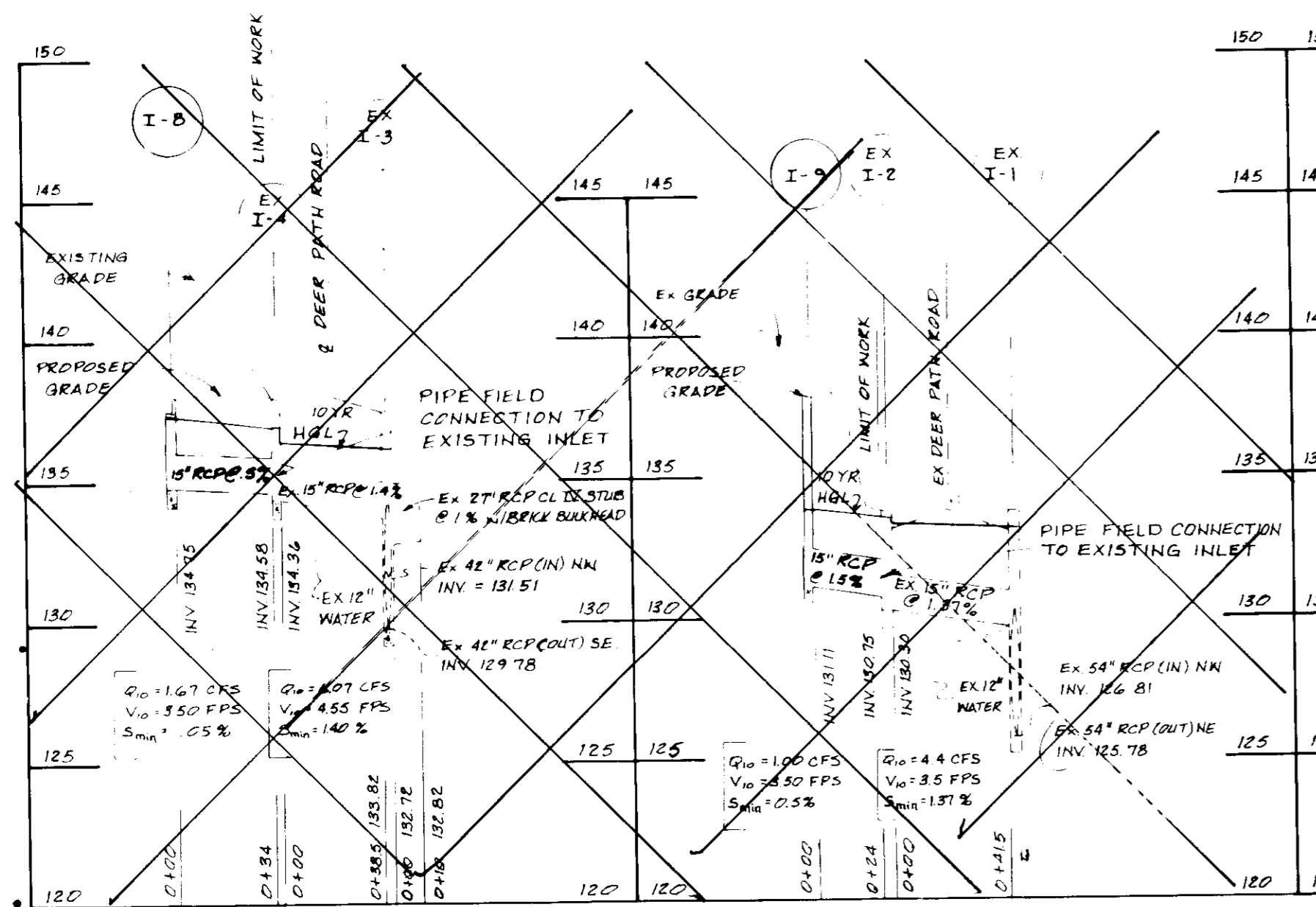
SVB	AS INDICATED
SVB	4
DLM/RHM	8



SIZE	TYPE	LENGTH
15"	RCP CL IV	368 LF
18"	RCP CL IV	108 LF
12"	C.I.	96 LF

STRUCTURE SCHEDULE						
NO.	STRUCTURE	INVERT		TOP ELEVATION		LOCATION
		IN	OUT	UPPER	LOWER	
I-5	DOUBLE "S" COMB INLET DEPRESSED		133.75	137.00	137.00	E-BOX 503.50' RT & STATION 2+81 DOUGLAS LEGUM DRIVE SD - 4.34
I-6	DOUBLE "S" COMB INLET DEPRESSED	132.73	132.47	136.40	136.40	E-BOX 237.5' RT & STATION 2+67.5 DOUGLAS LEGUM DRIVE SD - 4.34
I-7	DOUBLE "S" COMB INLET DEPRESSED		134.15	137.40	137.40	E-BOX 177.00' RT & STATION 4+44.5 DOUGLAS LEGUM DRIVE SD - 4.34
I-8	SINGLE "S" COMB INLET DEPRESSED		134.75	137.50	137.50	E-BOX 362.00' RT & STATION 5+15 SD - 4.32
I-9	SINGLE "S" COMB INLET UNDEPRESSED		131.11	137.40	137.40	E-BOX 579.50' RT & STATION 4+177 DOUGLAS LEGUM DRIVE SD - 4.32
M-1	4'-0" BRICK MANHOLE	132.87	132.62	TOP OF RIME ELEV = 137.55		E-M-H 452.0' RT & STATION 2+86 DOUGLAS LEGUM DRIVE G - 5.12
M-2	4'-0" BRICK MANHOLE	130.46	130.26	TOP OF RIME ELEV = 138.50		G - 5.12
E-3	15" RCP END SECTION	128.70	128.66			END OF PIPE 425' RT & STATION 2+75 DOUGLAS LEGUM DRIVE SD - 5.61
E-2	15" RCP END SECTION	132.24	132.20			END OF PIPE 245' RT & STATION 2+43 DOUGLAS LEGUM DRIVE SD - 5.61

ELEVATION REFERS TO TOP OF GRATE

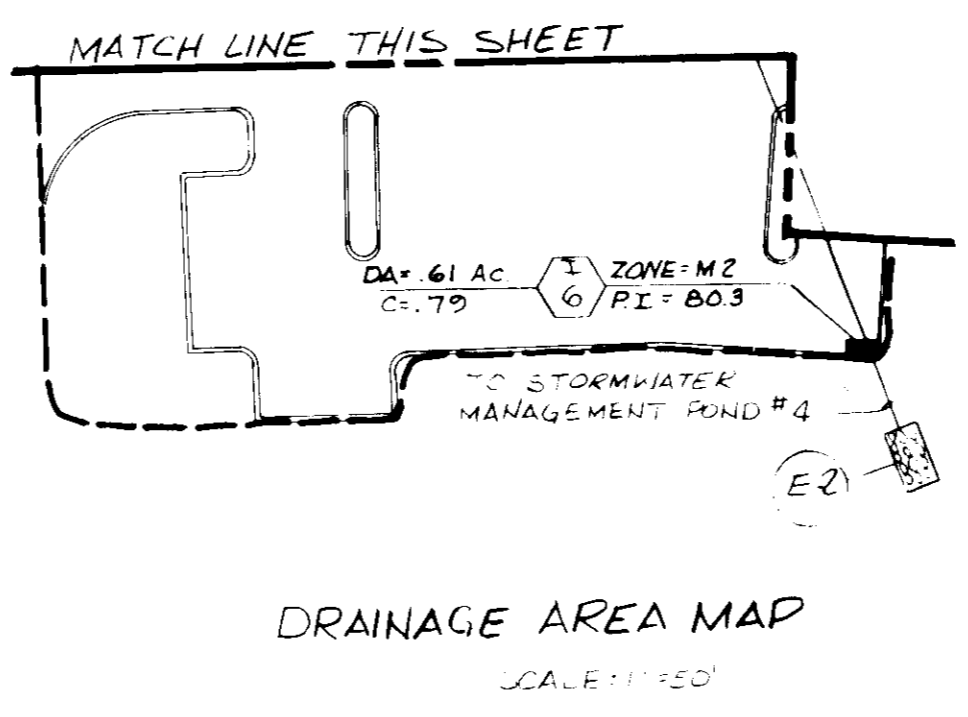
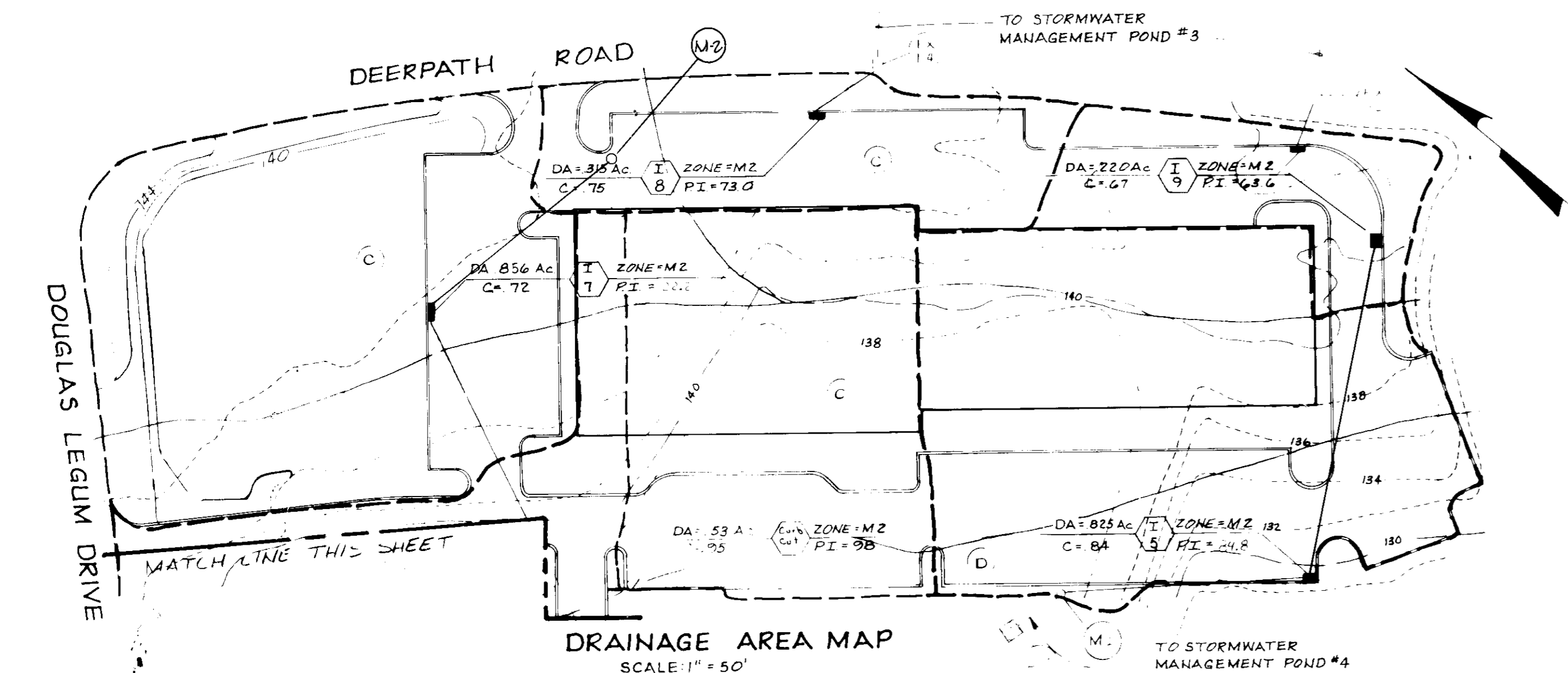


5-15-89

APPROVED: FOR PUBLIC WATER, PUBLIC SEWERAGE, STORM DRAINAGE SYSTEMS & PUBLIC ROADS
 HOWARD COUNTY DEPT. OF PUBLIC WORKS
 Director: [Signature] 7/11/89
 Chief, Bureau of Engineering: [Signature] 7-11-89

APPROVED: FOR PUBLIC WATER & PUBLIC SEWERAGE SYSTEMS
 HOWARD COUNTY HEALTH DEPARTMENT
 County Health Officer: [Signature] 7-14-89

APPROVED: HOWARD COUNTY DEPT. OF PLANNING & ZONING
 Planning Director: [Signature] 7-20-89
 Chief, Div. of Community Planning & Development: [Signature] 7/20/89



DORSEY BUSINESS CENTER LIMITED PARTNERSHIP
 6797 DORSEY ROAD
 BALTIMORE, MD. 21227
 PH. 796-3223

No.	REVISION	DATE	BY
1	REVISED PROFILE FROM M-1 TO E-3	6-12-89	GFO
2	CHANGE TOP ELEV. OF INLETS	6-12-89	GFO
3	REVISED PIPE FROM I-9 TO I-5, I-8 TO I-7	1-19-90	GFO

ENGINEERS ARCHITECTS PLANNERS SCIENTISTS SURVEYORS PHOTOGRAMMETRISTS
GREENHORNE & O'MARA, INC.
 113 WEST ROAD, SUITE 208
 BALTIMORE, MD. 21204
 (301) 298-4100

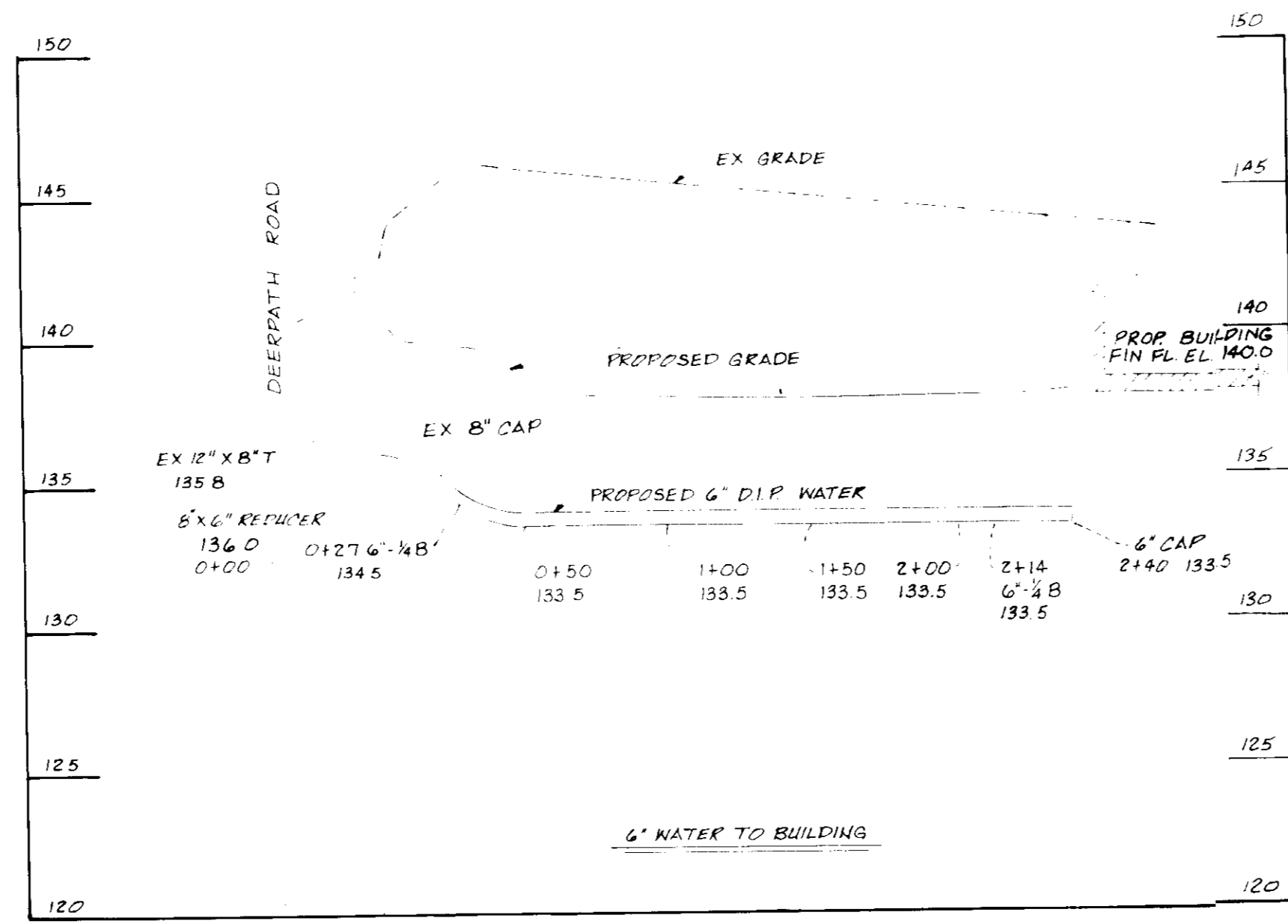
ANNAPOLIS, MD ATLANTA, GA AURORA, CO CULPEPER, VA EXPORT, PA FAIRFAX, VA
 GREENBELT, MD MANASSAS, VA ROCKVILLE, MD RALEIGH, NC TAMPA, FL

STORM DRAIN PROFILES
DORSEY BUSINESS CENTER
 PLAT 69-15-8715 TAX MAP 43 ZONE M-2 ZONING MAP 43
 1ST E.D. PARCEL D SECTION 1
 HOWARD CO., MARYLAND

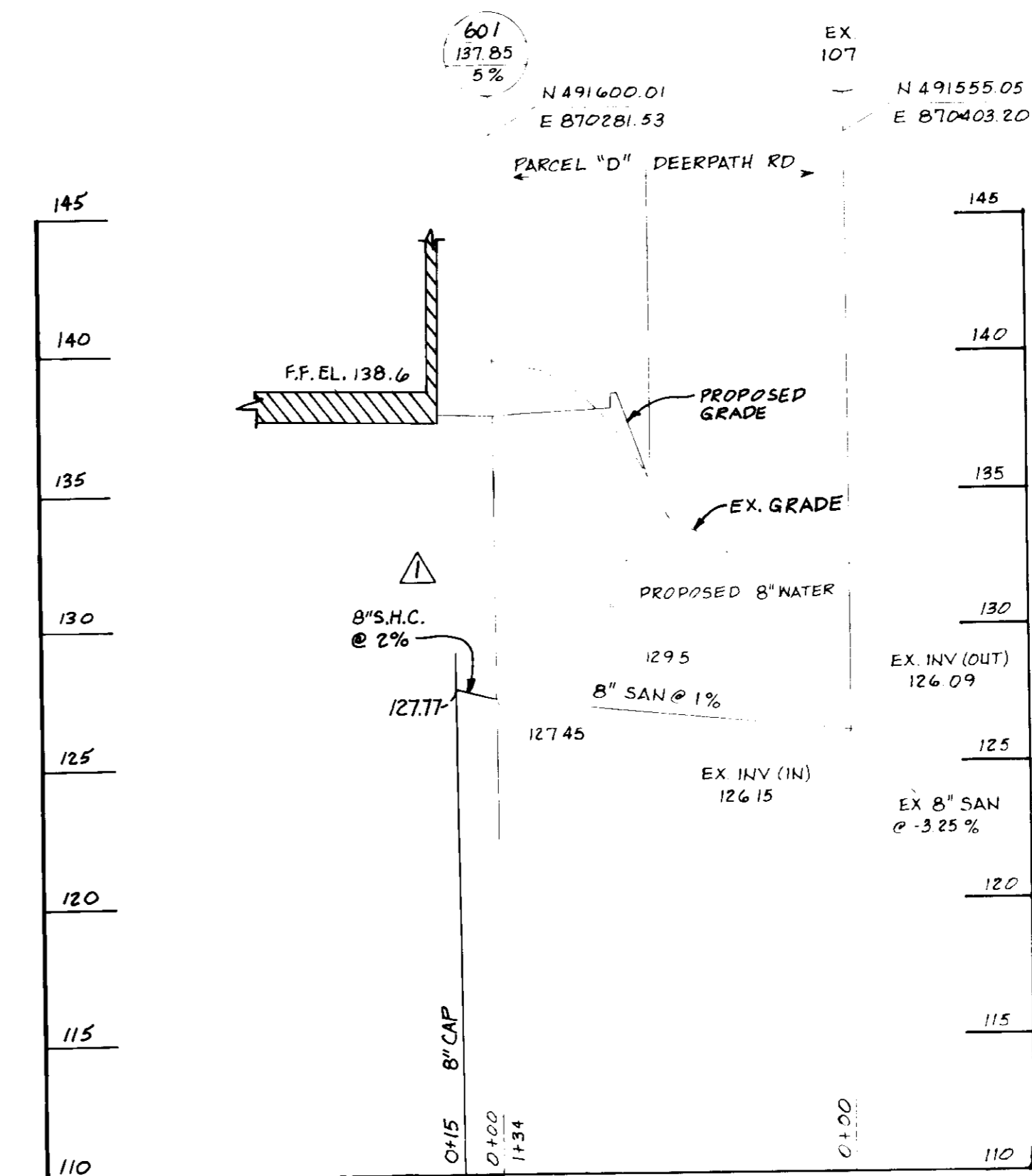
KAM DESIGN	HORIZ. SCALE	VERT. SCALE
DTW DRAWN	1" = 50'	1" = 5'
RHM CHECKED SHEET	5 OF 8	
DATE: 11/30/88	JOB NO.	FILE NO.

SDP-89-112 B-1066-V

5-15-89



WATER PROFILE
SCALE: HORIZ: 1"=50'
VERT: 1"=5'



SANITARY PROFILE
SCALE: HORIZ: 1"=50'
VERT: 1"=5'

WATER CODE: 801
SEWER CODE: 228000

APPROVED: FOR PUBLIC WATER, PUBLIC SEWERAGE, STORM DRAINAGE SYSTEMS & PUBLIC ROADS
HOWARD COUNTY DEPT. OF PUBL. WORKS
James J. Kelly 7/16/89
DIRECTOR DATE
James J. Kelly 7-11-89
CHIEF, HEALTH OF ENGINEERING DATE

APPROVED: FOR PUBLIC WATER & PUBLIC SEWERAGE SYSTEMS
HOWARD COUNTY HEALTH DEPARTMENT
Joyce M. Boyd MSW 7-14-89
COUNTY HEALTH OFFICER DATE

APPROVED: HOWARD COUNTY DEPT. OF PLANNING & ZONING
W. J. ... 7-20-89
PLANNING DIRECTOR DATE
Charles J. ... 7/21/89
CHIEF, DIV. OF COMMUNITY PLANNING AND DEVELOPMENT DATE

SEDIMENT CONTROL

By the Developer:
I hereby certify that all development and construction will be done according to this plan and that no "kickback" or "kickdown" will be done in the construction of the project. I have a certificate of attendance for the Department of Planning & Zoning approved training program for the purpose of sediment and erosion before beginning the project.

Signature of Developer: _____

By the Engineer:
I hereby certify that this plan and specifications are in accordance with the requirements of the Department of Planning & Zoning and the Department of Public Works. I have a certificate of attendance for the Department of Planning & Zoning approved training program for the purpose of sediment and erosion before beginning the project.

Signature of Engineer: _____

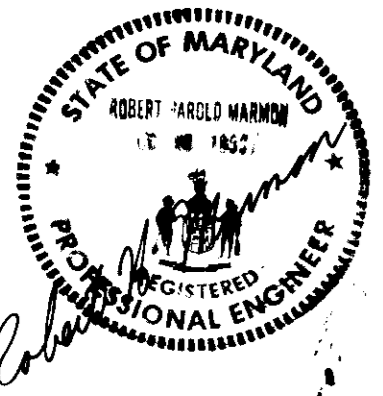
By the Planning Director:
I hereby certify that this plan and specifications are in accordance with the requirements of the Department of Planning & Zoning.

Signature of Planning Director: _____

By the Health Officer:
I hereby certify that this plan and specifications are in accordance with the requirements of the Department of Health.

Signature of Health Officer: _____

THIS SEDIMENT PLAN IS APPROVED FOR SEDIMENT CONTROL BY THE HOWARD COUNTY DEPARTMENT OF PLANNING & ZONING.



DORSEY BUSINESS CENTER LIMITED PARTNERSHIP
6797 DORSEY ROAD
BALTIMORE, MD. 21227
PH. 796-3223

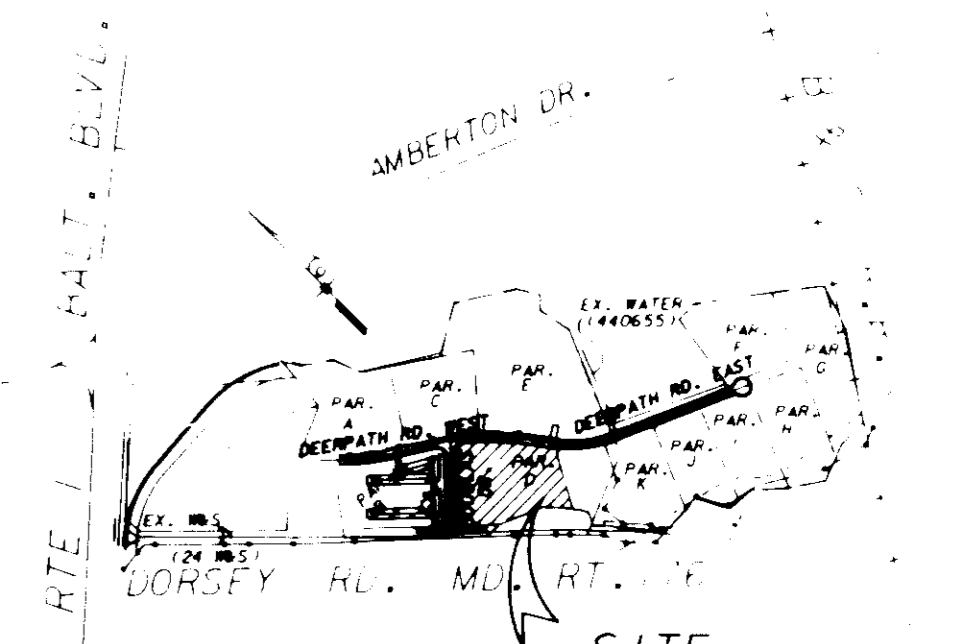
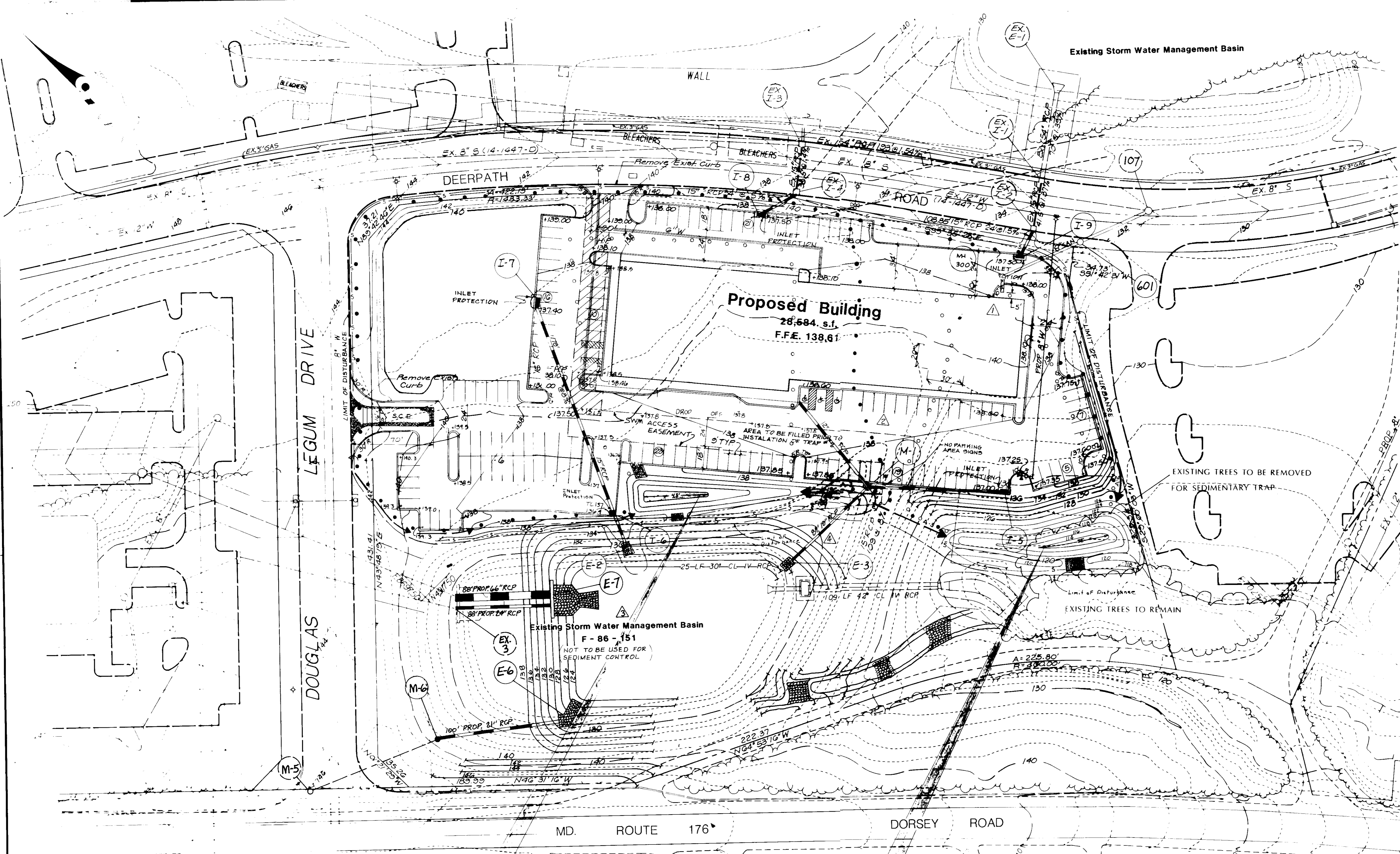
REVISION: REVISED S.H.C.
DATE: 6-12-89
BY: Gfo

ARCHITECTS PLANNERS SCIENTISTS SURVEYORS PHOTOGRAMMETRISTS
WAINWORTH & O'MARA, INC.
118 WEST ROAD, SUITE 208
BILTMORE, MD. 21204
(301) 286-4100

PRIVATE SANITARY & WATER PROFILES
DORSEY BUSINESS CENTER
PLAT 6945-8715 TAX MAP 43 ZONE M-2 ZONING MAP 43
PARCEL D SECTION 1
1ST E.D. HOWARD CO., MARYLAND

KAM DESIGN S.A.S. VERT: 1"=5'
DTW DRAIN 6 8
RHM DATE: 11/30/88
DATE: 11/30/88

SDP-89-112
8-1066-V



VICINITY MAP
 APPROVED: FOR PUBLIC WATER & PUBLIC SEWERAGE SYSTEMS
 HOWARD COUNTY HEALTH DEPARTMENT

Joseph M. Boyd
 COUNTY HEALTH OFFICER 7-14-89
 DATE

APPROVED: FOR PUBLIC WATER, PUBLIC SEWERAGE, STORM DRAINAGE SYSTEMS & PUBLIC ROADS
 HOWARD CO. DEPT. OF PUBLIC WORKS

James J. ...
 DIRECTOR 7-11-89
 CHIEF, BUREAU OF ENGINEERING DATE

APPROVED: HOWARD COUNTY DEPT. OF PLANNING & ZONING

...
 PLANNING DIRECTOR 7-20-89
 CHIEF, DIV. OF COMMUNITY PLANNING & DEVELOPMENT DATE

SEDIMENT CONTROL
 BY THE DEVELOPER:
 I/WE CERTIFY THAT ALL DEVELOPMENT AND CONSTRUCTION WILL BE DONE ACCORDING TO THIS PLAN, AND THAT MANY RESPONSIBLE PERSONNEL INVOLVED IN THE CONSTRUCTION PROJECT WILL HAVE A CERTIFICATE OF ATTENDANCE AT A DEPARTMENT OF NATURAL RESOURCES APPROVED TRAINING PROGRAM FOR THE CONTROL OF SEDIMENT AND EROSION BEFORE BEGINNING THE PROJECT.
 I ALSO AUTHORIZE THE PERIODIC ON SITE INSPECTION BY THE HOWARD SOIL CONSERVATION DISTRICT.
Steve Legum
 SIGNATURE OF DEVELOPER 6/2/89
 DATE

BY THE ENGINEER:
 I CERTIFY THAT THIS PLAN FOR EROSION AND SEDIMENT CONTROL REPRESENTS A PRACTICAL AND WORKABLE PLAN BASED ON MY PERSONAL KNOWLEDGE OF THE SITE AND CONDITIONS AND THAT IT WAS PREPARED IN ACCORDANCE WITH THE REQUIREMENTS OF THE HOWARD COUNTY DEPARTMENT OF PUBLIC WORKS.
Robert H. Manna
 SIGNATURE OF ENGINEER 6/3/89
 DATE

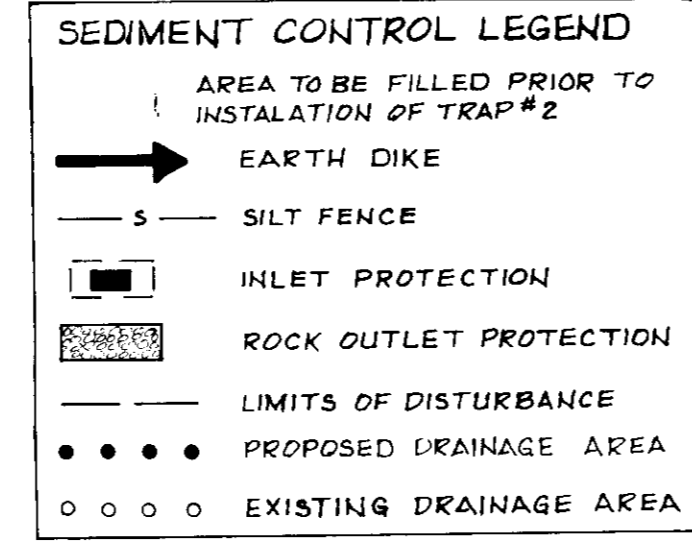
ALL MEASUREMENTS TO CORNERS
James M. Helms
 DATE 7/2/89

Stephen ...
 DATE 7/7/89

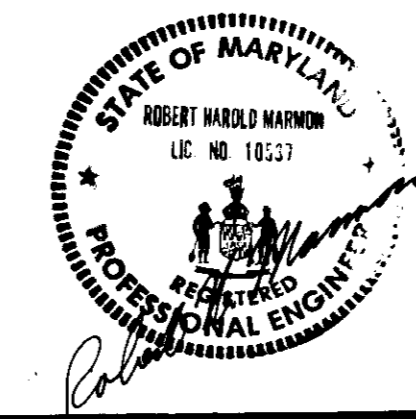
5-15-89

- SEQUENCE OF CONSTRUCTION
- OBTAIN GRADING PERMIT.
 - NOTIFY THE HOWARD COUNTY DEPARTMENT OF PERMITS AND LICENSES. INSPECTOR, 48 HOURS BEFORE BEGINNING WORK.
 - CONSTRUCT STABILIZED CONSTRUCTION ENTRANCE.
 - CLEAR AND GRUB SITE FOR SEDIMENT AND EROSION CONTROL MEASURES ONLY.
 - FILL THE AREA HATCHED AS SHOWN BEFORE THE INSTALLATION OF SEDIMENT TRAP #2, TO ALLOW POSITIVE DRAINAGE TO THE TRAP.
 - INSTALL ALL SEDIMENT CONTROL MEASURES.
 - BEGIN GRADING MAINTAINING POSITIVE DRAINAGE TO THE SEDIMENT TRAPS #1 AND #2.
 - CONSTRUCT BUILDING FOUNDATION.
 - INSTALL ALL UTILITIES AND PROVIDE INLET PROTECTION AS INDICATED.
 - FINE GRADE SITE.
 - INSTALL SUBBASE IN PAVING AREAS AND STABILIZE THE REMAINDER OF THE SITE, EXCEPT FOR EXISTING SEDIMENT TRAP #1 AND #2.
 - AFTER THE TOTAL SITE IS STABILIZED, INCLUDING SEDIMENT TRAP, AND WITH PERMISSION OF THE SEDIMENT CONTROL INSPECTOR, REMOVE INLET PROTECTION, AND SEDIMENT CONTROL DEVICES.

- 1 TRAP NO 2
 2 STONE OUTLET
 3 2.47 AC DRAINAGE AREA
 4 STORAGE REQUIRED = 4,845 F³
 5 STORAGE PROVIDED = 4,700 F³
 6 OUTLET LENGTH = 10 FT
 7 CLEANOUT ELEVATION = 152.00 FT
 8 EMBANKMENT HEIGHT = 1 FT
 9 BOTTOM DIMENSIONS = 54 FT X 8 FT
 10 CREST HEIGHT BLEV = 135.0 FT



- 1 TRAP NO 1
 2 STONE OUTLET
 3 340 AC DRAINAGE AREA
 4 STORAGE REQUIRED = 6184 F³
 5 STORAGE PROVIDED = 6448 F³
 6 OUTLET LENGTH = 15 FT
 7 CLEANOUT ELEVATION = 116.5 FT
 8 EMBANKMENT HEIGHT = 1 FT
 9 BOTTOM DIMENSIONS = 55 FT X 10 FT
 10 CREST HEIGHT = 119 FT



ADDRESS CHART		SUBDIVISION NAME		SECT./AREA	LOT/PARCEL
LOT NUMBER	STREET ADDRESS	DORSEY BUSINESS CENTER		SEC 1	D
PARCEL D	6801 DOUGLAS LEGUM DRIVE	PLAT NO. OR L.P./BLOCK NO./ZONE	TAX/ZONE MAP/ELEC. DIST./CENSUS TR.	6X M-2	6012
		WATER CODE	SEWER CODE	BO1	228000

DORSEY BUSINESS CENTER LIMITED PARTNERSHIP
 6797 DORSEY ROAD
 BALTIMORE, MD. 21227
 PH. 796-3223

No	REVISION	DATE	BY
1	REVISED S.H.C.	6/12/89	GFO
2	REVISED PARKING	6/12/89	GFO
3	REVISED VOLUME OF EX. S.W.M. POND #4	6/12/89	GFO
4	REVISED PIPE FROM M-1 TO E-3	6/12/89	GFO

GREENHORNE & O'MARA, INC.
 113 WEST ROAD, SUITE 208, BALTIMORE, MARYLAND 21204
 (301) 296-4100

ANNAPOLIS MD • ATLANTA GA • AURORA CO • CULPEPER VA • EXPORT PA • FAIRFAX VA
 GREENBELT MD • MANASSAS VA • MONROE MI • RALEIGH NC • ROCKVILLE MD • TAMPA FL

SEDIMENT CONTROL
DORSEY BUSINESS CENTER
 PLAT 6915-8715 TAX MAP 43 ZONE M-2 ZONING MAP 43
 PARCEL D SECTION 1
 HOWARD CO., MARYLAND

KAM DESIGN	SCALE	1" = 40'
DTW DRAWN	7 OF 8	
RHM CHECKED	SHEET	
DATE	JOB No	FILE No
11/30/88		

SDP-89-112

