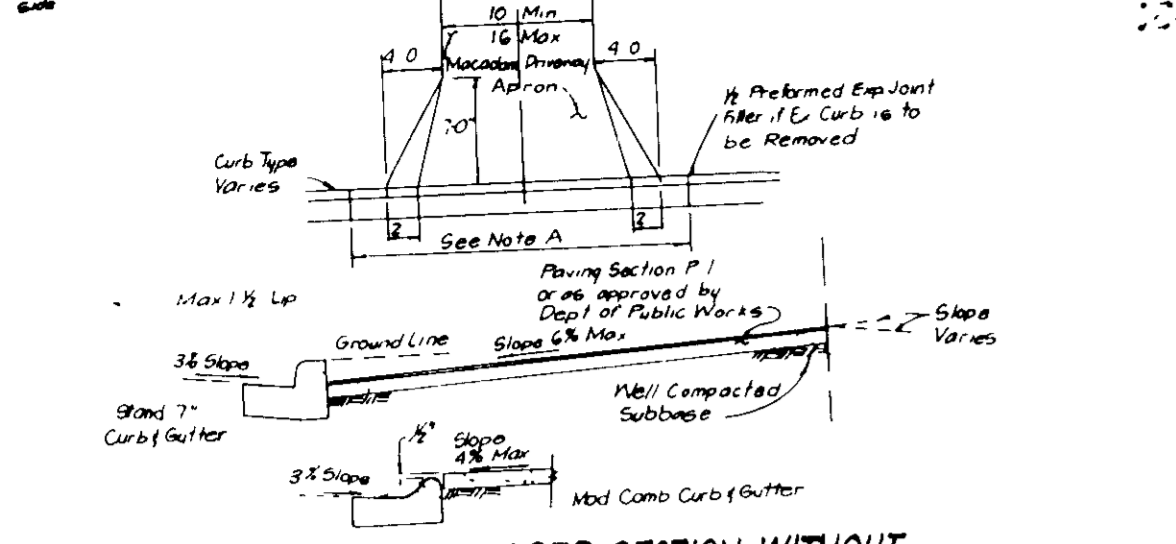
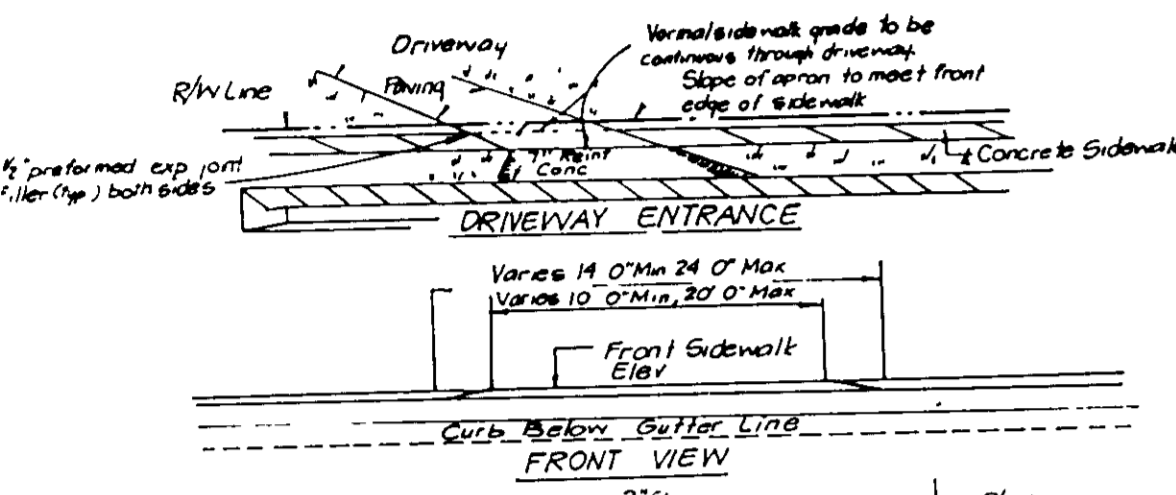


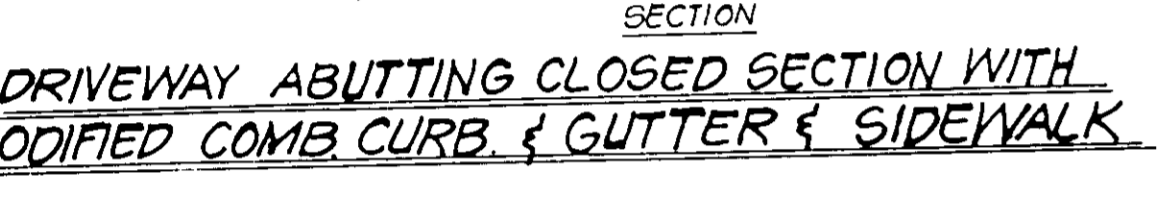
NOTE A Where curb/gutter exists, remove (reconstruct curb/gutter to meet joint on other side)



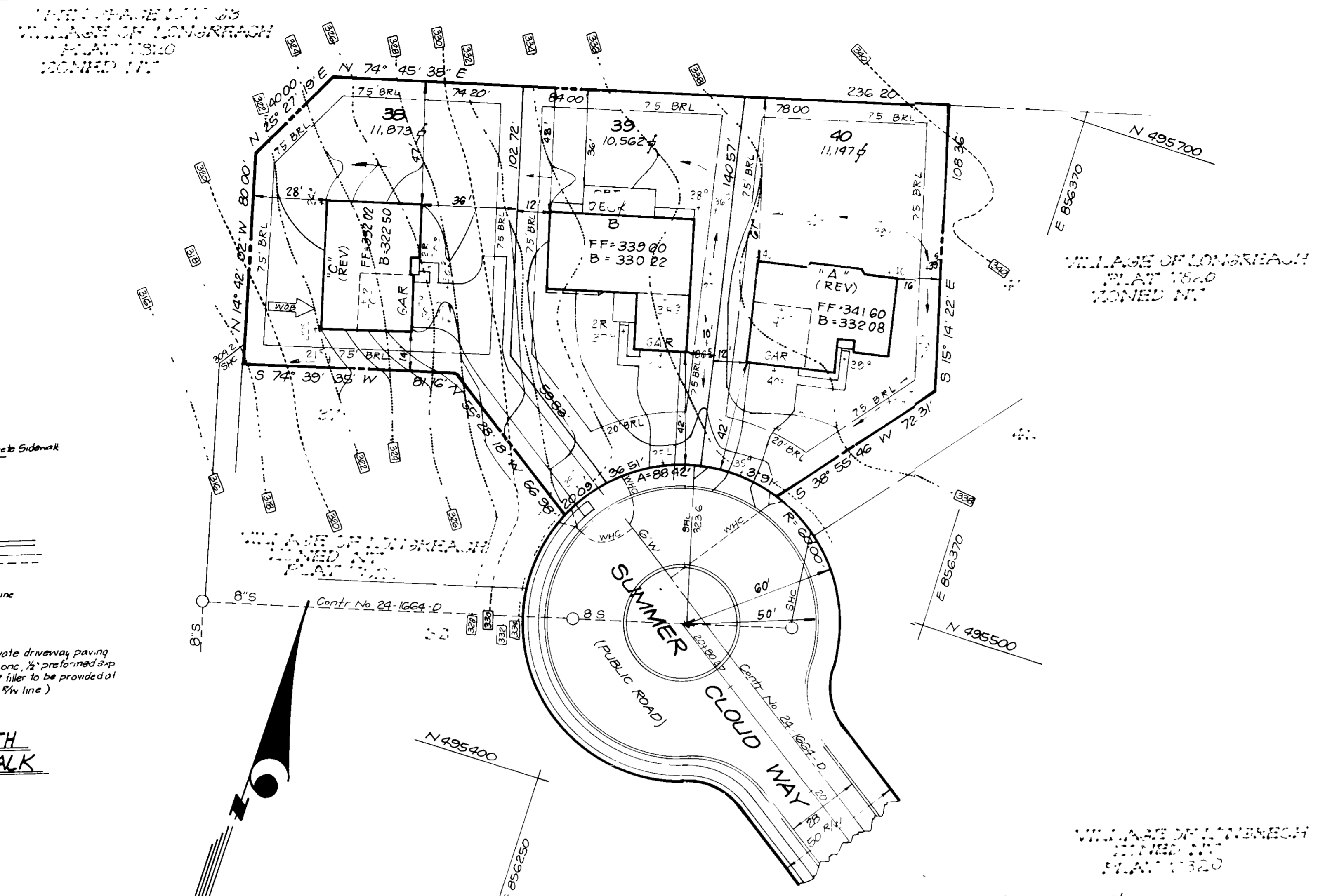
DRIVEWAY ABUTTING CLOSED SECTION WITHOUT CONCRETE SIDEWALK



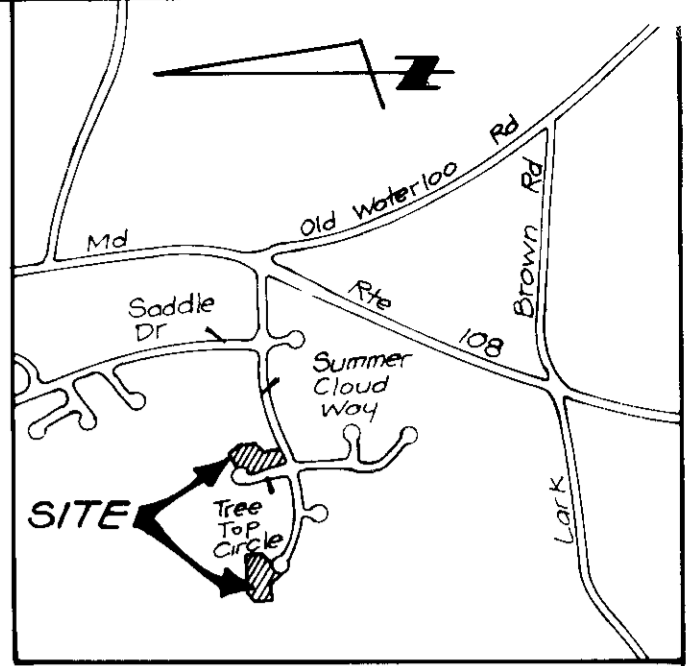
DRIVEWAY ABUTTING CLOSED SECTION WITH MODIFIED COMB CURB & GUTTER & SIDEWALK



DRIVEWAY ABUTTING CLOSED SECTION WITH STR 7" COMB CURB & GUTTER & SIDEWALK SET BACK FROM CURB

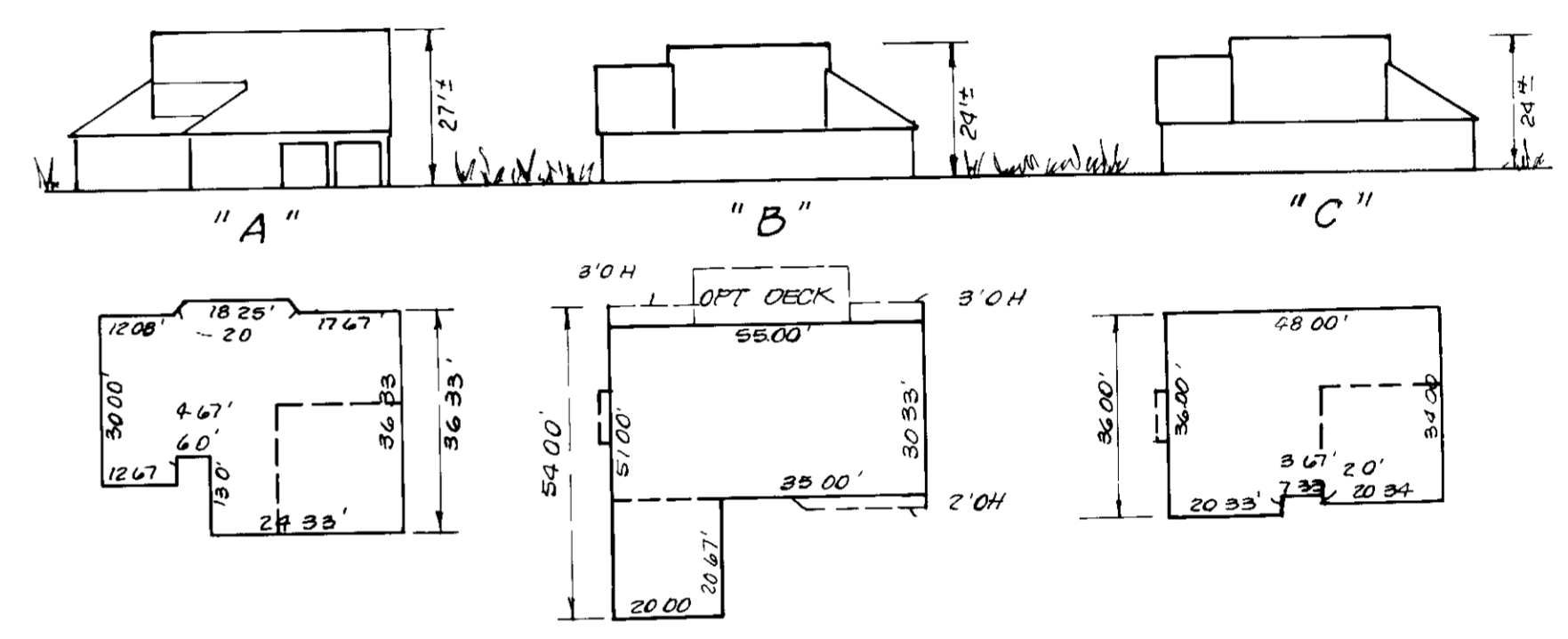
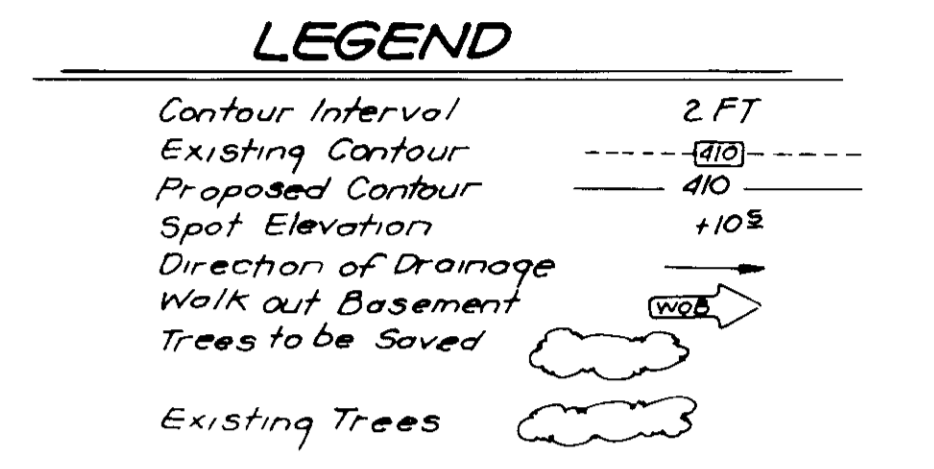


- GENERAL NOTES**
- 1 Subject property zoned NT per Comprehensive Zoning Plan dated 8-2-85
  - 2 The coordinates shown herein are based on the Maryland State Grid System and derived from the following Howard County Control Stations: 2544002 and 2544008
  - 3 All roads are public and existing
  - 4 Any damage to county owned right-of-ways to be corrected at the Developer's expense
  - 5 Total area included 1.0390 Acres
  - 6 Total number of lots 8
  - 7 Reference Final Development Plan, Section 4, Phase 137, Part 1
  - 8 Maximum lot coverage is 30%
  - 9 The contractor or developer shall contact the Construction Inspection Survey Division, 24 hours in advance of commencement of work at 792-2630
  - 10 Existing topography taken from already approved plans prepared by Fisher, Collins and Carter, Inc F-88-76
  - 11 Stormwater Management provided see plans for the Village of Longreach F-88-171



VICINITY MAP  
Scale 1" = 2000'

LOT NO	STREET ADDRESS
38	6499 SUMMER CLOUD WAY
39	6498 " "
40	6496 " "
55	6416 TREE TOP CIRCLE
56	6412 " "
57	6408 " "
58	6404 " "
59	6400 " "



TYPICAL HOUSES  
SCALE 1" = 30'

7-7-88  
LKS

APPROVED FOR PUBLIC WATER AND PUBLIC SEWERAGE SYSTEMS  
HOWARD COUNTY HEALTH DEPARTMENT  
DATE: 8-30-88

APPROVED HOWARD COUNTY OFFICE OF PLANNING & ZONING  
DATE: 9-3-88

APPROVED FOR PUBLIC WATER AND PUBLIC SEWERAGE, STORM DRAINAGE SYSTEMS AND PUBLIC ROADS  
HOWARD COUNTY DEPARTMENT OF PUBLIC WORKS  
DATE: 8-24-88



Ref. File No. 887-89; P87-60; F88-76

Subdivision Name	COLUMBIA VILLAGE OF LONGREACH	Section/Area	4	Lots	38-40, 55-59
Plot No.	7820	Block No.	13	Zone	RT-2
Water Code	E 08	Sewer Code	3490000		

**CLARK • FINEFROCK & SACKETT, INC**  
ENGINEERS • PLANNERS • SURVEYORS  
7135 MINSTREL WAY • COLUMBIA MD 21045 • (301) 381-7500 - BALTO • (301) 621-8100 - WASH

DESIGNED: L.J.G. DATE: 8-1-88  
DRAWN: BAL. DATE: 8-1-88  
CHECKED: J.M.E. DATE: 8-1-88  
DATE: June 1988

**SITE DEVELOPMENT PLAN**  
LOT 38-40 and 55-59  
**COLUMBIA VILLAGE OF LONGREACH**  
SECTION 4  
6TH ELECTION DISTRICT  
HOWARD COUNTY, MARYLAND

FOR WOODMAN HOMES  
Wild Lake Village Green Suite 300  
Columbia, Maryland 21044

SCALE: 1" = 30'  
DRAWING: 1 of 2  
JOB NO: 88-076  
FILE NO: 88-076X

S.D.P. 88-240

1) The site shall be stabilized within the period of 30 days after the completion of the construction of the buildings and parking areas. The stabilization shall be in accordance with the specifications for stabilization of disturbed areas.

2) The stabilization shall be in accordance with the specifications for stabilization of disturbed areas.

3) The stabilization shall be in accordance with the specifications for stabilization of disturbed areas.

4) The stabilization shall be in accordance with the specifications for stabilization of disturbed areas.

5) The stabilization shall be in accordance with the specifications for stabilization of disturbed areas.

6) The stabilization shall be in accordance with the specifications for stabilization of disturbed areas.

7) The stabilization shall be in accordance with the specifications for stabilization of disturbed areas.

8) The stabilization shall be in accordance with the specifications for stabilization of disturbed areas.

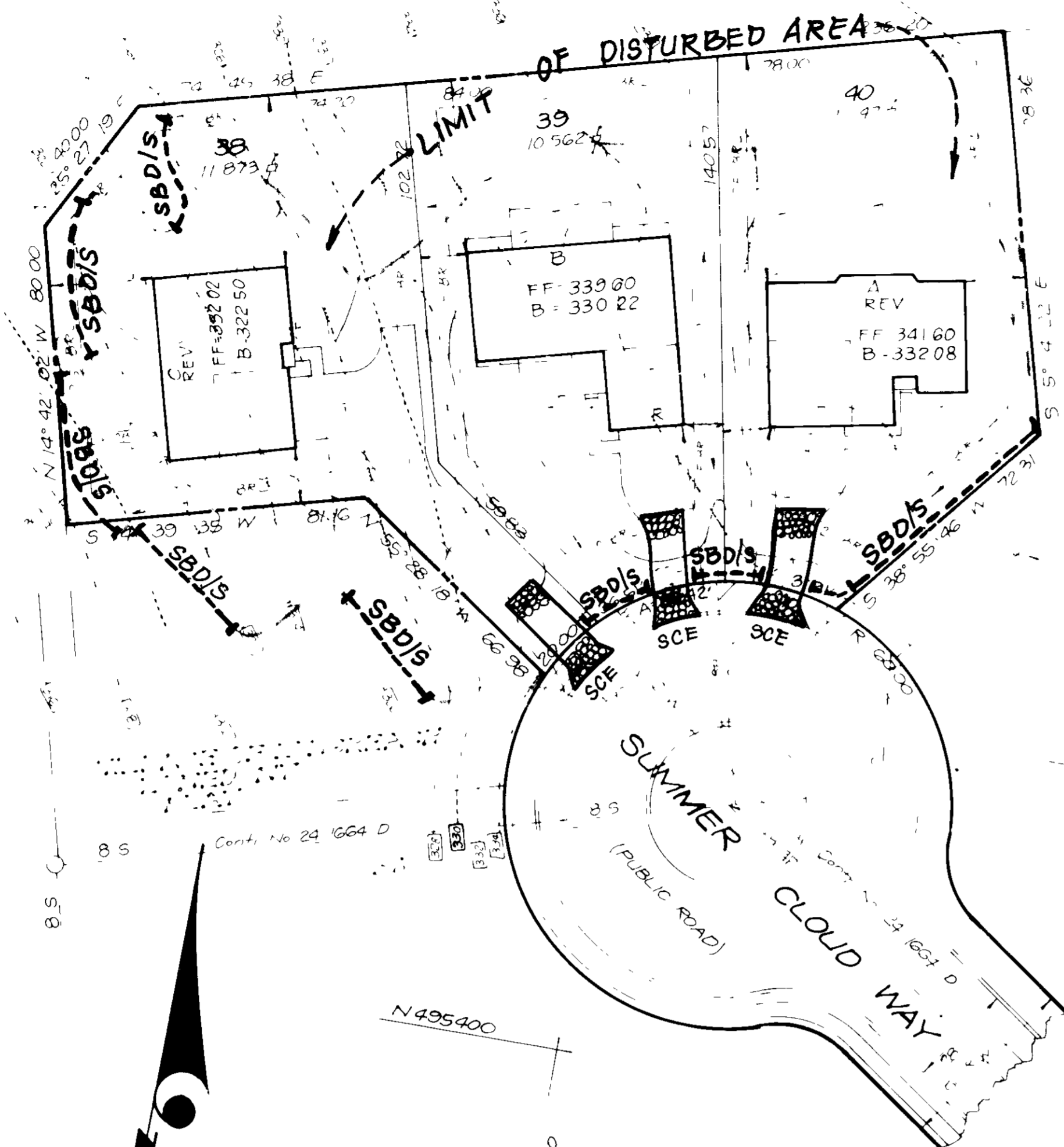
9) The stabilization shall be in accordance with the specifications for stabilization of disturbed areas.

10) The stabilization shall be in accordance with the specifications for stabilization of disturbed areas.

11) The stabilization shall be in accordance with the specifications for stabilization of disturbed areas.

12) The stabilization shall be in accordance with the specifications for stabilization of disturbed areas.

13) The stabilization shall be in accordance with the specifications for stabilization of disturbed areas.



1) The site shall be stabilized within the period of 30 days after the completion of the construction of the buildings and parking areas. The stabilization shall be in accordance with the specifications for stabilization of disturbed areas.

2) The stabilization shall be in accordance with the specifications for stabilization of disturbed areas.

3) The stabilization shall be in accordance with the specifications for stabilization of disturbed areas.

4) The stabilization shall be in accordance with the specifications for stabilization of disturbed areas.

5) The stabilization shall be in accordance with the specifications for stabilization of disturbed areas.

6) The stabilization shall be in accordance with the specifications for stabilization of disturbed areas.

7) The stabilization shall be in accordance with the specifications for stabilization of disturbed areas.

8) The stabilization shall be in accordance with the specifications for stabilization of disturbed areas.

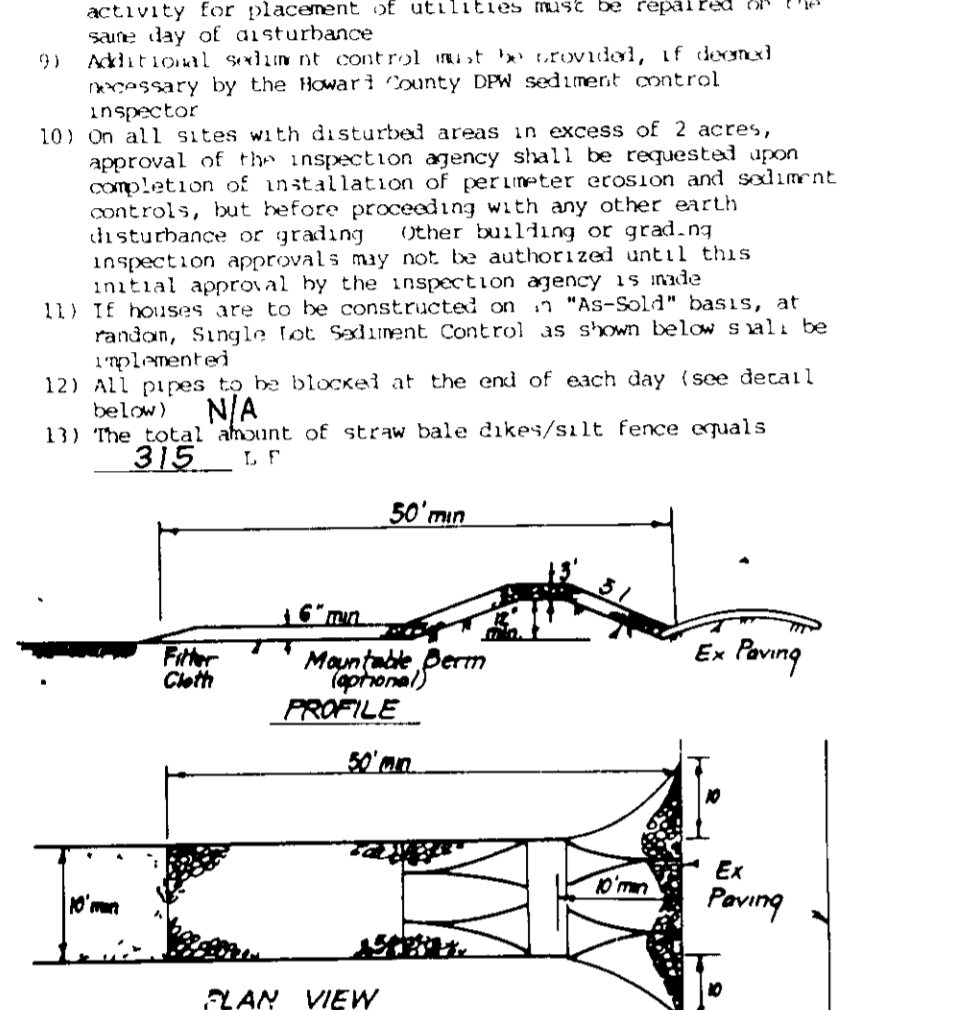
9) The stabilization shall be in accordance with the specifications for stabilization of disturbed areas.

10) The stabilization shall be in accordance with the specifications for stabilization of disturbed areas.

11) The stabilization shall be in accordance with the specifications for stabilization of disturbed areas.

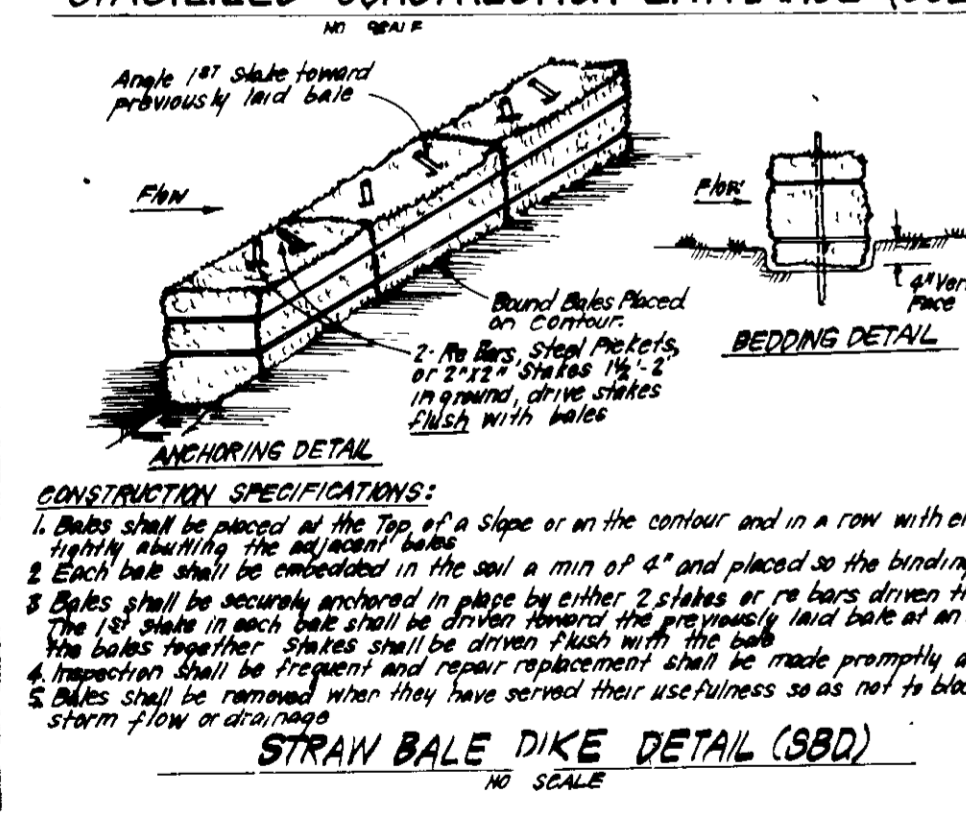
12) The stabilization shall be in accordance with the specifications for stabilization of disturbed areas.

13) The stabilization shall be in accordance with the specifications for stabilization of disturbed areas.



**CONSTRUCTION SPECIFICATIONS:**

- Stone size - 1/2" to 1 1/2" stone or equivalent or recycled concrete equivalent
- Length - As required, but not less than 50 feet (except on a simple residence lot where a 30 foot minimum length would apply)
- Thickness - Not less than six (6) inches
- Width - Ten (10) foot minimum, but not less than the full width at points where ingress or egress occurs
- Filter Cloths - Will be placed over the entire area prior to placing of stone. Filter will not be required on a simple family residence lot
- Surface Water - All surface water flowing on or over the construction entrance shall be captured, filtered and discharged to the storm sewer. A portable berm with 5' slope will be permitted
- Maintenance - The entrance shall be maintained in a condition which will prevent tracking of sediment onto public right of way. This may require periodic top dressing with additional stone as conditions demand and repair and/or cleanout of any measure used to trap sediment. All sediment applied, dropped, washed or tracked onto public right of way must be removed immediately
- Warning - Warnings shall be placed to remove sediment prior to entrance onto public right of way. When necessary to be repaired, it shall be done on an area stabilized with stone and which drains into an approved sediment trapping device
- Periodic inspection and needed maintenance shall be provided after each rain

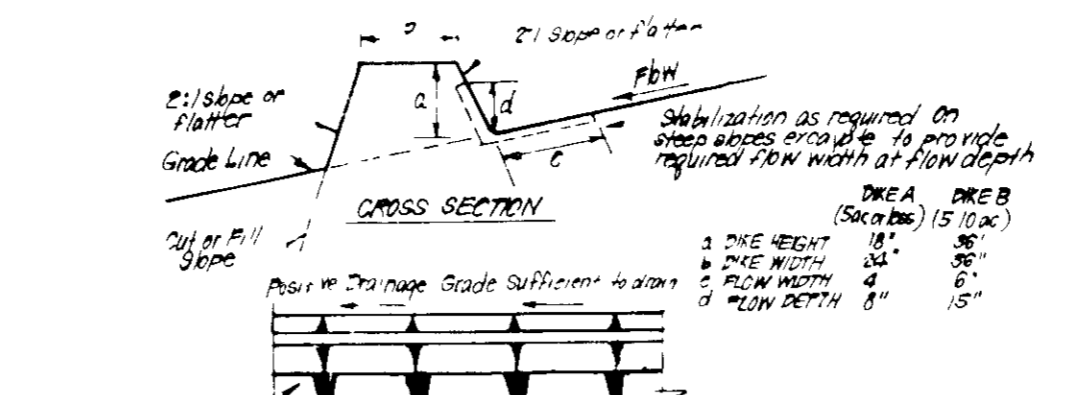
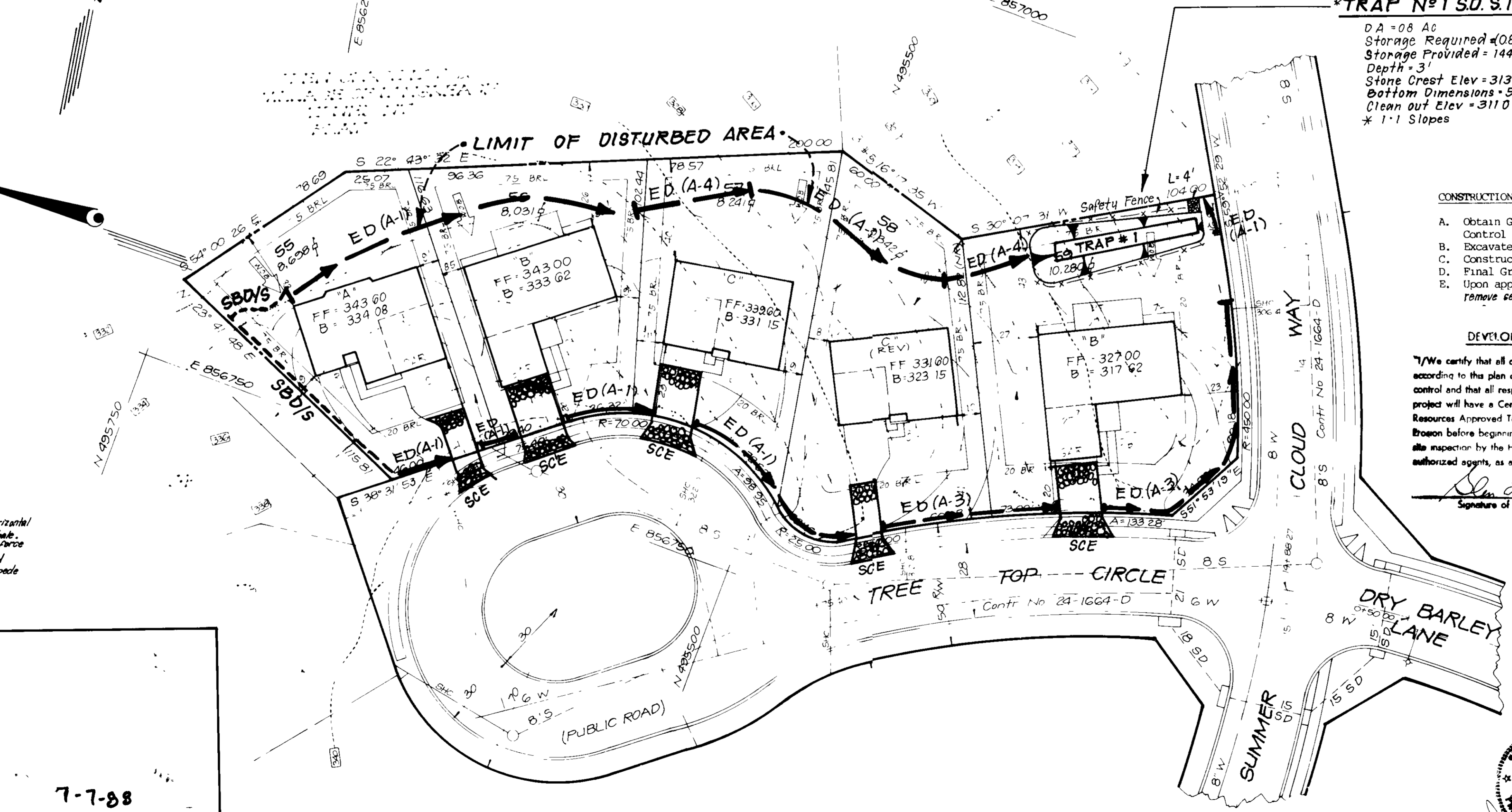


**APPROVED FOR PUBLIC WATER AND PUBLIC SEWERAGE SYSTEMS**  
 HOWARD COUNTY HEALTH DEPARTMENT  
 8-30-88  
 DATE

**APPROVED HOWARD COUNTY OFFICE OF PLANNING & ZONING**  
 9-8-88  
 DATE

**APPROVED FOR PUBLIC WATER AND PUBLIC SEWERAGE**  
 STORM DRAINAGE SYSTEMS AND PUBLIC ROADS  
 HOWARD COUNTY DEPARTMENT OF PUBLIC WORKS  
 7-7-88  
 DATE

**APPROVED**  
 8-24-88  
 DATE



**CONSTRUCTION SPECIFICATIONS:**

- All dikes shall be constructed by earth moving equipment
- All dikes shall have positive drainage to an outlet
- The width may be wider than side slopes may be higher if desired, to facilitate crossing by construction traffic
- Field location should be adjusted as needed to utilize a stabilized slope with a minimum of 2:1 slope
- Earth dikes shall have an outlet near the top with a minimum of 18 inches diameter basin where either the dike channel or the drainage area above the dike are not adequately stabilized
- Stabilization shall be: (A) in accordance with standard specifications for seed and straw mulch or straw mulch if not in seeding season, (B) Flow channel as per chart below.

**FLOW CHANNEL STABILIZATION**

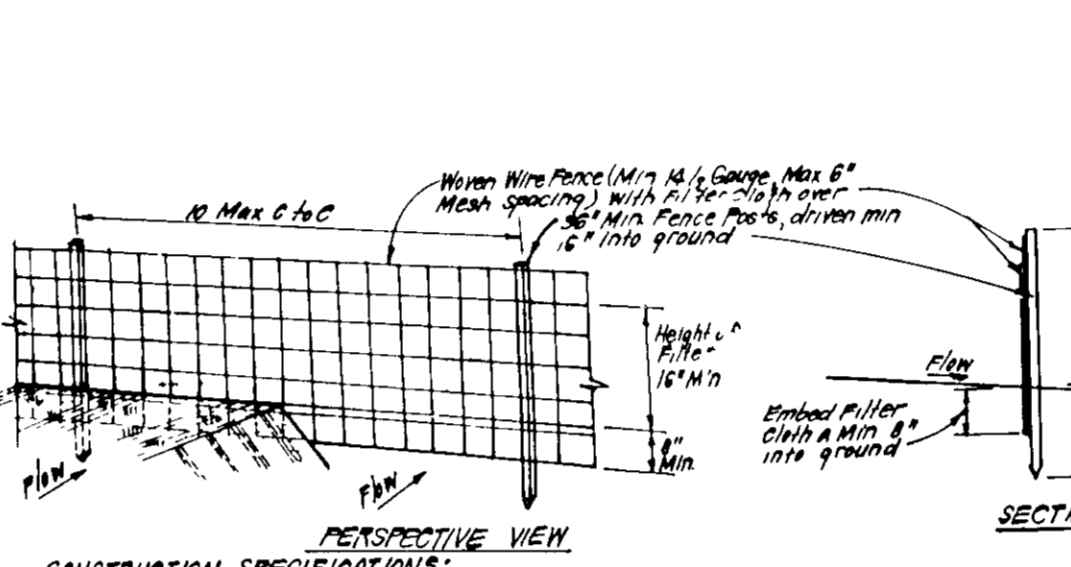
TYPE OF TREATMENT	CHANNEL	DYKE A	DYKE B
1	Grass	15-30%	Seed or Straw Mulch
2	Grass	31-40%	Seed or Straw Mulch
3	Grass	41-50%	Seed or Straw Mulch
4	Grass	51-60%	Seed or Straw Mulch
5	Grass	61-70%	Seed or Straw Mulch
6	Grass	71-80%	Seed or Straw Mulch
7	Grass	81-90%	Seed or Straw Mulch
8	Grass	91-100%	Seed or Straw Mulch

A Stone to be 2" Stone, or recycled concrete equivalent, in a layer at least 3" thick and be pressed into soil with construction equipment

B. The top to be 4" in a layer at least 3" thick, pressed into soil.

Alternatives equivalents can be substituted for any of the above materials

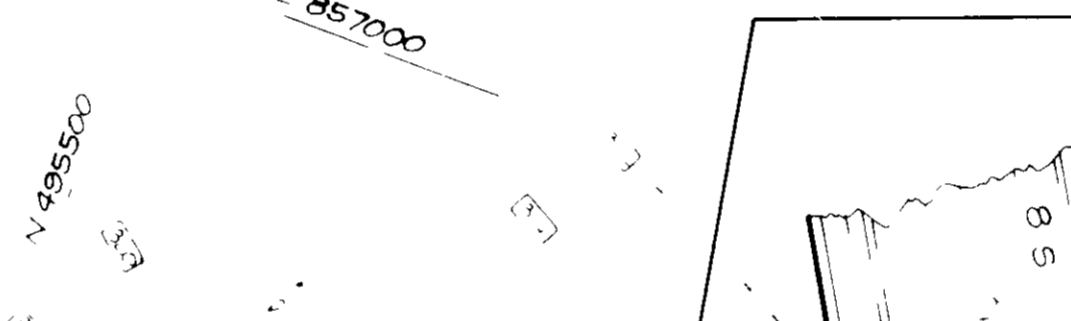
7. Periodic inspection and Required Maintenance must be provided after each rain



**CONSTRUCTION SPECIFICATIONS:**

- Woven wire fabric to be fastened securely to fence posts with wire ties at slopes
- Filter Cloth to be fastened securely to woven wire fabric with wire ties spaced every 18" at top and mid section
- When 2 sections of filter cloth adjoin each other they shall be fastened with wire ties
- Maintenance shall be performed as needed and material removed when "bales" develop in silt fence

POSTS: Steel either T or U Type or 2" Hardwood  
 FENCE: Woven Wire 14% Gauge  
 FILTER CLOTH: Filter Cloth 100%  
 PREFABRICATED UNIT: Geotextile  
 Filter Cloth, 100%  
 Filter Cloth, 100%



**TRAP #1 S.D. ST. STV**

DA = 08 AC  
 Storage Required = (08)(1800) = 14400 cf  
 Storage Provided = 14400 cf  
 Depth = 3'  
 Stone Crest Elev = 313.5  
 Bottom Dimensions = 5' x 5'  
 Clean out Elev = 311.0  
 \* 1:1 Slopes

**CONSTRUCTION SEQUENCE:**

- Obtain Grading Permit and Install Sediment and Erosion Control Devices and Stabilize.
- Excavate for Foundations and Rough Grade & Temporarily Stabilize
- Construct Structures, Sidewalks and Driveways.
- Final Grade and stabilize in accordance with Stds. & Specs.
- Upon approval of the sediment control inspector remove sediment and erosion controls and stabilize

**DEVELOPER'S BUILDER'S CERTIFICATE**

I/We certify that all development and construction will be done according to this plan of development and plan for erosion and sediment control and that all responsible personnel involved in the construction project will have a Certificate of Attendance at a Dept of Natural Resources Approved Training Program for the Control of Sediment and Erosion before beginning the project. I also authorize periodic on-site inspection by the Howard Soil Conservation District or their authorized agents, as are deemed necessary.

Signature of Developer/Builder: \_\_\_\_\_ Date: 6/29/88

1) The site shall be stabilized within the period of 30 days after the completion of the construction of the buildings and parking areas. The stabilization shall be in accordance with the specifications for stabilization of disturbed areas.

2) The stabilization shall be in accordance with the specifications for stabilization of disturbed areas.

3) The stabilization shall be in accordance with the specifications for stabilization of disturbed areas.

4) The stabilization shall be in accordance with the specifications for stabilization of disturbed areas.

5) The stabilization shall be in accordance with the specifications for stabilization of disturbed areas.

6) The stabilization shall be in accordance with the specifications for stabilization of disturbed areas.

7) The stabilization shall be in accordance with the specifications for stabilization of disturbed areas.

8) The stabilization shall be in accordance with the specifications for stabilization of disturbed areas.

9) The stabilization shall be in accordance with the specifications for stabilization of disturbed areas.

10) The stabilization shall be in accordance with the specifications for stabilization of disturbed areas.

11) The stabilization shall be in accordance with the specifications for stabilization of disturbed areas.

12) The stabilization shall be in accordance with the specifications for stabilization of disturbed areas.

13) The stabilization shall be in accordance with the specifications for stabilization of disturbed areas.

**TEMPORARY SEEDING NOTES**

Apply to graded or cleared areas likely to be redistributed where a short-term vegetative cover is needed

Soil Preparation - Loosen upper three inches of soil by raking, disking or other acceptable means before seeding, if not previously seeded

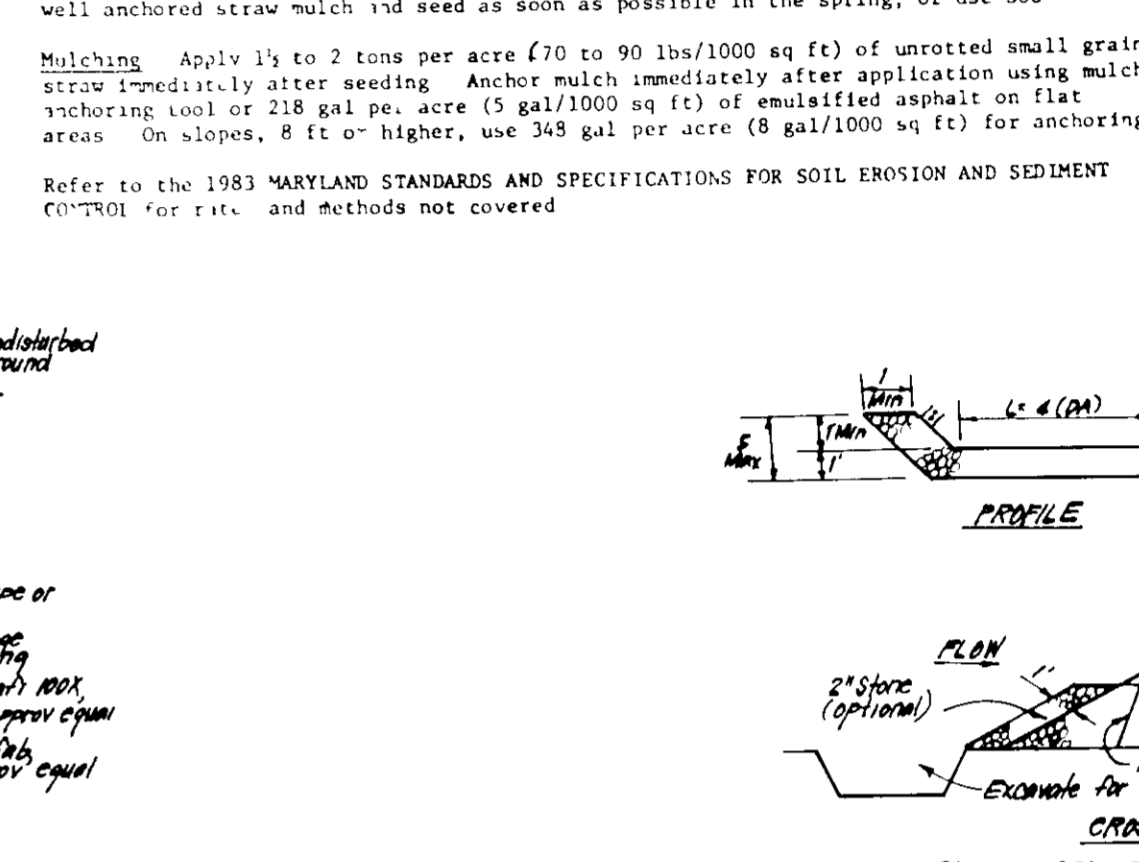
Soil Amendments - Apply 400 lbs per acre 10-10-10 fertilizer (14 lbs/1000 sq ft)

Seeding - For periods March 1 thru April 30, and August 1 thru October 15, seed with 60 lbs per acre (1.4 lbs/1000 sq ft) of Kentucky 31 Tall Fescue. For the period May 1 thru July 31, seed with 60 lbs Kentucky 31 Tall Fescue per acre of the period October 16 thru February 28, protect site by Option (1) 2 tons per acre of well anchored straw mulch and seed per acre 30000 area air fertilizer (9 lbs/1000 sq ft)

2) Acceptable - Apply 2 tons per acre dolomitic limestone (92 lbs/1000 sq ft) and 1000 lbs per acre 10-10-10 fertilizer (23 lbs/1000 sq ft) before seeding. Turnover or disc into upper three inches of soil

Seeding - For the periods March 1 thru April 30, and August 1 thru October 15, seed with 60 lbs per acre (1.4 lbs/1000 sq ft) of Kentucky 31 Tall Fescue. For the period May 1 thru July 31, seed with 60 lbs Kentucky 31 Tall Fescue per acre of the period October 16 thru February 28, protect site by Option (1) 2 tons per acre of well anchored straw mulch and seed per acre 30000 area air fertilizer (9 lbs/1000 sq ft)

2) Acceptable - Apply 2 tons per acre dolomitic limestone (92 lbs/1000 sq ft) and 1000 lbs per acre 10-10-10 fertilizer (23 lbs/1000 sq ft) before seeding. Turnover or disc into upper three inches of soil



**CONSTRUCTION SPECIFICATIONS:**

- Top under embankment shall be cleared, grubbed and stripped of any vegetation and root mat. The top shall be smooth and compacted
- The fill material for the embankment shall be free of rocks and other material as well as over 3" stones and organic material or other objectionable material. The embankment shall be constructed by traversing with equipment of which it is being constructed
- All cut and fill slopes shall be 2:1 or flatter
- The slope used in the outlet shall be small rip rap 4" x 8" with 1" thickness of 2" aggregate placed on the up-slope side on the small rip rap or embedded filter cloth in the rip rap
- Outlet shall be maintained and kept free of debris in its original dimensions until the sediment has accumulated to the design depth of the trap
- The structure shall be inspected after each rain and repairs made as needed
- Construction operations shall be carried out in such a manner that erosion and water pollution is minimized
- The structure shall be removed and the area stabilized when the drainage area has been properly stabilized

**STONE OUTLET SEDIMENT TRAP (S.O.S.T.) STV**

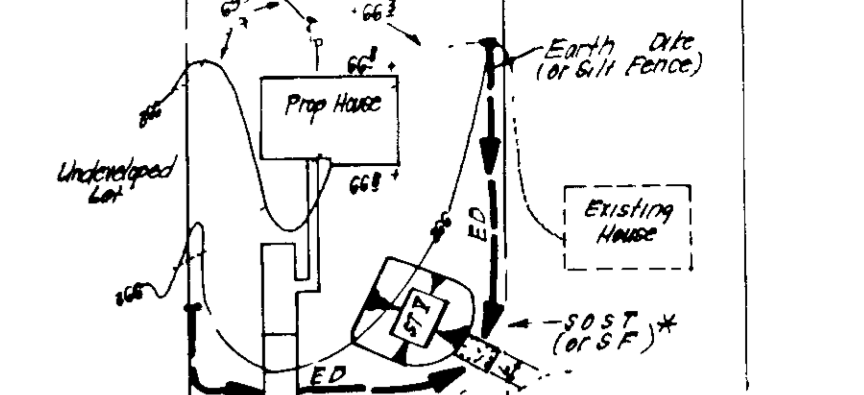
**CONSTRUCTION SEQUENCE:**

- Obtain Grading Permit and Install Sediment and Erosion Control Devices and Stabilize.
- Excavate for Foundations and Rough Grade & Temporarily Stabilize
- Construct Structures, Sidewalks and Driveways.
- Final Grade and stabilize in accordance with Stds. & Specs.
- Upon approval of the sediment control inspector remove sediment and erosion controls and stabilize

**ENGINEER'S CERTIFICATE**

I hereby certify that this plan for Erosion and Sediment Control represents a practical and workable plan based on my personal knowledge of the site conditions and that it was prepared in accordance with the requirements of the Howard Soil Conservation District.

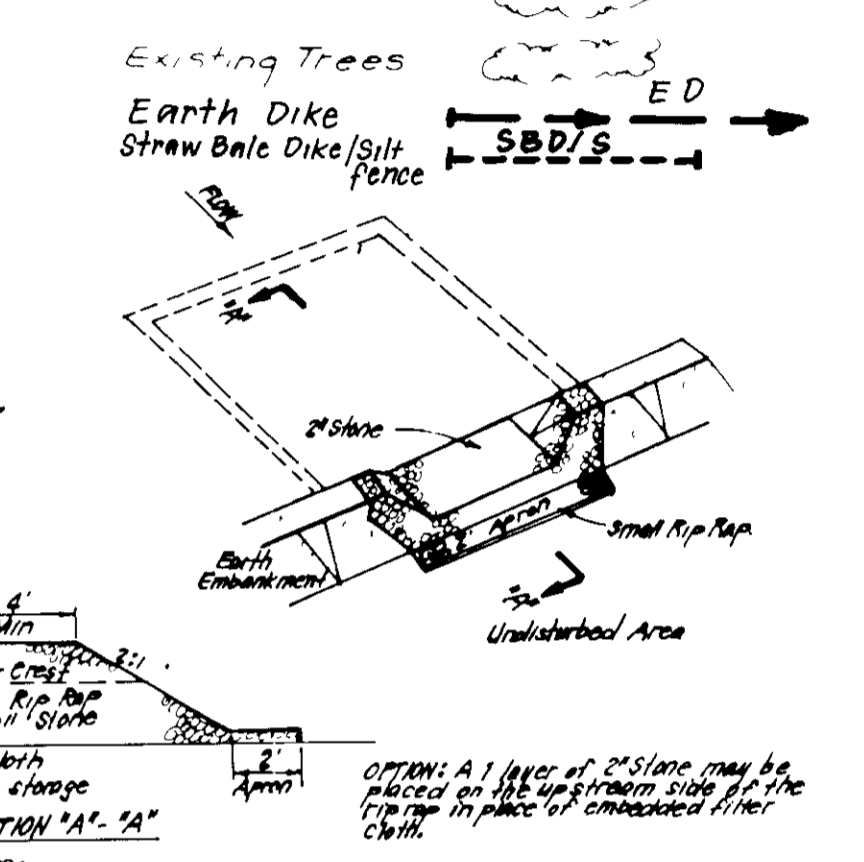
Signature of Engineer: \_\_\_\_\_ Date: 6/15/88



**LEGEND**

Contour Interval 2 FT  
 Existing Contour ---  
 Proposed Contour ---  
 Spot Elevation ---  
 Direction of Drainage ---  
 Walk out Basement ---  
 Trees to be Saved ---

Earth Dike  
 Straw Bale Dike/Silt Fence



**CONSTRUCTION SPECIFICATIONS:**

- Top under embankment shall be cleared, grubbed and stripped of any vegetation and root mat. The top shall be smooth and compacted
- The fill material for the embankment shall be free of rocks and other material as well as over 3" stones and organic material or other objectionable material. The embankment shall be constructed by traversing with equipment of which it is being constructed
- All cut and fill slopes shall be 2:1 or flatter
- The slope used in the outlet shall be small rip rap 4" x 8" with 1" thickness of 2" aggregate placed on the up-slope side on the small rip rap or embedded filter cloth in the rip rap
- Outlet shall be maintained and kept free of debris in its original dimensions until the sediment has accumulated to the design depth of the trap
- The structure shall be inspected after each rain and repairs made as needed
- Construction operations shall be carried out in such a manner that erosion and water pollution is minimized
- The structure shall be removed and the area stabilized when the drainage area has been properly stabilized

**CONSTRUCTION SEQUENCE:**

- Obtain Grading Permit and Install Sediment and Erosion Control Devices and Stabilize.
- Excavate for Foundations and Rough Grade & Temporarily Stabilize
- Construct Structures, Sidewalks and Driveways.
- Final Grade and stabilize in accordance with Stds. & Specs.
- Upon approval of the sediment control inspector remove sediment and erosion controls and stabilize

**ENGINEER'S CERTIFICATE**

I hereby certify that this plan for Erosion and Sediment Control represents a practical and workable plan based on my personal knowledge of the site conditions and that it was prepared in accordance with the requirements of the Howard Soil Conservation District.

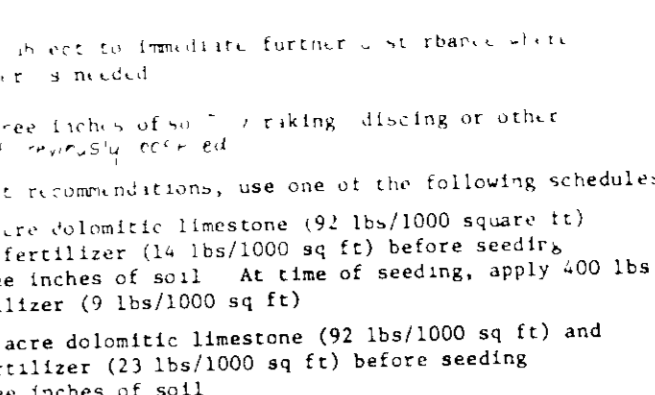
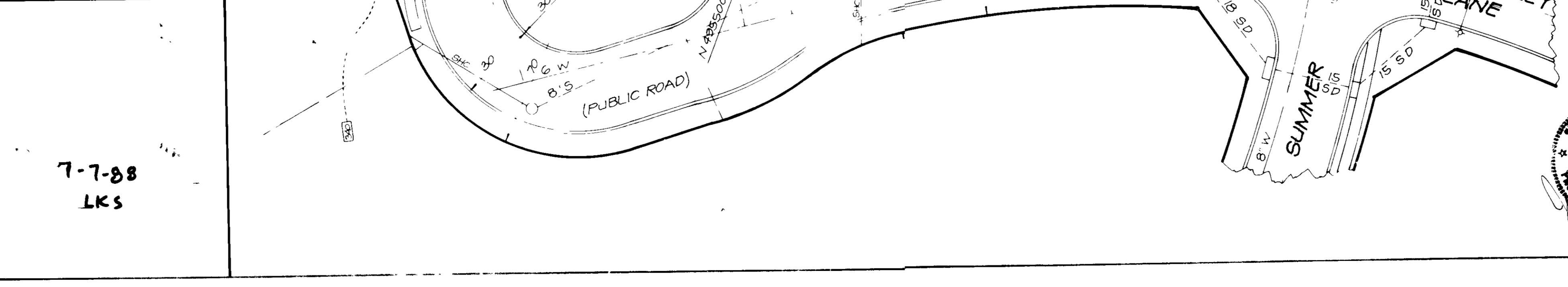
Signature of Engineer: \_\_\_\_\_ Date: 6/15/88

**APPROVED FOR PUBLIC WATER AND PUBLIC SEWERAGE SYSTEMS**  
 HOWARD COUNTY HEALTH DEPARTMENT  
 8-30-88  
 DATE

**APPROVED HOWARD COUNTY OFFICE OF PLANNING & ZONING**  
 9-8-88  
 DATE

**APPROVED FOR PUBLIC WATER AND PUBLIC SEWERAGE**  
 STORM DRAINAGE SYSTEMS AND PUBLIC ROADS  
 HOWARD COUNTY DEPARTMENT OF PUBLIC WORKS  
 7-7-88  
 DATE

**APPROVED**  
 8-24-88  
 DATE



**CONSTRUCTION SPECIFICATIONS:**

- All dikes shall be constructed by earth moving equipment
- All dikes shall have positive drainage to an outlet
- The width may be wider than side slopes may be higher if desired, to facilitate crossing by construction traffic
- Field location should be adjusted as needed to utilize a stabilized slope with a minimum of 2:1 slope
- Earth dikes shall have an outlet near the top with a minimum of 18 inches diameter basin where either the dike channel or the drainage area above the dike are not adequately stabilized
- Stabilization shall be: (A) in accordance with standard specifications for seed and straw mulch or straw mulch if not in seeding season, (B) Flow channel as per chart below.

**FLOW CHANNEL STABILIZATION**

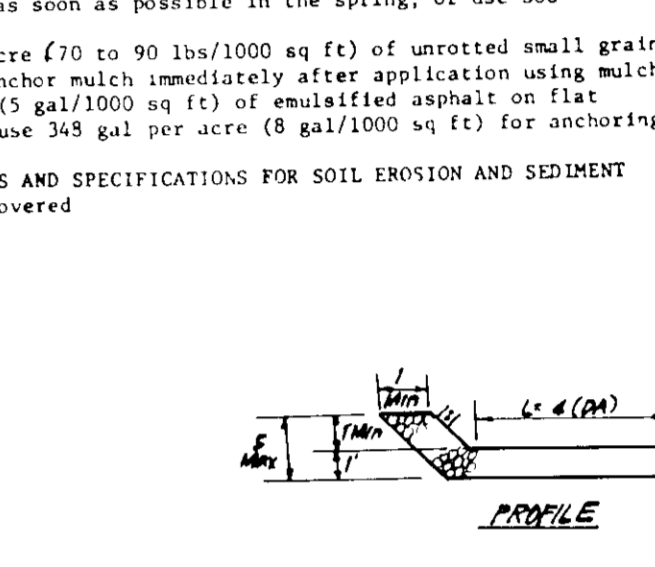
TYPE OF TREATMENT	CHANNEL	DYKE A	DYKE B
1	Grass	15-30%	Seed or Straw Mulch
2	Grass	31-40%	Seed or Straw Mulch
3	Grass	41-50%	Seed or Straw Mulch
4	Grass	51-60%	Seed or Straw Mulch
5	Grass	61-70%	Seed or Straw Mulch
6	Grass	71-80%	Seed or Straw Mulch
7	Grass	81-90%	Seed or Straw Mulch
8	Grass	91-100%	Seed or Straw Mulch

A Stone to be 2" Stone, or recycled concrete equivalent, in a layer at least 3" thick and be pressed into soil with construction equipment

B. The top to be 4" in a layer at least 3" thick, pressed into soil.

Alternatives equivalents can be substituted for any of the above materials

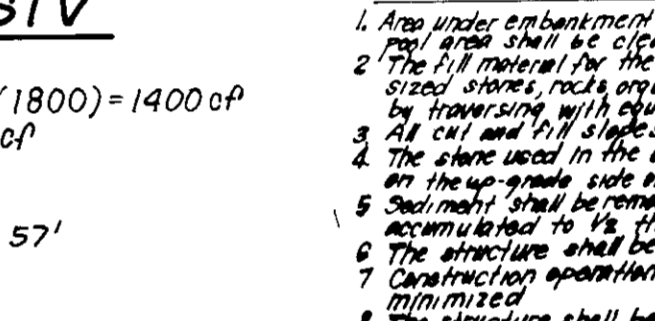
7. Periodic inspection and Required Maintenance must be provided after each rain



**CONSTRUCTION SPECIFICATIONS:**

- Woven wire fabric to be fastened securely to fence posts with wire ties at slopes
- Filter Cloth to be fastened securely to woven wire fabric with wire ties spaced every 18" at top and mid section
- When 2 sections of filter cloth adjoin each other they shall be fastened with wire ties
- Maintenance shall be performed as needed and material removed when "bales" develop in silt fence

POSTS: Steel either T or U Type or 2" Hardwood  
 FENCE: Woven Wire 14% Gauge  
 FILTER CLOTH: Filter Cloth 100%  
 PREFABRICATED UNIT: Geotextile  
 Filter Cloth, 100%  
 Filter Cloth, 100%



**TRAP #1 S.D. ST. STV**

DA = 08 AC  
 Storage Required = (08)(1800) = 14400 cf  
 Storage Provided = 14400 cf  
 Depth = 3'  
 Stone Crest Elev = 313.5  
 Bottom Dimensions = 5' x 5'  
 Clean out Elev = 311.0  
 \* 1:1 Slopes

**CONSTRUCTION SEQUENCE:**

- Obtain Grading Permit and Install Sediment and Erosion Control Devices and Stabilize.
- Excavate for Foundations and Rough Grade & Temporarily Stabilize
- Construct Structures, Sidewalks and Driveways.
- Final Grade and stabilize in accordance with Stds. & Specs.
- Upon approval of the sediment control inspector remove sediment and erosion controls and stabilize

**DEVELOPER'S BUILDER'S CERTIFICATE**

I/We certify that all development and construction will be done according to this plan of development and plan for erosion and sediment control and that all responsible personnel involved in the construction project will have a Certificate of Attendance at a Dept of Natural Resources Approved Training Program for the Control of Sediment and Erosion before beginning the project. I also authorize periodic on-site inspection by the Howard Soil Conservation District or their authorized agents, as are deemed necessary.

Signature of Developer/Builder: \_\_\_\_\_ Date: 6/29/88

**CLARK • FINEROCK & SACKETT, INC**  
 ENGINEERS • PLANNERS • SURVEYORS

DESIGNED: GLB  
 DRAWN: GS  
 CHECKED: GLB  
 DATE: 6-9-88

**SEDIMENT EROSION CONTROL PLAN**  
 LOT 38-40 and 55-59  
**COLUMBIA**  
 VILLAGE OF LONGREACH  
 SECTION 4  
 6TH ELECTION DISTRICT  
 HOWARD COUNTY MARYLAND  
 FOR WOODMAN HOMES  
 WIDE LAKE VILLAGE GREEN SUITE 300  
 COLUMBIA, MARYLAND 21044

SCALE: 1"=30'  
 DRAWING: 2 of 2  
 JOB NO: 88-076  
 FILE NO: 88-076 SE

SDR 88-240c