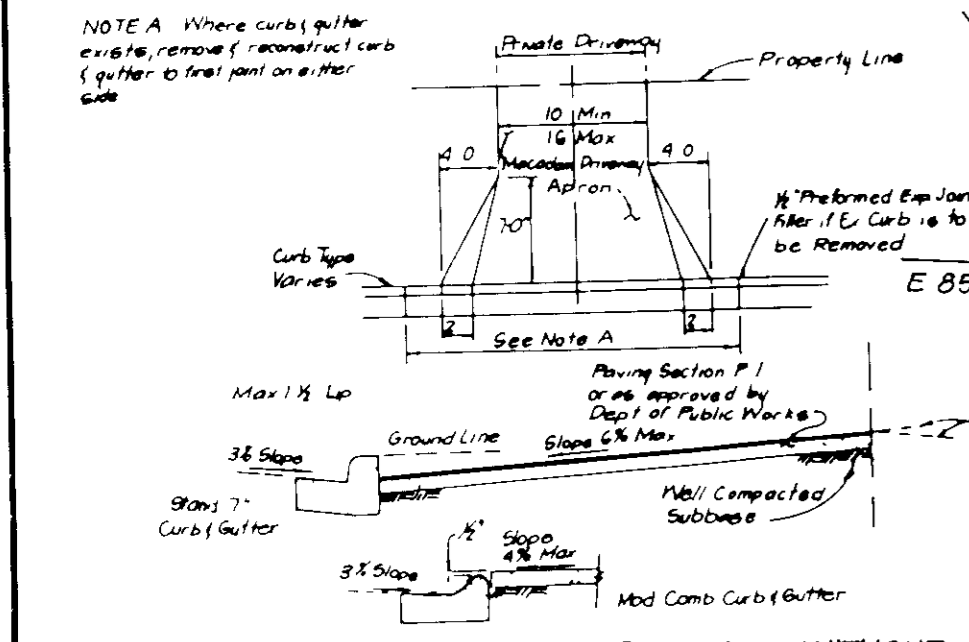
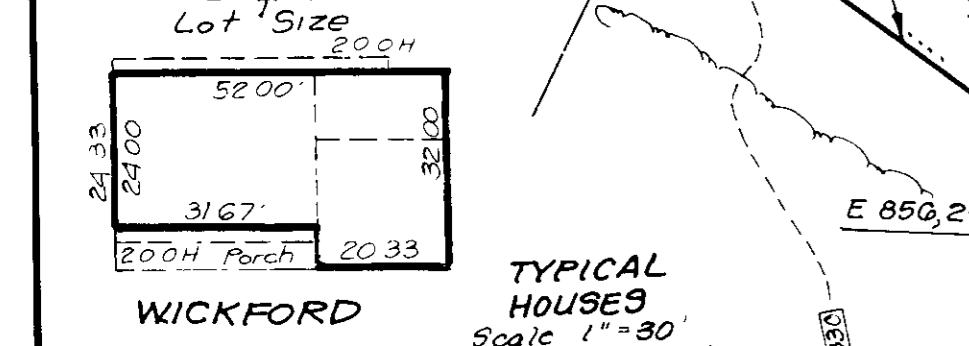
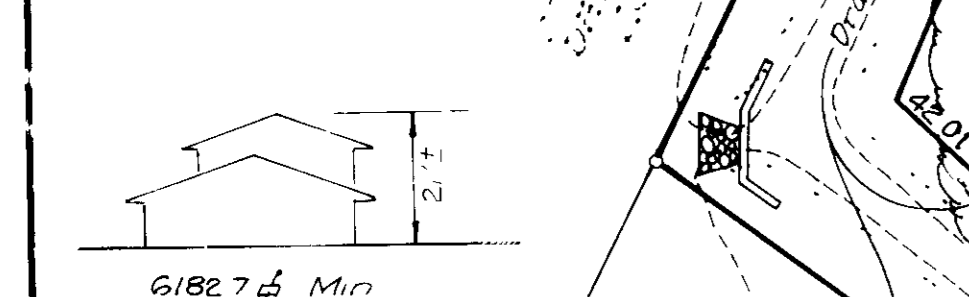
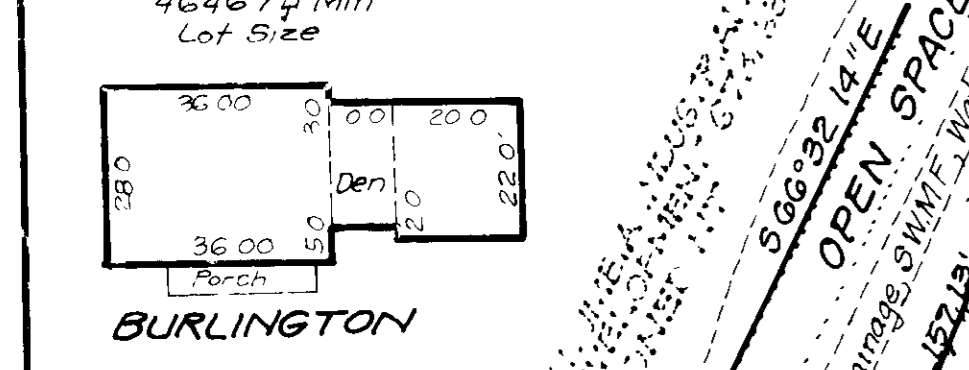
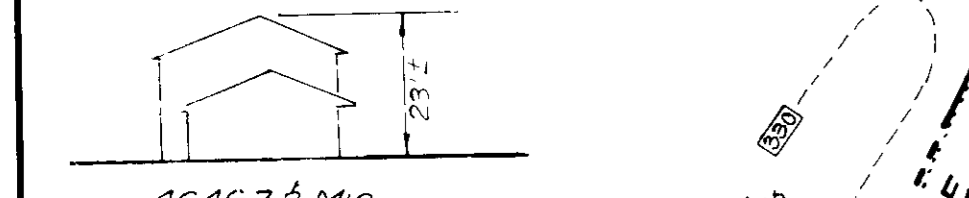


- GENERAL NOTES**
- The Land included is zoned R-12
  - Coordinates shown hereon are based on the Maryland State Plane Coordinate Grid System as projected by Howard County Control Station No. 24430014-2343001
  - All roadways are public and existing
  - Total area included in this plan: 5.935
  - Any damage to County owned rights-of-way shall be corrected at the developer's expense
  - Total number of lots included in this plan: 27
  - Stormwater management for this project is provided for by previously approved plan F-88-13
  - Lot coverage: 30%
  - Sediment and erosion control provided by previously approved plans F-88-13
  - Topo taken from Drainage Area #4 Soils Map prepared by The Riemer Group, Inc., October, 1987.
  - Previous plan reference numbers: S-88-15, P-88-53, F-88-13

**DRIVEWAY ABUTTING CLOSED SECTION WITH MODIFIED COMB CURB & GUTTER & SIDEWALK**



**DRIVEWAY ABUTTING CLOSED SECTION WITHOUT CONCRETE SIDEWALK**



**WICKFORD**  
Scale 1"=30'  
Note: All houses have roof eaves approx 1' front & rear

**LEGEND**

- Contour Interval
- Proposed Contour
- Exist Contour
- Spot Elev.
- Direction of Drainage
- Wala. Cut Easement
- Trees to be Saved

**REVISIONS**

3	Rev. hse & grd Lot 9, Buckingham to Nantucket (see Lot 12)	10-19-89
2	Rev. hse & grd Lots 3, 6, 16, 24 & 23	8-28-88

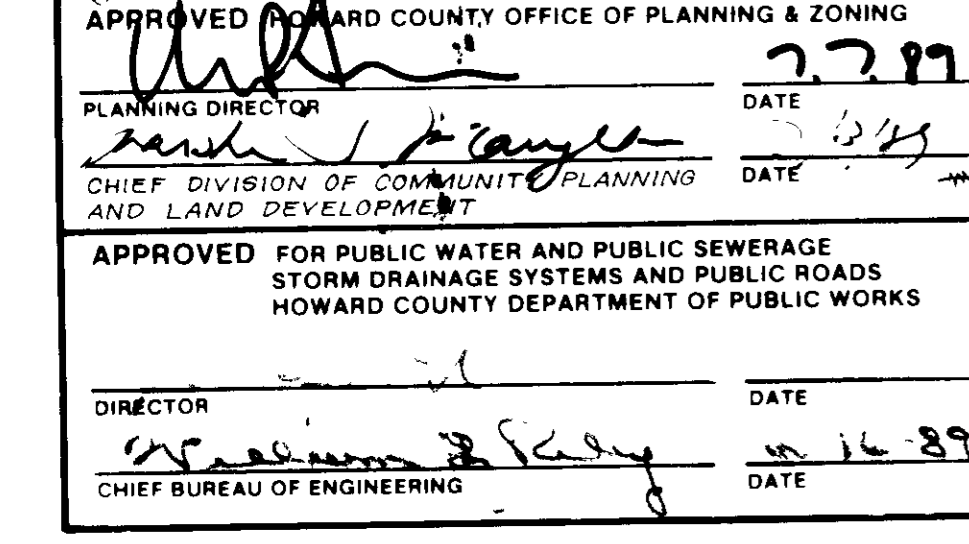
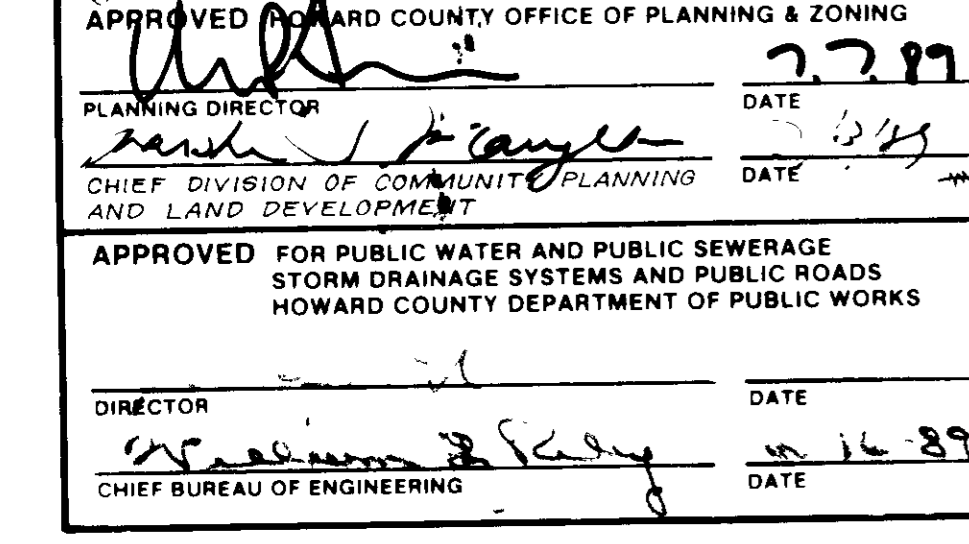
**APPROVED FOR PUBLIC WATER AND PUBLIC SEWERAGE SYSTEMS**  
HOWARD COUNTY HEALTH DEPARTMENT  
DATE: 6/23/89

**APPROVED HOWARD COUNTY OFFICE OF PLANNING & ZONING**  
PLANNING DIRECTOR: [Signature]  
DATE: 7-27-89

**APPROVED FOR PUBLIC WATER AND PUBLIC SEWERAGE**  
STORM DRAINAGE SYSTEMS AND PUBLIC ROADS  
HOWARD COUNTY DEPARTMENT OF PUBLIC WORKS  
DATE: 6-30-88

**REVISIONS**

5	Rev. ex. grd. lots 23, 24 & 25 to show ex. swale	10-19-89
4	Rev. hse & grd Lots 7, 12, 14, 18, 22 & 28	8-8-88



Lot	Street	Address	Lot	Street	Address
2	8306	Painted Rock Rd	17	8307	Stairtop Court
3	8308		18	8309	
4	8310		19	8311	
5	8312		20	8313	
6	8314		21	8312	
7	8316		22	8310	
8	8318		23	8308	
9	8320		24	8306	
10	8322		25	8304	
11	8324		26	8320	
12	8321		27	8305	Painted Rock Rd
13	8317		28	8303	
14	8315		29	8301	
15	8313				
16	8305	Stairtop Court			

**SPECIAL NOTES**

- Approved Road Construction Plans shall be used for all public utilities
- Public water and sewer shown for reference only. For more detailed information see water and sewer plans Contract No. [ ]
- Water and sewer house connections not included in a Developer's Agreement shall conform to Howard County Plumbing Code. The onsite WHC shall be 1" copper & SHC shall be 4" iron pipe

Lot No	Lot Area	25% or Greater Slope & Ret Wall	Buildable Lot Area
28	8554 sq	192 sq	8362 sq

SUBDIVISION NAME	SECT./AREA	LOTS
PAINTER'S HILL	ONE	1 thru 30
PLAT No or I/P BLOCK No	TAX/MAP No	ELEC DIST
8G10 & 8G11	19	Gth
WATER CODE	SEWER CODE	
3450000	E08	

**CLARK • FINEPROCK & SACKETT, INC**  
ENGINEERS • PLANNERS • SURVEYORS  
7185 MONTE LWAY • C. L. WYOMING • BALTIMORE, MD 21286

**SITE DEVELOPMENT PLAN**  
LOTS 1-29

**PAINTER'S HILL**  
SECTION ONE  
4th ELECTION DISTRICT  
HOWARD COUNTY, MARYLAND

FOR: RYAN HOMES, INC  
5175 Guilford Road #200  
Columbia, Maryland 21046

DATE: 10/19/88

SCALE: 1"=30'  
DRAWING: 1002  
JOB NO: 88-063  
FILE NO: 88-063

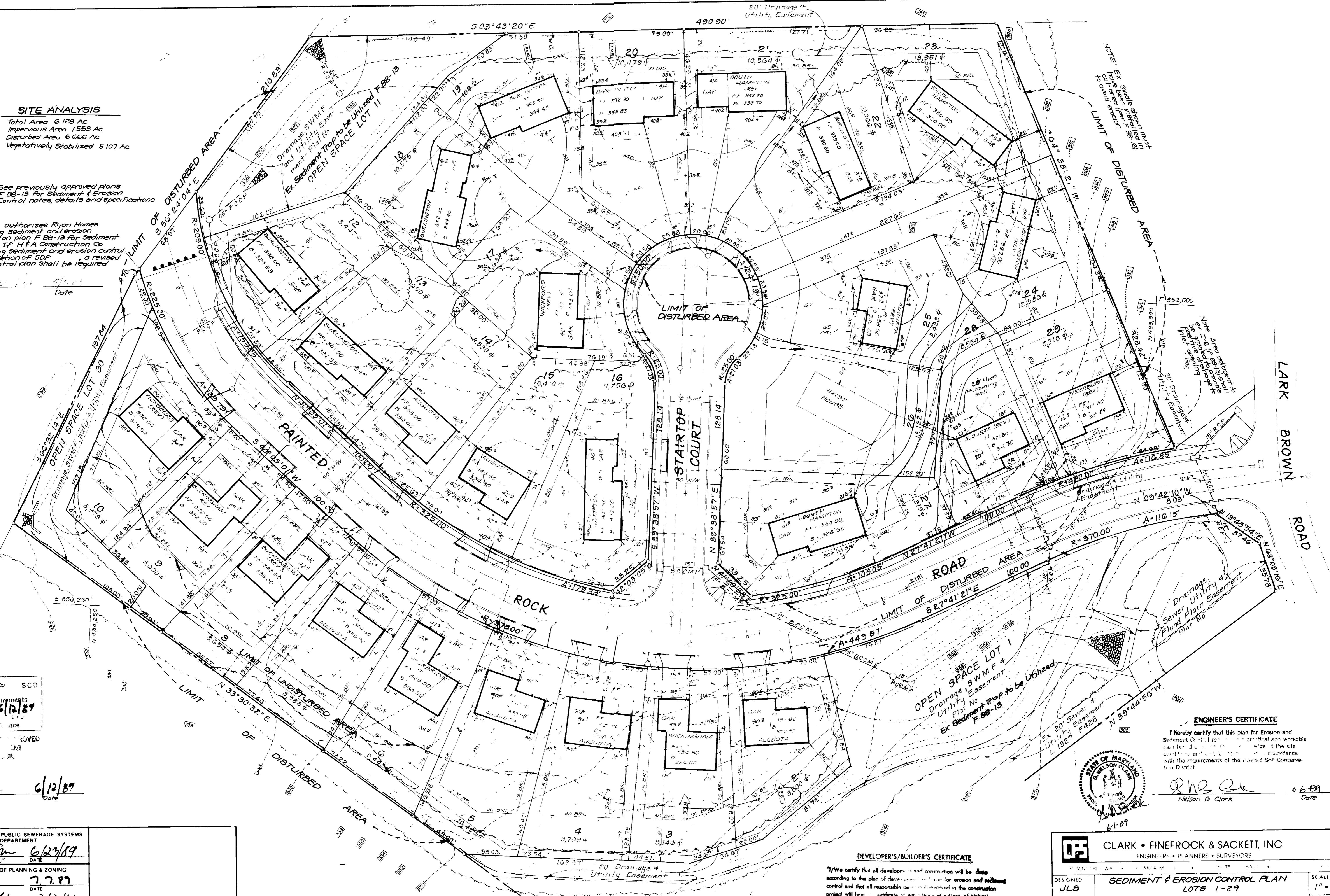
**SDP-88-228**

**SITE ANALYSIS**  
 Total Area 6.128 Ac  
 Impervious Area 1.553 Ac  
 Disturbed Area 6.666 Ac  
 Vegetatively Stabilized 5.107 Ac

NOTE See previously approved plans F 88-13 for Sediment & Erosion Control notes, details and specifications

H & A Construction Co. Inc. authorizes Ryan Homes Inc. to utilize the existing Sediment and erosion control measures shown on plan F 88-13 for sediment control for this project IF H & A Construction Co. Inc. removes the existing sediment and erosion control measures prior to completion of SDP, a revised Sediment and erosion control plan shall be required

Developer: *H & A Construction Co. Inc.* Date: *5/31/89*



Reviewed for Howard Co SCD  
 and made the following recommendations  
*John M. Fisher* 6/12/89  
 LS  
 APPROVED  
 DATE

*Stephen Smith* 6/12/89  
 Approved  
 Date

APPROVED FOR PUBLIC WATER AND PUBLIC SEWERAGE SYSTEMS  
 HOWARD COUNTY HEALTH DEPARTMENT  
*James M. Bond* 6/23/89  
 COUNTY HEALTH OFFICER  
 DATE

APPROVED HOWARD COUNTY OFFICE OF PLANNING & ZONING  
*Mark S. L'Amore* 7/7/89  
 PLANNING DIRECTOR  
 DATE

CHIEF DIVISION OF COMMUNITY PLANNING AND LAND DEVELOPMENT

APPROVED FOR PUBLIC WATER AND PUBLIC SEWERAGE SYSTEMS  
 STORM DRAINAGE SYSTEMS AND PUBLIC ROADS  
 HOWARD COUNTY DEPARTMENT OF PUBLIC WORKS  
*James M. Bond* 6/16/89  
 DIRECTOR  
 DATE

CHIEF BUREAU OF ENGINEERING  
*William B. Ziegler* 6-16-89  
 DATE

6-30-88

1 Rev ex grade at rear of lots 23, 24 & 29 10/19/90  
 2 REVISION DATE

**DEVELOPER'S/BUILDER'S CERTIFICATE**  
 "I/We certify that all development and construction will be done according to the plan of development and construction and that all responsible parties involved in the construction project will have a certificate of Attendance at a Dept of Natural Resources Approved Training Program for Control of Sediment and Erosion before beginning the project. I also authorize periodic on-site inspection by the Howard Soil Conservation District or their authorized agents, as are deemed necessary."  
*Signature of Developer/Builder* 5-31-89  
 Date

**ENGINEER'S CERTIFICATE**  
 I hereby certify that this plan for Erosion and Sediment Control is a complete and workable plan based on the site conditions and in accordance with the requirements of the Howard Soil Conservation District.  
*Nelson G. Clark* 6-1-89  
 Date

**CLARK • FINEPROCK & SACKETT, INC**  
 ENGINEERS • PLANNERS • SURVEYORS

DESIGNED JLS	<b>SEDIMENT &amp; EROSION CONTROL PLAN</b> LOTS 1-29	SCALE 1" = 30'
DRAWN BAL		DRAWING 2 of 2
CHECKED JLS	<b>PAINTER'S HILL</b> SECTION ONE 6th ELECTION DISTRICT HOWARD COUNTY, MARYLAND	JOB NO 88-003
DATE May 1988		FOR: RYAN HOMES, INC 9175 Guilford Road #200 Columbia, Maryland 21046

SDP-88-228