

SOFT 2
 DRAINAGE AREA = 132 ACRES
 STORAGE REQUIRED = 2,376 CF
 STORAGE PROVIDED = 2,520 CF
 OUTLET LENGTH = 6'
 DEPTH = 2'
 TOP CREST EL = 444.50
 BOTTOM EL = 441.50
 CLEANOUT EL = 440.00

LOT NO.	STREET ADDRESS
200	# 2000 FINE NEEDLE DRIVE
210	# 2036 TIMBER TRAILS COURT
211	# 2030 " " " "
212	# 2045 " " " "
213	# 2047 " " " "
214	# 2054 " " " "
215	# 2050 " " " "
216	# 2046 " " " "
217	# 2042 " " " "
218	# 2003 SARASOTA COURT
219	# 2007 " " " "
220	# 2011 " " " "
221	# 2015 " " " "
222	# 2010 " " " "
223	# 2023 " " " "
224	# 2018 " " " "
225	# 2014 " " " "
226	# 2010 " " " "
227	# 2000 " " " "
228	# 2034 TIMBER TRAILS COURT

- GENERAL NOTES**
- 1) THE LAND INCLUDED IS ZONED R-20
 - 2) COORDINATES SHOWN ARE EXTENSIONS MADE FROM THE MARYLAND STATE PLANE COORDINATE SYSTEM. HEARINGS REFER TO THE TRUE NORTH AND ARE BASED ON HOWARD COUNTY DELETIC SURVEY.
 - 3) THE AREA COVERED IN THIS SUBMISSION IS LOCATED ON "A" MAP.
 - 4) THE TOTAL AREA ON THIS PLAN IS 323,922 SF (8.8 AC).
 - 5) ALL ROADS ARE PUBLIC AND EXISTING.
 - 6) ANY DAMAGE TO COUNTY "WHEEL RIGHT-OF-WAYS" SHALL BE CORRECTED AT THE DEVELOPER'S EXPENSE.
 - 7) TOTAL NUMBER OF LOTS IN THIS SUBMISSION ARE 20.
 - 8) STREET TREES WILL BE PROVIDED IN ACCORDANCE WITH SECTION 16 OF THE HOWARD COUNTY SUBDIVISION REGULATIONS BY THE DEVELOPER.
 - 9) PREVIOUS RELATED PLANS, SKETCH PLAN 86-20, PREL PLAN 87-20, FINAL PLAN 88-33 AND S.D.P. 88-108.

STATION	LOT	ELEV.
0+44 LT (D&C)	LOT 200	415.00
1+06 RT	LOT 277	412.16
8+51 RT	LOT 276	410.10
MH*536 TO MH*515		
0+17 RT	LOT 235	420.51
1+10 LT	LOT 201	423.02
MH*515 TO MH*500		
0+50 LT	LOTS 200 & 203	425.42
0+70 RT	LOT 234	426.51
MH*500 TO MH*501		
0+11 LT	LOTS 204, 1005	428.44
MH*501 TO MH*500		
0+06 RT	LOT 200	434.79
0+77 LT	LOT 200	434.87
MH*500 TO MH*503		
0+08 RT	LOT 200	436.60
0+05 LT	LOT 210	437.65
MH*503 TO MH*505		
MH*504 RT	LOT 210	440.29
0+31 RT	LOT 217	441.89
1+07 RT	LOT 210	445.30
1+50 LT	LOTS 211 & 212	450.82
MH*505 LT	LOT 210	453.50
MH*505 RT	LOTS 211 & 212	449.47
MH*505 TO MH*507		
MH*506 LT	LOT 210	443.77
0+39 LT	LOT 200	444.21
MH*507 TO MH*505		
0+30 LT (D&C)	LOTS 201 & 202	449.14
0+72 RT (D&C)	LOTS 200 & 207	448.84
MH*500 LT	LOTS 200 & 207	448.76
MH*500 RT	LOT 205 (1%)	445.41

SEE SHEET 203
 SEE SHEET 204
 SEE SHEET 205
 SEE SHEET 206
 SEE SHEET 207
 SEE SHEET 208
 SEE SHEET 209
 SEE SHEET 210
 SEE SHEET 211
 SEE SHEET 212
 SEE SHEET 213
 SEE SHEET 214
 SEE SHEET 215
 SEE SHEET 216
 SEE SHEET 217
 SEE SHEET 218
 SEE SHEET 219
 SEE SHEET 220
 SEE SHEET 221
 SEE SHEET 222
 SEE SHEET 223
 SEE SHEET 224
 SEE SHEET 225
 SEE SHEET 226
 SEE SHEET 227
 SEE SHEET 228
 SEE SHEET 229
 SEE SHEET 230

APPROVED FOR PUBLIC WATER AND PUBLIC SEWERAGE SYSTEMS HOWARD COUNTY HEALTH DEPARTMENT
 COUNTY HEALTH OFFICER: *[Signature]* DATE: 5-31-88
 APPROVED HOWARD COUNTY OFFICE OF PLANNING & ZONING
 PLANNING DIRECTOR: *[Signature]* DATE: 6-9-88
 APPROVED FOR PUBLIC WATER AND PUBLIC SEWERAGE STORM DRAINAGE SYSTEMS AND PUBLIC ROADS HOWARD COUNTY DEPARTMENT OF PUBLIC WORKS
 DIRECTOR: *[Signature]* DATE: 5-21-88
 CHIEF BUREAU OF ENGINEERING: *[Signature]* DATE: 5-11-88

DEVELOPERS/BUILDER'S CERTIFICATE
 I / WE CERTIFY THAT ALL DEVELOPMENT AND CONSTRUCTION WILL BE DONE ACCORDING TO THIS PLAN OF DEVELOPMENT AND PLAN FOR EROSION AND SEDIMENT CONTROL AND THAT ALL RESPONSIBLE PERSONS INVOLVED IN THE CONSTRUCTION PROJECT WILL HAVE A CERTIFICATE OF ATTENDANCE AT A DEPT OF NATURAL RESOURCES APPROVED TRAINING PROGRAM FOR THE CONTROL OF SEDIMENT AND EROSION CONTROL BEFORE BEGINNING THE PROJECT. I ALSO AUTHORIZE PERIODIC ON-SITE INSPECTION BY THE HOWARD SOIL CONSERVATION DISTRICT OF THEIR AUTHORIZED AGENTS AS DEEMED NECESSARY.
 SIGNATURE OF DEVELOPER / BUILDER: *Robert Melt* DATE: 4/27/88

ENGINEERS CERTIFICATE
 I CERTIFY THAT THIS PLAN FOR EROSION AND SEDIMENT CONTROL REPRESENTS A PRACTICAL AND WORKABLE PLAN BASED ON MY PERSONAL KNOWLEDGE OF SITE CONDITIONS AND THAT IT WAS PREPARED IN ACCORDANCE WITH THE REQUIREMENTS OF THE HOWARD SOIL CONSERVATION DISTRICT.
 SIGNATURE: *Walter J. Hinder* DATE: 5/14/88

THIS DEVELOPMENT PLAN IS APPROVED FOR SOIL EROSION AND SEDIMENT CONTROL BY THE HOWARD SOIL CONSERVATION DISTRICT.
 SIGNATURE: *[Signature]* DATE: 5/18/88

THIS DEVELOPMENT PLAN IS APPROVED FOR SOIL EROSION AND SEDIMENT CONTROL BY THE HOWARD SOIL CONSERVATION DISTRICT.
 SIGNATURE: *[Signature]* DATE: 5/14/88

SUBMITTER NAME	TURF VALLEY OVERLOOK	SECTION / AREA	2 / 1	LOTS	209-228 (20 LOTS)
PLAT NO.	763747638	ZONE	R-20	FILE NO.	2ND
MAPS FILE	H-07	SEWER CODE	6092000		

LAND DESIGN ASSOCIATES
 718 HIGHWOOD DRIVE
 BALTIMORE MARYLAND 21212
 (301) 323-0805

DESIGNED	DRG	SCALE	1"=50'
DRAWN	RDP	DRAWING	1 OF 3
CHECKED	ELP	JOB NO.	
DATE	5/2/88	FILE NO.	

TURF VALLEY OVERLOOK
 SITE DEVELOPMENT & SEDIMENT CONTROL PLAN
 SECTION 2 AREA 1
 LOTS 209-228 (20 LOTS)
 2ND ELECTION DISTRICT HOWARD CO. MARYLAND
 FOR AWAL T BUILDERS INC.
 9051 BALTIMORE NATIONAL PIKE
 ELLICOTT CITY MD. 21043 (301) 461-1315
 SDP-BB-168

4-14-88

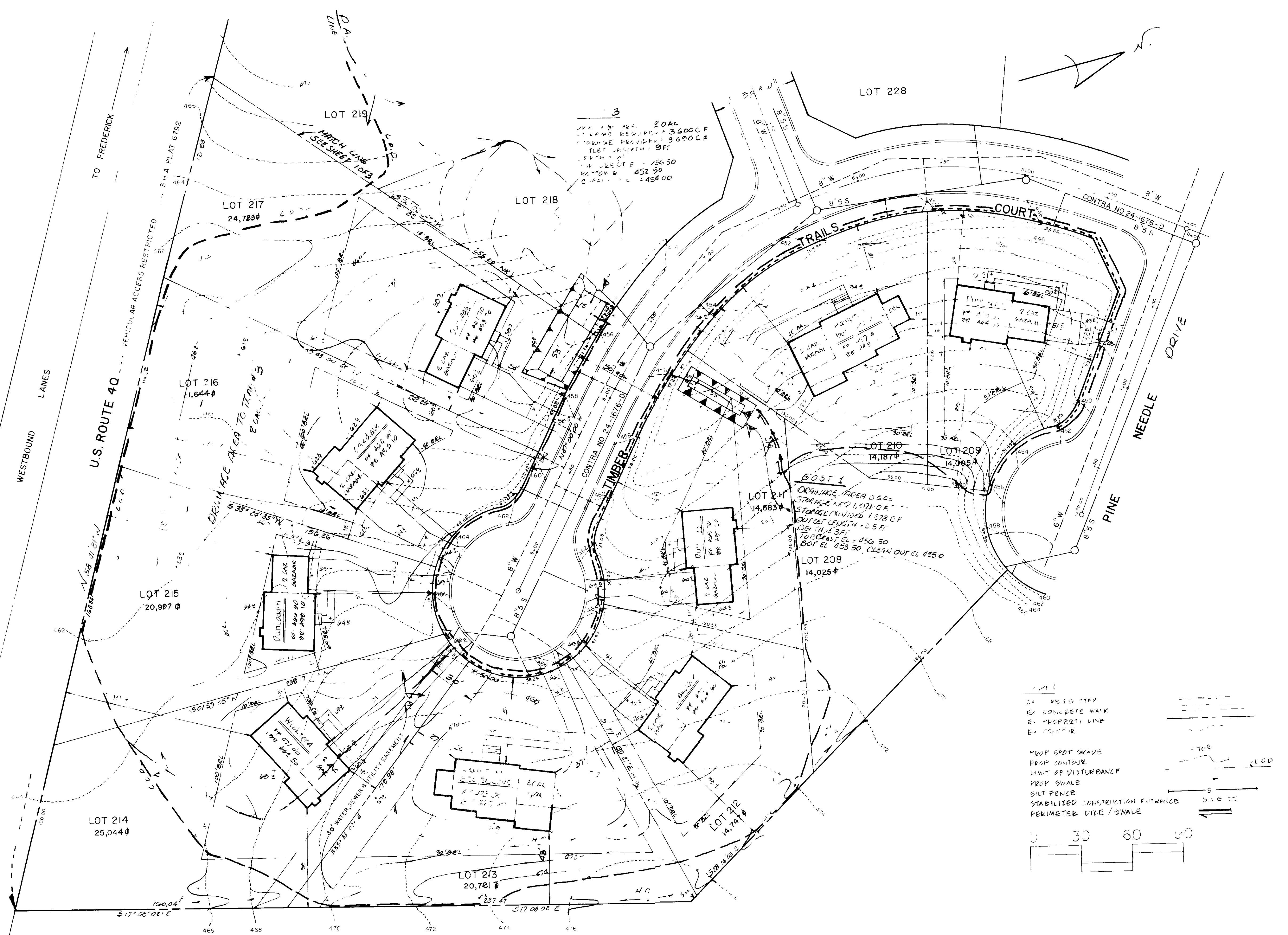
WESTBOUND LANE

VEHICULAR ACCESS RESTRICTED

U.S. ROUTE 40

S & A PLAT No 6792

SDP-BB-168



4-14-88

APPROVED FOR PUBLIC WATER AND PUBLIC SEWERAGE SYSTEMS HOWARD COUNTY HEALTH DEPARTMENT
 COUNTY HEALTH OFFICER: *[Signature]* DATE: 5-31-88
 APPROVED HOWARD COUNTY OFFICE OF PLANNING & ZONING
 PLANNING DIRECTOR: *[Signature]* DATE: 6-19-88
 CHIEF DIVISION OF COMMUNITY PLANNING & LAND DEVELOPMENT: *[Signature]* DATE: 6-2-88
 APPROVED FOR PUBLIC WATER AND PUBLIC SEWERAGE STORM DRAINAGE SYSTEMS AND PUBLIC ROADS HOWARD COUNTY DEPARTMENT OF PUBLIC WORKS
 DIRECTOR: *[Signature]* DATE: 5-27-88
 CHIEF BUREAU OF ENGINEERING: *[Signature]* DATE: 5-24-88

DEVELOPERS/BUILDER'S CERTIFICATE
 I, WE CERTIFY THAT ALL DEVELOPMENT AND CONSTRUCTION WILL BE DONE ACCORDING TO THIS PLAN OF DEVELOPMENT AND PLAN FOR EROSION AND SEDIMENT CONTROL AND THAT ALL RESPONSIBLE PERSONS INVOLVED IN THE CONSTRUCTION PROJECT WILL HAVE A CERTIFICATE OF ATTENDANCE AT A DEPT OF NATURAL RESOURCES APPROVED TRAINING PROGRAM FOR THE CONTROL OF SEDIMENT AND EROSION CONTROL BEFORE BEGINNING THE PROJECT. I ALSO AUTHORIZE PERIODIC ON-SITE INSPECTION BY THE HOWARD SOIL CONSERVATION DISTRICT OF THEIR AUTHORIZED AGENTS AS D.E.M.E.D. NECESSARY.
 SIGNATURE OF DEVELOPER / BUILDER: *[Signature]* DATE: 4/29/88

ENGINEERS CERTIFICATE
 I CERTIFY THAT THIS PLAN FOR EROSION AND SEDIMENT CONTROL REPRESENTS A PRACTICAL AND WORKABLE PLAN BASED ON MY PERSONAL KNOWLEDGE OF SITE CONDITIONS AND THAT IT WAS PREPARED IN ACCORDANCE WITH THE REQUIREMENTS OF THE HOWARD SOIL CONSERVATION DISTRICT.
 SIGNATURE: *[Signature]* DATE: 5/1/88

REVIEWED FOR HOWARD S.C.D. AND MEETS TECHNICAL REQUIREMENTS
 SIGNATURE: *[Signature]* DATE: 5/16/88
 SOIL CONSERVATION SERVICE
 THIS DEVELOPMENT PLAN IS APPROVED FOR SOIL EROSION AND SEDIMENT CONTROL BY THE HOWARD SOIL CONSERVATION DISTRICT
 SIGNATURE: *[Signature]* DATE: 5/18/88

LAND DESIGN ASSOCIATES 718 HIGHWOOD DRIVE BALTIMORE MARYLAND 21212 (301) 323-0805		SCALE 1" = 30'
DESIGNED DRG	TURF VALLEY OVERLOOK SITE DEVELOPMENT & SEDIMENT CONTROL PLAN	DRAWING 2 of 3
DRAWN RCP		JOB NO.
CHECKED SLP	SECTION 2 AREA 1 LOTS 209-228 (20 LOTS)	FILE NO.
DATE 5/2/88	2ND ELECTION DISTRICT HOWARD CO. MARYLAND FOR AWAL T BUILDERS INC. 9031 BALTIMORE NATIONAL PIKE ELLCOTT CITY MD. 21043 (301) 461-1315	

