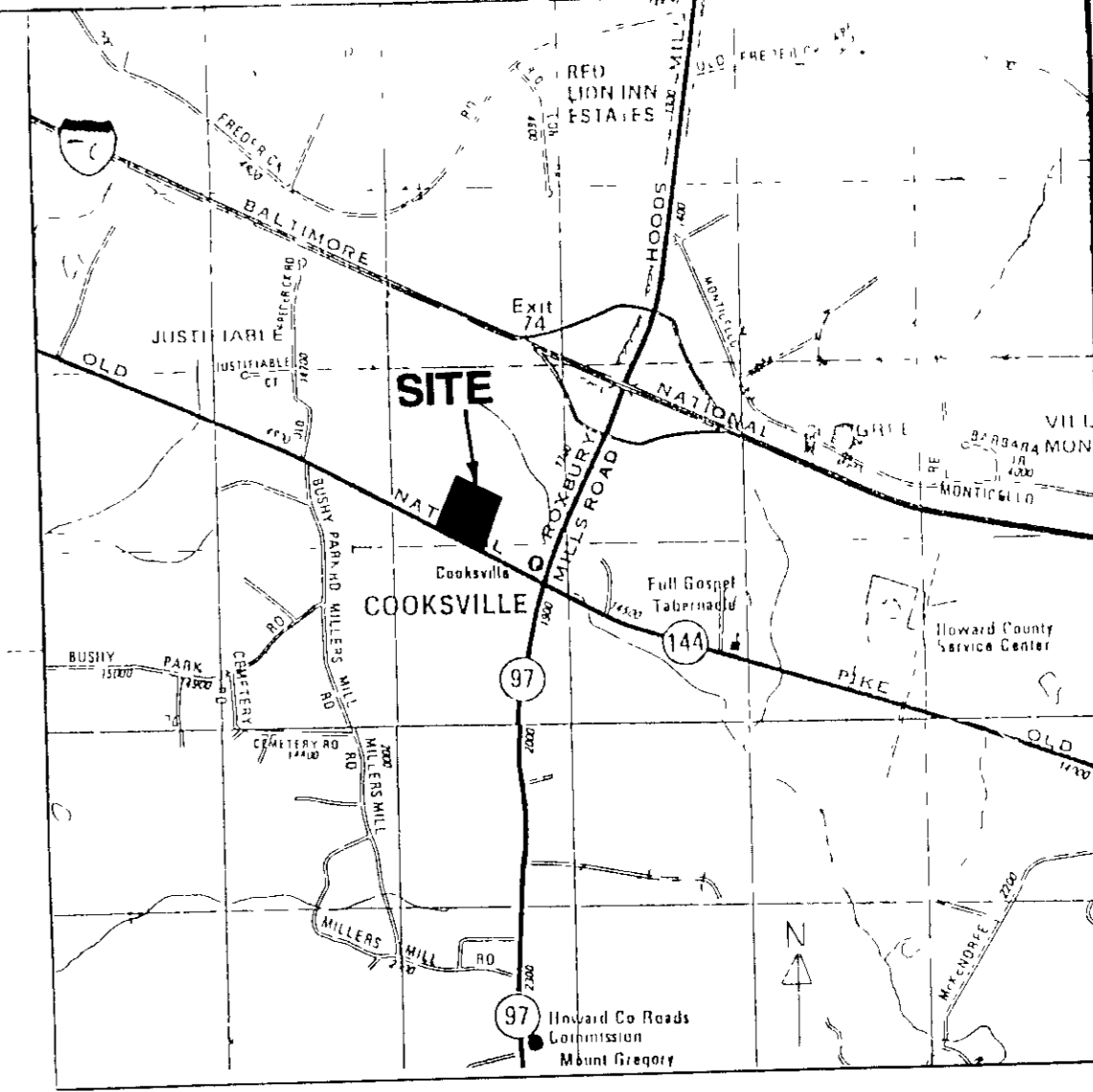


APPROVED  
HOWARD COUNTY  
DATE 2-24-88  
Cam

PLAN APPROVAL STAMP



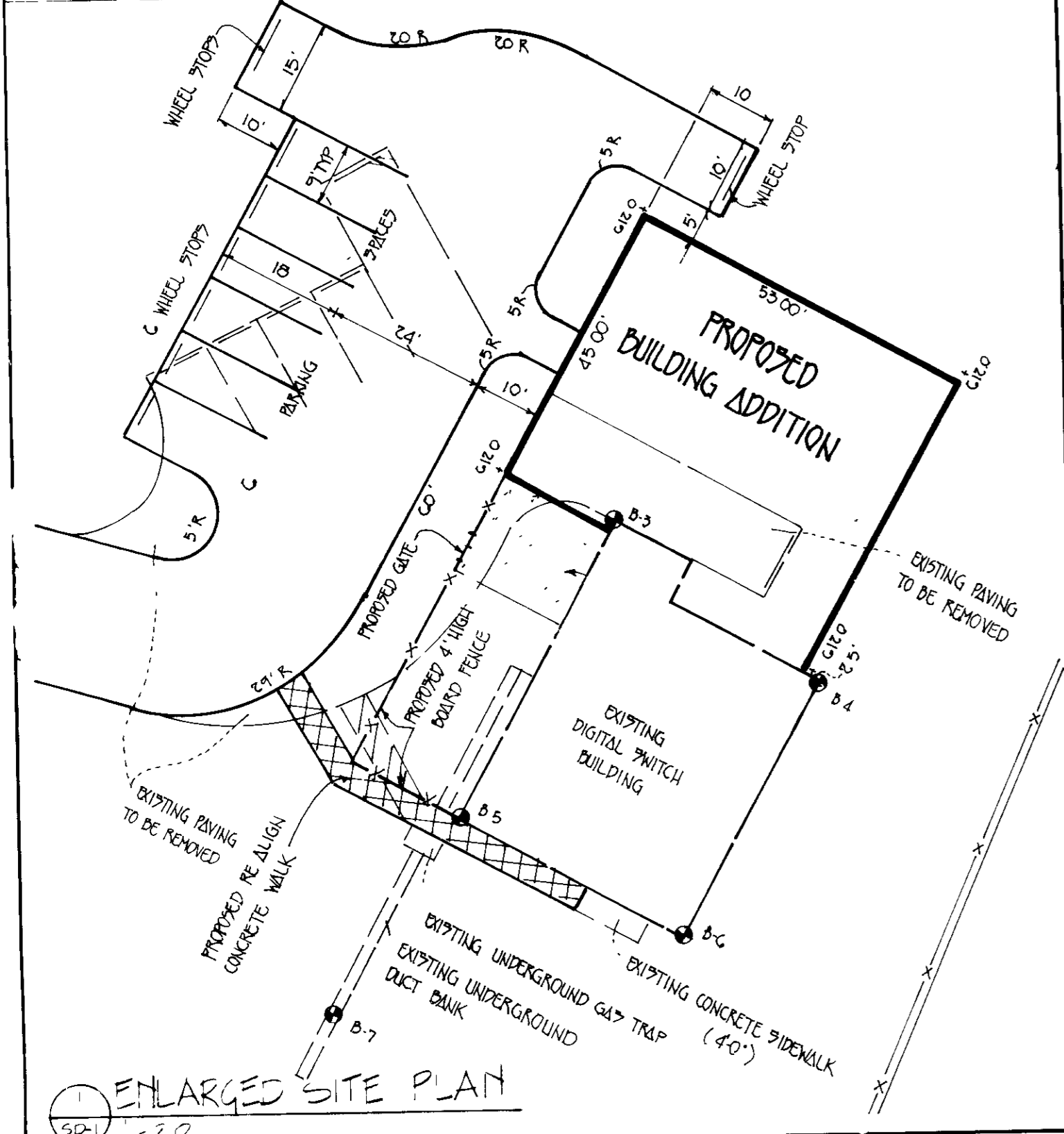
revisions		
no.	date	comments
1	11/9/87	ST. PLAN
2	10/16/88	SUP. COMMENTS
3	9-20-95	REV. BULK PARKING + GEOTECH. NOTES

HAROLD SCHLENGER & ASSOCIATES  
MECHANICAL & ELECTRICAL ENGINEERS  
RICKERT ENGINEERING, INC.  
STRUCTURAL ENGINEERS

Marshall Craft  
6612 York Rd  
Baltimore, Md 21212

- SPECIFICATIONS AND DETAILS - Stormwater management facilities shall be constructed in accordance with the Howard County Department of Public Works Standard Specifications and Details for construction unless otherwise indicated.
- INSPECTION BY DESIGNATED ENGINEER - The construction of all stormwater management facilities shall be under the supervision of a registered Professional Engineer. The Engineer must certify that the facilities have been built in accordance with the plans and submit written certification immediately following the completion of the project.
- TIMING - Runoff shall not be discharged to underground SWM facilities until all upstream drainage areas have been stabilized.
- EROSION CONTROL FACILITIES - All disturbed areas shall be controlled by erosion and sediment control devices in accordance with a plan approved by HCSO.
- CARE OF WATER DURING CONSTRUCTION - All work shall be carried out in areas free from water. The Contractor shall construct and maintain all temporary dikes, berms, and drainage structures necessary to protect the work areas, and shall furnish, operate and maintain all necessary pumping and other equipment required for removal of water from various parts of the work. After having served their purpose, all temporary facilities and equipment shall be removed.
- MATERIALS  
STONE FILL - Stone shall be MSHA 3"-5" as per section 905 01 04.  
FILTER FABRIC - Filter fabric shall be Polyfilter - x or equivalent.  
GABIONS - Shall be in accordance with "Standard Specifications for Construction and Materials" Maryland Department of Transportation State Highway Administration, latest edition section 617, wire baskets shall be as per 911 10 and 911 10 02 PVC coated.
- INSTALLATION  
SITE PREPARATION - Areas shall be cleared of all trees, brush, rubbish and other objectionable material. Cleared materials shall be disposed of as directed by the owner, and in accordance with applicable state and local regulations. Topsoil may be stockpiled for use in stabilizing disturbed areas at the completion of construction.

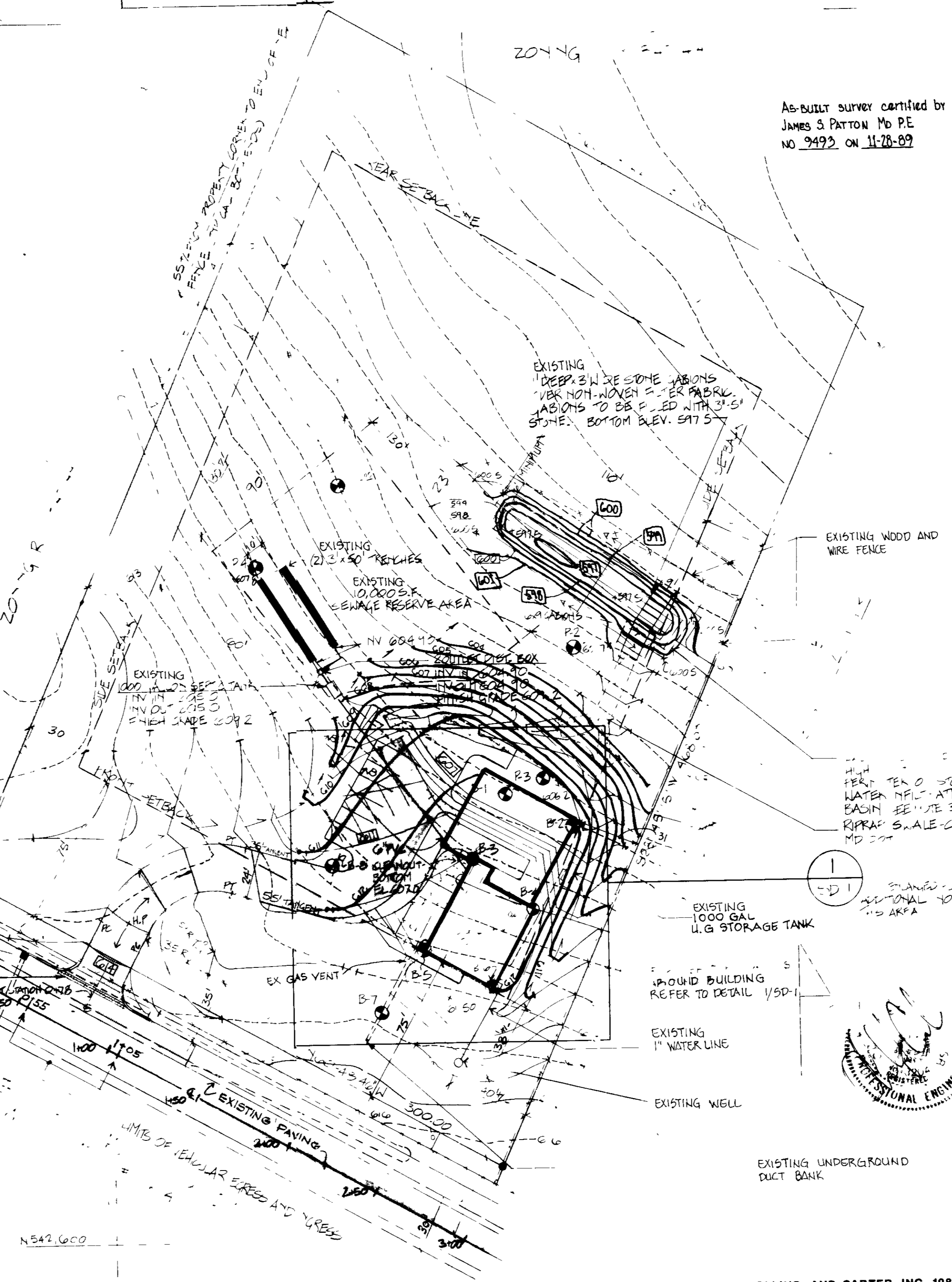
- EXCAVATION - Prepare excavations to design dimensions. Excavated materials shall be placed away from the excavated sides to enhance wall stability. Large tree roots shall be trimmed flush with the sides to prevent fabric tearing or puncturing during subsequent installation procedures. The puncturing during subsequent installation procedures. The side walls of excavations which have been sheared and sealed by excavating equipment shall be roughened before fabric is placed.
- FABRIC LAYDOWN - The filter fabric roll shall be cut to the proper width prior to installation. Fabric shall be placed completely line the bottom of the gabions and to conform to any irregularities in the excavation. Fabric shall be anchored with metal staples or other approved methods where overlaps between two rolls are required, the upstream roll in order to provide a shingle effect. Overlaps on the top of trenches and beds shall be a minimum of 6 inches.
- STONE REPLACEMENT - Stone shall be placed with care to avoid bearing or displacing filter fabric. Stone fill shall be placed in lifts. Maximum loose lift thickness shall be 12 inches.
- CONTAMINATION - Care shall be exercised to prevent natural or fill soils from intermixing with the stone fill. All contaminated stone fill shall be removed and replaced with uncontaminated stone.
- STABILIZATION - All disturbed areas which are not indicated to receive other treatment shall be stabilized by seeding, fertilizing and mulching in accordance with the 1983 Maryland Standards and Specifications for Soil Erosion and Sediment Control, Section 51, Permanent Seeding and the Permanent Seeding Notes on the Sediment Control Plan.
- CONSTRUCTION INSPECTION SCHEDULE  
The stormwater management facilities (and station basin and/or swale) shall be inspected as a minimum, at the following stages of construction:  
1. After completion of excavation and acceptance of permanent seeding and placement of riprap (if a completion of construction)  
2. After completion of all stormwater management facilities shall be inspected every three months and after every major storm during the first year of operation. The water facilities shall be inspected semiannually.
- MAINTENANCE SCHEDULE - All stormwater management facilities shall be inspected every three months and after every major storm during the first year of operation. The water facilities shall be inspected semiannually.
- Obtain existing permit from owner.
  - Notify Howard County, Section 1001.01, at least 48 hours prior to beginning work.
  - Clear for approval and use the control measure of the site and Stormwater Management Facility.
  - Install all sediment and erosion control measures at least 48 hours before beginning work.
  - Notify Howard County, Section 1001.01, upon completion of site work.
  - With the approval of Howard County, Section 1001.01, excavator re-enter the site.
  - Begin acceptance always maintaining positive drainage to the diversion periodically at the end of each work day.
  - Install stone base for roadway and parking area and in temporary parking area.
  - During construction of structures the sediment control measures are maintained especially at the end of each working day.
  - After completion of the building and paving and after notifying and obtaining approval from the technical control inspector, remove sediment traps. At the complete stormwater management basin by excavating bottom 2 feet of earth on final slope to 30% permanent seeding and placement of stone gabions and riprap.
- GENERAL NOTES  
1. BOTH STORMWATER MANAGEMENT FACILITY AND SEDIMENT TRAP WILL BE USED FOR STORMWATER MANAGEMENT DURING THE CONSTRUCTION PHASE. STORMWATER MANAGEMENT BASIN WILL BE EXCAVATED TO 2' ABOVE FINAL ELEVATION FOR USE DURING CONSTRUCTION.



NOTE:  
CONDITIONS OF APPROVAL ON AUGUST 31, 1975 OF BA-75-206 ARE:  
1. THE GRANTED SPECIAL EXCEPTION SHALL APPLY SOLELY TO THE PROPOSED TELEPHONE SWITCHING STATION INDICATED ON THE PLAN SUBMITTED WITH THE PETITION AND THE PROPOSED TOWER HUNDRED TWENTY TWO (THC) SQUARE FOOT ADDITION TO THE STRUCTURE WITHIN TWENTY (20) YEARS OF THE DATE OF THIS DECISION AND ORDER, AND NOT TO ANY OTHER STRUCTURES, ADDITIONS OR USES.  
2. THE EXTENT OF THE PROPOSED ADDITION AND FUTURE EXPANSION SHALL BE CONTINUED OF BRICK TO MATCH THE EXISTING EXTERIOR AS CLOSELY AS POSSIBLE.  
3. ALL EXTERIOR LIGHTING SHALL BE DIRECTED DOWNWARD AND INWARD TO AS NOT TO SHINE OR REFLECT ON ADJACENT PROPERTIES OR ROADS.  
4. THE PETITIONER SHALL INSTALL LANDSCAPING IN ACCORDANCE WITH THE SUBMITTED LANDSCAPING PLAN.  
5. THE PETITIONER SHALL COMPLY WITH ALL APPLICABLE FEDERAL, STATE, COUNTY LAWS AND REGULATIONS.

NOTE: WAIVER HAS BEEN GRANTED BY THE MD DEPT. OF ECONOMIC & COMMUNITY DEVELOPMENT - DIVISION OF USES ADMINISTRATION TO EXEMPT C&P TELEPHONE COMPANY'S DIGITAL SWITCH BUILDINGS FROM REQUIREMENTS OF THE MD STATE HANDICAPPED CODE

DEVELOPED CONDITION BREAKDOWN  
IMPERVIOUS = 7,500 SQ. FT. OR  
LAWN = 7,500 SQ. FT. OR 20,870  
PASTURE = 11,040,750 SQ. FT. LD. AREA OR 60,210



SITE ANALYSIS

- TOTAL AREA OF SITE: 3.153 ACRES - 137,285 SQ. FT.
- PRESERVE ZONING: SPECIAL EXCEPTION FOR TELEPHONE SWITCHING STATION
- FLOOR SPACE: 3,000 SQ. FT.
- MAXIMUM NUMBER OF UNITS ON SITE: 3
- NUMBER OF PARKING SPACES REQUIRED BY HOWARD COUNTY: 6
- NUMBER OF PARKING SPACES PROVIDED: 6
- OPEN SPACE TO REMAIN ON SITE: 2.88 ACRES - 127,278 SQ. FT. AND 93%
- BUILDING COVERAGE OF SITE: 0.27 ACRES - 300 SQ. FT. AND 8.7%
- BY SECTION 127.2.2.23.24. TELEPHONE EXCHANGES REQUIRE ONE (1) SPACE PER TWO (2) EMPLOYEES. THIS EXISTING SWITCHING STATION WILL BE REMOVED EXCEPT FOR MAINTENANCE AND REPAIRS. THE PARKING SPACES WILL BE ADJACENT.

SOIL BORING - SEE GEOTECHNICAL REPORT  
P PERC TEST BORING

PAVING SECTION

SECTION NUMBER	PAVEMENT MATERIALS				
P-1	<table border="1"> <tr> <th>FULL DEPTH BIT CONC. ALTERNATE</th> <th>GRANULAR BASE ALTERNATES</th> </tr> <tr> <td>1" BIT CONC. SURFACE 4" BIT CONC. BASE</td> <td>1" BIT CONC. SURFACE 4" BIT CONC. BASE 4" CRUSHED STONE BASE COURSE OR 4" BASE GRANULATED STABILIZED AGGREGATE BASE COURSE</td> </tr> </table>	FULL DEPTH BIT CONC. ALTERNATE	GRANULAR BASE ALTERNATES	1" BIT CONC. SURFACE 4" BIT CONC. BASE	1" BIT CONC. SURFACE 4" BIT CONC. BASE 4" CRUSHED STONE BASE COURSE OR 4" BASE GRANULATED STABILIZED AGGREGATE BASE COURSE
FULL DEPTH BIT CONC. ALTERNATE	GRANULAR BASE ALTERNATES				
1" BIT CONC. SURFACE 4" BIT CONC. BASE	1" BIT CONC. SURFACE 4" BIT CONC. BASE 4" CRUSHED STONE BASE COURSE OR 4" BASE GRANULATED STABILIZED AGGREGATE BASE COURSE				

Curb and Gutter  
Refer to Howard County Department of Public Works Detail R-3.01 Standard 7" Combination Curb and Gutter

Sidewalk Composition  
4" Mix No. 2 Concrete Surface w/ #4 W/M  
4" Crushed Stone Base Course  
Improved Subgrade

SUBDIVISION NAME: BEAR C&P TELEPHONE COMPANY DIGITAL SWITCH STATION

PLAT: 7705 22 R 10NE TAX/ZONE MAP: 8 ELECT. DIST: A CONDS. TR. 6040

WATER CODE: PRIVATE WELL SEWER CODE: PRIVATE - SEPTIC TANK

ADDRESS CHART

LOT NUMBER	STREET ADDRESS
LOT 1	14700 FREDERICK RD

APPROVED FOR PRIVATE WATER AND PRIVATE SEWERAGE SYSTEMS

HOWARD COUNTY HEALTH DEPARTMENT  
JOHN B. JONES, COUNTY HEALTH OFFICER, DATE 3-24-88

APPROVED: Howard County Office of Planning and Zoning  
Director: [Signature], DATE 4-4-88  
Chief, Division of Community Planning and Land Development: [Signature], DATE 3/31/88

APPROVED For Storm Drainage Systems and Public Roads

HOWARD COUNTY DEPARTMENT OF PUBLIC WORKS  
Director: [Signature], DATE 3/23/88  
Chief, Bureau of Engineering: [Signature], DATE 3/23/88

AS-BUILT 11-28-89

Glenwood Digital Switch Building

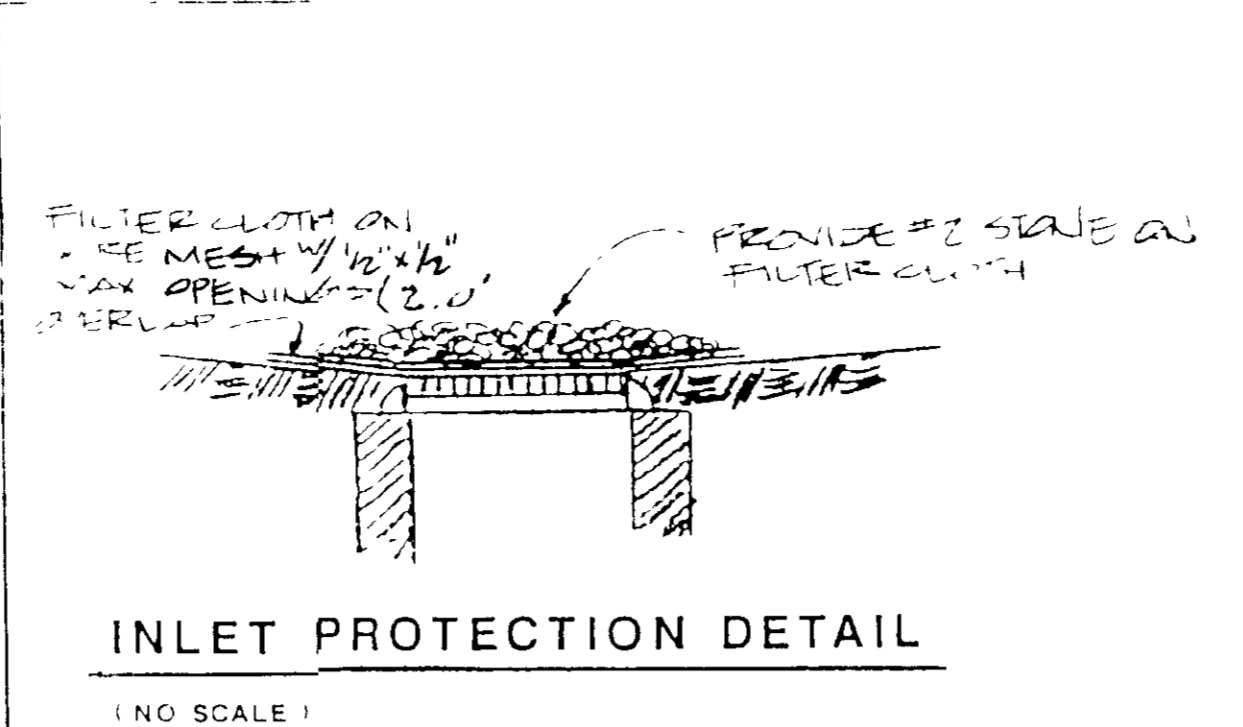
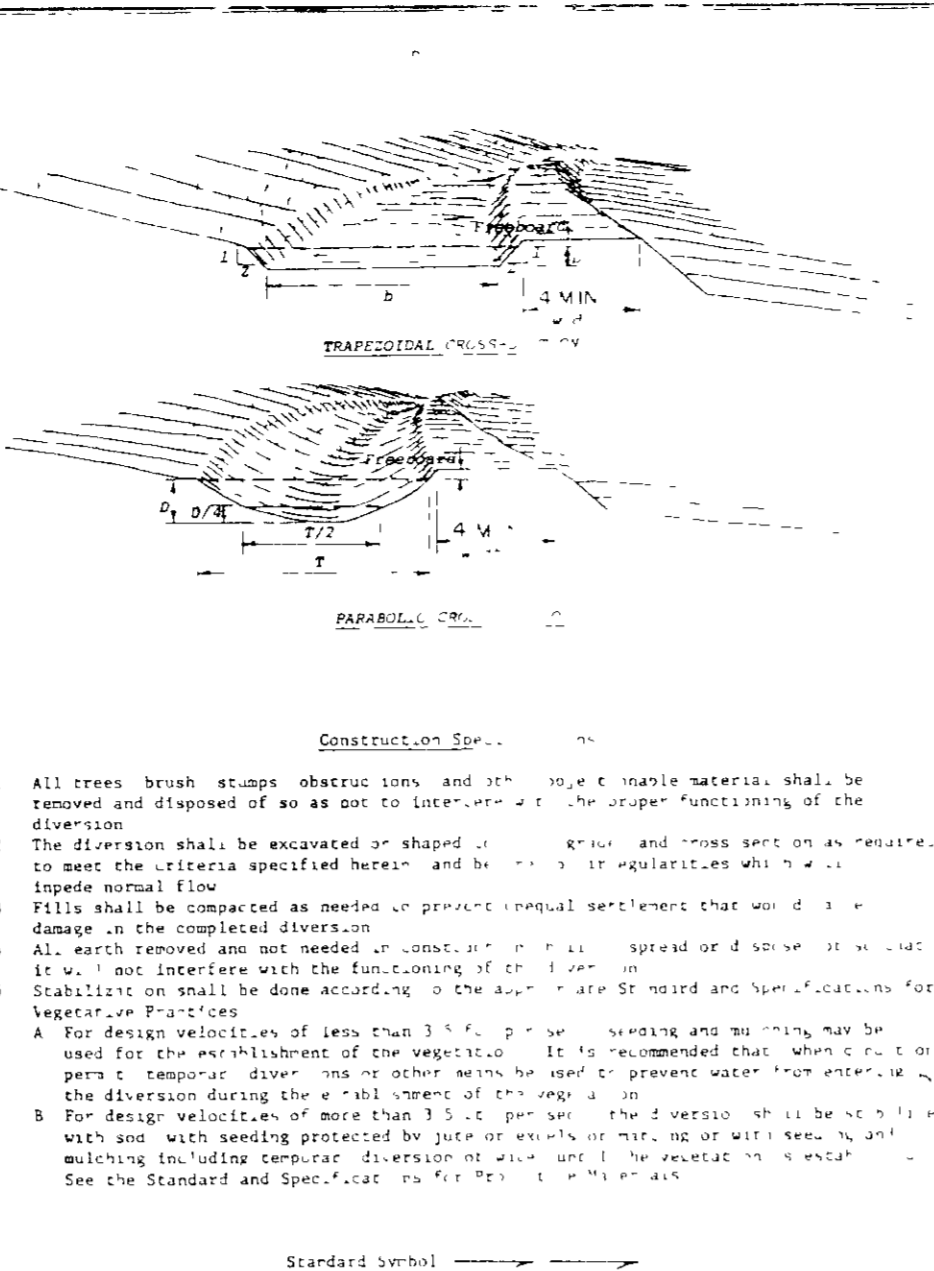
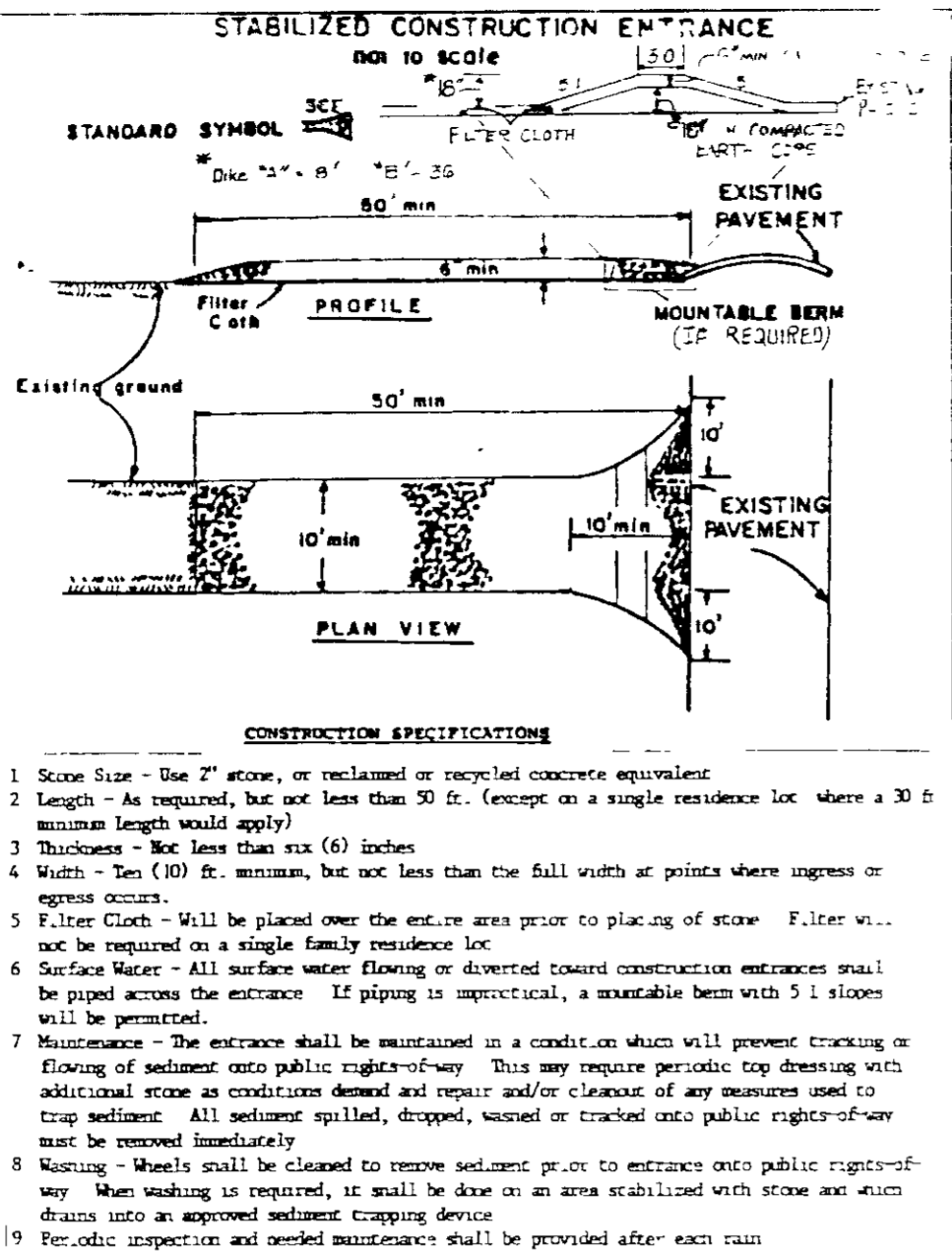
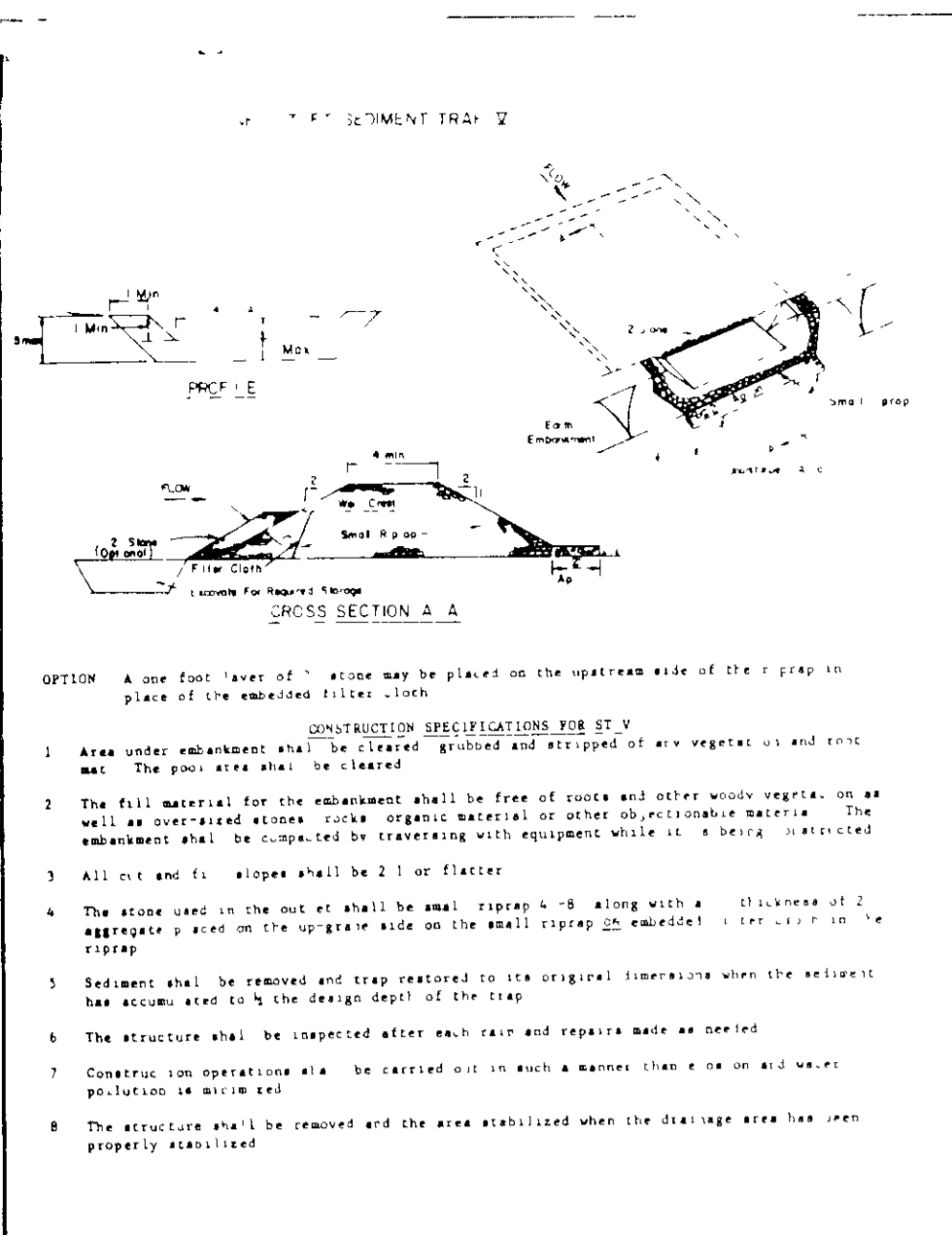
For The C&P Telephone Company of Maryland

Marshall Craft Associates, Inc.  
Baltimore, Maryland

date: 0/23/87  
job no: 875  
scale: 1"=40'

SITE DEVELOPER: [Signature]

© Copyright 1986  
sheet no: SD-1 OF 3  
508 88 115

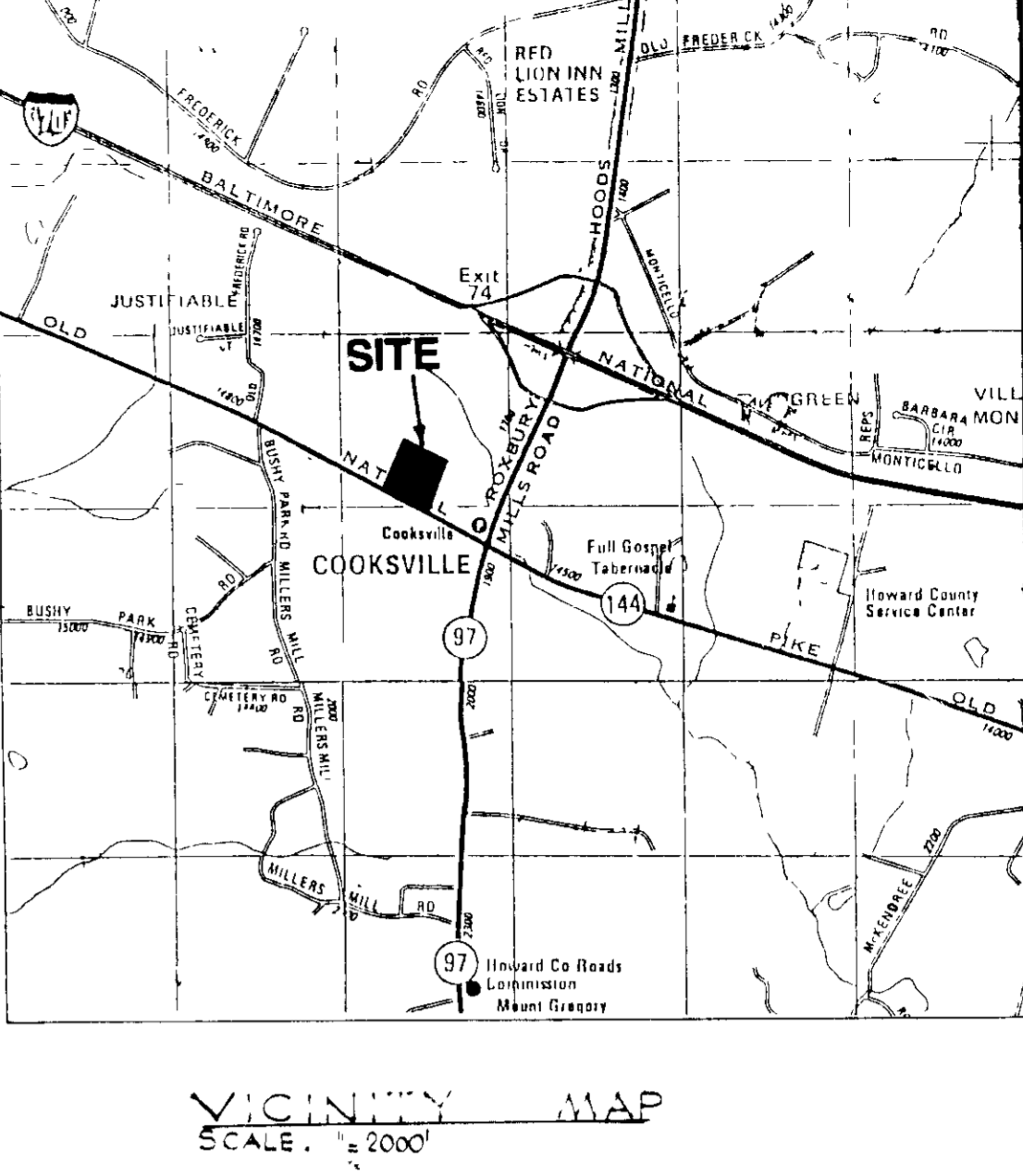


PLAN APPROVAL STAMP

2-24-88

COM

542,000



U.S. DEPARTMENT OF AGRICULTURE SOIL CONSERVATION SERVICE COLLEGE PARK, MARYLAND	STONE OUTLET SEDIMENT TRAP	ST-V
---	----------------------------	------

U.S. DEPARTMENT OF AGRICULTURE SOIL CONSERVATION SERVICE College Park, MD	STABILIZED CONSTRUCTION ENTRANCE	Standard Drawing SC-1
---	----------------------------------	--------------------------

U.S. DEPARTMENT OF AGRICULTURE SOIL CONSERVATION SERVICE College Park, MD	STABILIZED CONSTRUCTION ENTRANCE	Standard Drawing SC-1
---	----------------------------------	--------------------------

**SEDIMENT CONTROL NOTES**

- A minimum of 24 hours notice must be given to the Howard County Office of Inspection and Permitting prior to the start of any construction (992-2437)
- All vegetative and structural practices are to be installed according to the provisions of this plan and are to be in conformance with the 1983 MARYLAND STANDARDS AND SPECIFICATIONS FOR SOIL EROSION AND SEDIMENT CONTROL.
- Following initial soil disturbance or re-disturbance, permanent or temporary stabilization shall be completed within a) 7 calendar days for all perimeter sediment control structures, dikes, perimeter slopes and all slopes greater than 3:1, b) 14 days as to all other disturbed or graded areas on the project site.
- All sediment traps/basins shown must be fenced and warning signs posted around their perimeter in accordance with Vol. 1, Chapter 12, or the HOWARD COUNTY DESIGN MANUAL, Storm Drainage.
- All disturbed areas must be stabilized within the time period specified above in accordance with the 1983 MARYLAND STANDARDS AND SPECIFICATIONS FOR SOIL EROSION AND SEDIMENT CONTROL for permanent seedings (Sec. 51) and (Sec. 54), temporary seeding (Sec. 50) and mulching (Sec. 52). Temporary stabilization with mulch alone can only be done when recommended seeding dates do not allow for proper germination and establishment of grasses.
- All sediment control structures are to remain in place and are to be maintained in operative condition until permission for their removal has been obtained from the Howard County Sediment Control Inspector.
- Site Analysis:  
Total Area of Site: 3.152 Acres ±, 137,345 sq ft ±  
Area Disturbed: 1.082 Acres ±, 46,804 sq ft ±  
Area to be roofed or paved: 0.222 Acres ±, 9,671 sq ft ±  
Area to be vegetatively stabilized: 0.821 Acres ±, 36,634 sq ft ±  
Total Cut: LESS THAN 3,000 Cu. Yds.  
Off-site water/borrow area location: NOT DETERMINED
- Any sediment control practice which is disturbed by grading activity for placement of utilities must be repaired on the same day of disturbance.
- Additional sediment controls must be provided, if deemed necessary by the Howard County DPW sediment control inspector.
- On all sites with disturbed areas in excess of 2 acres, approval of the inspection agency shall be requested upon completion of installer of perimeter erosion and sediment controls, but before proceeding with any other earth disturbance or grading. Other building or grading inspection approvals may not be authorized until this initial approval by the inspection agency is made.

**SEEDING NOTES**

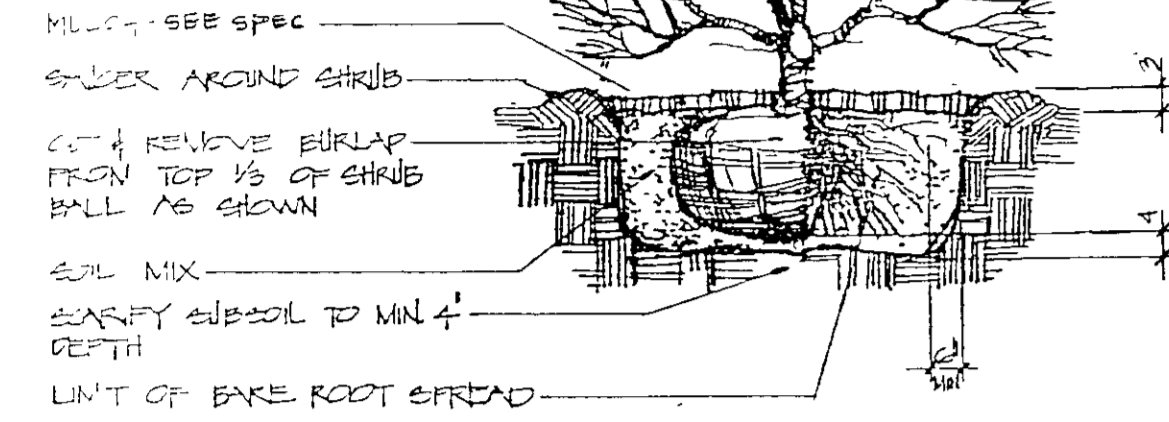
Apply to grades of less than 1:1 slope and subject to the following disturbance areas a permanent cover shall be established:

**Seeded Preparation:** Use three times the amount of soil b. raking, discing or other acceptable means before seeding.

**Soil Amendment:** Apply 100 lbs per acre 10-0-0 fertilizer (10 lbs/1000 sq ft)

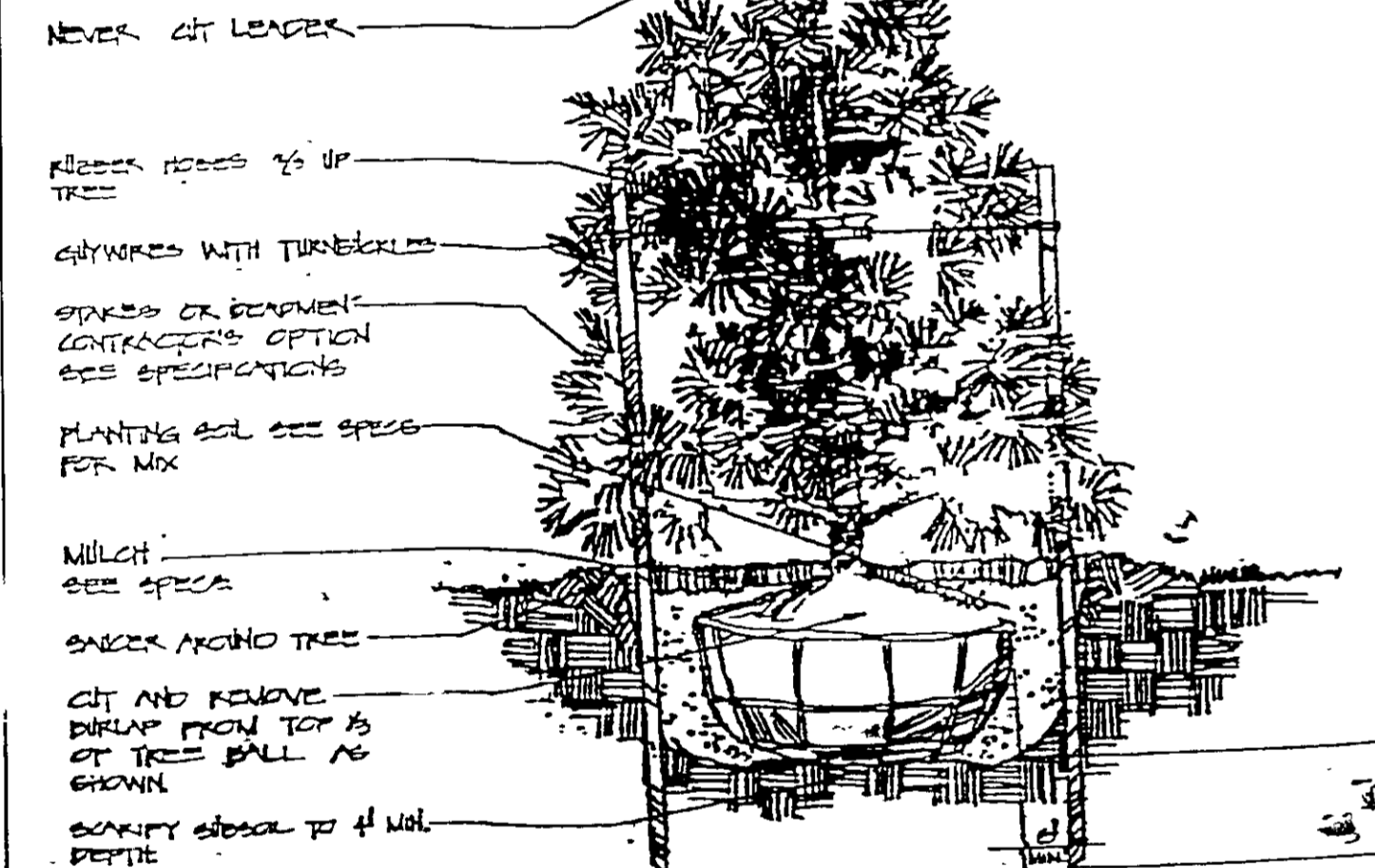
**Seeding:** For periods Nov. 1 thru April 30 and from August 15 thru November 15, seed with 25 lbs/1000 sq ft of annual ryegrass (10 lbs/1000 sq ft) for the period May 1 thru August 15, seed with 1 lb. per acre of weeping lovegrass (10 lbs/1000 sq ft) for the period November 16 thru February 28, protect sites with straw mulch and seed as soon as possible on the site. (2) Use and (3) Use and (4) Use and (5) Use and (6) Use and (7) Use and (8) Use and (9) Use and (10) Use and (11) Use and (12) Use and (13) Use and (14) Use and (15) Use and (16) Use and (17) Use and (18) Use and (19) Use and (20) Use and (21) Use and (22) Use and (23) Use and (24) Use and (25) Use and (26) Use and (27) Use and (28) Use and (29) Use and (30) Use and (31) Use and (32) Use and (33) Use and (34) Use and (35) Use and (36) Use and (37) Use and (38) Use and (39) Use and (40) Use and (41) Use and (42) Use and (43) Use and (44) Use and (45) Use and (46) Use and (47) Use and (48) Use and (49) Use and (50) Use and (51) Use and (52) Use and (53) Use and (54) Use and (55) Use and (56) Use and (57) Use and (58) Use and (59) Use and (60) Use and (61) Use and (62) Use and (63) Use and (64) Use and (65) Use and (66) Use and (67) Use and (68) Use and (69) Use and (70) Use and (71) Use and (72) Use and (73) Use and (74) Use and (75) Use and (76) Use and (77) Use and (78) Use and (79) Use and (80) Use and (81) Use and (82) Use and (83) Use and (84) Use and (85) Use and (86) Use and (87) Use and (88) Use and (89) Use and (90) Use and (91) Use and (92) Use and (93) Use and (94) Use and (95) Use and (96) Use and (97) Use and (98) Use and (99) Use and (100) Use and (101) Use and (102) Use and (103) Use and (104) Use and (105) Use and (106) Use and (107) Use and (108) Use and (109) Use and (110) Use and (111) Use and (112) Use and (113) Use and (114) Use and (115) Use and (116) Use and (117) Use and (118) Use and (119) Use and (120) Use and (121) Use and (122) Use and (123) Use and (124) Use and (125) Use and (126) Use and (127) Use and (128) Use and (129) Use and (130) Use and (131) Use and (132) Use and (133) Use and (134) Use and (135) Use and (136) Use and (137) Use and (138) Use and (139) Use and (140) Use and (141) Use and (142) Use and (143) Use and (144) Use and (145) Use and (146) Use and (147) Use and (148) Use and (149) Use and (150) Use and (151) Use and (152) Use and (153) Use and (154) Use and (155) Use and (156) Use and (157) Use and (158) Use and (159) Use and (160) Use and (161) Use and (162) Use and (163) Use and (164) Use and (165) Use and (166) Use and (167) Use and (168) Use and (169) Use and (170) Use and (171) Use and (172) Use and (173) Use and (174) Use and (175) Use and (176) Use and (177) Use and (178) Use and (179) Use and (180) Use and (181) Use and (182) Use and (183) Use and (184) Use and (185) Use and (186) Use and (187) Use and (188) Use and (189) Use and (190) Use and (191) Use and (192) Use and (193) Use and (194) Use and (195) Use and (196) Use and (197) Use and (198) Use and (199) Use and (200) Use and (201) Use and (202) Use and (203) Use and (204) Use and (205) Use and (206) Use and (207) Use and (208) Use and (209) Use and (210) Use and (211) Use and (212) Use and (213) Use and (214) Use and (215) Use and (216) Use and (217) Use and (218) Use and (219) Use and (220) Use and (221) Use and (222) Use and (223) Use and (224) Use and (225) Use and (226) Use and (227) Use and (228) Use and (229) Use and (230) Use and (231) Use and (232) Use and (233) Use and (234) Use and (235) Use and (236) Use and (237) Use and (238) Use and (239) Use and (240) Use and (241) Use and (242) Use and (243) Use and (244) Use and (245) Use and (246) Use and (247) Use and (248) Use and (249) Use and (250) Use and (251) Use and (252) Use and (253) Use and (254) Use and (255) Use and (256) Use and (257) Use and (258) Use and (259) Use and (260) Use and (261) Use and (262) Use and (263) Use and (264) Use and (265) Use and (266) Use and (267) Use and (268) Use and (269) Use and (270) Use and (271) Use and (272) Use and (273) Use and (274) Use and (275) Use and (276) Use and (277) Use and (278) Use and (279) Use and (280) Use and (281) Use and (282) Use and (283) Use and (284) Use and (285) Use and (286) Use and (287) Use and (288) Use and (289) Use and (290) Use and (291) Use and (292) Use and (293) Use and (294) Use and (295) Use and (296) Use and (297) Use and (298) Use and (299) Use and (300) Use and (301) Use and (302) Use and (303) Use and (304) Use and (305) Use and (306) Use and (307) Use and (308) Use and (309) Use and (310) Use and (311) Use and (312) Use and (313) Use and (314) Use and (315) Use and (316) Use and (317) Use and (318) Use and (319) Use and (320) Use and (321) Use and (322) Use and (323) Use and (324) Use and (325) Use and (326) Use and (327) Use and (328) Use and (329) Use and (330) Use and (331) Use and (332) Use and (333) Use and (334) Use and (335) Use and (336) Use and (337) Use and (338) Use and (339) Use and (340) Use and (341) Use and (342) Use and (343) Use and (344) Use and (345) Use and (346) Use and (347) Use and (348) Use and (349) Use and (350) Use and (351) Use and (352) Use and (353) Use and (354) Use and (355) Use and (356) Use and (357) Use and (358) Use and (359) Use and (360) Use and (361) Use and (362) Use and (363) Use and (364) Use and (365) Use and (366) Use and (367) Use and (368) Use and (369) Use and (370) Use and (371) Use and (372) Use and (373) Use and (374) Use and (375) Use and (376) Use and (377) Use and (378) Use and (379) Use and (380) Use and (381) Use and (382) Use and (383) Use and (384) Use and (385) Use and (386) Use and (387) Use and (388) Use and (389) Use and (390) Use and (391) Use and (392) Use and (393) Use and (394) Use and (395) Use and (396) Use and (397) Use and (398) Use and (399) Use and (400) Use and (401) Use and (402) Use and (403) Use and (404) Use and (405) Use and (406) Use and (407) Use and (408) Use and (409) Use and (410) Use and (411) Use and (412) Use and (413) Use and (414) Use and (415) Use and (416) Use and (417) Use and (418) Use and (419) Use and (420) Use and (421) Use and (422) Use and (423) Use and (424) Use and (425) Use and (426) Use and (427) Use and (428) Use and (429) Use and (430) Use and (431) Use and (432) Use and (433) Use and (434) Use and (435) Use and (436) Use and (437) Use and (438) Use and (439) Use and (440) Use and (441) Use and (442) Use and (443) Use and (444) Use and (445) Use and (446) Use and (447) Use and (448) Use and (449) Use and (450) Use and (451) Use and (452) Use and (453) Use and (454) Use and (455) Use and (456) Use and (457) Use and (458) Use and (459) Use and (460) Use and (461) Use and (462) Use and (463) Use and (464) Use and (465) Use and (466) Use and (467) Use and (468) Use and (469) Use and (470) Use and (471) Use and (472) Use and (473) Use and (474) Use and (475) Use and (476) Use and (477) Use and (478) Use and (479) Use and (480) Use and (481) Use and (482) Use and (483) Use and (484) Use and (485) Use and (486) Use and (487) Use and (488) Use and (489) Use and (490) Use and (491) Use and (492) Use and (493) Use and (494) Use and (495) Use and (496) Use and (497) Use and (498) Use and (499) Use and (500) Use and (501) Use and (502) Use and (503) Use and (504) Use and (505) Use and (506) Use and (507) Use and (508) Use and (509) Use and (510) Use and (511) Use and (512) Use and (513) Use and (514) Use and (515) Use and (516) Use and (517) Use and (518) Use and (519) Use and (520) Use and (521) Use and (522) Use and (523) Use and (524) Use and (525) Use and (526) Use and (527) Use and (528) Use and (529) Use and (530) Use and (531) Use and (532) Use and (533) Use and (534) Use and (535) Use and (536) Use and (537) Use and (538) Use and (539) Use and (540) Use and (541) Use and (542) Use and (543) Use and (544) Use and (545) Use and (546) Use and (547) Use and (548) Use and (549) Use and (550) Use and (551) Use and (552) Use and (553) Use and (554) Use and (555) Use and (556) Use and (557) Use and (558) Use and (559) Use and (560) Use and (561) Use and (562) Use and (563) Use and (564) Use and (565) Use and (566) Use and (567) Use and (568) Use and (569) Use and (570) Use and (571) Use and (572) Use and (573) Use and (574) Use and (575) Use and (576) Use and (577) Use and (578) Use and (579) Use and (580) Use and (581) Use and (582) Use and (583) Use and (584) Use and (585) Use and (586) Use and (587) Use and (588) Use and (589) Use and (590) Use and (591) Use and (592) Use and (593) Use and (594) Use and (595) Use and (596) Use and (597) Use and (598) Use and (599) Use and (600) Use and (601) Use and (602) Use and (603) Use and (604) Use and (605) Use and (606) Use and (607) Use and (608) Use and (609) Use and (610) Use and (611) Use and (612) Use and (613) Use and (614) Use and (615) Use and (616) Use and (617) Use and (618) Use and (619) Use and (620) Use and (621) Use and (622) Use and (623) Use and (624) Use and (625) Use and (626) Use and (627) Use and (628) Use and (629) Use and (630) Use and (631) Use and (632) Use and (633) Use and (634) Use and (635) Use and (636) Use and (637) Use and (638) Use and (639) Use and (640) Use and (641) Use and (642) Use and (643) Use and (644) Use and (645) Use and (646) Use and (647) Use and (648) Use and (649) Use and (650) Use and (651) Use and (652) Use and (653) Use and (654) Use and (655) Use and (656) Use and (657) Use and (658) Use and (659) Use and (660) Use and (661) Use and (662) Use and (663) Use and (664) Use and (665) Use and (666) Use and (667) Use and (668) Use and (669) Use and (670) Use and (671) Use and (672) Use and (673) Use and (674) Use and (675) Use and (676) Use and (677) Use and (678) Use and (679) Use and (680) Use and (681) Use and (682) Use and (683) Use and (684) Use and (685) Use and (686) Use and (687) Use and (688) Use and (689) Use and (690) Use and (691) Use and (692) Use and (693) Use and (694) Use and (695) Use and (696) Use and (697) Use and (698) Use and (699) Use and (700) Use and (701) Use and (702) Use and (703) Use and (704) Use and (705) Use and (706) Use and (707) Use and (708) Use and (709) Use and (710) Use and (711) Use and (712) Use and (713) Use and (714) Use and (715) Use and (716) Use and (717) Use and (718) Use and (719) Use and (720) Use and (721) Use and (722) Use and (723) Use and (724) Use and (725) Use and (726) Use and (727) Use and (728) Use and (729) Use and (730) Use and (731) Use and (732) Use and (733) Use and (734) Use and (735) Use and (736) Use and (737) Use and (738) Use and (739) Use and (740) Use and (741) Use and (742) Use and (743) Use and (744) Use and (745) Use and (746) Use and (747) Use and (748) Use and (749) Use and (750) Use and (751) Use and (752) Use and (753) Use and (754) Use and (755) Use and (756) Use and (757) Use and (758) Use and (759) Use and (760) Use and (761) Use and (762) Use and (763) Use and (764) Use and (765) Use and (766) Use and (767) Use and (768) Use and (769) Use and (770) Use and (771) Use and (772) Use and (773) Use and (774) Use and (775) Use and (776) Use and (777) Use and (778) Use and (779) Use and (780) Use and (781) Use and (782) Use and (783) Use and (784) Use and (785) Use and (786) Use and (787) Use and (788) Use and (789) Use and (790) Use and (791) Use and (792) Use and (793) Use and (794) Use and (795) Use and (796) Use and (797) Use and (798) Use and (799) Use and (800) Use and (801) Use and (802) Use and (803) Use and (804) Use and (805) Use and (806) Use and (807) Use and (808) Use and (809) Use and (810) Use and (811) Use and (812) Use and (813) Use and (814) Use and (815) Use and (816) Use and (817) Use and (818) Use and (819) Use and (820) Use and (821) Use and (822) Use and (823) Use and (824) Use and (825) Use and (826) Use and (827) Use and (828) Use and (829) Use and (830) Use and (831) Use and (832) Use and (833) Use and (834) Use and (835) Use and (836) Use and (837) Use and (838) Use and (839) Use and (840) Use and (841) Use and (842) Use and (843) Use and (844) Use and (845) Use and (846) Use and (847) Use and (848) Use and (849) Use and (850) Use and (851) Use and (852) Use and (853) Use and (854) Use and (855) Use and (856) Use and (857) Use and (858) Use and (859) Use and (860) Use and (861) Use and (862) Use and (863) Use and (864) Use and (865) Use and (866) Use and (867) Use and (868) Use and (869) Use and (870) Use and (871) Use and (872) Use and (873) Use and (874) Use and (875) Use and (876) Use and (877) Use and (878) Use and (879) Use and (880) Use and (881) Use and (882) Use and (883) Use and (884) Use and (885) Use and (886) Use and (887) Use and (888) Use and (889) Use and (890) Use and (891) Use and (892) Use and (893) Use and (894) Use and (895) Use and (896) Use and (897) Use and (898) Use and (899) Use and (900) Use and (901) Use and (902) Use and (903) Use and (904) Use and (905) Use and (906) Use and (907) Use and (908) Use and (909) Use and (910) Use and (911) Use and (912) Use and (913) Use and (914) Use and (915) Use and (916) Use and (917) Use and (918) Use and (919) Use and (920) Use and (921) Use and (922) Use and (923) Use and (924) Use and (925) Use and (926) Use and (927) Use and (928) Use and (929) Use and (930) Use and (931) Use and (932) Use and (933) Use and (934) Use and (935) Use and (936) Use and (937) Use and (938) Use and (939) Use and (940) Use and (941) Use and (942) Use and (943) Use and (944) Use and (945) Use and (946) Use and (947) Use and (948) Use and (949) Use and (950) Use and (951) Use and (952) Use and (953) Use and (954) Use and (955) Use and (956) Use and (957) Use and (958) Use and (959) Use and (960) Use and (961) Use and (962) Use and (963) Use and (964) Use and (965) Use and (966) Use and (967) Use and (968) Use and (969) Use and (970) Use and (971) Use and (972) Use and (973) Use and (974) Use and (975) Use and (976) Use and (977) Use and (978) Use and (979) Use and (980) Use and (981) Use and (982) Use and (983) Use and (984) Use and (985) Use and (986) Use and (987) Use and (988) Use and (989) Use and (990) Use and (991) Use and (992) Use and (993) Use and (994) Use and (995) Use and (996) Use and (997) Use and (998) Use and (999) Use and (1000) Use and (1001) Use and (1002) Use and (1003) Use and (1004) Use and (1005) Use and (1006) Use and (1007) Use and (1008) Use and (1009) Use and (1010) Use and (1011) Use and (1012) Use and (1013) Use and (1014) Use and (1015) Use and (1016) Use and (1017) Use and (1018) Use and (1019) Use and (1020) Use and (1021) Use and (1022) Use and (1023) Use and (1024) Use and (1025) Use and (1026) Use and (1027) Use and (1028) Use and (1029) Use and (1030) Use and (1031) Use and (1032) Use and (1033) Use and (1034) Use and (1035) Use and (1036) Use and (1037) Use and (1038) Use and (1039) Use and (1040) Use and (1041) Use and (1042) Use and (1043) Use and (1044) Use and (1045) Use and (1046) Use and (1047) Use and (1048) Use and (1049) Use and (1050) Use and (1051) Use and (1052) Use and (1053) Use and (1054) Use and (1055) Use and (1056) Use and (1057) Use and (1058) Use and (1059) Use and (1060) Use and (1061) Use and (1062) Use and (1063) Use and (1064) Use and (1065) Use and (1066) Use and (1067) Use and (1068) Use and (1069) Use and (1070) Use and (1071) Use and (1072) Use and (1073) Use and (1074) Use and (1075) Use and (1076) Use and (1077) Use and (1078) Use and (1079) Use and (1080) Use and (1081) Use and (1082) Use and (1083) Use and (1084) Use and (1085) Use and (1086) Use and (1087) Use and (1088) Use and (1089) Use and (1090) Use and (1091) Use and (1092) Use and (1093) Use and (1094) Use and (1095) Use and (1096) Use and (1097) Use and (1098) Use and (1099) Use and (1100) Use and (1101) Use and (1102) Use and (1103) Use and (1104) Use and (1105) Use and (1106) Use and (1107) Use and (1108) Use and (1109) Use and (1110) Use and (1111) Use and (1112) Use and (1113) Use and (1114) Use and (1115) Use and (1116) Use and (1117) Use and (1118) Use and (1119) Use and (1120) Use and (1121) Use and (1122) Use and (1123) Use and (1124) Use and (1125) Use and (1126) Use and (1127) Use and (1128) Use and (1129) Use and (1130) Use and (1131) Use and (1132) Use and (1133) Use and (1134) Use and (1135) Use and (1136) Use and (1137) Use and (1138) Use and (1139) Use and (1140) Use and (1141) Use and (1142) Use and (1143) Use and (1144) Use and (1145) Use and (1146) Use and (1147) Use and (1148) Use and (1149) Use and (1150) Use and (1151) Use and (1152) Use and (1153) Use and (1154) Use and (1155) Use and (1156) Use and (1157) Use and (1158) Use and (1159) Use and (1160) Use and (1161) Use and (1162) Use and (1163) Use and (1164) Use and (1165) Use and (1166) Use and (1167) Use and (1168) Use and (1169) Use and (1170) Use and (1171) Use and (1172) Use and (1173) Use and (1174) Use and (1175) Use and (1176) Use and (1177) Use and (1178) Use and (1179) Use and (1180) Use and (1181) Use and (1182) Use and (1183) Use and (1184) Use and (1185) Use and (1186) Use and (1187) Use and (1188) Use and (1189) Use and (1190) Use and (1191) Use and (1192) Use and (1193) Use and (1194) Use and (1195) Use and (1196) Use and (1197) Use and (1198) Use and (1199) Use and (1200) Use and (1201) Use and (1202) Use and (1203) Use and (1204) Use and (1205) Use and (1206) Use and (1207) Use and (1208) Use and (1209) Use and (1210) Use and (1211) Use and (1212) Use and (1213) Use and (1214) Use and (1215) Use and (1216) Use and (1217) Use and (1218) Use and (1219) Use and (1220) Use and (1221) Use and (1222) Use and (1223) Use and (1224) Use and (1225) Use and (1226) Use and (1227) Use and (1228) Use and (1229) Use and (1230) Use and (1231) Use and (1232) Use and (1233) Use and (1234) Use and (1235) Use and (1236) Use and (1237) Use and (1238) Use and (1239) Use and (1240) Use and (1241) Use and (1242) Use and (1243) Use and (1244) Use and (1245) Use and (1246) Use and (1247) Use and (1248) Use and (1249) Use and (1250) Use and (1251) Use and (1252) Use and (1253) Use and (1254) Use and (1255) Use and (1256) Use and (1257) Use and (1258) Use and (1259) Use and (1260) Use and (1261) Use and (1262) Use and (1263) Use and (1264) Use and (1265) Use and (1266) Use and (1267) Use and (1268) Use and (1269) Use and (1270) Use and (1271) Use and (1272) Use and (1273) Use and (1274) Use and (1275) Use and (1276)

- SHUB SHALL BEAR SAME RELATION TO FINISH GRADE AS IT BORE TO PREVIOUSLY EXISTING GRADE
- THIN BRANCHES AND BRACE (NOT ALL END TIPS) BY 1/2", REMAINING NORMAL PLANT SIZE
- SEE LA TO SPECIFICATIONS FOR MORE INFORMATION



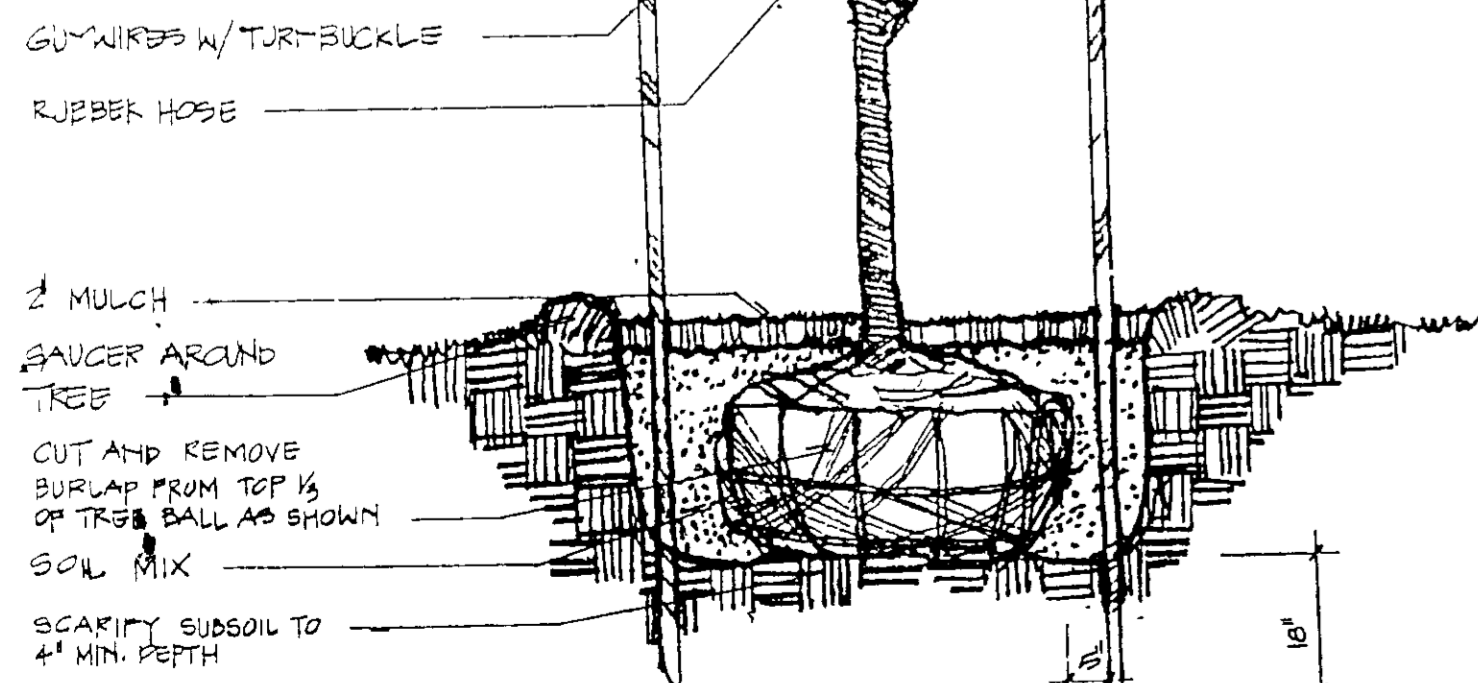
SHRUB DETAIL  
NTS

- TREE SHALL BEAR SAME RELATION TO FINISHED GRADE AS IT BORE TO PREVIOUSLY EXISTING GRADE
- ALL TREES TO BE GUYED, TWO GUYES PER TREE



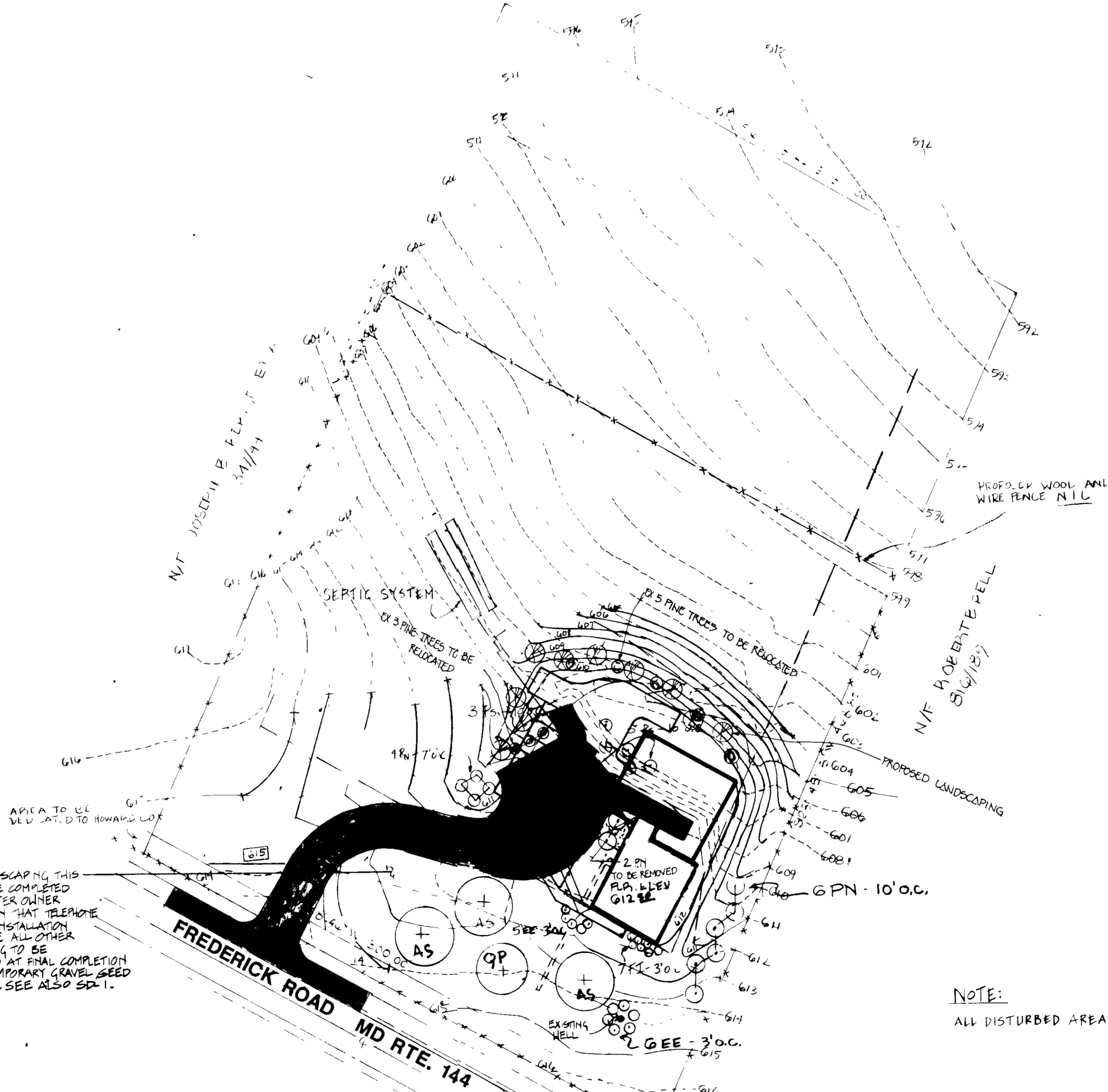
EVERGREEN DETAIL  
NTS

- GUY TREES UP TO 8" CALIFER WITH STAKES
- SEE SPECIFICATIONS FOR ADDITIONAL INFORMATION
- ALL TREES TO BE GUYED, TWO STAKES PER TREE



DECIDUOUS TREE DETAIL  
NTS

FINAL LANDSCAPING THIS AREA TO BE COMPLETED 1 MONTH AFTER OWNER NOTIFICATION THAT TELEPHONE EQUIPMENT INSTALLATION IS COMPLETE. ALL OTHER LANDSCAPING TO BE COMPLETED AT FINAL COMPLETION. REMOVE TEMPORARY GRAVEL SEED AND PLANT. SEE ALSO SPT-1.



DIVISION OF PLANNING AND ZONING  
DATE: 2-24-88  
COM

PROPERTY DATA  
PARCEL NO TAX MAP 8 PARCEL 15B  
PROPERTY NAME BERTHE PROPERTY  
AREA COOKSVILLE  
ELECTION DISTRICT 4TH HOWARD COUNTY, MD  
OWNER'S NAME JOSEPH B BERTHE, ET AL.  
ADDRESS 114 TIMBER COVE  
LONGWOOD, FLORIDA  
CONTRACT PURCHASER C&P TELEPHONE  
1E SPARTAN STREET  
BALTIMORE MARYLAND

NOTE:  
ALL DISTURBED AREA SHALL BE SEEDED IF UNIMPROVED.

APPROVED FOR PRIVATE WATER AND PRIVATE SEWERAGE SYSTEMS  
HOWARD COUNTY HEALTH DEPARTMENT  
JOHN GYR  
COUNTY HEALTH OFFICER  
3-21-88  
DATE

APPROVED: Howard County Office of Planning and Zoning  
Director  
4.4.88  
Date

APPROVED: For Storm Drainage Systems and Public Roads  
Howard County Department of Public Works  
Director  
3/23/88  
Date

KEY	BOTANICAL / COMMON NAME	QUANTITY	SIZE	ROOT	REMARKS
PN	PINUS NUBA AUSTRIAN PINE	12	6'-8" HGT	B4E	
PS	PINUS STROBUS EASTERN WHITE PINE	8	6'-8" HGT	B4B	
EE	EUONYMUS EVYD GREEN EUONYMUS	11	24"-36"	B4B	
FI	POPSYTHIA X INTERMEDIA BORDERI POPSYTHIA	7	24"-36" HGT	B4B	
QP	QUERCUS PALUSTRIS PIN OAK	1	2 1/2'-3" CAL	B4B	
AS	ACEP. SACCHARUM SUGAR MAPLE	3	3"-3 1/2" CALIF	B4B	

revisions

no.	date	comments
1	11/18/87	GENERAL REVISION
2	1/17/88	SDP COMMENTS
3	7-20-88	REV BERTHE - EDDG - GED - LANDSCAPING

HAROLD SCHLENDER & ASSOCIATES  
MECHANICAL & ELECTRICAL ENGINEERS  
RICKERT ENGINEERING, INC  
STRUCTURAL ENGINEERS  
Marshall Craft  
6612 York Rd  
Baltimore, MD 21212



Glenwood Digital Switch Building  
For The C&P Telephone Company of Maryland

Marshall Craft Associates, Inc.

date: 10/23/87  
job no: 8715  
scale: 1" = 40'

LANDSCAPE PLAN

© Copyright 1988  
sheet no: SD-3 OF 3