

SHEET INDEX	
No.	DESCRIPTION
1	TITLE SHEET
2	SITE DEVELOPMENT PLAN
3	DETAILS
4	PROFILES & DETAILS
5	SEDIMENT CONTROL PLAN AND DRAINAGE AREA MAP
6	SEDIMENT CONTROL NOTES & DETAILS
7	PLANTING PLAN

SEE CONTINUATION THIS SHEET

GENERAL NOTES

- ALL WATER LINES SHALL BE CONSTRUCTED A MINIMUM OF 42" COVER BELOW FINISHED GRADE.
- CORRUGATED STEEL PIPE SECTIONS WILL BE JOINED WITH A SINGLE OR TWO PIECE CORRUGATED BAND WITH A WATERTIGHT NEOPRENE GASKET. DIMPLE BAND CONNECTORS WILL NOT BE PERMITTED.
- ALL WORK SHALL BE PERFORMED IN ACCORDANCE WITH THE HOWARD COUNTY DESIGN MANUAL, VOLUME IV, I.E., STANDARD SPECIFICATIONS AND DETAILS FOR CONSTRUCTION.
- APPROXIMATE LOCATION OF EXISTING UTILITIES ARE SHOWN. THE CONTRACTOR SHALL TAKE ALL NECESSARY PRECAUTIONS TO PROTECT THE EXISTING UTILITIES AND MAINTAIN UNINTERRUPTED SERVICE. ANY DAMAGE INCURRED DUE TO CONTRACTOR'S OPERATION SHALL BE REPAIRED IMMEDIATELY AT THE CONTRACTOR'S EXPENSE.
- THE CONTRACTOR SHALL TEST PIT EXISTING UTILITIES, WHERE DIRECTED BY THE ENGINEER, A MINIMUM OF TWO WEEKS IN ADVANCE OF CONSTRUCTION OPERATIONS.
- CONTRACTOR TO NOTIFY THE FOLLOWING UTILITIES OR AGENCIES AT LEAST FIVE DAYS BEFORE STARTING WORK SHOWN ON THESE DRAWINGS:

MISS UTILITY	559-0100
C & P TELEPHONE COMPANY	725-9976
HOWARD COUNTY BUREAU OF UTILITIES	992-2366
AT&T CABLE LOCATION DIVISION	393-3553
BALTIMORE GAS AND ELECTRIC COMPANY	685-0123
STATE HIGHWAY ADMINISTRATION	531-5533
HOWARD COUNTY CONSTRUCTION/INSPECTION SURVEY DIVISION (24 HOURS NOTICE PRIOR TO COMMENCEMENT OF WORK)	792-7272
- ALL INLETS SHALL BE CONSTRUCTED IN ACCORDANCE WITH HOWARD COUNTY STANDARDS.
- ALL PIPE ELEVATIONS SHOWN ARE INVERT ELEVATIONS.
- THE CONTRACTOR SHALL PROVIDE A JOINT IN ALL SEWER MAINS WITHIN 2'-0" OF EXTERIOR MANHOLE WALLS.
- PROFILE STATIONS SHALL BE ADJUSTED AS NECESSARY TO CONFORM TO PLAN DIMENSIONS.
- NO PIPE SHALL BE LAID UNTIL LINES OF EXCAVATION HAVE BEEN BROUGHT TO SUBGRADE.
- TOPO TAKEN FROM FIELD RUN SURVEY DATED JANUARY, 1985 BY TOM TYDINGS & ASSOC.
- ALL PLAN DIMENSIONS ARE TO FACE OF CURB UNLESS OTHERWISE NOTED.
- ALL STORM DRAIN PIPE BEDDING SHALL BE CLASS 'C' AS SHOWN IN FIG. 11.4 IN VOLUME I OF HOWARD COUNTY DESIGN MANUAL UNLESS OTHERWISE DIRECTED BY THE ENGINEER.
- THE DEVELOPER IS RESPONSIBLE FOR THE ACQUISITION OF ALL EASEMENTS, RIGHTS AND/OR RIGHTS-OF-WAY THAT MAY BE REQUIRED FOR THE SEDIMENT AND EROSION CONTROL PRACTICES, STORM WATER MANAGEMENT PRACTICES AND THE DISCHARGE OF STORM WATER ONTO OR ACROSS ADJACENT OR DOWNSTREAM PROPERTIES INCLUDED IN THIS PLAN. HE IS ALSO RESPONSIBLE FOR THE ACQUISITION OF ALL EASEMENTS, RIGHTS AND/OR RIGHTS-OF-WAY THAT MAY BE REQUIRED FOR GARDING AND/OR WORK ON ADJACENT PROPERTIES INCLUDED IN THIS PLAN.
- THE STORM WATER MANAGEMENT FOR THIS PROJECT WAS PROVIDED UNDER CONTRACT F-75-57

SITE TABULATION

Zoning	M-2
Total Area	8.547 Acres (372,307 sf)
Building Coverage	150,000 sf (40.3%)
Parking:	
Building = 150,000 sf gross area	
15% Office = 22,500 sf + 150 sf/employee = 150 employees	
@ 7 spaces/10 employees	= 105 spaces
Warehouse Use = 5 tenants/25 employees per tenant = 125 employees	
@ 1 space/2 employees	= 63 spaces
Total Required Parking	170 spaces
Total Parking Provided (includes 7 handicapped spaces)	177 spaces
Open Space Required (20%)	74,462 sf
Open Space Provided (23.2%)	86,416 sf

Proposed Building will be a Single-Story Structure.

MORRIS & RITCHIE ASSOCIATES, INC.
ENGINEERS, PLANNERS, SURVEYORS AND LANDSCAPE ARCHITECTS
14200 PARK CENTER DRIVE - LAUREL, MD 20707
(410) 702-8702 / (301) 776-6800 FAX: (410) 702-7208

COPYRIGHT MORRIS & RITCHIE ASSOCIATES, INC.

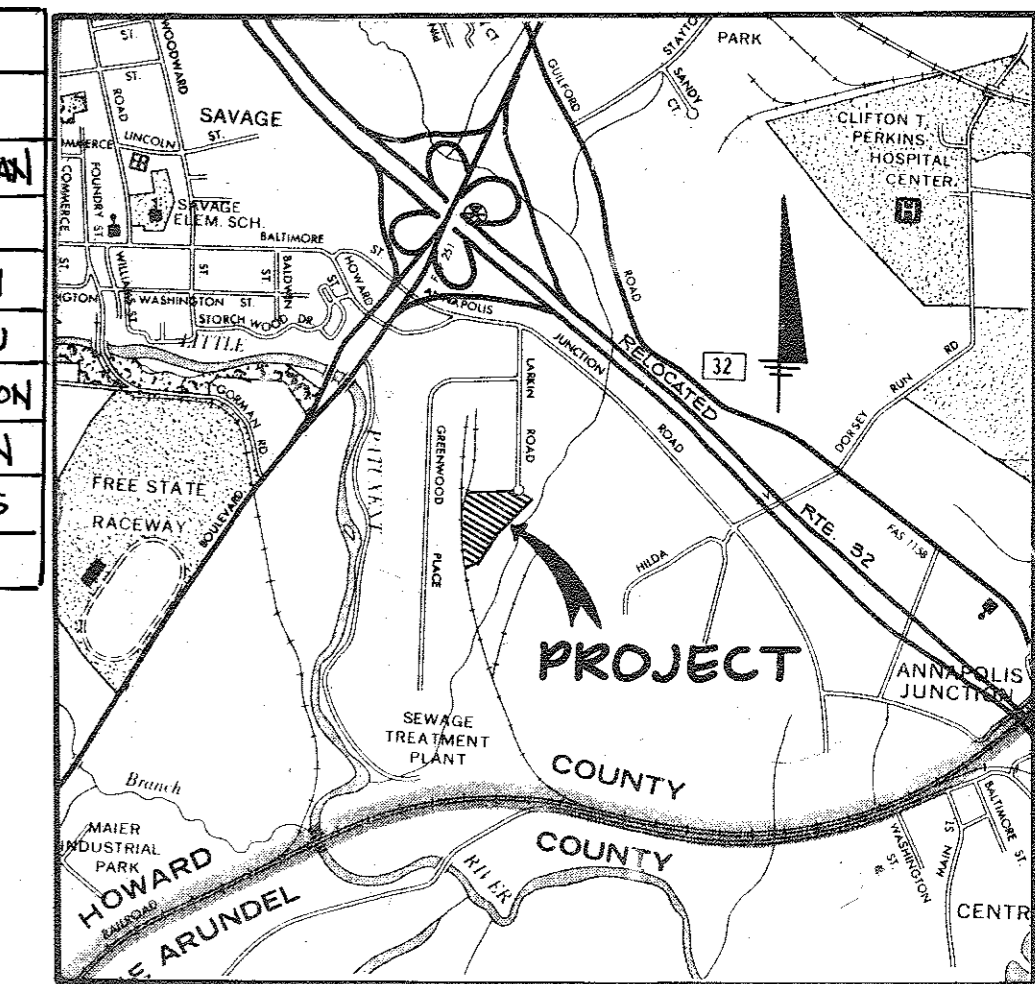
FOR REVISION 3

NO PROFESSIONAL CERTIFICATION
I HEREBY CERTIFY THAT THESE DOCUMENTS WERE PREPARED OR APPROVED BY ME AND THAT I AM A DULY LICENSED PROFESSIONAL ENGINEER UNDER THE LAWS OF THE STATE OF MARYLAND.
LICENSE NO.: 29203
EXPIRATION DATE: 6-16-17

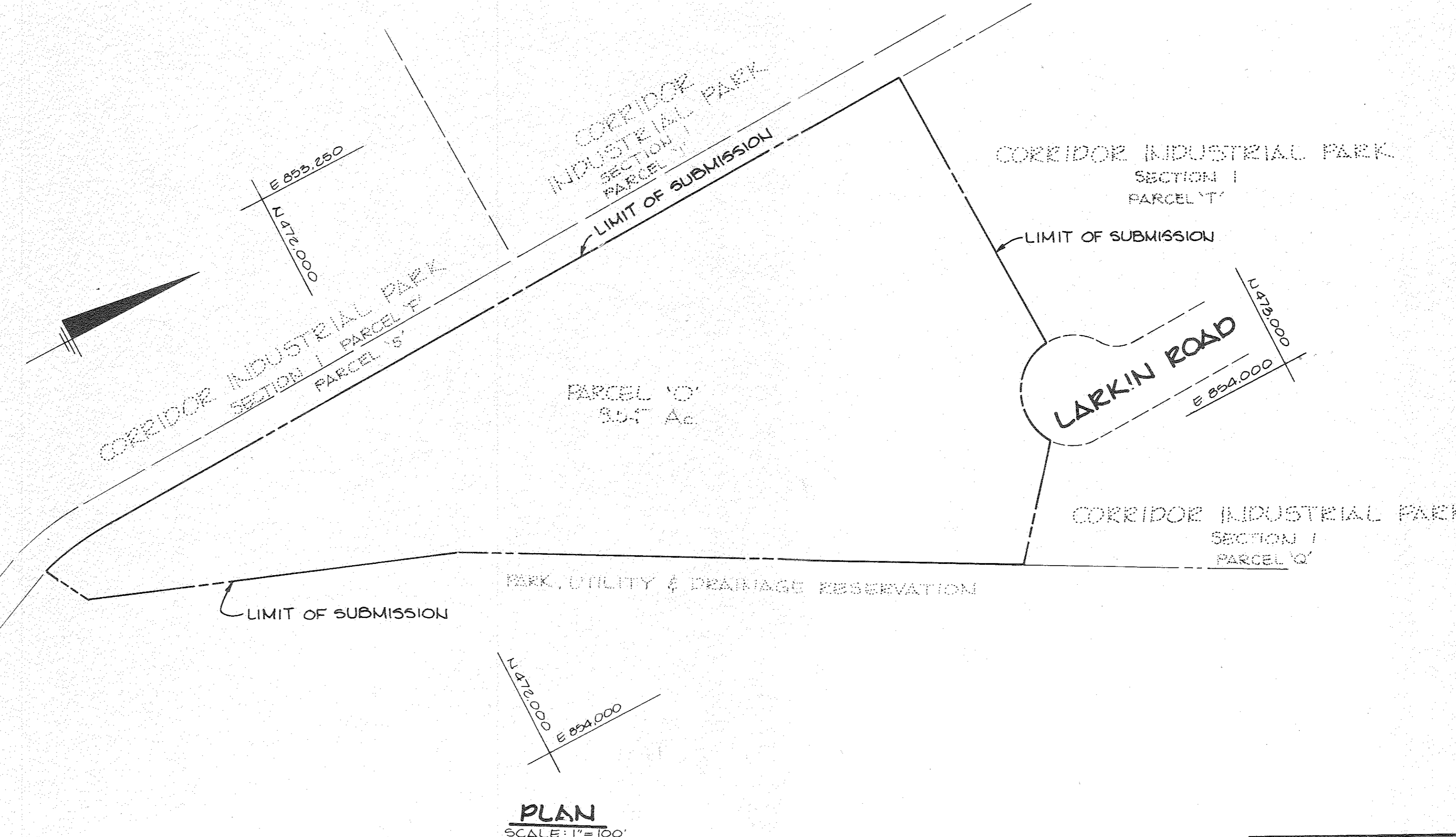
2-10-17

SITE DEVELOPMENT PLAN PARCEL O CORRIDOR INDUSTRIAL PARK SECTION ONE 6TH ELECTION DISTRICT HOWARD COUNTY, MARYLAND

SHEET INDEX	
SHEET NO.	TITLE
8	RETAINING WALL LOCATION PLAN AND SED. CONTROL PLAN
9	RETAINING WALL NO. 1A PLAN, PROFILE, AND SECTION
10	RETAINING WALL NO. 2A PLAN, PROFILE, AND SECTION
11	RETAINING WALL NO. 3A PLAN, PROFILE, AND SECTION
12	RETAINING WALL NO. 4A PLAN, PROFILE, AND SECTION
13	RETAINING WALL NO. 4B PLAN, PROFILE, AND SECTION
14	RETAINING WALL NO. 4B SECTION, PLAN, AND DETAILS
15	SEDIMENT CONTROL DETAILS AND BORING LOGS



VICINITY MAP
SCALE: 1" = 2000'



PLAN
SCALE: 1" = 100'

ADDRESS CHART	
PARCEL NUMBER	STREET ADDRESS
PARCEL O	8750 LARKIN ROAD

SUBDIVISION NAME	SECT./BLK.	PARCEL #
CORRIDOR INDUSTRIAL PARK	SECTION 1	PARCEL O

PLAT # OF L/F BLOCK #	ZONE	PAV/USE PRP	ELSE, DIST.	CONDS TR.
PLAT BOOK 51	M-2	47	6	6064

WATER CODE	SEWER CODE
004	4020000

APPROVED
DIVISION OF LAND DEVELOPMENT & ZONING ADMINISTRATION
HOWARD COUNTY, MARYLAND
DATE 4-9-87

APPROVED: FOR PUBLIC WATER AND PUBLIC SEWERAGE SYSTEMS, HOWARD COUNTY HEALTH DEPARTMENT.
James E. Gyles 5-1-87
COUNTY HEALTH OFFICER DATE

APPROVED: HOWARD COUNTY OFFICE OF PLANNING AND ZONING.
Thomas J. Amick 5-8-87
PLANNING DIRECTOR DATE
John W. Meehan 5-8-87
CHIEF, DIVISION OF LAND DEVELOPMENT AND ZONING ADMINISTRATION DATE

APPROVED: FOR PUBLIC WATER, PUBLIC SEWERAGE, STORM DRAINAGE SYSTEMS AND PUBLIC ROADS.
HOWARD COUNTY DEPARTMENT OF PUBLIC WORKS
Gregory F. Nunn 5-6-87
DIRECTOR DATE
William E. Ryan 5-6-87
CHIEF, BUREAU OF ENGINEERING DATE

1/17 3 REPLACED RETAINING WALL NOS. 1, 2, 3, AND 4 WITH RETAINING WALL NOS. 1A, 2A, 3A, 4A AND 4B
DATE NO REVISION
OWNER / DEVELOPER
CRYSEN CORRIDOR LIMITED PARTNERSHIP
710 AMERICAN CITY BUILDING
COLUMBIA, MARYLAND 21045

PROJECT
CORRIDOR INDUSTRIAL PARK SECTION I PARCEL O
AREA TAX MAP NO. 47 PARCEL O
REVISION OF S.D.P. 85-152 CORRIDOR INDUSTRIAL PARK 6TH ELECTION DISTRICT HOWARD COUNTY, MARYLAND

TITLE SHEET

THE RIEMER GROUP, INC.
The Riemer Group, Inc. A Land Planning, Design & Civil Engineering Firm
3105 Health Park Drive, Ellicott City, Maryland 21043 (301) 461-2690

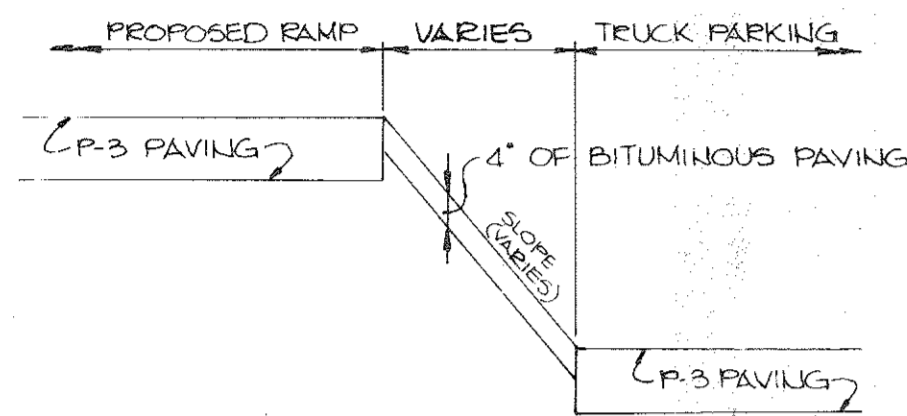
4-21-87 DATE
DESIGNED BY: L.J.D.
DRAWN BY: P.E.R.
PROJECT NO: 15900
DATE: 3/26/85
SCALE: AS SHOWN
DRAWING NO. 1 OF 15

NORTHWEST ELEVATION
SCALE: 1" = 40'

STRUCTURE SCHEDULE

NO.	TYPE	LOCATION	INV/IN	INV/OUT	ELEV.	T.C.	REMARKS
1-1	'S' COMB. INLET	SEE PLAN	144.84	144.64	158.6	Ho.Co.Std. SD 4.32	
1-2	'K' INLET	SEE PLAN	147.14	146.04	*158.0	Ho.Co.Std. SD 4.12	
1-3	'K' INLET	SEE PLAN	151.73	151.63	*159.68	Ho.Co.Std. SD 4.12	
1-4	'A-10' INLET	SEE PLAN	---	147.05	154.6	Ho.Co.Std. SD 4.02	
E-1	30" CONCRETE END SECTION	SEE PLAN	---	135.90	---	Ho.Co.Std. SD 5.51	
E-2	15" CONCRETE END SECTION	SEE PLAN	---	136.50	---	Ho.Co.Std. SD 5.51	
M-1	5'-0" DIAMETER MANHOLE	SEE PLAN	136.28	136.08	*141.8	Ho.Co.Std. G 5.13	
M-2	5'-0" DIAMETER MANHOLE	SEE PLAN	146.18	145.98	*160.36	Ho.Co.Std. G 5.13	
M-3	5'-0" DIAMETER MANHOLE	SEE PLAN	150.30	149.72	160.61	Ho.Co.Std. G 5.13	
I-5	'K' INLET	SEE PLAN	159.40	152.35	*159.71	Ho.Co.Std. SD-412	
M-5	4'-0" DIAMETER MANHOLE	SEE PLAN	139.46	139.21	*145.5	Ho.Co.Std. G 5.12	

* ELEVATIONS AT RIM OR TOP OF GRATE.
 ** ELEVATIONS AT SWALE INVERT



SECTION A-A
NO SCALE

MORRIS & RITCHIE ASSOCIATES, INC.
 ENGINEERS, PLANNERS, SURVEYORS
 AND LANDSCAPE ARCHITECTS
 1420 PARK CENTER DRIVE - LAUREL, MD 20707
 (410) 766-0192 (301) 776-1888 FAX (410) 766-7395
 MR@MRA.COM

MORRIS & RITCHIE ASSOCIATES, INC.
 NO PROFESSIONAL CERTIFICATION
 I HEREBY CERTIFY THAT THESE
 DOCUMENTS WERE PREPARED OR
 APPROVED BY ME, AND THAT I AM A
 DULY LICENSED PROFESSIONAL
 ENGINEER UNDER THE LAWS OF THE
 STATE OF MARYLAND,
 LICENSE NO. 28723
 EXPIRATION DATE: 6-16-17

FOR REVIEW 3

CORRIDOR INDUSTRIAL PARK
 SECTION I
 PARCEL K
 PB 31, FIG
 EX. ZONING M-2

CORRIDOR INDUSTRIAL PARK
 SECTION I
 PARCEL I
 PLAT NO. 3910
 EX. ZONING M-2

CORRIDOR INDUSTRIAL PARK
 SECTION I
 PARCEL G-1
 PLAT NO. 4913
 EX. ZONING M-2

APPROVED: FOR PUBLIC WATER AND PUBLIC SEWERAGE SYSTEMS, HOWARD COUNTY HEALTH DEPARTMENT.

Joyce Boyle 5-7-87
 COUNTY HEALTH OFFICER DATE

APPROVED: HOWARD COUNTY OFFICE OF PLANNING AND ZONING.

Thomas L. Smith 5-8-87
 PLANNING DIRECTOR DATE

John W. Mueggel 5-8-87
 CHIEF, DIVISION OF LAND DEVELOPMENT AND ZONING ADMINISTRATION DATE

APPROVED: FOR PUBLIC WATER, PUBLIC SEWERAGE, STORM DRAINAGE SYSTEMS AND PUBLIC ROADS.

HOWARD COUNTY DEPARTMENT OF PUBLIC WORKS

Steve E. Nemy 5-6-87
 DIRECTOR DATE

William S. Ryan 5-6-87
 CHIEF, BUREAU OF ENGINEERING DATE

1/17 **REPLACED RETAINING WALL NOS. 1, 2, 3, AND 4 WITH RETAINING WALL NOS. 1A, 2A, 3A, 4A AND 4B**

OWNER/DEVELOPER
 CRYSEN CORRIDOR LIMITED PARTNERSHIP
 710 AMERICAN CITY BUILDING
 COLUMBIA, MARYLAND 21045

PROJECT
CORRIDOR INDUSTRIAL PARK SECTION I PARCEL O

AREA COVERED BY SDP: 85158 TAX MAP NO. 47 6TH ELECTION DISTRICT HOWARD COUNTY, MARYLAND

TITLE
SITE DEVELOPMENT PLAN

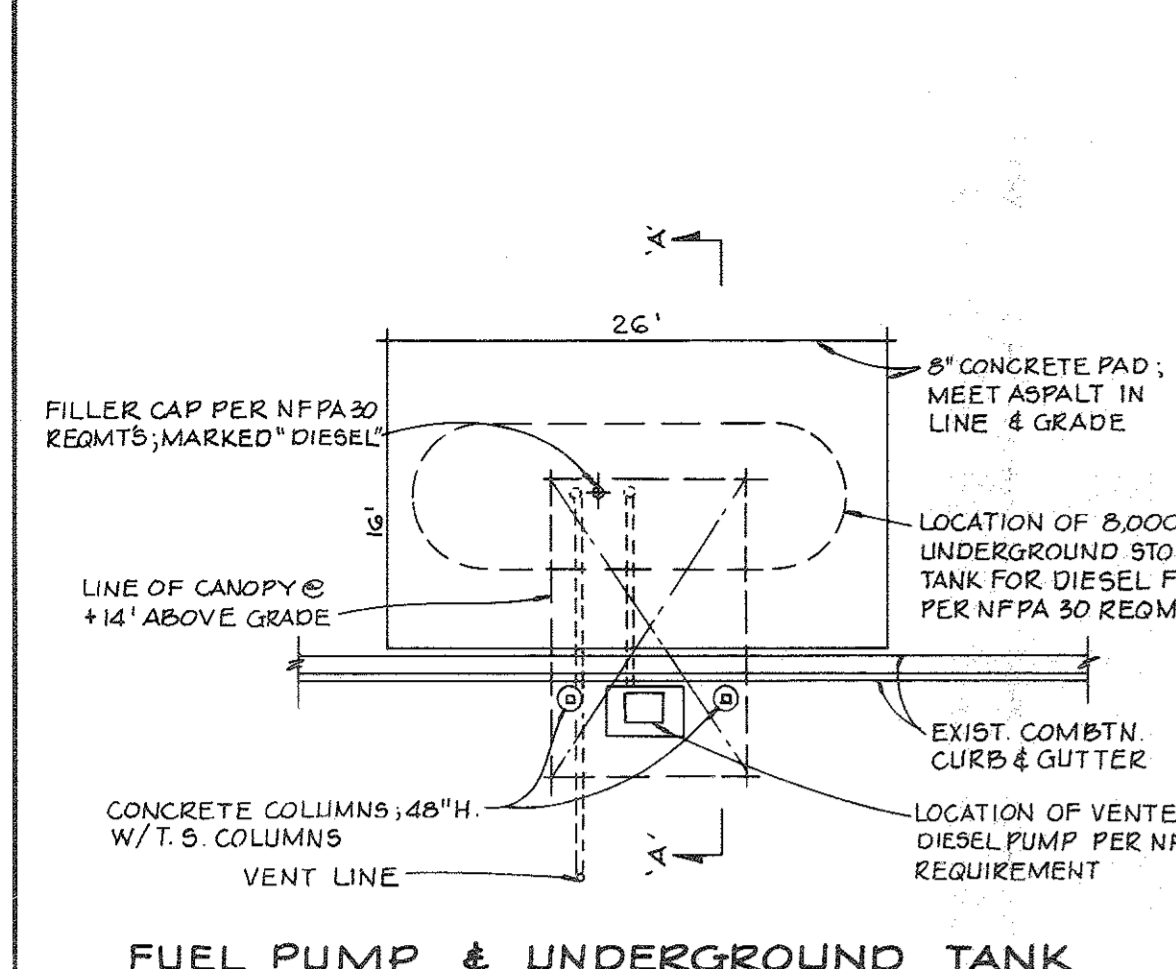
THE RIEMER GROUP, INC.
 A LAND PLANNING, DESIGN & CIVIL ENGINEERING FIRM
 13105 HEALTH PARK DRIVE, ELLICOTT CITY, MD. 21043 301 461-2699

4-21-87 DATE
 DESIGNED BY: L.J.D.
 DRAWN BY: D.A.M.
 PROJECT NO: 15900
 DATE: 3/20/85
 SCALE: 1" = 40'
 DRAWING NO. 2 OF 15

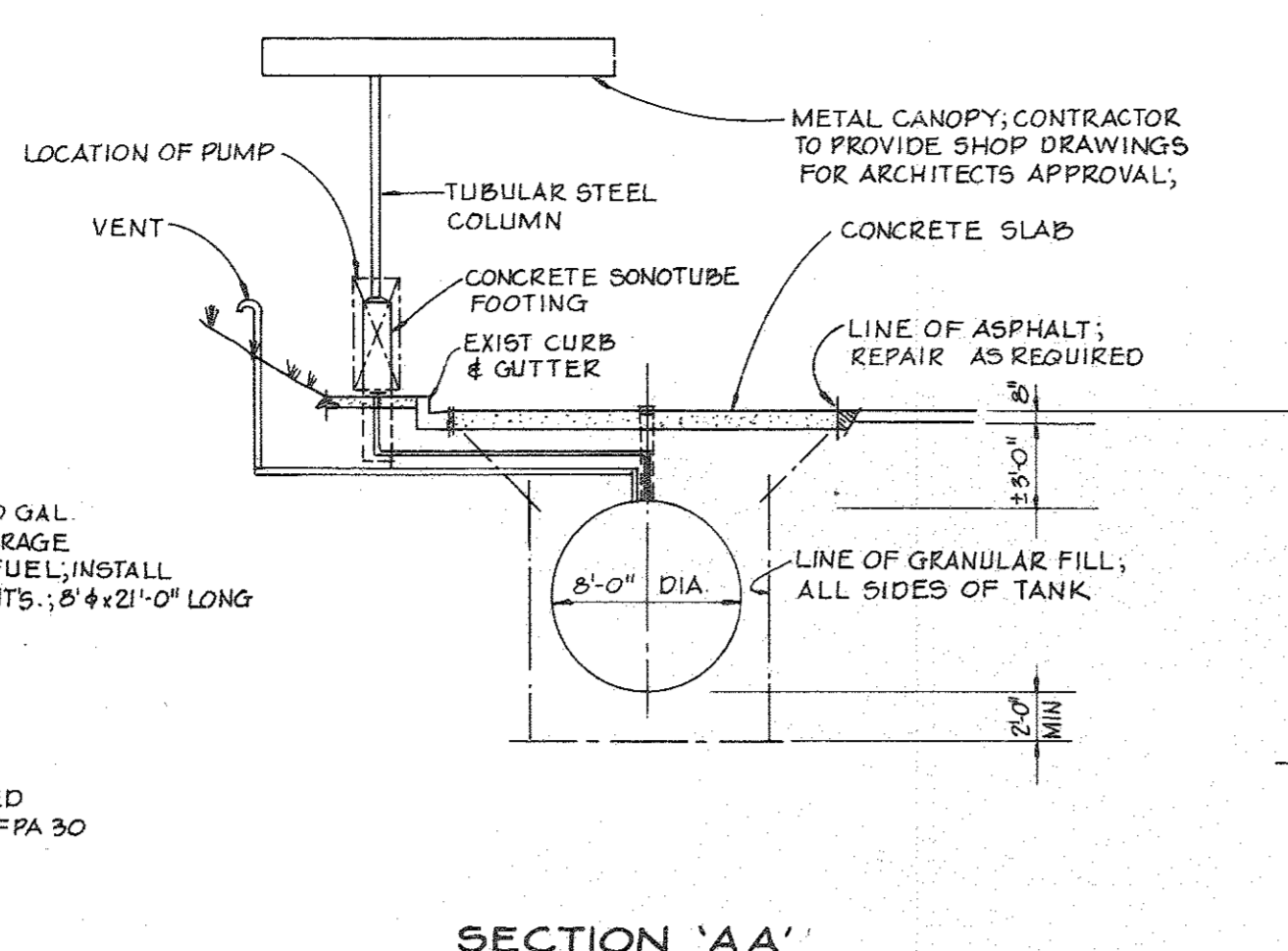
APPROVED
 DIVISION OF LAND DEVELOPMENT & ZONING ADMINISTRATION
 HOWARD COUNTY, MARYLAND
 DATE 4-9-87
Arthur E. Mueggel

NOTES
 1 ALL CURB RADII ARE 5' UNLESS OTHERWISE NOTED
 2 DETAILS FOR RETAINING WALLS ARE TO BE INCLUDED IN THE ARCHITECTURAL DRAWINGS

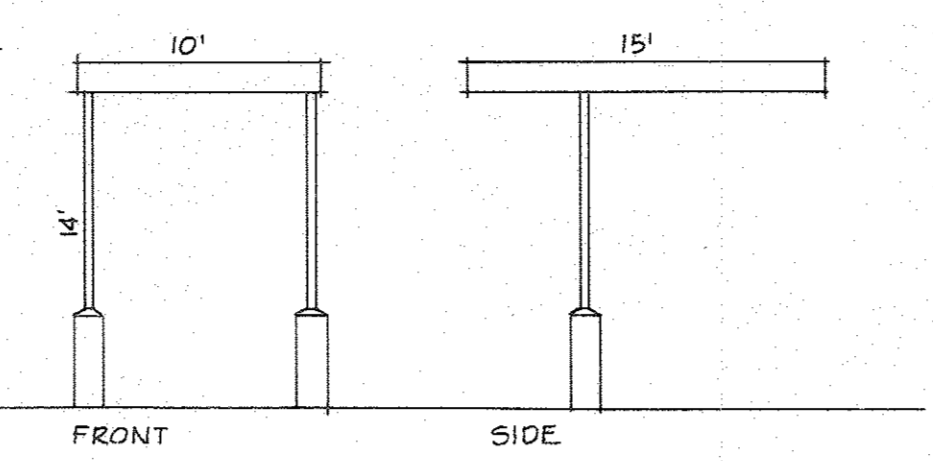
SEE PROPOSED WALLS ON SHEET 8



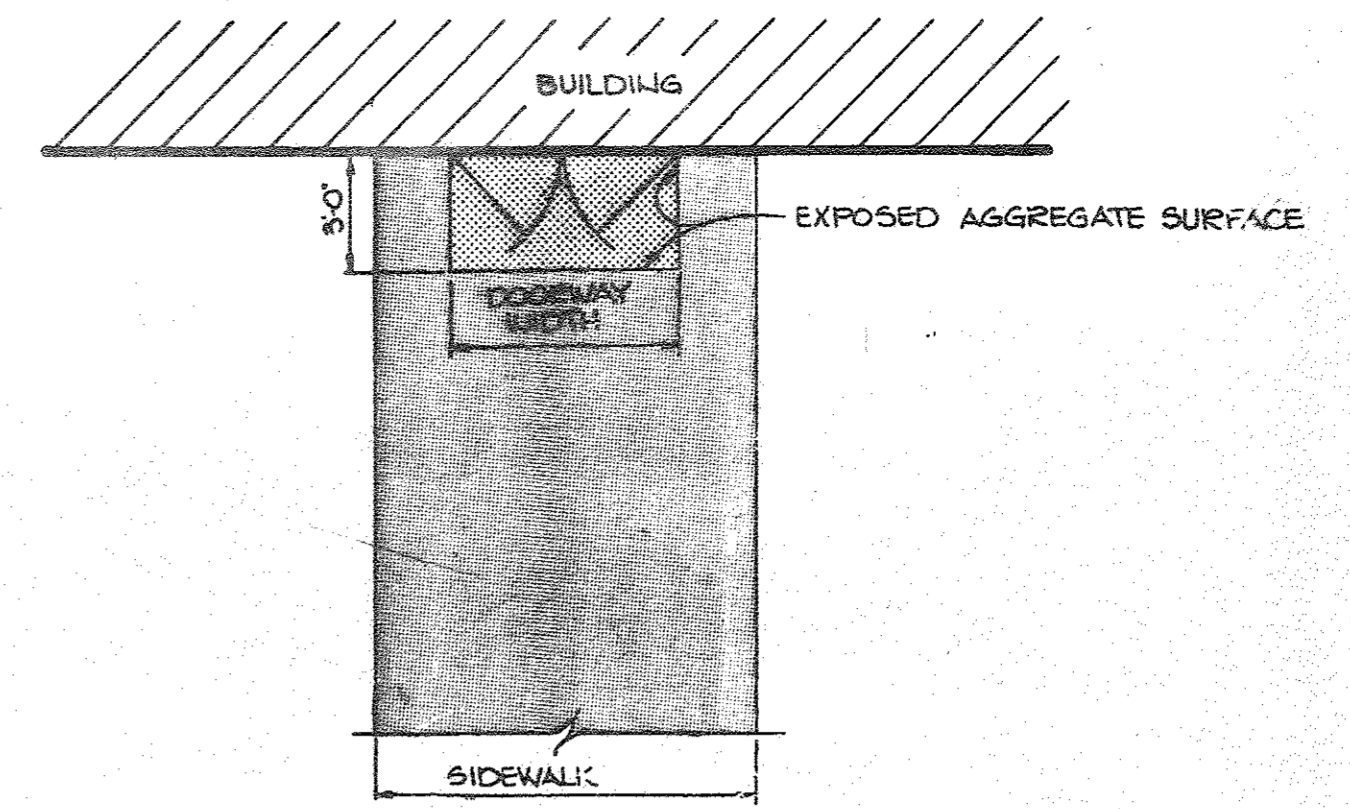
FUEL PUMP & UNDERGROUND TANK



DETAILS FOR BURIED FUEL TANK
NO SCALE



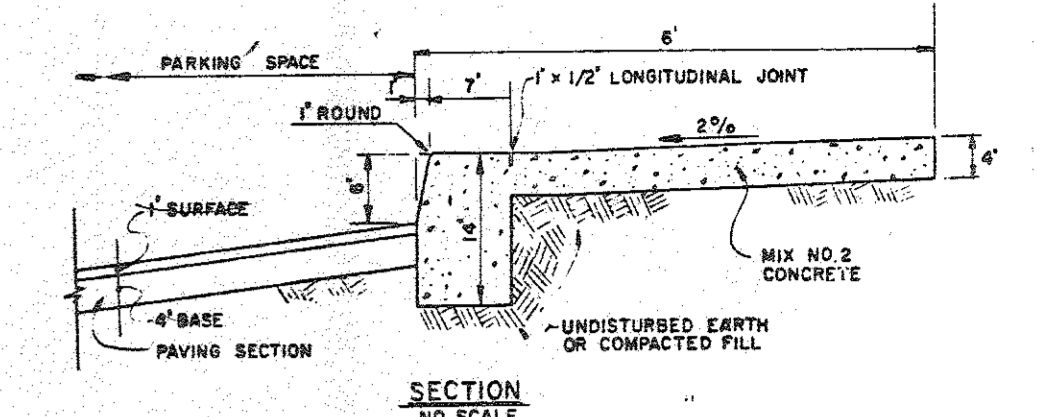
CANOPY PROFILES



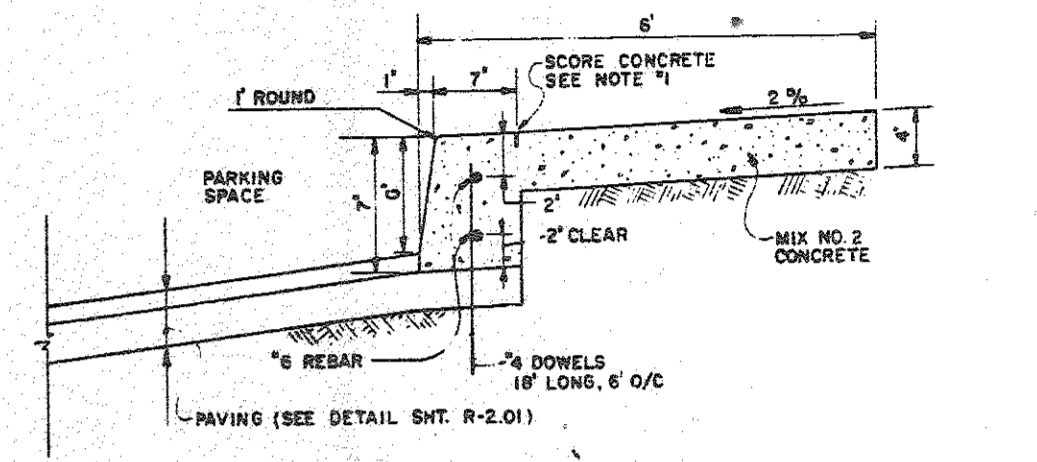
DETAIL BUILDING ENTRANCE TEXTURE IDENTIFICATION FOR THE BLIND
NO SCALE

NOTE: TO BE USED FOR ALL BUILDING ENTRANCES EXCEPT THOSE THAT ARE EXCLUSIVELY FIRE EXITS

- NOTES:
- LONGITUDINAL JOINT BETWEEN SIDEWALK AND CURB SHALL BE CONTINUOUS AND TO A DEPTH OF 1/4 THE SIDEWALK THICKNESS OR 1" MAX. LATITUDINAL JOINTS SHALL RUN FROM BACK EDGE OF SIDEWALK, CONTINUOUS TO THE BOTTOM FACE OF CURB TO A DEPTH OF 1/4" AND SPACED 2' APART.
 - PROVIDE 1/2" EXPANSION JOINTS AT 15' INTERVALS. IN LATITUDINAL JOINTS TO FULL CROSS-SECTION.

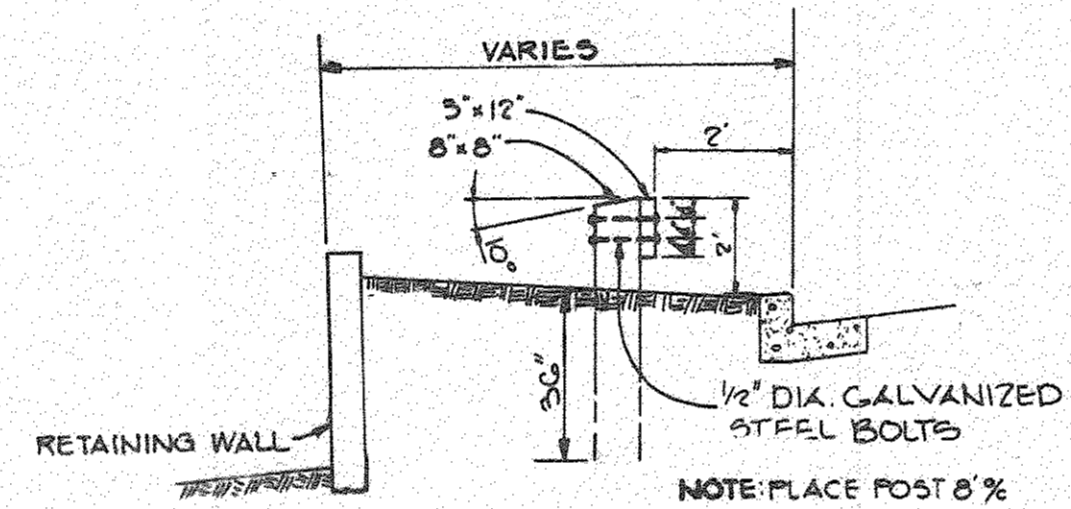


SECTION
NO SCALE

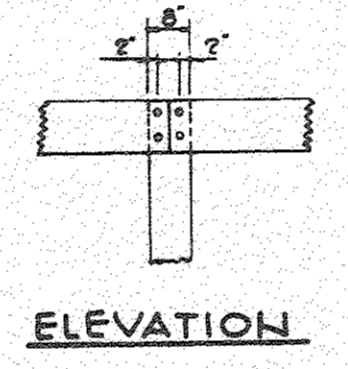


ALTERNATE SECTION
NO SCALE

MONOLITHIC CURB & SIDEWALK
NO SCALE

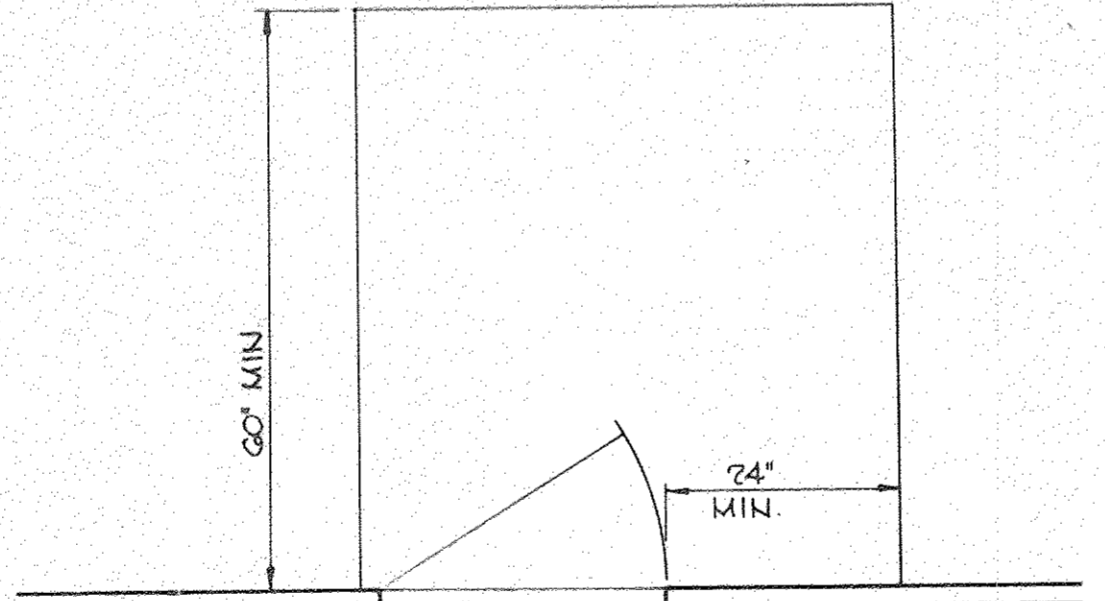
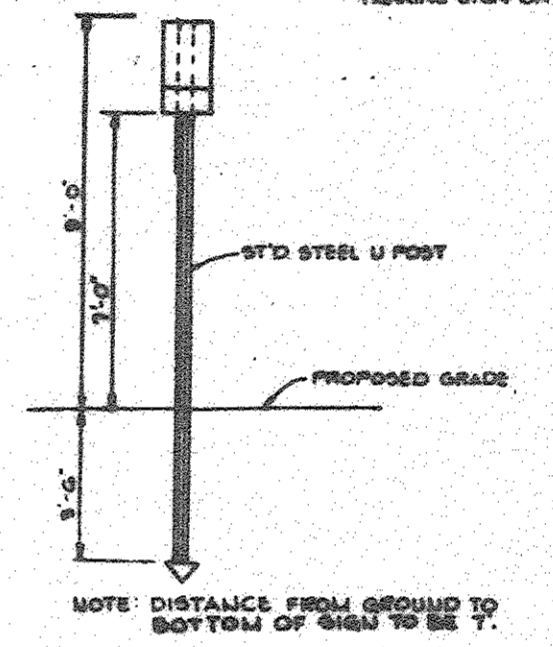
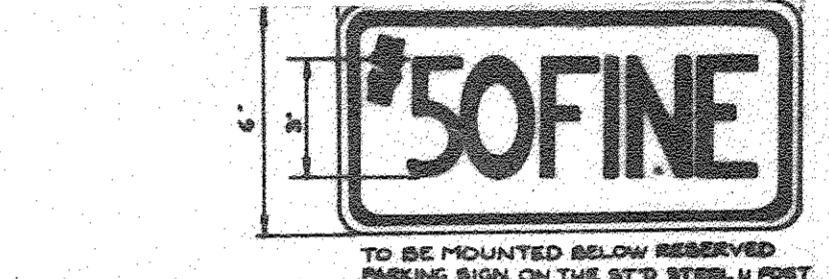


SECTION
GUARDRAIL DETAIL
NO SCALE

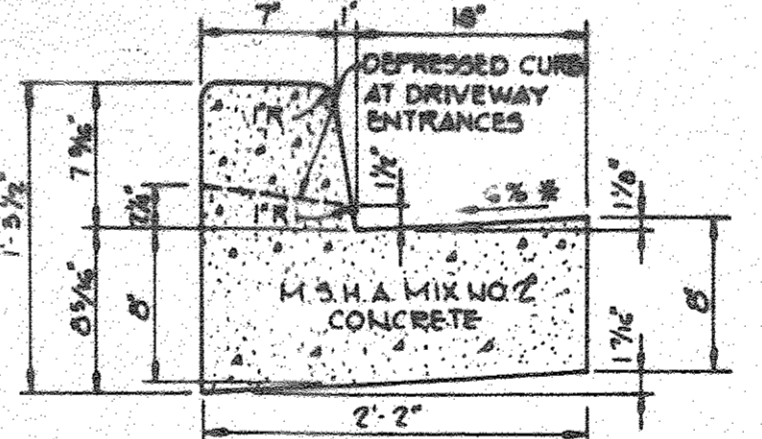


LEGEND AND BORDER - GREEN
WHITE SYMBOLS ON BLUE BACKGROUND
BACKGROUND - WHITE

HANDICAP SIGN
NO SCALE

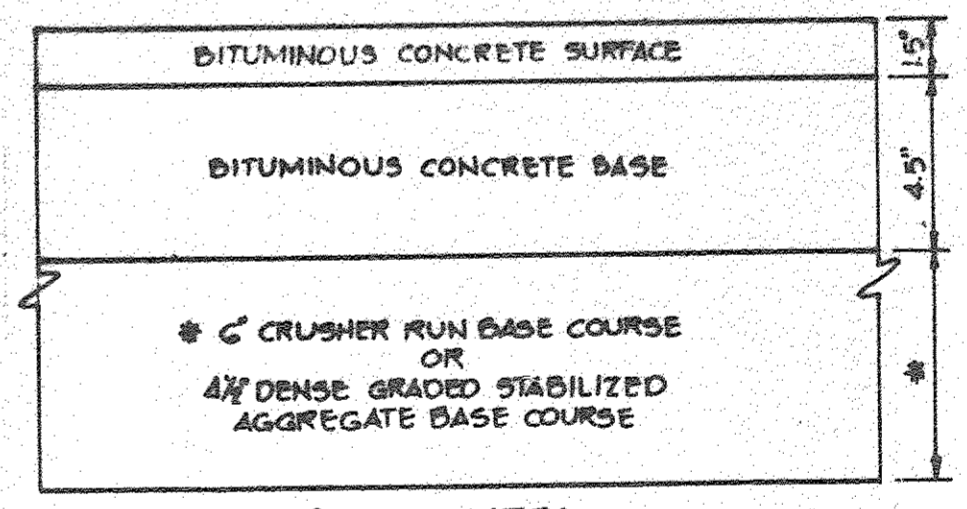


TYPICAL ENTRANCE DETAIL
NO SCALE

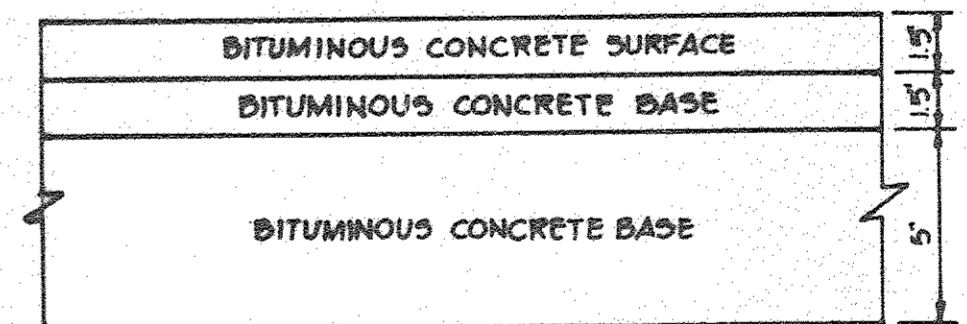


STANDARD 7" COMBINATION CURB AND GUTTER
NO SCALE

HOWARD COUNTY DESIGN MANUAL VOLUME III - STANDARD SPECIFICATIONS AND DETAILS FOR CONSTRUCTION (DRAWING R-3.01)
* GUTTER PAN AT THE MEDIAN EDGE OF INTERMEDIATE ARTERIALS OR THE HIGH SIDE OF SUPERELEVATED SECTIONS SHALL BE SLOPED AT THE SAME RATE AS THE PAVEMENT.

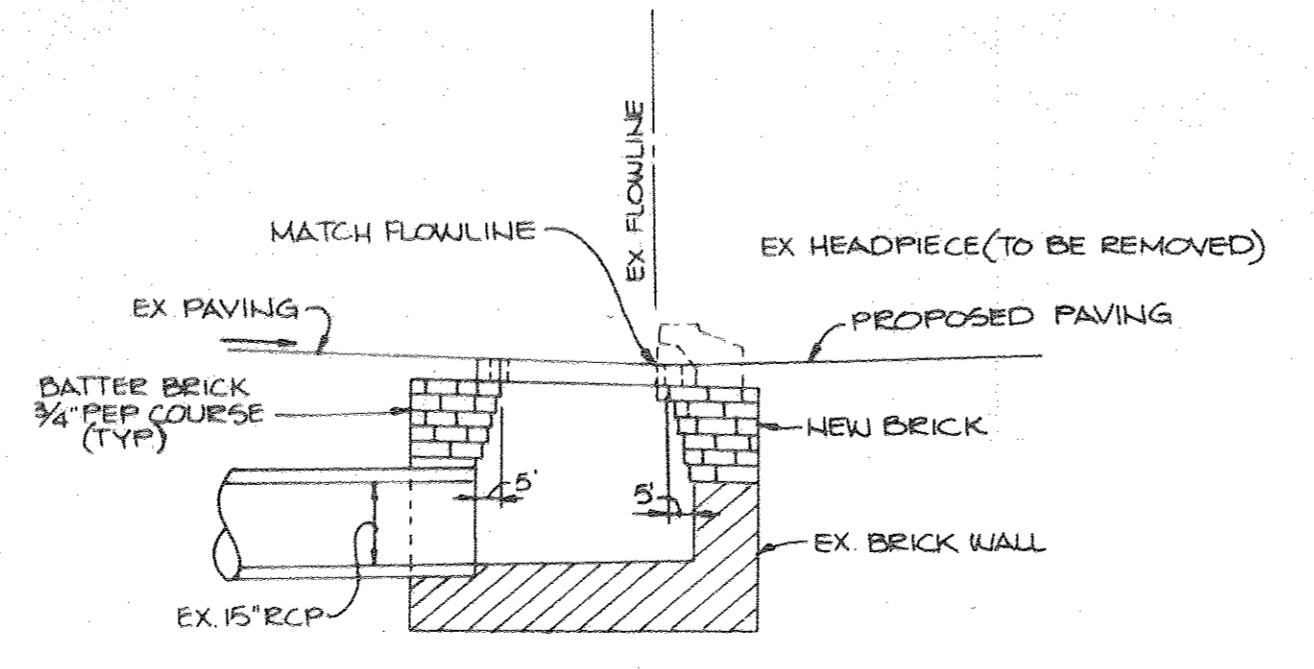


(ALTERNATE)

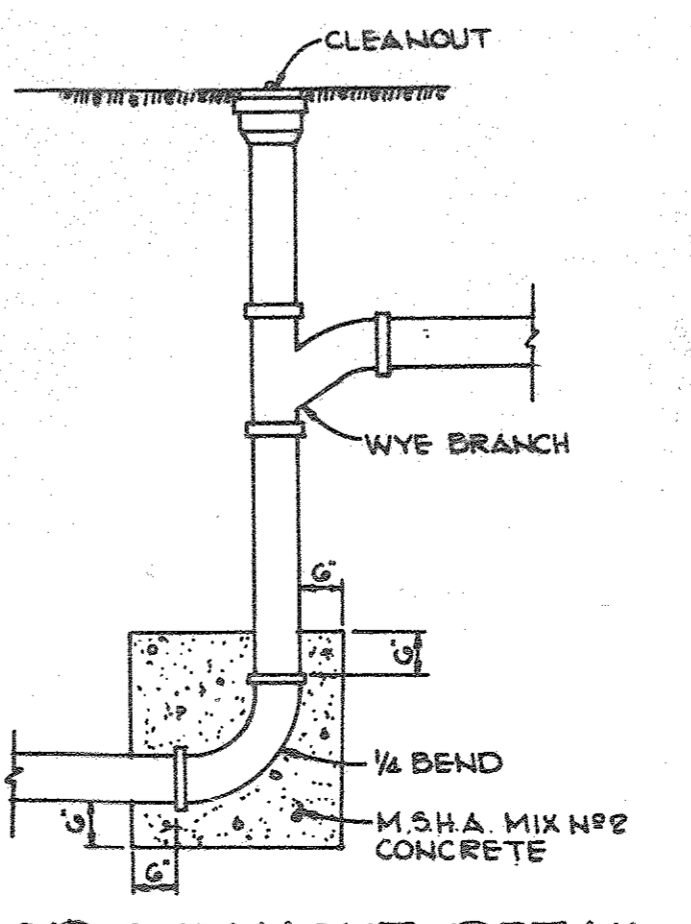


HOWARD COUNTY DESIGN MANUAL VOLUME III - STANDARD SPECIFICATIONS AND DETAILS FOR CONSTRUCTION (DRAWING R-2.01)

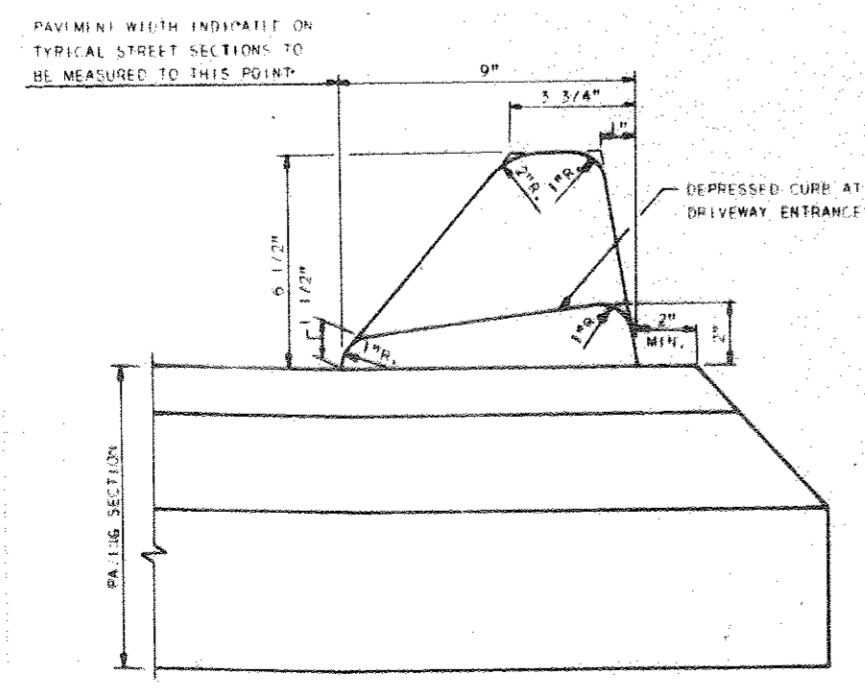
8" P-3 PAVING
NO SCALE



MODIFICATION DETAIL FOR EXISTING I-9
NO SCALE



DROP CLEANOUT DETAIL
NO SCALE



BITUMINOUS CURB
NO SCALE

APPROVED: FOR PUBLIC WATER AND PUBLIC SEWERAGE SYSTEMS, HOWARD COUNTY HEALTH DEPARTMENT.

Joey B. Blum 5-7-87
COUNTY HEALTH OFFICER DATE

APPROVED: HOWARD COUNTY OFFICE OF PLANNING AND ZONING

Sharon L. Harris 5-8-87
PLANNING DIRECTOR DATE

John W. Muegge 5-8-87
CHIEF, DIVISION OF LAND DEVELOPMENT AND ZONING ADMINISTRATION DATE

APPROVED: FOR PUBLIC WATER, PUBLIC SEWERAGE, STORM DRAINAGE SYSTEMS AND PUBLIC ROADS.

HOWARD COUNTY DEPARTMENT OF PUBLIC WORKS

Greg F. Nemy 5-6-87
DIRECTOR DATE

William S. Ray 5-6-87
CHIEF, BUREAU OF ENGINEERING DATE

1/7 REPLACED RETAINING WALLS 1, 2, 3 AND 4 WITH RETAINING WALL NOS. 1A, 2A, 3A, 4A AND 4B

DATE NO. REVISION

OWNER/DEVELOPER
CRYSEN CORRIDOR LIMITED PARTNERSHIP
710 AMERICAN CITY BUILDING
COLUMBIA, MARYLAND 21045

PROJECT:
CORRIDOR INDUSTRIAL PARK SECTION 1 PARCEL 0

AREA TAX MAP #47 PARCEL 0
REVISION OF CORRIDOR INDUSTRIAL PARK S.D.P. 85-158 6TH ELECTION DISTRICT HOWARD COUNTY, MARYLAND

TITLE:
DETAILS

THE RIEMER GROUP, INC.
A LAND PLANNING, DESIGN & CIVIL ENGINEERING FIRM
3105 HEALTH PARK DRIVE, ELLICOTT CITY, MD. 21043 301 461-2690

4-1-87 DATE

DESIGNED BY: L.J.D.

DRAWN BY: DAM

PROJECT NO: 015000

DATE: 3/20/85

SCALE: AS SHOWN

DRAWING NO. 3 OF 15

ARTHUR E. MUEGGE #8707

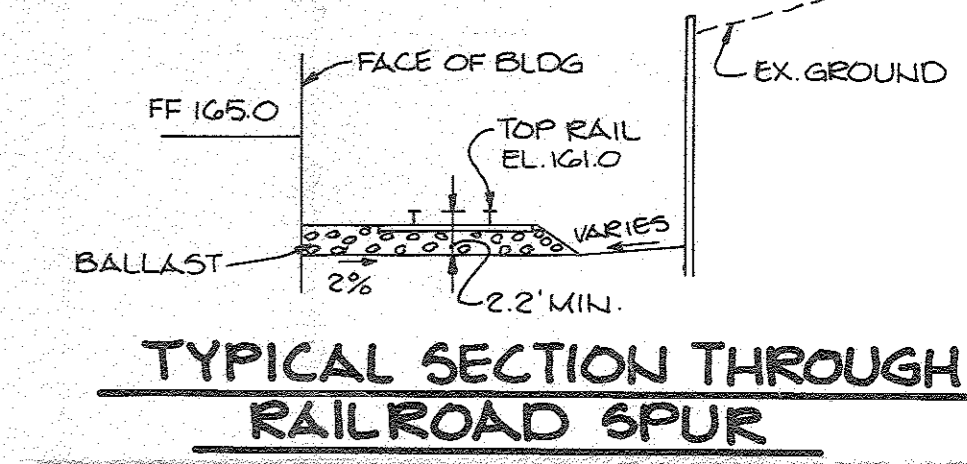
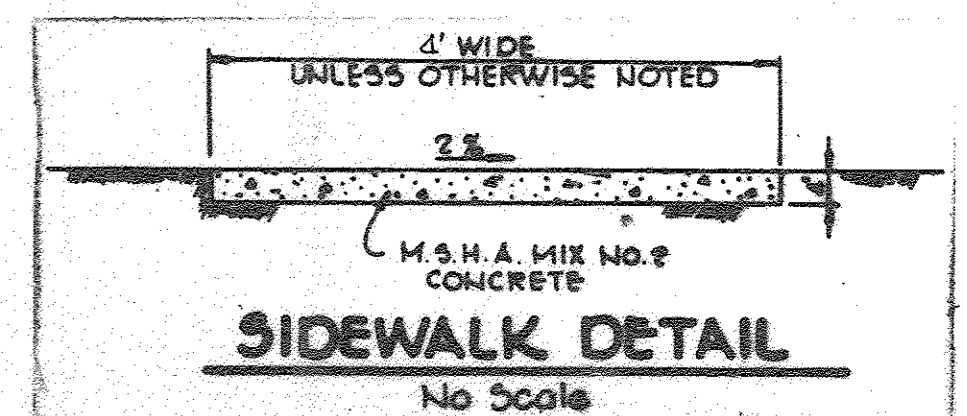
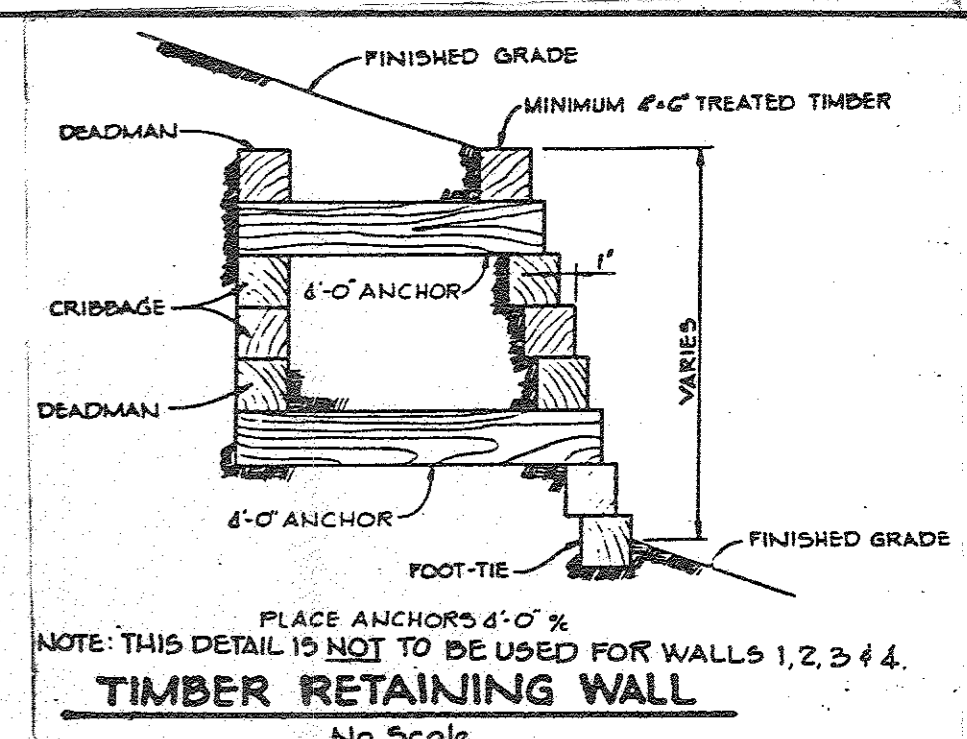
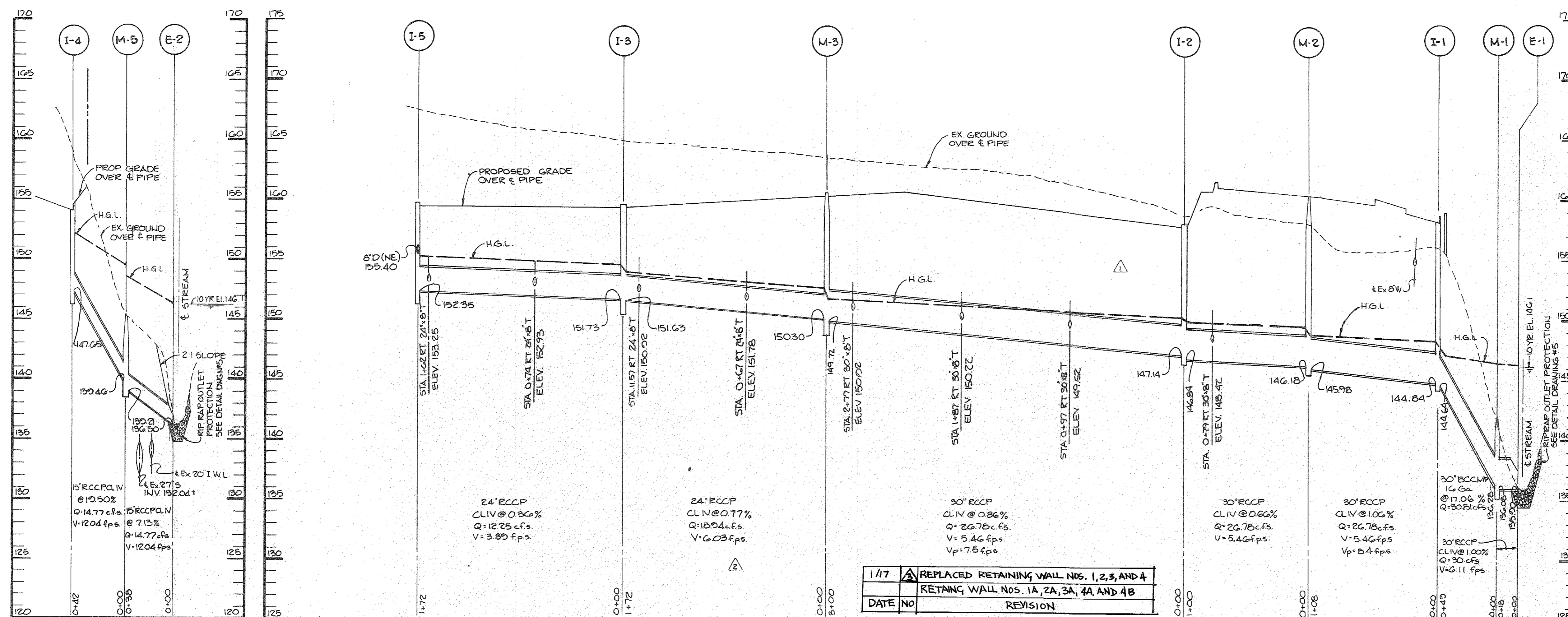
APPROVED
DIVISION OF LAND DEVELOPMENT & ZONING ADMINISTRATION
HOWARD COUNTY, MARYLAND
DATE 4-9-87
M. H. M.

MORRIS & RITCHE ASSOCIATES, INC.
ENGINEERS, PLANNERS, SURVEYORS AND LANDSCAPE ARCHITECTS
1420 PARK CENTER DRIVE - LAUREL, MD 20707
(410) 752-0162 (FAX) (410) 752-7265
MORRIS&RITCHE.COM

COPYRIGHT MORRIS & RITCHE ASSOCIATES, INC.

NO PROFESSIONAL CERTIFICATIONS
I HEREBY CERTIFY THAT THESE DOCUMENTS WERE PREPARED OR APPROVED BY ME, AND THAT I AM A DULY LICENSED PROFESSIONAL ENGINEER UNDER THE LAWS OF THE STATE OF MARYLAND.
LICENSE NO: 29223
EXPIRATION DATE: 6-16-17

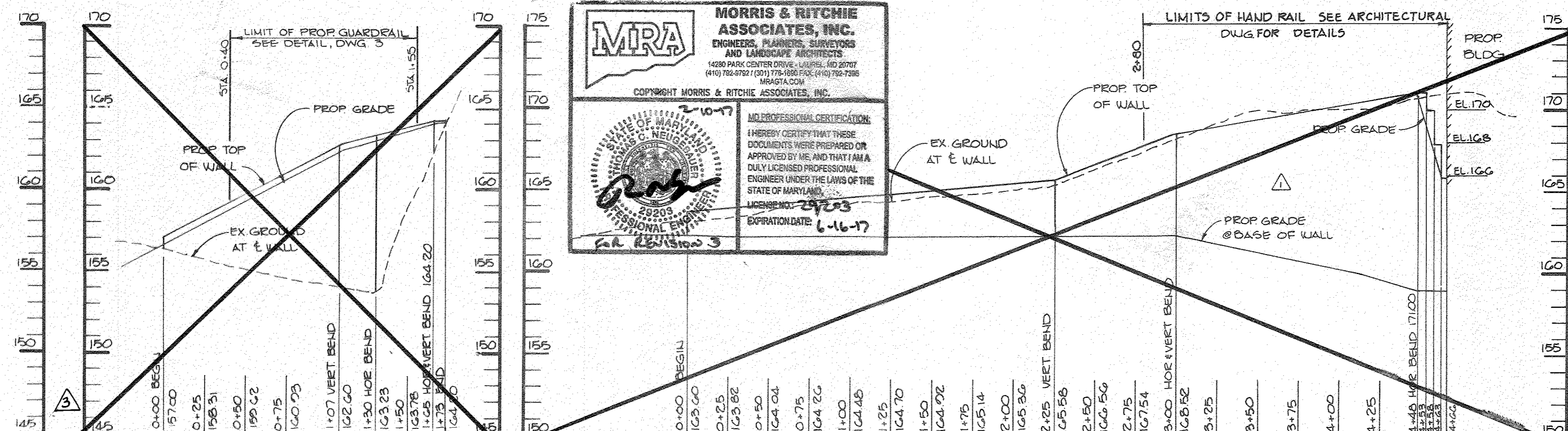
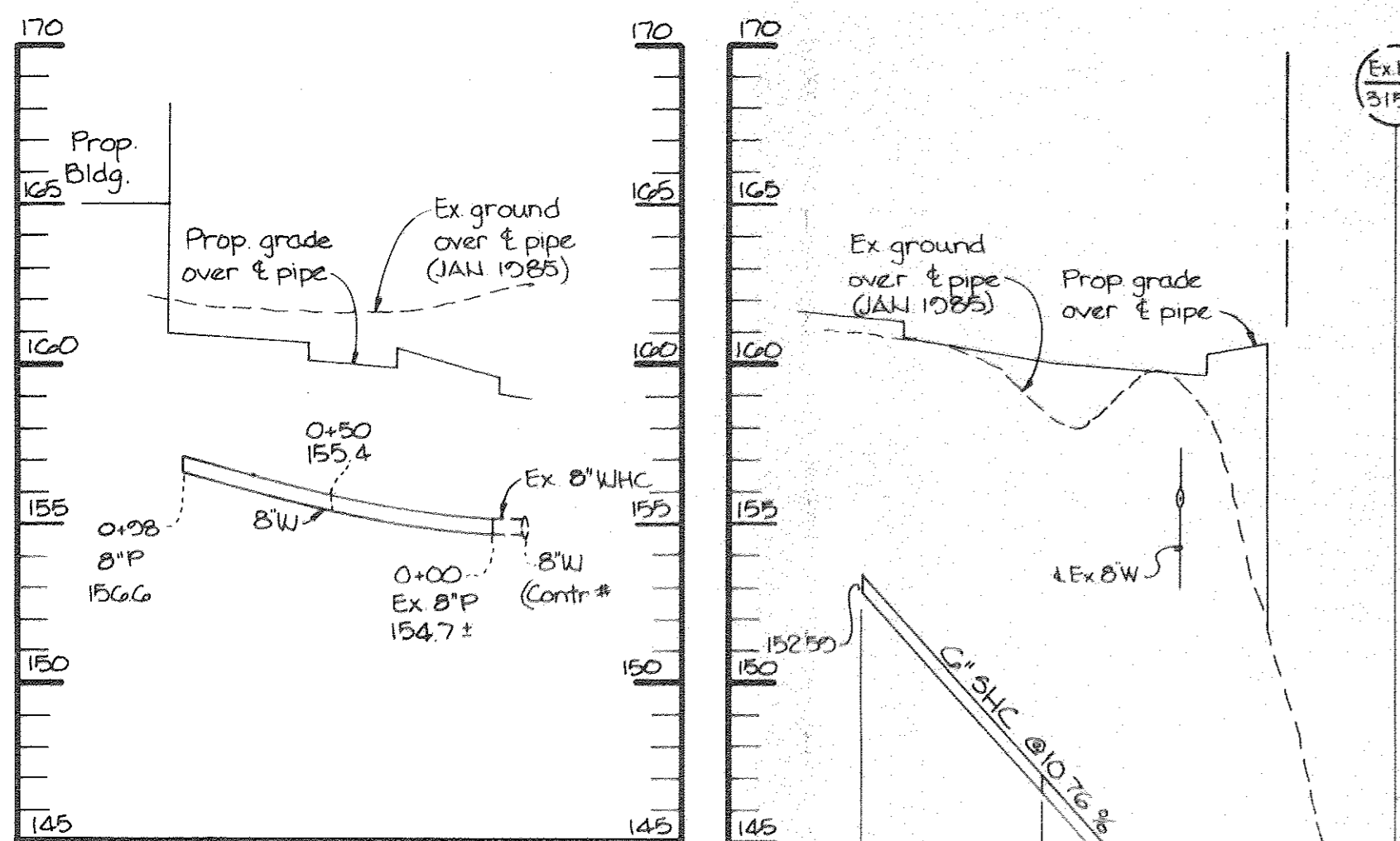
FOR REVISION 3



1/17	REPLACED RETAINING WALL NOS. 1, 2, 3, AND 4
DATE	NO. REVISION
	RETAINING WALL NOS. 1A, 2A, 3A, 4A AND 4B

STORM DRAIN PROFILE

STORM DRAIN PROFILE



MORRIS & RITCHIE ASSOCIATES, INC.
ENGINEERS, PLANNERS, SURVEYORS AND LANDSCAPE ARCHITECTS
1400 PARK CENTER DRIVE • LAUREL, MD 20707
(410) 253-9200 (TOLL FREE) 1-800-592-7095
MRA@AOL.COM MRA@STATE.COM

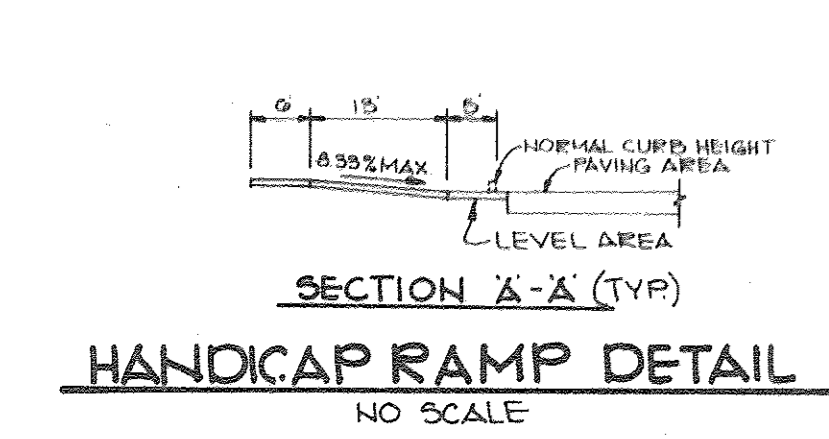
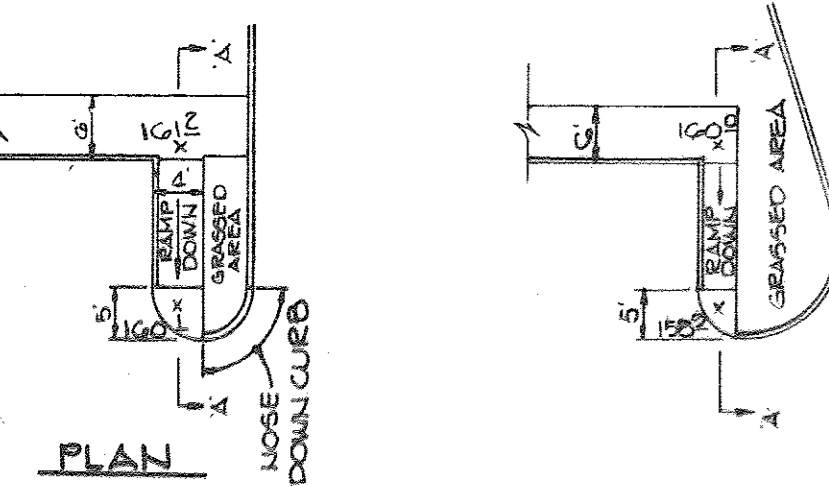
PROFESSIONAL CERTIFICATION:
I HEREBY CERTIFY THAT THESE DOCUMENTS WERE PREPARED OR APPROVED BY ME, AND THAT I AM A DULY LICENSED PROFESSIONAL ENGINEER UNDER THE LAWS OF THE STATE OF MARYLAND.
LICENSE NO. 24223
EXPIRATION DATE: 6-16-17

John E. Muegge
P.E. License # 24223

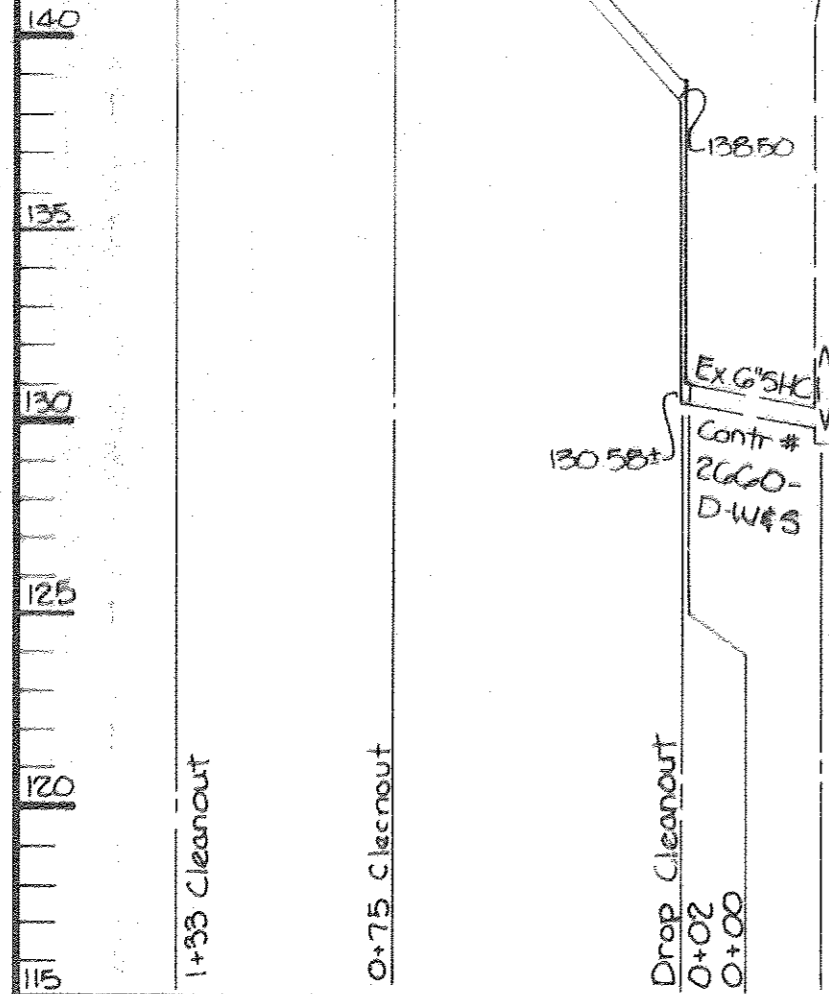
WATER PROFILE

RETAINING WALL # 3

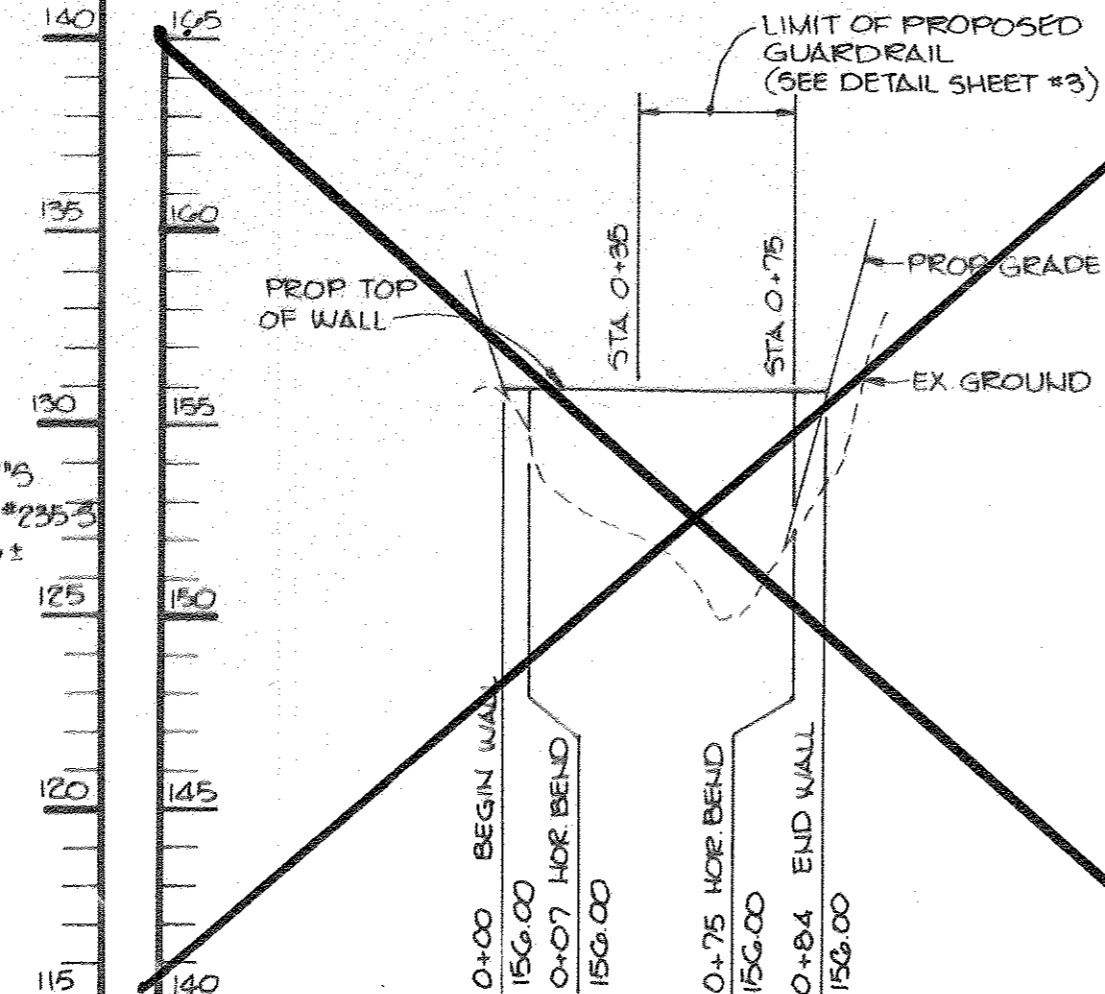
RETAINING WALL # 4



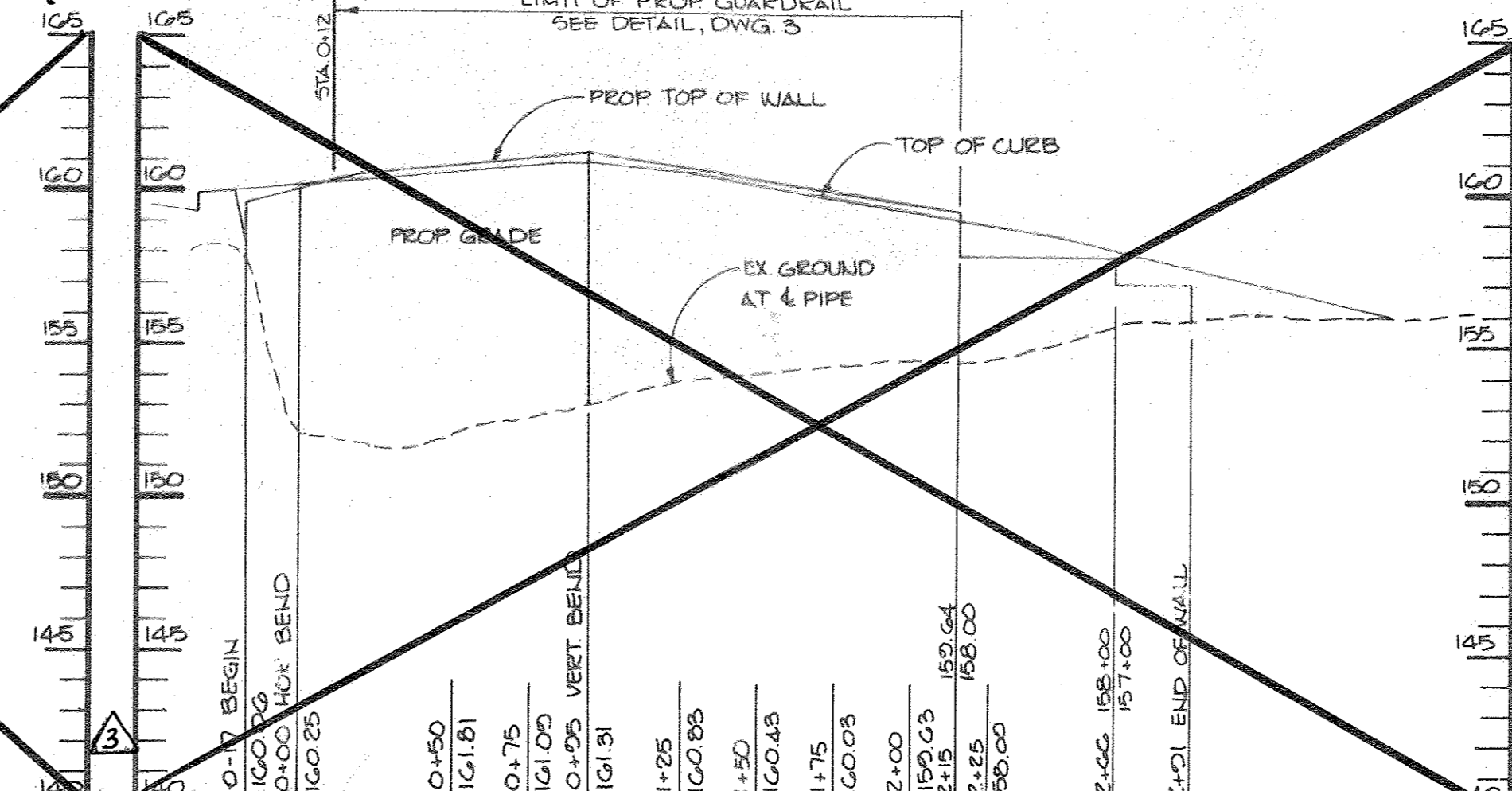
HANDICAP RAMP DETAIL
NO SCALE



SEWER PROFILE



RETAINING WALL # 1



RETAINING WALL # 2

SEE SHEETS 9 THROUGH 14 FOR RETAINING WALL PROFILES AND SECTIONS A

APPROVED
DIVISION OF LAND DEVELOPMENT & ZONING ADMINISTRATION
HOWARD COUNTY, MARYLAND
DATE 4-9-87

APPROVED: FOR PUBLIC WATER AND PUBLIC SEWERAGE SYSTEMS, HOWARD COUNTY HEALTH DEPARTMENT.
John E. Muegge 5-7-87
COUNTY HEALTH OFFICER DATE

APPROVED: HOWARD COUNTY OFFICE OF PLANNING AND ZONING.
Thomas L. Harris 5-8-87
PLANNING DIRECTOR DATE
John E. Muegge 5-8-87
CHIEF, DIVISION OF LAND DEVELOPMENT AND ZONING ADMINISTRATION

APPROVED: FOR PUBLIC WATER, PUBLIC SEWERAGE, STORM DRAINAGE SYSTEMS AND PUBLIC ROADS.
HOWARD COUNTY DEPARTMENT OF PUBLIC WORKS
Scott F. Nemy 5-6-87
DIRECTOR DATE
William S. Cole 5-6-87
CHIEF, BUREAU OF ENGINEERING DATE

OWNER/DEVELOPER
CRYSSEL CORRIDOR LIMITED PARTNERSHIP
710 AMERICAN CITY BUILDING
COLUMBIA, MARYLAND 21045

PROJECT
CORRIDOR INDUSTRIAL PARK SECTION I PARCELO
AREA OF S.D.P. 85-158 6TH ELECTION DISTRICT
HOWARD COUNTY, MARYLAND
TAX MAP NO. 47
TITLE:
PROFILES & DETAILS

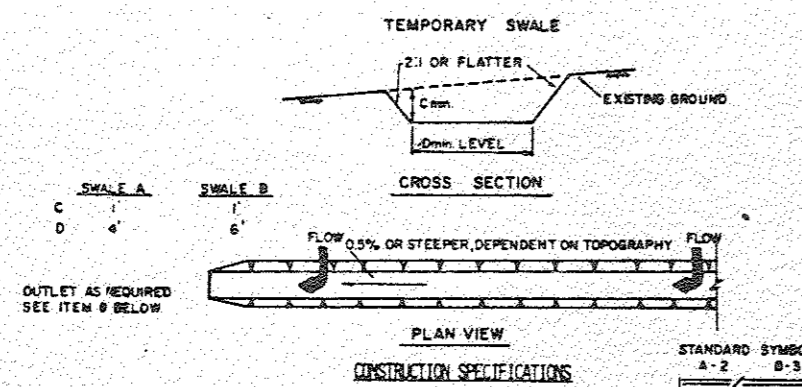
THE RIEMER GROUP, INC.
A LAND PLANNING, DESIGN & CIVIL ENGINEERING FIRM
3105 HEALTH PARK DRIVE, ELLICOTT CITY, MD 21043 301 461-2690

4-21-87 DATE
DESIGNED BY L.J.D.
DRAWN BY DAM
PROJECT NO 015000
DATE: 3-20-85
SCALE: AS SHOWN
DRAWING NO. 4 OF 115

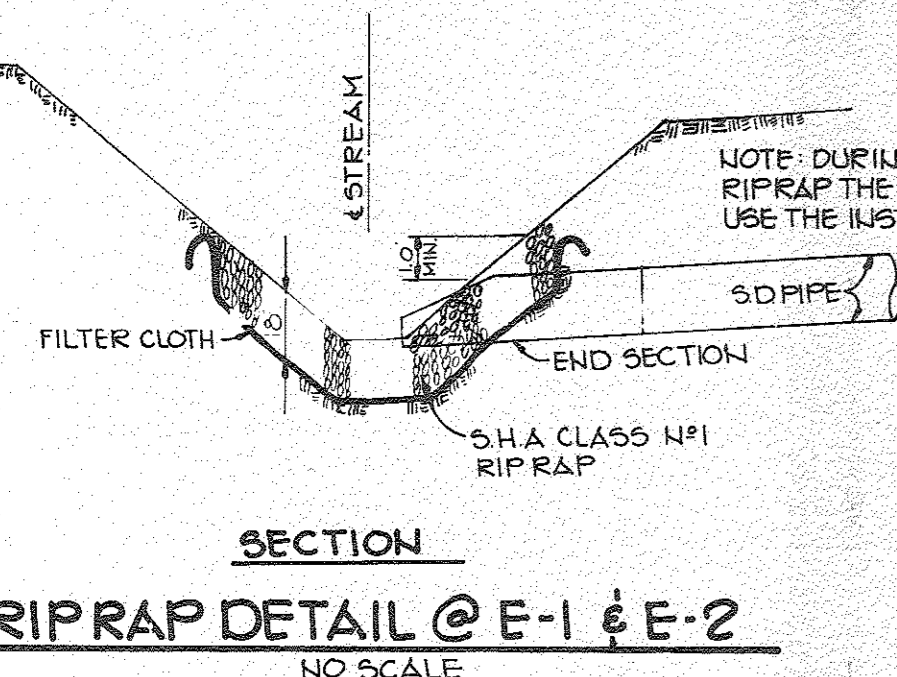
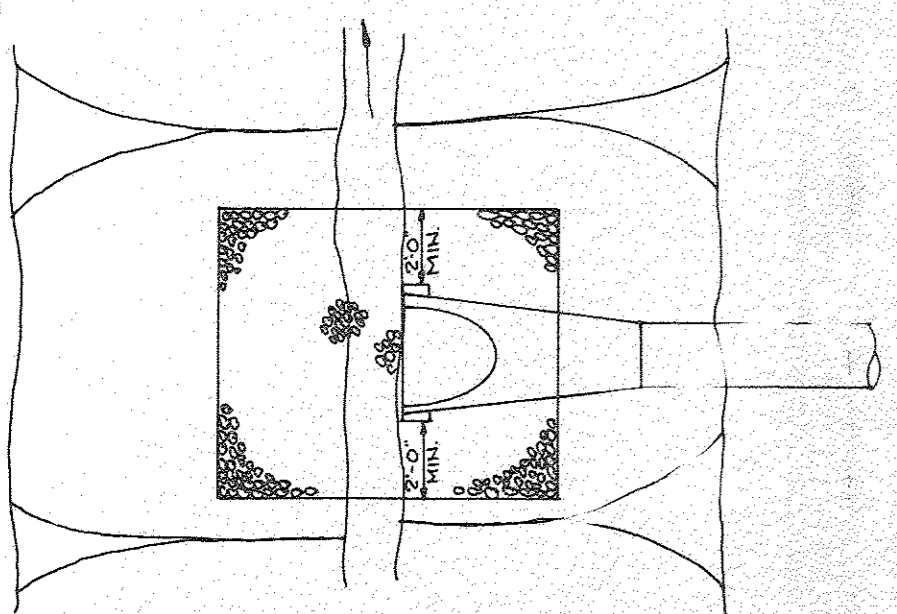
APPROVED
DIVISION OF LAND DEVELOPMENT & ZONING ADMINISTRATION
HOWARD COUNTY, MARYLAND
DATE 4-9-87

Arthur E. Muegge
PROFESSIONAL ENGINEER
ARTHUR E. MUEGGE #6707

- OBTAIN A GRADING PERMIT AND A WRA PERMIT.
- INSTALL STABILIZED CONSTRUCTION ENTRANCE AND SILT FENCE.
- OBTAIN OUR PERMIT FOR STORM DRAINS AND CONSTRUCT STORM DRAIN FROM E-1 TO E-2.
- INSTALL TRAP NO. 1, TRAP NO. 2 AND EARTH DIKES.
- ROUGH GRADE SITE, REBUILDING EARTH DIKES TO PROVIDE POSITIVE DRAINAGE TO TRAP NO. 1 OR TRAP NO. 2.
- INSTALL REMAINING UTILITIES, STORM DRAINS AND STORM FILTER INLET PROTECTION.
- FINISH REMAINING CONSTRUCTION EXCEPT IN AREA OF TRAP NO. 1 AND TRAP NO. 2.
- STABILIZE ALL UPSTREAM AREAS IN ACCORDANCE WITH PERMANENT SEEDING NOTES SO THAT APPROVAL MAY BE GIVEN BY THE COUNTY REPRESENTATIVE TO REMOVE TRAP NO. 1 AND TRAP NO. 2 AND COMPLETE CONSTRUCTION IN THESE AREAS.
- UPON APPROVAL OF THE SEDIMENT CONTROL INSPECTOR, REMOVE ALL REMAINING SEDIMENT CONTROL DEVICES AND STABILIZE IN ACCORDANCE WITH PERMANENT SEEDING NOTES.



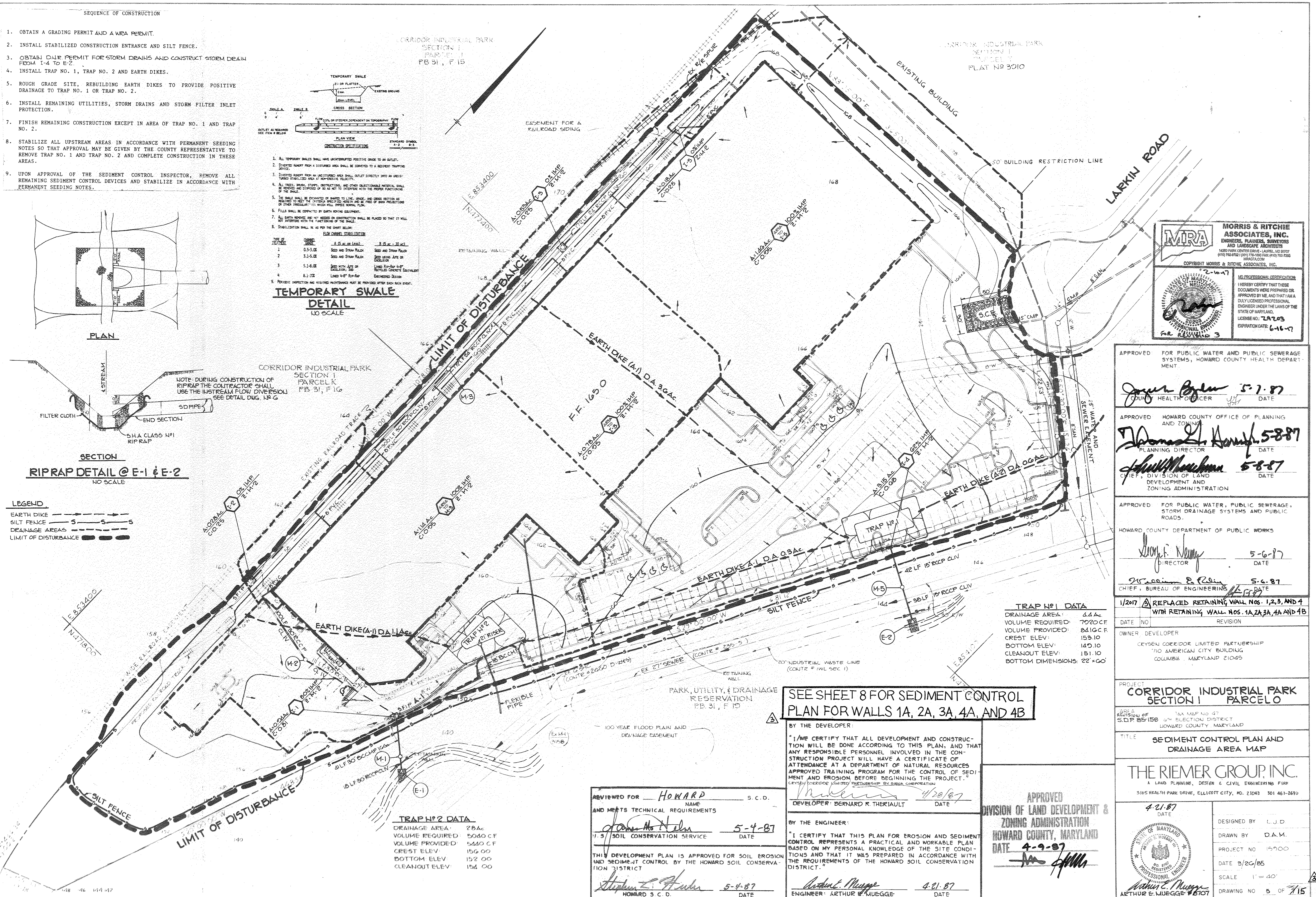
- ALL TEMPORARY SWALES SHALL HAVE UNDISTURBED POSITIVE GRADE TO AN OUTLET.
 - DIVERTED RUNOFF FROM A DISTURBED AREA SHALL BE CONVEYED TO A SEDIMENT TRAPPING DEVICE.
 - DIVERTED RUNOFF FROM AN UNDISTURBED AREA SHALL OUTLET DIRECTLY INTO AN UNDISTURBED STABILIZED AREA AT NON-EROSIVE VELOCITY.
 - ALL TREES, BRUSH, STUMPS, OBSTRUCTIONS, AND OTHER OBJECTABLE MATERIAL SHALL BE REMOVED AND DISPOSED OF SO AS NOT TO INTERFERE WITH THE PROPER FUNCTIONING OF THE SWALE.
 - THE SWALE SHALL BE EXCAVATED TO SHOWN TO LINE, GRADE, AND CROSS SECTION AS SHOWN TO KEEP THE CENTERLINE SPECIFIED HEREIN AND BE FREE OF BANK PROJECTIONS OR OTHER IRREGULARITIES WHICH WILL IMPEDER NORMAL FLOW.
 - FILLS SHALL BE COMPACTED BY EARTH VIBRYING EQUIPMENT.
 - ALL EARTH REMOVED AND NOT REUSED ON CONSTRUCTION SHALL BE PLACED TO THAT IT WILL NOT INTERFERE WITH THE FUNCTIONING OF THE SWALE.
 - STABILIZATION SHALL BE AS PER THE CHART BELOW:
- | TYPE OF DISTURBANCE | CHISEL DEPTH | SEEDING | EROSION CONTROL |
|---------------------|--------------|---|---|
| 1 | 0.5-3.0" | SEED AND STRAW MULCH | SEED AND STRAW MULCH |
| 2 | 3.1-5.0" | SEED AND STRAW MULCH | SEED AND STRAW MULCH |
| 3 | 5.1-8.0" | SEED WITH LIME OR FERTILIZER, SEE ENGINEER'S DESIGN | LIME RIP-RAP 6" OR FERTILIZED CONCRETE EQUIVALENT |
| 4 | 8.1-12" | LIME RIP-RAP | ENGINEER'S DESIGN |
8. PERIODIC INSPECTION AND REQUIRED MAINTENANCE MUST BE PROVIDED AFTER EACH RAIN EVENT.



- LEGEND**
- EARTH DIKE
 - SILT FENCE
 - DRAINAGE AREAS
 - LIMIT OF DISTURBANCE

CORRIDOR INDUSTRIAL PARK
 SECTION I
 PARCEL K
 PB 31, F 15

CORRIDOR INDUSTRIAL PARK
 SECTION I
 PLAT NO 3010



MRA
MORRIS & RITCHIE ASSOCIATES, INC.
 ENGINEERS, PLANNERS, SURVEYORS
 AND LANDSCAPE ARCHITECTS
 14820 PARK CENTER DRIVE - LAUREL, MD 20727
 (410) 702-9722 / (301) 718-1800 FAX: (410) 718-7335
 WWW.MRA.COM

PROFESSIONAL VERIFICATION
 I HEREBY CERTIFY THAT THESE DOCUMENTS WERE PREPARED OR APPROVED BY ME AND THAT I AM A DULY LICENSED PROFESSIONAL ENGINEER UNDER THE LAWS OF THE STATE OF MARYLAND.
 LICENSE NO. 7A703
 EXPIRATION DATE: 6-16-17

APPROVED FOR PUBLIC WATER AND PUBLIC SEWERAGE SYSTEMS, HOWARD COUNTY HEALTH DEPARTMENT.

James Byler 5-7-87
 JUNIOR HEALTH OFFICER DATE

APPROVED HOWARD COUNTY OFFICE OF PLANNING AND ZONING
Thomas L. Smith 5-8-87
 PLANNING DIRECTOR DATE

John M. Sherman 5-8-87
 CHIEF, DIVISION OF LAND DEVELOPMENT AND ZONING ADMINISTRATION DATE

APPROVED FOR PUBLIC WATER, PUBLIC SEWERAGE, STORM DRAINAGE SYSTEMS AND PUBLIC ROADS.

HOWARD COUNTY DEPARTMENT OF PUBLIC WORKS
Joseph J. Neary 5-6-87
 DIRECTOR DATE

William E. Reim 5-6-87
 CHIEF, BUREAU OF ENGINEERING DATE

1/2017 REPLACED RETAINING WALL NOS. 1, 2, 3, AND 4 WITH RETAINING WALL NOS. 1A, 2A, 3A, 4A AND 4B

OWNER DEVELOPER
 CRYSEN CORRIDOR LIMITED PARTNERSHIP
 710 AMERICAN CITY BUILDING
 COLUMBIA MARYLAND 21045

PROJECT
CORRIDOR INDUSTRIAL PARK SECTION I PARCELO

TAX MAP NO. 47
 6th ELECTION DISTRICT
 HOWARD COUNTY MARYLAND

TITLE
SEDIMENT CONTROL PLAN AND DRAINAGE AREA MAP

THE RIEMER GROUP, INC.
 A LAND PLANNING, DESIGN & CIVIL ENGINEERING FIRM
 3105 HEALTH PARK DRIVE, ELLICOTT CITY, MD. 21043 301 461-2699

4-21-87 DATE
 DESIGNED BY L.J.D.
 DRAWN BY D.A.M.
 PROJECT NO 15700
 DATE 3/20/85
 SCALE 1" = 40'
 DRAWING NO 5 OF 715

TRAP NO. 1 DATA

DRAINAGE AREA:	4.4 Ac
VOLUME REQUIRED:	7020 CF
VOLUME PROVIDED:	8416 CF
CREST ELEV:	159.10
BOTTOM ELEV:	149.10
CLEANOUT ELEV:	151.10
BOTTOM DIMENSIONS:	22' x 60'

SEE SHEET 8 FOR SEDIMENT CONTROL PLAN FOR WALLS 1A, 2A, 3A, 4A, AND 4B

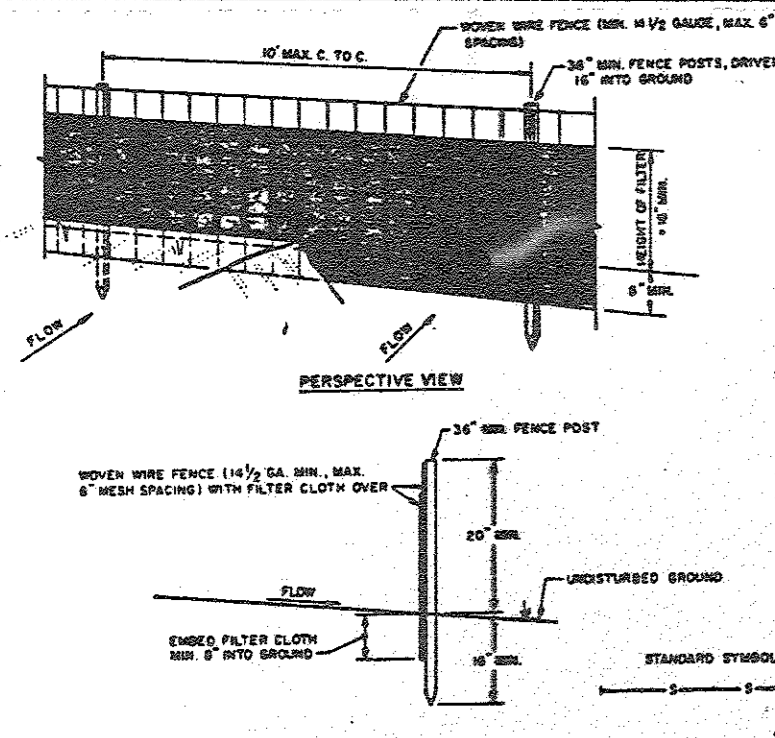
BY THE DEVELOPER:
 "I/WE CERTIFY THAT ALL DEVELOPMENT AND CONSTRUCTION WILL BE DONE ACCORDING TO THIS PLAN, AND THAT ANY RESPONSIBLE PERSONNEL INVOLVED IN THE CONSTRUCTION PROJECT WILL HAVE A CERTIFICATE OF ATTENDANCE AT A DEPARTMENT OF NATURAL RESOURCES APPROVED TRAINING PROGRAM FOR THE CONTROL OF SEDIMENT AND EROSION BEFORE BEGINNING THE PROJECT."
 CRYSEN CORRIDOR LIMITED PARTNERSHIP BY SUBIA CORPORATION
Bernard R. Theriault 4/28/87
 DEVELOPER: BERNARD R. THERIAULT DATE

BY THE ENGINEER:
 "I CERTIFY THAT THIS PLAN FOR EROSION AND SEDIMENT CONTROL REPRESENTS A PRACTICAL AND WORKABLE PLAN BASED ON MY PERSONAL KNOWLEDGE OF THE SITE CONDITIONS AND THAT IT WAS PREPARED IN ACCORDANCE WITH THE REQUIREMENTS OF THE HOWARD SOIL CONSERVATION DISTRICT."
Arthur E. Muegge 4-21-87
 ENGINEER: ARTHUR E. MUEGGE DATE

REVIEWED FOR HOWARD S.C.D.
 NAME
 AND MEETS TECHNICAL REQUIREMENTS
James M. Helm 5-4-87
 SOIL CONSERVATION SERVICE DATE
 THIS DEVELOPMENT PLAN IS APPROVED FOR SOIL EROSION AND SEDIMENT CONTROL BY THE HOWARD SOIL CONSERVATION DISTRICT
Stephen E. Helm 5-4-87
 HOWARD S.C.D. DATE

TRAP NO. 2 DATA

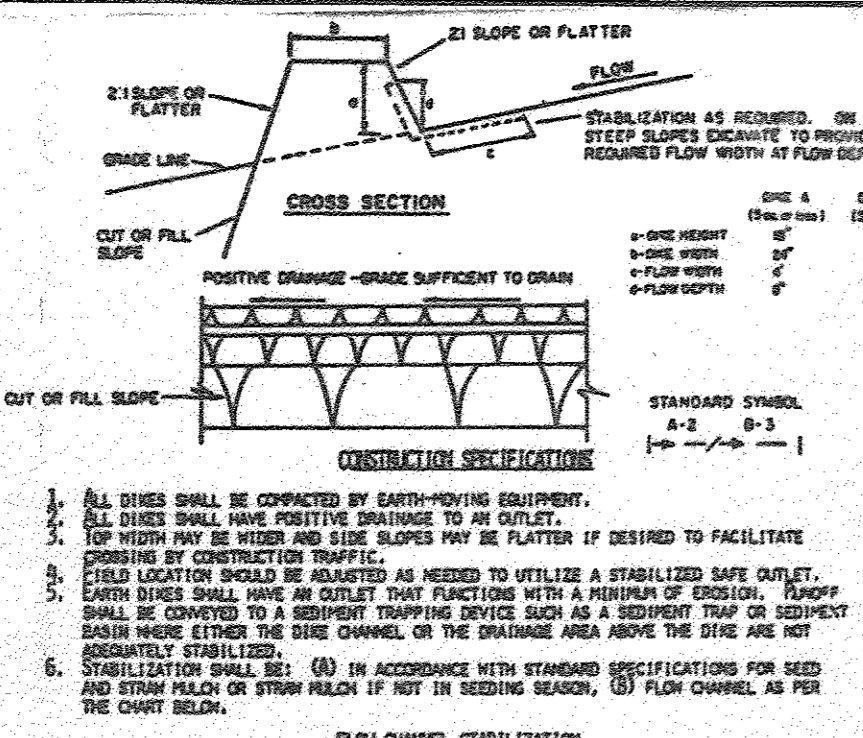
DRAINAGE AREA:	28 Ac
VOLUME REQUIRED:	5040 CF
VOLUME PROVIDED:	5440 CF
CREST ELEV:	156.00
BOTTOM ELEV:	152.00
CLEANOUT ELEV:	154.00



CONSTRUCTION NOTES FOR FABRICATED SILT FENCE

1. Woven wire fence to be fastened securely to fence posts with wire ties or staples.
2. Filter cloth to be fastened securely to woven wire fence with ties spaced every 4' at top and mid section.
3. When the sections of filter cloth adjoin each other they shall be overlapped by six inches and folded.
4. Maintenance shall be performed as needed and material removed when "bales" develop in the silt fence.

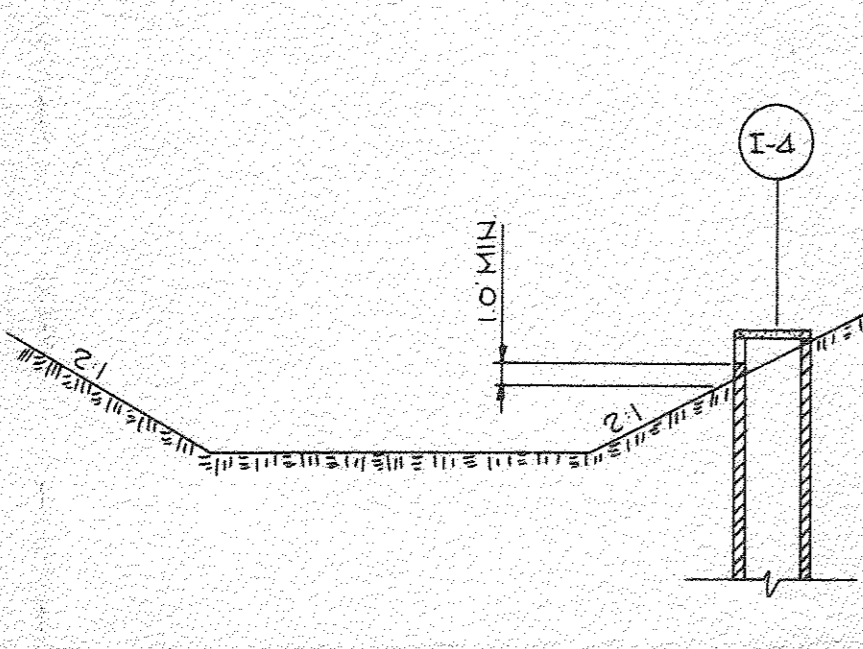
SILT FENCE
NO SCALE



CONSTRUCTION SPECIFICATIONS

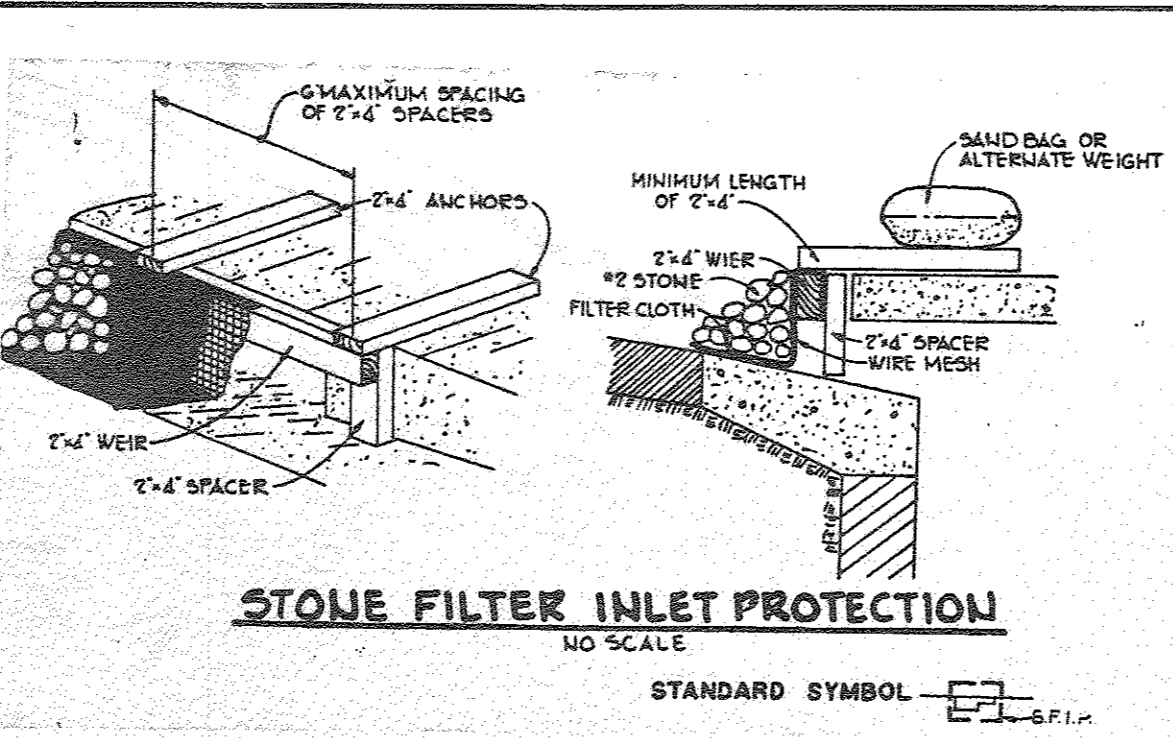
1. All dikes shall be constructed by earth-moving equipment.
2. Dikes shall have positive drainage to an outlet.
3. Top width may be wider and side slopes may be flatter if desired to facilitate crossing by construction traffic.
4. Field location should be adjusted as needed to utilize a stabilized safe outlet.
5. Earth dikes shall have an outlet that functions with a minimum of erosion. Backup shall be provided to a sediment trapping device such as a sediment trap or sediment basin which extends the side channel of the drainage area above the dike and not immediately stabilized.
6. Stabilization shall be in accordance with standard specifications for seed and straw mulch or other stabilization methods.
7. Periodic inspection and required maintenance must be provided after each rain event.

EARTH DIKE
NO SCALE



1. Sediment shall be removed and the trap restored to its original dimensions when the sediment has accumulated to 1/2 the design depth of the trap. Removed sediment shall be deposited in a suitable area and in such a manner that it will not erode.
2. The structure shall be inspected after each rain and repairs made as needed.
3. Construction operations shall be carried out in such a manner that erosion and water pollution shall be minimized.
4. The sediment trap shall be removed and the area stabilized when the constructed drainage area has been properly stabilized.
5. All cut slopes shall be 1:1 or flatter.

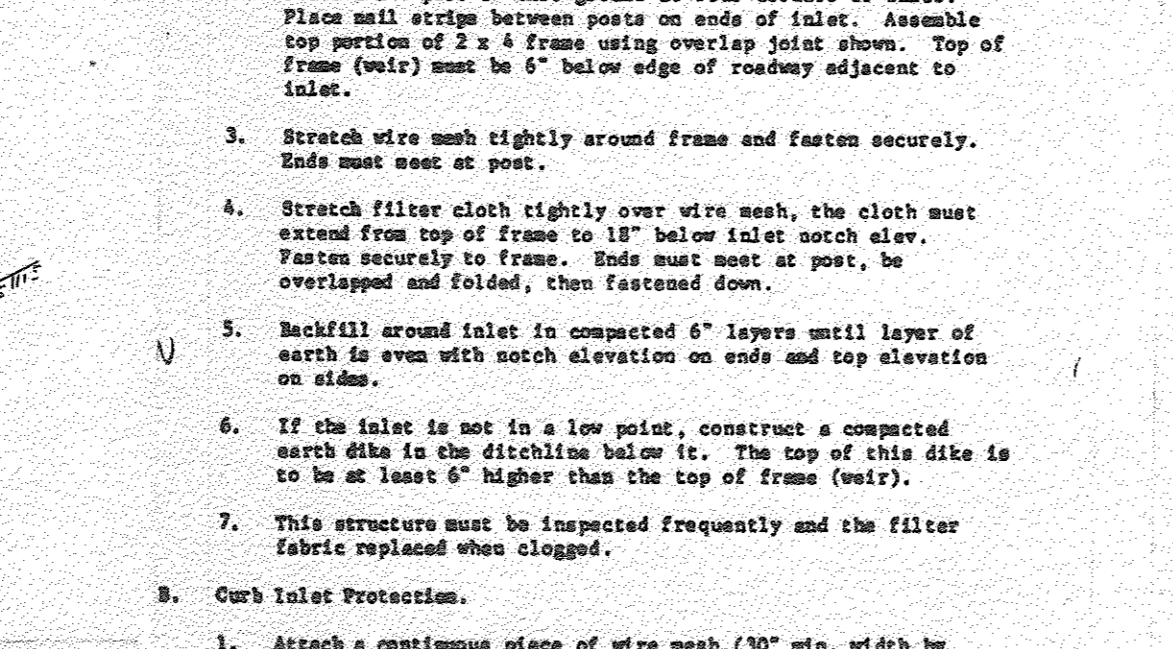
INLET SEDIMENT TRAP NO. 1
NO SCALE



CONSTRUCTION SPECIFICATIONS

1. Materials
 - A. Wooden frame to be constructed of 2" x 4" construction grade lumber.
 - B. Wire mesh must be of sufficient strength to support filter fabric, and stone for curb inlets, with water fully impounded against it.
 - C. Filter cloth must be of a type approved for this purpose; resistant to sunlight with sieve size, 100, 40-85, to allow sufficient passage of water and removal of sediment.
 - D. Stone to be 2" in size and clean, since fines would clog the cloth.
2. Procedure
 - A. Weir, ditchline or yard inlet protection.
 1. Excavate completely around inlet to a depth of 18" below notch elevation.
 2. Drive 2 x 4 post 1' into ground at four corners of inlet. Place nail string between posts on ends of inlet. Assemble top portion of 2 x 4 frame using overlap joint above. Top of frame (weir) must be 6" below edge of roadway adjacent to inlet.
 3. Stretch wire mesh tightly around frame and fasten securely. Ends must meet at post.
 4. Stretch filter cloth tightly over wire mesh, the cloth must extend from top of frame to 18" below inlet notch elev. Fasten securely to frame. Ends must meet at post, be overlapped and folded, then fastened down.
 5. Backfill around inlet in compacted 6" layers until layer of earth is even with notch elevation on ends and top elevation on sides.
 6. If the inlet is not in a low point, construct a compacted earth dike in the ditchline below it. The top of this dike is to be at least 4" higher than the top of frame (weir).
 7. This structure must be inspected frequently and the filter fabric replaced when clogged.
 - B. Curb Inlet Protection.
 1. Attach a continuous piece of wire mesh (30" min. width by three length plus 4") to the 2" x 4" wire (measuring throat length plus 2") above on the standard drawing.
 2. Place a piece of approved filter cloth (40-85 sieve) of the same dimensions as the wire mesh over the wire mesh and securely attach to the 2" x 4" weir.
 3. Securely nail the 2" x 4" weir to 9" long vertical spacers to be located between the weir and inlet face (max. 6" apart).
 4. Place the assembly against the inlet throat and nail (minimum 2" lengths of 2" x 4" to the top of the weir at spacer locations. These 2" x 4" anchors shall extend across the inlet top and be held in place by sandbags or alternate weight.
 5. The assembly shall be placed so that the end spacers are a minimum 1' beyond both ends of the throat opening.
 6. From the wire mesh and filter cloth to the concrete gutter and against the face of curb on both sides of the inlet. Place clean 2" stone over the wire mesh and filter fabric in such a manner as to prevent water from entering the inlet under or around the filter cloth.
 7. This type of protection must be inspected frequently and the filter cloth and stone replaced when clogged with sediment.
 8. Assure that storm flow does not bypass inlet by installing temporary earth or asphalt dikes directing flow into inlet.

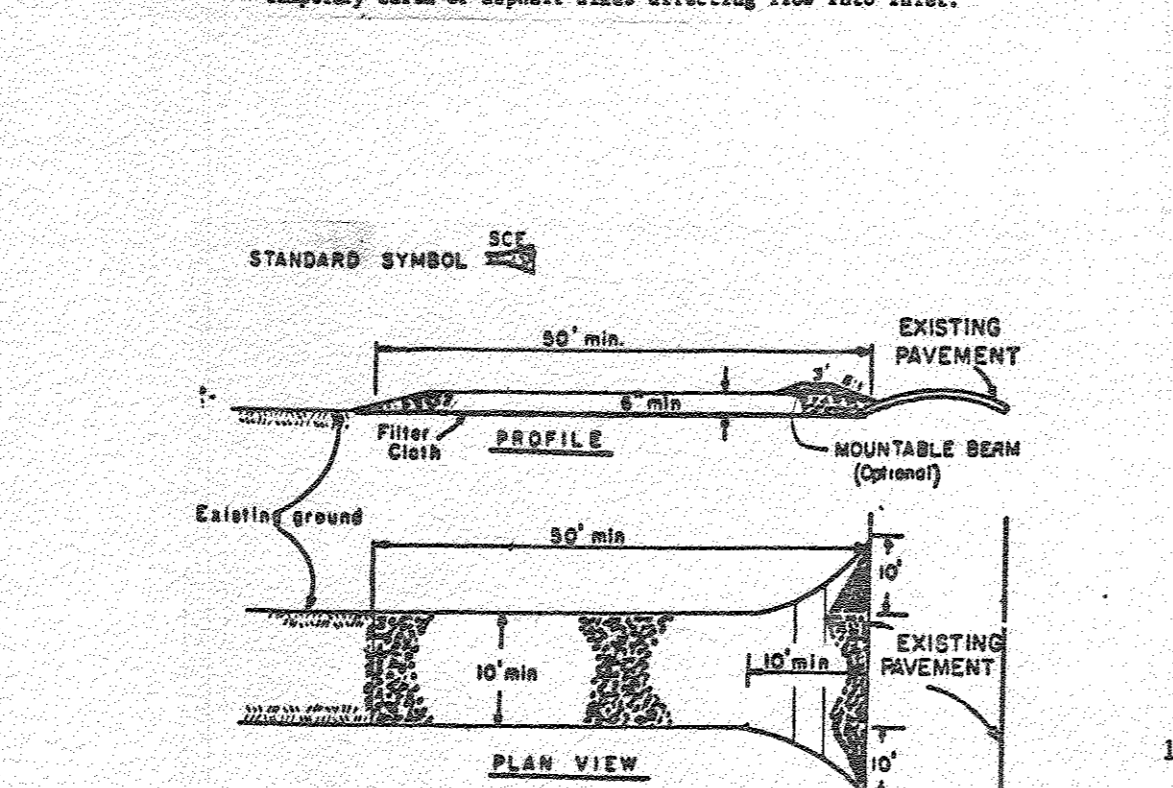
STONE FILTER INLET PROTECTION
NO SCALE



CONSTRUCTION SPECIFICATIONS

1. Stone Size - Use 2" stone, or reclaimed or recycled concrete equivalent.
2. Length - As required, but not less than 30 feet (except on a single residence lot where a 30 foot minimum length would apply).
3. Thickness - Not less than six (6) inch top of frame (weir).
4. Width - Ten (10) foot minimum, but not less than the full width at points where ingress or egress occurs.
5. Filter Cloth - Will be placed over the entire area prior to placing of stone. Filter will not be required on a single family residence lot.
6. Surface Meter - All surface water flowing or diverted toward construction entrances shall be piped across the entrance. If piping is impractical, a mountable beam with 5% slope will be permitted.
7. Maintenance - The entrance shall be maintained in a condition which will prevent tracking or flowing of sediment onto public rights-of-way. This may require periodic top dressing with additional stone as conditions demand and/or cleaning of or repairs used to trap sediment. All sediment spilled, dropped, washed or tracked onto public rights-of-way must be removed immediately.
8. Washing - Wheels shall be cleaned to remove sediment prior to entrance onto public rights-of-way. When washing is required, it shall be done on an area stabilized with stone and which drains into an approved sediment trapping device.
9. Periodic inspection and needed maintenance shall be provided after each rain.

EMBRANKMENT SECTION THRU RISER
NO SCALE



CONSTRUCTION SPECIFICATIONS

1. Area under embankment shall be cleared, grubbed and stripped of any vegetation and root mat. The pool area shall be cleared.
2. The fill material for the embankment shall be free of roots or other woody vegetation as well as oversized stones, rocks, organic material, or other objectionable material. The embankment shall be compacted by traversing with equipment while it is being constructed.
3. Volume of sediment storage shall be 1800 cubic feet per acre of contributory drainage.
4. Sediment shall be removed and trap restored to its original dimensions when the sediment has accumulated to 1/2 the design depth of the trap. Removed sediment shall be deposited in a suitable area and in such a manner that it will not erode.
5. The structure shall be inspected after each rain and repairs made as needed.
6. Construction operations shall be carried out in such a manner that erosion and water pollution are minimized.
7. The structure shall be removed and area stabilized when the drainage area has been properly stabilized.
8. All fill slopes shall be 2:1 or flatter; cut slopes 1:1 or flatter.
9. All pipe connections shall be watertight.
10. The top 2/3 of the riser shall be perforated with one (1) inch diameter holes or slits spaced six(6) inches vertically and horizontally placed in the concave portion of pipe. No holes will be allowed within six(6) inches of the horizontal barrel.
11. The riser shall be wrapped with 1/4 to 1/2 inch hardware cloth wire then wrapped with filter cloth (having an equivalent sieve size of 40 - 80). The filter cloth shall extend six (6) inches above the highest hole and six (6) inches below the lowest hole. Where ends of filter cloth come together, they shall be overlapped, folded and stapled to prevent bypass.
12. Straps or connecting bands shall be used to hold the filter cloth and wire fabric in place. They shall be placed at the top and bottom of the cloth.
13. Fill material around the pipe spillway shall be hand compacted in four(4) inch layers. A minimum of two (2) feet of hand-compacted backfill shall be placed over the pipe spillway before crossing it with construction equipment.
14. The riser shall be anchored with either a concrete base or steel plate base to prevent flotation. For concrete bases the depth shall be 12 inches with the riser embedded nine (9) inches. A 1/4 inch minimum thickness steel plate shall be attached to the riser by a continuous weld around the bottom to form a watertight connection and then place two (2) feet of stone, gravel, or tamped earth on the plate.

STABILIZED CONSTRUCTION ENTRANCE
NO SCALE

PERMANENT SEEDING NOTES

Apply to graded or cleared areas not subject to immediate further disturbance where a permanent long-lived vegetative cover is needed.

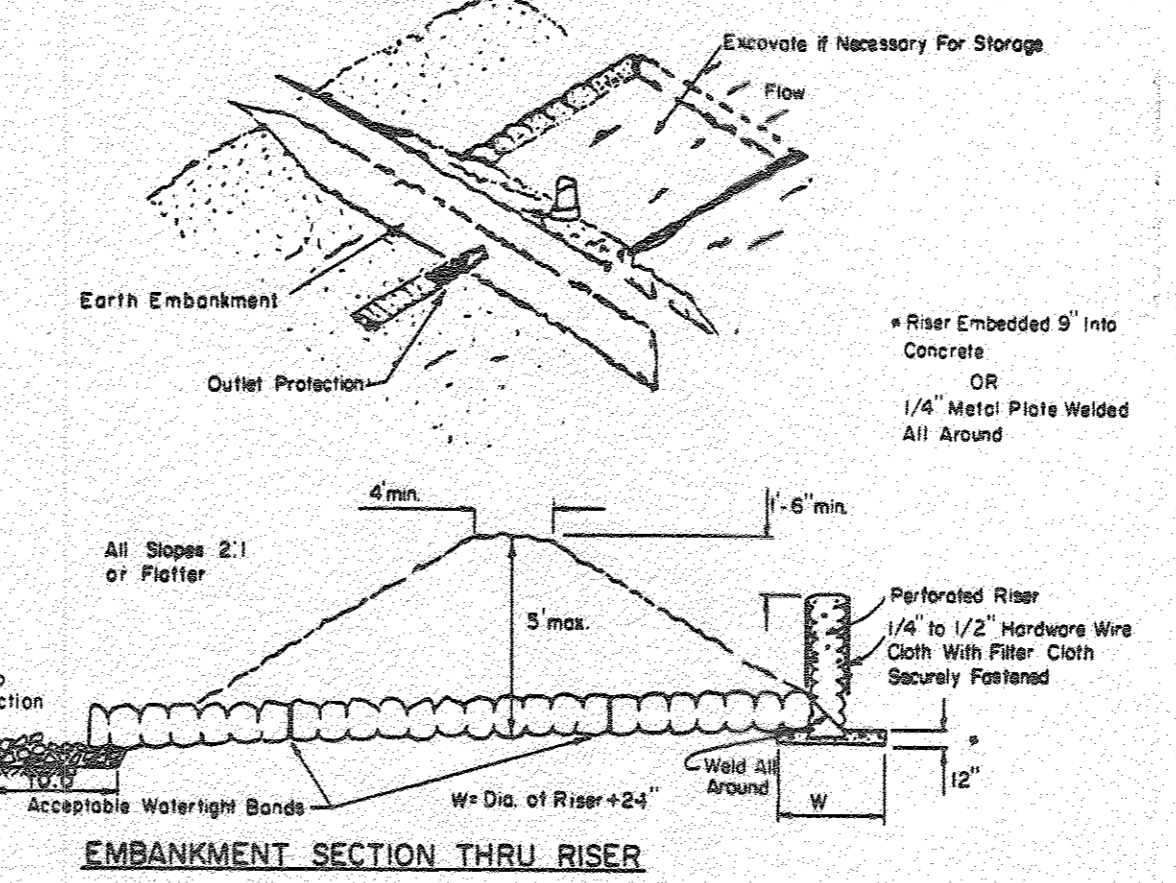
Seedbed Preparation: Loosen upper three inches of soil by raking, discing or other acceptable means before seeding.

Soil Amendments: Apply 0-20-20 fertilizer at the rate of 600 lbs. per acre. Harrow or disc lime and 0-20-20 fertilizer into the soil to a minimum depth of 3". Lawns or high maintenance areas will be dragged and leveled with a York rake. At the time of seeding, apply 400 lbs. of 30-0-0 ureaform fertilizer and 500 lbs. of 10-20-20 or equivalent fertilizer per acre.

Seeding: For the periods March 1 thru April 30, and August 1 thru October 15, seed with 40 lbs. per acre (1 lb/1000 sq.ft.) of a mixture of certified 'Merion' Kentucky bluegrass; common Kentucky bluegrass @ 40 lbs. per acre (1 lb./1000 sq.ft.) and Red Fescue, Pennlaw or Jamestown @ 20 lbs. per acre (0.5 lb./1000 sq.ft.) for the period May 1 thru July 31, seed with 40-40-20 mix as specified above and 2 lbs. per acre (0.05 lbs./1000 sq.ft.) of weeping lovegrass. During the period of October 16 thru February 28, protect site by: (Option 1) 2 tons per acre of well-anchored straw mulch and seed as soon as possible in the spring. (Option 2) Use sod. (Option 3) Seed with 40-40-20 mix specified above and mulch with 2 tons/acre well-anchored straw.

Mulching: Apply 1 1/2 to 2 tons per acre (70 to 90 lbs./1000 sq.ft.) of unrotted small grain straw immediately after seeding. Anchor mulch immediately after application using mulch anchoring tool or 218 gallons per acre (5 gal./1000 sq.ft.) of emulsified asphalt on flat areas. On slopes 8 feet or higher, use 348 gallons per acre (8 gal./1000 sq.ft.) for anchoring.

Maintenance: Inspect all seeded areas and make needed repairs, replacements and reseedings.



EMBRANKMENT SECTION THRU RISER
NO SCALE

SIZES OF PIPE NEEDED

Barrel Diameter 18"
Riser Diameter 21"

CONSTRUCTION SPECIFICATION FOR ST-1

1. Area under embankment shall be cleared, grubbed and stripped of any vegetation and root mat. The pool area shall be cleared.
2. The fill material for the embankment shall be free of roots or other woody vegetation as well as oversized stones, rocks, organic material, or other objectionable material. The embankment shall be compacted by traversing with equipment while it is being constructed.
3. Volume of sediment storage shall be 1800 cubic feet per acre of contributory drainage.
4. Sediment shall be removed and trap restored to its original dimensions when the sediment has accumulated to 1/2 the design depth of the trap. Removed sediment shall be deposited in a suitable area and in such a manner that it will not erode.
5. The structure shall be inspected after each rain and repairs made as needed.
6. Construction operations shall be carried out in such a manner that erosion and water pollution are minimized.
7. The structure shall be removed and area stabilized when the drainage area has been properly stabilized.
8. All fill slopes shall be 2:1 or flatter; cut slopes 1:1 or flatter.
9. All pipe connections shall be watertight.
10. The top 2/3 of the riser shall be perforated with one (1) inch diameter holes or slits spaced six(6) inches vertically and horizontally placed in the concave portion of pipe. No holes will be allowed within six(6) inches of the horizontal barrel.
11. The riser shall be wrapped with 1/4 to 1/2 inch hardware cloth wire then wrapped with filter cloth (having an equivalent sieve size of 40 - 80). The filter cloth shall extend six (6) inches above the highest hole and six (6) inches below the lowest hole. Where ends of filter cloth come together, they shall be overlapped, folded and stapled to prevent bypass.
12. Straps or connecting bands shall be used to hold the filter cloth and wire fabric in place. They shall be placed at the top and bottom of the cloth.
13. Fill material around the pipe spillway shall be hand compacted in four(4) inch layers. A minimum of two (2) feet of hand-compacted backfill shall be placed over the pipe spillway before crossing it with construction equipment.
14. The riser shall be anchored with either a concrete base or steel plate base to prevent flotation. For concrete bases the depth shall be 12 inches with the riser embedded nine (9) inches. A 1/4 inch minimum thickness steel plate shall be attached to the riser by a continuous weld around the bottom to form a watertight connection and then place two (2) feet of stone, gravel, or tamped earth on the plate.

PIPE OUTLET SEDIMENT TRAP #2
NO SCALE

SEDIMENT CONTROL NOTES

1. A minimum of 24 hours notice must be given to the Howard County Office of Inspections and Permits prior to the start of any construction (992-2437)
2. All vegetative and structural practices are to be installed according to the provisions of this plan and in accordance with the 1983 MARYLAND STANDARDS AND SPECIFICATIONS FOR SOIL EROSION AND SEDIMENT CONTROL.
3. Following initial soil disturbance or redistribution, permanent or temporary stabilization shall be completed within: a) 7 calendar days for all perimeter sediment control structures, dikes, perimeter slopes and all slopes greater than 3:1, b) 14 days as to all other disturbed or graded areas on the project site.
4. All sediment traps/basins shown must be fenced and warning signs posted around their perimeter in accordance with Vol. 1, Chapter 12, of the HOWARD COUNTY DESIGN MANUAL, Storm Drainage.
5. All disturbed areas must be stabilized within the time period specified above in accordance with the 1983 MARYLAND STANDARDS AND SPECIFICATIONS FOR SOIL EROSION AND SEDIMENT CONTROL for permanent seedings (Sec. 51) sod (Sec. 54), temporary seeding (Sec. 50) and mulching (Sec. 52). Temporary stabilization with mulch alone can only be done when recommended seeding dates do not allow for proper germination and establishment of grasses.
6. All sediment control structures are to remain in place and are to be maintained in operative condition until permission for their removal has been obtained from the Howard County Sediment Control Inspector.
7. Site Analysis:

Total Area of Site	8.65 acres
Area Disturbed	8.3 acres
Area to be roofed or paved	0.2 acres
Area to be vegetatively stabilized	2.1 acres
Total Cut	10000 Cu. yds.
Total Fill	21000 Cu. yds.
TOPSOIL	2000 Cu. yds.
8. Any sediment control practice which is disturbed by grading activity for placement of utilities must be repaired on the same day of disturbance.
9. Additional sediment controls must be provided, if deemed necessary by the Howard County DPW sediment control inspector.
10. Site grading will begin only after all perimeter sediment control measures have been installed and are in a functioning condition.
11. Sediment will be removed from traps when its depth reaches the clean out elevation shown on the plans.

TEMPORARY SEEDING NOTES

Apply to graded or cleared areas likely to be redistributed where a short-term vegetative cover is needed.

Seedbed Preparation: Loosen upper three inches of soil by raking, discing or other acceptable means before seeding.

Soil Amendments: Apply 600 lbs. per acre 10-10-10 fertilizer (14 lbs./1000 sq.ft.) where soil is highly acidic, apply dolomitic limestone at the rate of 1 ton per acre.

Seeding: For periods March 1 thru April 30 and from August 15 thru November 15, seed with 140 lbs. per acre of annual rye (3.2 lbs./1000 sq.ft.). For the period May 1 thru August 14, seed with 3 lbs. per acre of weeping lovegrass (0.7 lbs./1000 sq.ft.). For the period November 16 thru February 28, protect site by applying 2 tons per acre of well anchored straw mulch and seed as soon as possible in the spring, or use sod.

Mulching: Apply 1 1/2 to 2 tons per acre (70 to 90 lbs./1000 sq.ft.) of unrotted small grain straw immediately after seeding. Anchor mulch immediately after application using mulch anchoring tool or 218 gal. per acre (5 gal./1000 sq.ft.) of emulsified asphalt on flat areas. On slopes 8 ft. or higher, use 348 gal. per acre (8 gal./1000 sq.ft.) for anchoring.

Refer to the 1983 MARYLAND STANDARDS AND SPECIFICATIONS FOR SOIL EROSION AND SEDIMENT CONTROL for rate and methods not covered.

SEE UPDATED SEDIMENT CONTROL DETAILS ON SHEET 15.

MORRIS & RITCHE ASSOCIATES, INC.
ENGINEERS, PLANNERS, SURVEYORS AND LANDSCAPE ARCHITECTS
1630 PARK CENTER DRIVE - LAUREL, MD 20707
(410) 782-9762 / (301) 775-5897 FAX: (410) 782-7995
M&R.COM

PROFESSIONAL CERTIFICATION:
I HEREBY CERTIFY THAT THESE DOCUMENTS WERE PREPARED OR APPROVED BY ME, AND THAT I AM A FULLY LICENSED PROFESSIONAL ENGINEER UNDER THE LAWS OF THE STATE OF MARYLAND.
LICENSE NO. 29203
EXPIRATION DATE: 6-14-17

APPROVED
DIVISION OF LAND DEVELOPMENT & ZONING ADMINISTRATION
HOWARD COUNTY, MARYLAND
DATE 4-9-87
A. J. FARM

BY THE DEVELOPER:
"I/WE CERTIFY THAT ALL DEVELOPMENT AND CONSTRUCTION WILL BE DONE ACCORDING TO THIS PLAN, AND THAT ANY RESPONSIBLE PERSONNEL INVOLVED IN THE CONSTRUCTION PROJECT WILL HAVE A CERTIFICATE OF ATTENDANCE AT A DEPARTMENT OF NATURAL RESOURCES APPROVED TRAINING PROGRAM FOR THE CONTROL OF SEDIMENT AND EROSION BEFORE BEGINNING THE PROJECT."
CRYSEN CORRIDOR LIMITED PARTNERSHIP BY SIELJA CORPORATION
DEVELOPER: BERNARD R. THERIAULT DATE

BY THE ENGINEER:
"I CERTIFY THAT THIS PLAN FOR EROSION AND SEDIMENT CONTROL REPRESENTS A PRACTICAL AND WORKABLE PLAN BASED ON MY PERSONAL KNOWLEDGE OF THE SITE CONDITIONS AND THAT IT WAS PREPARED IN ACCORDANCE WITH THE REQUIREMENTS OF THE HOWARD SOIL CONSERVATION DISTRICT."
ARTHUR E. WUEGGE 4-21-87
ENGINEER: ARTHUR E. WUEGGE DATE

REVIEWED FOR HOWARD COUNTY, MARYLAND
NAME S. C. D.
AND METS TECHNICAL REQUIREMENTS
JAMES M. HELM 5-4-87
U.S. SOIL CONSERVATION SERVICE DATE

THIS DEVELOPMENT PLAN IS APPROVED FOR SOIL EROSION AND SEDIMENT CONTROL BY THE HOWARD SOIL CONSERVATION DISTRICT
STEPHEN L. HUGHES 5-4-87
HOWARD S.C.D. DATE

APPROVED: FOR PUBLIC WATER AND PUBLIC SEWERAGE SYSTEMS, HOWARD COUNTY HEALTH DEPARTMENT
JOHN R. BYRNE 5-7-87
JOHN R. BYRNE DATE

APPROVED: HOWARD COUNTY OFFICE OF PLANNING AND ZONING
DANIEL J. DOMINGO 5-8-87
PLANNING DIRECTOR DATE
JAMES W. WOODMAN 5-8-87
CHIEF, DIVISION OF LAND DEVELOPMENT AND ZONING ADMINISTRATION DATE

APPROVED: FOR PUBLIC WATER, PUBLIC SEWERAGE, STORM DRAINAGE SYSTEMS AND PUBLIC ROADS
STEPHEN J. NEWMAN 5-6-87
DIRECTOR DATE

WILLIAM S. KAY 5-4-87
CHIEF, BUREAU OF ENGINEERING DATE
1/2017 REPLACED RETAINING WALL NOS. 1,2,3, AND 4 WITH RETAINING WALL NOS. 1A, 2A, 3A, 4A AND 4B REVISION

OWNER/DEVELOPER
CRYSEN CORRIDOR LIMITED PARTNERSHIP
710 AMERICAN CITY BUILDING
COLUMBIA, MARYLAND 21045

PROJECT:
CORRIDOR INDUSTRIAL PARK SECTION I PARCEL O
AREA TAX MAP 47 PARCEL O
SDR 85-153 CORRIDOR INDUSTRIAL PARK
6TH ELECTION DISTRICT
HOWARD COUNTY, MARYLAND
TITLE: SEDIMENT CONTROL NOTES & DETAILS

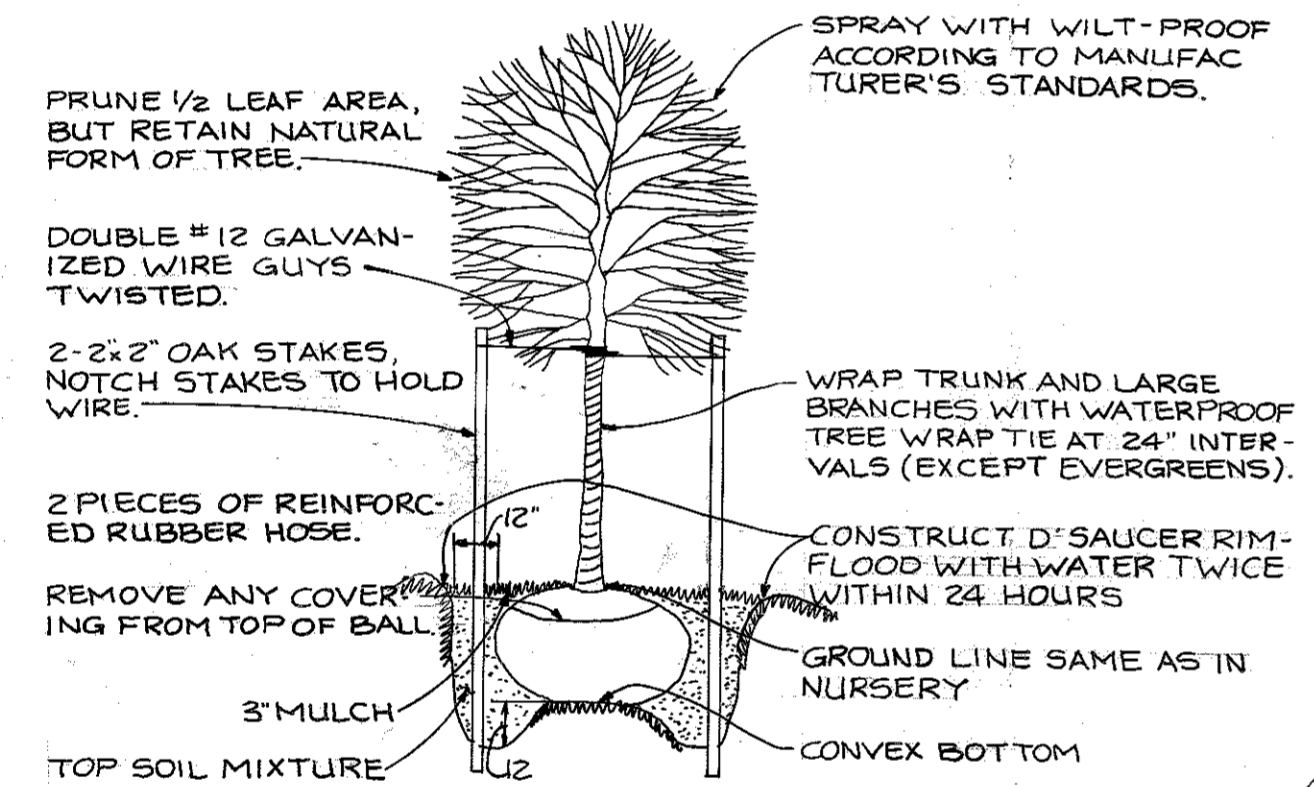
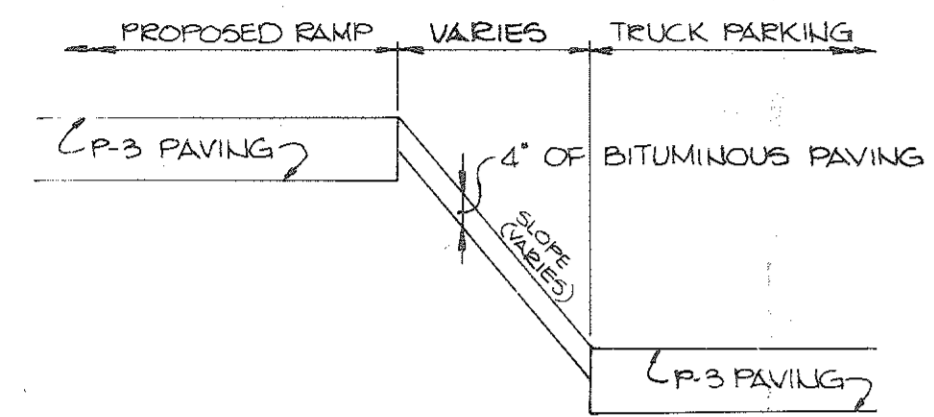
THE RIEMER GROUP, INC.
A LAND PLANNING, DESIGN & CIVIL ENGINEERING FIRM
3105 HUNTER PARK DRIVE, ELLICOTT CITY, MD. 21043 301.641-2690

4-27-87 DATE
DESIGNED BY: L.J.D.
DRAWN BY: D.A.M.
PROJECT NO: 015000
DATE: 3/20/85
SCALE: AS SHOWN
DRAWING NO. G OF 115

STRUCTURE SCHEDULE

NO.	TYPE	LOCATION	INV/IN	INV/OUT	ELEV.	T.C.	REMARKS
1-1	'S' COMB. INLET	SEE PLAN	145.60	144.44	158.6	Ho.Co.Sted. SD 4.32	
1-2	'K' INLET	SEE PLAN	147.04	147.64	*156.0	Ho.Co.Sted. SD 4.12	
1-3	'K' INLET	SEE PLAN	152.00	151.80	*156.0	Ho.Co.Sted. SD 4.12	
1-4	'A-10' INLET	SEE PLAN	---	147.68	154.6	Ho.Co.Sted. SD 4.02	
E-1	30" CONCRETE END SECTION	SEE PLAN	---	135.90	---	Ho.Co.Sted. SD 5.51	
E-2	15" CONCRETE END SECTION	SEE PLAN	---	136.50	---	Ho.Co.Sted. SD 5.51	
M-1	5'-0" DIAMETER MANHOLE	SEE PLAN	136.28	136.08	*141.8	Ho.Co.Sted. G 5.13	
M-2	5'-0" DIAMETER MANHOLE	SEE PLAN	146.28	146.78	*160.36	Ho.Co.Sted. G 5.13	
M-3	5'-0" DIAMETER MANHOLE	SEE PLAN	150.68	150.18	158.0	Ho.Co.Sted. G 5.13	
T-5	'K' INLET	SEE PLAN	---	152.62	*157.68	Ho.Co.Sted. SD-412	
M-5	4'-0" DIAMETER MANHOLE	SEE PLAN	139.46	139.21	*145.5	Ho.Co.Sted. G 5.12	

* ELEVATIONS AT RIM OR TOP OF GRATE.
 ** ELEVATIONS AT SWALE INVERT

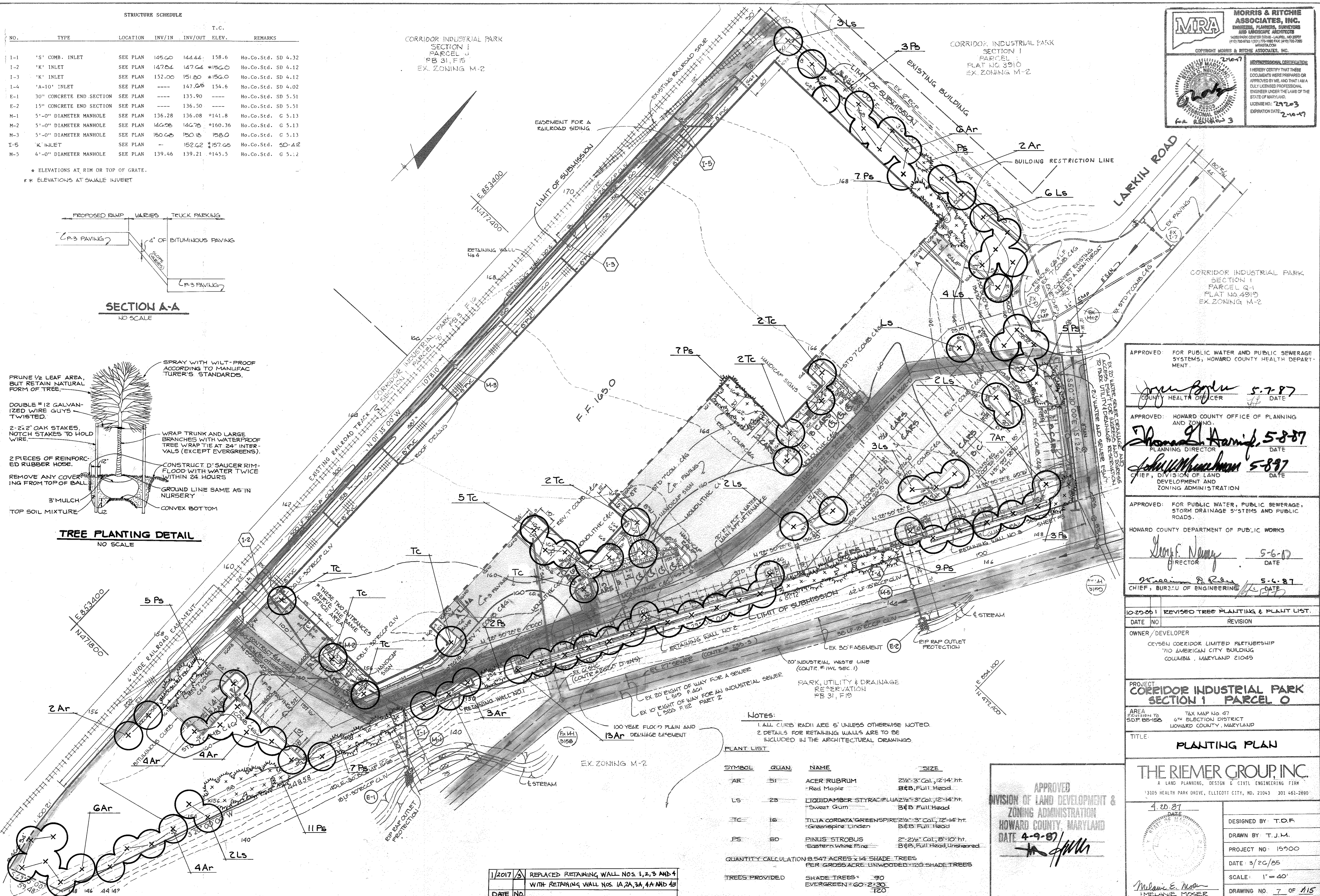


CORRIDOR INDUSTRIAL PARK
 SECTION I
 PARCEL J
 PB 31, F15
 EX. ZONING M-2

CORRIDOR INDUSTRIAL PARK
 SECTION I
 PARCEL O
 PLAT NO 3910
 EX. ZONING M-2

MRA
 MORRIS & RITCHE ASSOCIATES, INC.
 ENGINEERS, PLANNERS, SURVEYORS
 AND LANDSCAPE ARCHITECTS
 1480 PARK CENTER DRIVE - LAUREL, MD 20707
 (410) 788-9700 / (301) 778-4800 FAX: (410) 788-7285
 WASHINGTON

PROFESSIONAL CERTIFICATION
 I HEREBY CERTIFY THAT THESE
 DOCUMENTS WERE PREPARED OR
 APPROVED BY ME, AND THAT I AM A
 DULY LICENSED PROFESSIONAL
 ENGINEER UNDER THE LAWS OF THE
 STATE OF MARYLAND.
 LICENSE NO. 217203
 EXPIRATION DATE: 2-16-17



APPROVED FOR PUBLIC WATER AND PUBLIC SEWERAGE SYSTEMS; HOWARD COUNTY HEALTH DEPARTMENT.
 John Boyle 5-7-87
 COUNTY HEALTH OFFICER DATE

APPROVED: HOWARD COUNTY OFFICE OF PLANNING AND ZONING.
 Thomas G. Harris 5-8-87
 PLANNING DIRECTOR DATE
 John W. Murchison 5-8-87
 CHIEF, DIVISION OF LAND DEVELOPMENT AND ZONING ADMINISTRATION DATE

APPROVED: FOR PUBLIC WATER, PUBLIC SEWERAGE, STORM DRAINAGE SYSTEMS AND PUBLIC ROADS.
 HOWARD COUNTY DEPARTMENT OF PUBLIC WORKS
 Greg F. Namy 5-6-87
 DIRECTOR DATE
 William R. Rea 5-6-87
 CHIEF, BUREAU OF ENGINEERING DATE

DATE	NO.	REVISION
10-20-05	1	REVISED TREE PLANTING & PLANT LIST.

OWNER/DEVELOPER
 CRYSEN CORRIDOR LIMITED PARTNERSHIP
 710 AMERICAN CITY BUILDING
 COLUMBIA, MARYLAND 21045

PROJECT
**CORRIDOR INDUSTRIAL PARK
 SECTION I
 PARCEL O**

AREA
 REVISION 158
 SDP 05-158

TAX MAP No 47
 6th ELECTION DISTRICT
 HOWARD COUNTY, MARYLAND

TITLE
PLANTING PLAN

THE RIEMER GROUP, INC.
 A LAND PLANNING, DESIGN & CIVIL ENGINEERING FIRM
 13105 HEALTH PARK DRIVE, ELICOTT CITY, MD. 21043 301 461-2690

4-20-87 DATE
 DIVISION OF LAND DEVELOPMENT & ZONING ADMINISTRATION
 HOWARD COUNTY, MARYLAND
 DATE 4-9-87

DESIGNED BY: T.O.F.
 DRAWN BY: T.J.M.
 PROJECT NO: 19900
 DATE: 3/20/85
 SCALE: 1" = 40'
 DRAWING NO. 7 OF 115

NOTES:
 1. ALL CURB RADII ARE 5' UNLESS OTHERWISE NOTED.
 2. DETAILS FOR RETAINING WALLS ARE TO BE INCLUDED IN THE ARCHITECTURAL DRAWING.

PLANT LIST

SYMBOL	QUAN.	NAME	SIZE
AR	51	ACER RUBRUM Red Maple	2 1/2" - 3" Cal., 12-14' ht. B&B, Full Head
LS	23	LIQUIDAMBER STYRACIFLUA Sweet Gum	2 1/2" - 3" Cal., 12-14' ht. B&B Full Head
TC	16	TILIA CORDATA GREENSPIRE Greenspire Linden	2 1/2" - 3" Cal., 12-14' ht. B&B Full Head
PS	60	PINUS STROBUS Eastern White Pine	2" - 2 1/2" Cal., 8-10' ht. B&B, Full Head, Unsharpened

QUANTITY CALCULATION 8.547 ACRES x 14 SHADE TREES PER GROSS ACRE UNWOODED = 120 SHADE TREES
 TREES PROVIDED
 SHADE TREES = 90
 EVERGREEN = 60 - 2:30
 120

DATE	NO.	REVISION
1/2017	3	REPLACED RETAINING WALL NOS. 1, 2, 3 AND 4 WITH RETAINING WALL NOS. 1A, 2A, 3A, 4A AND 4B