

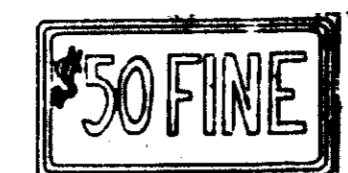


STANDARD RT-0 RESERVED PARKING SIGN

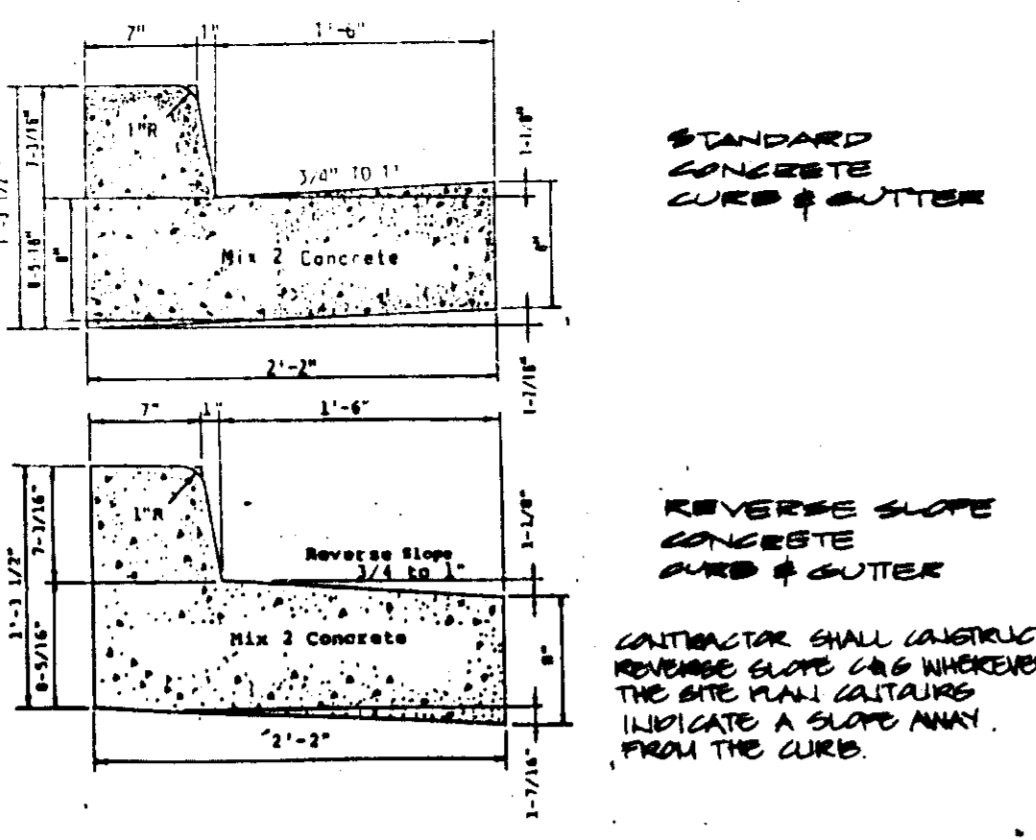
\$50 FILE SIGN
Sign to utilize an aluminum blank 6" x 12" x 0.009 inch thick with two single post mounting holes.

The text and border shall be standard green to match that on RT-0 and the background shall be reflective white. Text shall be in 2" characters.

Sign shall be mounted directly below the standard RT-0 Reserved Parking for Handicapped sign. Its bottom edge shall be not less than 7 feet above ground. If the sign is placed against a building, structure, or other location where vehicle or pedestrian traffic is not obstructed the bottom edge of sign shall be at least 6 feet but not more than 10 feet above ground.



GREEN - LEGEND AND BORDER
WHITE - UNPAVED OR BLUE BACKGROUND
WHITE - BACKGROUND



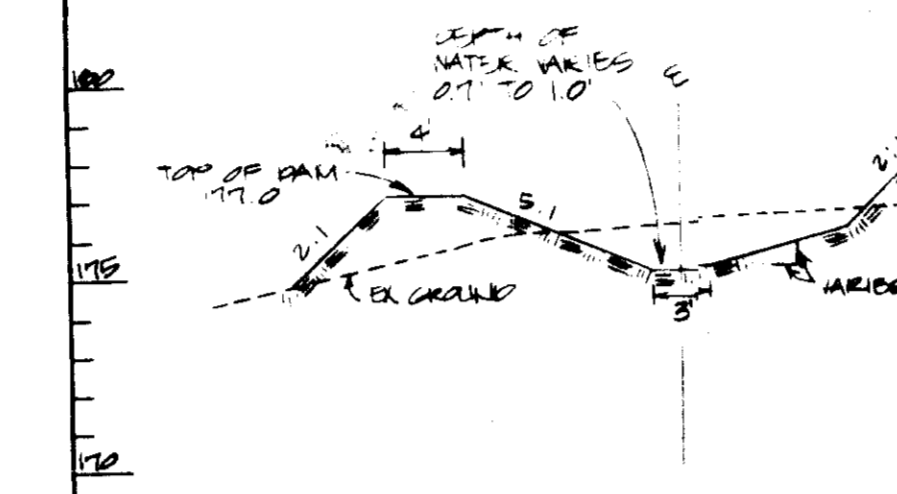
STANDARD CONCRETE CURB & GUTTER

REVERSE SLOPE CONCRETE CURB & GUTTER

CONTRACTOR SHALL CONSTRUCT REVERSE SLOPE CURB WHEREVER THE SITE PLAN INDICATES A SLOPE AWAY FROM THE CURB.

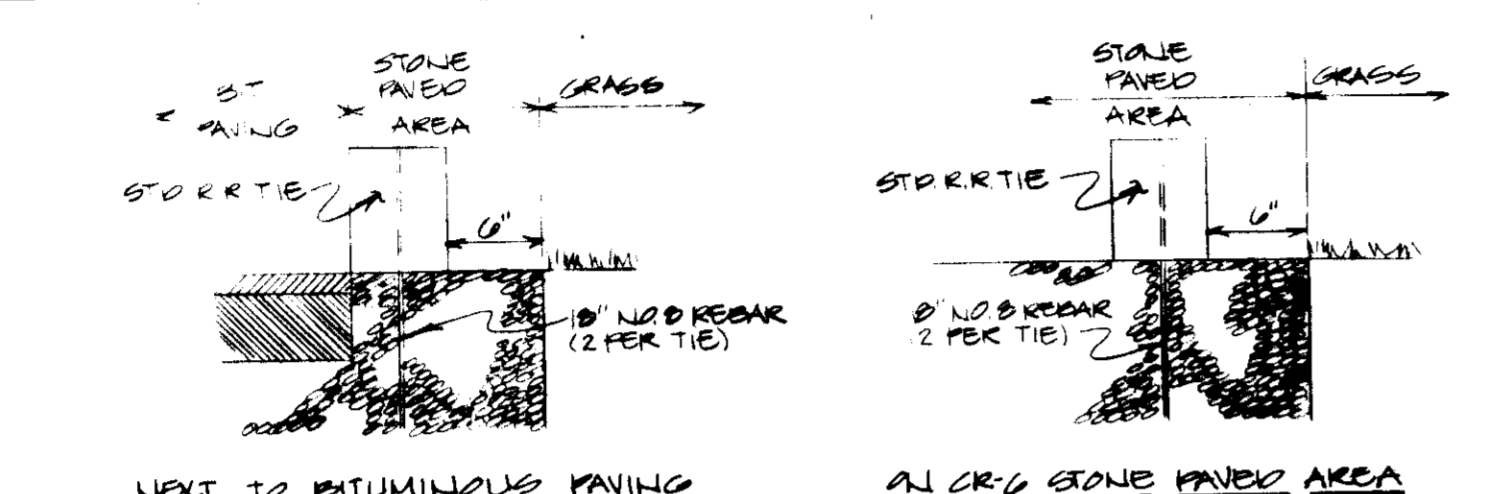
HANDICAPPED PARKING DETAIL

SCALE: HORIZ 1"=10' VERT 1"=5'



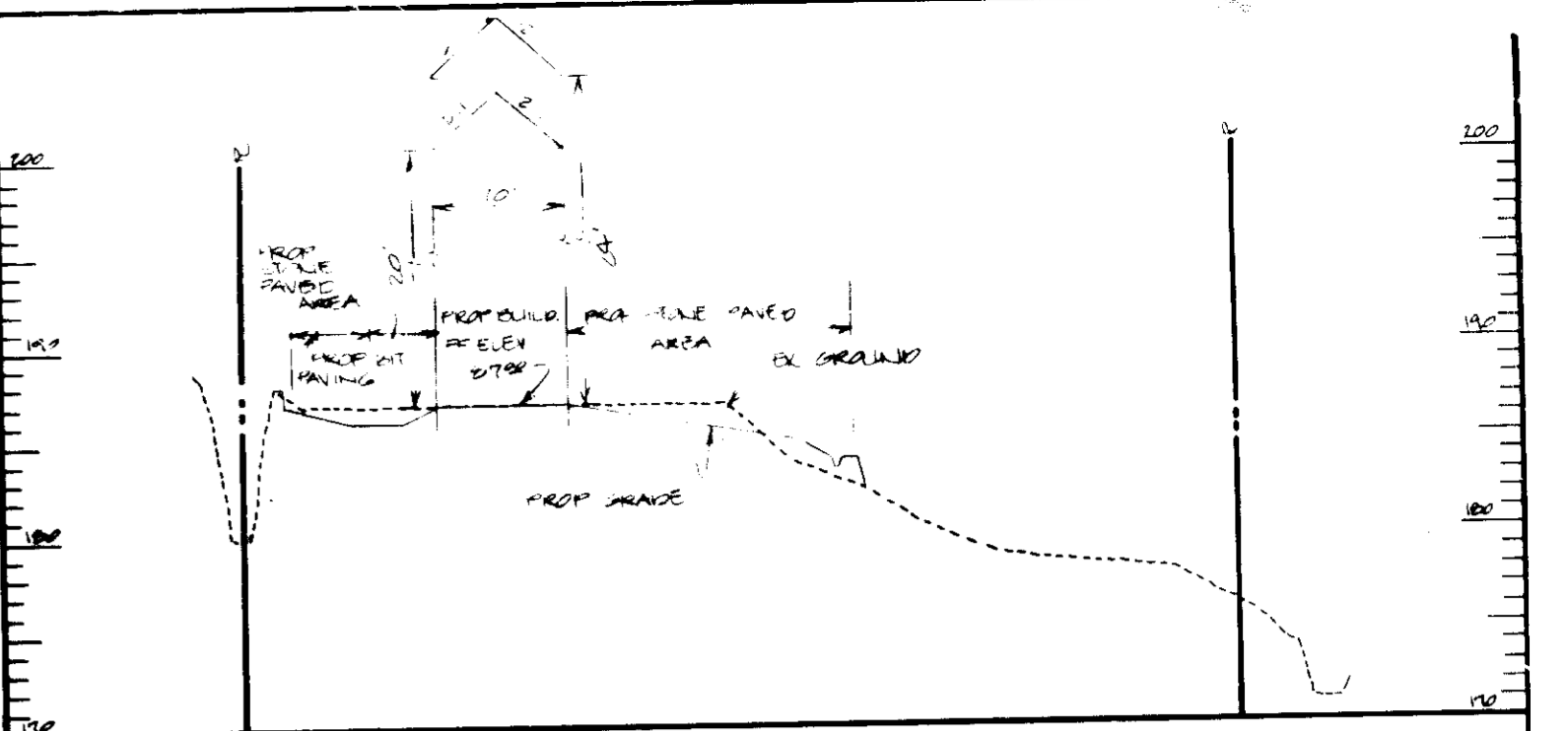
SECTION 'G-G'

SCALE: HORIZ 1"=10' VERT 1"=5'



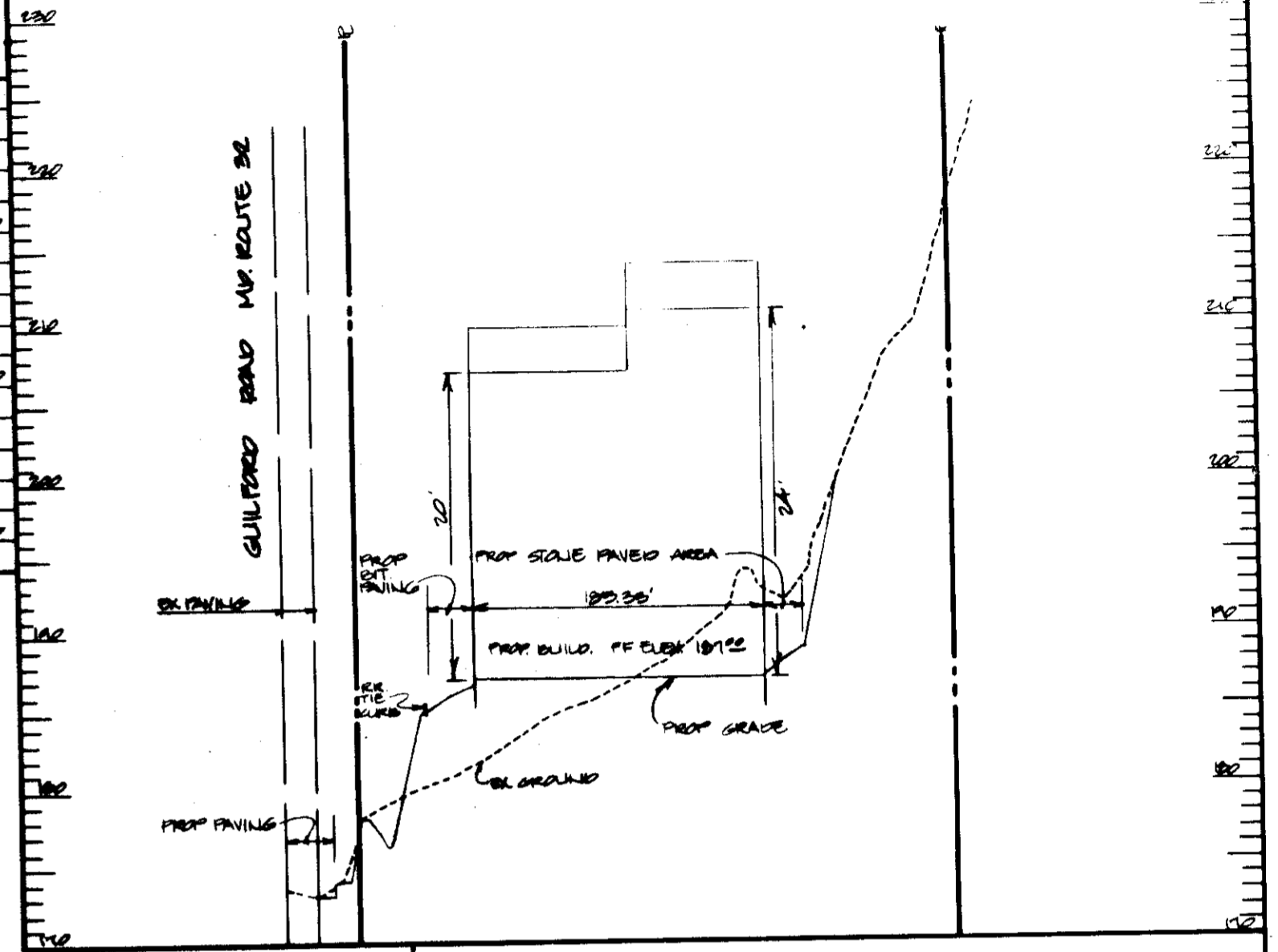
CROSS-TIE (RAILROAD TIE) CURB FASTENING DETAIL

SCALE: HORIZ 1"=10' VERT 1"=5'



SECTION 'E-E'

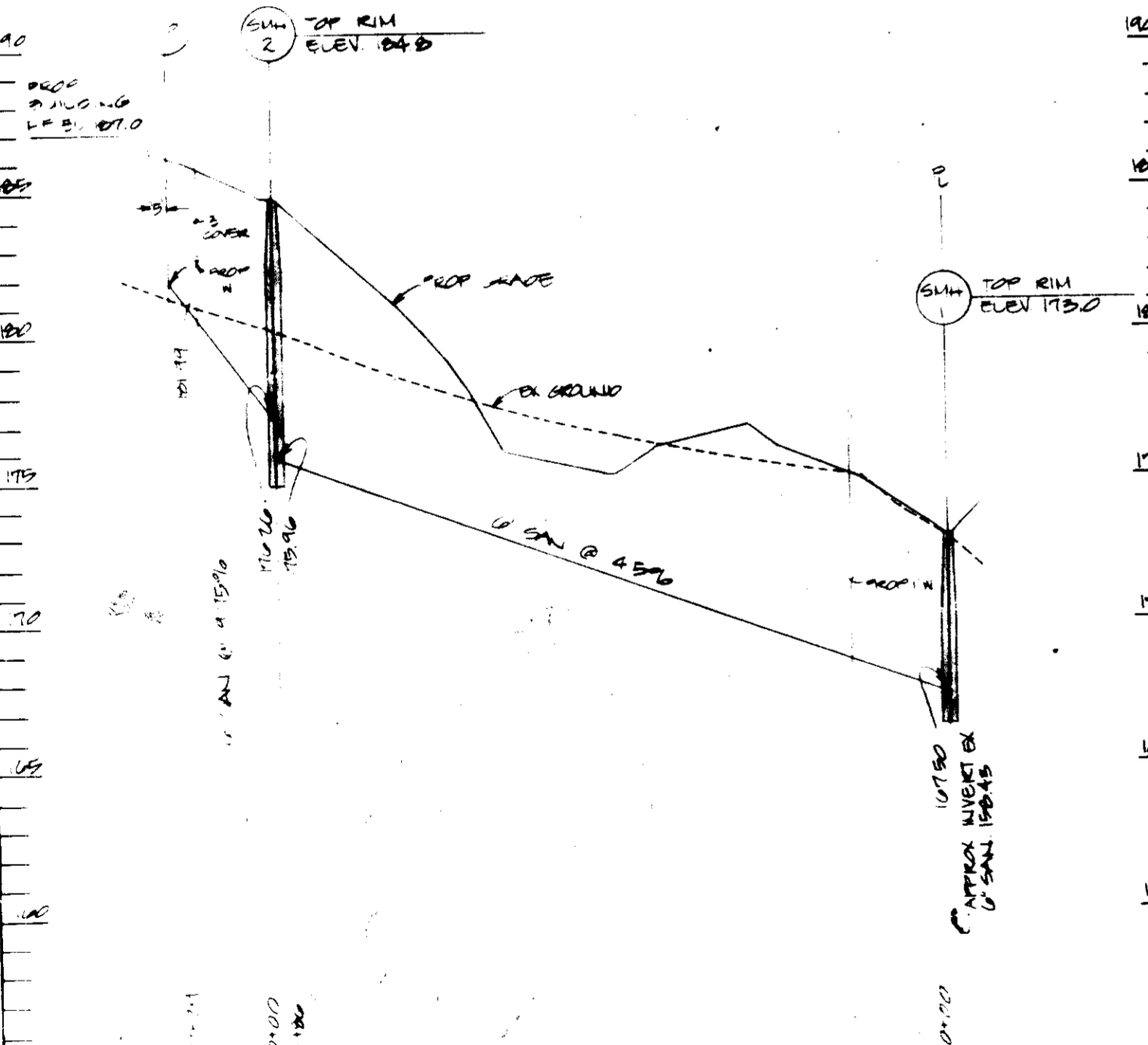
SCALE: HORIZ 1"=10' VERT 1"=10'



SECTION 'F-F'

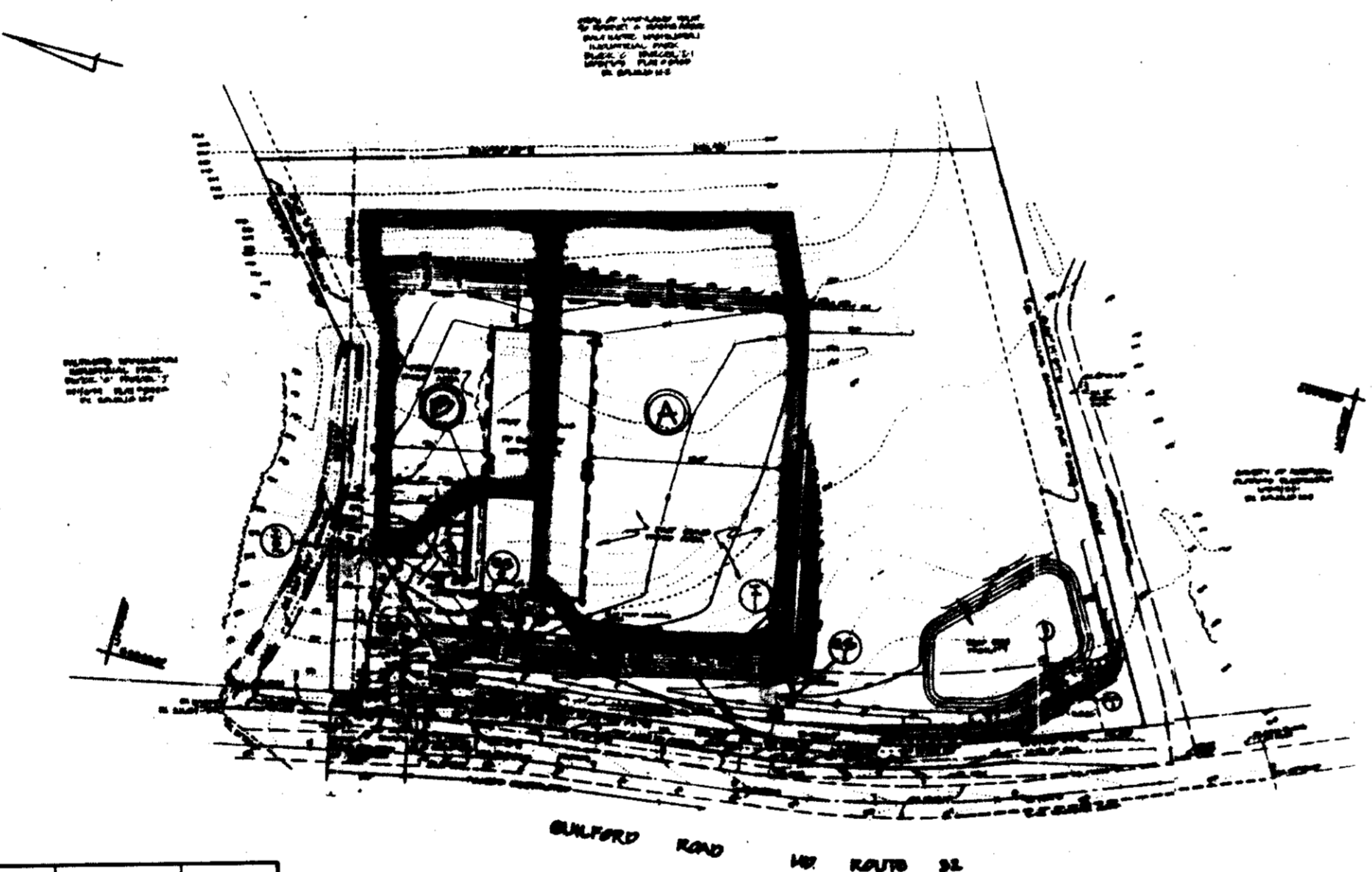
SCALE: HORIZ 1"=10' VERT 1"=10'

STATE OF MARYLAND STATE ROADS COMMISSION STANDARD CURB OPENING DETAIL CURB & GUTTER SECTION STANDARD NO. MD-640.02



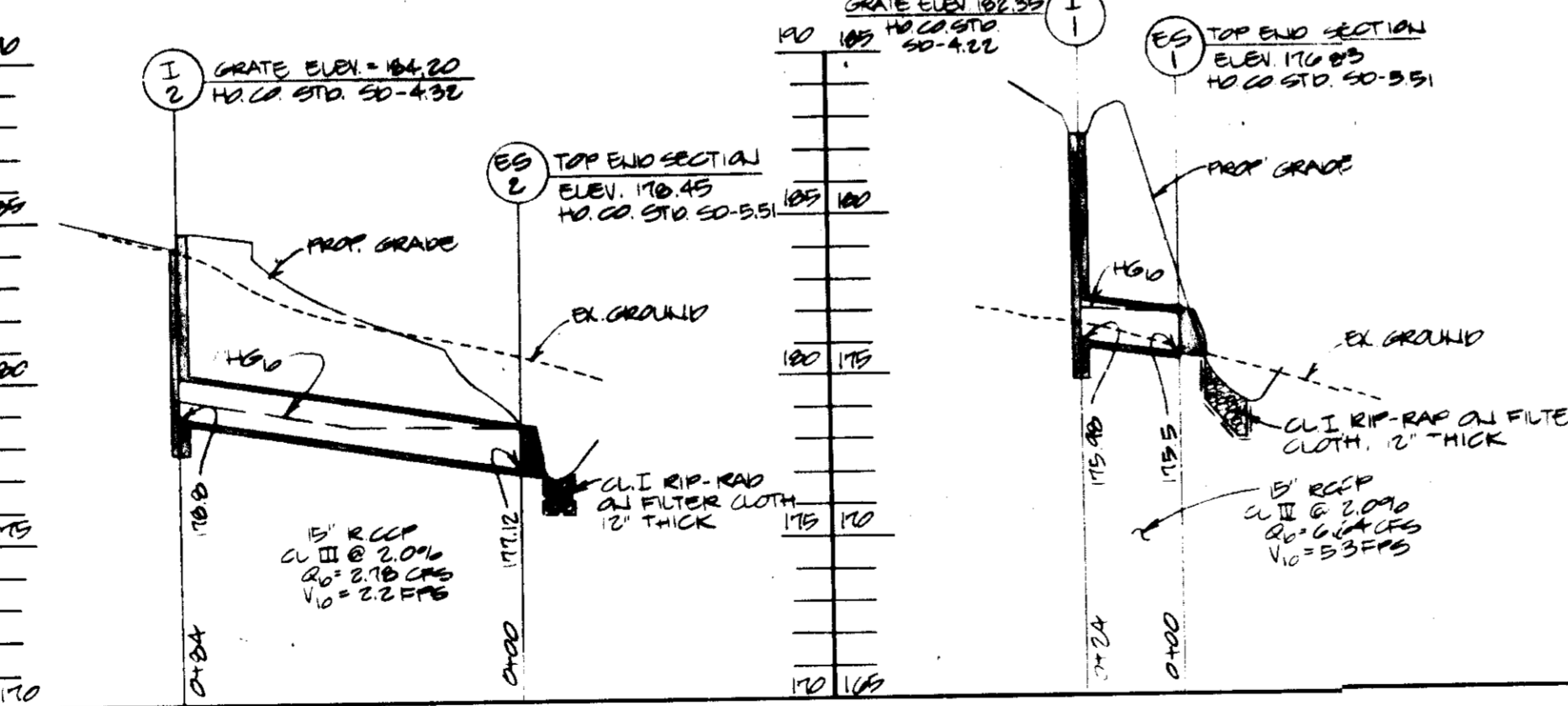
SANITARY SEWER

SCALE: HORIZ 1"=10' VERT 1"=5'



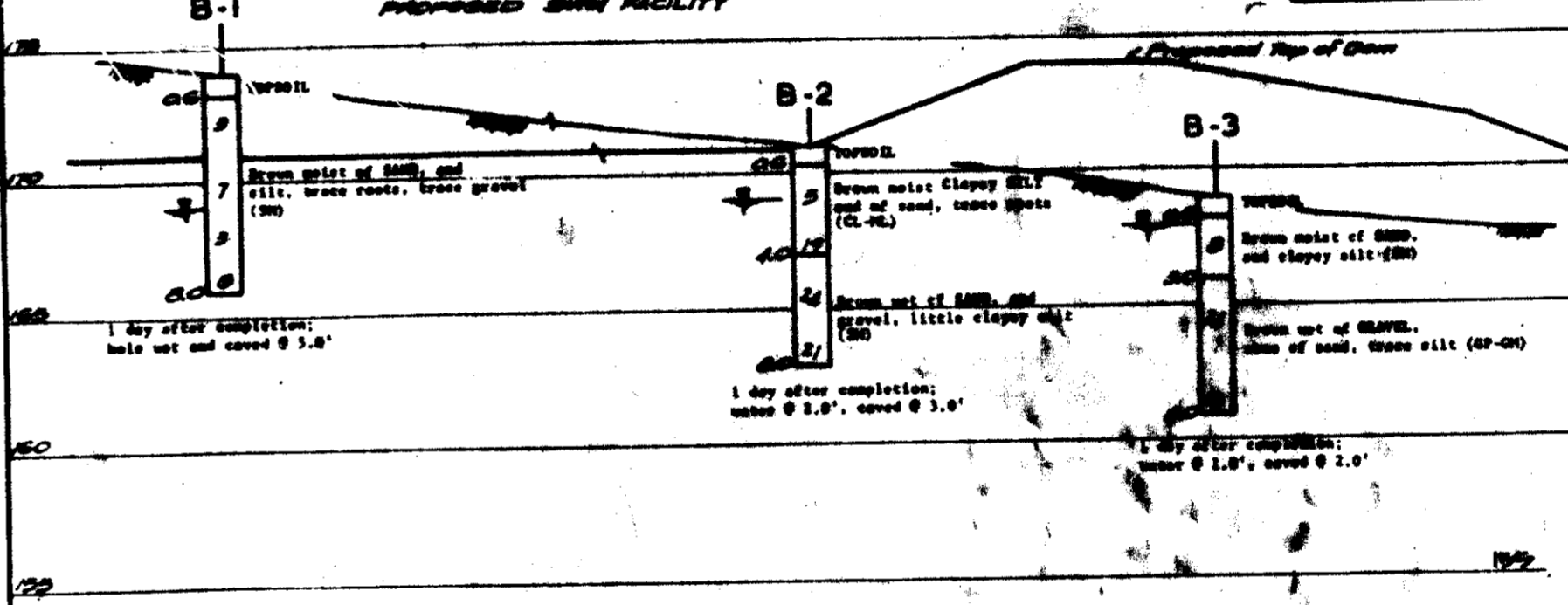
STORM DRAIN DRAINAGE AREA MAP

SCALE: 1"=100'



STORM DRAIN PROFILES

SCALE: HORIZ 1"=10' VERT 1"=5'



BORING PROFILES NOT TO SCALE

STRUCTURE SCHEDULE table with columns: NO, TYPE, Q (CFS), IN DIA, TOP GRADE ELEV, REMARKS

APPROVED DIVISION OF LAND DEVELOPMENT & ZONING ADMINISTRATION HOWARD COUNTY, MARYLAND DATE 6-11-86

APPROVED HOWARD COUNTY OFFICE OF PLANNING & ZONING... Thomas J. Hamon... DATE 7-25-86

APPROVED PUBLIC WATER AND PUBLIC SEWERAGE SYSTEM... James M. Hahn... DATE 7-22-86

APPROVED HOWARD COUNTY OFFICE OF PLANNING & ZONING... DATE 7-22-86

APPROVED HOWARD COUNTY OFFICE OF PLANNING & ZONING... DATE 7-22-86

APPROVED HOWARD COUNTY OFFICE OF PLANNING & ZONING... DATE 7-22-86

GEORGE WILLIAM STEPHENS, JR. AND ASSOCIATES, INC. CIVIL ENGINEERS & LAND SURVEYORS 303 ALLEGHEE AVENUE TOWSON, MARYLAND 21284 (301) 825-8122



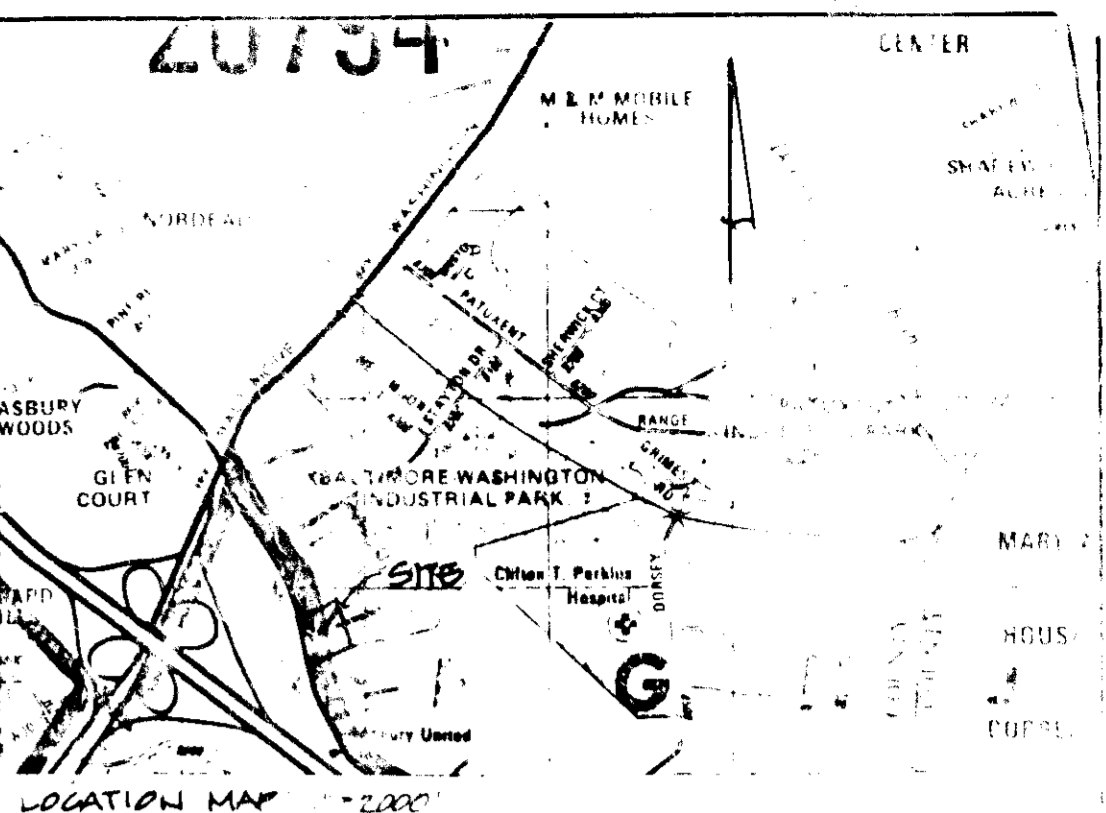
ENGINEER'S CERTIFICATE: I CERTIFY THAT THIS PLAN FOR SANITARY FACILITY CONSTRUCTION... DATE 7/7/86

OWNER: ELLIOTT & FRANTZ, INC. 1400 CHERRY HILL ROAD BALTIMORE, MD. 21225 (301) 354-1000

DEVELOPER'S CERTIFICATE: I CERTIFY THAT ALL DEVELOPMENT AND/OR CONSTRUCTION WILL BE DONE ACCORDING TO THESE PLANS... DATE 7/7/86

DESIGNED: CAH DRAWN: PL/C/AH CHECKED: [Signature]

ELLIOTT - FRANTZ BALTIMORE WASHINGTON INDUSTRIAL PARK BLOCK 'K' PARCEL 'K1' TAX MAP 40 HOWARD CO MARYLAND SCALE 1"=40' PL 0200 JANUARY 20, 1986 SHEET 3 OF 6



SITE DATA
 AREA OF SITE 3.20 ACRES
 TOTAL FLOOR AREA 18,918 SQ FT
 EXISTING USE VACANT

FLOOR AREA RATIO 0.2316
 PROPERTY REFERENCE BALTIMORE WASHINGTON INDUSTRIAL PARK
 BLOCK 'C' PARCEL 'K' PLAT # 3425 1423-429
 % OPEN SPACE 0.00%
 % BUILDING COVERAGE IN PAVING 28.33%
 AREA TO BE DISTURBED 3.47 ACRES OR 151,153 SQ FT
 AREA TO BE VEGETATIVELY STABILIZED 3.14 ACRES OR 136,667 SQ FT
 EXISTING ZONING M-2

LEGEND

- EX. GROUND
- PROP. GRADE
- TRACT OUTLINE
- KIN LINE
- MINIMUM BUILDING SETBACK LINE
- EASEMENTS
- NUMBER PARKING SPACES
- HANDICAPPED PARKING SPACE
- TYPE 'B' PAVING (TRUCK)
- STILE PAVING

THESE PLANS FOR SMALL BUILD CONSTRUCTION, SOIL EROSION AND SEDIMENT CONTROL MEET THE REQUIREMENTS OF THE HOWARD SOIL CONSERVATION DISTRICT.

Robert W. [Signature]
 APPROVED HOWARD SOIL CONSERVATION DISTRICT

PLAT NUMBER 1-1-86

HOWARD SOIL CONSERVATION DISTRICT: THE DEVELOPMENT IS APPROVED FOR SOIL EROSION & SEDIMENT CONTROL BY THE HOWARD SOIL CONSERVATION DISTRICT.

NICHOLS-FORWARD SOIL CONSERVATION DISTRICT

FORWARDED FOR THE HOWARD SOIL CONSERVATION DISTRICT & MEETS TECHNICAL REQUIREMENTS

THE LIMITED GRANTS SOIL CONSERVATION SERVICES

THESE PLANS HAVE BEEN REVIEWED FOR THE HOWARD SOIL CONSERVATION DISTRICT AND MEET THE TECHNICAL REQUIREMENTS FOR SMALL BUILD CONSTRUCTION, SOIL EROSION AND SEDIMENT CONTROL.

USE SOIL CONSERVATION DISTRICT

APPROVED FOR PUBLIC WATER AND PUBLIC SEWERAGE SYSTEM, HOWARD COUNTY HEALTH DEPARTMENT

[Signature] 7-2-86
 COUNTY HEALTH OFFICER

APPROVED: HOWARD COUNTY OFFICE OF PLANNING & ZONING

[Signature] 7-2-86
 DIRECTOR

APPROVED FOR PUBLIC WATER, PUBLIC SEWERAGE, STORM DRAINAGE SYSTEMS AND BONDS, HOWARD COUNTY DEPARTMENT OF PUBLIC WORKS

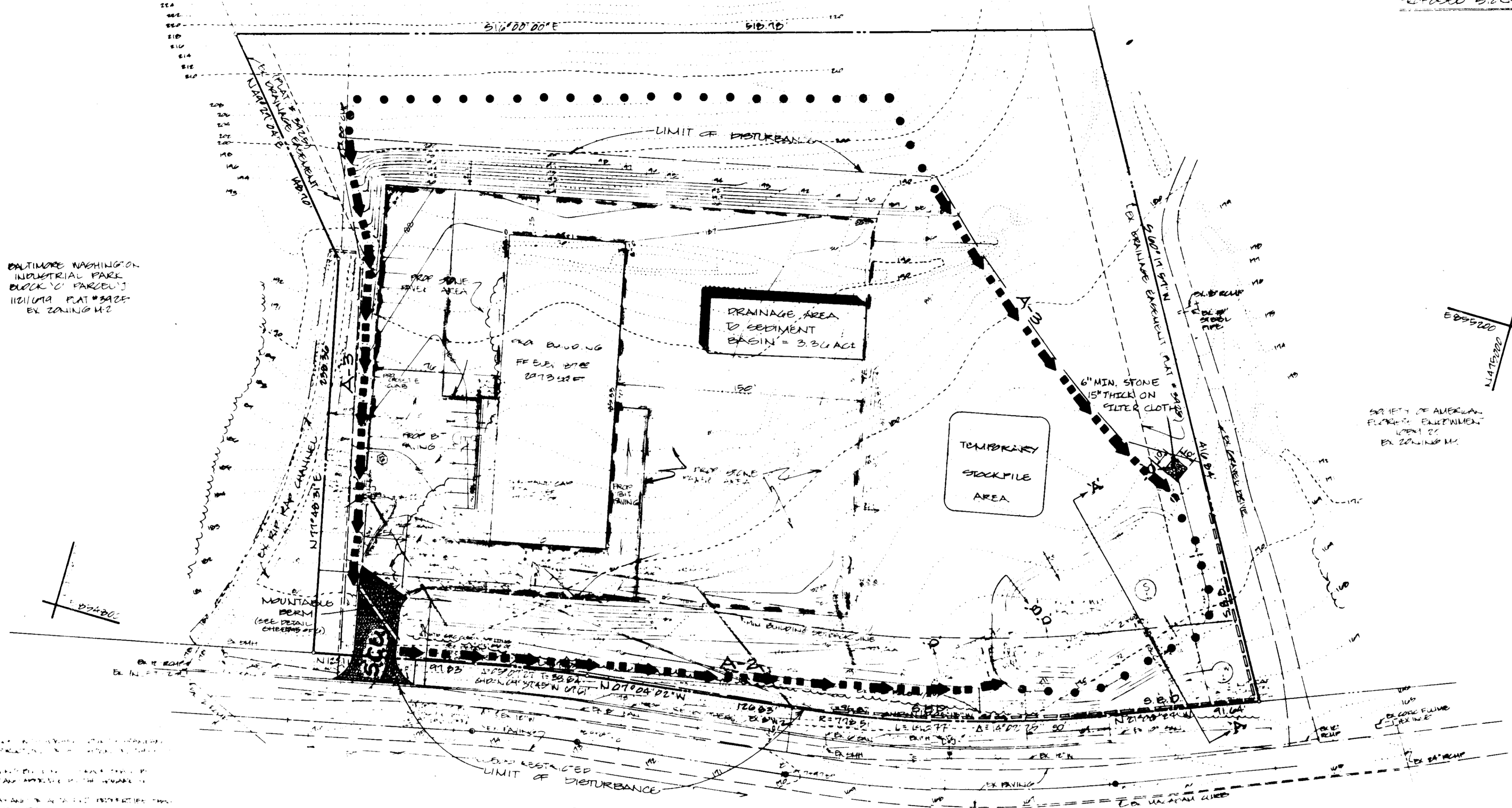
[Signature]
 DIRECTOR

SEQUENCE OF OPERATIONS

1. Notify the Howard County Department of Permits & Licenses Inspector, 48 hours before beginning work.
2. Install stabilized construction entrance.
3. Install the sediment basin using the approved storm water management plan except for changes to the release structure which are shown on the sediment and erosion control plan.
4. Install temporary dikes and remaining sediment control measures.
5. Begin grading maintaining positive drainage to the sediment basin.
6. Install the storm drain system. Storm drains to be backfilled and blocked (using construction) at the end of each day. All ditches, once they are in place, must be kept plugged as shown on the standard forms.
7. Install remaining utilities.
8. Finish grading.
9. Begin foundation walls.
10. Place masonry materials and pave areas to receive paving.
11. Stabilize remainder of the site not receiving building or paving.
12. Remove the silt protection.
13. After obtaining permission from the sediment control inspector, remove sediment control devices, stabilize the remaining disturbed area and return the release structure to the design shown on the approved storm water management plan.

1 Day
 1 Day
 3 Days
 2 Days
 3 Days
 4 Days
 3 Days
 2 Days
 1 Day
 2 Days

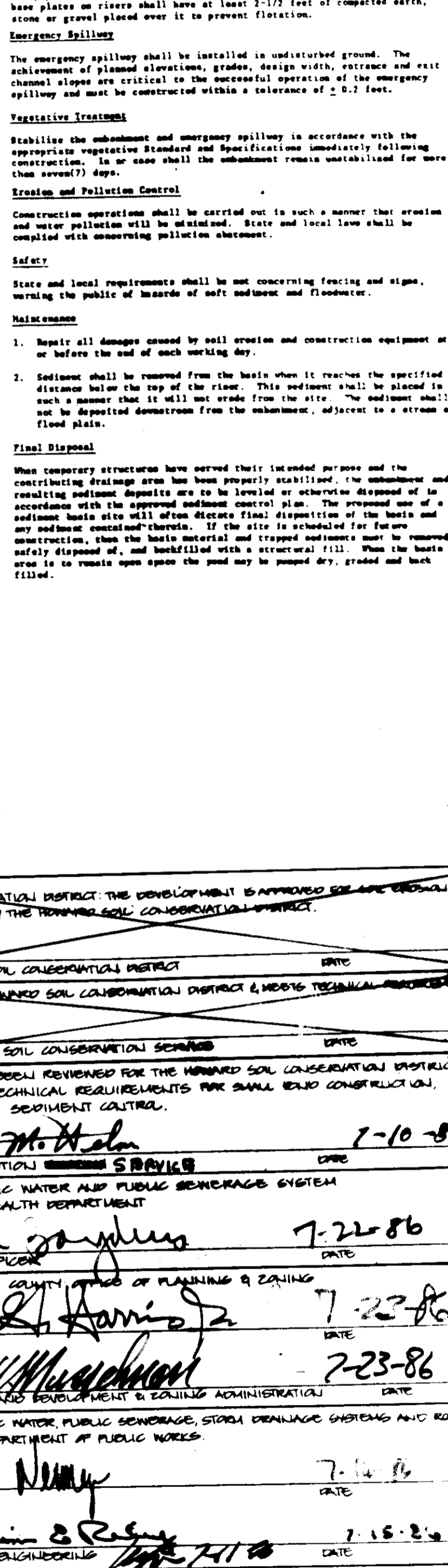
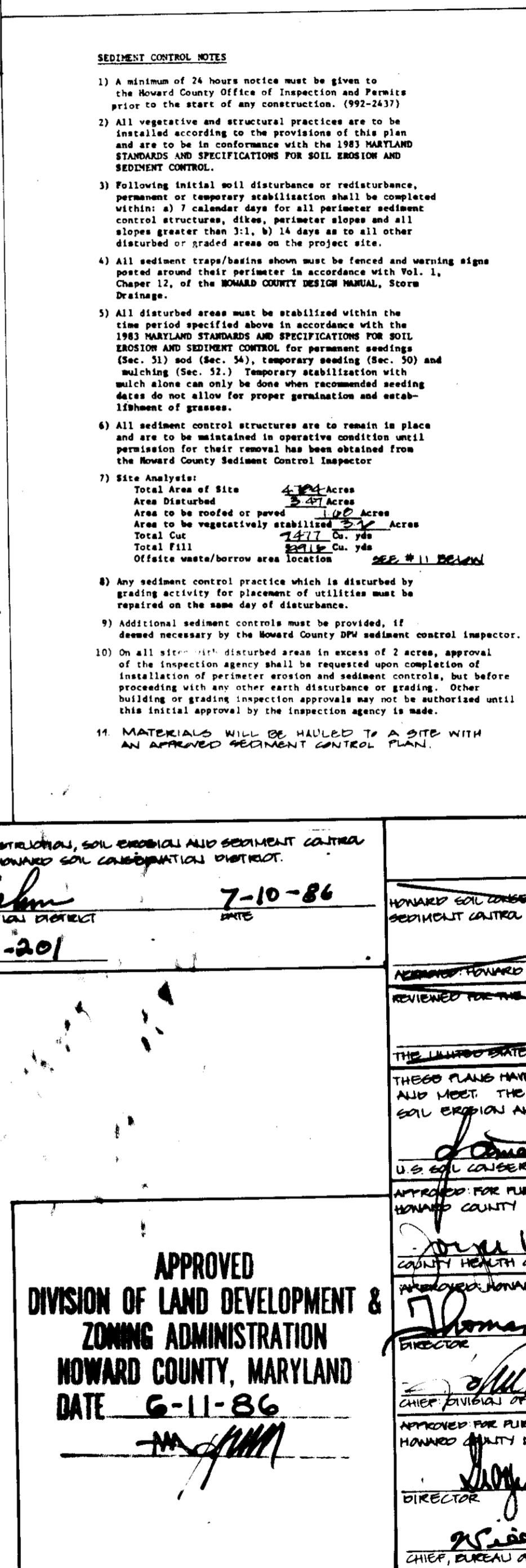
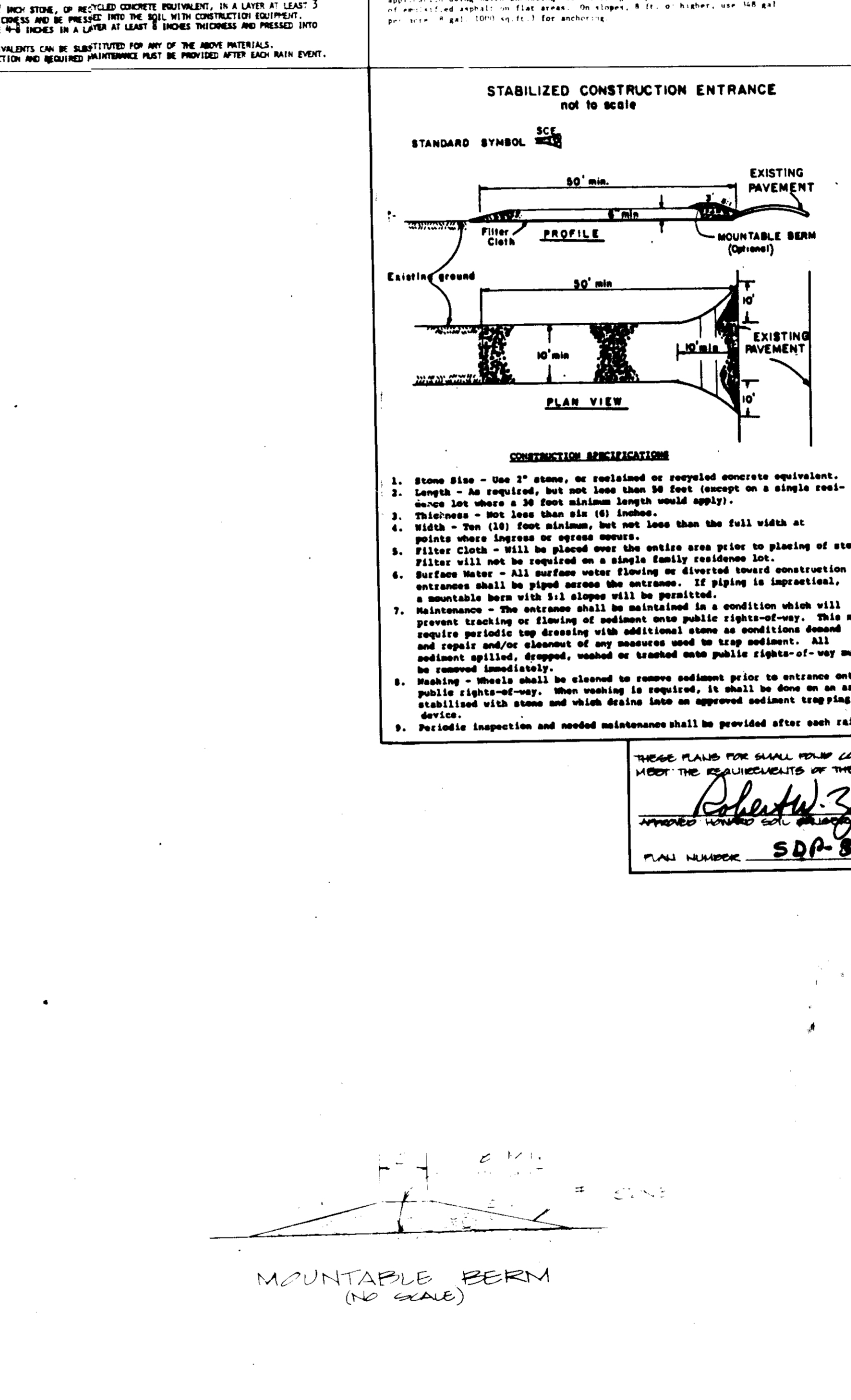
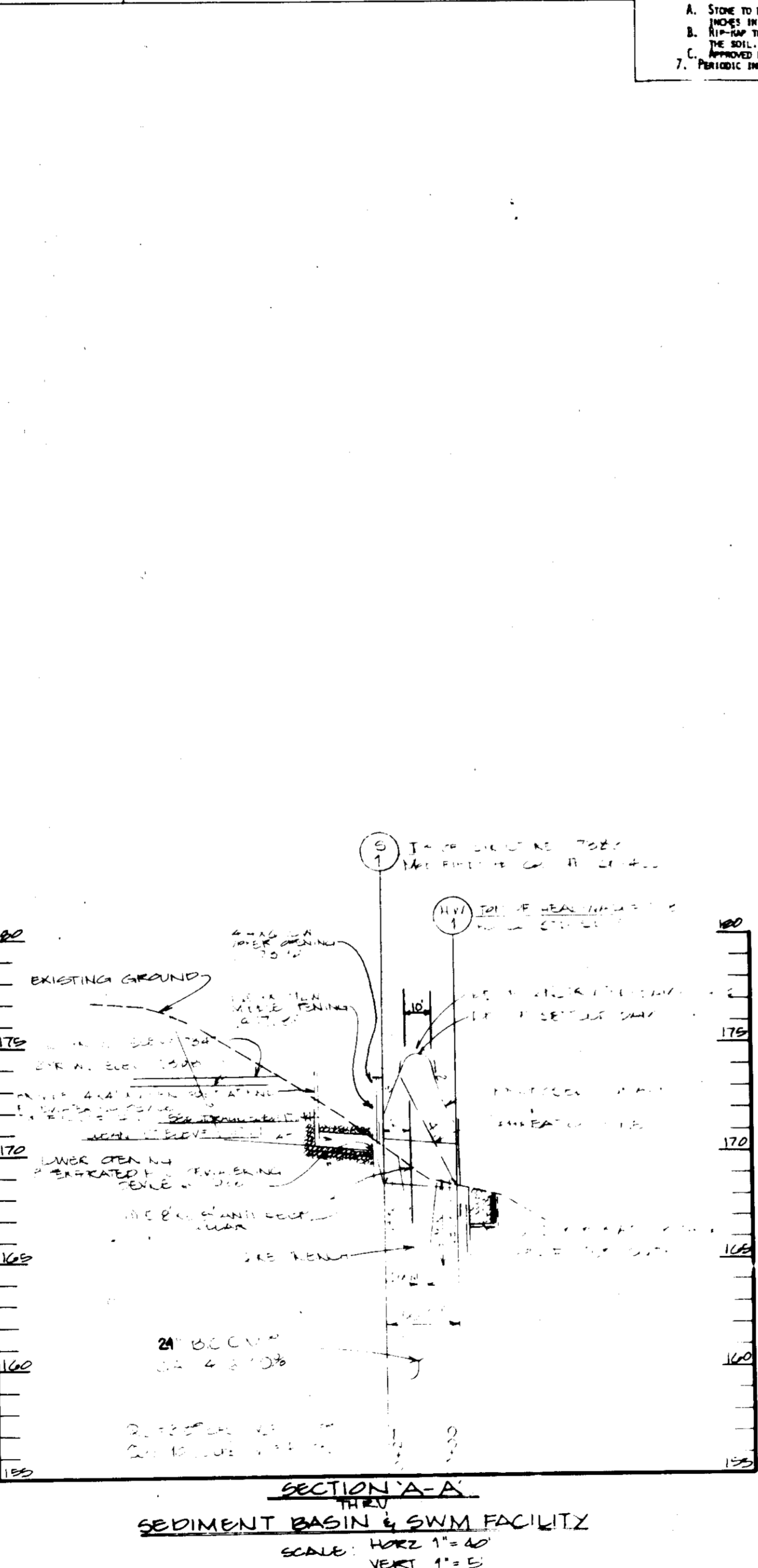
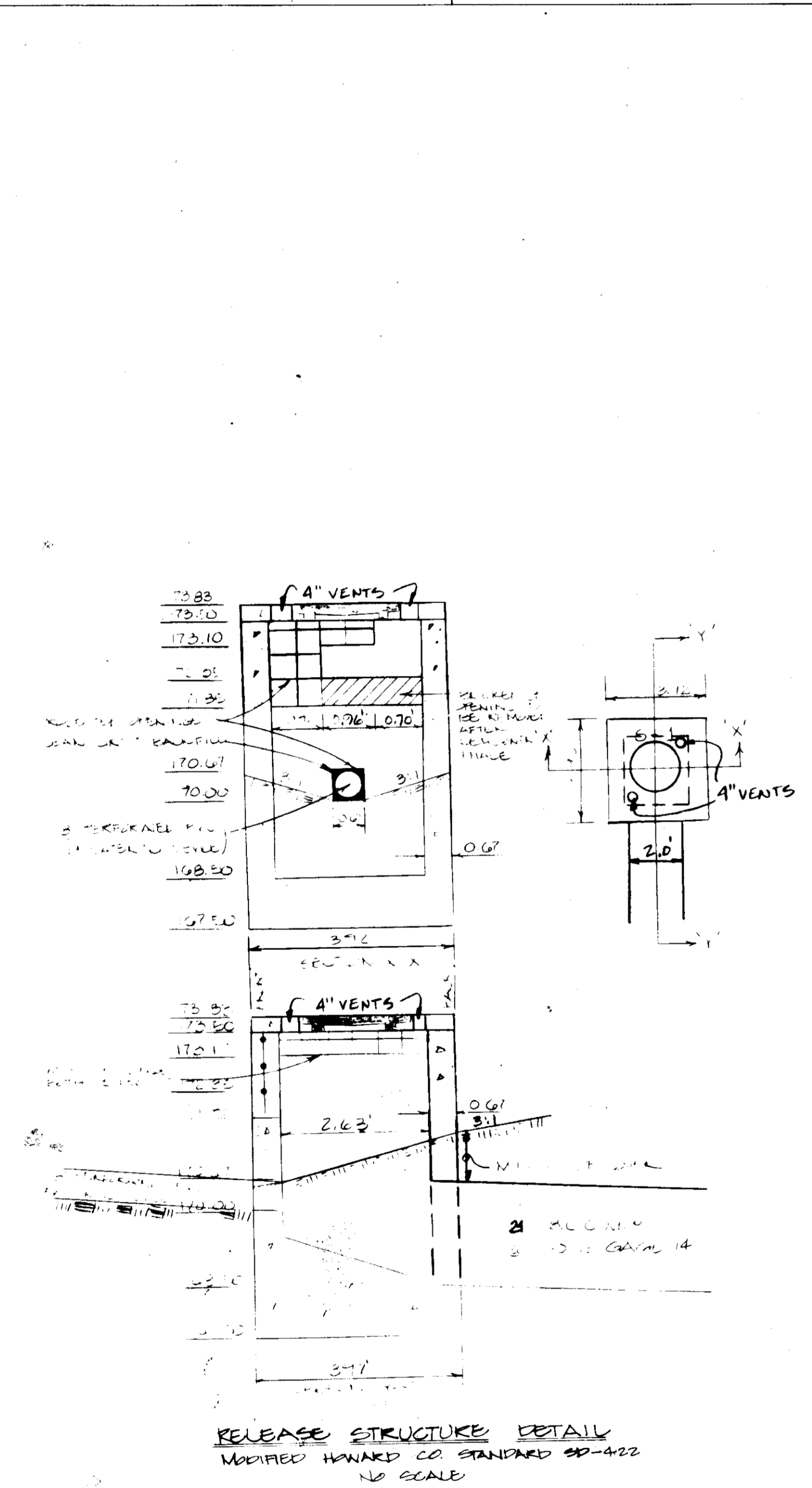
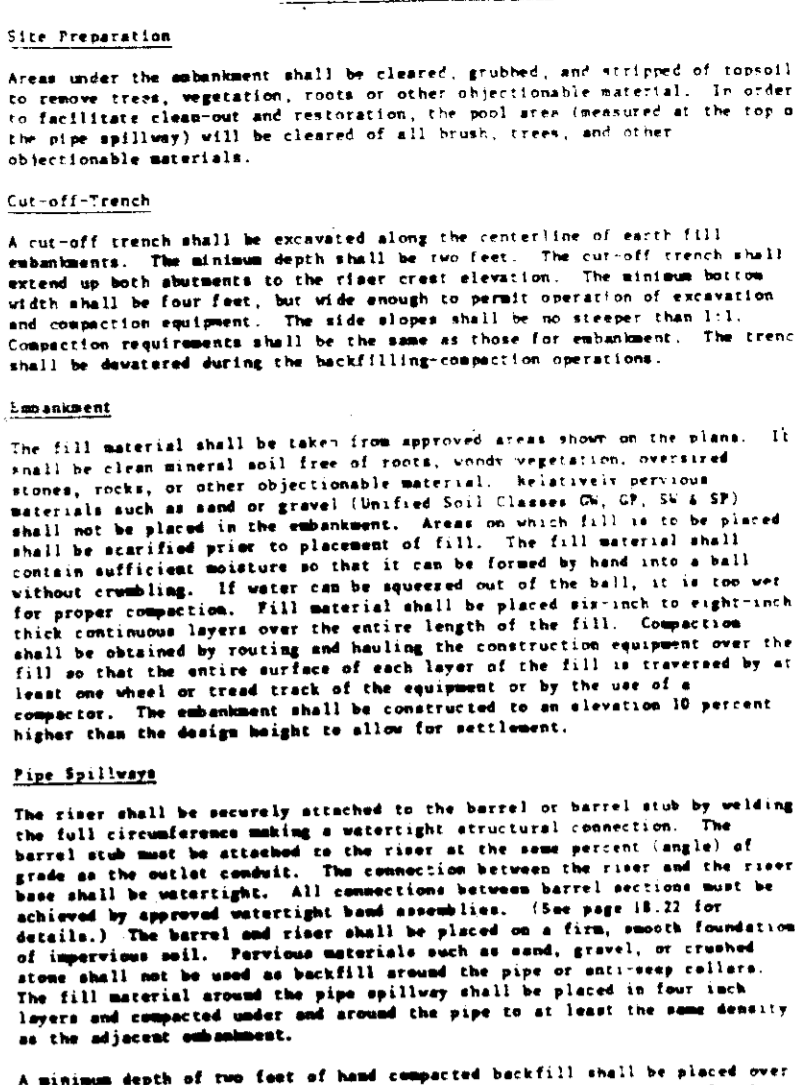
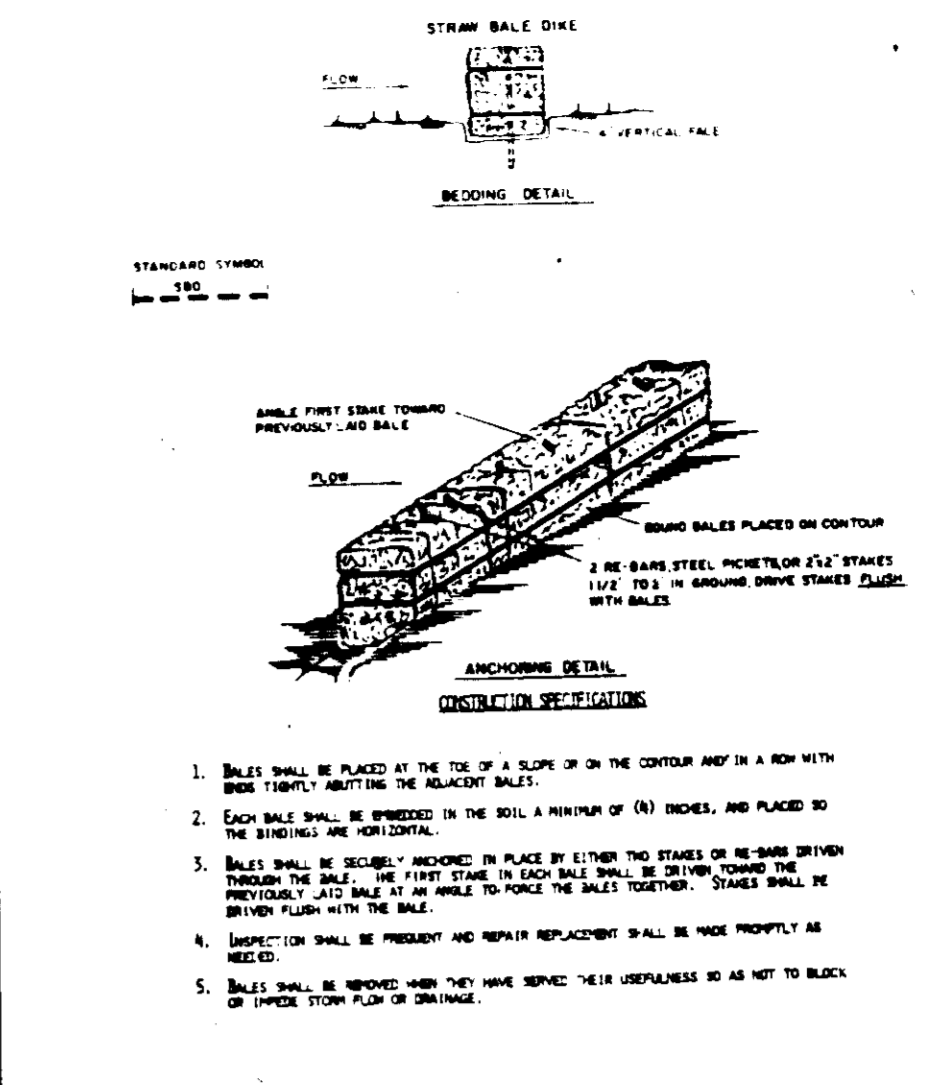
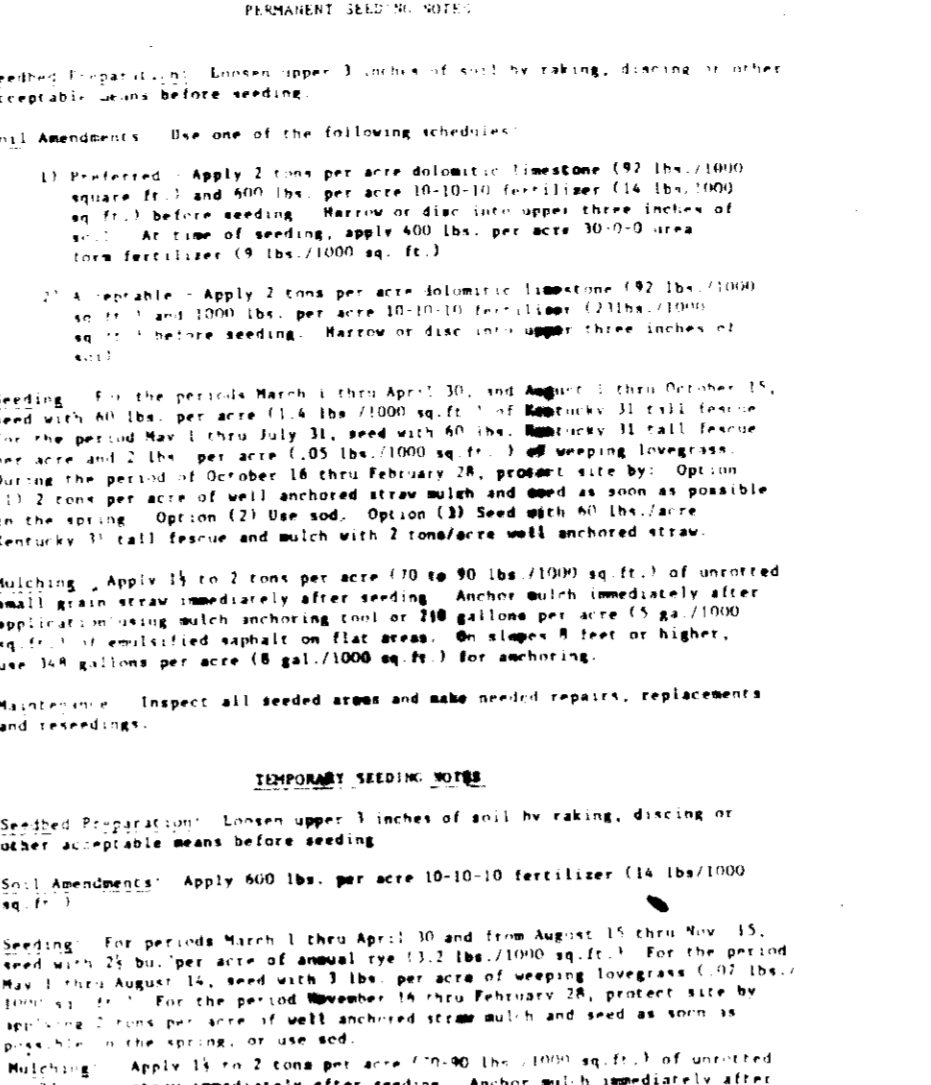
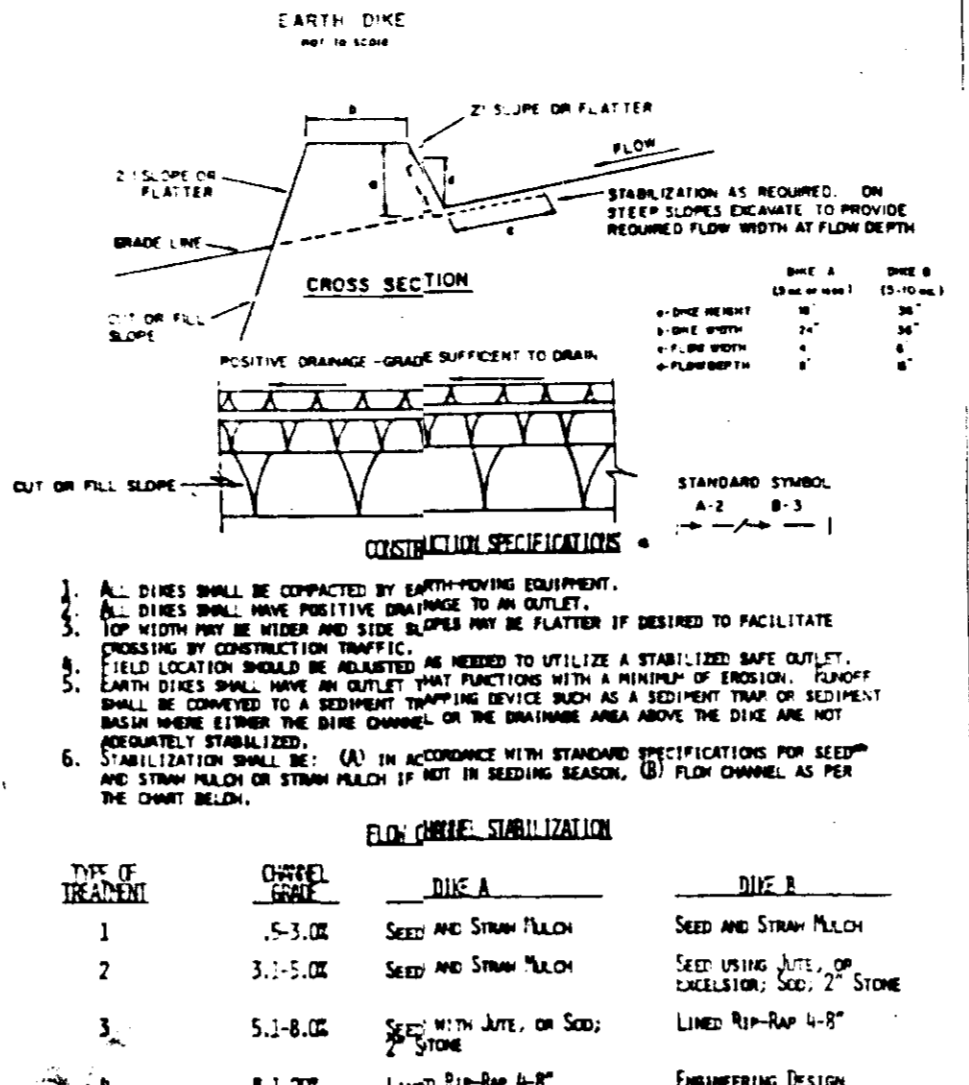
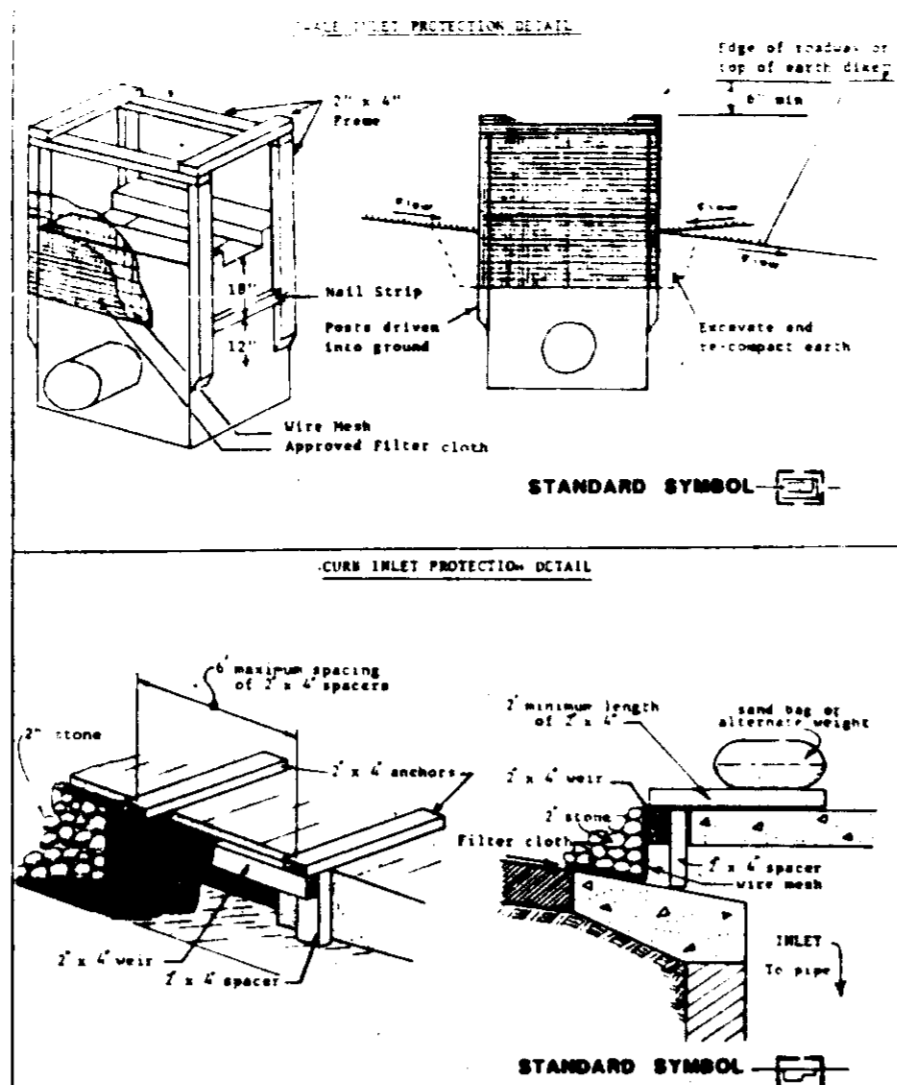
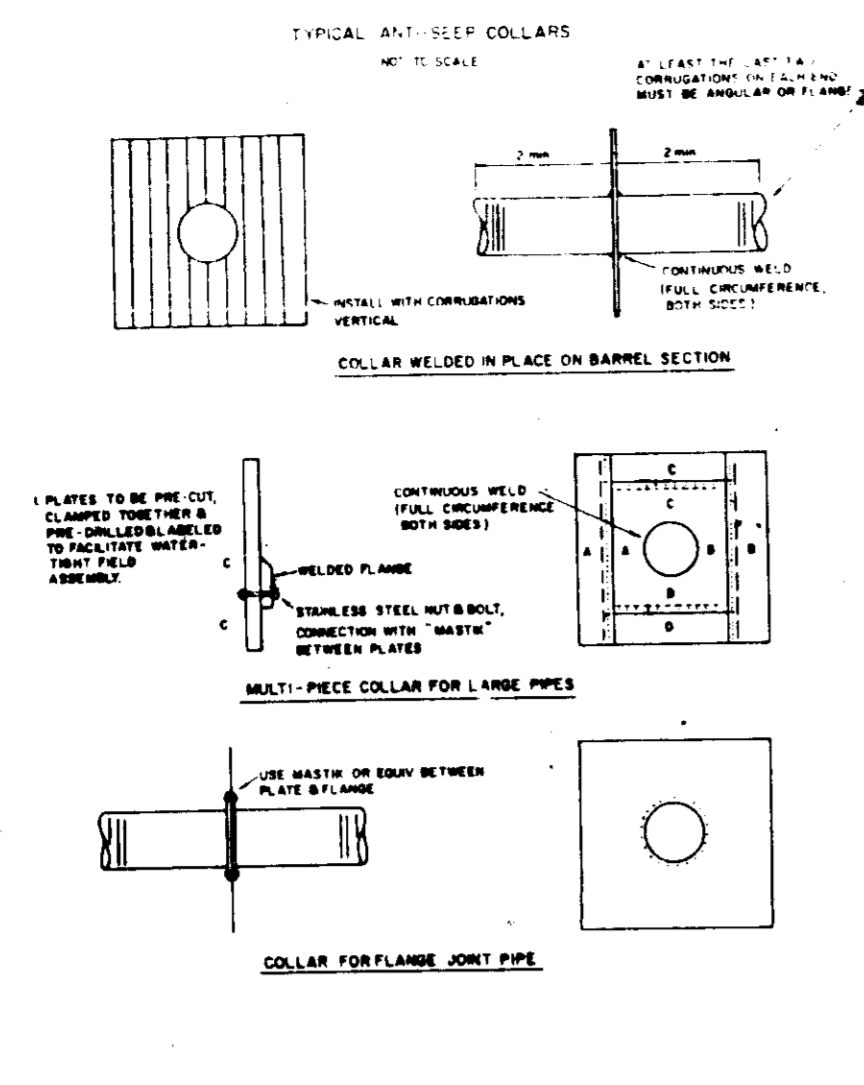
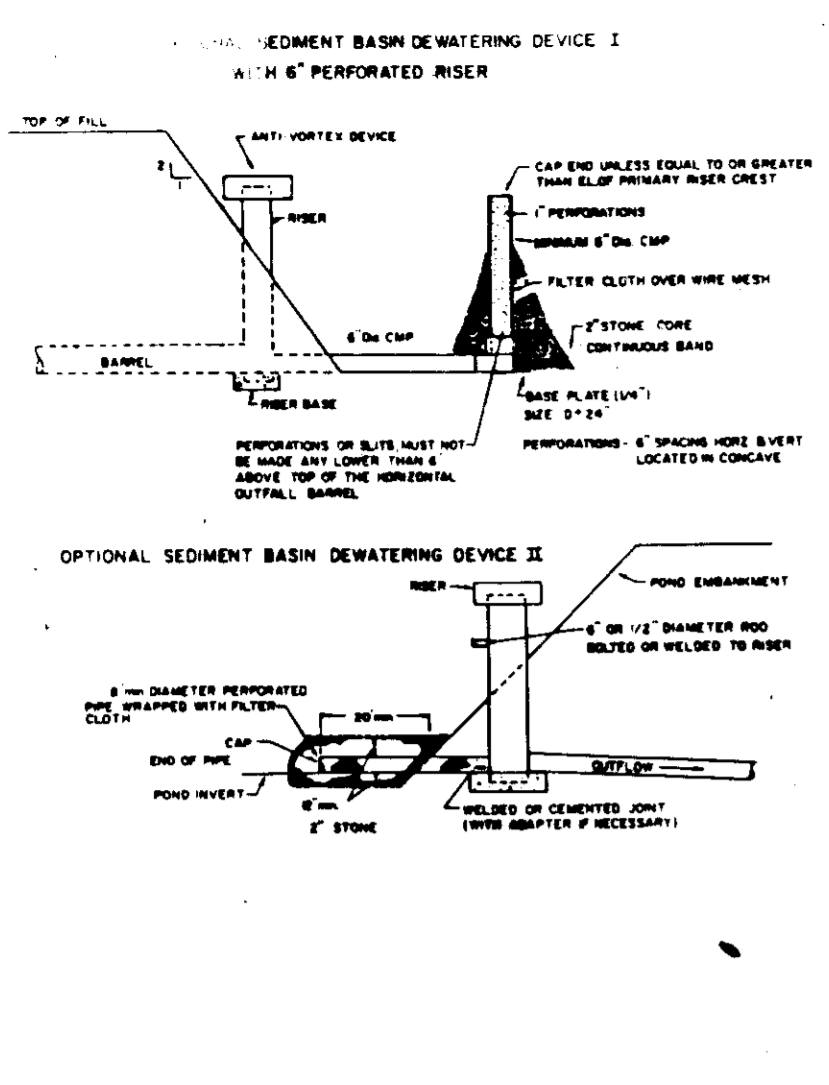
ORION OF LAND, LAND MARK TO ROBERT S. KAMINSKI, BALTIMORE WASHINGTON INDUSTRIAL PARK, BLOCK 'C', PARCEL 'K', LOT 101, 102, 103, 104, 105, 106, 107, 108, 109, 110, 111, 112, 113, 114, 115, 116, 117, 118, 119, 120, 121, 122, 123, 124, 125, 126, 127, 128, 129, 130, 131, 132, 133, 134, 135, 136, 137, 138, 139, 140, 141, 142, 143, 144, 145, 146, 147, 148, 149, 150, 151, 152, 153, 154, 155, 156, 157, 158, 159, 160, 161, 162, 163, 164, 165, 166, 167, 168, 169, 170, 171, 172, 173, 174, 175, 176, 177, 178, 179, 180, 181, 182, 183, 184, 185, 186, 187, 188, 189, 190, 191, 192, 193, 194, 195, 196, 197, 198, 199, 200, 201, 202, 203, 204, 205, 206, 207, 208, 209, 210, 211, 212, 213, 214, 215, 216, 217, 218, 219, 220, 221, 222, 223, 224, 225, 226, 227, 228, 229, 230, 231, 232, 233, 234, 235, 236, 237, 238, 239, 240, 241, 242, 243, 244, 245, 246, 247, 248, 249, 250, 251, 252, 253, 254, 255, 256, 257, 258, 259, 260, 261, 262, 263, 264, 265, 266, 267, 268, 269, 270, 271, 272, 273, 274, 275, 276, 277, 278, 279, 280, 281, 282, 283, 284, 285, 286, 287, 288, 289, 290, 291, 292, 293, 294, 295, 296, 297, 298, 299, 300, 301, 302, 303, 304, 305, 306, 307, 308, 309, 310, 311, 312, 313, 314, 315, 316, 317, 318, 319, 320, 321, 322, 323, 324, 325, 326, 327, 328, 329, 330, 331, 332, 333, 334, 335, 336, 337, 338, 339, 340, 341, 342, 343, 344, 345, 346, 347, 348, 349, 350, 351, 352, 353, 354, 355, 356, 357, 358, 359, 360, 361, 362, 363, 364, 365, 366, 367, 368, 369, 370, 371, 372, 373, 374, 375, 376, 377, 378, 379, 380, 381, 382, 383, 384, 385, 386, 387, 388, 389, 390, 391, 392, 393, 394, 395, 396, 397, 398, 399, 400, 401, 402, 403, 404, 405, 406, 407, 408, 409, 410, 411, 412, 413, 414, 415, 416, 417, 418, 419, 420, 421, 422, 423, 424, 425, 426, 427, 428, 429, 430, 431, 432, 433, 434, 435, 436, 437, 438, 439, 440, 441, 442, 443, 444, 445, 446, 447, 448, 449, 450, 451, 452, 453, 454, 455, 456, 457, 458, 459, 460, 461, 462, 463, 464, 465, 466, 467, 468, 469, 470, 471, 472, 473, 474, 475, 476, 477, 478, 479, 480, 481, 482, 483, 484, 485, 486, 487, 488, 489, 490, 491, 492, 493, 494, 495, 496, 497, 498, 499, 500, 501, 502, 503, 504, 505, 506, 507, 508, 509, 510, 511, 512, 513, 514, 515, 516, 517, 518, 519, 520, 521, 522, 523, 524, 525, 526, 527, 528, 529, 530, 531, 532, 533, 534, 535, 536, 537, 538, 539, 540, 541, 542, 543, 544, 545, 546, 547, 548, 549, 550, 551, 552, 553, 554, 555, 556, 557, 558, 559, 560, 561, 562, 563, 564, 565, 566, 567, 568, 569, 570, 571, 572, 573, 574, 575, 576, 577, 578, 579, 580, 581, 582, 583, 584, 585, 586, 587, 588, 589, 590, 591, 592, 593, 594, 595, 596, 597, 598, 599, 600, 601, 602, 603, 604, 605, 606, 607, 608, 609, 610, 611, 612, 613, 614, 615, 616, 617, 618, 619, 620, 621, 622, 623, 624, 625, 626, 627, 628, 629, 630, 631, 632, 633, 634, 635, 636, 637, 638, 639, 640, 641, 642, 643, 644, 645, 646, 647, 648, 649, 650, 651, 652, 653, 654, 655, 656, 657, 658, 659, 660, 661, 662, 663, 664, 665, 666, 667, 668, 669, 670, 671, 672, 673, 674, 675, 676, 677, 678, 679, 680, 681, 682, 683, 684, 685, 686, 687, 688, 689, 690, 691, 692, 693, 694, 695, 696, 697, 698, 699, 700, 701, 702, 703, 704, 705, 706, 707, 708, 709, 710, 711, 712, 713, 714, 715, 716, 717, 718, 719, 720, 721, 722, 723, 724, 725, 726, 727, 728, 729, 730, 731, 732, 733, 734, 735, 736, 737, 738, 739, 740, 741, 742, 743, 744, 745, 746, 747, 748, 749, 750, 751, 752, 753, 754, 755, 756, 757, 758, 759, 760, 761, 762, 763, 764, 765, 766, 767, 768, 769, 770, 771, 772, 773, 774, 775, 776, 777, 778, 779, 780, 781, 782, 783, 784, 785, 786, 787, 788, 789, 790, 791, 792, 793, 794, 795, 796, 797, 798, 799, 800, 801, 802, 803, 804, 805, 806, 807, 808, 809, 810, 811, 812, 813, 814, 815, 816, 817, 818, 819, 820, 821, 822, 823, 824, 825, 826, 827, 828, 829, 830, 831, 832, 833, 834, 835, 836, 837, 838, 839, 840, 841, 842, 843, 844, 845, 846, 847, 848, 849, 850, 851, 852, 853, 854, 855, 856, 857, 858, 859, 860, 861, 862, 863, 864, 865, 866, 867, 868, 869, 870, 871, 872, 873, 874, 875, 876, 877, 878, 879, 880, 881, 882, 883, 884, 885, 886, 887, 888, 889, 890, 891, 892, 893, 894, 895, 896, 897, 898, 899, 900, 901, 902, 903, 904, 905, 906, 907, 908, 909, 910, 911, 912, 913, 914, 915, 916, 917, 918, 919, 920, 921, 922, 923, 924, 925, 926, 927, 928, 929, 930, 931, 932, 933, 934, 935, 936, 937, 938, 939, 940, 941, 942, 943, 944, 945, 946, 947, 948, 949, 950, 951, 952, 953, 954, 955, 956, 957, 958, 959, 960, 961, 962, 963, 964, 965, 966, 967, 968, 969, 970, 971, 972, 973, 974, 975, 976, 977, 978, 979, 980, 981, 982, 983, 984, 985, 986, 987, 988, 989, 990, 991, 992, 993, 994, 995, 996, 997, 998, 999, 1000



BALTIMORE WASHINGTON INDUSTRIAL PARK, BLOCK 'C', PARCEL 'K', LOT 101, 102, 103, 104, 105, 106, 107, 108, 109, 110, 111, 112, 113, 114, 115, 116, 117, 118, 119, 120, 121, 122, 123, 124, 125, 126, 127, 128, 129, 130, 131, 132, 133, 134, 135, 136, 137, 138, 139, 140, 141, 142, 143, 144, 145, 146, 147, 148, 149, 150, 151, 152, 153, 154, 155, 156, 157, 158, 159, 160, 161, 162, 163, 164, 165, 166, 167, 168, 169, 170, 171, 172, 173, 174, 175, 176, 177, 178, 179, 180, 181, 182, 183, 184, 185, 186, 187, 188, 189, 190, 191, 192, 193, 194, 195, 196, 197, 198, 199, 200, 201, 202, 203, 204, 205, 206, 207, 208, 209, 210, 211, 212, 213, 214, 215, 216, 217, 218, 219, 220, 221, 222, 223, 224, 225, 226, 227, 228, 229, 230, 231, 232, 233, 234, 235, 236, 237, 238, 239, 240, 241, 242, 243, 244, 245, 246, 247, 248, 249, 250, 251, 252, 253, 254, 255, 256, 257, 258, 259, 260, 261, 262, 263, 264, 265, 266, 267, 268, 269, 270, 271, 272, 273, 274, 275, 276, 277, 278, 279, 280, 281, 282, 283, 284, 285, 286, 287, 288, 289, 290, 291, 292, 293, 294, 295, 296, 297, 298, 299, 300, 301, 302, 303, 304, 305, 306, 307, 308, 309, 310, 311, 312, 313, 314, 315, 316, 317, 318, 319, 320, 321, 322, 323, 324, 325, 326, 327, 328, 329, 330, 331, 332, 333, 334, 335, 336, 337, 338, 339, 340, 341, 342, 343, 344, 345, 346, 347, 348, 349, 350, 351, 352, 353, 354, 355, 356, 357, 358, 359, 360, 361, 362, 363, 364, 365, 366, 367, 368, 369, 370, 371, 372, 373, 374, 375, 376, 377, 378, 379, 380, 381, 382, 383, 384, 385, 386, 387, 388, 389, 390, 391, 392, 393, 394, 395, 396, 397, 398, 399, 400, 401, 402, 403, 404, 405, 406, 407, 408, 409, 410, 411, 412, 413, 414, 415, 416, 417, 418, 419, 420, 421, 422, 423, 424, 425, 426, 427, 428, 429, 430, 431, 432, 433, 434, 435, 436, 437, 438, 439, 440, 441, 442, 443, 444, 445, 446, 447, 448, 449, 450, 451, 452, 453, 454, 455, 456, 457, 458, 459, 460, 461, 462, 463, 464, 465, 466, 467, 468, 469, 470, 471, 472, 473, 474, 475, 476, 477, 478, 479, 480, 481, 482, 483, 484, 485, 486, 487, 488, 489, 490, 491, 492, 493, 494, 495, 496, 497, 498, 499, 500, 501, 502, 503, 504, 505, 506, 507, 508, 509, 510, 511, 512, 513, 514, 515, 516, 517, 518, 519, 520, 521, 522, 523, 524, 525, 526, 527, 528, 529, 530, 531, 532, 533, 534, 535, 536, 537, 538, 539, 540, 541, 542, 543, 544, 545, 546, 547, 548, 549, 550, 551, 552, 553, 554, 555, 556, 557, 558, 559, 560, 561, 562, 563, 564, 565, 566, 567, 568, 569, 570, 571, 572, 573, 574, 575, 576, 577, 578, 579, 580, 581, 582, 583, 584, 585, 586, 587, 588, 589, 590, 591, 592, 593, 594, 595, 596, 597, 598, 599, 600, 601, 602, 603, 604, 605, 606, 607, 608, 609, 610, 611, 612, 613, 614, 615, 616, 617, 618, 619, 620, 621, 622, 623, 624, 625, 626, 627, 628, 629, 630, 631, 632, 633, 634, 635, 636, 637, 638, 639, 640, 641, 642, 643, 644, 645, 646, 647, 648, 649, 650, 651, 652, 653, 654, 655, 656, 657, 658, 659, 660, 661, 662, 663, 664, 665, 666, 667, 668, 669, 670, 671, 672, 673, 674, 675, 676, 677, 678, 679, 680, 681, 682, 683, 684, 685, 686, 687, 688, 689, 690, 691, 692, 693, 694, 695, 696, 697, 698, 699, 700, 701, 702, 703, 704, 705, 706, 707, 708, 709, 710, 711, 712, 713, 714, 715, 716, 717, 718, 719, 720, 721, 722, 723, 724, 725, 726, 727, 728, 729, 730, 731, 732, 733, 734, 735, 736, 737, 738, 739, 740, 741, 742, 743, 744, 745, 746, 747, 748, 749, 750, 751, 752, 753, 754, 755, 756, 757, 758, 759, 760, 761, 762, 763, 764, 765, 766, 767, 768, 769, 770, 771, 772, 773, 774, 775, 776, 777, 778, 779, 780, 781, 782, 783, 784, 785, 786, 787, 788, 789, 790, 791, 792, 793, 794, 795, 796, 797, 798, 799, 800, 801, 802, 803, 804, 805, 806, 807, 808, 809, 810, 811, 812, 813, 814, 815, 816, 817, 818, 819, 820, 821, 822, 823, 824, 825, 826, 827, 828, 829, 830, 831, 832, 833, 834, 835, 836, 837, 838, 839, 840, 841, 842, 843, 844, 845, 846, 847, 848, 849, 850, 851, 852, 853, 854, 855, 856, 857, 858, 859, 860, 861, 862, 863, 864, 865, 866, 867, 868, 869, 870, 871, 872, 873, 874, 875, 876, 877, 878, 879, 880, 881, 882, 883, 884, 885, 886, 887, 888, 889, 890, 891, 892, 893, 894, 895, 896, 897, 898, 899, 900, 901, 902, 903, 904, 905, 906, 907, 908, 909, 910, 911, 912, 913, 914, 915, 916, 917, 918, 919, 920, 921, 922, 923, 924, 925, 926, 927, 928, 929, 930, 931, 932, 933, 934, 935, 936, 937, 938, 939, 940, 941, 942, 943, 944, 945, 946, 947, 948, 949, 950, 951, 952, 953, 954, 955, 956, 957, 958, 959, 960, 961, 962, 963, 964, 965, 966, 967, 968, 969, 970, 971, 972, 973, 974, 975, 976, 977, 978, 979, 980, 981, 982, 983, 984, 985, 986, 987, 988, 989, 990, 991, 992, 993, 994, 995, 996, 997, 998, 999, 1000

GENERAL NOTES

1. THE CONTRACTOR SHALL MAINTAIN POSITIVE DRAINAGE TO THE SEDIMENT BASIN AT ALL TIMES.
2. THE CONTRACTOR SHALL MAINTAIN POSITIVE DRAINAGE TO THE SEDIMENT BASIN AT ALL TIMES.
3. THE CONTRACTOR SHALL MAINTAIN POSITIVE DRAINAGE TO THE SEDIMENT BASIN AT ALL TIMES.
4. THE CONTRACTOR SHALL MAINTAIN POSITIVE DRAINAGE TO THE SEDIMENT BASIN AT ALL TIMES.
5. THE CONTRACTOR SHALL MAINTAIN POSITIVE DRAINAGE TO THE SEDIMENT BASIN AT ALL TIMES.
6. THE CONTRACTOR SHALL MAINTAIN POSITIVE DRAINAGE TO THE SEDIMENT BASIN AT ALL TIMES.
7. THE CONTRACTOR SHALL MAINTAIN POSITIVE DRAINAGE TO THE SEDIMENT BASIN AT ALL TIMES.
8. THE CONTRACTOR SHALL MAINTAIN POSITIVE DRAINAGE TO THE SEDIMENT BASIN AT ALL TIMES.
9. THE CONTRACTOR SHALL MAINTAIN POSITIVE DRAINAGE TO THE SEDIMENT BASIN AT ALL TIMES.
10. THE CONTRACTOR SHALL MAINTAIN POSITIVE DRAINAGE TO THE SEDIMENT BASIN AT ALL TIMES.
11. THE CONTRACTOR SHALL MAINTAIN POSITIVE DRAINAGE TO THE SEDIMENT BASIN AT ALL TIMES.
12. THE CONTRACTOR SHALL MAINTAIN POSITIVE DRAINAGE TO THE SEDIMENT BASIN AT ALL TIMES.
13. THE CONTRACTOR SHALL MAINTAIN POSITIVE DRAINAGE TO THE SEDIMENT BASIN AT ALL TIMES.
14. THE CONTRACTOR SHALL MAINTAIN POSITIVE DRAINAGE TO THE SEDIMENT BASIN AT ALL TIMES.
15. THE CONTRACTOR SHALL MAINTAIN POSITIVE DRAINAGE TO THE SEDIMENT BASIN AT ALL TIMES.
16. THE CONTRACTOR SHALL MAINTAIN POSITIVE DRAINAGE TO THE SEDIMENT BASIN AT ALL TIMES.
17. THE CONTRACTOR SHALL MAINTAIN POSITIVE DRAINAGE TO THE SEDIMENT BASIN AT ALL TIMES.
18. THE CONTRACTOR SHALL MAINTAIN POSITIVE DRAINAGE TO THE SEDIMENT BASIN AT ALL TIMES.
19. THE CONTRACTOR SHALL MAINTAIN POSITIVE DRAINAGE TO THE SEDIMENT BASIN AT ALL TIMES.
20. THE CONTRACTOR SHALL MAINTAIN POSITIVE DRAINAGE TO THE SEDIMENT BASIN AT ALL TIMES.
21. THE CONTRACTOR SHALL MAINTAIN POSITIVE DRAINAGE TO THE SEDIMENT BASIN AT ALL TIMES.
22. THE CONTRACTOR SHALL MAINTAIN POSITIVE DRAINAGE TO THE SEDIMENT BASIN AT ALL TIMES.
23. THE CONTRACTOR SHALL MAINTAIN POSITIVE DRAINAGE TO THE SEDIMENT BASIN AT ALL TIMES.
24. THE CONTRACTOR SHALL MAINTAIN POSITIVE DRAINAGE TO THE SEDIMENT BASIN AT ALL TIMES.
25. THE CONTRACTOR SHALL MAINTAIN POSITIVE DRAINAGE TO THE SEDIMENT BASIN AT ALL TIMES.
26. THE CONTRACTOR SHALL MAINTAIN POSITIVE DRAINAGE TO THE SEDIMENT BASIN AT ALL TIMES.
27. THE CONTRACTOR SHALL MAINTAIN POSITIVE DRAINAGE TO THE SEDIMENT BASIN AT ALL TIMES.
28. THE CONTRACTOR SHALL MAINTAIN POSITIVE DRAINAGE TO THE SEDIMENT BASIN AT ALL TIMES.
29. THE CONTRACTOR SHALL MAINTAIN POSITIVE DRAINAGE TO THE SEDIMENT BASIN AT ALL TIMES.
30. THE CONTRACTOR SHALL MAINTAIN POSITIVE DRAINAGE TO THE SEDIMENT BASIN AT ALL TIMES.
31. THE CONTRACTOR SHALL MAINTAIN POSITIVE DRAINAGE TO THE SEDIMENT BASIN AT ALL TIMES.
32. THE CONTRACTOR SHALL MAINTAIN POSITIVE DRAINAGE TO THE SEDIMENT BASIN AT ALL TIMES.
33. THE CONTRACTOR SHALL MAINTAIN POSITIVE DRAINAGE TO THE SEDIMENT BASIN AT ALL TIMES.
34. THE CONTRACTOR SHALL MAINTAIN POSITIVE DRAINAGE TO THE SEDIMENT BASIN AT ALL TIMES.
35. THE CONTRACTOR SHALL MAINTAIN POSITIVE DRAINAGE TO THE SEDIMENT BASIN AT ALL TIMES.
36. THE CONTRACTOR SHALL MAINTAIN POSITIVE DRAINAGE TO THE SEDIMENT BASIN AT ALL TIMES.
37. THE CONTRACTOR SHALL MAINTAIN POSITIVE DRAINAGE TO THE SEDIMENT BASIN AT ALL TIMES.
38. THE CONTRACTOR SHALL MAINTAIN POSITIVE DRAINAGE TO THE SEDIMENT BASIN AT ALL TIMES.
39. THE CONTRACTOR SHALL MAINTAIN POSITIVE DRAINAGE TO THE SEDIMENT BASIN AT ALL TIMES.
40. THE CONTRACTOR SHALL MAINTAIN POSITIVE DRAINAGE TO THE SEDIMENT BASIN AT ALL TIMES.
41. THE CONTRACTOR SHALL MAINTAIN POSITIVE DRAINAGE TO THE SEDIMENT BASIN AT ALL TIMES.
42. THE CONTRACTOR SHALL MAINTAIN POSITIVE DRAINAGE TO THE SEDIMENT BASIN AT ALL TIMES.
43. THE CONTRACTOR SHALL MAINTAIN POSITIVE DRAINAGE TO THE SEDIMENT BASIN AT ALL TIMES.
44. THE CONTRACTOR SHALL MAINTAIN POSITIVE DRAINAGE TO THE SEDIMENT BASIN AT ALL TIMES.
45. THE CONTRACTOR SHALL MAINTAIN POSITIVE DRAINAGE TO THE SEDIMENT BASIN AT ALL TIMES.
46. THE CONTRACTOR SHALL MAINTAIN POSITIVE DRAINAGE TO THE SEDIMENT BASIN AT ALL TIMES.
47. THE CONTRACTOR SHALL MAINTAIN POSITIVE DRAINAGE TO THE SEDIMENT BASIN AT ALL TIMES.
48. THE CONTRACTOR SHALL MAINTAIN POSITIVE DRAINAGE TO THE SEDIMENT BASIN AT ALL TIMES.
49. THE CONTRACTOR SHALL MAINTAIN POSITIVE DRAINAGE TO THE SEDIMENT BASIN AT ALL TIMES.
50. THE CONTRACTOR SHALL MAINTAIN POSITIVE DRAINAGE TO THE SEDIMENT BASIN AT ALL TIMES.
51. THE CONTRACTOR SHALL MAINTAIN POSITIVE DRAINAGE TO THE SEDIMENT BASIN AT ALL TIMES.
52. THE CONTRACTOR SHALL MAINTAIN POSITIVE DRAINAGE TO THE SEDIMENT BASIN AT ALL TIMES.
53. THE CONTRACTOR SHALL MAINTAIN POSITIVE DRAINAGE TO THE SEDIMENT BASIN AT ALL TIMES.
54. THE CONTRACTOR SHALL MAINTAIN POSITIVE DRAINAGE TO THE SEDIMENT BASIN AT ALL TIMES.
55. THE CONTRACTOR SHALL MAINTAIN POSITIVE DRAINAGE TO THE SEDIMENT BASIN AT ALL TIMES.
56. THE CONTRACTOR SHALL MAINTAIN POSITIVE DRAINAGE TO THE SEDIMENT BASIN AT ALL TIMES.
57. THE CONTRACTOR SHALL MAINTAIN POSITIVE DRAINAGE TO THE SEDIMENT BASIN AT

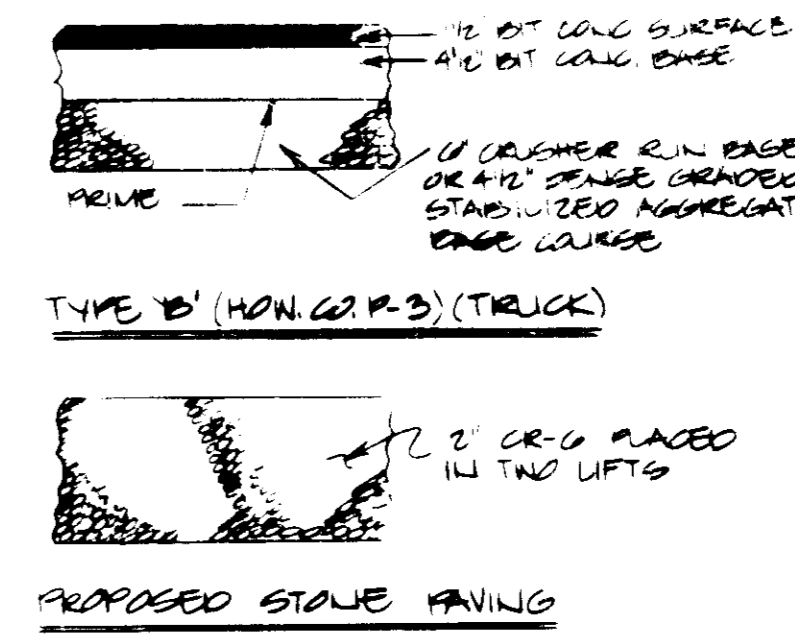
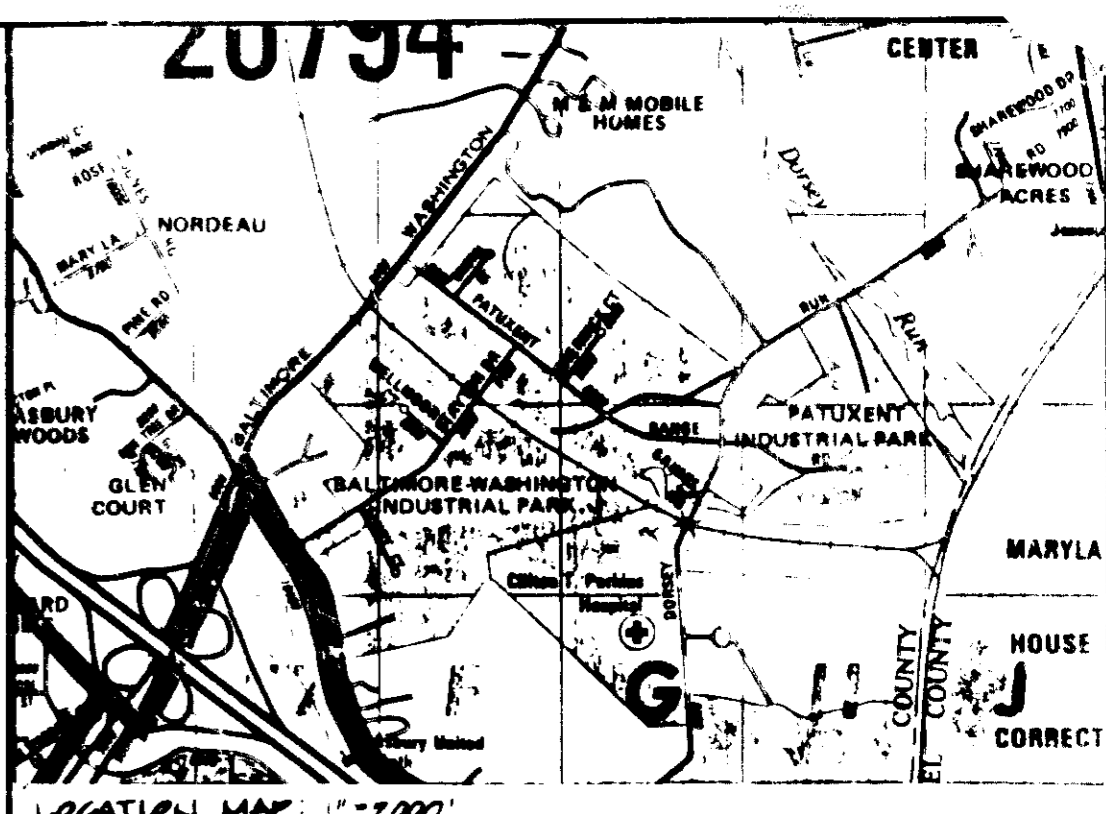


GEORGE WILLIAM STEPHENS, JR. AND ASSOCIATES, INC.
CIVIL ENGINEERS & LAND SURVEYORS
303 ALLEGHENY AVENUE
TOWSON, MARYLAND 21284

OWNER
ELLIOTT & FRANTZ, INC.
1400 CHERRY HILL ROAD
BALTIMORE, MD 21205
(301) 354-1800

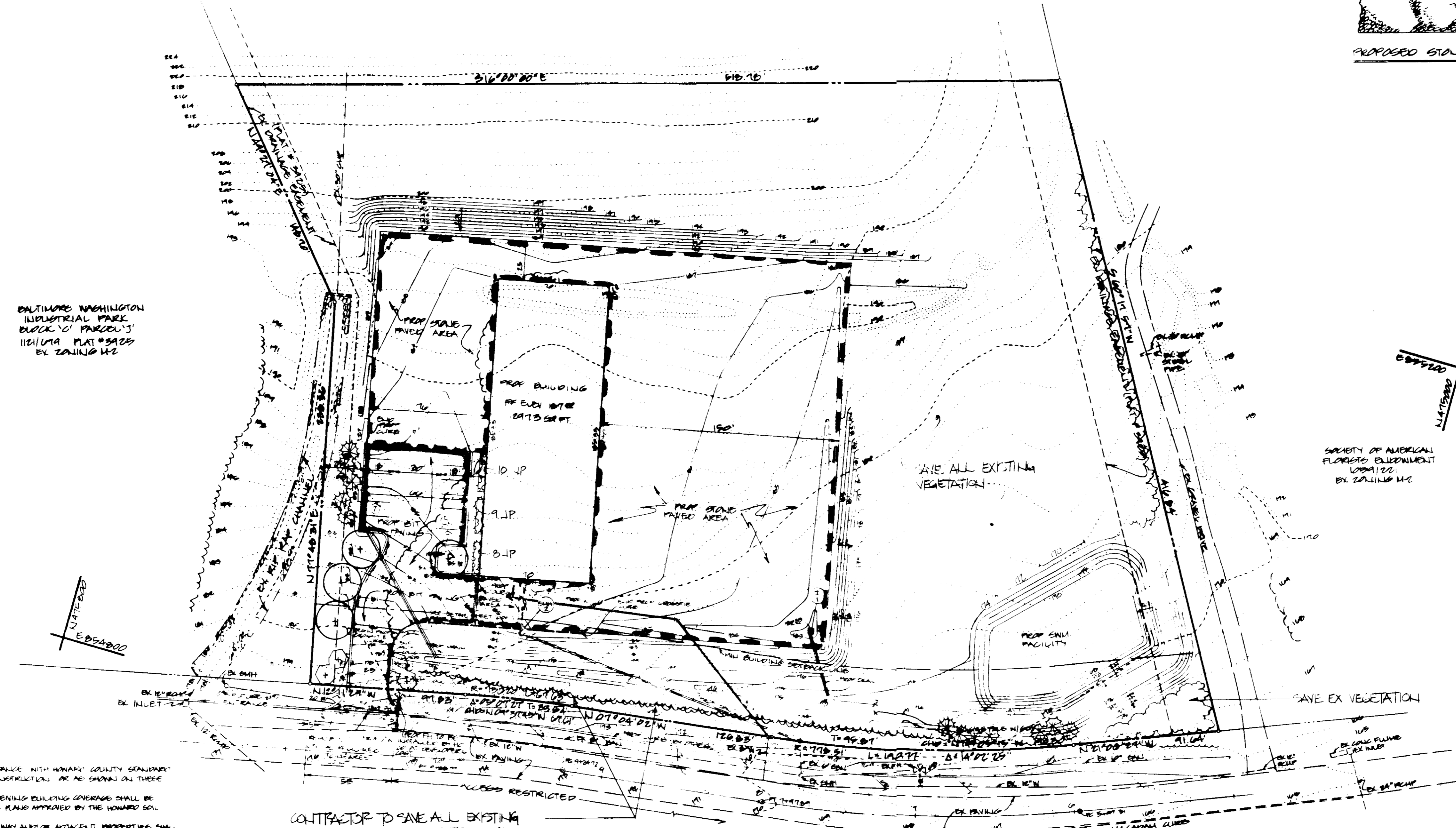
DESIGNED/DRAWN/CHECKED
REVISOR

PROFESSIONAL ENGINEER
ELLIOTT FRANTZ
REGISTERED PROFESSIONAL ENGINEER
Baltimore Washington Industrial Park
JANUARY 20, 1986
SHEET 5 OF 2



CRON OF LANDLORD PAUSE TO REMOVE & REGRADING BALTIMORE WASHINGTON INDUSTRIAL PARK BLOCK 'G' PARCELS 1001/101A PLAT # 9425 BY ZONING M-2

BALTIMORE WASHINGTON INDUSTRIAL PARK BLOCK 'G' PARCELS 1001/101A PLAT # 9425 BY ZONING M-2



SITE DATA
 AREA OF SITE 4.104 ACRES
 TOTAL FLOOR AREA 14,119 SQ FT
 EXISTING USE VACANT
 PROPOSED USE SALES, RENTAL & SERVICE OF CONSTRUCTION EQUIPMENT
 FLOOR AREA RATIO 0.20%
 PROPERTY REFERENCE BALTIMORE WASHINGTON INDUSTRIAL PARK BLOCK 'G' PARCELS 1001/101A
 TO OPEN SPACE
 % BUILDING COVERAGE IN PAVING
 AREA TO BE DISTURBED
 AREA TO BE VEGETATIVELY STABILIZED
 EXISTING ZONING M-2
 PARKING REQUIRED:
 12 OFFICE EMPLOYEES @ 1.5 HOURS = 18 PS
 12 SHOP EMPLOYEES @ 1.5 HOURS = 18 PS
 TOTAL = 36 PS (INCLUDING 1 H.C.)
 PARKING PROVIDED 14 PS (INCLUDING 1 H.C.)
 TRIP PS = 14 H.C. PS = 15 X 10'

LEGEND
 EX. BOUNDARY M-2
 PROPOSED BOUNDARY M-2
 TRACT OUTLINE
 K/M LINE
 MINIMUM BUILDING FOOTPRINT LINE
 CASEMENTS
 NUMBER PARKING SPACES (1)
 HANDICAPPED PARKING SPACE (2)
 TYPE 'B' PAVING (TRUCK) [Symbol]
 STONE PAVING [Symbol]

GENERAL NOTES
 1. ALL WORK SHALL BE DONE IN ACCORDANCE WITH HOWARD COUNTY STANDARDS AND REGULATIONS AND DETAILS FOR CONSTRUCTION AS SHOWN ON THESE PLANS.
 2. ALL AREAS NOT BUILT UPON OR RESERVING BUILDING COVERAGE SHALL BE STABILIZED IN ACCORDANCE WITH THE PLANS APPROVED BY THE HOWARD SOIL CONSERVATION DISTRICT.
 3. ALL DAMAGE TO PUBLIC RIGHTS OF WAY AND/OR ADJACENT PROPERTIES SHALL BE REPAIRED IMMEDIATELY AT THE CONTRACTOR'S EXPENSE.
 4. THE CONTRACTOR SHALL MAINTAIN AT LEAST A 2' CLEARANCE BEHIND ALL CURBS AND GUTTERS AND THE EDGE OF ALL DRIVE PAVED AREAS.
 5. THE CONTRACTOR SHALL VERIFY ALL EXISTING UTILITIES TO HIS OWN SATISFACTION BEFORE BEGINNING CONSTRUCTION.
 6. ALL UTILITIES SHALL BE 2' OR DEEPER.
 7. THE CONTRACTOR SHALL NOTIFY THE CITY TELEPHONE CO AND THE GAS AND ELECTRIC COMPANY FIVE DAYS PRIOR TO STARTING WORK SHOWN ON THESE PLANS BY CALLING "MISS UTILITY CALL COLLECT 1-509-0100".
 8. FOR DETAILS OF RAINFALL AND GUTTERS FOR THE HANDICAPPED SEE THE VERTICAL CURB AND GUTTER FOR THE HANDICAPPED AND ACCESS GRADING MANUAL.
 9. THE CONTRACTOR SHALL MAINTAIN A MINIMUM OF 4' COVER OVER ALL EXISTING WATER LINES.
 10. THE CONTRACTOR OR DEVELOPER SHALL CONTACT THE CONSTRUCTION INSPECTION DIVISION 24 HOURS IN ADVANCE OF COMMENCEMENT OF WORK AT 410-2341 OR 442-1212.
 11. THE CONTRACTOR SHALL REMOVE ALL EXISTING PAVING CURB AND GUTTER, ETC. THAT MAY INTERFERE WITH PROPOSED CONSTRUCTION.
 12. ALL UTILITY LINES INSTALLED UNDER PAVING SHALL RECEIVE FULL TRENCH COVER.
 13. ALL WATER MAIN TRENDS, CANS, ETC. SHALL BE BUTTERESSED IN ACCORDANCE WITH HOWARD COUNTY DESIGN REQUIREMENTS.

CONTRACTOR TO SAVE ALL EXISTING VEGETATION OUTSIDE OF PROPOSED GRADING - HE WILL BE HELD LIABLE FOR UNNECESSARY DAMAGE TO SAID VEGETATION

PLANT LIST 3-6-86

FOZIER ASSOCIATES LAND ARCHITECTS
 SUITE 400 MILL CENTER
 3050 CHESTNUT AVE
 BALTIMORE, MD 21211

SYM NO.	BOTANICAL	COMMON	REMARKS / COMMENTS
④ 4	ACEF PUBERUM O.S.	"COTONWOOD" RED MAPLE	2-2 1/2" CAL, 12-14' HT, B&B FULL
④ 4	PRUNUS YUENGENSIS	YOSHINO CHERRY	6-8' HT, ↓ PEN'CE
④ 12	PINUS STROBUS	WHITE PINE	18-24" HT.
LP 21	JUN. PFITZER COMPACTA	COMPACT PFITZER JUN	

NOTES
 1. All plants to meet A.A.N. Standards.
 2. Landscape Contractor to follow 'Landscape Specification Guidelines for Baltimore-Washington Metro Area' approved by LCAW.
 3. No substitutions to be made without consent of Landscape Architect.
 4. All beds to be topped with 3" shredded hardwood mulch.
 5. Landscape contractor to verify location of utilities with owner before planting.

OWNER
 ELLIOTT & FRANTZ, INC.
 1400 CHERRY HILL ROAD
 BALTIMORE, MD 21225
 (301) 354-1800

ENGINEER'S CERTIFICATE
 I CERTIFY THAT THIS PLAN FOR SOIL FACILITY CONSTRUCTION EROSION AND SEDIMENT CONTROL REPRESENTS A PRACTICAL AND WORKABLE PLAN BASED ON MY PERSONAL KNOWLEDGE OF THE SITE AND THAT THIS PLAN WAS PREPARED IN ACCORDANCE WITH THE REQUIREMENTS OF THE SITE CONDITIONS. THIS PLAN WAS PREPARED IN ACCORDANCE WITH THE REQUIREMENTS OF THE HOWARD SOIL CONSERVATION DISTRICT. I HAVE NOTIFIED THE DEVELOPER THAT HE MUST PROVIDE THE HOWARD SOIL CONSERVATION DISTRICT WITH A RED-LINED AS-BUILT OF THE SOIL FACILITY WITHIN 30 DAYS OF COMPLETION.

ENGINEER
 J. HIGGINS
 REGISTERED LANDSCAPE ARCHITECT

6-11-86
 J. HIGGINS

THESE PLANS FOR SMALL POND CONSTRUCTION, SOIL EROSION & SEDIMENT CONTROL MEET THE REQUIREMENTS OF THE HOWARD SOIL CONSERVATION DISTRICT.

APPROVED: HOWARD SOIL CONSERVATION DISTRICT DATE: _____

PLAN NUMBER: _____

MANAGED SOIL CONSERVATION DISTRICT: THE DEVELOPMENT IS APPROVED FOR SOIL EROSION & SEDIMENT CONTROL BY THE HOWARD SOIL CONSERVATION DISTRICT.

APPROVED: HOWARD SOIL CONSERVATION DISTRICT DATE: _____

REVISIONS FOR THE HOWARD SOIL CONSERVATION DISTRICT & H.C. TECHNICAL REQUIREMENTS:

THE UNITED STATES SOIL CONSERVATION SERVICE DATE: _____

THESE PLANS HAVE BEEN REVIEWED FOR THE HOWARD SOIL CONSERVATION DISTRICT & MEET TECHNICAL REQUIREMENTS FOR SMALL POND CONSTRUCTION, SOIL EROSION & SEDIMENT CONTROL.

U.S. SOIL CONSERVATION SERVICE DATE: _____

APPROVED FOR PUBLIC WATER & PUBLIC SEWERAGE SYSTEM: _____

HOWARD COUNTY HEALTH DEPARTMENT DATE: _____

APPROVED: HOWARD COUNTY OFFICE OF PLANNING & ZONING DATE: _____

APPROVED: HOWARD COUNTY DEPARTMENT OF PUBLIC WORKS DATE: _____

CHIEF, DIVISION OF LAND DEVELOPMENT & BUILDING ADMINISTRATION DATE: _____

APPROVED FOR PUBLIC WATER, PUBLIC SEWERAGE, STORM DRAINAGE SYSTEMS & ROAD: HOWARD COUNTY DEPARTMENT OF PUBLIC WORKS DATE: _____

CHIEF, BUREAU OF ENGINEERING DATE: _____

ADDRESS: _____

BUILDING # _____ STREET ADDRESS: _____

SUBDIVISION NAME _____ PLOT AREA _____ LOT/PARCEL # _____

LOT/BLK LIT _____ BLOCK # _____ ZONE _____ TOWN/CD MAP _____ SLOPE DIST. _____ ILLUSTRATED _____

WATER CAP _____ SOURCE CODE _____

ELLIOTT - FRANTZ
 BALTIMORE WASHINGTON INDUSTRIAL PARK
 BLOCK 'G' PARCELS 1001/101A
 HOWARD COUNTY INDUSTRIAL PARK ZONING DISTRICT
 SCALE 1"=40'
 ALL DIM. IN FEET
 SHEET 1 OF 1