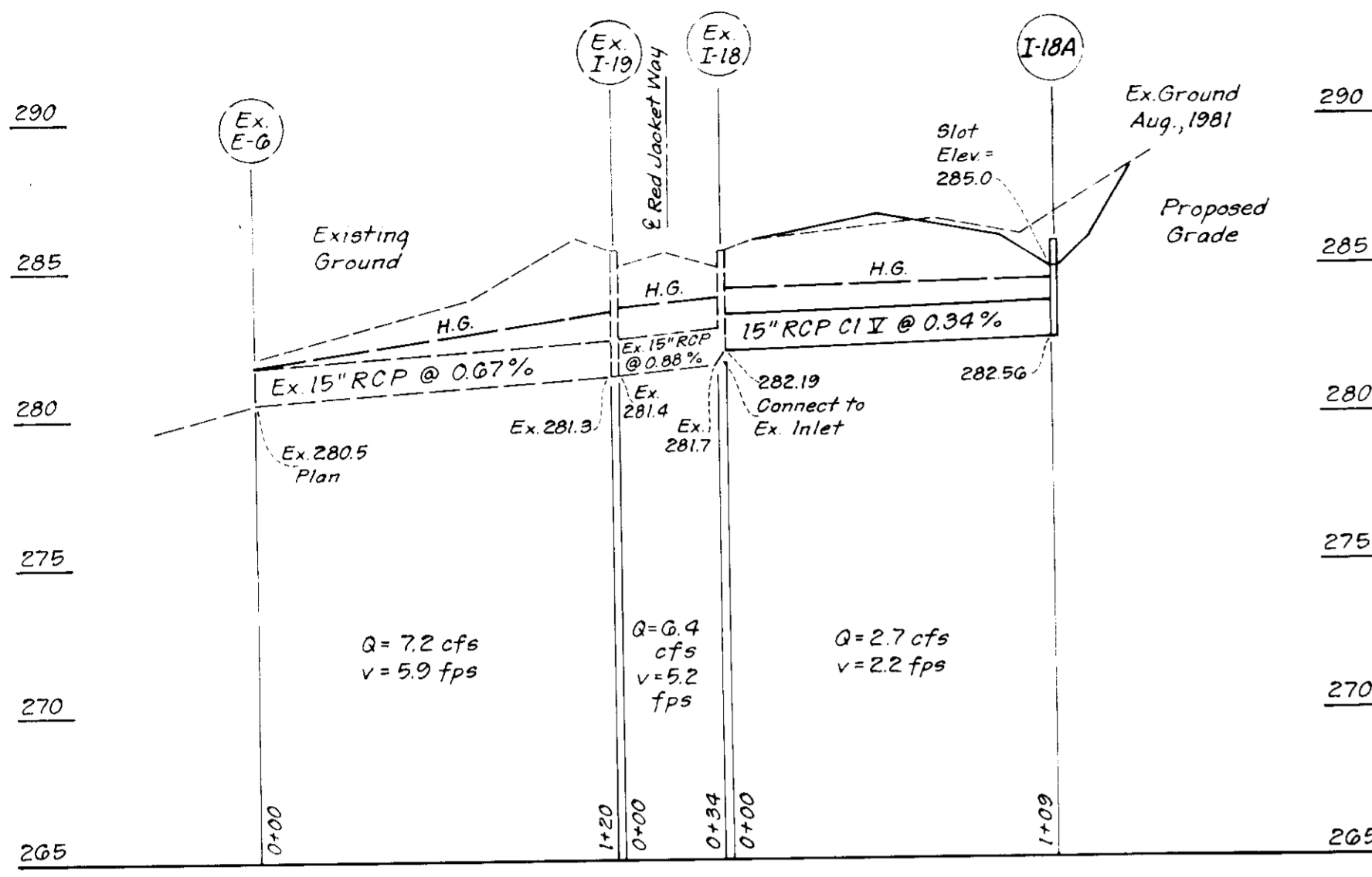


NOTE: Connect Prop. 15" RCP to Ex. I-18 and Rechannel Inlet as necessary.



**STORM DRAIN PROFILE**

SCALE: HORIZ. 1" = 50'  
VERT. 1" = 5'

**STRUCTURE SCHEDULE**

No.	TYPE	INV. IN	INV. OUT	TOP ELEVATION UPPER LOWER	REMARKS	LOCATION
I-18A	D-Inlet	-	282.56	285.83	Ho. Co. Std. Fig. 50411 2 1/2"	See Plan

\* Provide Slots in all sides.

**PIPE SCHEDULE**

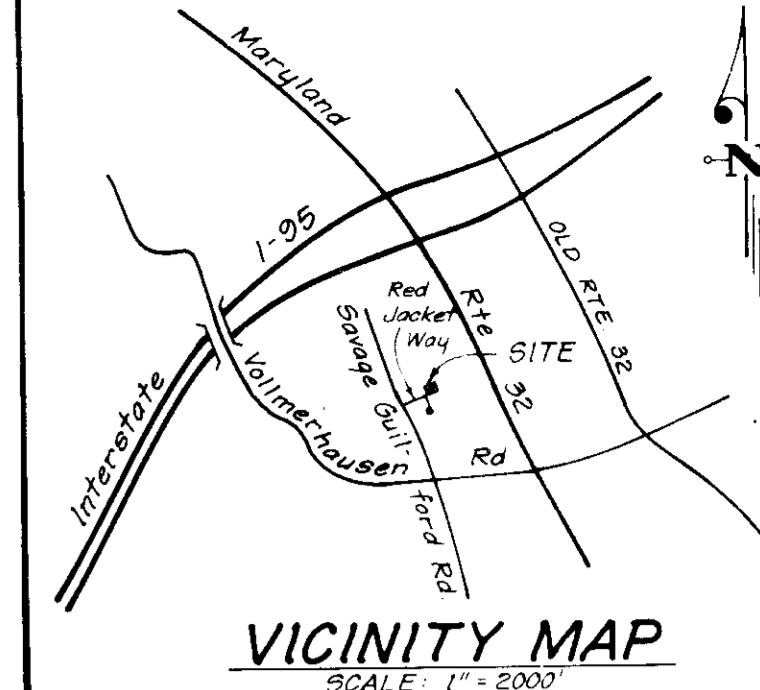
SIZE	TYPE	LENGTH
15"	RCP CI V	109 LF

**STORM DRAINAGE NOTES**

- All Storm Drain shall be constructed in accordance with the latest Details and Specifications of Howard County & Maryland SHA.
- Types of Storm Drain Structures refer to the Standard Details of Howard County and Md. SHA.
- Trench compaction for Storm Drains, within Road or Street rights-of-way limits shall be in accordance with Ho. Co. Design Manual Vol. IX (Class C Trench Bedding to be used for all Storm Drain, unless shown otherwise.)
- Information concerning underground utilities was obtained from available records, but the contractor must determine the exact location and elevation of the mains by digging test pits, by hand, at all utility crossings, well in advance of construction.
- All utility companies shall be notified 24 hrs in advance of construction.
- Zoning RSC
- Contractor or Developer shall contact the construction Inspection/ Survey Division 24 hrs before commencing work at 792-7272.
- Storm Water Management provided in central facility in Greenbriar Woods F-79-124C.

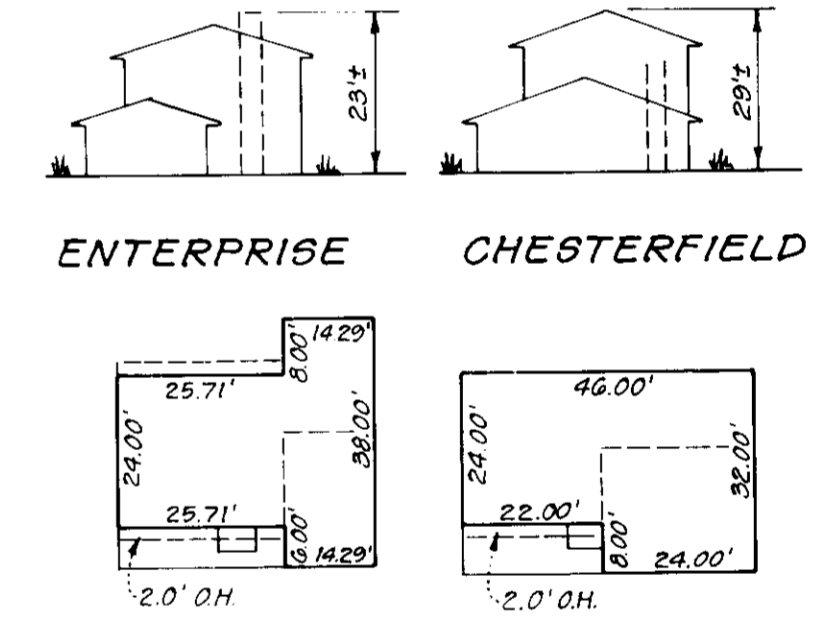
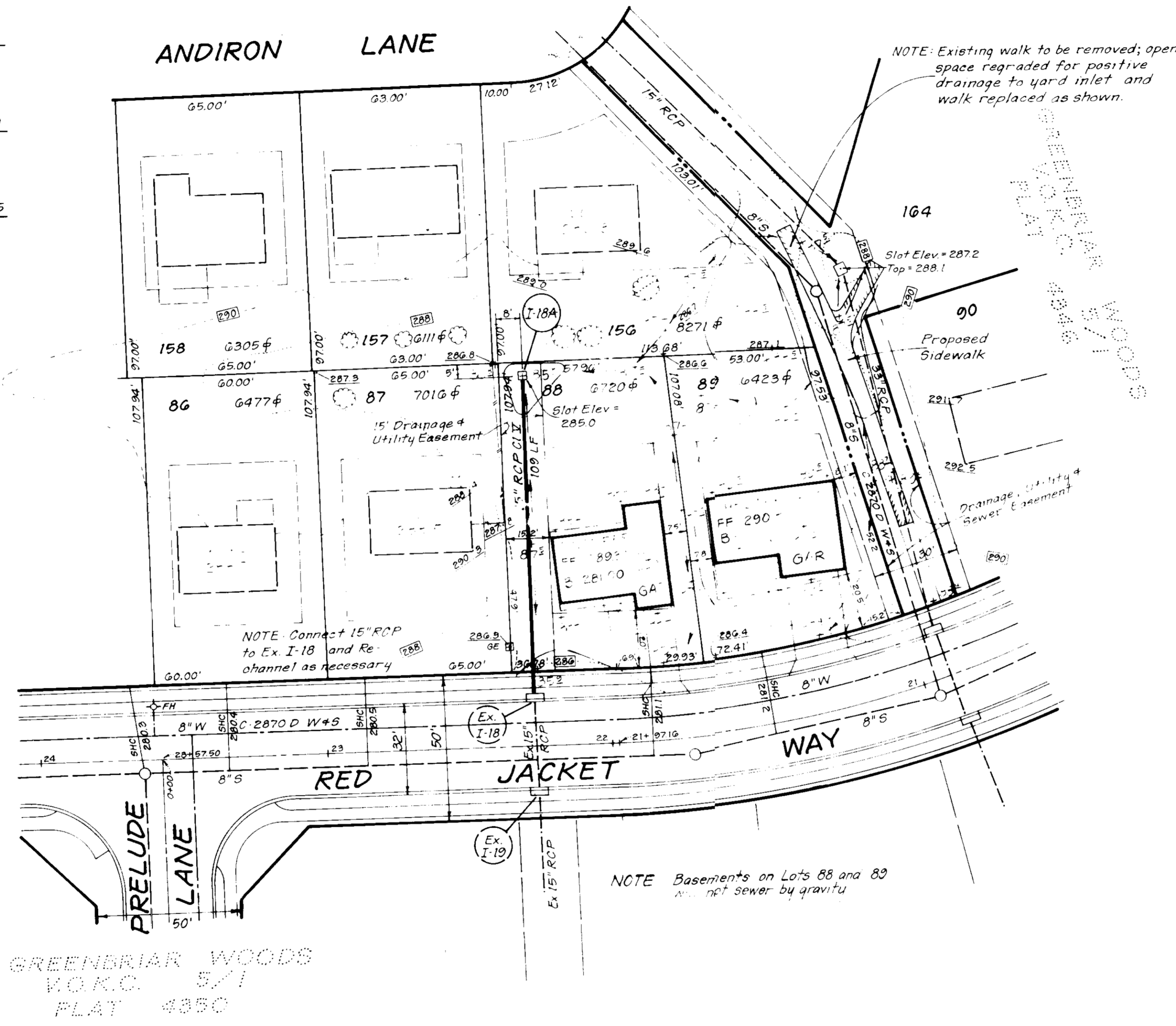
**LEGEND**

- Contour Interval 2 Ft.
- Existing Contour
- Proposed Contour
- Ex. Spot Elevation 287.1
- Prop. Spot Elevation +87-
- Direction of Drainage
- Ex. Trees to be Saved



**GENERAL NOTES**

- The Land included in this plan is zoned: R.S.C.
- The Lots shown on this plan are covered by Final Development Phase 174.
- All coordinates are based on traverse controls for Columbia established by Maps, Inc. in 1968 by Purdum & Jeschke in 1968, which controls were tied to Maryland Bureau of Control Survey Monuments and to U.S. Coast & Geodetic Survey monuments in the Columbia area.
- The area covered in this submission is located on Tax Map #42.
- The total area included on this plan is 0.302 Acres.
- All roadways are public and existing.
- Any damage to county owned rights-of-way shall be corrected at the developer's expense.
- Basements on Lots 88 and 89 will not sewer by gravity.



**TYPICAL HOUSES**

**ADDRESS CHART**

Lot No.	Street	Address
88	Red Jacket Way	8052
89	Red Jacket Way	8048

SUBDIVISION NAME	SECT. / AREA	LOTS
VILLAGE OF KINGS CONTRIVANCE	5 / 1	88 & 89

PLAT # or L.F.	BLOCK #	ZONE	TAX / ZONE	MAPELEC	DIST	CENSUS	TR
4350	5	RSC	4"	Gth	6th	6th	4

WATER CODE	SEWER CODE
E-14	5091503

APPROVED FOR PUBLIC WATER AND PUBLIC SEWERAGE SYSTEMS  
HOWARD COUNTY HEALTH DEPARTMENT

APPROVED FOR PUBLIC WATER AND PUBLIC SEWERAGE, STORM DRAINAGE SYSTEMS AND PUBLIC ROADS  
HOWARD COUNTY DEPARTMENT OF PUBLIC WORKS

APPROVED DIVISION OF LAND DEVELOPMENT  
ZONING ADMINISTRATION  
HOWARD COUNTY  
DATE 12-6-85

DESIGNED: JLS, BAF  
DRAWN: LAI  
CHECKED: JLS, JME  
DATE: October, 1985



**CLARK · FINEFROCK & SACKETT**  
ENGINEERS · PLANNERS · SURVEYORS

1131E LOCKWOOD DRIVE · SILVER SPRING, MARYLAND 20904 · (301) 593 3400

DESIGNED: JLS, BAF  
DRAWN: LAI  
CHECKED: JLS, JME  
DATE: October, 1985

**SITE DEVELOPMENT PLAN # STORM DRAINAGE PLAN**  
LOTS 88 AND 89  
**GREENBRIAR WOODS**  
VILLAGE OF KINGS CONTRIVANCE  
SECTION 5 AREA 1  
6th ELECTION DISTRICT  
HOWARD COUNTY, MARYLAND

For: RYLAND GROUP INC. (Columbia Division)  
One Knoll North #503  
Columbia, Maryland 21045

SCALE: 1" = 30'  
DRAWING: 1 of 2  
JOB NO.: 79-093  
FILE NO.: 79-093-X

**SDP-86-100**



