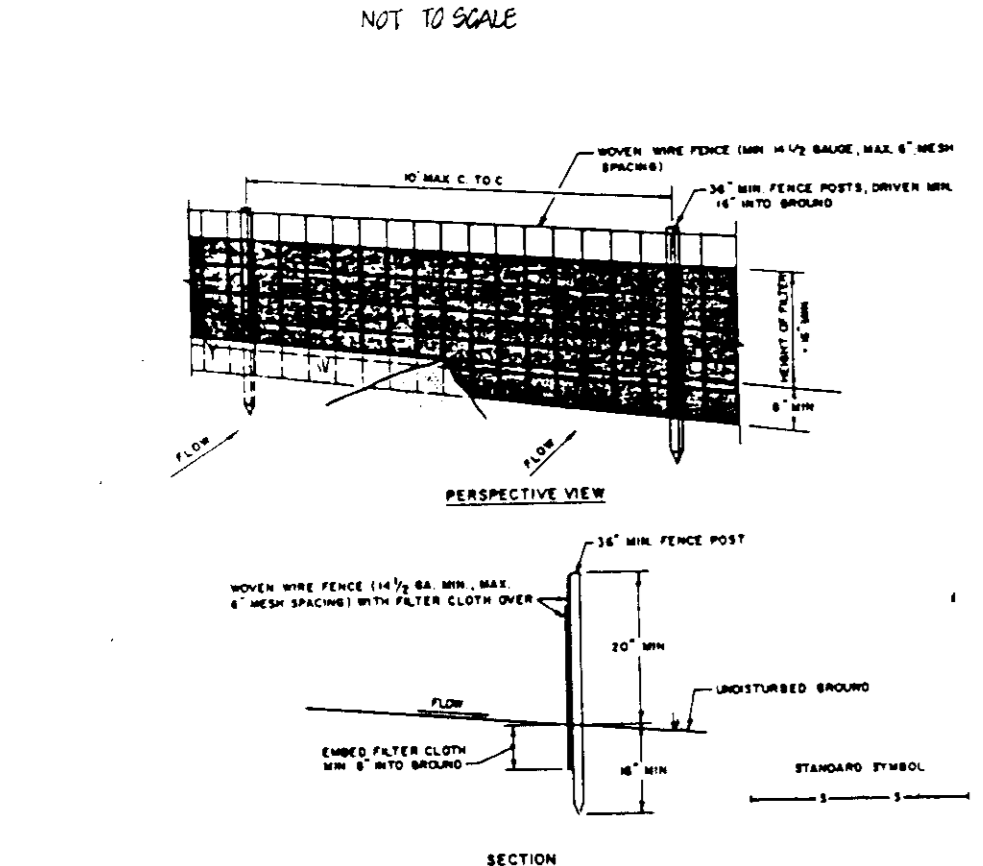


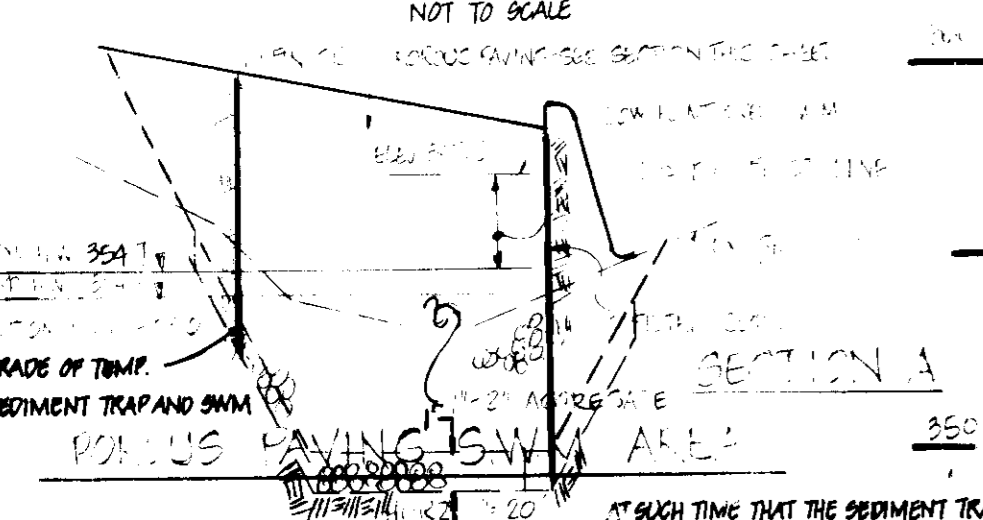
- CONSTRUCTION SPECIFICATIONS**
- Stone Size - Use 2" stone, or reclaimed or recycled concrete equivalent.
 - Length - As required, but not less than 30 feet (except on a single residence lot where a 20 foot minimum length would apply).
 - Thickness - Not less than six (6) inches.
 - Width - Ten (10) foot minimum, but not less than the full width at points where ingress or egress occurs.
 - Filter Cloth - Will be placed over the entire area prior to placing of stone. Filter will not be required on a single family residence lot.
 - Surface Water - All surface water flowing or directed toward construction entrance shall be piped across the entrance. If piping is impractical, a mountable beam with 3:1 slopes will be permitted.
 - Maintenance - The entrance shall be maintained in a condition which will prevent tracking or bleeding of sediment onto public rights-of-way. This may require periodic top dressing with additional stone as conditions demand and repair and/or cleaning of any measure used to trap sediment. All sediment applied, dropped, washed or tracked onto public rights-of-way must be removed immediately.
 - Washing - Vehicle shall be cleaned to remove sediment prior to entrance onto public rights-of-way. When washing is required, it shall be done on an area established with stone and which drains into an approved sediment trapping device.
 - Periodic inspection and needed maintenance shall be provided after each rain.

STABILIZED CONSTRUCTION ENTRANCE - S.C.E.

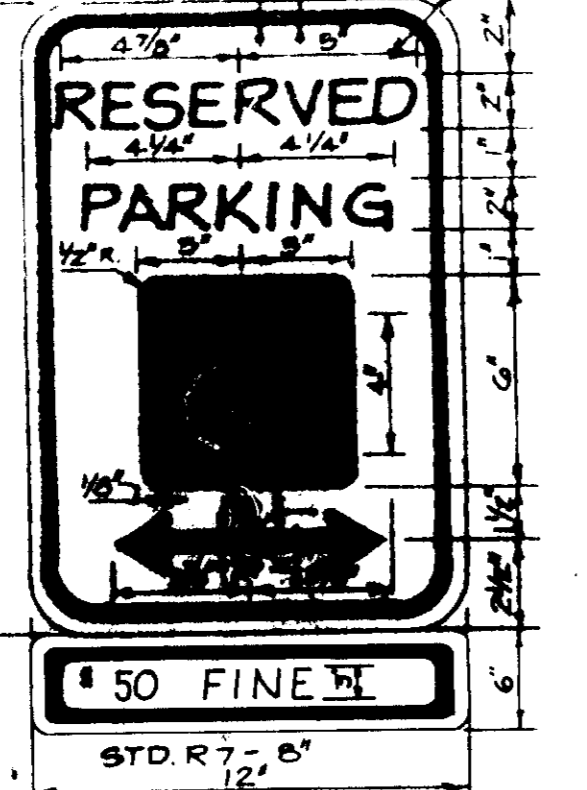


- CONSTRUCTION NOTES FOR FABRICATED SILT FENCE**
- When wire fence is fastened securely to fence posts with wire ties or staples.
 - Filter cloth to be fastened securely to wooden stakes with ties spaced every 4' to 6' and mid section.
 - When no sections of filter cloth are used, other than 3' x 3' sections, filter cloth shall be overlapped by six inches and folded.
 - Maintenance shall be performed as needed and material removed when filter develops in the silt fence.

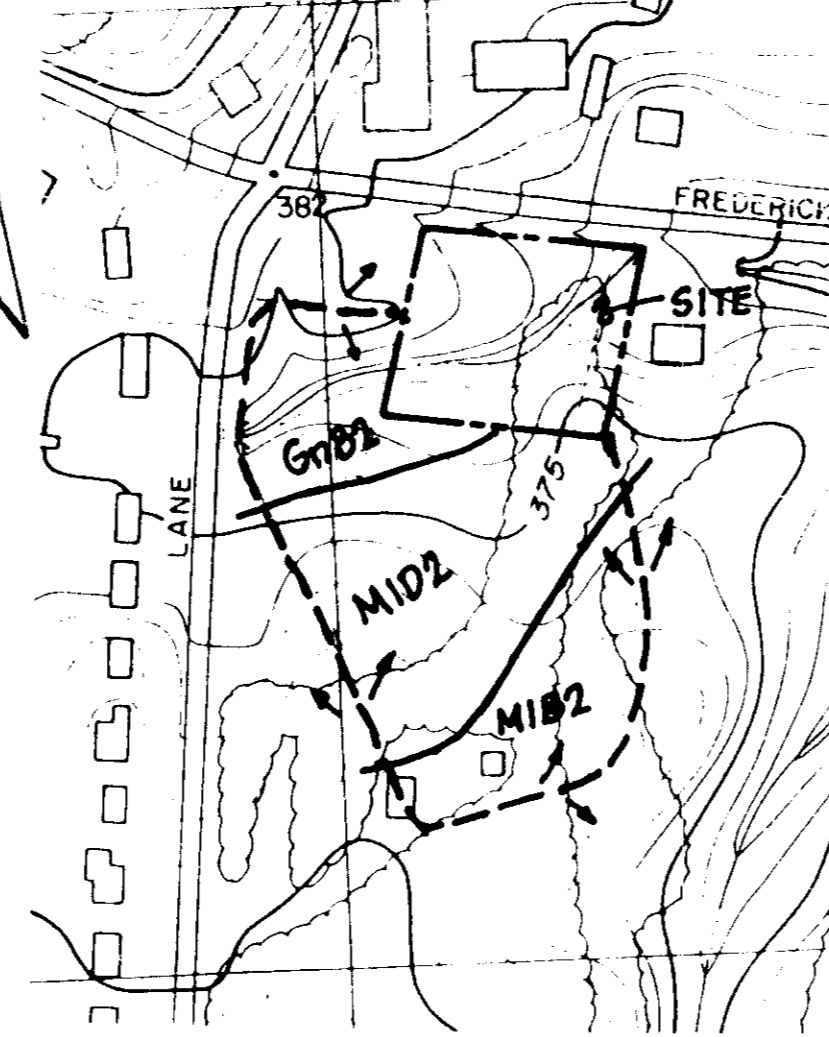
SILT FENCE - S.F.



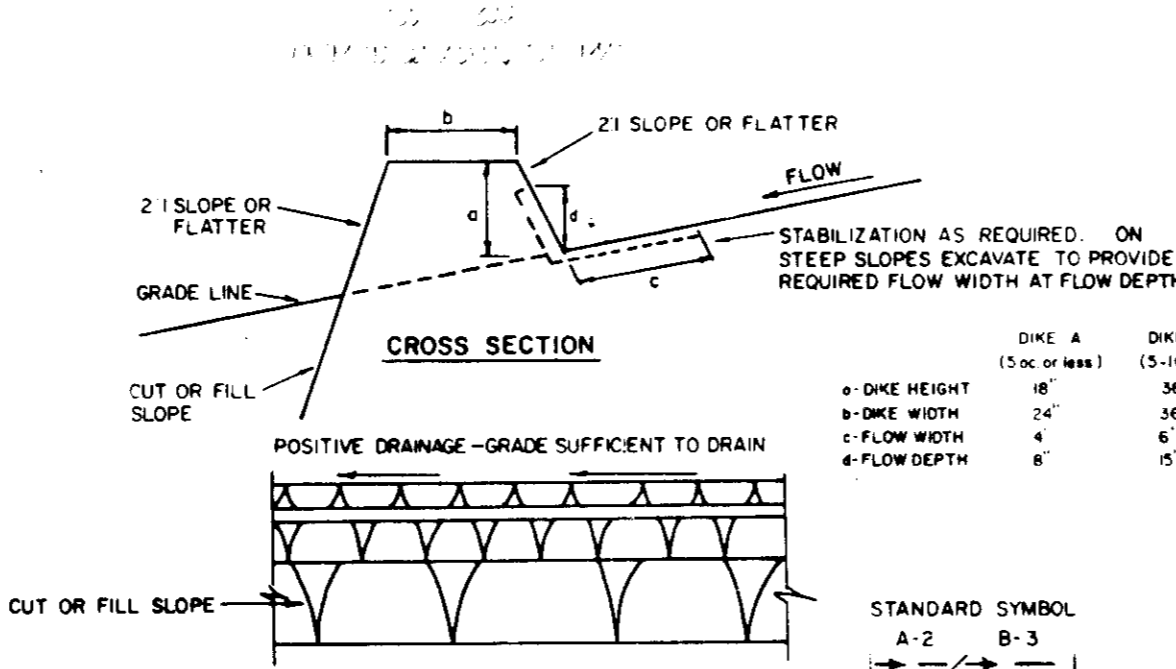
HANDICAPPED NOTES (FOR FINE SIGN)
 1. SIGN TO UTILIZE AN ALUMINUM BLANK 6' 1/2" x 12" x 1/8" THICK WITH TWO (2) SINGLE POST MOUNTING HOLES.
 2. THE TEXT AND NUMBER SHALL BE STAMPED OR ENGRAVED TO MATCH THAT ON ST. B. AND THE BACKGROUND SHALL BE RESISTANT TO WEAR. TEXT SHALL BE 3" CHARACTERS.



HANDICAPPED PARKING SIGN
NOT TO SCALE



OFFSITE D.A. : 3.2 AC.
OFFSITE DRAINAGE AREA AND SOILS MAP



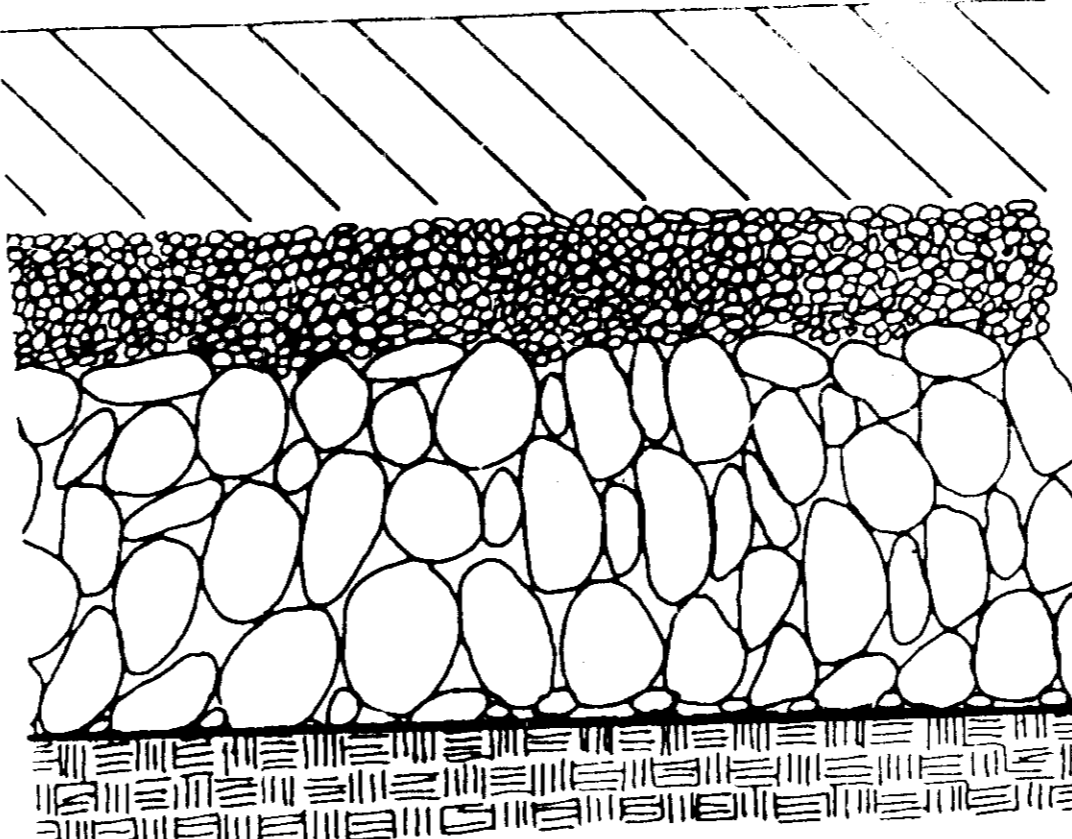
STD. BARRIER CURB
NOT TO SCALE

- CONSTRUCTION SPECIFICATIONS**
- ALL DIKES SHALL BE COMPACTED BY EARTH-MOVING EQUIPMENT.
 - DIKES SHALL HAVE POSITIVE DRAINAGE TO AN OUTLET.
 - TOP WIDTH MAY BE WIDER AND SLOPES MAY BE FLATTER IF DESIRED TO FACILITATE CROSSING BY CONSTRUCTION TRAFFIC.
 - FIELD LOCATION SHOULD BE ADJUSTED AS NEEDED TO UTILIZE A STABILIZED SAFE OUTLET.
 - EARTH DIKES SHALL HAVE AN OUTLET THAT FUNCTIONS WITH A MINIMUM OF EROSION. FLOW SHALL BE CONVEYED TO A SEDIMENT TRAPPING DEVICE SUCH AS A SEDIMENT TRAP OR SEDIMENT BASIN WHERE EITHER THE DIKE CHANNEL OR THE DRAINAGE AREA ABOVE THE DIKE ARE NOT ADEQUATELY STABILIZED.
 - STABILIZATION SHALL BE: (A) IN ACCORDANCE WITH STANDARD SPECIFICATIONS FOR SEED AND STRAW MULCH OR STRAW MULCH IF NOT IN SEEDING SEASON, (B) FLOW CHANNEL AS PER THE CHART BELOW.

TYPE OF TREATMENT	CHANNEL GRADE	DIKE A	DIKE B
1	5-3.0%	SEED AND STRAW MULCH	SEED AND STRAW MULCH
2	3.1-5.0%	SEED AND STRAW MULCH	SEED USING JUTE, OR EXCELISOR; SOD; 2" STONE
3	5.1-8.0%	SEED WITH JUTE, OR SOD; 2" STONE	LINED RIP-RAP 4-8"
4	8.1-20%	LINED RIP-RAP 4-8"	ENGINEERING DESIGN

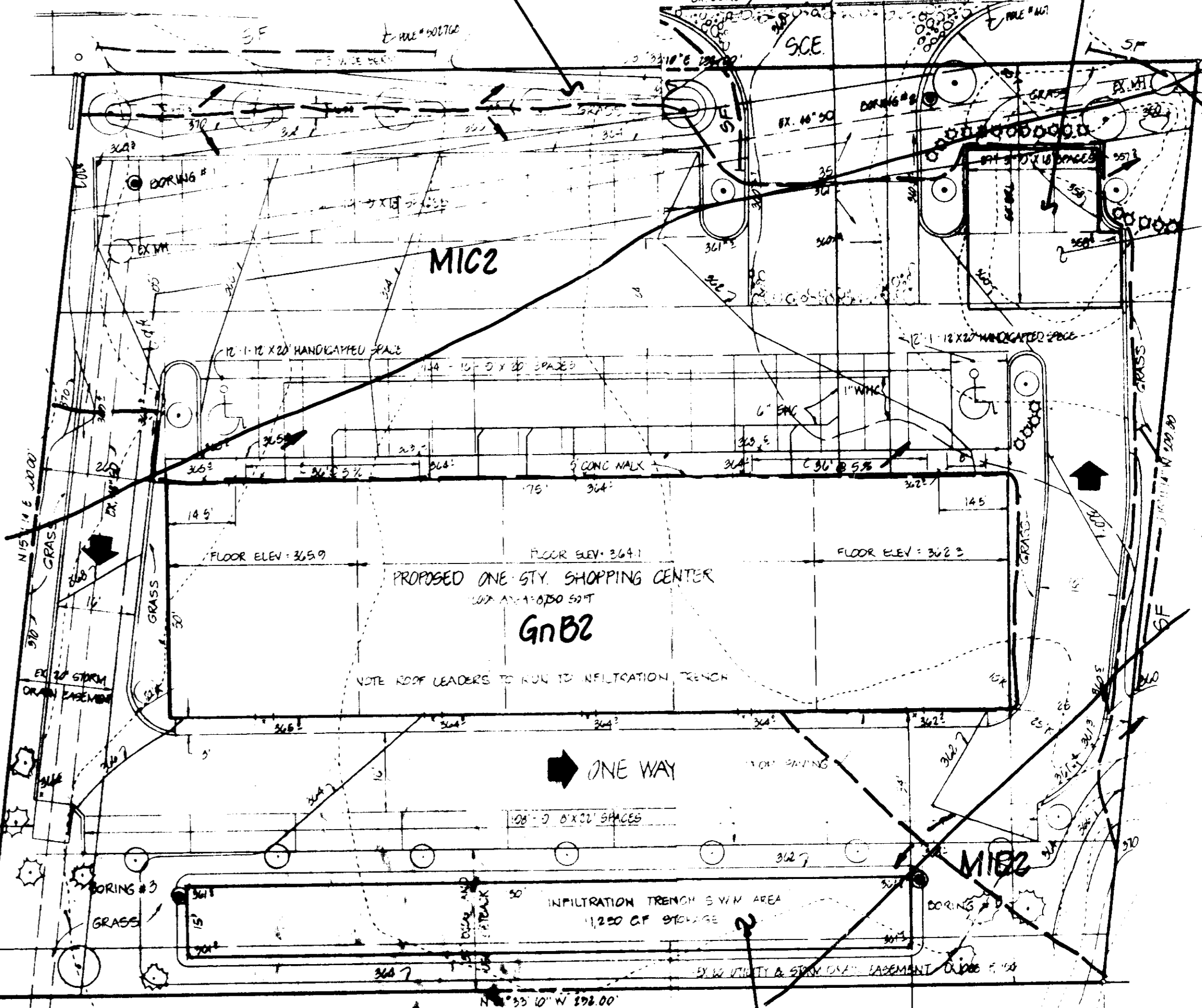
EARTH DIKE

NOT TO SCALE



POROUS PAVING DETAIL
NOT TO SCALE

- POROUS ASPHALT COURSE**
1/2" TO 3/4" AGGREGATE
ASPHALTIC MIX
3" THICK
- FILTER COURSE**
1/2" AGGREGATE
2" THICK
- RESERVOIR COURSE**
1" TO 2" AGGREGATE
VOIDS VOLUME IS DESIGNED FOR RUNOFF RETENTION
THICKNESS IS BASED ON STORAGE REQUIRED AND FROST PENETRATION
- FILTER FABRIC**
EXISTING SOIL
MINIMAL COMPACTION TO RETAIN POROSITY AND PERMEABILITY



ONSITE DRAINAGE AREA AND SOILS MAP

ONSITE DRAINAGE AREA AND SOILS MAP
 SCALE 1" = 20'
 ONSITE = 0.4 AC.
 OFFSITE = 3.2 AC.
 TOTAL = 3.7 AC.

APPROVED FOR PUBLIC WATER AND PUBLIC SEWERAGE SYSTEMS
Howard County Health Department
Joseph J. Jones 11-27-85
 COUNTY HEALTH OFFICER DATE

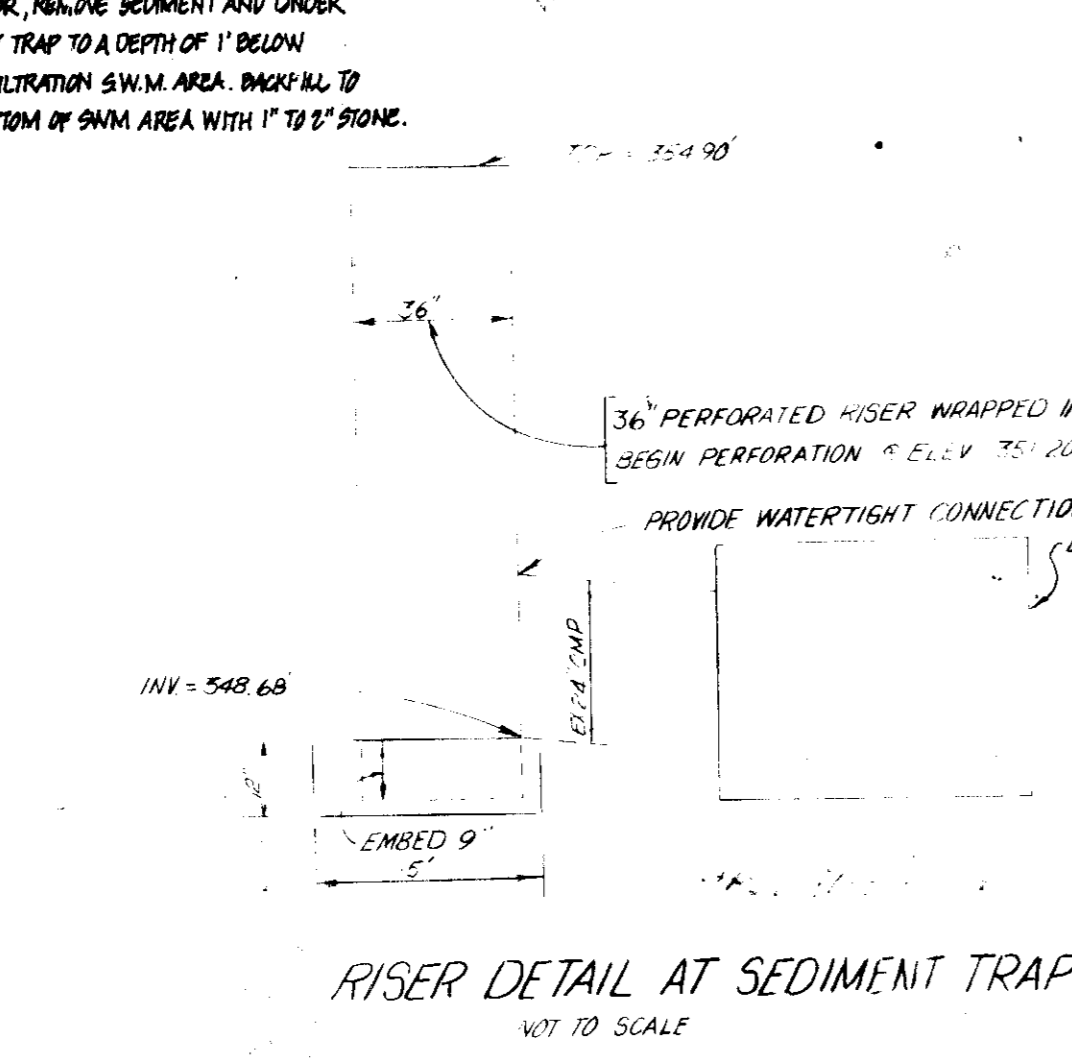
APPROVED: HOWARD COUNTY OFFICE OF PLANNING AND ZONING.
Thomas L. Harris 11-26-85
 PLANNING DIRECTOR DATE

APPROVED: FOR PUBLIC WATER, PUBLIC SEWERAGE AND STORM DRAINAGE SYSTEMS AND PUBLIC ROADS. HOWARD COUNTY DEPARTMENT OF PUBLIC WORKS.
John W. Newman 11-26-85
 CHIEF, DIVISION OF LAND DEVELOPMENT AND ZONING ADMINISTRATION DATE

APPROVED: FOR PUBLIC WATER, PUBLIC SEWERAGE AND STORM DRAINAGE SYSTEMS AND PUBLIC ROADS. HOWARD COUNTY DEPARTMENT OF PUBLIC WORKS.
John W. Newman 11-10-85
 DIRECTOR DATE

REVIEWED FOR HOWARD S.C.D. AND MEETS TECHNICAL REQUIREMENTS.
James M. Hester 10/24/85
 U.S. SOIL CONSERVATION SERVICE DATE

THIS DEVELOPMENT IS APPROVED SOIL EROSION AND SEDIMENT CONTROL BY THE HOWARD SOIL CONSERVATION DISTRICT.
Stephen L. Huber 10/24/85
 SOIL CONSERVATION DISTRICT DATE



RISER DETAIL AT SEDIMENT TRAP
NOT TO SCALE

APPROVED
DIVISION OF LAND DEVELOPMENT AND ZONING ADMINISTRATION
HOWARD COUNTY, MARYLAND
 DATE **8-14-85**
Tom Harris

ENGINEER'S CERTIFICATE
 I CERTIFY THAT THIS PLAN FOR EROSION AND SEDIMENT CONTROL REPRESENTS A PRACTICAL AND WORKABLE PLAN BASED ON PERSONAL KNOWLEDGE OF THE SITE CONDITIONS AND THAT IT WAS PREPARED IN ACCORDANCE WITH THE REQUIREMENTS OF THE HOWARD SOIL CONSERVATION DISTRICT.
Thomas L. Harris 10/22/85
 ENGINEER DATE

DEVELOPER'S CERTIFICATE
 I CERTIFY THAT ALL DEVELOPMENT AND CONSTRUCTION WILL BE DONE ACCORDING TO THIS PLAN OF DEVELOPMENT AND PLAN FOR EROSION AND SEDIMENT CONTROL AND THAT ALL RESPONSIBLE PERSONNEL INVOLVED IN THE CONSTRUCTION PROJECT WILL HAVE A CERTIFICATE OF ATTENDANCE AT A DEPARTMENT OF NATURAL RESOURCES APPROVED TRAINING PROGRAM FOR THE CONTROL OF SEDIMENT AND EROSION BEFORE BEGINNING THE PROJECT. I ALSO AUTHORIZE PERIODIC ON-SITE INSPECTIONS BY THE HOWARD SOIL CONSERVATION DISTRICT OR THEIR AUTHORIZED AGENTS, AS ARE DEEMED NECESSARY.
Thomas L. Harris 10/22/85
 DEVELOPER DATE



OWNER & DEVELOPER
KNIGHT ENTERPRISES, INC.
 916 STEVE KNIGHT
 9945 ELLICOTT MILLS DRIVE
 ELLICOTT CITY, MARYLAND 21043

boender & associates
 inc.
 consulting engineers
 land surveyors
 land planners

COURTHOUSE SQUARE
 3565 ELLICOTT MILLS DRIVE
 ELLICOTT CITY, MD 21043
 301-485-7777