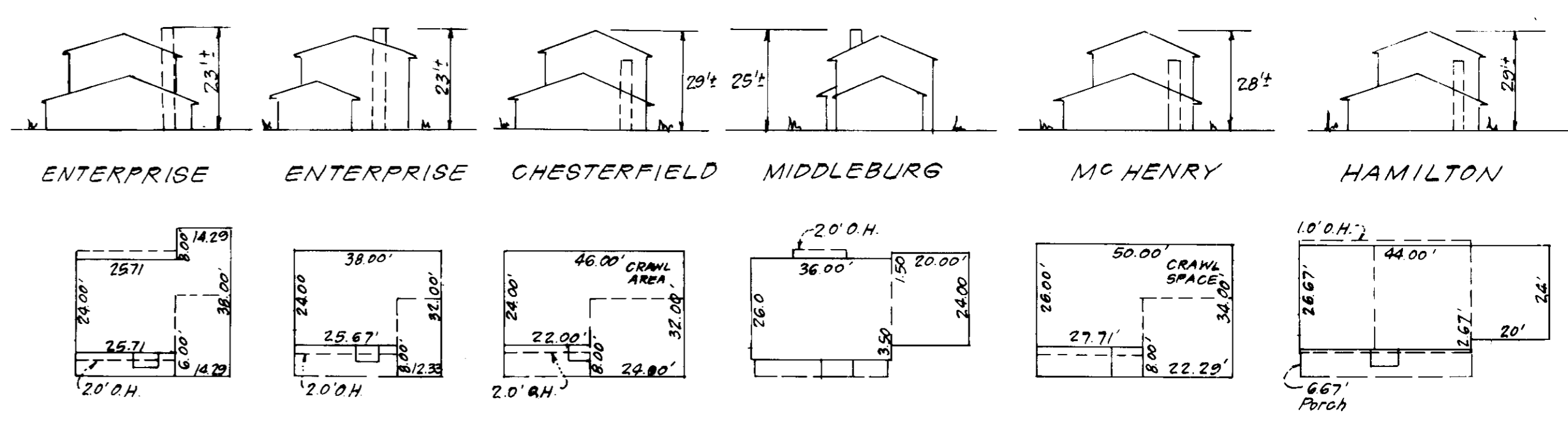
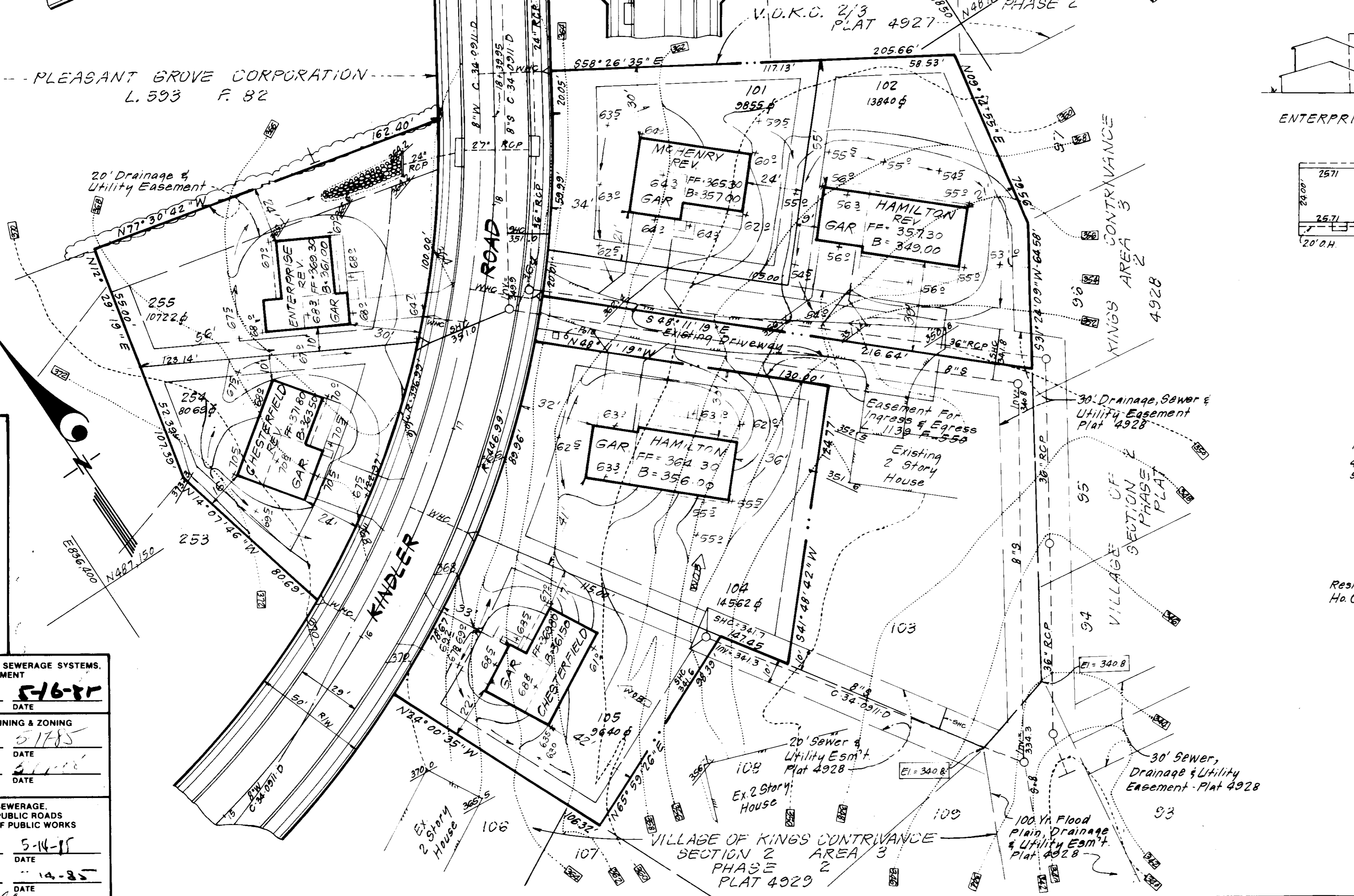


- GENERAL NOTES:**
- The Land included in this plan is zoned New Town (SFMD).
 - The Lots shown on this plan are covered by Final Development Plan Phase 178, Part II.
 - All coordinates shown hereon are based on Howard County Geodetic Control Traverse which is based upon the Maryland State Plane Coordinate System.
 - The area covered is located on Tax Map # 42.
 - The total area included in this plan is 2.9541 Acres.
 - All roadways are public & existing.
 - Any damage to county owned rights-of-way or paving shall be corrected at the developer's expense.
 - Number of Lots: 12.
 - Storm Water Management is provided by F-80-06c.

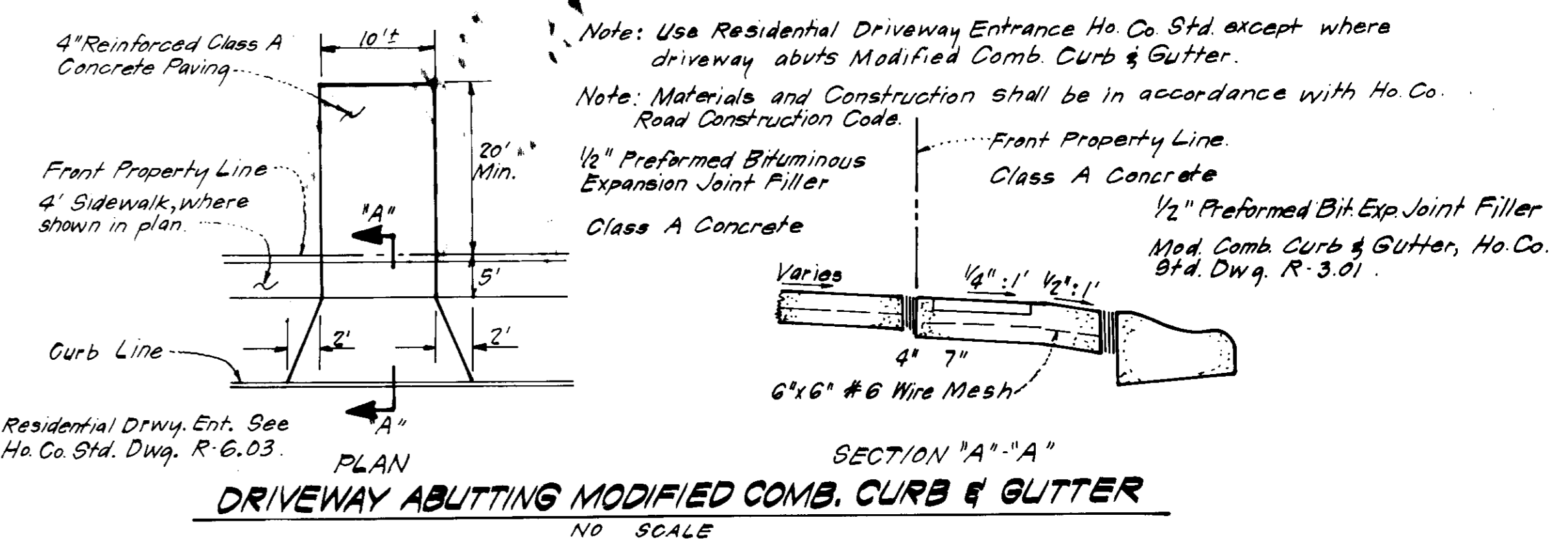
- LEGEND:**
- Contour Interval 2 Ft.
 - Existing Contour
 - Proposed Contour
 - Spot Elevation + 50.5
 - Direction of Drainage
 - Spot Elevation (Existing) 351.6
 - Walk-out Basement

LOT NO.	STREET ADDRESS
101	7255 Kindler Road
102	7259 "
104	7267 "
105	7271 "
123	7406 First League
160	7402 "
224	7206 Kindler Road
255	7204 "
508	7399 "
509	7418 First League
510	7414 "
511	7410 "

PLEASANT GROVE CORPORATION
L. 593 F. 82



TYPICAL HOUSES
NO SCALE



DRIVEWAY ABUTTING MODIFIED COMB. CURB & GUTTER
NO SCALE

4-26-85

APPROVED FOR PUBLIC WATER AND PUBLIC SEWERAGE SYSTEMS,
HOWARD COUNTY HEALTH DEPARTMENT
COUNTY HEALTH OFFICER DATE 5-16-85

APPROVED HOWARD COUNTY OFFICE OF PLANNING & ZONING
PLANNING DIRECTOR DATE 5-17-85

APPROVED FOR PUBLIC WATER AND PUBLIC SEWERAGE,
STORM DRAINAGE SYSTEMS AND PUBLIC ROADS
HOWARD COUNTY DEPARTMENT OF PUBLIC WORKS
DIRECTOR DATE 5-14-85

CHIEF BUREAU OF ENGINEERING DATE 5-14-85



CLARK · FINEFROCK & SACKETT ENGINEERS · PLANNERS · SURVEYORS		11315 LOCKWOOD DRIVE · SILVER SPRING, MARYLAND 20904 · (301) 593-3400
DESIGNED J.M.E.	SITE DEVELOPMENT PLAN LOTS 101, 102, 104, 105, 159, 160, 254, 255 & LOTS 508 THRU 511	
DRAWN V.L.B.	SCALE 1" = 30'	
CHECKED J.M.E.	DRAWING 1 OF 3	
DATE March 1985	JOB NO. 83-055	
FOR: THE RYLAND GROUP, INC. One Knoll North, Suite 503 Columbia, Maryland 21045		FILE NO. 183 055-X

