

THIS DEVELOPMENT PLAN IS APPROVED FOR SOIL EROSION AND SEDIMENT CONTROL BY THE HOWARD SOIL CONSERVATION DISTRICT.

Approved: *Stephen S. Ashby* 4-17-85  
Howard S.C.D.

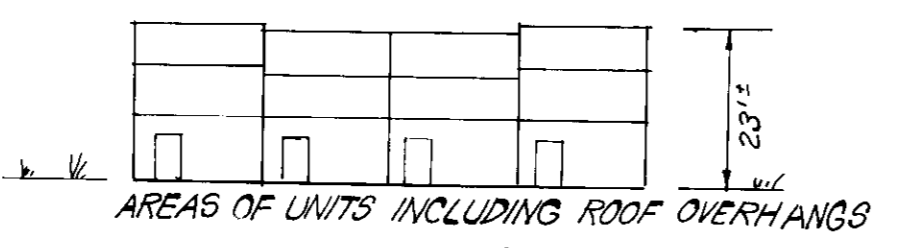
Reviewed for HOWARD S.C.D. and meet Technical Requirements  
Signature: *Howard S.C.D.* Date: 4-17-85  
U.S. Soil Conservation Service

**GENERAL NOTES:**

- The land included in this plan is zoned: R-5A.
  - All coordinates are based on Howard County Control Monuments No. 1741002-R and 1741003-R.
  - The total area included in this plan is 0.284 Acres.
  - All roadways are public and existing.
  - Any damage to county owned rights of way or paving shall be corrected at the developer's expense.
  - Total number of lots: 6
  - Number of parking spaces required: 142 provided: 144.
  - Maximum building coverage is 40%  
Carlisle Units  $\frac{540}{2.4} = 1350 \text{ sq ft}$  Minimum Lot Size
  - The contractor or developer shall contact the Construction Inspection Survey Division, 24 hours in advance of commencement of work at 792-7272.
- NOTE: Sediment and Erosion Control for this site is provided by previously approved Road Construction Plans F-84-22.

**LEGEND:**

- Contour Interval: 2 ft
- Existing Contour:
- Proposed Contour:
- Spot Elevation:
- Direction of Drainage:
- Existing trees to be retained:
- Walk-Out basement:



TYPICAL UNITS  
No Scale

**SURVEYORS CERTIFICATE**

I hereby certify that the information contained hereon is the same as shown on previously approved SDP-85-29 with the following exceptions:

1. House Type and Grading have been revised on Lots 265-270.

I further certify that the Sediment & Erosion control measures, as previously approved, will not be affected, the grading is substantially the same as originally approved, the building setbacks comply with Howard County Zoning and Subdivision Regulations, and the lot has the same geometric configuration as shown on the respective recorded Subdivision Plat.

2-12-85 Date  
*Donald B. Sackett*  
Registered Land Surveyor  
No. 10050

LOT	STREET ADDRESS
265	0221 REDBRIDGE COURT
266	0225 " "
267	0223 " "
268	0221 " "
269	0219 " "
270	0217 " "

APPROVED FOR PUBLIC WATER AND PUBLIC SEWERAGE SYSTEMS  
HOWARD COUNTY HEALTH DEPARTMENT  
*Joseph P. Boyce* 4-25-85  
DATE

APPROVED HOWARD COUNTY OFFICE OF PLANNING & ZONING  
DATE 4-26-85

APPROVED FOR PUBLIC WATER AND PUBLIC SEWERAGE,  
STORM DRAINAGE SYSTEMS AND PUBLIC ROADS  
HOWARD COUNTY DEPARTMENT OF PUBLIC WORKS  
*Shirley F. Newman* 4-22-85  
DATE

*Robert E. Robinson* 4-14-85  
DATE

OWNER: BRANLEY DEVELOPMENT CORP.  
8501 FINEWATER DRIVE, SUITE 105  
COLUMBIA, MD 21045

**CLARK - FINEFROCK & SACKETT**  
ENGINEERS - PLANNERS - SURVEYORS  
1131F LOCKWOOD DRIVE • SILVER SPRING, MARYLAND 20904

DESIGNED: C.F.S.  
DRAWN: C.F.S.  
CHECKED: C.F.S.  
DATE: 2-12-85

REVISED SITE DEVELOPMENT PLAN  
LOTS 265-270

**SETTLER'S LANDING**

OWNER: BRANLEY DEVELOPMENT CORP.  
8501 FINEWATER DRIVE, SUITE 105  
COLUMBIA, MD 21045

SDP-85-127