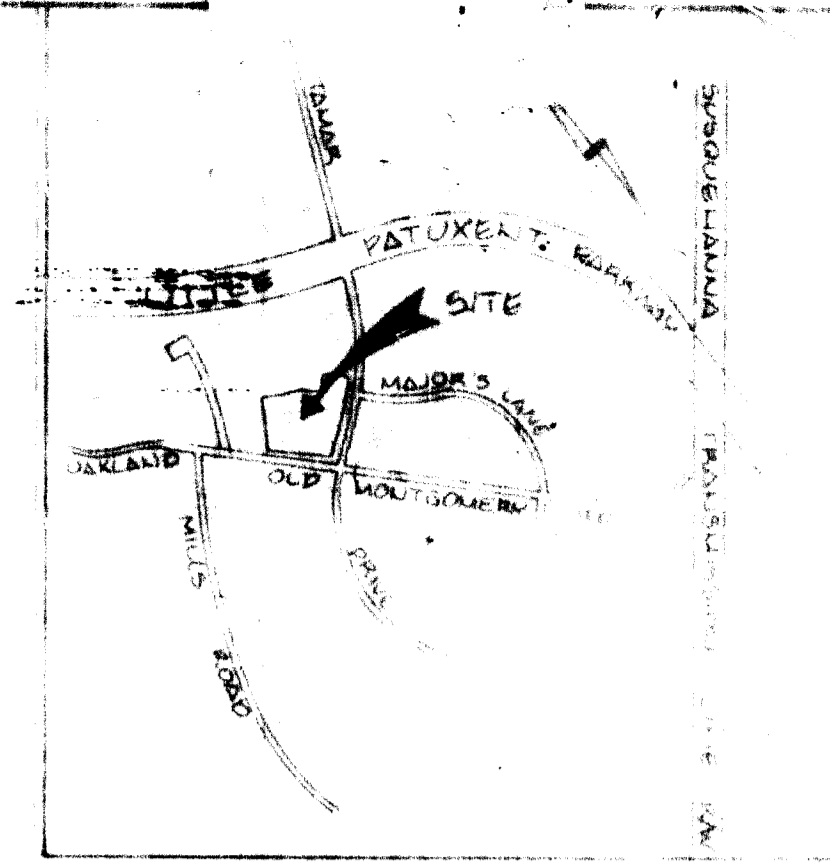
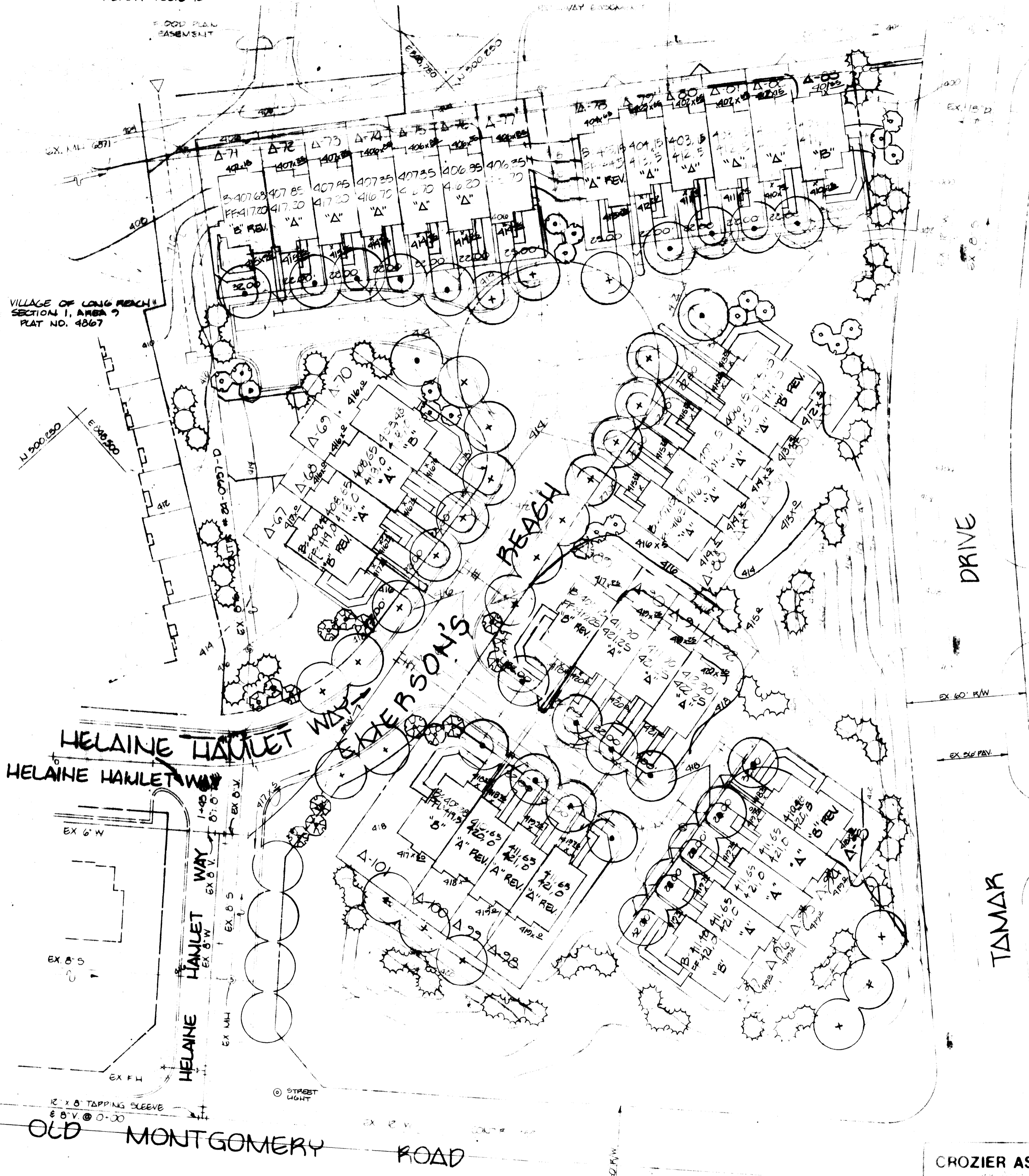


VILLAGE OF LONG REACH
SECTION 1, AREA 9
P.B. 28, FOLIO 11
P.B. 27, FOLIO 92

VILLAGE OF LONG REACH
SECTION 1, AREA 6
P.B. 23, FOLIO 19
PARCEL B



VICINITY MAP
SCALE 1"=1600'



PLANT LIST

QUAN.	PLANT NAME	SIZE	RECDT
28	SHEDDIA TRIACANTHOS (INERMIS) THORNLESS HONEYLOCUST	2 1/2" - 3" CAL., 12-14' HGT.	B+B
24	ACER SACHINAWASH SUGAR MAPLE	2 1/2" - 3" CAL., 12-14' HGT.	B+B
4	QUERCUS PALMATEA PIN OAK	2 1/2" - 3" CAL., 12-14' HGT.	B+B
21	MALUS RADIANZA RADIANT CRAB	2 - 2 1/2" CAL., 8-10' HGT.	B+B
16	PRUNUS YEDONENSIS YOSHINO CHERRY	2 - 2 1/2" CAL., 8-10' HGT.	B+B
73	PINUS THUNBERGII JAPANESE BLACK PINE	6-8' HGT.	B+B

PLANTING PLAN
VILLAGE OF LONG REACH
SECTION 1, AREA 9
LOT 3, LOTS A67 TO A102
A RESUBDIVISION OF LOTS A31 TO A39
TAX MAP 36 - PARCEL B & PART OF PARCEL 391
DEED REF. 684/136 (5-30-74)
ELECTION DISTRICT 6 - COLUMBIA - HOWARD CO. MAP 242

APPROVED: For Public Water and Public Sewerage Systems
Howard County Health Department.
James P. ... 2-11-85
DATE

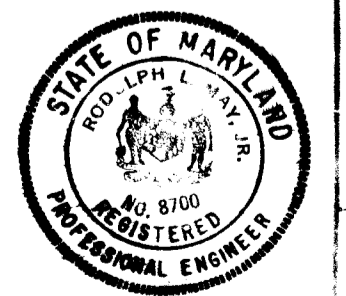
APPROVED: Howard County Department of Planning and Zoning.
James P. ... 2-15-85
DATE
Chief, Division of Land Development and Zoning Administration.

APPROVED: For Public Water and Public Sewerage, Storm
Drainage Systems and Public Roads.
Howard County Department of Public Works.
James P. ... 2-15-85
DATE
Chief, Bureau of Engineering

APPROVED
PLANNING BOARD
OF HOWARD COUNTY
DATE 10-3-84
MA/STO

CROZIER ASSOCIATES

EVANS, HAGAN & HOLDEFEP, INC.



ENGINEERS, LAND PLANNERS & SURVEYORS
1092 WEST STREET LAUREL, MARYLAND 21104
22 POPULAR STREET / CAMBRIDGE MARYLAND 21613
111 JOHN STREET WESTMINSTER, MARYLAND 21157
5312 BELAIR ROAD BALTIMORE, MARYLAND 21206
214185

SDP-85-34. 049-09-2/8