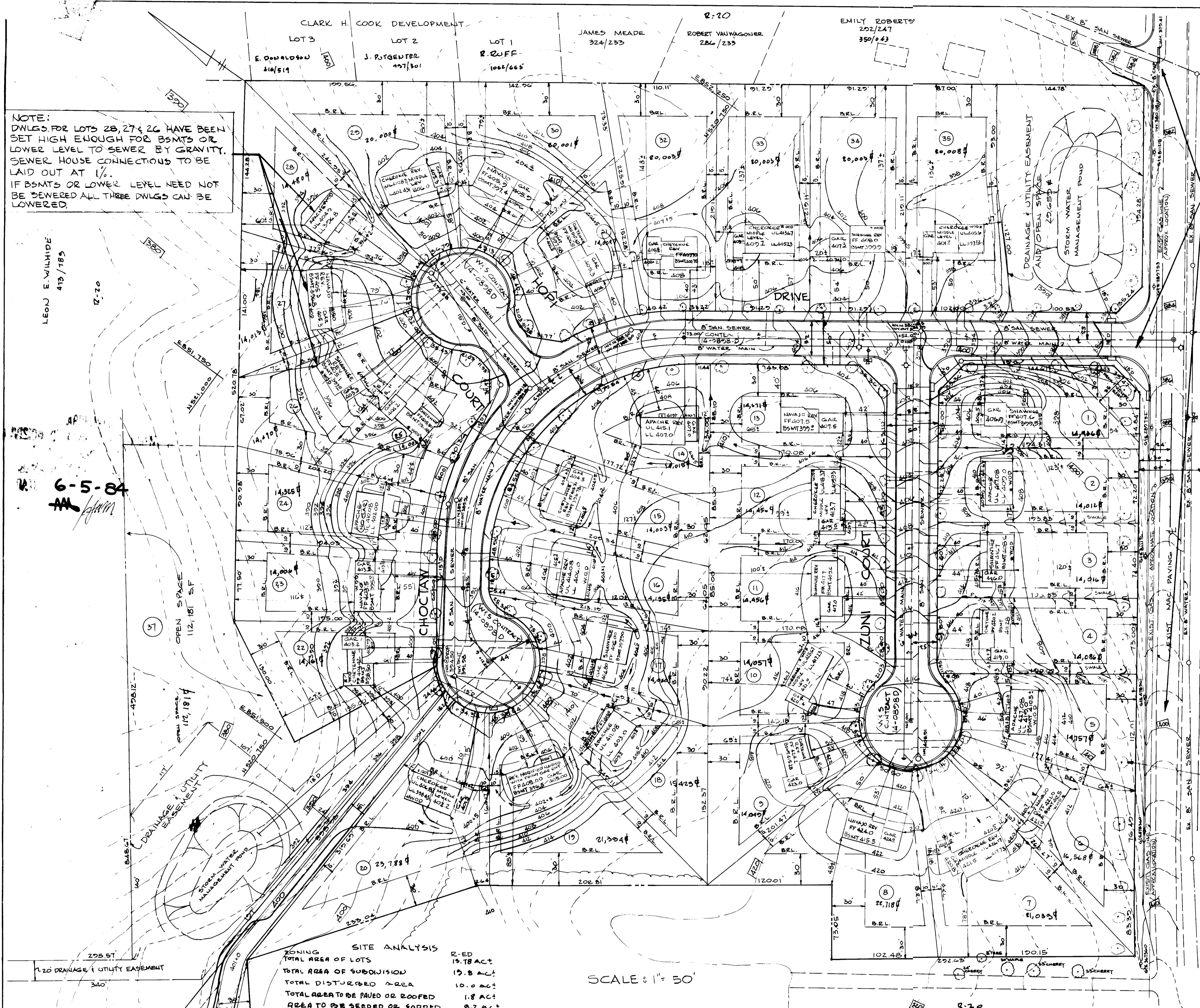


NOTE: DWGS. FOR LOTS 28, 27 & 26 HAVE BEEN SET HIGH ENOUGH FOR BSMTS OR LOWER LEVEL TO SEWER BY GRAVITY. SEWER HOUSE CONNECTIONS TO BE LAID OUT AT 1/4". IF BSMTS OR LOWER LEVEL NEED NOT BE SEWERED ALL THREE DWGS CAN BE LOWERED.

6-5-84
M.M.H.



BSMT. CAN'T BE SEWERED BY GRAVITY. SEWER SERVICE FOR 1ST FLOOR TO HAVE A SLOPE OF 1/4".

VEHICULAR ACCESS (8000) RESTRICTED TO 943.00' ±

TOLL HOUSE ROAD

ENGINEER'S CERTIFICATE
I CERTIFY THAT THIS PLAN FOR DEVELOPMENT AND EROSION AND SEDIMENT CONTROL REPRESENTS A PRACTICAL AND WORKABLE PLAN BASED ON MY PERSONAL KNOWLEDGE OF THE SITE CONDITIONS. THIS PLAN WAS PREPARED IN ACCORDANCE WITH THE REQUIREMENTS OF THE HOWARD SOIL CONSERVATION DISTRICT.

Walter Park 5/11/84

REVIEWED FOR THE HOWARD SOIL CONSERVATION DISTRICT & MEETS TECHNICAL REQUIREMENTS.

M.M.H. 7-5-84
US SOIL CONSERVATION DISTRICT DATE

HOWARD SOIL CONSERVATION DISTRICT
THIS DEVELOPMENT PLAN IS APPROVED FOR SOIL EROSION & SEDIMENT CONTROL BY THE HOWARD SOIL CONSERVATION DISTRICT.

Stephen L. Fisher 6/11/84
APPROVED H.S.C.D. DATE

APPROVED: FOR PUBLIC WATER & PUBLIC SEWERAGE SYSTEMS.
HOWARD COUNTY HEALTH DEPARTMENT
James J. ... 6-30-84
COUNTY HEALTH OFFICER DATE

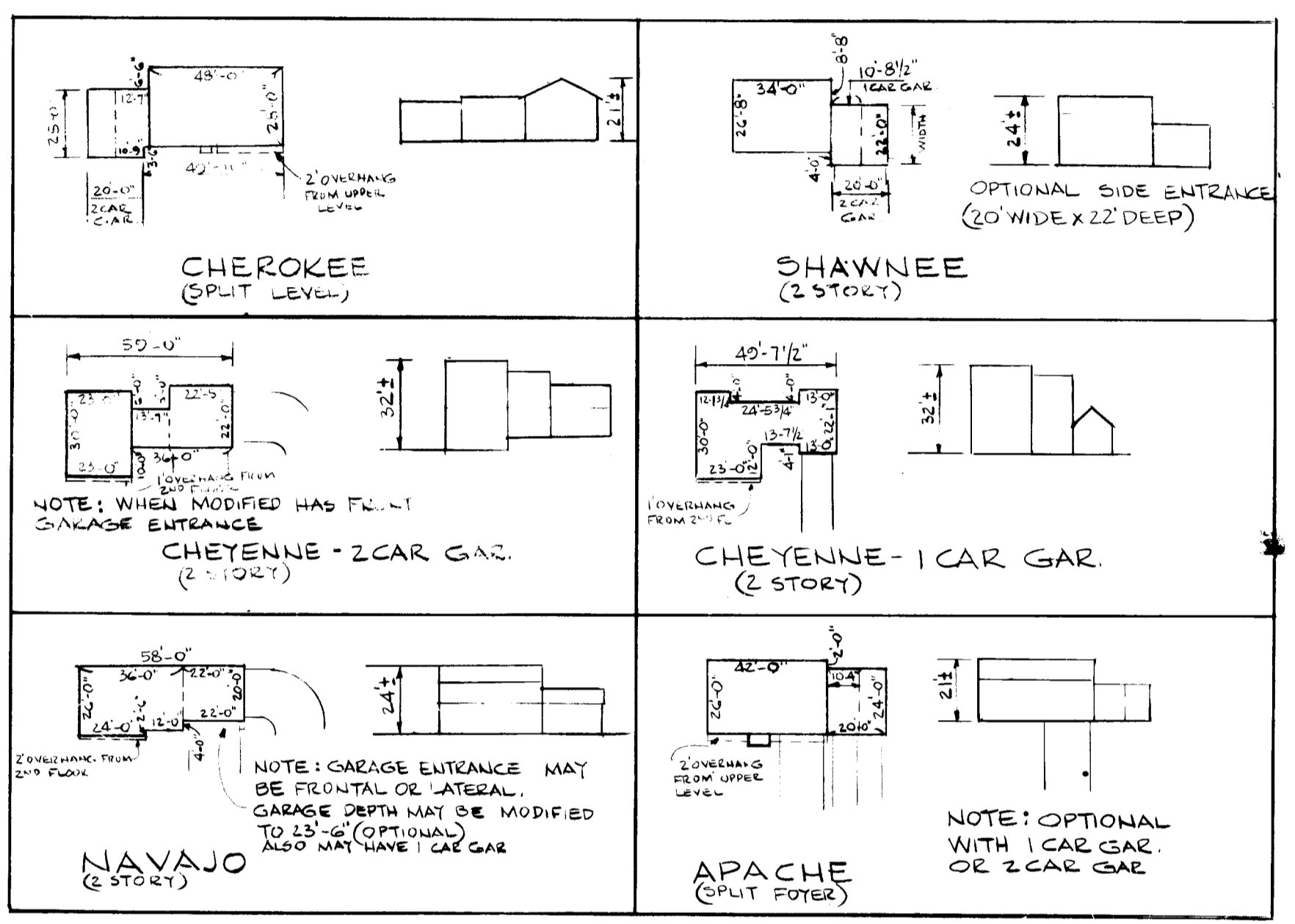
APPROVED: HOWARD COUNTY OFFICE OF PLANNING & ZONING
Thomas J. ... 7-5-84
PLANNING DIRECTOR DATE

... 7-5-84
CHIEF DIVISION OF LAND DEVELOPMENT & ZONING ADMINISTRATION DATE

IMPORTANT
PRIOR TO ANY DIGGING NEAR GAS LINE OR ON THE STREET BED OF OF MD 287 CALL MISS UTILITY AT 552-0100. BALTO GAS & ELECTRIC CO. @ 685-0123. TELEPHONE CO @ 393-3923

Lot No.	STREET ADDRESS
1	4001 ZUNI COURT
2	4002
3	4003
4	4004
5	4005
6	4006
7	4007
8	4008
9	4009
10	4010
11	4011
12	4012
13	4013
14	4014
15	4015
16	4016
17	4017
18	4018
19	4019
20	4020
21	4021
22	4022
23	4023
24	4024
25	4025
26	4026
27	4027
28	4028
29	4029
30	4030
31	4031
32	4032
33	4033
34	4034
35	4035

LOCATION MAP
SCALE: 1" = 600'



NOTE: ALL SEDIMENT CONTROL MEASURES FOR THIS SITE WERE APPROVED UNDER SDP 84-60. ALL WORK SHALL BE DONE IN ACCORDANCE WITH THE SEDIMENT CONTROL SHOWN & SPECIFIED ON SDP 84-60.

20' WIDE LANDSCAPE EDGE WITH MIN. 2 1/2" INCH CALIPER TREES AT AN AVERAGE OF 30' ON CENTER AND 3' HIGH

SUBDIVISION NAME	KEYWAYDIN	SECT./AREA	N.A.	LOT/PARCEL #	1-25
PLAT # OR DEED	4903-4905	BLOCK #	18	ZONE	R-ED
TAX/ZONE MAP	24	ELEC. DIST.	2ND	CENSUS TR.	6025
WATER CODE	1-F04	SEWER CODE	1400530		

ENGINEER
HUDKINS ASSOCIATES, INC.
200 E. JOPPA ROAD
TOWSON, MARYLAND 21284 TEL 828-0900

DEVELOPER
POTOMAC BUILDING & DEVELOPMENT CORP.
12808 MIDDLEVALE LANE
SILVER SPRING, MARYLAND 20906
TEL 384-0400

APPROVED: FOR PUBLIC WATER, SEWERAGE & STORM DRAINAGE SYSTEMS & PUBLIC ROADS.
HOWARD COUNTY DEPT. OF PUBLIC WORKS.

John F. Neuman 6-26-84
DIRECTOR DATE

William S. ... 6-5-84
CHIEF, BUREAU OF ENGINEERING DATE

"REVISIONS TO SDP 84-60"
KEYWAYDIN
SECOND ELECTION DISTRICT
LOT 3 & THRU 35
HOWARD COUNTY, MARYLAND
PLATS: 4903, 4904 & 4905 TAX MAP 24 PARCEL 261

REVISED SITE DEVELOPMENT PLAN

DATE	5-1-1984	
REVISIONS		1 OF 1