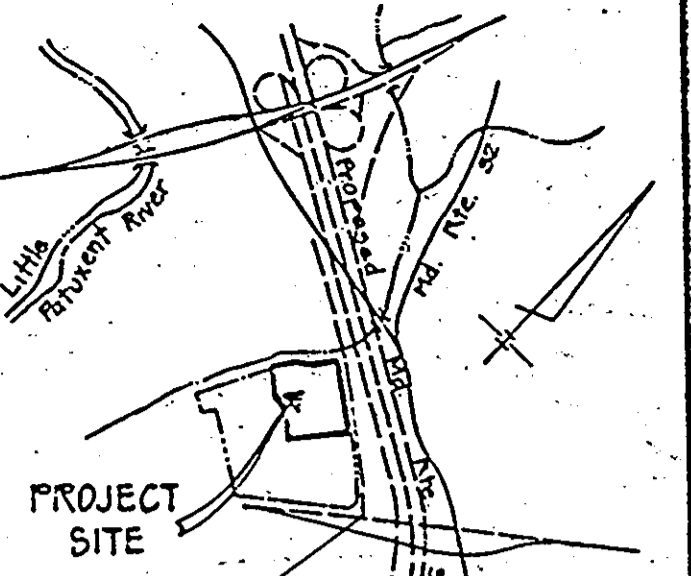
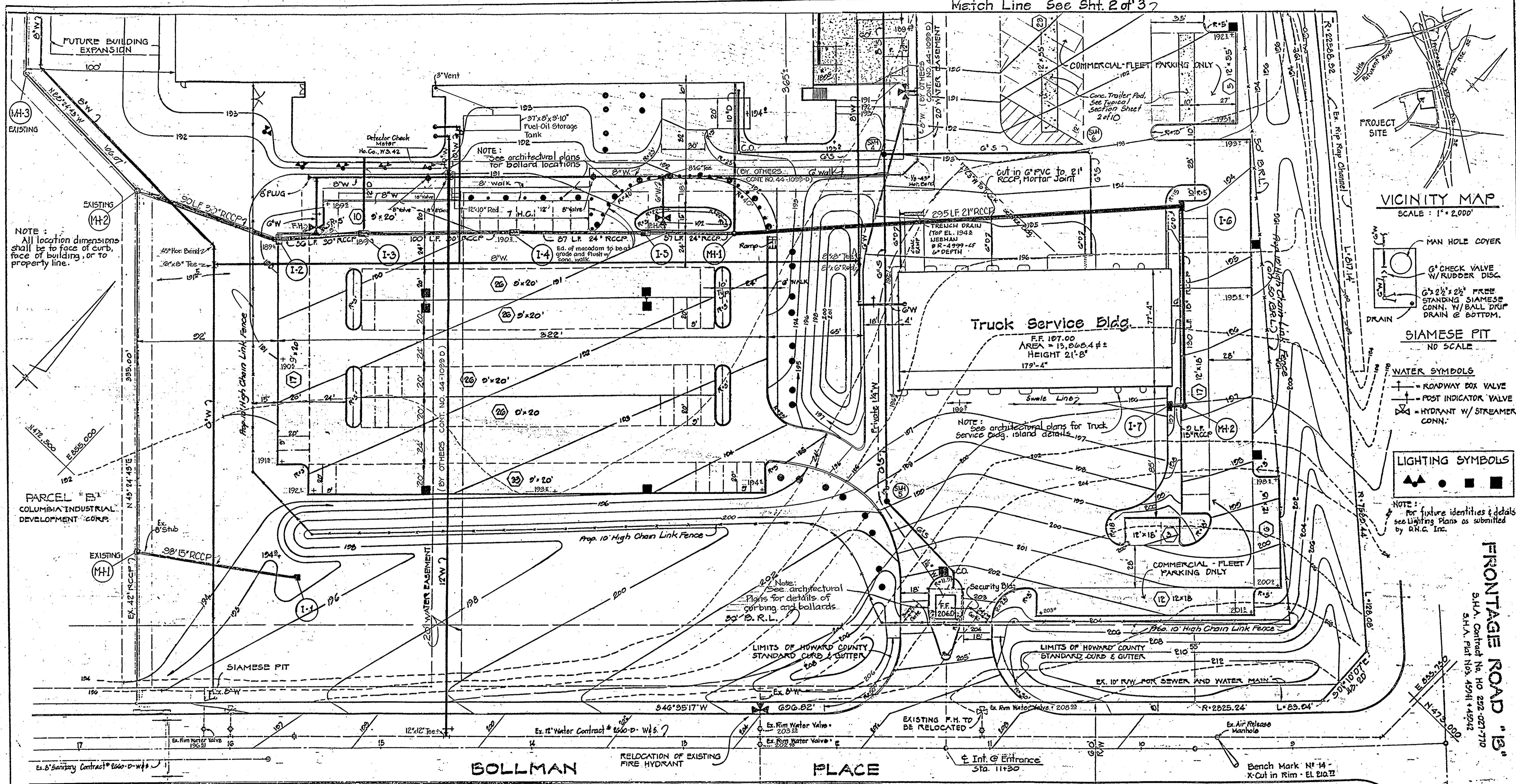
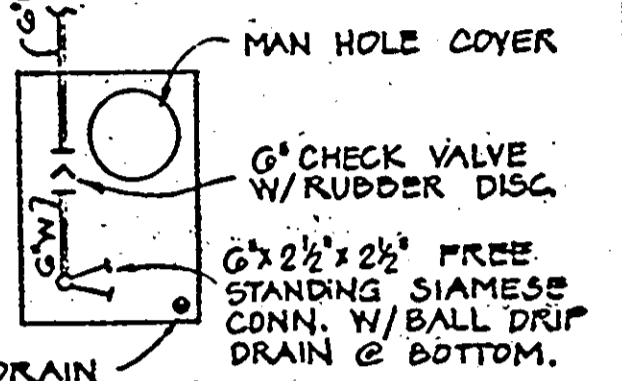


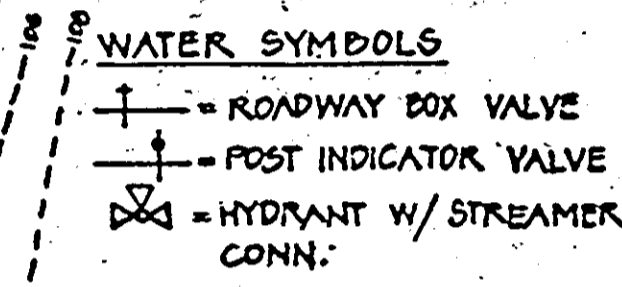
Match Line See Sht. 2 of 3



VICINITY MAP
SCALE: 1" = 2,000'



SIAMESE PIT
NO SCALE



LIGHTING SYMBOLS

NOTE: For fixture identities & details see Lighting Plans as submitted by R.H.C. Inc.

NOTE: All location dimensions shall be to face of curb, face of building, or to property line.

Truck Service Bldg.
F.F. 107.00
AREA = 13,868.4 sq ft
HEIGHT 21'-8"
179'-4"

NOTE: See architectural plans for Truck Service Bldg. island details.

NOTE: See architectural plans for details of curbing and bollards.
By B.R.L.

LIMITS OF HOWARD COUNTY STANDARD CURB & GUTTER

LIMITS OF HOWARD COUNTY STANDARD CURB & GUTTER

BOLLMAN PLACE

PLACE

FRONTAGE ROAD "B"
S.H.A. Contract No. HO 282-007-710
S.H.A. Plat No. 45911-45912

PARKING TABULATION

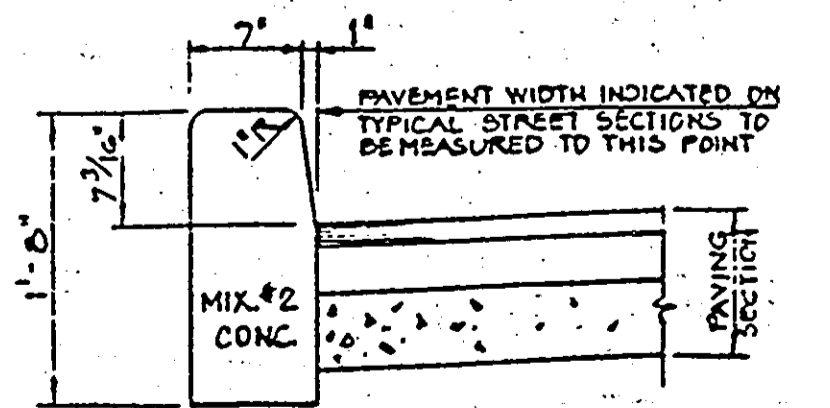
9' x 20' DRIVEWAY PARKING SPACES (AUTOMOBILES ONLY)	164
12' x 20' HANDICAPPED PARKING SPACES (AUTOMOBILES ONLY)	7
12' x 30' TRACTOR PARKING SPACES (COMMERCIAL VEHICLES ONLY)	41
12' x 35' TRUCK PARKING SPACES (COMMERCIAL VEHICLES ONLY)	22
12' x 55' TRACTOR/TRAILER PARKING SPACES (COMMERCIAL VEHICLES ONLY)	42
12' x 60' TRACTOR/TRAILER SHIPPING AND RECEIVING	25

SITE ANALYSIS

1. ZONING:	M-2
2. AREA:	17.89 ACRES
3. USAGE:	WAREHOUSE
4. PARKING REQUIREMENTS:	50 WAREHOUSE EMP. 25 SP., 50 OFFICE EMP. 25 SP., 10,893 SQ. FT. TRUCK SERV. BLDG. 42 SP. - TOTAL = 82 SP.
5. PARKING SPACES PROVIDED:	164 / HANDICAPPED SPACES - 7
6. BUILDING COVERAGE:	188,613 sq ft - 3.73 AC. - 21.55
7. MAXIMUM BUILDING COVERAGE PERMITTED:	50%
8. GREEN SPACE PROVIDED:	45.4%
9. PAVING AREA:	5.83 AC.

DEPOTES AUTOMOBILE PARKING AND TRAVELWAYS ONLY.
ALL OTHER PAVING SHALL BE HEAVY DUTY FOR TRUCK PARKING AND TRAVELWAYS. SEE DETAIL SHEET 2 OF 3

APPROVED
DIVISION OF LAND DEVELOPMENT &
ZONING ADMINISTRATION
HOWARD COUNTY, MARYLAND
DATE 3-30-84



STANDARD BARRIER CURB
NO SCALE

NOTE: ALL ON-SITE CURBING SHALL BE BARRIER TYPE UNLESS OTHERWISE NOTED ON PLAN.

APPROVED: HOWARD COUNTY OFFICE OF PLANNING AND ZONING
Planning Director: *Ronald Harris* 4-18-84
Date

APPROVED: FOR PUBLIC WATER, PUBLIC SEWERAGE, STORM DRAINAGE SYSTEMS AND ROADS.
HOWARD COUNTY DEPARTMENT OF PUBLIC WORKS.
Director: *Walter F. Neuman* 4-16-84
Date
Chief, Bureau of Engineering: *William D. Ryan* 4-13-84
Date

APPROVED: FOR PUBLIC WATER AND PUBLIC SEWERAGE SYSTEMS,
HOWARD COUNTY HEALTH DEPARTMENT.
County Health Officer: *Joseph Boyd* 4-17-84
Date

NOTE: REVISION TO SDP 82-66

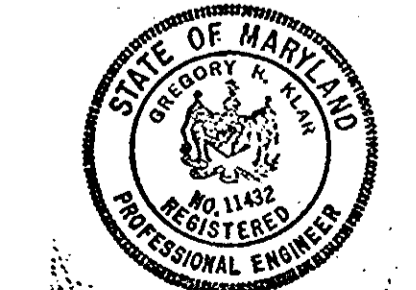
SUBDIVISION NAME	CORRIDOR INDUSTRIAL PARK
PLAT NO. OR L.P.	5069
BLOCK NO. (ZONE)	13
TAX/ZONE MAP	M-2
ELEC. DISTRICT	48
CENSUS TRACT	6TH
CELSUS TRACT	6064
WATER CODE	N/A
SEWER CODE	N/A
ADDRESS CHART	
LOT NUMBER	A
STREET ADDRESS	8704 BOLLMAN PLACE

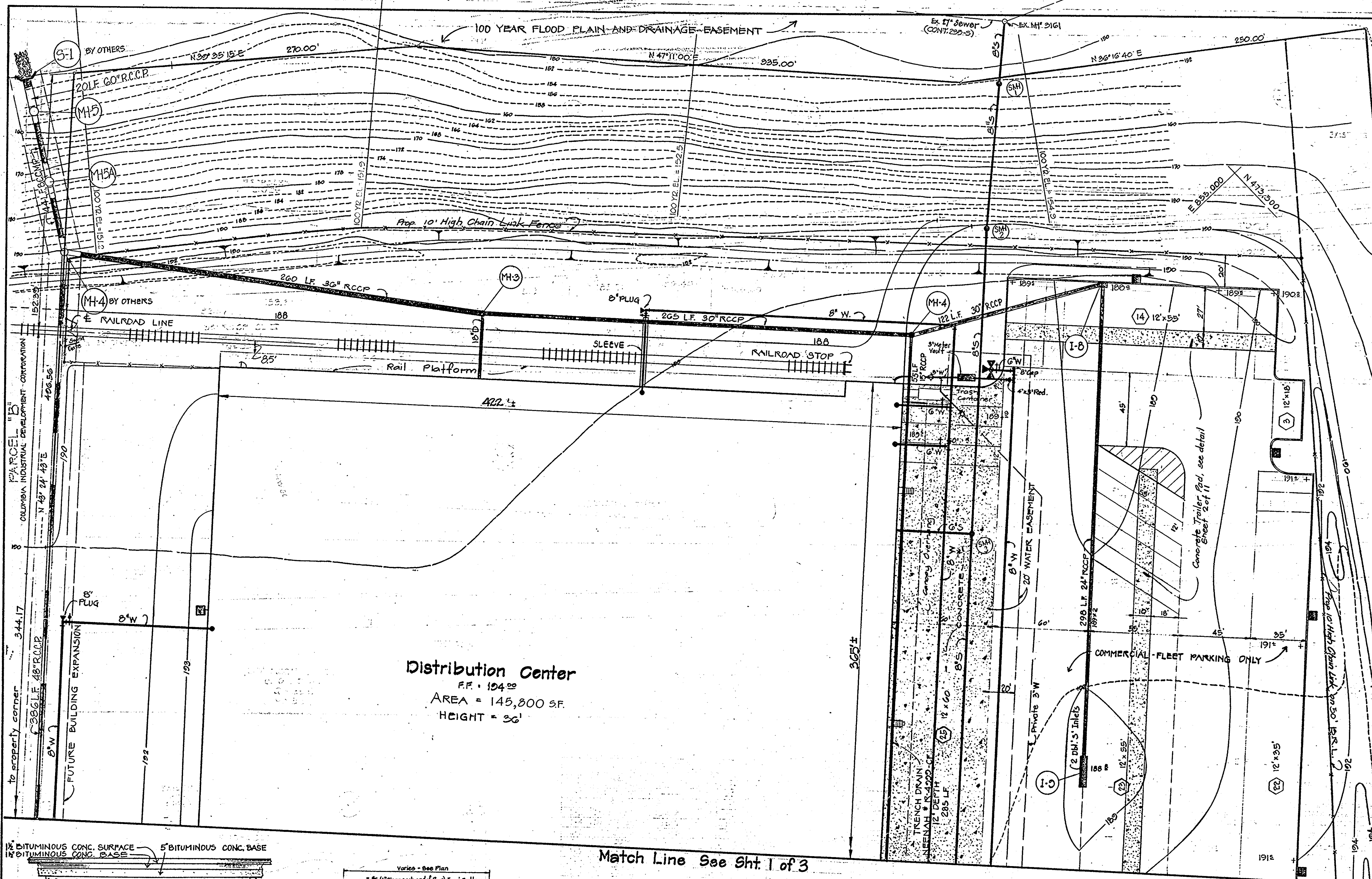
1/2/84	3	REVISED DISTRIBUTION CENTER BLDG.
4/10/83	2	ENLARGED TRUCK SERVICE BLDG.
12/31/81	1	HOWARD COUNTY COMMENTS, REVISIONS
DATE	NO.	DESCRIPTION

SITE DEVELOPMENT PLAN
MARRIOTT CORPORATION
FFK DISTRIBUTION CENTER

PARCEL 'A'
CORRIDOR INDUSTRIAL PARK
SECTION 2
6TH ELECTION DISTRICT
HOWARD COUNTY, MD

OWNER & DEVELOPER
MARRIOTT CORPORATION
MARRIOTT DRIVE
WASHINGTON, D.C. 20008
PREPARED BY
CENTURY ENGINEERING, INC.
22 WEST ROAD
TOYSON, MARYLAND 21284
SCALE: 1" = 50'

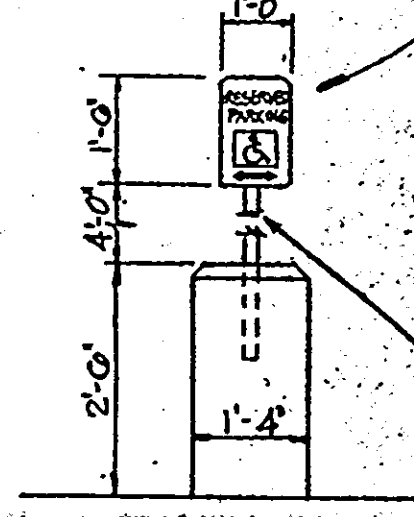




NOTE:
 1. HANDICAPPED PARKING SIGN SHALL CONFORM TO THE MARYLAND BUILDING CODE FOR THE HANDICAPPED, DETAIL R7-3.
 2. SIGNS MAY BE ORDERED FROM MID-MICHIGAN STAMP & SIGN, INC., P.O. BOX 2277, 400 LARCH STREET, LANSING, MICH. 48912, PHONE (517) 489-2455 - OR - LOCAL FIRM SPECIALIZING IN THIS TYPE OF SIGN.

APPROVED
 DIVISION OF LAND DEVELOPMENT &
 ZONING ADMINISTRATION
 HOWARD COUNTY, MARYLAND
 DATE 3-30-84
 [Signature]

1'-6" - 1'-0" x 16 GA. STEEL OR .080 ALUMINUM STANDARD "HANDICAPPED PARKING" SIGN W/IDENTIFICATION SYMBOL. BOLT TO STL. TUBE W/ 3/8" - CADMIUM PLATED BOLTS, NUTS AND WASHERS. SIGN TO READ "RESERVED PARKING".

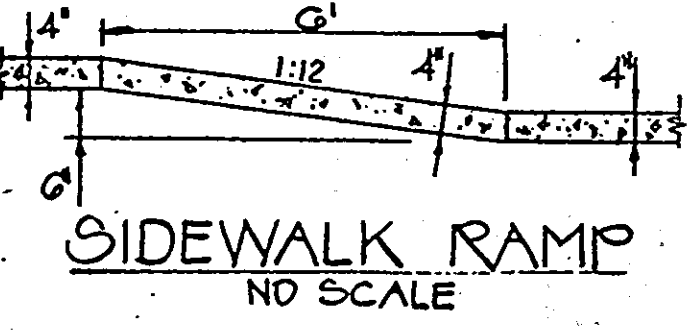
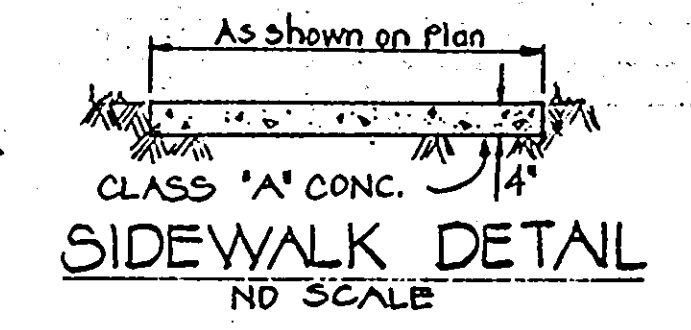
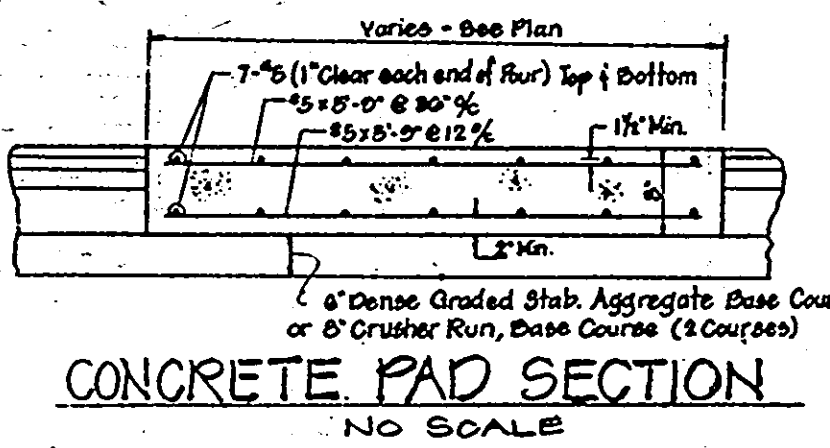
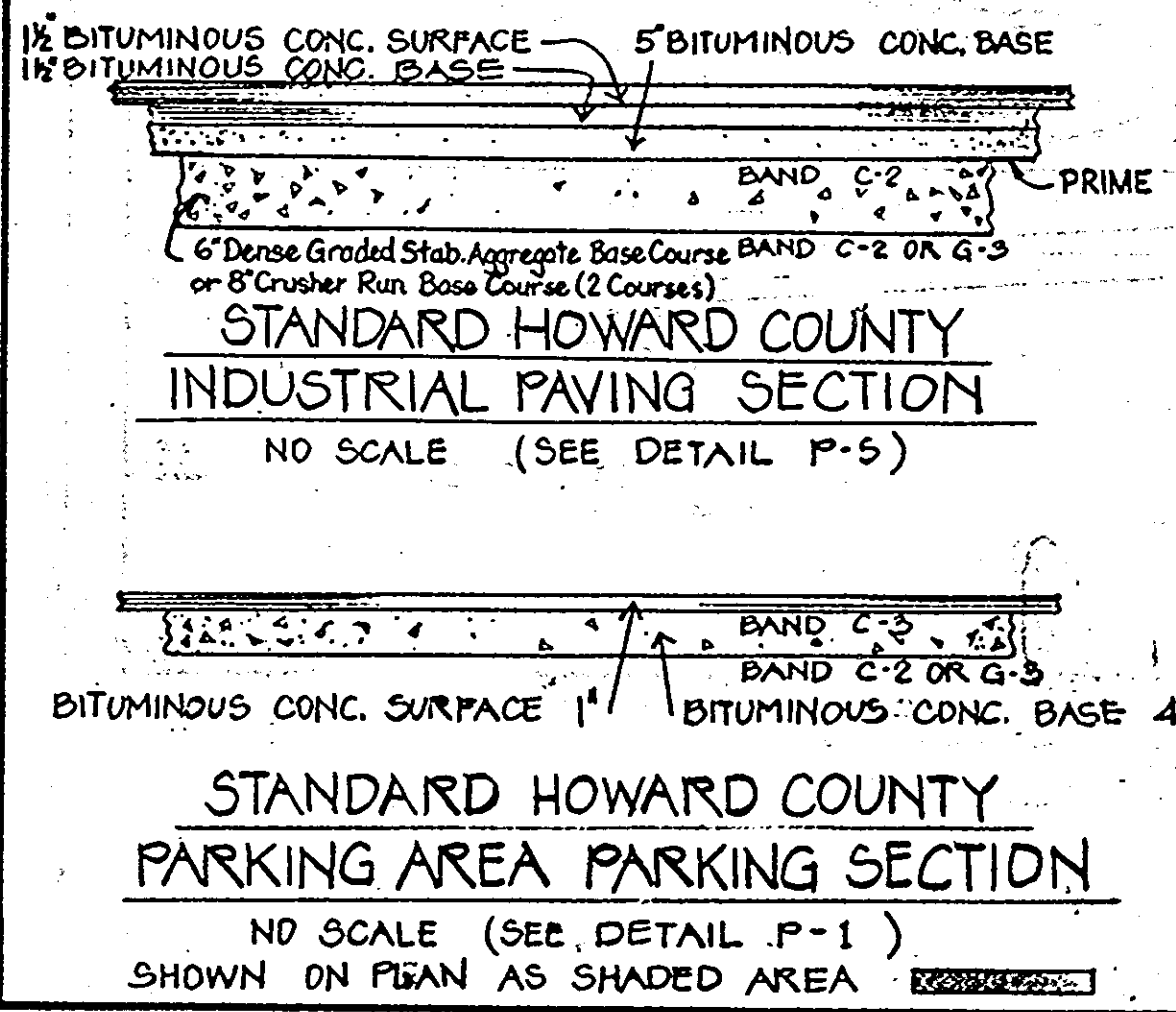


NOTE:
 2'-2" x 1.88 steel tube extended into conc. bollard 1'-0". Provide watertight cap.

HANDICAPPED PARKING SIGN
 SCALE: 1/8" = 1'-0"

Distribution Center
 F.F. = 104.00
 AREA = 145,800 SF.
 HEIGHT = 36'

Match Line See Sht. 1 of 3

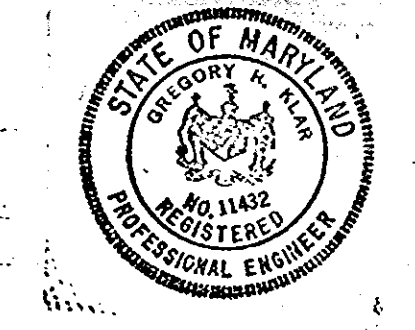


Clearing & Grading Article C-1
 Subgrade Article C-2
 Base Course Article C-21 or C-23
 Binder Course Article C-31
 Surface Course Article C-31

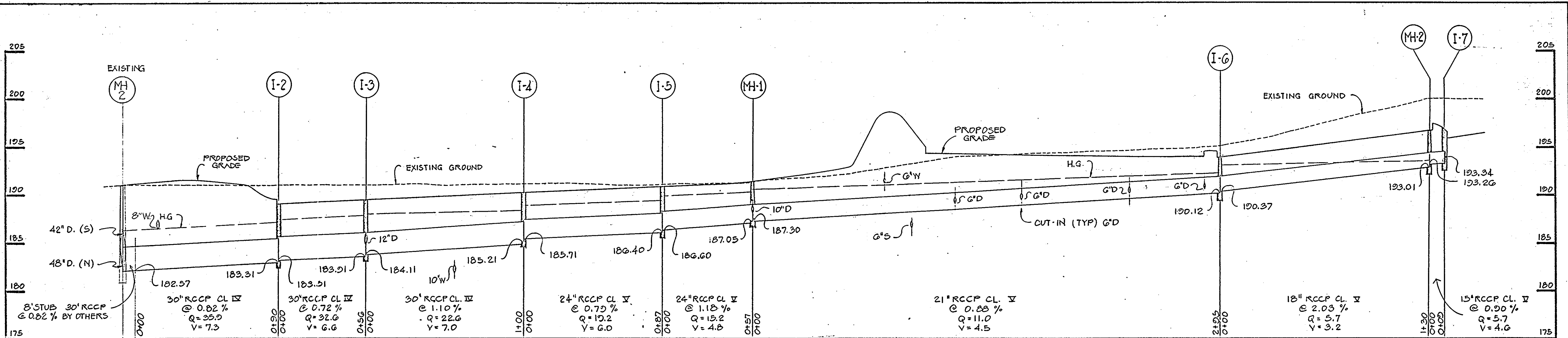
PLAN
 SCALE: 1" = 30'

APPROVED: HOWARD COUNTY OFFICE OF PLANNING AND ZONING.
 [Signature] 4-18-84
 Planning Director Date
 [Signature] 4-18-84
 Director Date
 APPROVED: FOR PUBLIC WATER AND PUBLIC SEWERAGE SYSTEMS,
 HOWARD COUNTY HEALTH DEPARTMENT.
 [Signature] 4-17-84
 County Health Officer Date

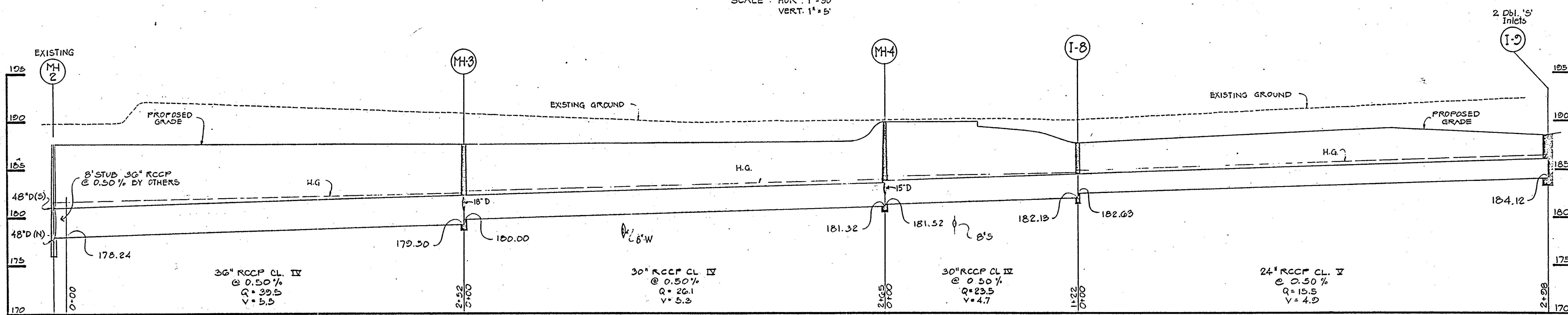
NOTE: REVISION TO SDP 82-66
 APPROVED: FOR PUBLIC WATER, PUBLIC SEWERAGE, STORM DRAINAGE SYSTEMS AND ROADS.
 HOWARD COUNTY DEPARTMENT OF PUBLIC WORKS.
 [Signature] 4-16-84
 Director Date
 [Signature] 4-13-84
 Chief, Bureau of Engineering Date



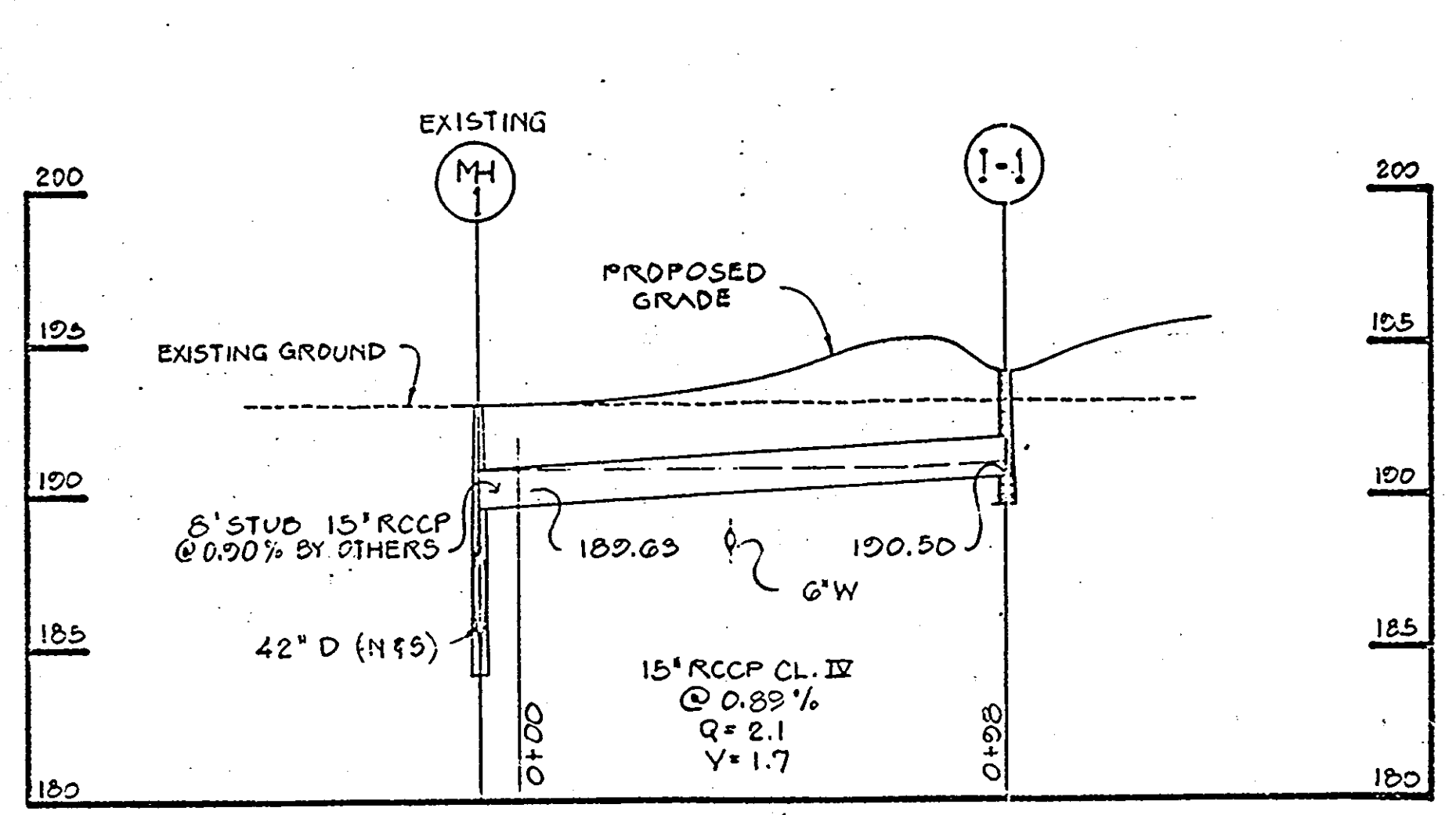
1/3/84 REVISED DISTRIBUTION CENTER BLDG.
 SITE DEVELOPMENT PLAN
 MARRIOTT CORPORATION
 FFK DISTRIBUTION CENTER
 PARCEL 'A'
 CORRIDOR INDUSTRIAL PARK
 SECTION 2
 6TH ELECTION DISTRICT HOWARD COUNTY, MD
 OWNER & DEVELOPER
 MARRIOTT CORPORATION
 WASHINGTON, D.C. 20008
 PREPARED BY
 CENTURY ENGINEERING, INC.
 22 WEST ROAD
 TOWSON, MARYLAND 21284
 SCALE: AS SHOWN



PROFILE
SCALE: HORZ. 1"=30'
VERT. 1"=5'



PROFILE
SCALE: HORZ. 1"=30'
VERT. 1"=5'



PROFILE
SCALE: HORZ. 1"=30'
VERT. 1"=5'

STRUCTURE SCHEDULE					
NO	TYPE	INV. IN	INV. OUT	TOP ELEV.	REMARKS
I-1	"K" GRATE	---	190.50	194.00	SD-4.15
I-2	"A-5"	183.51	185.51	180.00	SD-4.01 Sump
I-3	DN 12" GRATE	184.41	185.91	180.00	SD-4.25
I-4	DN 12" GRATE	185.71	185.51	190.20	---
I-5	"S" COMB.	186.60	186.60	191.50	SD-4.32 Depressed
I-6	"S" COMB.	190.37	190.12	194.50	SD-4.32 Sump
I-7	"A-5"	---	193.34	196.80	SD-4.01 Sump
I-8	DBL. 'S' COMB.	182.63	182.13	188.00	SD-4.34 Sump
I-9	12-DBL. 'S' GRATES	---	184.12	188.50	SD-4.23
M-1	MANHOLE	187.52	187.27	191.50	Type "B" G-5.05
M-2	MANHOLE	193.26	193.00	196.80	---
M-3	MANHOLE	180.00	179.50	187.80	G-5.02 or G-5.15
M-4	MANHOLE	181.92	181.32	190.10	G-5.02 or G-5.15

- GENERAL NOTES**
- THIS SITE IS NOT WITHIN 100 YEAR FLOOD PLAIN.
 - ALL HANDICAPPED PARKING SHALL BE CLEARLY MARKED AS FOLLOWS: "RESERVED FOR PHYSICALLY HANDICAPPED PERSONS".
 - ALL ROADWAYS AND PARKING AREAS ARE TO BE PRIVATELY OWNED AND MAINTAINED AND MARKED BY 4" WIDE PAINTED YELLOW STRIPES AS SHOWN ON PLAN.
 - PUBLIC WATER AND SEWER SHALL BE UTILIZED.
 - MATERIALS AND CONSTRUCTION SHALL BE IN ACCORDANCE WITH THE HOWARD COUNTY ROAD CONSTRUCTION CODE.
 - INSTALLATION OF ALL TRAFFIC CONTROL DEVICES SHALL BE IN ACCORDANCE WITH THE MANUAL OF UNIFORM TRAFFIC CONTROL DEVICES, 1971 REVISED EDITION.
 - CONTRACTOR OR DEVELOPER SHALL CONTACT THE CONSTRUCTION INSPECTION/SURVEY DIVISION, 24-HOURS IN ADVANCE OF COMMENCEMENT OF WORK, AT 992-2417 OR 992-2418.
 - FOR LIGHTING PLAN DETAILS, SEE ARCHITECTURAL PLANS.
 - STORM WATER MANAGEMENT FOR THIS SITE IS PROVIDED FOR BY THE STORM WATER MANAGEMENT FACILITY CONSTRUCTED IN SECTION ONE OF THE CORRIDOR INDUSTRIAL PARK.
 - CUT IN ROOF LEADERS TO 21" STORM DRAIN PIPE FROM TRUCK SERVICE BLDG.
 - CONTRACTOR SHALL TEST PIT EXISTING WATER AND SEWER LINES WITHIN 10' UTILITY EASEMENT PRIOR TO ROUGH GRADING SITE ENTRANCE.
 - CONTRACTOR SHALL MAINTAIN A MINIMUM OF 1 FT. CLEARANCE AT ALL WATER, SEWER AND STORM DRAIN CROSSINGS.
 - FOR LANDSCAPING PLAN, SEE SDP 82-66 SHEET NUMBERS 10 & 11 OF 11.

APPROVED
DIVISION OF LAND DEVELOPMENT &
ZONING ADMINISTRATION
HOWARD COUNTY, MARYLAND
DATE **3-30-84**

APPROVED: HOWARD COUNTY OFFICE OF PLANNING AND ZONING
James J. Harig 4-18-84
Planning Director Date

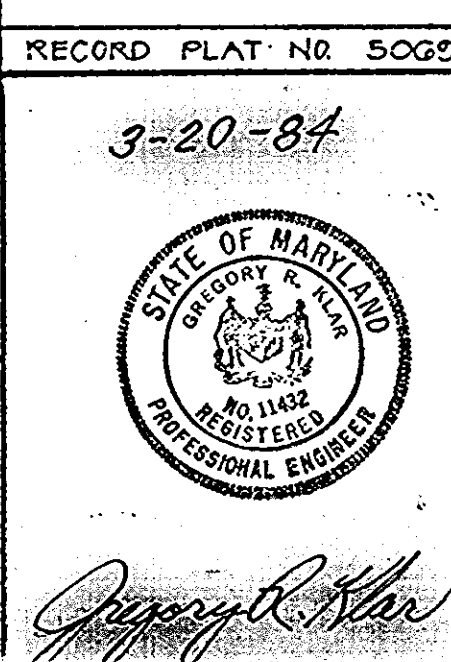
APPROVED: FOR PUBLIC WATER AND PUBLIC SEWERAGE
HOWARD COUNTY HEALTH DEPARTMENT.
James J. Harig 4-18-84
Director Date

APPROVED: FOR PUBLIC WATER, PUBLIC SEWERAGE, STORM DRAINAGE SYSTEMS AND ROADS.
HOWARD COUNTY DEPARTMENT OF PUBLIC WORKS.
James J. Harig 4-16-84
Director Date

APPROVED: FOR PUBLIC WATER AND PUBLIC SEWERAGE
HOWARD COUNTY DEPARTMENT OF PUBLIC WORKS.
James J. Harig 4-13-84
Chief, Bureau of Engineering Date

APPROVED: FOR PUBLIC WATER AND PUBLIC SEWERAGE
HOWARD COUNTY HEALTH DEPARTMENT.
James J. Harig 4-11-84
County Health Officer Date

NOTE: REVISION TO SDP 82-66



V/9/84 | REVISED PROFILES M-2 TO I-2 & M-1 TO I-1

STORM DRAIN PROFILES

MARRIOTT CORPORATION

FFK DISTRIBUTION CENTER

PARCEL 'A'
CORRIDOR INDUSTRIAL PARK
SECTION 2
6TH ELECTION DISTRICT HOWARD COUNTY, MD

OWNER & DEVELOPER
MARRIOTT CORPORATION
MARRIOTT DRIVE
WASHINGTON, D.C. 20058

PREPARED BY
CENTURY ENGINEERING, INC.
32 WEST ROAD
TOYSON, MARYLAND 21286

SCALE: AS SHOWN