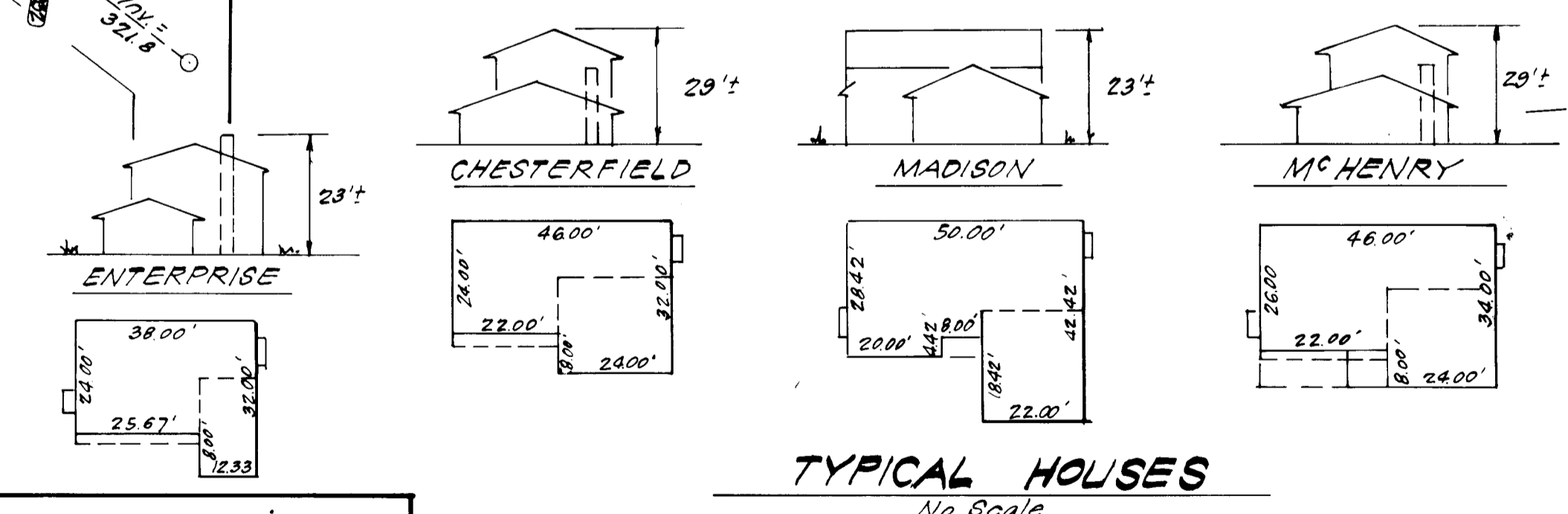


- GENERAL NOTES :**
- The Land included in this plan is zoned New Town (SFMD).
 - The Lots shown on this plan are covered by Final Development Plan Phase 178; A-III, Part II.
 - All coordinates shown hereon are based on Howard County Geodetic Control Traverse which is based upon the Maryland State Plane Coordinate System.
 - The total area included in this plan is 0.643 Acres.
 - All roadways are public and existing.
 - Any damage to county owned rights-of-way or paving shall be corrected at Developer's Expense.
 - Total number of Lots : 2
 - The contractor or developer shall contact the Construction Inspection/Survey Division, 24 hours in advance of commencement of work 792-7272.

ADDRESS CHART	
Lot No	Street Address
201	7458 First League
205	7442 " "



SURVEYOR'S CERTIFICATE

I hereby certify that the information contained hereon is the same as shown on previously approved S.D.P. 84-81c with the following exceptions:

- House Type and Grading has been revised on Lots 201 & 205.

I further certify that the Sediment and Erosion control measures, as previously approved, will not be affected, the grading is substantially the same as originally approved, the building setbacks comply with Howard County Zoning and Subdivision Regulations, and the lots have the same geometric configuration as shown on the respective recorded subdivision Plat.

Feb. 1, 1984
Date

Donald B. Sackett
Registered Land Surveyor
Md. No. 6059

APPROVED: FOR PUBLIC WATER AND PUBLIC SEWERAGE SYSTEMS.
HOWARD COUNTY HEALTH DEPARTMENT

3/9/84
DATE

APPROVED: HOWARD COUNTY OFFICE OF PLANNING AND ZONING

2-22-84
DATE

APPROVED: FOR PUBLIC WATER AND PUBLIC SEWERAGE, STORM DRAINAGE SYSTEMS AND PUBLIC ROADS
HOWARD COUNTY DEPARTMENT OF PUBLIC WORKS

3-7-84
DATE

APPROVED
DIVISION OF LAND DEVELOPMENT & ZONING ADMINISTRATION
HOWARD COUNTY MARYLAND
DATE 2-22-84

CLARK · FINEFROCK & SACKETT ENGINEERS · PLANNERS · SURVEYORS 11315 LOCKWOOD DRIVE • SILVER SPRING, MARYLAND 20904 • (301) 593-3400		
DESIGNED J.M.E.	REVISED SITE DEVELOPMENT PLAN LOTS 201 AND 205	SCALE 1"=30'
DRAWN V.L.B.	COLUMBIA	DRAWING 1 OF 1
CHECKED J.M.E.	VILLAGE OF KINGS CONTRIVANCE SECTION 2 AREA 3 6TH ELECTION DISTRICT HOWARD COUNTY, MARYLAND	JOB NO. 83-055
DATE 2-1-84	FOR: The Ryland Group, Inc. One Rholl North Drive, Suite 503 Columbia, Maryland 21045	FILE NO. 83-055-X