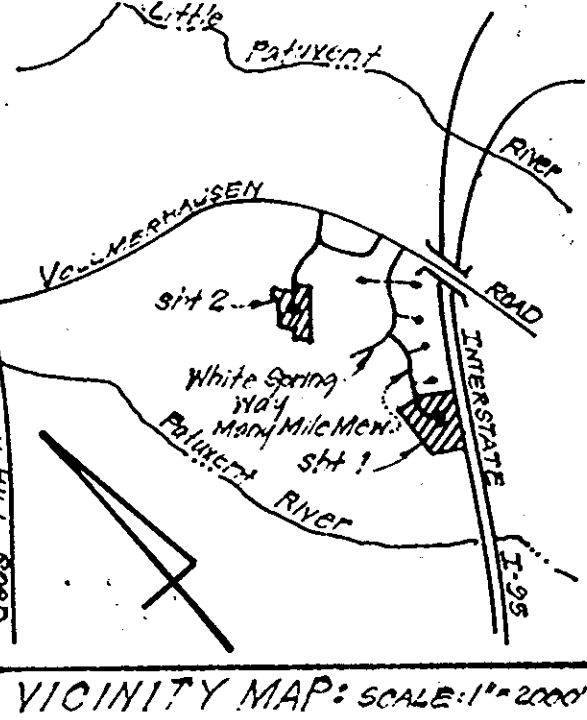


WALTER F. FRAZIER
168/502

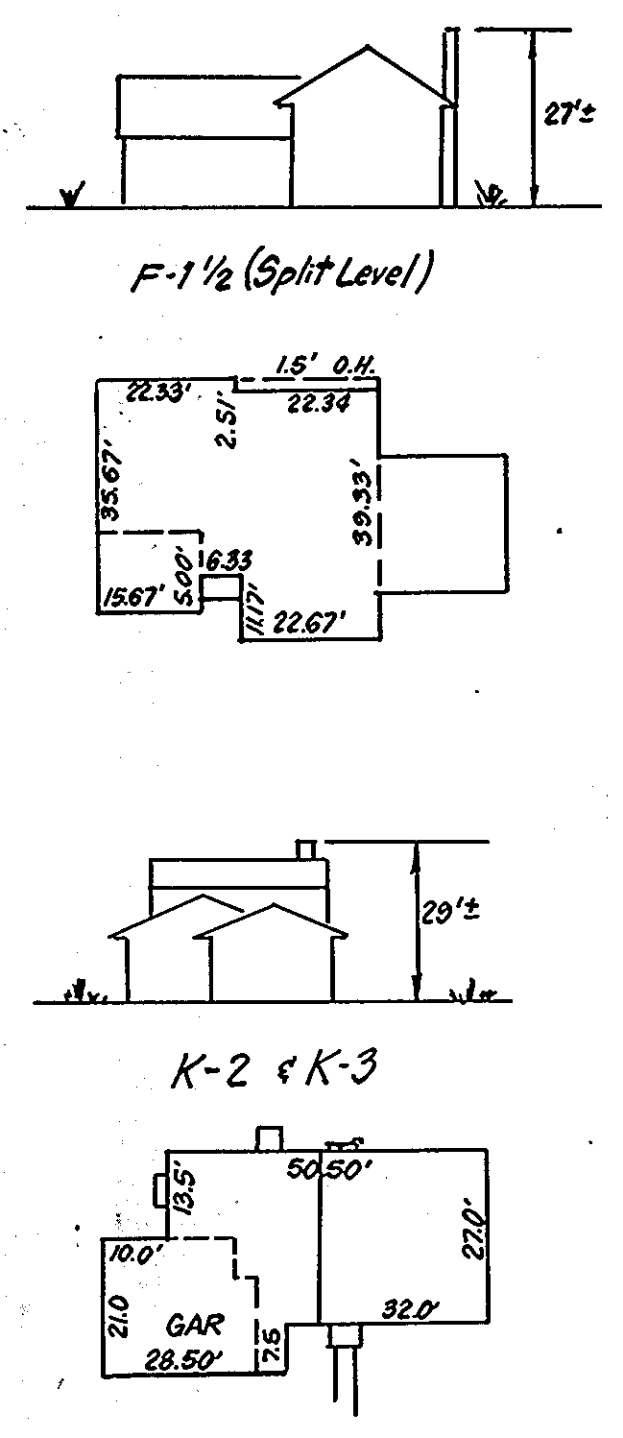
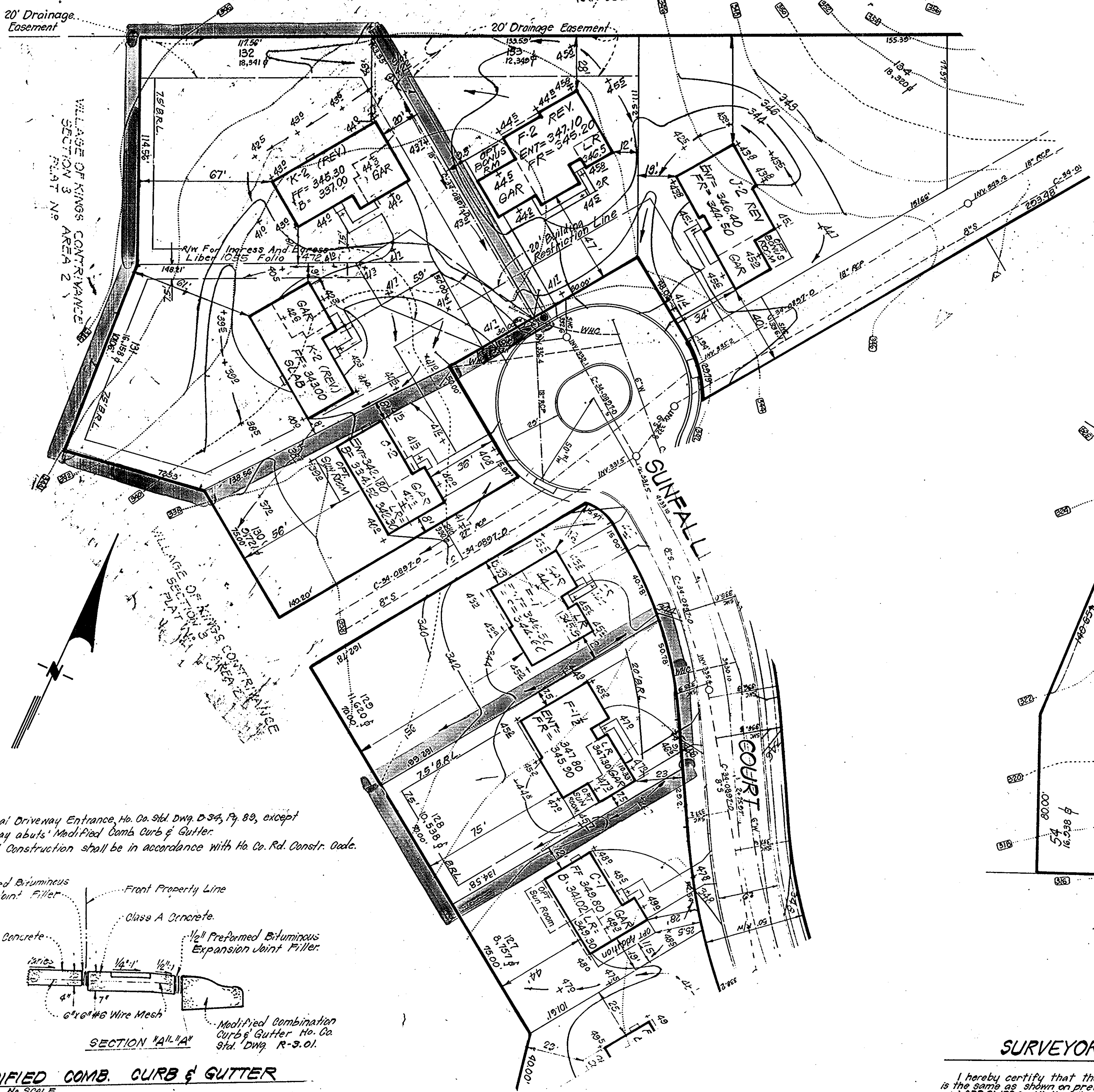
GENERAL NOTES

- The land included in this plan is zoned: New Town SFLD #3.R.M.D.
- The lots shown on this plan are covered by Final Development Plan Phase 169 - Part II.
- All Coordinates are based on traverse controls for Columbia established by Maps, Inc. in 1965 and by Purdum & Veselke in 1968, which controls were tied to Maryland Bureau of Control Survey monuments and U.S. Coast and Geodetic Survey monuments in the Columbia area.
- The area covered in this submission is located on Tax Map #42.
- The total area of this plan is 1.423 Acres
- All roadways are Public and Existing.
- Any damage to county owned rights of way to be corrected at the developers expense.
- Total Number of Lots: 4
- The contractor or developer shall contact the Construction Inspection Survey Division, 24 hours in advance of commencement of work at 702-7272.

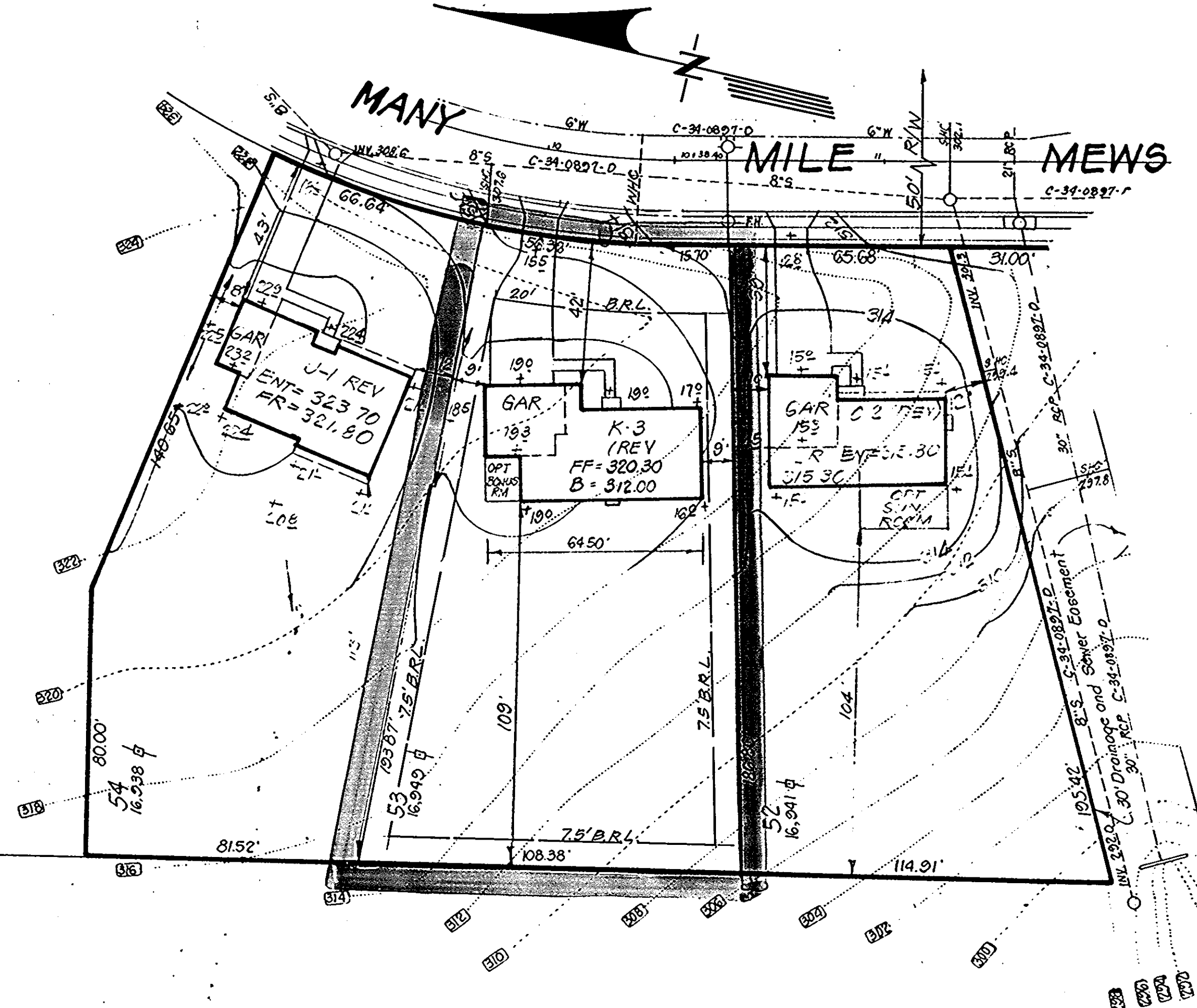


LEGEND:

- Contour Interval 2 FT.
- Existing Contour 370
- Proposed Contour 375
- Spot Elevation +705
- Direction of Drainage
- Existing Trees



TYPICAL HOUSES
NO SCALE



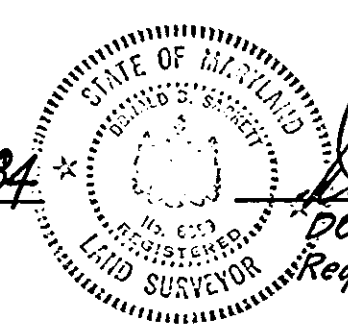
ADDRESS CHART	
Lot NR	Street Address
53	9558 Many Miles Mews
128	9413 Sunfall Court
131	9422 "
132	9433 "

SUBDIVISION NAME	SECT./AREA	LOT / PARCEL #
COLUMBIA VOKC	3/2	Lots 53, 128, 131, 132
PLAT # OF L.P.	BLOCK #	ZONE
463/4913 &	21	SEFLD
DATE	RECORD	TAX MAP #42
1/16/84	3-2-84	6TH
INDEX CODE	SEWER CODE	CENSUS TR.
E 15	G200000	6062

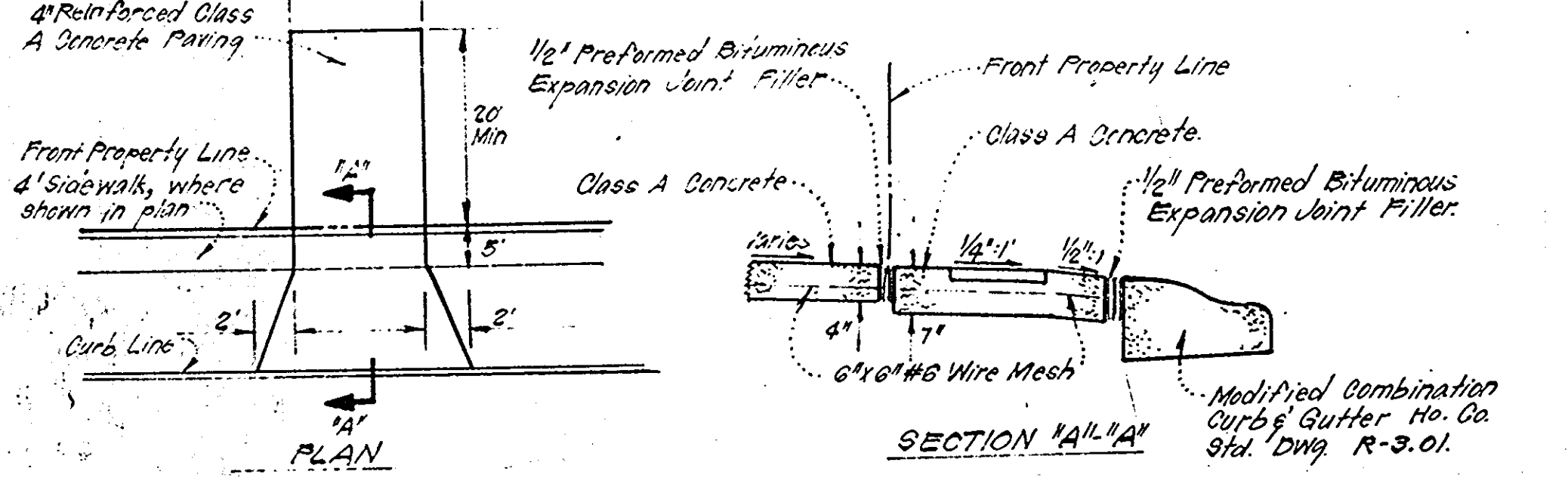
SURVEYOR'S CERTIFICATE

I hereby certify that the information contained hereon is the same as shown on previously approved SDR 81-167C and SDR 81-152C with the following exceptions:
 1. House Type and Grading has been revised on Lots 53, 128, 131, and 132.
 I further certify that the Sediment & Erosion control measures, as previously approved, will not be affected, the grading is substantially the same as originally approved, the building setbacks comply with Howard County Zoning and Subdivision Regulations, and the lots have the same geometric configuration as shown on the respective recorded subdivision Plat.

Jan. 16, 1984
 DATE
 DONALD B. SACKETT
 Registered Land Surveyor
 Md. No 6059



Note: Use Residential Driveway Entrance, Ho. Co. Std. Dwg. D-34, Pg. 89, except where driveway abuts Modified Comb Curb & Gutter.
 Note: Materials and Construction shall be in accordance with Ho. Co. Rd. Constr. Code.



DRIVEWAY ABUTTING MODIFIED COMB. CURB & GUTTER
NO SCALE

APPROVED FOR PUBLIC WATER AND PUBLIC SEWERAGE SYSTEMS,
 HOWARD COUNTY HEALTH DEPARTMENT
 J. M. Bond, Jr.
 COUNTY HEALTH OFFICER
 DATE 3/6/84

APPROVED - HOWARD COUNTY OFFICE OF PLANNING & ZONING
 Thomas J. Armstrong
 PLANNING DIRECTOR
 DATE 3-8-84

CHIEF DIVISION OF LAND DEVELOPMENT & ZONING ADMINISTRATION
 APPROVED FOR PUBLIC WATER AND PUBLIC SEWERAGE,
 STORM DRAINAGE SYSTEMS AND PUBLIC ROADS
 HOWARD COUNTY DEPARTMENT OF PUBLIC WORKS
 W. F. Nanna
 DIRECTOR
 DATE 3-2-84

W. J. ...
 CHIEF BUREAU OF ENGINEERING
 DATE 3-2-84

APPROVED
 DIVISION OF LAND DEVELOPMENT &
 ZONING ADMINISTRATION
 HOWARD COUNTY, MARYLAND
 DATE 2-10-84
 W. J. ...

CLARK • FINEFROCK & SACKETT
 ENGINEERS • PLANNERS • SURVEYORS
 11315 LOKWOOD DRIVE SILVER SPRING, MARYLAND 20904 (301) 593 3400

DESIGNED J.M.E.	SITE DEVELOPMENT PLAN LOTS 53, 128, 131 and 132 COLUMBIA VILLAGE OF KINGS CONTRIVANCE SECTION 3 AREA 2 6TH ELECTION DISTRICT HOWARD COUNTY, MARYLAND	SCALE 1" = 30'
DRAWN K.M.H. D.B.R.		DRAWING 10F1
CHECKED J.M.E.	FOR: COLUMBIA BUILDERS INC 3 Lakefront North, Suite 200 Columbia, Md 21044	JOB NO. 80-100
DATE 1-13-83	SDP 84-172 C	FILE NO. 80-100x