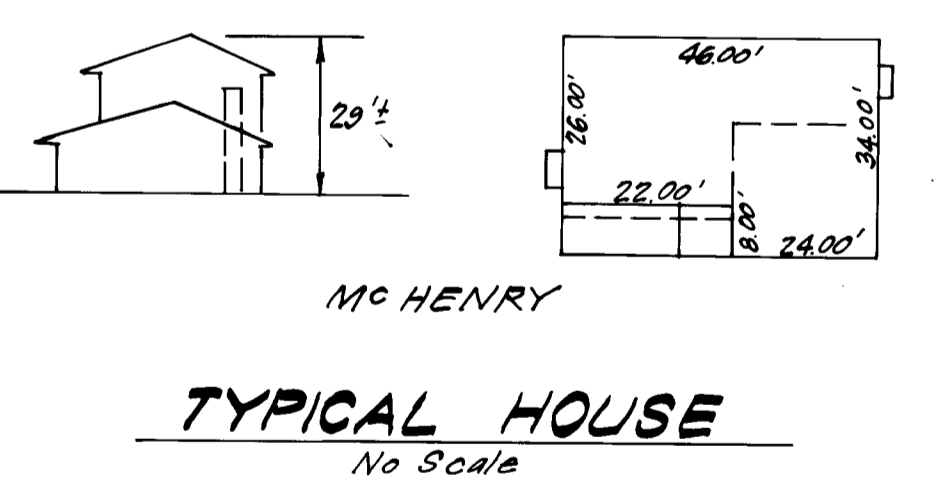


- GENERAL NOTES:**
- The Land included in this plan is zoned New Town (SFMD).
 - The Lots shown on this plan are covered by Final Development Plan Phase 178, A-III, Part II.
 - All coordinates shown hereon are based on Howard County Geodetic Control Traverse which is based upon the Maryland State Plane Coordinate System.
 - The total area included in this plan is 0.3435 Acres.
 - All roadways are public and existing.
 - Any damage to county owned rights-of-way or paving shall be corrected at Developer's Expense.
 - Total number of Lots: 1.

ADDRESS CHART	
LOT	ADDRESS
202	7454 First League

- LEGEND:**
- Contour Interval 2 ft.
 - Existing Contour
 - Proposed Contour 3.50
 - Spot Elevation +50.5
 - Direction of Drainage
 - Walkout Basement
 - Trees to be Retained



SURVEYOR'S CERTIFICATE

I hereby certify that the information contained hereon is the same as shown on previously approved SDP 84-110-C, with the following exceptions:

1. House Type and Grading has been revised on Lot 202.

I further certify that the Sediment & Erosion control measures, as previously approved, will not be affected, the grading is substantially the same as originally approved, the building setbacks comply with Howard County Zoning and Subdivision Regulations, and the lot has the same geometric configuration as shown in the respective recorded subdivision Plats.

Jan. 17, 1984 Date
 Donald B. Sackett
 DONALD B. SACKETT
 Registered Land Surveyor
 Md. No. 6059

APPROVED: FOR PUBLIC WATER AND PUBLIC SEWERAGE SYSTEMS.
 HOWARD COUNTY HEALTH DEPARTMENT

3/6/84 DATE

APPROVED: HOWARD COUNTY OFFICE OF PLANNING & ZONING
 3-8-84 DATE

APPROVED: FOR PUBLIC WATER AND PUBLIC SEWERAGE.
 STORM DRAINAGE SYSTEMS AND PUBLIC ROADS
 HOWARD COUNTY DEPARTMENT OF PUBLIC WORKS

3-2-84 DATE

3-1-84 DATE

APPROVED
 DIVISION OF LAND DEVELOPMENT &
 ZONING ADMINISTRATION
 HOWARD COUNTY, MARYLAND
 DATE: 2-9-84

SUBDIVISION NAME COLUMBIA - VOKC		SECT. AREA 213	LOT NUMBER 202
PLANNING DISTRICT 4935	ZONE SFMD	TAXING MAP/ELEC. DIST. 41	CENSUS TR. 6TH 6062
WATER CODE E 16	SEWER CODE C-34-0929-D		

CLARK · FINEFROCK & SACKETT
 ENGINEERS · PLANNERS · SURVEYORS
 11315 LOCKWOOD DRIVE · SILVER SPRING, MARYLAND 20904 · (301) 593-3400

DESIGNED J.M.E.	REVISED SITE DEVELOPMENT PLAN LOT 202	SCALE 1"=30'
DRAWN V.L.B.	COLUMBIA	DRAWING 1 OF 1
CHECKED J.M.E.	VILLAGE OF KINGS CONTRIVANCE SECTION 2 6TH ELECTION DISTRICT HOWARD COUNTY, MARYLAND	JOB NO. 83-055
DATE 1-17-84	FOR: The Ryland Group, Inc. One Kroll North Drive, Suite 503 Columbia, Maryland 21045	FILE NO. 83-055-X

NOTE: Public Water & Sewer shown for Reference Only. For more detailed information See Water & Sewer plans Contract No. C-34-0929-D and Contract No. C-34-1112-D.