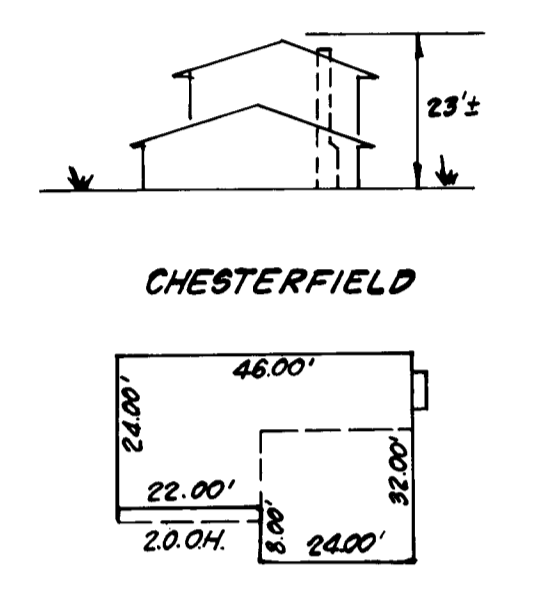
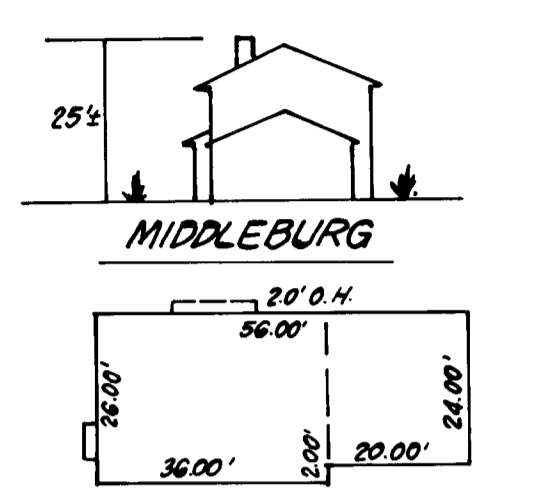
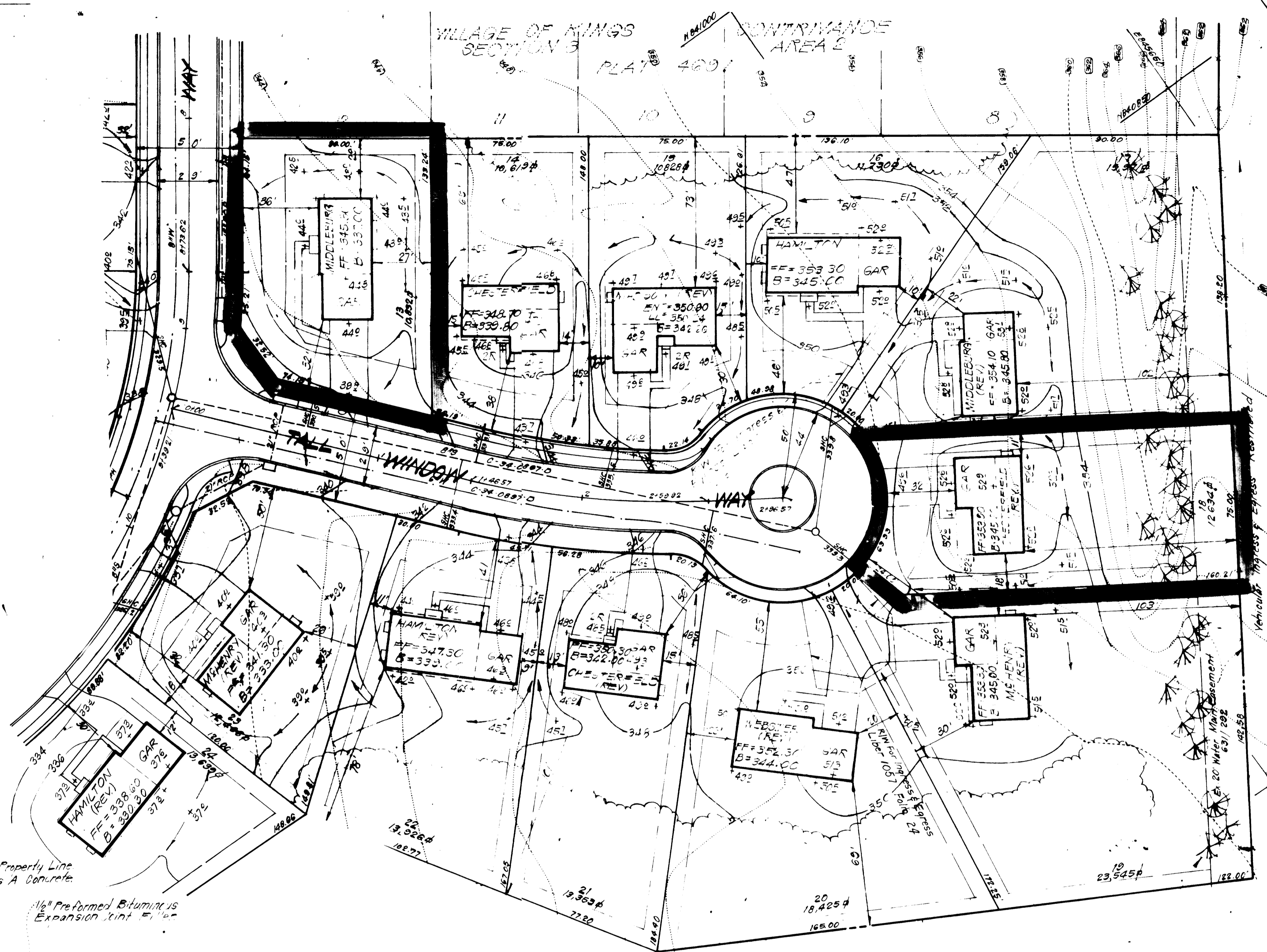


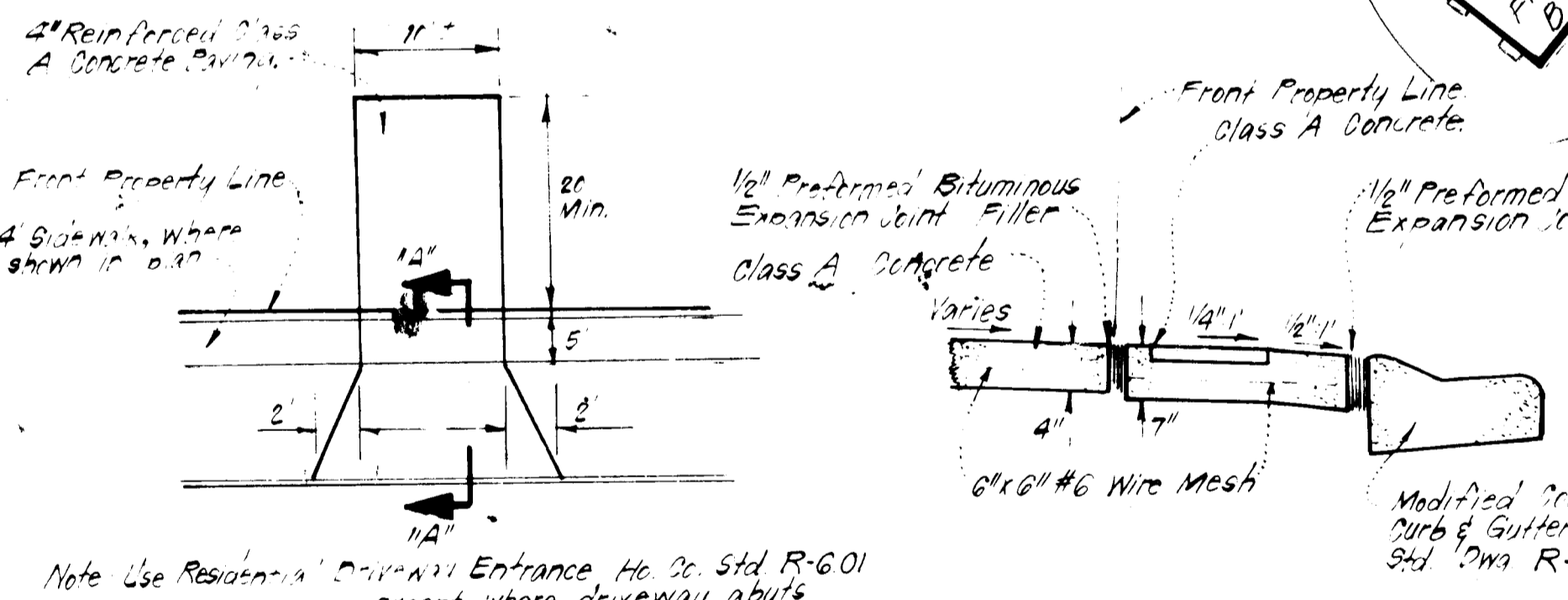
- LEGEND:**
- 1. Contour Interval 2 Ft.
 - 2. Existing Contour
 - 3. Proposed Contour
 - 4. Spot Elevation
 - 5. Direction of Drainage
 - 6. Exist Trees to be retained
 - 7. Walk Out Basement
 - 8. Retaining Wall

GENERAL NOTES:

1. The land included in this plan is zoned: New Town (SFMD)
2. The lots shown on this plan are covered by Final Development Plan Phase 169, Part 2
3. All coordinates are based on traverse controls for Columbia established by Maps Inc. in 1965 by Purdum & Veschke, in 1968 which controls were tied to Maryland Bureau of Control Survey monuments and U.S. Coast & Geodetic Survey monuments in the Columbia area.
4. The area covered in this submission is located on Tax Map #42.
5. The total area included on this plan is 0.539 Acres.
6. All roadways are public and existing.
7. Any damage to county owned rights of way shall be corrected at the developer's expense.
8. Total Number of Lots: 2.



TYPICAL HOUSES
NO SCALE



Note: Materials and construction shall be in accordance with H.C. Std. Specifications & details for Construction SECTION "A"-"A"

PLAN
HO. CO. STD. R-603
DRIVEWAY ABUTTING MODIFIED COMB CURB & GUTTER
NO SCALE

ADDRESS CHART	
Lot No	Street Address
13	2401 Tall Window Way
18	9421 " " "

SUBDIVISION NAME	COLUMBIA VOKC	SECT./AREA	3 / 2	LOT / PARCEL #	Lots 13 & 18
PLAN # or L/P	4691	BLOCK #	22	TAX / ZONE MAP	4691, 674
ZONE	SFMD	ELEC. DIST.		CENSUS TR.	6062
WATER CODE	E 15	SEWER CODE			620000

SURVEYOR'S CERTIFICATE

I hereby certify that the information contained hereon is the same as shown on previously approved 32P 81-131c with the following exceptions:
 1. House Type and grading has been revised on Lots 13 & 18.
 I further certify that the Sediment and Erosion control measures, as previously approved, will not be affected, the grading is substantially the same as previously approved, the building setbacks comply with Howard County Zoning and Subdivision Regulations, and the lots have the same geometric configuration as shown on the respective recorded subdivision Plat.

Jan 6, 1984
 Date
 Donald B. Sackett
 Registered Land Surveyor
 Md. No. 6055

APPROVED FOR PUBLIC WATER AND PUBLIC SEWERAGE SYSTEMS, HOWARD COUNTY HEALTH DEPARTMENT
 DATE 2-14-84
 APPROVED HOWARD COUNTY OFFICE OF PLANNING & ZONING
 DATE 2-15-84
 APPROVED FOR PUBLIC WATER AND PUBLIC SEWERAGE, STORM DRAINAGE SYSTEMS AND PUBLIC ROADS, HOWARD COUNTY DEPARTMENT OF PUBLIC WORKS
 DATE 2-9-84
 CHIEF BUREAU OF ENGINEERING
 DATE 2-2-84

APPROVED
 DIVISION OF LAND DEVELOPMENT & ZONING ADMINISTRATION
 HOWARD COUNTY, MARYLAND
 DATE 1-27-84

CLARK • FINECROCK & SACKETT
 ENGINEERS • PLANNERS • SURVEYORS
 1315 LOCKWOOD DRIVE SILVER SPRING, MARYLAND 20904 (301) 593-3400

DESIGNED	J.M.E.	REVISOR	J.M.E.	SCALE	1/2" = 1'
DRAWN	R.W.	CHECKED	J.M.E.	DRAWING	1001
DATE	7-6-83			JOB NO.	80-111
				FILE NO.	86-111-X

REVISED SITE DEVELOPMENT PLAN
 LOTS 13 & 18
COLUMBIA
 VILLAGE OF KINGS CONTRIVANCE
 SECTION 3 AREA 2
 8TH ELECTION DISTRICT
 HOWARD COUNTY, MARYLAND
 The Ryland Group, Inc.
 1 Knoll North Drive Suite 503
 Columbia, Md. 21049