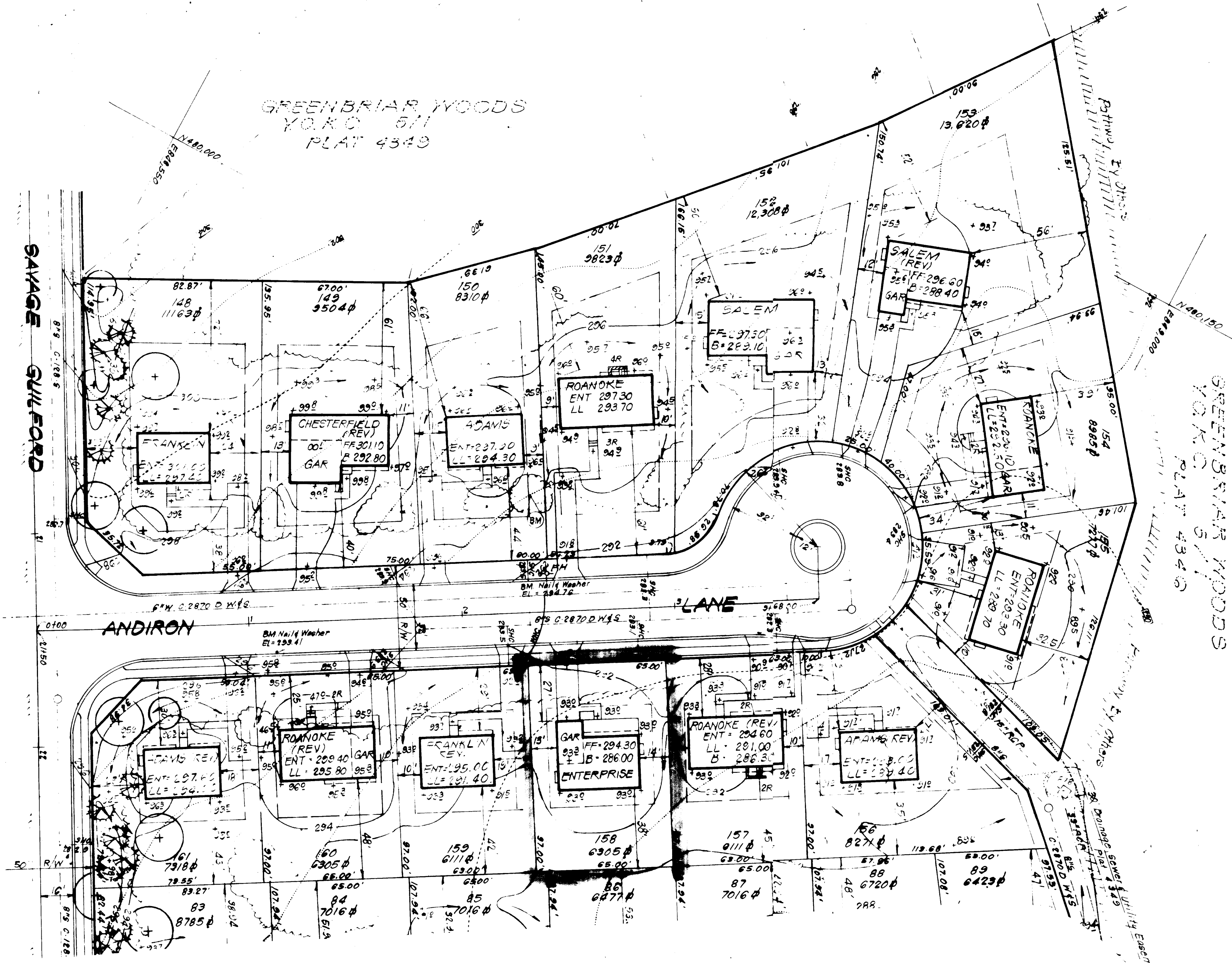
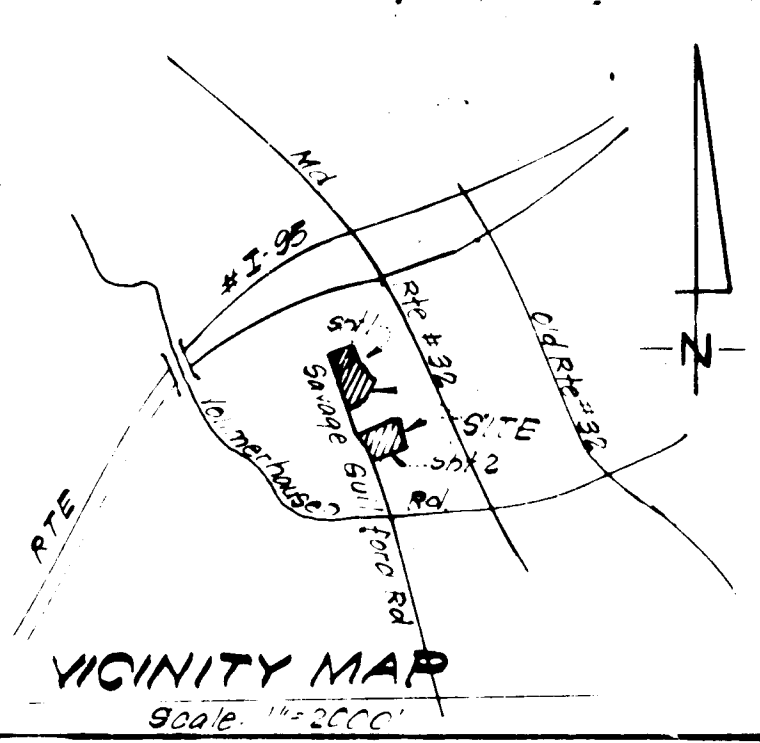


**LEGEND:**

- 1 Contour Interval 2 FT
- 2 Existing Contour 800
- 3 Proposed Contour 900
- 4 Spot Elevation 100
- 5 Direction of Drainage
- 6 Existing Trees to be retained

Major Deciduous Tree (oak, maple) 2 1/2" Cal. 12-14 ft.  
 Intermediate Flowering Tree 2-2 1/2" Cal. 8-10 ft.  
 Evergreen Trees (pines, spruce) 2-2 1/2" Cal. 6-8 ft.



**GENERAL NOTES:**

1. The Land included in this plan is zoned R.S.C.
2. The Lots shown on this plan are covered by Final Development Plan Phase 174 for New Town & R.S.C.
3. All coordinates are based on traverse control for Columbia established by Maps Inc. in 1966 by Pyramid & Paschke in 1968, which controls were tied to Maryland Bureau of Control Survey monuments and to U.S. Coast & Geodetic Survey monuments in the Columbia area.
4. The area covered in this submission is located on Tax Map # 42.
5. The total area included on this plan is 0.1447 Acres.
6. All roadways are public & existing.
7. Any damage to county owned rights of way shall be corrected at the developer's expense.

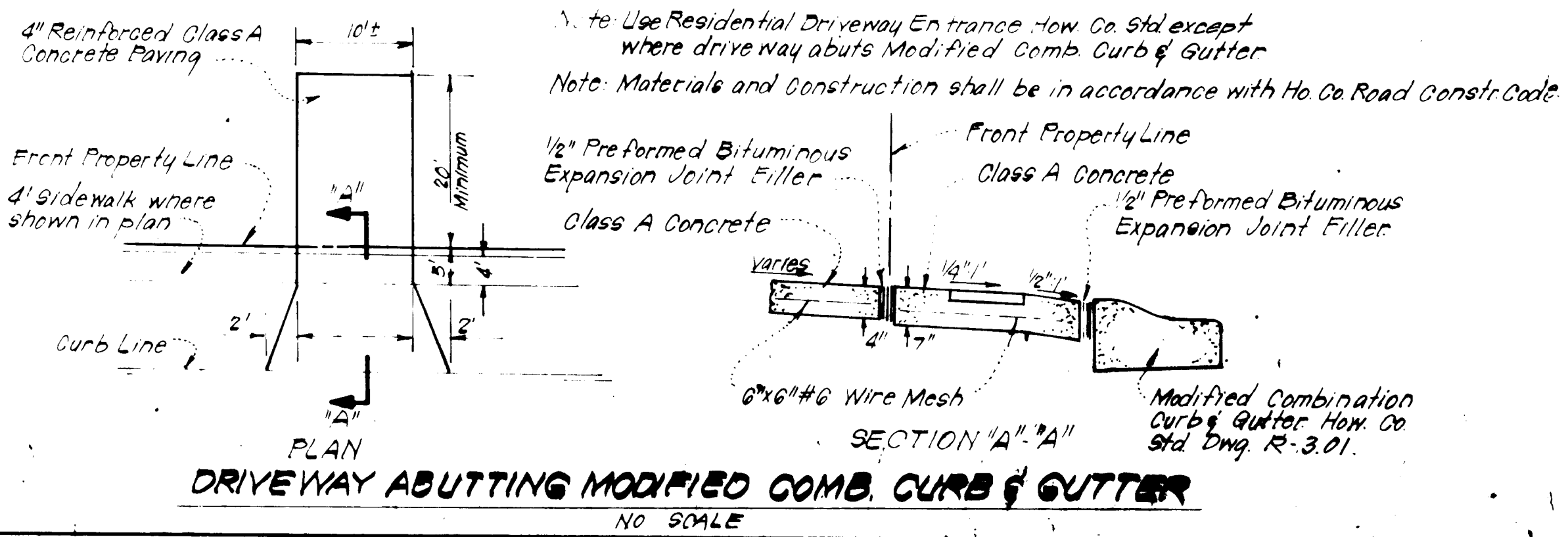
ADDRESS CHART	
LOT #	STREET ADDRESS
158	8046 Andiron Way

**APPROVED**  
 DIVISION OF LAND DEVELOPMENT &  
 ZONING ADMINISTRATION  
 HOWARD COUNTY, MARYLAND  
 DATE **1-4-84**

APPROVED FOR PUBLIC WATER AND PUBLIC SEWERAGE SYSTEMS,  
 HOWARD COUNTY HEALTH DEPARTMENT  
 DATE **1-19-84**

APPROVED HOWARD COUNTY OFFICE OF PLANNING & ZONING  
 DATE **1-20-84**

APPROVED FOR PUBLIC WATER AND PUBLIC SEWERAGE,  
 STORM DRAINAGE SYSTEMS, AND PUBLIC ROADS  
 HOWARD COUNTY DEPARTMENT OF PUBLIC WORKS  
 DATE **1-17-84**



**SURVEYOR'S CERTIFICATE**

I hereby certify that the information contained hereon is the same as shown in previously approved SDP 84-74, with the following exceptions:

1. House Type and Grading has been revised on Lot 158.

I further certify that the Sediment & Erosion control measures as previously approved, will not be affected, the grading is substantially the same as originally approved, the building setbacks comply with Howard County Zoning and Subdivision Regulations, and the lot has the same geometric configuration as shown on the respective recorded subdivision plans.

Dec. 7, 1983  
 Date

*Donald B. Sackett*  
 Registered Land Surveyor  
 No. 9058

SUBDIVISION NAME	Greenbriar Woods	V.K.C.	5/1	158
PLAT/ROLL/BLK/ZONE	4349/5/R.S.C.	47	6TH	6064
WATER CODE	E 14	SEWER CODE	5091500	

**CLARK • FINEPROCK & SACKETT**  
 ENGINEERS • PLANNERS • SURVEYORS  
 11315 LOCKWOOD DRIVE SILVER SPRING MARYLAND 20904 301-593-1400

DESIGNED: J.M.E.  
 DRAWN: V.L.B., K.T.W.  
 CHECKED: J.M.E.  
 DATE: Dec, 1983

**REVISED SITE DEVELOPMENT PLAN**  
 LOT 158

**GREENBRIAR WOODS**  
 VILLAGE OF KINGS CONTRIVANCE  
 SECTION 5 AREA 1  
 6TH ELECTION DISTRICT  
 HOWARD COUNTY, MARYLAND

FOR THE RYLAND GROUPING (Col. Division)  
 One Knoll North Dr. Suite 509  
 Columbia, Md. 21045

SCALE: 1/4" = 30'  
 DRAWING: 1 of 1  
 JOB NO.: 79-093  
 FILE NO.: 79-093-X