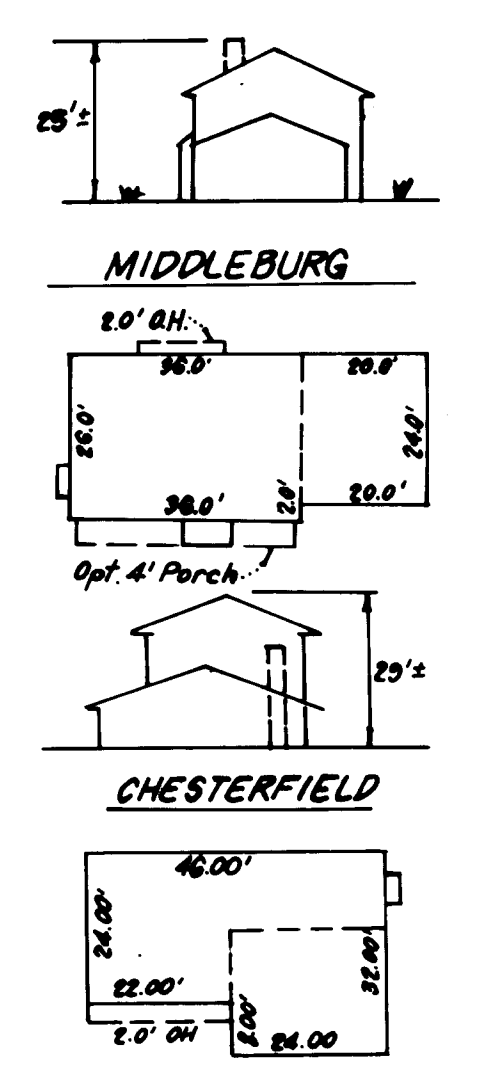


TYPICAL HOUSES



LEGEND:

- 1 Contour Interval 2 Ft.
- 2 Existing Contour -550-
- 3 Proposed Contour -550-
- 4 Spot Elevation -505
- 5 Direction of Drainage
- 6 100 Yr. Flood Plain Elevation EL+920.3'
- 7 Exist. Trees to be retained
- 8 Walk-Out Basement
- 9 Retaining Wall

GENERAL NOTES

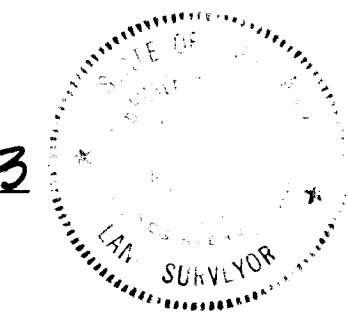
1. The Land included in this plan is zoned: R-20
2. The Lots shown on this plan are covered by Final Development Plan Phase
3. All coordinates are based on traverse controls for Columbia established by Maps Inc. in 1968 by Purdum & Jeschke in 1968, which controls were tied to Maryland Bureau of Control Survey monuments and to U.S. Coast & Geodetic Survey monuments in the Columbia area.
4. The area shown in this submission is located on Tax Map # 24
5. The total area included on this plan is 0.689 Acres
6. All roadways are public & existing.
7. Any damage to county owned rights of way shall be corrected at the developer's expense.

ADDRESS CHART	
LOT NUMBER	STREET ADDRESS
89	4284 RED BANDANA WAY
100	4272 COATTAIL COURT

SURVEYOR'S CERTIFICATE

I hereby certify that the information contained hereon is the same as shown on previously approved SDP 80-83, with the following exceptions:
 1. House Type and Grading has been revised on Lots 89 & 100.
 I further certify that the Sediment and Erosion control measures, as previously approved, will not be affected, the grading is substantially the same as originally approved. The building setbacks comply with Howard County Zoning and Subdivision Regulations and the lots have the same geometric configuration as shown on the respective recorded subdivision Plat.

Dec. 7, 1983
DATE



Donald B. Sackett
DONALD B. SACKETT
Registered Surveyor
Md. No. 8059

SUBDIVISION NAME		SECT./AREA	LOTS
DORSEY HALL		1	89 & 100
PLAT #	BLOCK #	ZONE	TAXI ZONE MAP ELEC. DIST. DEMONSTR.
4484	22	R-20	24 2ND 8023.01
WATER CODE		SEWER CODE	
F11		5751900	

CLARK • FINEPROCK & SACKETT
ENGINEERS • PLANNERS • SURVEYORS
11315 LOCKWOOD DR. VE SILVER SPRING, MARYLAND 20904 101-593-1400

DESIGNED: J.M.E. SCALE: 1/8"=1'-0"
 DRAWN: K.I.W. DRAWING: 104-1
 CHECKED: J.M.E. JOB NO: 79-092
 DATE: Dec, 1983 FOR: THE RYLAND GROUP, INC. FILE NO: 79-092-X
 One Knoll North Dr. Suite 503 Columbia, Md. 21045

APPROVED
DIVISION OF LAND DEVELOPMENT & ZONING ADMINISTRATION
HOWARD COUNTY, MARYLAND
DATE 1-4-84

APPROVED FOR PUBLIC WATER AND PUBLIC SEWERAGE SYSTEMS, HOWARD COUNTY HEALTH DEPARTMENT
DATE 1-12-84
 APPROVED HOWARD COUNTY, OFFICE OF PLANNING & ZONING
DATE 1-20-84
 APPROVED FOR PUBLIC WATER AND PUBLIC SEWERAGE, STORM DRAINAGE SYSTEMS AND PUBLIC POADS, HOWARD COUNTY DEPARTMENT OF PUBLIC WORKS
DATE 1-17-84

