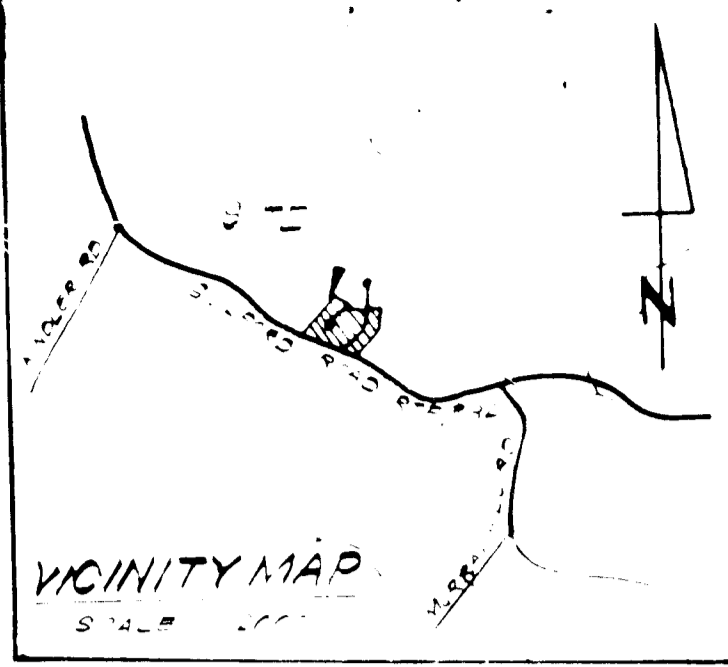


Note: Basement will Not Sewer by Gravity on Lots 24, 25 & 27 thru 31



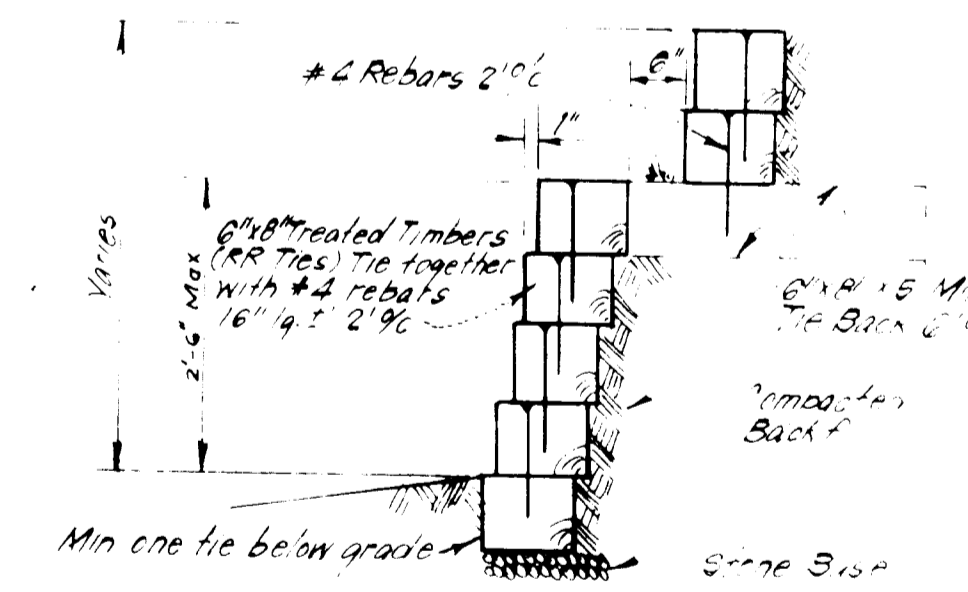
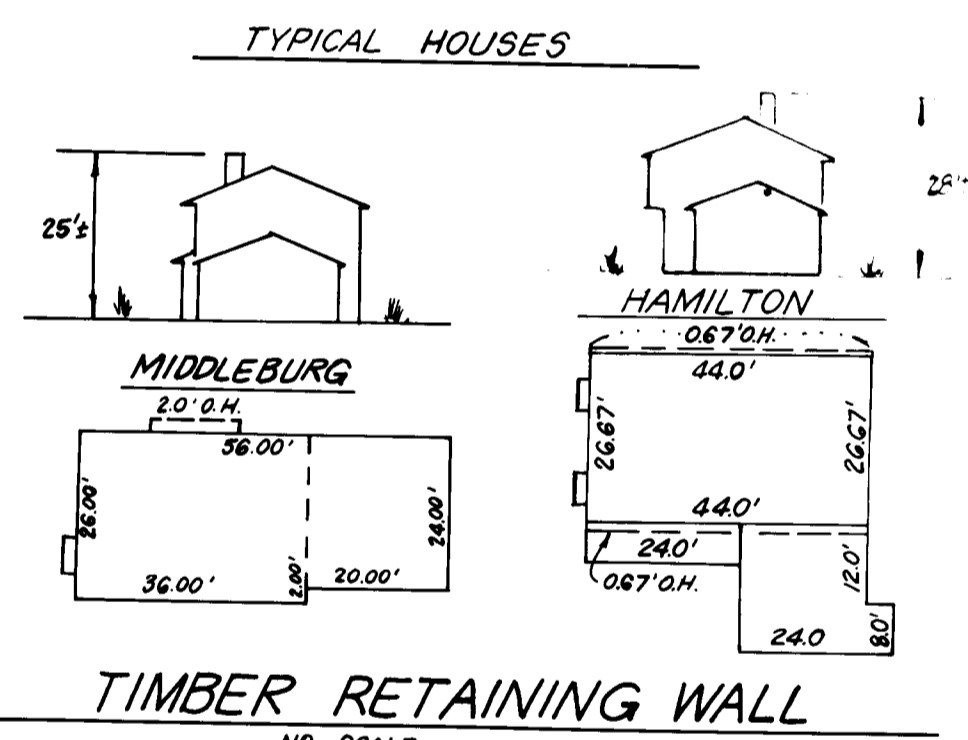
GENERAL NOTES:

- The land included in this plan is zoned R-100.
- The lots shown on this plan conform to Plat No. 24, 25 & 27 thru 31, Phase I of C.D. No. 46.
- All easements are shown in this plan for the purpose of showing the location of the easements and the location of the easement lines.
- The total area included in this plan is 0.851 Acres.
- All easements are public easements.
- All easements are shown in this plan for the purpose of showing the location of the easements and the location of the easement lines.

LEGEND:

- Contour Interval 2' Ft
- Existing Contour
- Proposed Contour
- Spot Elevation
- Location of Structure
- Existing Foundation
- New Foundation
- Retain on Wall
- Total Number of Lots in this Submission 3

ADDRESS CHART	
LOT NUMBER	STREET ADDRESS
34	8821 Sandrope Court
37	8803 Sandrope Court
38	8805 Sandrope Court



SURVEYOR'S CERTIFICATE

I hereby certify that the information contained herein is the same as shown on previously approved SDP 81-61c with the following exceptions:
 1. House Type and Grading has been revised on Lots 34, 37, and 38.
 I further certify that the Sediment & Erosion control measures, as previously approved, will not be affected, the grading is substantially the same as originally approved, the building setbacks comply with the Howard County Zoning and Subdivision Regulations, and the lots have the same geometric configuration as shown on the respective recorded subdivision Plat.

SUBDIVISION NAME COLUMBIA	SECTION/AREA 2/3 Ph 2	LOT/PARCEL # 34, 37 & 38
PLATS OR LIP BLOCK # 4672	ZONE S.E.M.D.	TAX/ZONE MAP 42
WATER CODE E-16	ELEC. DIST. 6TH	DENSUBSTR. 6061.02
SEWER CODE 5290000		

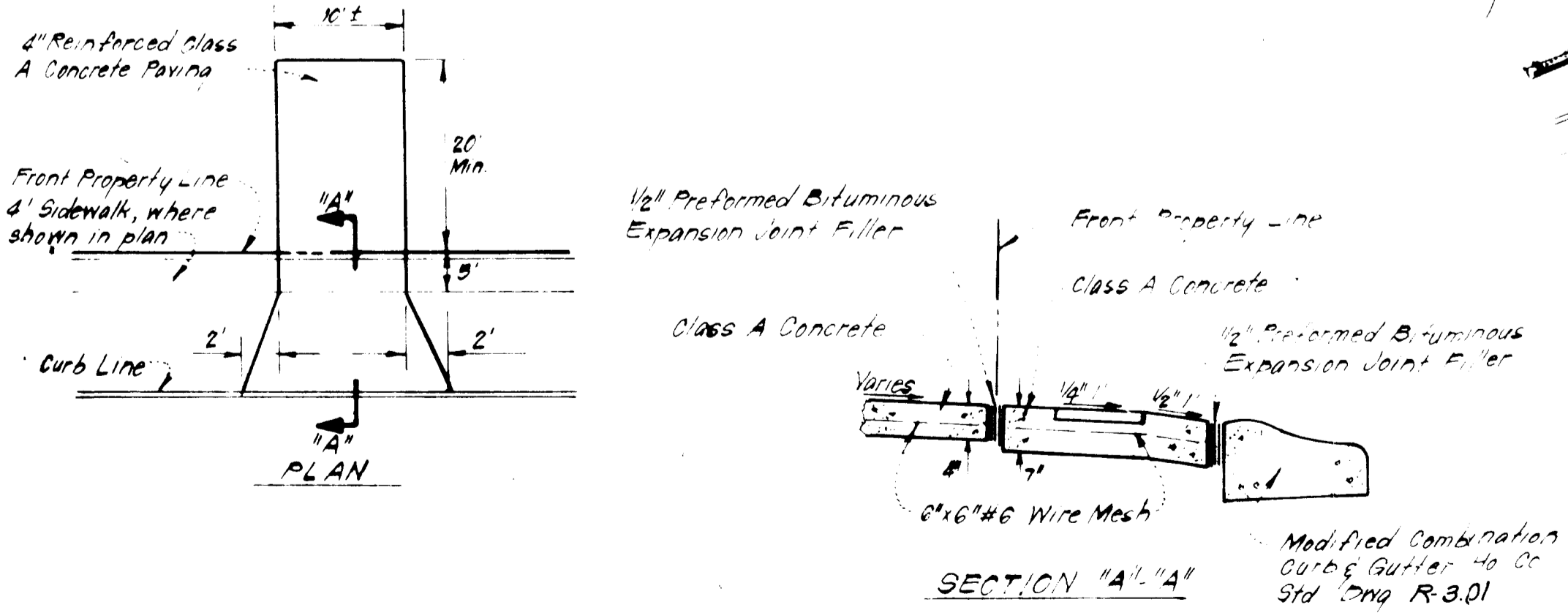
CLARK • FINEKOR & SACKETT
 ENGINEERS • PLANNERS • SURVEYORS
 11315 LOCKWOOD DRIVE SUITE 200 BETHESDA, MARYLAND 20814 (301) 583-3400

DESIGNED: JME
 DRAWN: JME
 CHECKED: JME
 DATE: 10-27-83

REVISED SITE DEVELOPMENT PLAN
 LOTS 34, 37, and 38
COLUMBIA
 VILLAGE OF KINGS CONTRIVANCE
 SECTION 2 AREA 3
 6TH ELECTION DISTRICT
 HOWARD COUNTY, MARYLAND

SCALE: 1"=20'
 DRAWING NO: 1 of 1
 JOB NO: 88-072
 FILE NO: 88-072

FOR: The Ryland Group, Inc. (Columbia B.V.)
 One Knoll North Drive, Suite 503
 Columbia, Md. 21045



DRIVEWAY ABUTTING MODIFIED COMB. CURB & GUTTER
 No. SCALE

APPROVED
 DIVISION OF LAND DEVELOPMENT &
 ZONING ADMINISTRATION
 HOWARD COUNTY, MARYLAND
 DATE: 11-21-83
 M. J. FURR

APPROVED FOR PUBLIC WATER AND PUBLIC SEWERAGE SYSTEMS,
 HOWARD COUNTY HEALTH DEPARTMENT
 DATE: 12-6-83

APPROVED HOWARD COUNTY OFFICE OF PLANNING & ZONING
 DATE: 12-8-83

APPROVED FOR PUBLIC WATER AND PUBLIC SEWERAGE,
 STORM DRAINAGE SYSTEMS AND PUBLIC ROADS
 HOWARD COUNTY DEPARTMENT OF PUBLIC WORKS
 DATE: 11-5-83

Note: Use Residential Driveway Entrance, Ho Co Std Dwg D-34, Pg 89, except where driveway abuts Modified Comb Curb & Gutter.
 Note: Materials and Construction shall be in accordance with Ho Co. Road Constr Code.

VILLAGE OF KINGS CONTRIVANCE
 SECTION 2 AREA 3
 PHASE I