

GENERAL NOTES:

- The Land included in this plan is zoned: I-14W T-10 (A) to (B-1)
- The Lots shown on this plan are covered by Final Development Plan Sub-116 Part I-A
- All elevations are based on traverse control's for Columbia established by Maps, Inc. in 1965 by Pauline J. Justice in 3' x 3" which controls were tied to Maryland Bureau of Control survey monuments and to U.S. Coast and Geodetic Survey monuments in the Columbia area.
- The area covered in this submission is located on Tax Map 9642.
- The total area included in this plan is 0.848 acres.
- All easements are public & existing.
- Any damage to county owned rights of way or paving shall be corrected at developer's expense.
- Number of Units shown: 10.
- Gross floor area excluding Basement = 1200 sq ft.

LEGEND:

- 1 Contour Interval 2.5'
- 2 Existing Contour 350'
- 3 Proposed Contour 350'
- 4 Spot Elevation +50'
- 5 Director of Drainage
- 6 Exist Storm Drain Line
- 7 Exist Sewer Line
- 8 Exist Water Line
- 9 Retaining Wall
- 10 Walk Out Basement

ADDRESS CHART	
LOT NUMBER	STREET ADDRESS
A-165	7201 CARVED STONE
A-166	7203 " "
A-169	7209 " "
A-170	7211 " "
A-195	7221 SLEEPSOFT CIRCLE
A-196	7223 " "
A-207	7206 " "
A-208	7204 " "
A-205	7210 " "
A-206	7208 " "

SURVEYOR'S CERTIFICATE

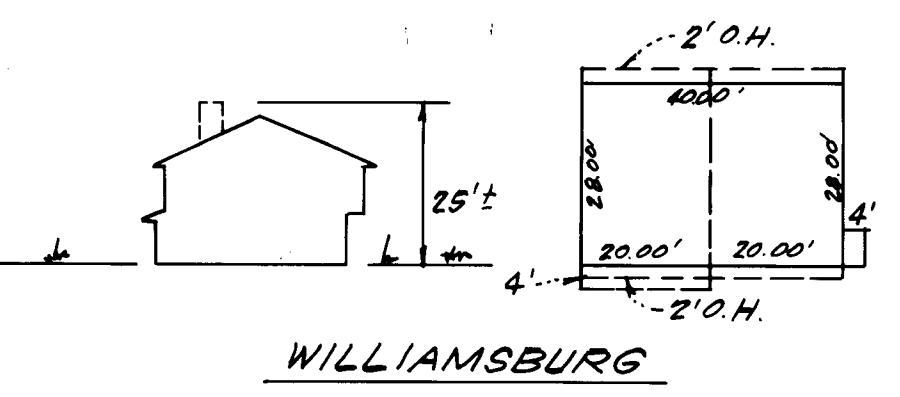
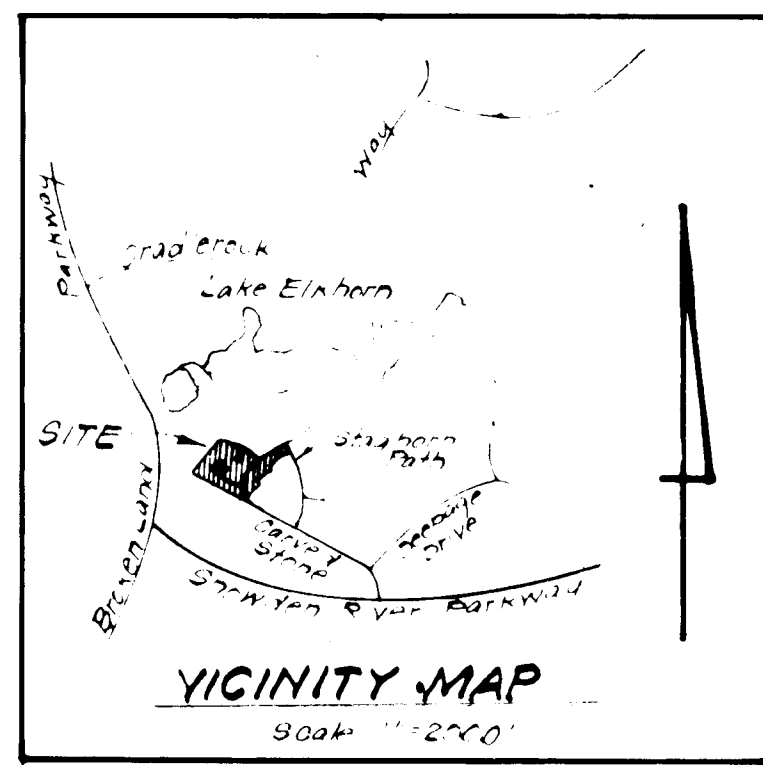
I hereby certify that the information contained herein is the same as shown on previously approved SDP 80-37, with the following exceptions:

1. House Type and Grading has been revised on Lots A-165, A-166, A-169, A-170, A-195, A-196, A-207 & A-208.

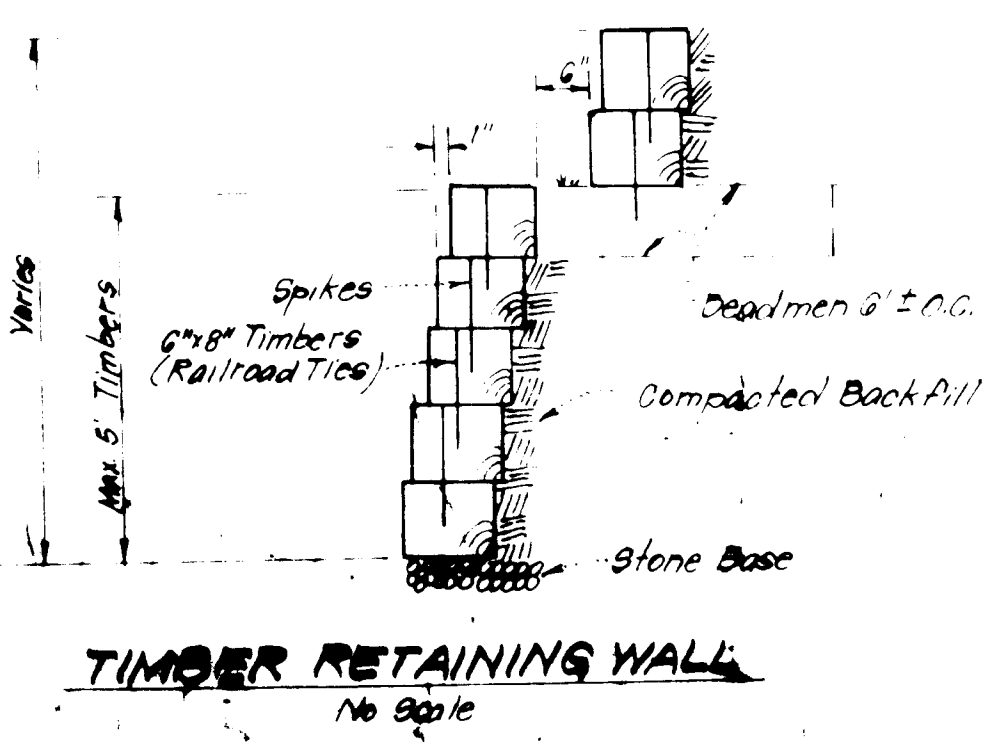
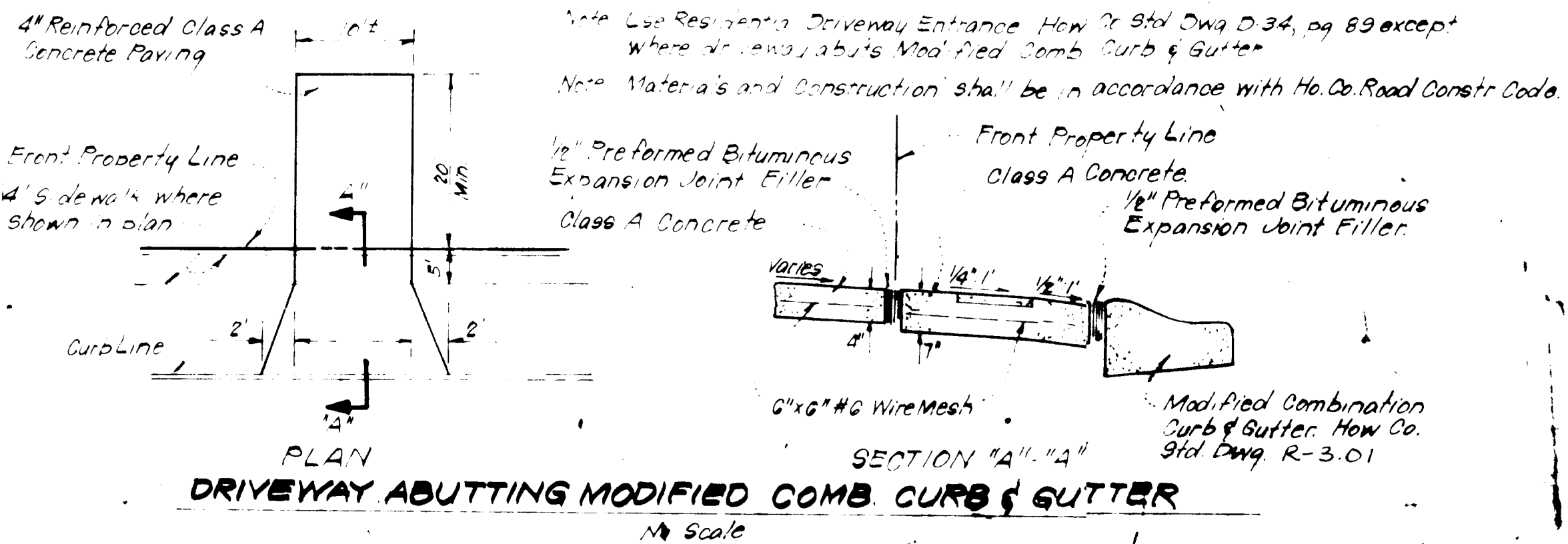
2. I further certify that the Sediment & Erosion control measures, as previously approved, will not be affected, the grading is substantially the same as originally approved, the building setbacks comply with Howard County Zoning and Subdivision Regulations, and the lot has the same geometric configuration as shown on the respective recorded subdivision Plans.

12-2-83
Date

Donald B. Sackett
DONALD B. SACKETT
Registered Land Surveyor
Md. No. 6059



TYPICAL HOUSE TYPE
No Scale



APPROVED FOR PUBLIC WATER AND PUBLIC SEWERAGE SYSTEMS,
HOWARD COUNTY HEALTH DEPARTMENT

James M. Boyd 12/1/83
HEALTH OFFICER

APPROVED HOWARD COUNTY OFFICE OF PLANNING & ZONING
Thomas J. Annis 12-9-83
PLANNING DIRECTOR

APPROVED FOR PUBLIC WATER AND PUBLIC SEWERAGE,
STORM DRAINAGE SYSTEMS, AND PUBLIC ROADS
HOWARD COUNTY DEPARTMENT OF PUBLIC WORKS

Walter F. Nunn 12-8-83
DIRECTOR

APPROVED
DIVISION OF LAND DEVELOPMENT & ZONING ADMINISTRATION
HOWARD COUNTY, MARYLAND
DATE 11-17-83

SUBDIVISION NAME		SECT./AREA	LOT PARCELS
VILLAGE OF OWEN BROWN		2 / 1	A-165, A-166, A-169, A-170, A-195, A-196, A-207, A-208
PLAT/LIT	BLDG	ZONE	PAVEMENT/ELEC/DIST
602/4308	3	ATTACHED	6"TH 6061.03
WATER CODE		SEWER CODE	
E12		5330300	

CLARK • FINEROCK & SACKETT
ENGINEERS • PLANNERS • SURVEYORS

DESIGNED: REVISED SITE DEVELOPMENT PLAN
SCALE: 1/4" = 30'

DRAWN: V.L.B.
JOB NO. 78-1177

CHECKED: M.E.
FILE NO. 78-1177-X

DATE: 10-26-83

FOR: The Ryland Group Inc.
One Knoll North Drive Suite 503
Columbia, Md. 21045