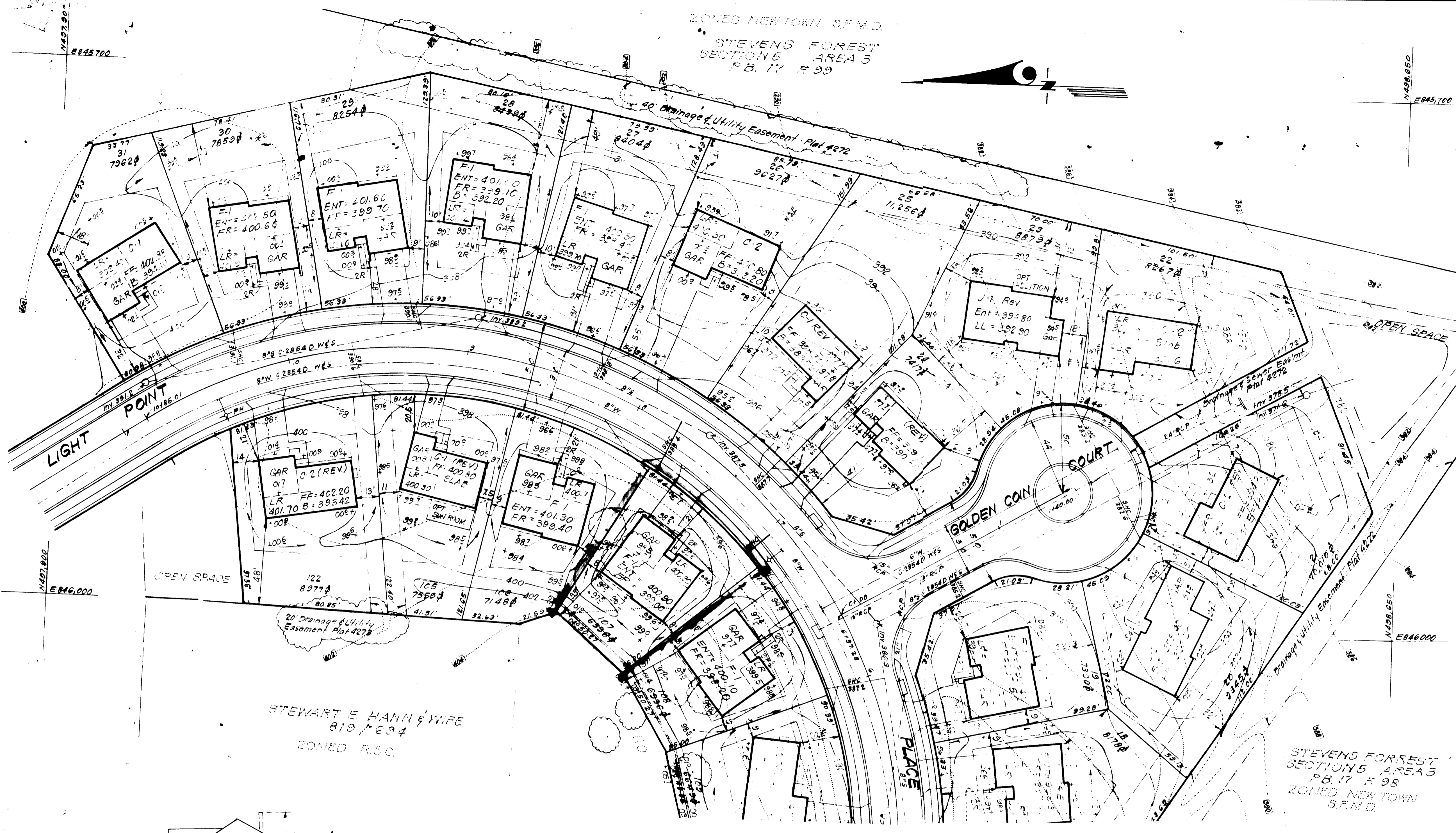
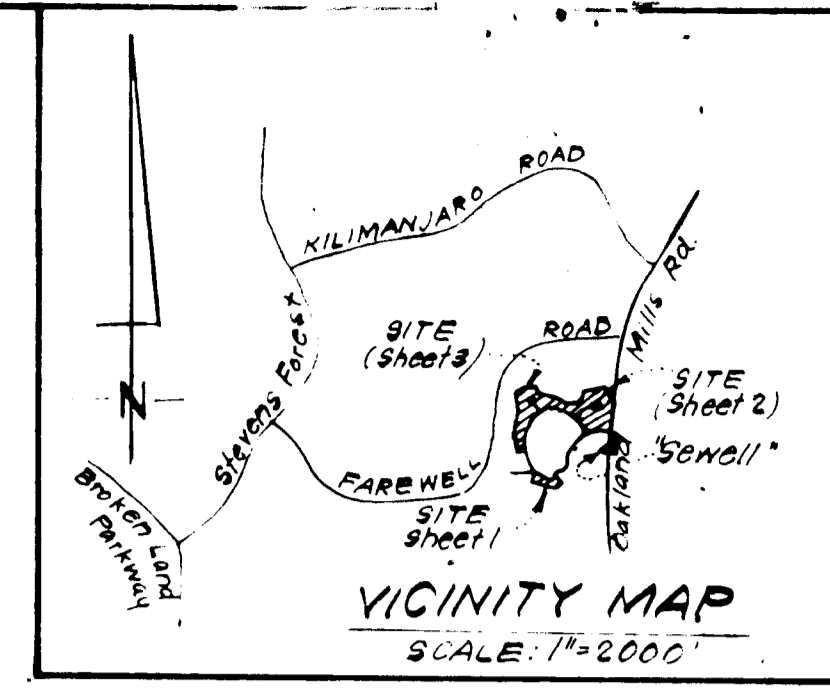


ZONED NEWTOWN S.F.M.D.

STEVENS FOREST SECTION 5 AREA 3 P.B. 17 & 98

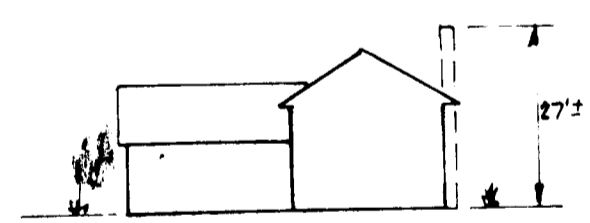


GENERAL NOTES:

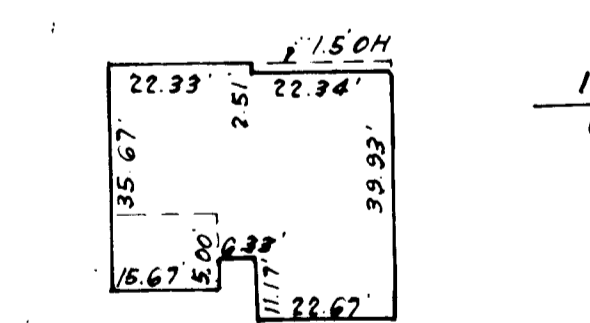
- The Land included in this plan is zoned: R-80
- The Lots shown on this plan are covered by Final Development Plan Phase
- All coordinates are based on Howard County Control Station "Senell"
- The area covered in this submission is located on Tax Map # 36 Part of Parcel 247
- The total area included in this plan is 0.145 Acres
- All roadways are public & existing
- Any damage to county owned rights of way shall be corrected at the developer's expense

LEGEND:

- Contour Interval 2 Ft
- Existing Contour
- Proposed Contour
- Spot Elevation +105
- Direction of Drainage
- Exist Trees to be retained
- Walk Out Basement

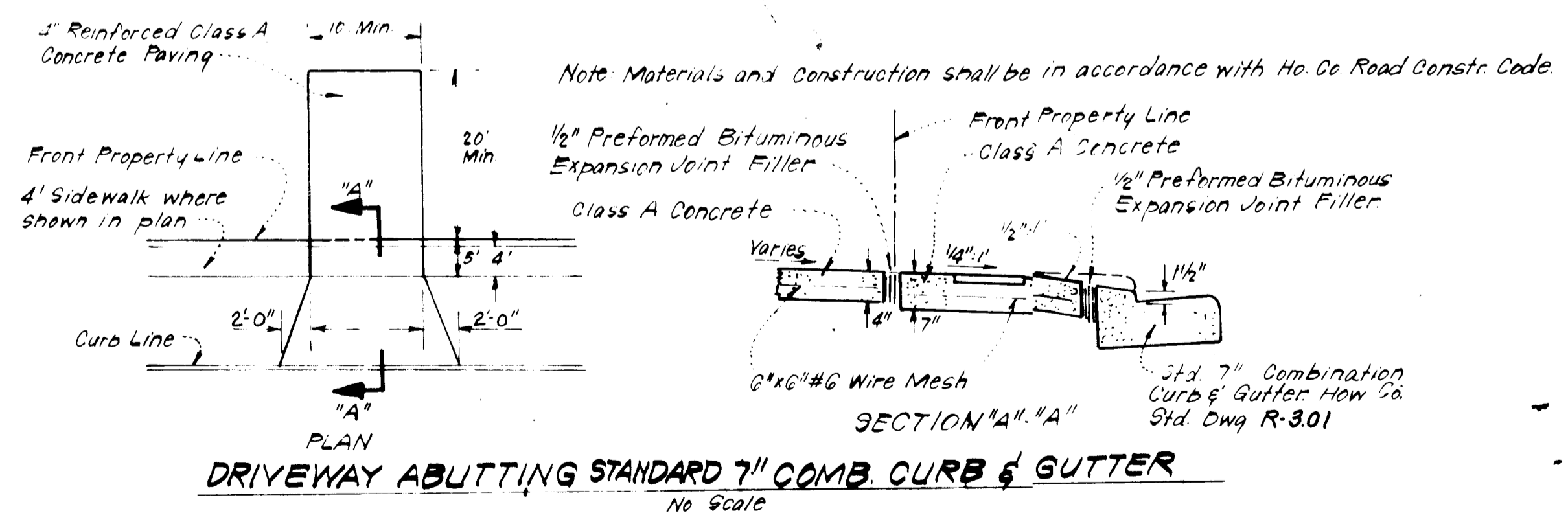


"F-1" SPLIT LEVEL



TYPICAL HOUSE No Scale

1725.67 sq. House Size = 27% Max. Build. coverage
6356 sq. Lot Size



DRIVEWAY ABUTTING STANDARD 7" COMB. CURB & GUTTER No Scale

SURVEYOR'S CERTIFICATE

I hereby certify that the information contained herein is the same as shown on previously approved S.D.P. 80-100 with the following exceptions:

- House Type and Grading has been revised on Lot 107

I further certify that the Sediment & Erosion control measures, as previously approved, will not be affected, the grading is substantially the same as originally approved, the building setbacks comply with Howard County Zoning and Subdivision Regulations, and the lot has the same geometric configuration as shown on the respective recorded subdivision Plat.

Oct. 17, 1983 Date

Donald B. Sackett
Registered Land Surveyor
Md. No. 6059

ADDRESS CHART	
LOT NUMBER	STREET ADDRESS
107	6261 LIGHT POINT PLACE

SUBDIVISION NAME		SECT./AREA	LOT/PLAT/BLK#
MARBELLA II		1	107
PLAT #	BLK#	ZONE	TAX/ZONING MAP
4273	10	R.S.C.	36
ELEC. DIST.		CENSUS TR.	
6TH		6061.03	
WATER CODE		SEWER CODE	
E09		5412900 & 5413400	

APPROVED FOR PUBLIC WATER AND PUBLIC SEWERAGE SYSTEMS, HOWARD COUNTY HEALTH DEPARTMENT

APPROVED HOWARD COUNTY OFFICE OF PLANNING & ZONING

APPROVED FOR PUBLIC WATER AND PUBLIC SEWERAGE, STORM DRAINAGE SYSTEMS AND PUBLIC ROADS, HOWARD COUNTY DEPARTMENT OF PUBLIC WORKS

CHIEF BUREAU OF ENGINEERING

APPROVED
DIVISION OF LAND DEVELOPMENT &
ZONING ADMINISTRATION
HOWARD COUNTY, MARYLAND
DATE 11-7-83

CLARK • FINECROCK & SACKETT
ENGINEERS • PLANNERS • SURVEYORS
11315 LOCKWOOD DRIVE SILVER SPRING, MARYLAND 20904 (301) 593 3400

DESIGNED: J.M.E.
DRAWN: K.J.W.
CHECKED: J.M.E.
DATE: Oct. 1983

REVISED SITE DEVELOPMENT PLAN
LOT 107
MARBELLA II
6th ELECTION DISTRICT
HOWARD COUNTY, MARYLAND
FOR: COLUMBIA BUILDERS, INC.
606 American City Bldg
Columbia, Md. 21024

SCALE: 1/4" = 30'
DRAWING: 1041
JOB NO.: 72999
FILE NO.: 79000-4