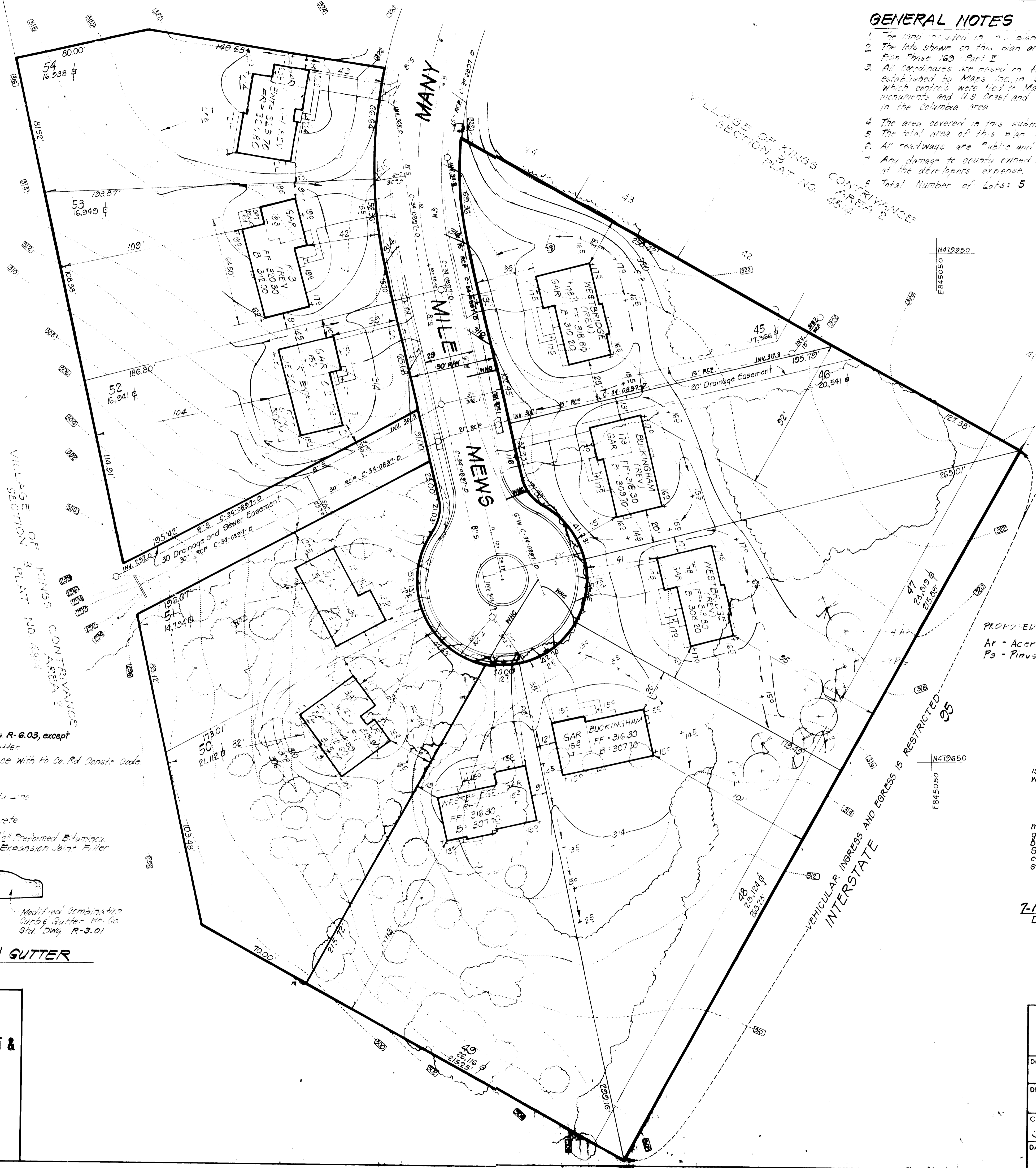
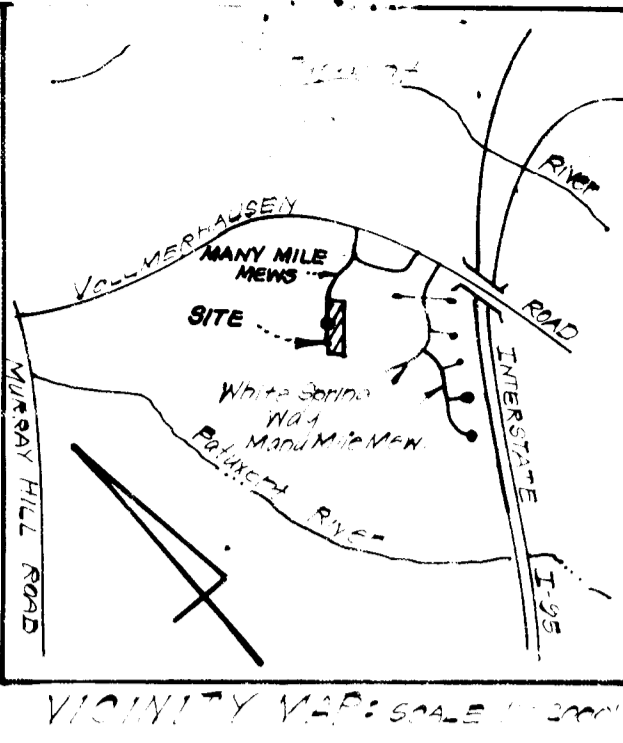


TYPICAL HOUSES
NO SCALE



GENERAL NOTES

- The lots included in this plan are covered by New Town S.F.L.D. #38.M.D.
- The lots shown on this plan are covered by Final Development Plan Phase 162 - Part I
- All coordinates are based on traverse control for Columbia established by Maps, Inc. in 1965 and by Rudolph & Veschke in 1967, which control were tied to Maryland Bureau of Central Survey monuments and U.S. Geol. and Geod. Survey monuments in the Columbia area.
- The area covered in this submission is located on Tax Map #27
- The total area of this plan is 2.685 Acres
- All roadways are Public and Easement.
- Any damage to county owned rights of way to be corrected at the developer's expense.
- Total Number of Lots: 5



LEGEND:

- Property Lines
- Existing Control
- Proposed Control
- Spot Elevation
- Direction of Drainage
- Existing Trees to be retained
- Retaining Wall

ADDRESS CHART	
LOT NUMBER	STREET ADDRESS
45	8555 MANY MILE MEWS
46	8559 "
47	8563 "
48	8567 "
49	8571 "

PROPOSED SCREEN PLANTING
Ar - Acer rubrum 2 1/2" C.I. B.H.
Ps - Pinus strobus 6' H. B.H.

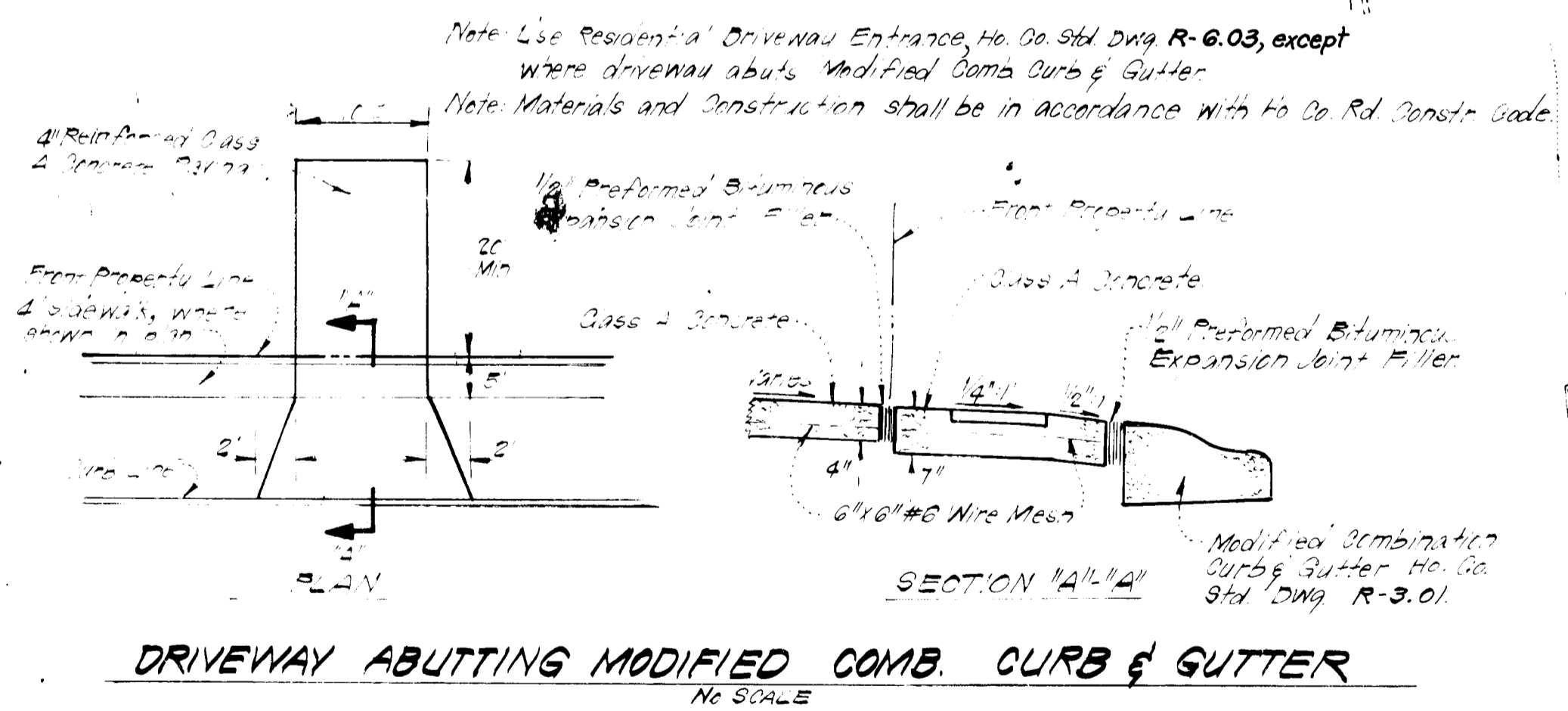
SURVEYOR'S CERTIFICATE

I hereby certify that the information contained hereon is the same as shown on previously approved S.D.P. 81-157C with the following exceptions:
1. House Type and Grading has been revised on Lots 45 thru 49.
I further certify that the Sediment & Erosion control measures, as previously approved, will not be affected, the grading is substantially the same as originally approved, the building setbacks comply with Howard County Zoning and Subdivision Regulations, and the lot has the same geometric configuration as shown on the respective recorded subdivision plat.

7-15-83
Date

Donald B. Sackett
DONALD B. SACKETT
Registered Land Surveyor
Md. No. 6053

SUBDIVISION NAME COLUMBIA	Y.O.C.C.	SECT./AREA 3/2	LOT/PARCEL # P. 462
PLAT # OR L.P. 4814	BLOCK # 3	ZONE S.F.L.D.	TAX ZONE MAP 6TH
WATER CODE E15	SEWER CODE 620000	ELEC. DIST. 6TH	CENSUS TR. 6062



DRIVEWAY ABUTTING MODIFIED COMB. CURB & GUTTER
NO SCALE

APPROVED FOR PUBLIC WATER AND PUBLIC SEWERAGE SYSTEMS,
HOWARD COUNTY HEALTH DEPARTMENT
DATE 7-21-83
APPROVED HOWARD COUNTY OFFICE OF PLANNING & ZONING
DATE 9-6-83
APPROVED FOR PUBLIC WATER AND PUBLIC SEWERAGE,
STORM DRAINAGE SYSTEMS AND PUBLIC ROADS
HOWARD COUNTY DEPARTMENT OF PUBLIC WORKS
DATE 8-31-83

APPROVED
DIVISION OF LAND DEVELOPMENT & ADMINISTRATION
MARYLAND
8-8-83

CLARK • FINEFROCK & SACKETT
ENGINEERS • PLANNERS • SURVEYORS
11335 LOCKWOOD DRIVE SILVER SPRING, MARYLAND 20904 3011 593 3400

DESIGNED J.M.E.	REVISED SITE DEVELOPMENT PLAN LOTS 45, 46, 47, 48 AND 49	SCALE 1" = 30'
DRAWN D.B.R.	COLUMBIA	DRAWING 1051
CHECKED J.M.E.	VILLAGE OF KINGS CONTRIVANCE SECTION 3 AREA 2	JOB NO. 80-104
DATE	6TH ELECTION DISTRICT HOWARD COUNTY, MARYLAND	FILE NO. 80-104-X

FOR: PULTE HOME CORP.
7223 Parkway Drive Suite 106
Hanover, Maryland 21076