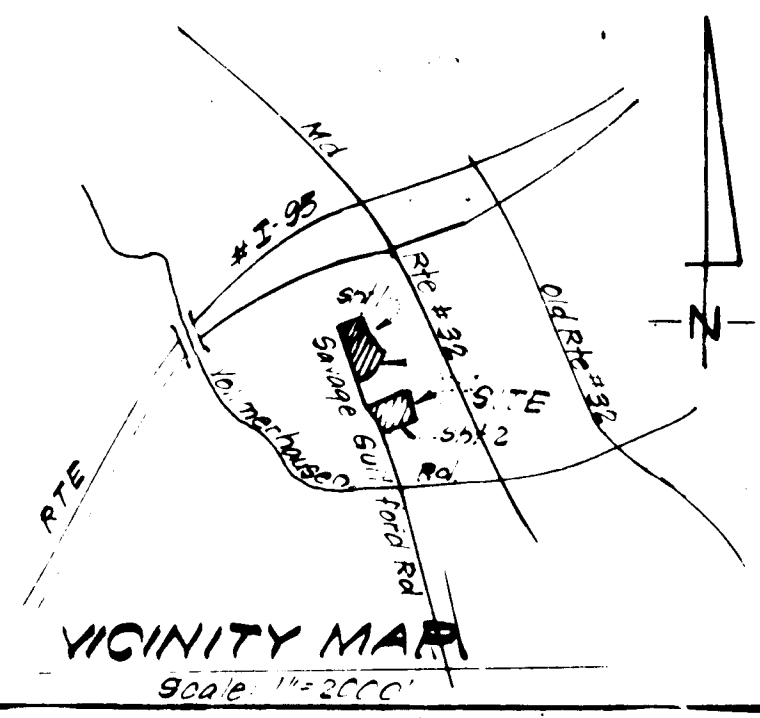


- LEGEND:**
- 1 Contour Interval 2 FT
 - 2 Existing Contour 100'
 - 3 Proposed Contour 900'
 - 4 Spot Elevation -000'
 - 5 Direction of Drainage
 - 6 Existing Trees to be retained

- 1/2" for Deciduous Trees (oak, maples) 2 1/2" Cal 12-14 ft
- Intermediate Flowering Tree 2 1/2" Cal 8-10 ft
- Evergreen Trees (pines, spruce) 2 1/2" Cal 6-8 ft

Address Chart

Lot Number	Street Address
145	7976 DRUMBEAT PLACE
149	8039 ANDIRON LANE
151	8047 " "
155	8058 " "



- GENERAL NOTES:**
1. The Land included in this plan is zoned: R90
 2. The Lots shown on this plan are covered by Final Development Plan Phase 174
 3. All coordinates are based on traverse controls for Columbia established by Maps 1009 in 1966 by Pyramid & Lesche in 1968, which controls were tied to Maryland and District of Columbia Survey monuments and to U.S. Coast & Geodetic Survey monuments in the Columbia area.
 4. The area covered in this submission is located on Tax Map # 42
 5. The total area included on this plan is 0.782 Acres
 6. All roadways are public & existing
 7. Any damage to county owned rights of way shall be corrected at the developer's expense.

Subdivision Name Greenbriar Woods	Sect./Area 5/1	Lot/Hazels 145, 149, 151 & 155
Plat # or L.F. 4346 & 4349	Block # 22	Zone R-42
Map 4346 & 4349	Tax/Zone Map 4-42	Elec. Dist 6064
Water Code E-14	Sewer Code 5021.500	Census Tr.

SURVEYOR'S CERTIFICATE

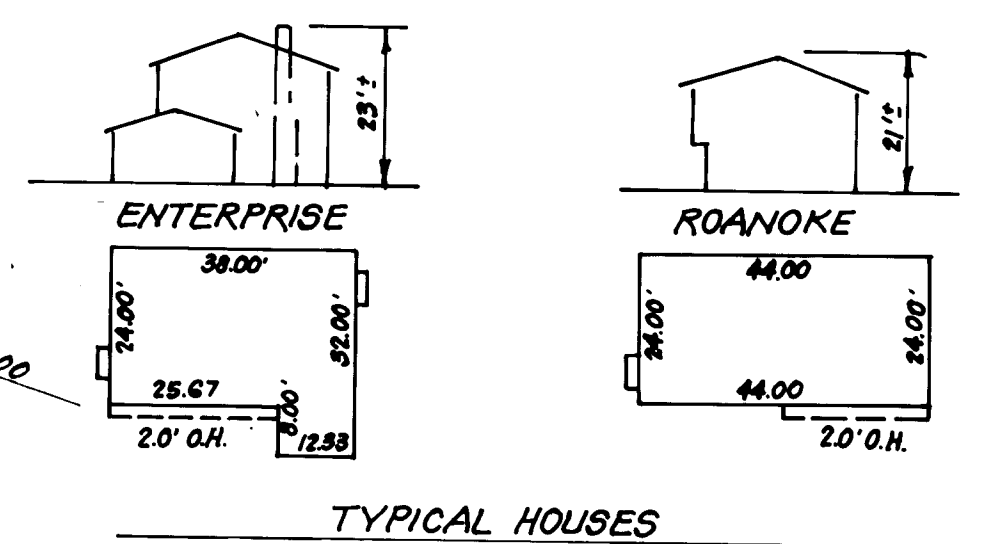
I hereby certify that the information contained hereon is the same as shown on previously approved SDP 80-74-C with the following exceptions:

1. House Type and Grading has been revised on Lots 145, 149, 151 and 155

I further certify that the Sediment & Erosion control measures, as previously approved, will not be affected, the grading is substantially the same as originally approved, the building setbacks comply with Howard County zoning and Subdivision Regulations, and the lot has the same geometric configuration as shown on the respective recorded subdivision plat.

7-6-83
Date

Donald B. Sackett
DONALD B. SACKETT
Registered Land Surveyor
Md. No. 6059

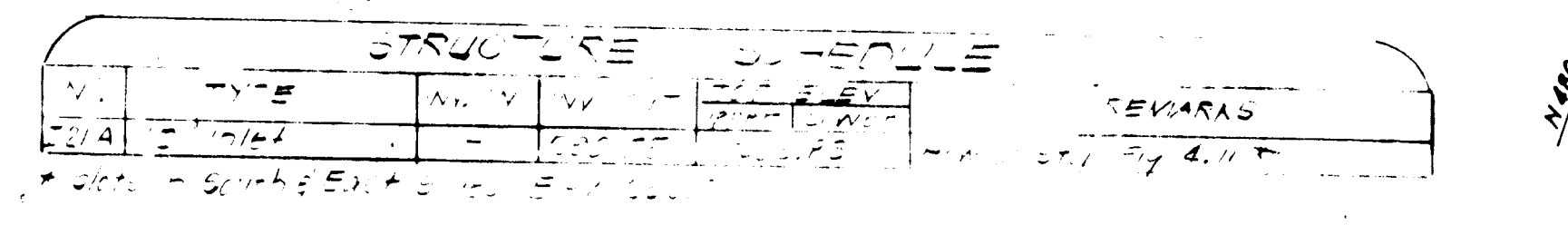
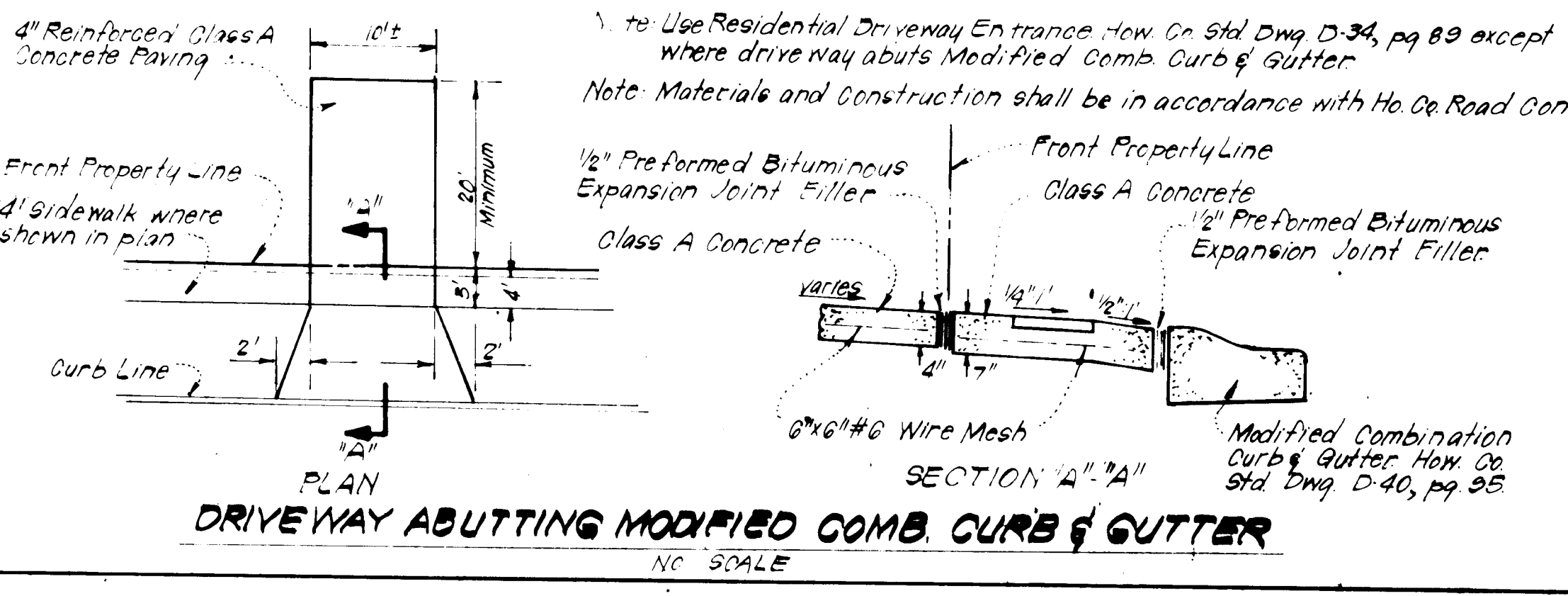


APPROVED
DIVISION OF LAND DEVELOPMENT &
PLANNING ADMINISTRATION
HOWARD COUNTY, MARYLAND
DATE 8-5-83

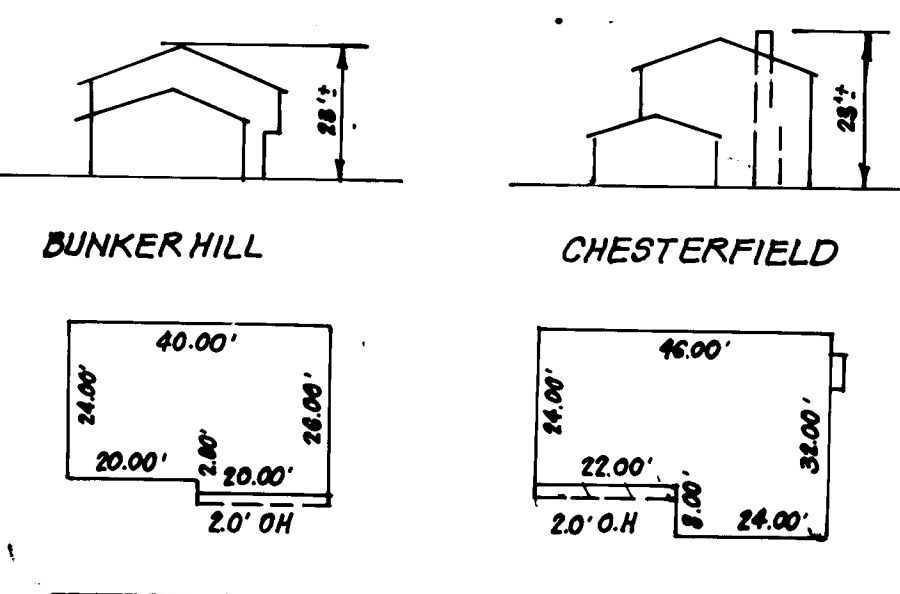
APPROVED FOR PUBLIC WATER AND PUBLIC SEWERAGE SYSTEMS,
HOWARD COUNTY HEALTH DEPARTMENT
DATE 8-23-83

APPROVED HOWARD COUNTY OFFICE OF PLANNING & ZONING
DATE 8-25-83

APPROVED FOR PUBLIC WATER AND PUBLIC SEWERAGE,
STORM DRAINAGE SYSTEMS AND PUBLIC ROADS,
HOWARD COUNTY DEPARTMENT OF PUBLIC WORKS
DATE 8-22-83



NOTE:
The contractor or developer shall contact the Construction Inspection/Survey Division, 24 hours in advance of commencement of work at 792-7272



PLAT REFERENCE: 4348 & 4349

CLARK • FINEROCK & SACKETT
ENGINEERS • PLANNERS • SURVEYORS
11315 LOCKWOOD DRIVE SILVER SPRING, MARYLAND 20904 301-593-3400

DESIGNED: J.M.E.
DRAWN: K.I.M.
CHECKED: J.M.E.
DATE: July, 1983

REVISED SITE DEVELOPMENT PLAN
LOTS 145, 149, 151 AND 155

GREENBRIAR WOODS
VILLAGE OF KINGS CONTRIVANCE
SECTION 5 AREA
6TH ELECTION DISTRICT
HAYWARD COUNTY, MARYLAND
FOR THE RYLAND GROUP, INC.
One Knoll North Suite 503
Columbia, Md. 21045

SCALE: 1/4" = 30'
DRAWING: 1 of 1
JOB NO.: 79-093
FILE NO.: 79-093-X

SDP-84-08