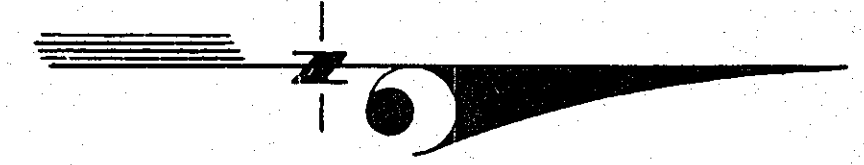
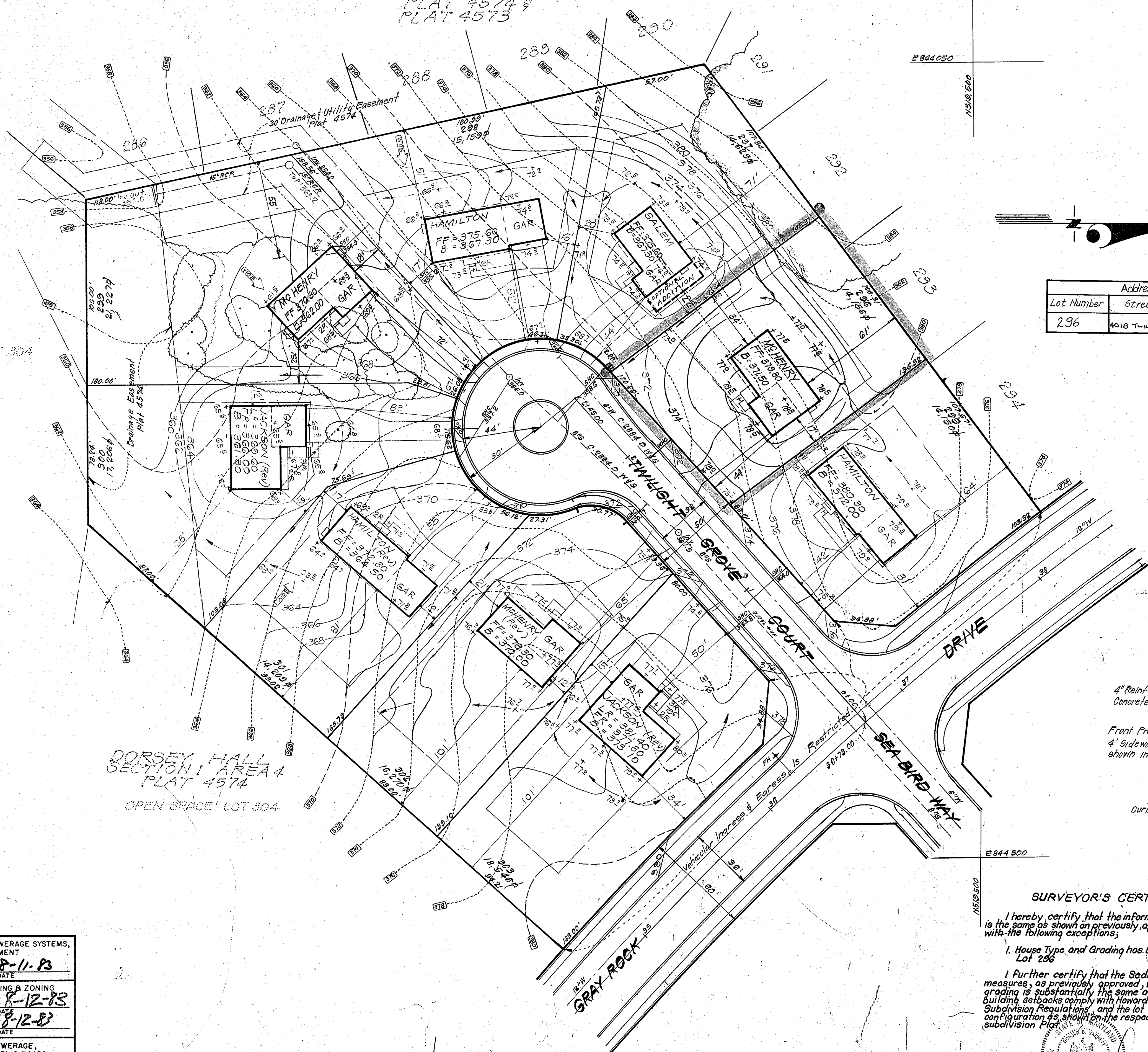
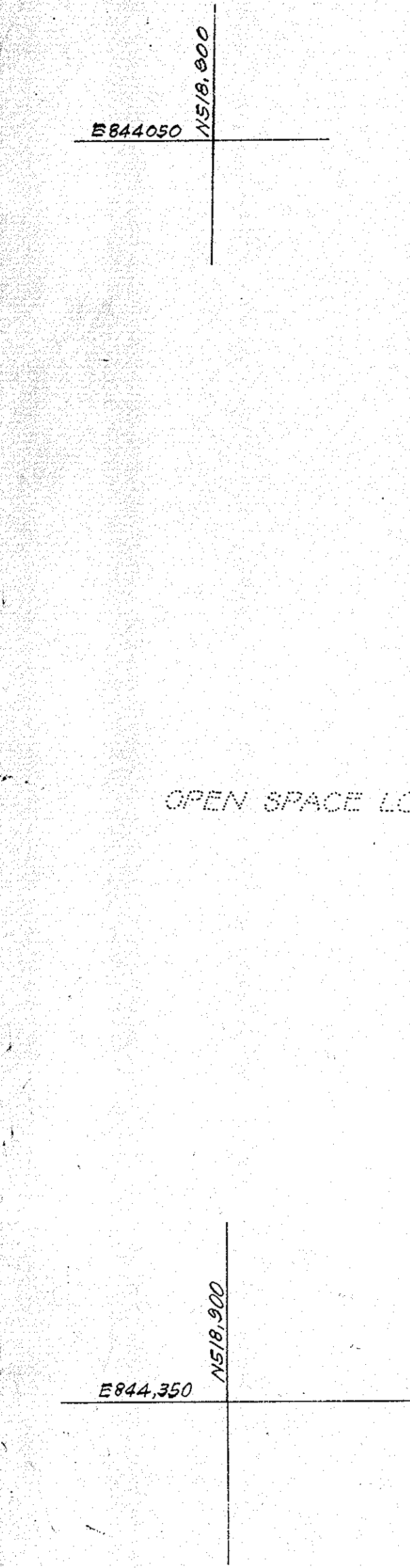
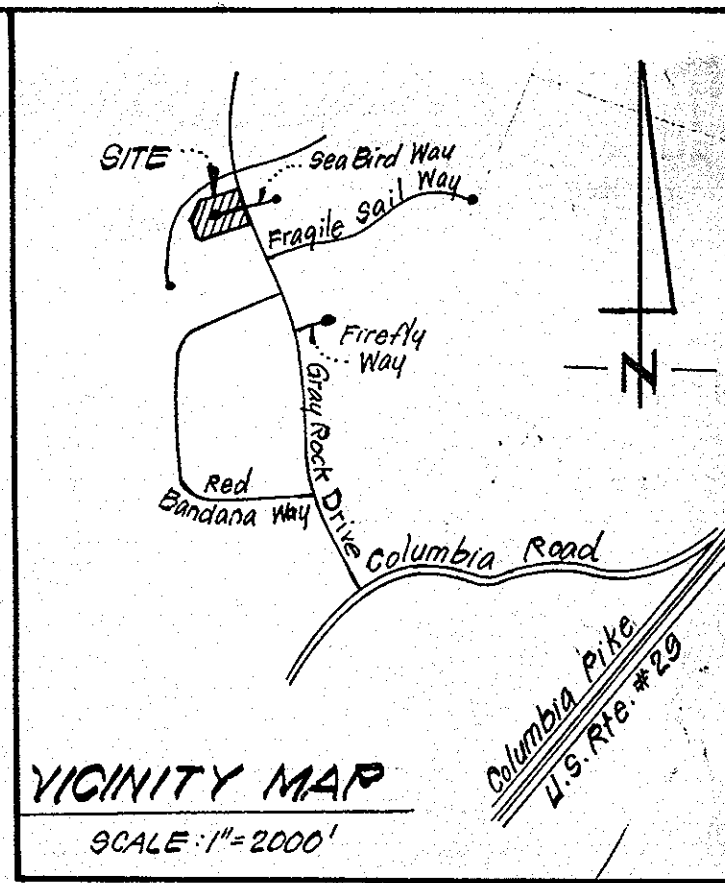
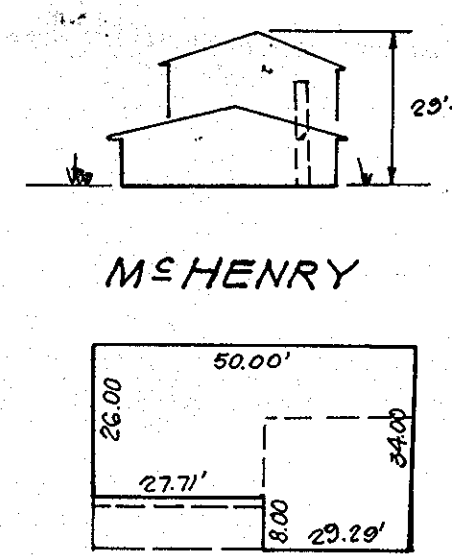


NO.	REVISION	DATE
1	Use Type & Gr. rev on Lot 299 From Salem to McHenry	1-12-83
2	Use Type & Gr. rev on Lot 296 From Hamilton to McHenry	6-29-83

DORSEY HALL
SECTION 1 AREA 4
PLAT 4574 &
PLAT 4573



Address Chart	
Lot Number	Street Address
296	4018 TWILIGHT GROVE COURT

GENERAL NOTES:

- The Land included in this plan is zoned: R-20.
- All coordinates are based on traverse control for Columbia established by Maps Inc. in 1968 by Furdum & Jeschke in 1968 which controls were tied to Maryland Bureau of Control Survey monuments to U.S. Coast & Geodetic Survey Monuments in the Columbia area.
- The area covered in this submission is located on Tax Map # 24.
- The total area included on this plan is 0.325 Acres.
- All roadways are public and existing.
- Any damage to county owned rights of way shall be corrected at the developer's expense.
- Total Number of Lots is 1.

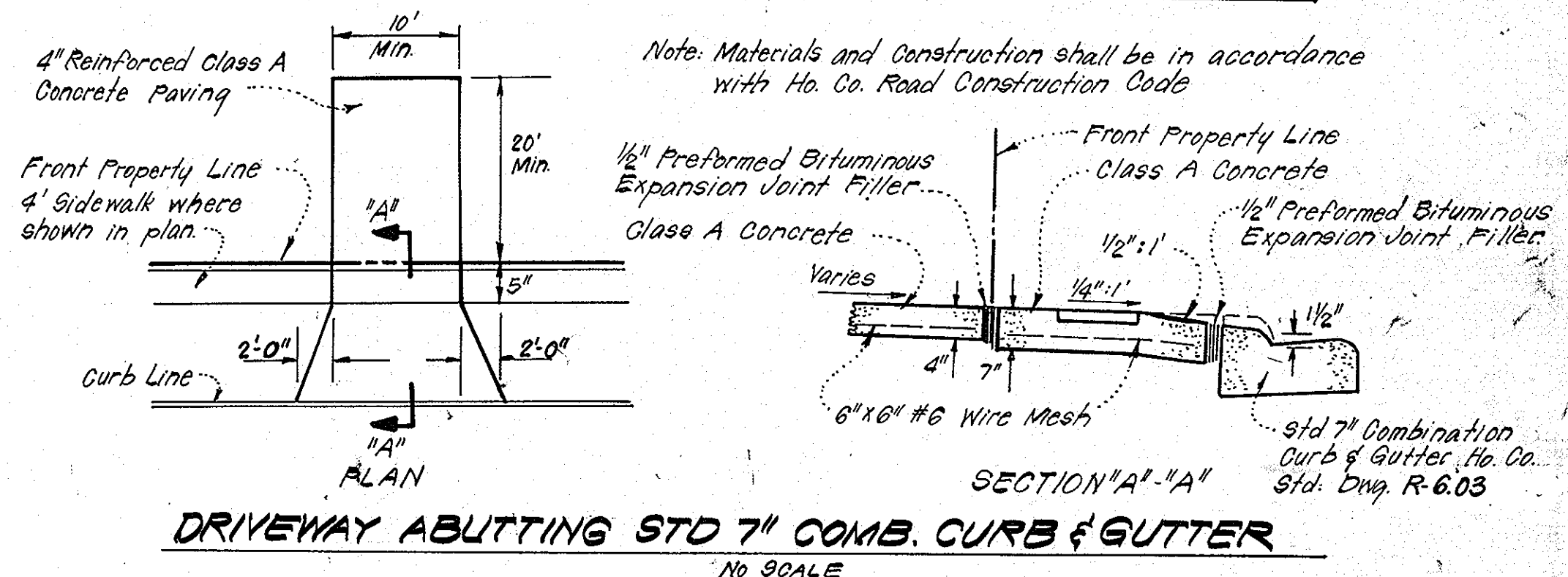
LEGEND:

- Contour Interval: 2 Ft.
- Existing Contour: -580
- Proposed Contour: -380
- Spot Elevation: +80±
- Direction of Drainage: (arrow symbol)
- Exist. Trees to be retained: (tree symbol)
- Walkout Basement: (WOB symbol)

NOTE:
The contractor or developer shall contact the Construction Inspection Survey Division, 24 hours in advance of commencement of work at 792-7272.

Subdivision Name	Acres	Lot/Parcel
Dorsey Hall	1.4	296
Plat # of 1/4 Block	# 24	2nd
Zone	R-20	
Water Code	F-11	
Sewer Code	SEB5000	

Note: Materials and Construction shall be in accordance with Ho. Co. Road Construction Code



APPROVED
DIVISION OF LAND DEVELOPMENT &
ZONING ADMINISTRATION
HOWARD COUNTY, MARYLAND
DATE: 7-21-83

DORSEY HALL
SECTION 1 AREA 4
PLAT 4574
OPEN SPACE LOT 304

SURVEYOR'S CERTIFICATE

I hereby certify that the information contained hereon is the same as shown on previously approved S.D.P. 81-28 with the following exceptions:

- House Type and Grading has been revised on Lot 296

I further certify that the Sediment & Erosion control measures, as previously approved, will not be affected, the grading is substantially the same as originally approved, the building setbacks comply with Howard County Zoning and Subdivision Regulations, and the lot has the same geometric configuration as shown on the respective recorded subdivision Plat.

June 30, 1983
Date
DONALD B. SACKETT
Registered Land Surveyor
Md. No. 0059

Plat Reference: Dorsey Hall 1/4 Plat No. 4574

CLARK • FINEFROCK & SACKETT ENGINEERS • PLANNERS • SURVEYORS 11315 LOCKWOOD DRIVE SILVER SPRING, MARYLAND 20904 (301) 593 3400		
DESIGNED J.M.E.	REVISED SITE DEVELOPMENT PLAN LOT 296 DORSEY HALL SECTION 1 AREA 4 2ND ELECTION DISTRICT HOWARD COUNTY, MARYLAND	SCALE 1"=30'
DRAWN K.C.		DRAWING 104-1
CHECKED J.M.E.		JOB NO. 79-092
DATE June, 1983	FOR: THE RYLAND GROUP, INC. (Col. Div.) ONE KNOLL NORTH Suite 503 Columbia Md., 21045	FILE NO. 79-092-X

APPROVED FOR PUBLIC WATER AND PUBLIC SEWERAGE SYSTEMS, HOWARD COUNTY HEALTH DEPARTMENT	8-11-83
APPROVED HOWARD COUNTY OFFICE OF PLANNING & ZONING	8-12-83
APPROVED FOR PUBLIC WATER AND PUBLIC SEWERAGE, STORM DRAINAGE SYSTEMS AND PUBLIC ROADS HOWARD COUNTY DEPARTMENT OF PUBLIC WORKS	8-9-83
APPROVED FOR PUBLIC WATER AND PUBLIC SEWERAGE, STORM DRAINAGE SYSTEMS AND PUBLIC ROADS HOWARD COUNTY DEPARTMENT OF PUBLIC WORKS	8-8-83