

DOBBIN ROAD COMMERCIAL CENTER
SECTION 1 AREA 1
P.B. NO. CMP 5307
ZONED: NEW TOWN (COMMERCIAL)

PROPOSED CHICKEN GEORGE

PARCEL R-1

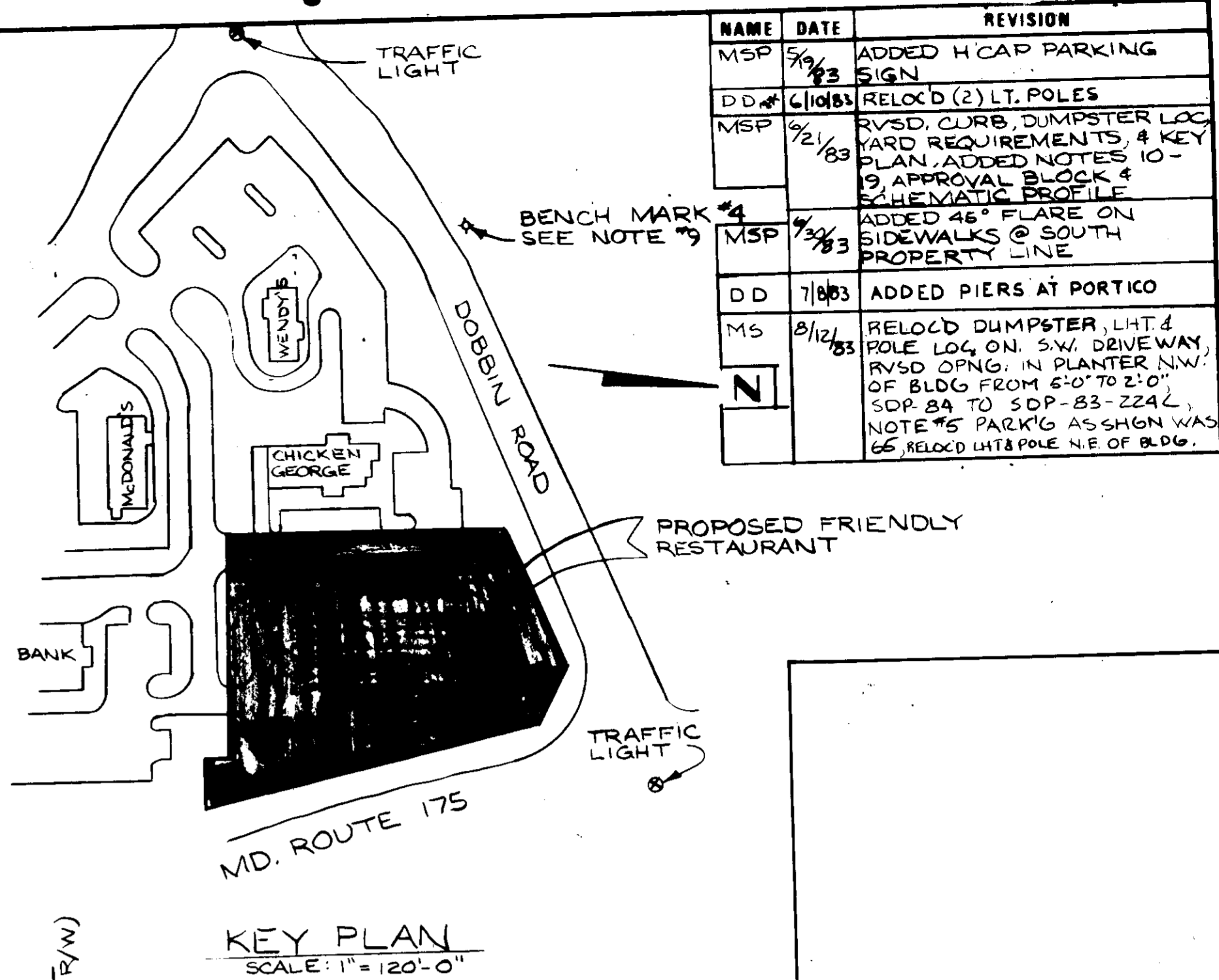
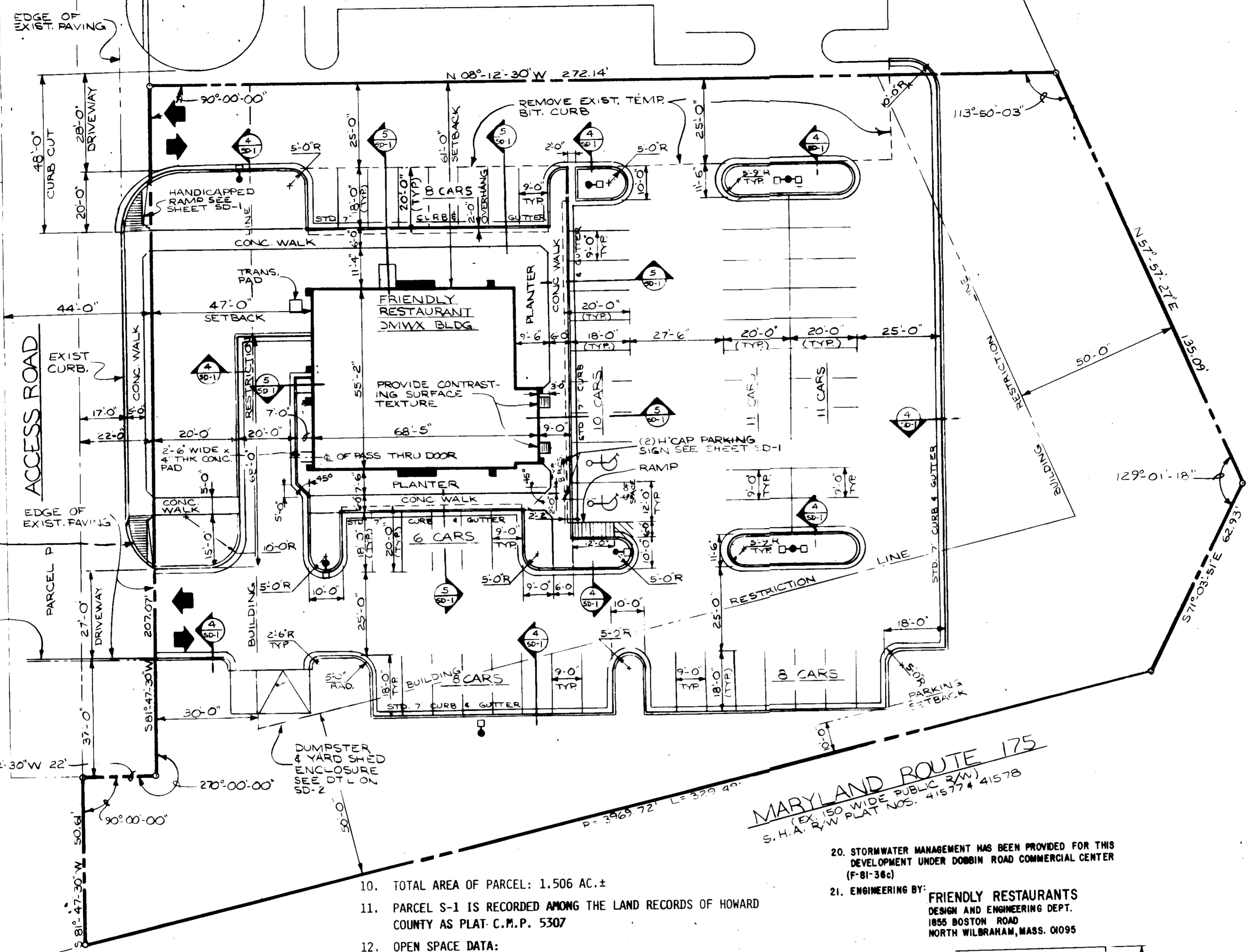
DOBBIN ROAD COMMERCIAL CENTER
SECTION 1 AREA 1
P.B. NO. C.M.P. 5031
ZONED: NEW TOWN (COMMERCIAL)

PARCEL L-1
PARCEL M-1

ACCESS ROAD

HANDICAPPED RAMP
SEE SHEET SD-1

EXIST. CURB



NAME	DATE	REVISION
MSP	5/93	ADDED H-CAP PARKING SIGN
D.O.#	6/10/83	RELOC (2) LT. POLES
MSP	7/21/83	REVISED CURB, DUMPSTER LOCATION REQUIREMENTS, & KEY PLAN, ADDED NOTES 10 - 19, APPROVAL BLOCK & ELEVATION PROFILE
MSP	7/30/83	ADDED 46" FLARE ON SIDEWALKS @ SOUTH PROPERTY LINE
DD	7/10/83	ADDED PIERS AT PORTICO
MS	8/12/83	RELOC DUMPSTER, LHT & POLE LOC ON SW DRIVEWAY, REVISED PLANTER NW OF BLDG FROM 6'-0" TO 2'-0", SDP 84 TO SDP 83-224, NOTE #5 PARKING AS SHOWN WAS BE RELOC INTO POLE N.E. OF BLDG.

APPROVED: DEPARTMENT OF PUBLIC WORKS.
FOR PUBLIC WATER AND SEWER AND STORM DRAINAGE SYSTEMS AND ROADS.

John F. Neman 9-9-83
DIRECTOR OF PUBLIC WORKS DATE

William J. Ryan 9-9-83
CHIEF, BUREAU OF ENGINEERING DATE

APPROVED: OFFICE OF PLANNING AND ZONING

William J. Ryan 9-15-83
PLANNING DIRECTOR DATE

William J. Ryan 9-15-83
CHIEF, DIVISION OF LAND DEVELOPMENT AND ZONING ADMINISTRATION DATE

APPROVED: HOWARD COUNTY HEALTH DEPARTMENT.
FOR PUBLIC WATER AND SEWERAGE SYSTEMS.

Joseph P. Lewis 9-13-83
HEALTH OFFICER DATE

DOBBIN ROAD
(EX 100 WIDE PUBLIC R/W)
P.B. 25, F. 40

LEGEND

- PARKING LOT LIGHT ON POLE (SEE DETAIL ON DWG. #SU-1)
- CONCRETE CURB & GUTTER - SEE SHEET SD-1

SUBDIVISION NAME		SECT./AREA	LOT/PARCEL NO.
DOBBIN ROAD COMMERCIAL CENTER		1 / 1	S. 1
PLAT NO. OR L/F	BLOCK NO. ZONE	TAX/ZONE MAP	ELEC. DIST. CENSUS TR.
5307	18 N.T./COMM.	6th	6065.02
WATER CODE		SEWER CODE	
1806		5333000	

LOT NO.	STREET ADDRESS
S-1	6375 DOBBIN ROAD

APPROVED: PLANNING AND ENGINEERING DEPT.
DATE: 8-10-83

M. Przybylowicz

SA-1

TITLE: COLUMBIA DOBBIN RD. COMMERCIAL CTR SECTION 1 AREA 1 PARCEL S-1 6 TH ELECTION DISTRICT HOWARD CO., MD.

SITE ARCHITECTURAL PLAN

SHOP NO. 829 DATE 4-11-83

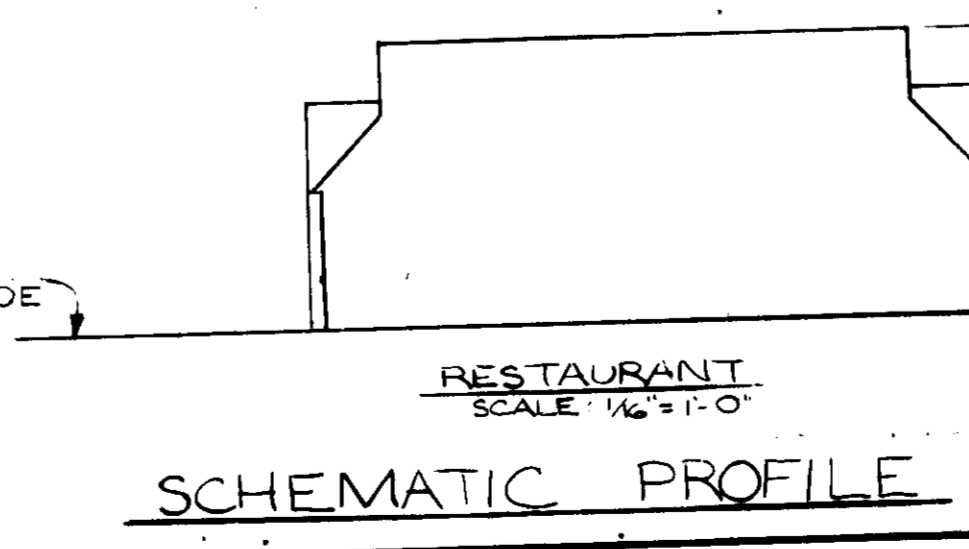
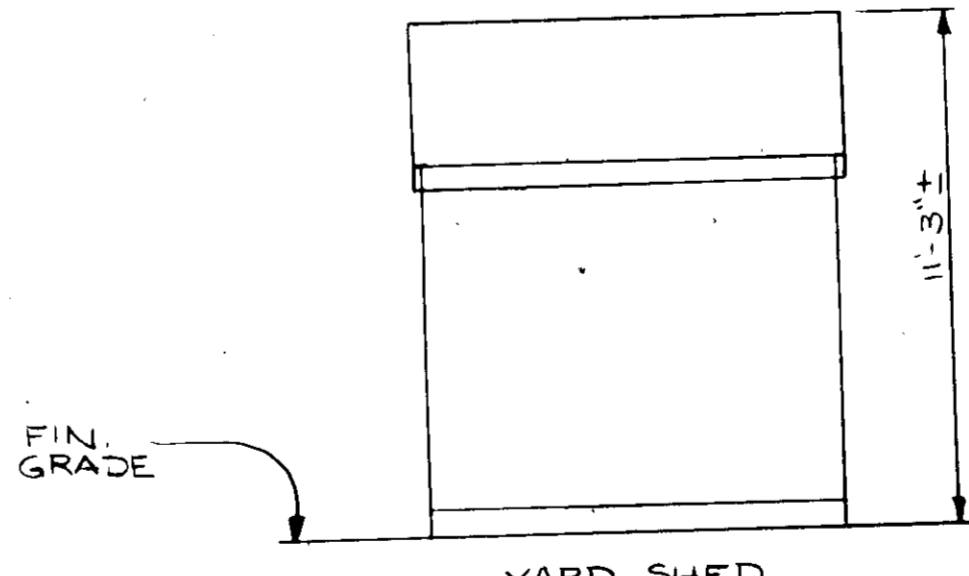
NAME: M. PRZYBYLOWICZ
SCALE: 1" = 20'-0" SHEET: 1 OF 7
CR BY M. PRZYBYLOWICZ 4/30/83
OWNER & DEVELOPER

Friendly restaurants
NORTH WILBRAHAM MASSACHUSETTS
(ROUTE 20 EAST OF SPRINGFIELD)
TEL. SPRINGFIELD 643-2400

YARD REQUIREMENTS		SITE DATA	
FRONT	30'-0"	BUILDING	3,460 SQ.FT.
SIDE	0	PLOT (TOTAL)	65,601 SQ.FT.
SIDE	50'-0"	PLOT (DVL.P.)	65,601 SQ.FT.
REAR	50'-0"	PLOT (PAVED)	32,204 SQ.FT.
		PARKING	62 CARS

20. STORMWATER MANAGEMENT HAS BEEN PROVIDED FOR THIS DEVELOPMENT UNDER DOBBIN ROAD COMMERCIAL CENTER (F-81-384)

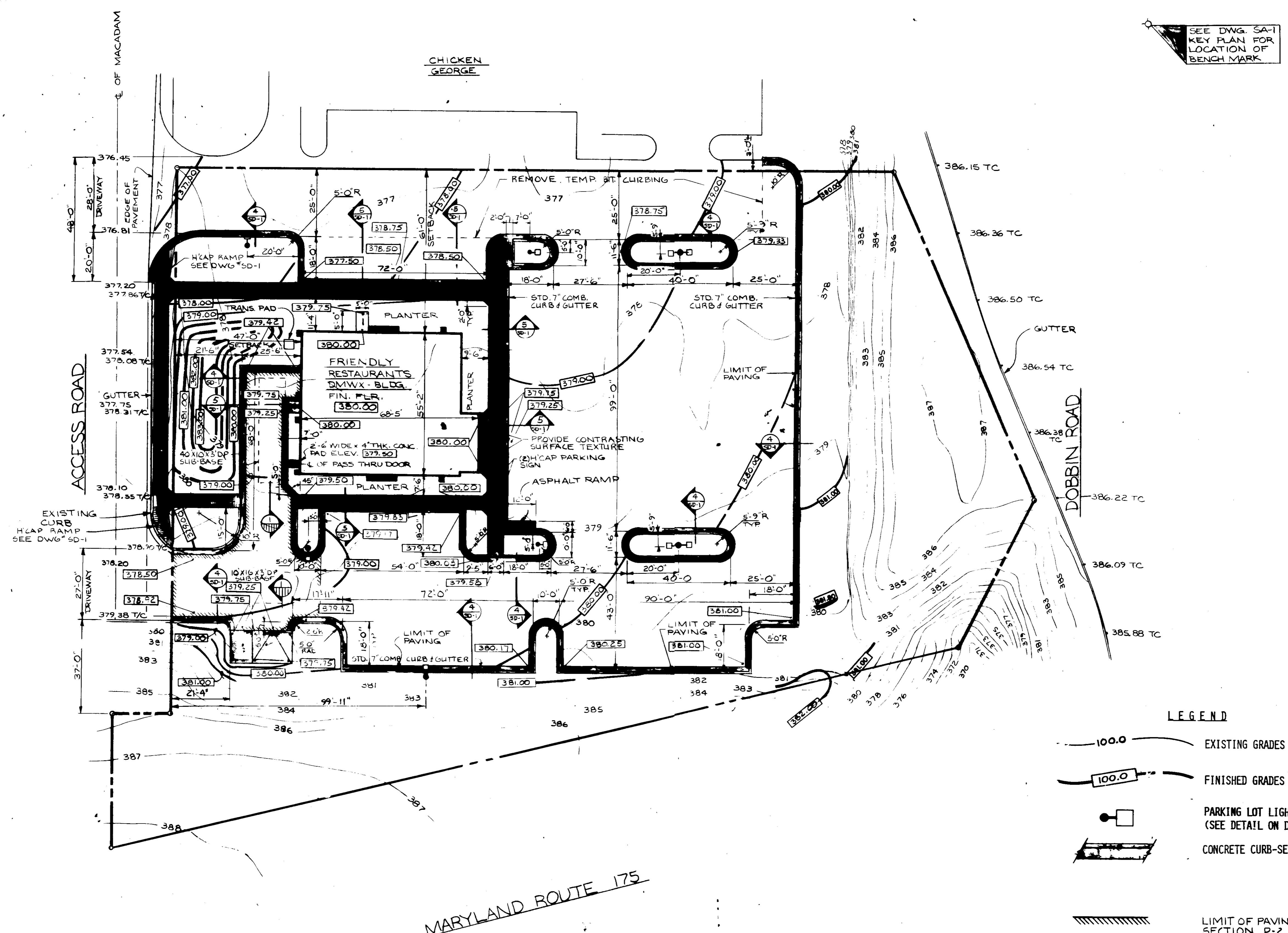
21. ENGINEERING BY: FRIENDLY RESTAURANTS
DESIGN AND ENGINEERING DEPT.
1855 BOSTON ROAD
NORTH WILBRAHAM, MASS. 01095



NOTES:

- ALL EXISTING BUILDINGS, TREES, SHRUBS, SIGNS, FENCES, DEBRIS, ETC. TO BE REMOVED FROM SITE UNLESS OTHERWISE NOTED.
- ANY OFF-SITE LAND DISTURBANCE CAUSED BY SITE CONTRACTOR TO BE RESTORED TO ITS ORIGINAL CONDITION (BY SITE CONTRACTOR).
- SEE DWG.:
A) 39E ELECTRICAL LIGHTING & CEILING PLAN
B) 45E ELECTRICAL DETAILS
C) 43E ELECTRICAL PANEL BOARD SCHEDULES
D) SG-1 SITE GRADING PLAN
E) SU-1 SITE UTILITIES PLAN
F) L-1 LANDSCAPE PLAN
G) SD-1 SITE PLAN DETAILS
H) SD-2 SITE PLAN DETAILS
I) SD-3 SITE CONCRETE DETAILS
- SIGN REQUIREMENTS:
FREE-STANDING SIGN NOT PERMITTED.
- PARKING REQUIREMENTS:
1 SPACE PER 4 SEATS OF SALES AREA
123 SEATS ÷ 4 = 30.75 CARS - USE 31 CARS
1 SPACE PER 200 SQ. FT. OF BUILDING AREA
3460 SQ. FT. ÷ 200 = 17.3 CARS - USE 17
31 + 17 = 48 CARS REQUIRED
62 CARS TOTAL PARKING SHOWN
- SURVEY:
DONE BY - FISHER, COLLINS AND CARTER, INC.
CIVIL ENGINEERS AND LAND SURVEYORS
8388 COURT AVENUE
ELLCOTT CITY, MD. 21043
TELEPHONE NO. (301)461-7885
- ZONING:
NT. COMM. (NEW TOWN-COMMERCIAL)
- LOT INFORMATION:
TAX MAP 36, PARCEL S-1 OF P/O PARCEL 372
- BENCH MARK #4-E1.375.29 CUT IN BONNET BOLT OF FIRE HYDRANT LOCATED ON THE WESTERN SIDE OF DOBBIN ROAD, 150' NORTH OF ENTRANCE TO HOME IMPROVEMENT CENTER.

- TOTAL AREA OF PARCEL: 1.506 AC.±
- PARCEL S-1 IS RECORDED AMONG THE LAND RECORDS OF HOWARD COUNTY AS PLAT: C.M.P. 5307
- OPEN SPACE DATA:
A. OPEN SPACE REQUIRED: PER F.D.P. CRITERIA - SEE FDP 132-A-1 RECORDED IN P.B. 3054A, F280-284.
B. OPEN SPACE PROVIDED (GREEN AREA): 0.68 ACRES, 45%.
- THE CONTRACTOR SHALL NOTIFY THE HOWARD COUNTY CONSTRUCTION INSPECTION/SURVEY DIVISION 24 HOURS PRIOR TO COMMENCEMENT OF WORK AT 792-7272.
- HANDICAPPED FACILITIES TO BE CONSTRUCTED IN ACCORDANCE WITH THE "DESIGN OF BARRIER FREE FACILITIES" AND THE "MARYLAND BUILDING CODE FOR THE HANDICAPPED AND AGED".
- ALL CONSTRUCTION SHALL BE IN ACCORDANCE WITH THE HOWARD COUNTY DESIGN MANUAL VOLUME IV.
- EXISTING UTILITIES SHOWN HEREON HAVE BEEN LOCATED FROM FIELD AND OFFICE INFORMATION. THE CONTRACTOR SHALL DETERMINE THE EXACT LOCATION OF EXISTING UTILITIES TO HIS OWN SATISFACTION BEFORE MAKING ANY CONNECTION THERETO OR EXCAVATING IN THE AREA THEREOF.
- THE CONTRACTOR SHALL NOTIFY MISS UTILITY AT 559-0100 A MINIMUM OF THREE DAYS PRIOR TO BEGINNING ANY CONSTRUCTION SHOWN HEREON.
- LIGHTING -- ALL EXTERIOR LIGHTING SHALL BE DIRECTED/ REFLECTED AWAY FROM ADJACENT RESIDENTIALLY ZONED PROPERTIES AND PUBLIC RIGHT-OF-WAYS.
- BUILDING USE -- FAMILY RESTAURANT
BUILDING COVERAGE: 3460 SQUARE FEET 6%



SEE DWG. SA-KEY PLAN FOR LOCATION OF BENCH MARK

NAME	DATE	REVISION
MSP	3/2/83	ADDED H-CAP PARKING SIGN
DD	6/10/83	RELOC'D (2) LT. POLES
MS	6/1/83	RVSD GRADING ON SITE. CURBING, LOC. OF DUMPSTER. # OF CARS WAS 65. PLOT PAVED WAS 32,600 SQ. YARD REQ. FRONT WAS 50', SIDE WAS 30'. PAYING SPEC. ADDRESS OF SHOP IN TITLE BOX, ADD. H-CAP RAMP ON SIDE WALK, SIGNATURE BLOCK, DEL'D C&A DRAIN TRENCH, RELOC'D H-CAP SIGNS
MSP	4/24/83	RVSD BERM BEHIND BUILDING
DD	7/18/83	ADDED PIERS AT PORTICO
MS	8/12/83	RELOC'D DUMPSTER, LHT. POLE OF S.W. DRIVEWAY, RVSD OPNG. IN PLANTER N.W. OF BLDG. FROM 5'-0" TO 2'-0". SDP-84 TO SDP-83-224C. GRAD'G IN REAR LOT, RELOC'D LHT. POLE ON N.E. OF BLDG.

APPROVED: DEPARTMENT OF PUBLIC WORKS. FOR PUBLIC WATER AND SEWER AND STORM DRAINAGE SYSTEMS AND ROADS.

Walter E. Nemeyer 7-1-83
DIRECTOR, PUBLIC WORKS DATE

William E. Zay 9-2-83
CHIEF, BUREAU OF ENGINEERING DATE

APPROVED: OFFICE OF PLANNING AND ZONING

Thomas J. Amadio 9-15-83
PLANNING DIRECTOR DATE

John J. Williams 9-15-83
CHIEF, DIVISION OF LAND DEVELOPMENT AND ZONING ADMINISTRATION DATE

APPROVED: HOWARD COUNTY HEALTH DEPARTMENT. FOR PUBLIC WATER AND SEWERAGE SYSTEMS.

Joseph P. ... 9-15-83
HEALTH OFFICER DATE

APPROVED PLANNING BOARD OF HOWARD COUNTY

DATE 8-10-83

M. ...

DWG# SG-1

STAMP: STATE OF MARYLAND PROFESSIONAL ENGINEER

Robert A. ...

TITLE: COLUMBIA DOBBIN ROAD COMMERCIAL CENTER SECTION 1 AREA 1 PARCEL 5-1.6TH ELECT. DISTRICT, HOWARD CO., MD.

SITE GRADING PLAN

SHOP NO. 829 DATE 4-11-83

NAME: M. PRZYBYLOWICZ

SCALE: 1" = 20'-0" SHEET 2 OF 7

CH. BY M. PRZYBYLOWICZ 6/30/83

OWNER & DEVELOPER

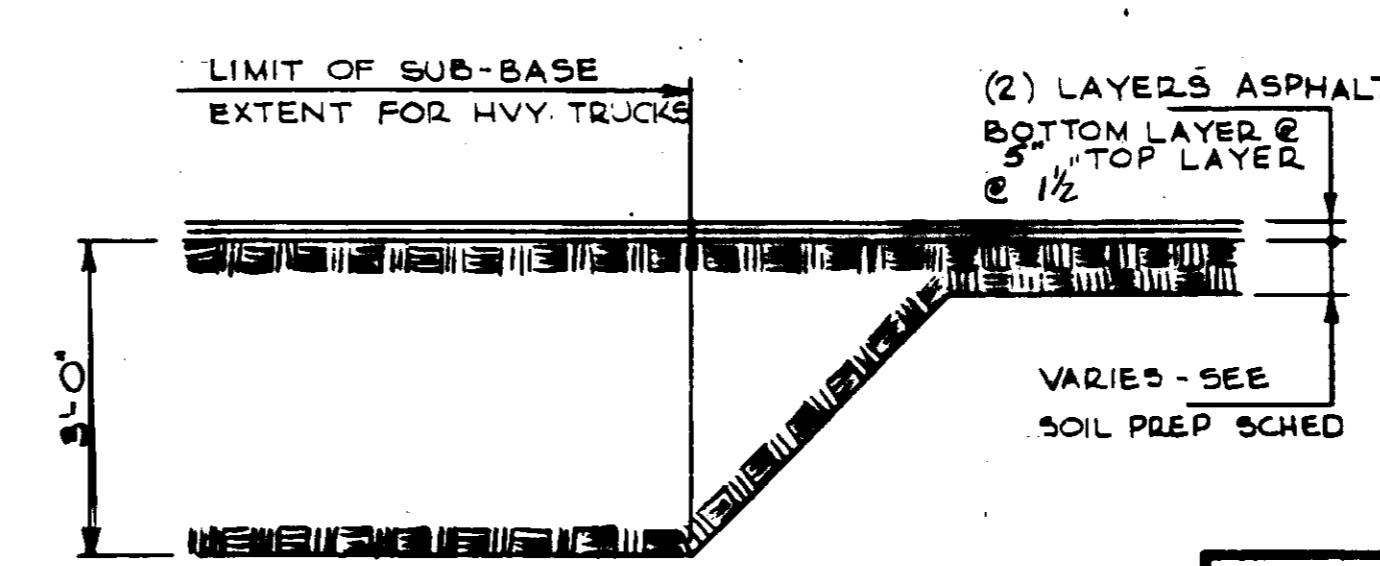
YARD REQUIREMENTS		SITE DATA	
FRONT	30'-0"	BUILDING	3,460 SQ.FT.
SIDE	0	PLOT (TOTAL)	65,601 SQ.FT.
SIDE	50'-0"	PLOT (D.V.L.P.)	65,601 SQ.FT.
REAR	50'-0"	PLOT (PAVED)	32,204 SQ.FT.
		PARKING	62 CARS

Friendly restaurants

NORTH WILBORHAM MASSACHUSETTS
(ROUTE 26 EAST OF SPRINGFIELD)
TEL. SPRINGFIELD 643-2400

LEGEND

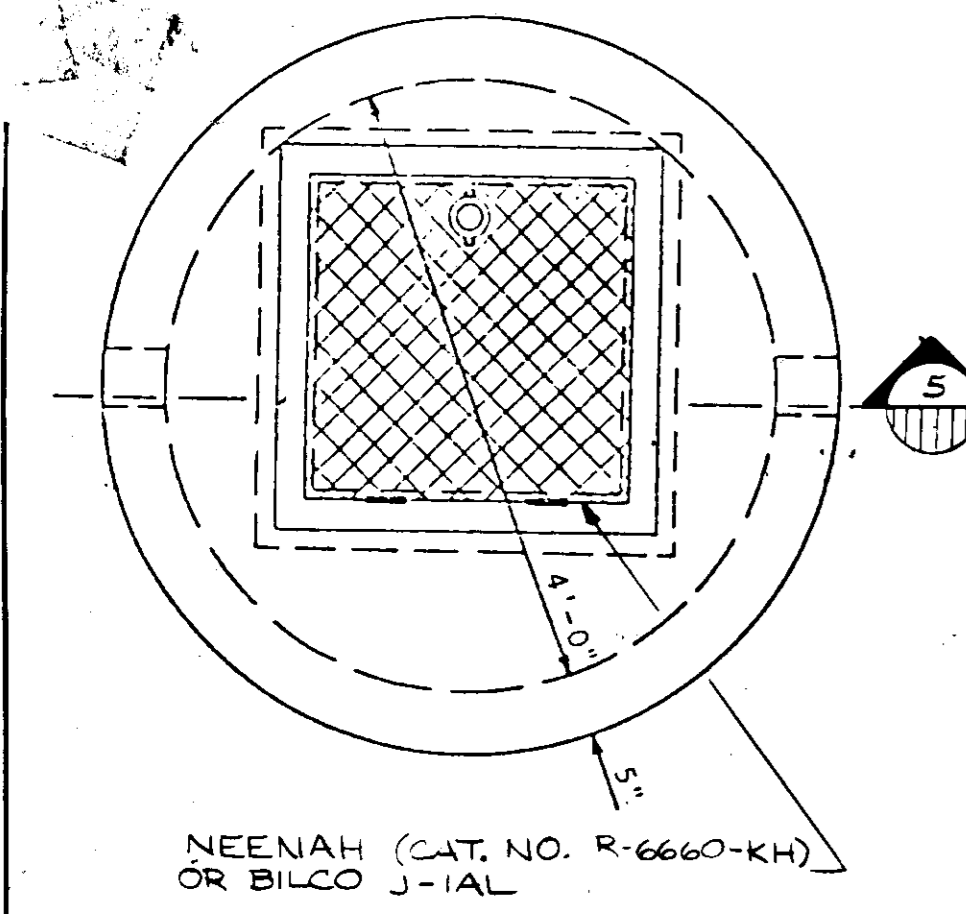
- 100.0 EXISTING GRADES
- 100.0 FINISHED GRADES
- PARKING LOT LIGHT ON POLE (SEE DETAIL ON DWG. #SU-1)
- CONCRETE CURB-SEE DWG. #SD-3
- LIMIT OF PAVING SECTION P-2



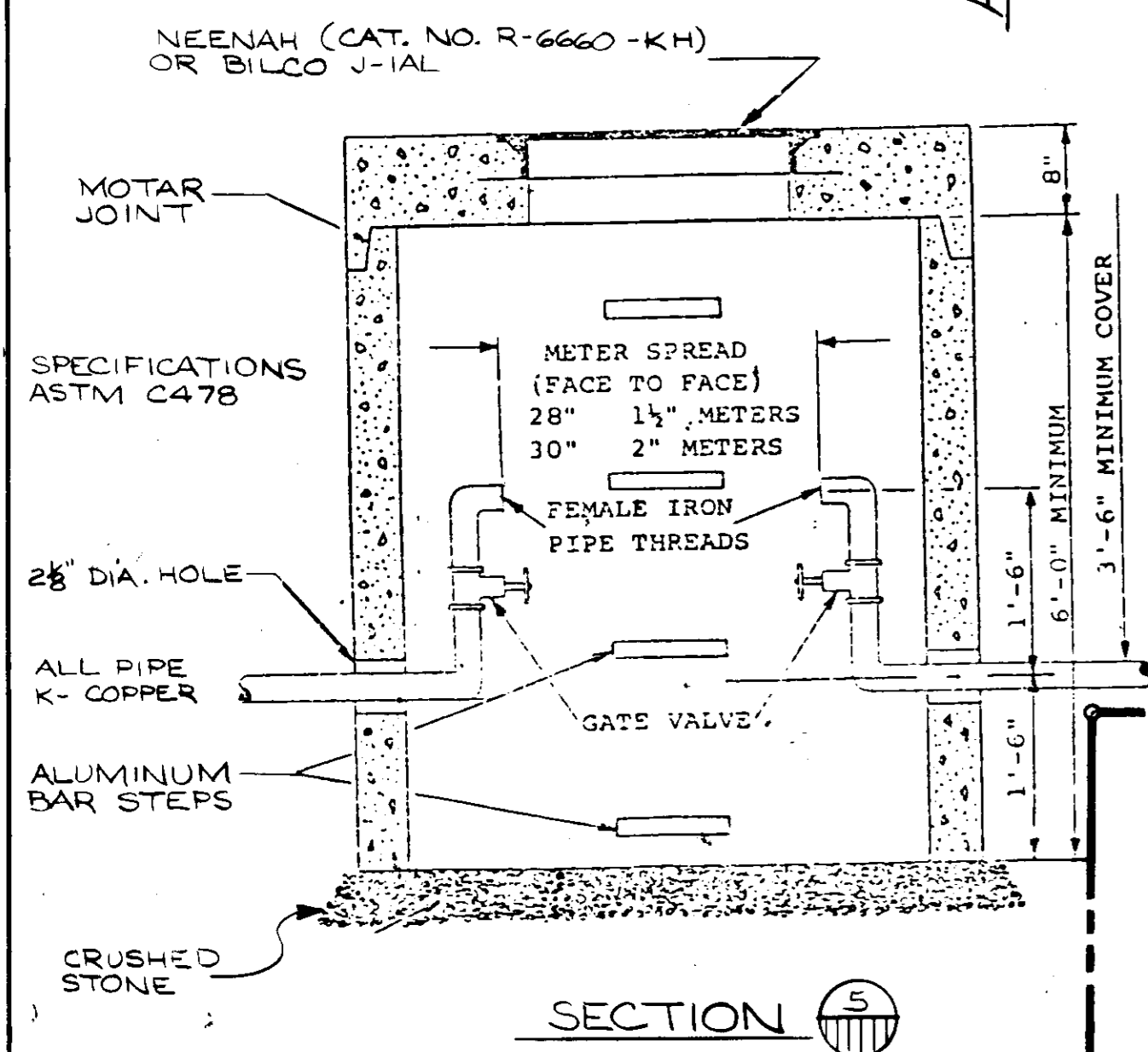
SECTION NO SCALE

SECT. NO.	ROAD AND STREET CLASSIFICATION	PAVEMENT MATERIALS	
		FULL DEPTH BIT. CONC. ALTERNATE	GRANULAR BASE ALTERNATE
P-1	PARKING AREAS AND TRAVELWAYS APARTMENTS AND COMMERCIAL-INDUSTRIAL ZONES WITH NO HEAVY TRUCKS	1" BIT. CONC. SURFACE 4" BIT. CONC. BASE	1" BIT. CONC. SURFACE 2" BIT. CONC. BASE PRIME 5" CRUSHER RUN BASE COURSE OR 4" DENSE GRADED STABILIZED AGGREGATE BASE COURSE
P-2	RESIDENTIAL ZONES LOCAL, CUL-DE-SAC STS., ALLEYS AND PRIVATE ROADS SERVING INDIVIDUAL LOTS PARKING AREAS APARTMENTS AND COMMERCIAL-INDUSTRIAL ZONES WITH NO MORE THAN 10 HEAVY TRUCKS PER DAY	1 1/2" BIT. CONC. SURFACE 5" BIT. CONC. BASE	1 1/2" BIT. CONC. SURFACE 2 1/2" BIT. CONC. BASE PRIME 8" CRUSHER RUN BASE COURSE (2 COURSES) OR 6" DENSE GRADED STABILIZED AGGREGATE BASE COURSE

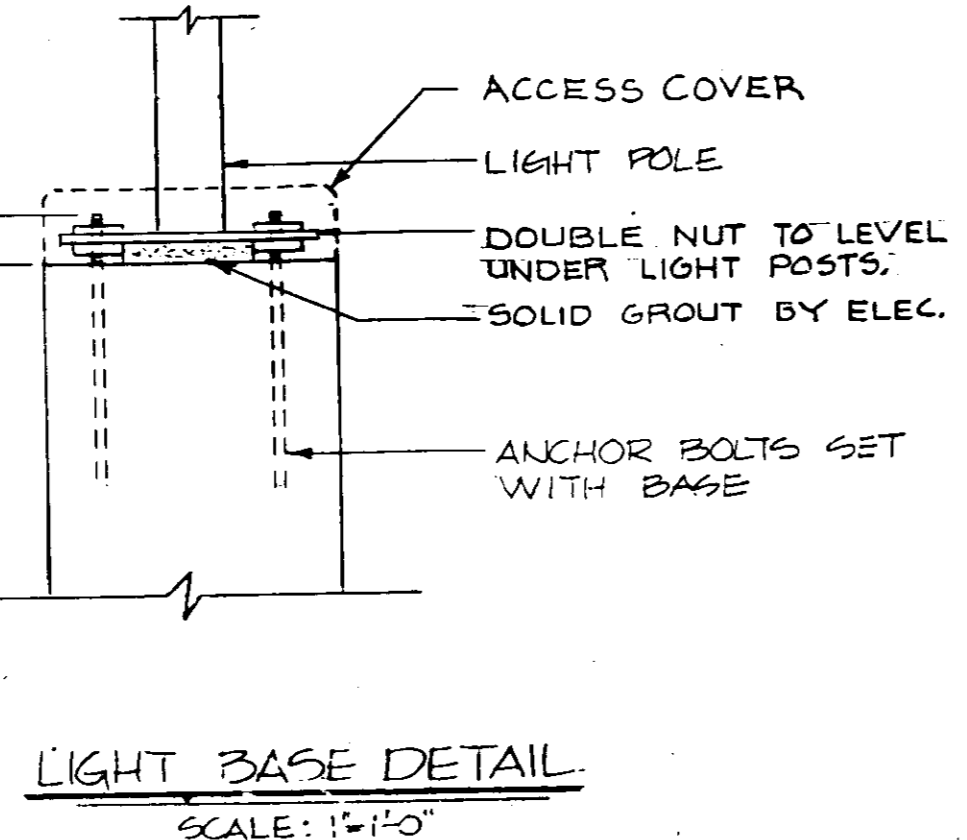
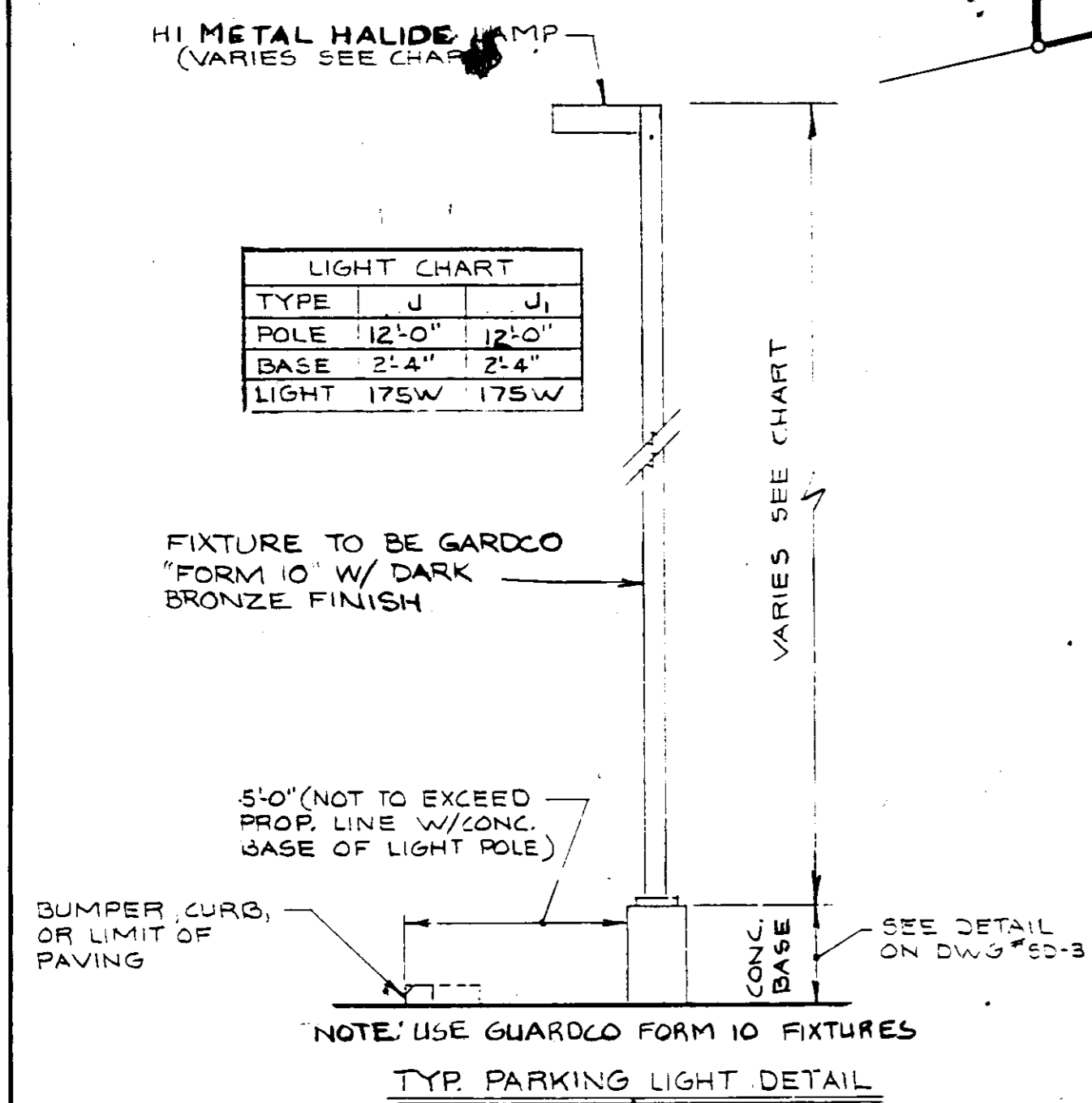
MARYLAND ROUTE 175



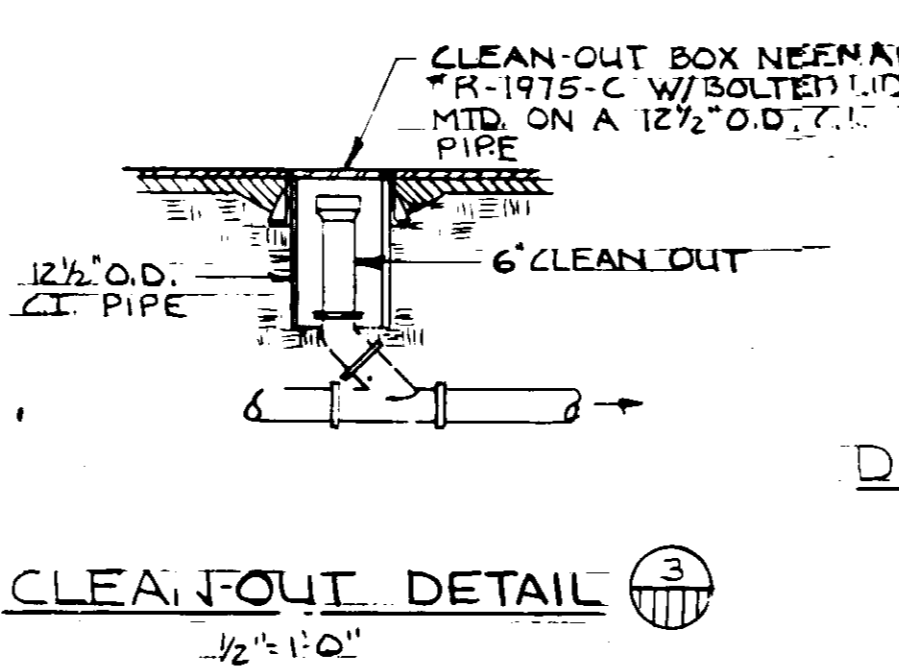
PRECAST WATER METER PIT



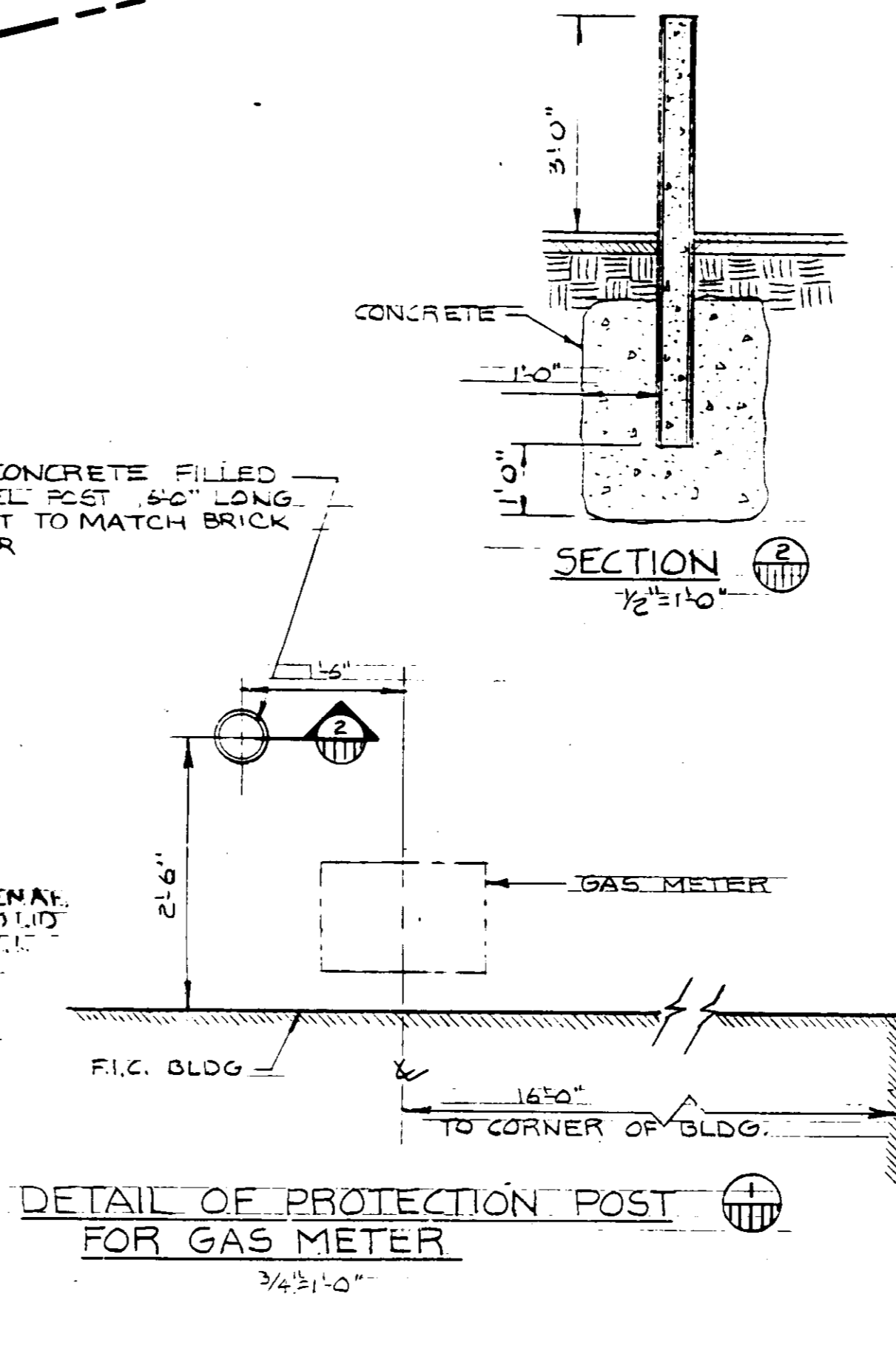
SECTION 5



LIGHT BASE DETAIL SCALE: 1/2"=1'-0"



CLEAN-OUT DETAIL SCALE: 1/2"=1'-0"



DETAIL OF PROTECTION POST FOR GAS METER SCALE: 3/4"=1'-0"

LEGEND

- (D)--- NEW STORM DRAIN
- (D)--- EXISTING STORM DRAIN
- (S)--- NEW SEWER LINE
- (S)--- EXISTING SEWER LINE
- (E)--- NEW ELECTRIC LINE
- (E)--- EXISTING ELECTRIC LINE
- (T)--- NEW TELEPHONE LINE
- (T)--- EXISTING TELEPHONE LINE
- (W)--- NEW WATER LINE
- (W)--- EXISTING WATER LINE
- (G)--- NEW GAS LINE
- (G)--- EXISTING GAS LINE

SEE DWG. SA-1 KEY PLAN FOR LOCATION OF BENCH MARK

SYMBOLS

- PARKING LOT LIGHT ON POLE (SEE DETAILS ON SU-1)
- CONC. CURB & GUTTER (SEE DWG. SD-1 FOR DETAILS)

NOTES:

1. REFER TO GRADING PLAN FOR SURFACE ELEVATIONS (EXISTING & NEW)
2. REFER TO SITE ARCHITECTURAL PLAN FOR LOCATION AND SIZES OF NEW CONSTRUCTION
3. PARKING LIGHTS SHALL BE DIRECTIONAL AND SHIELDED
4. SEE DWG.
 - A) 38E ELECTRICAL LIGHTING & CEILING PLAN
 - B) 44E ELECTRICAL DETAILS
 - C) 42E ELECTRICAL LOAD CENTER SCHEDULES
5. 4" PLASTIC PIPE CHASE UNDERGROUND; SEE DWG.#SD-1 FOR DETAIL OF LAWN IRRIGATION CHASE
6. DOWNSPOUT TYP (6) PLACES, SEE DWG.#12 FOR LOCATION AND DWG. #SD-1 FOR DETAIL
7. ALL LIGHTING FIXTURES SHALL BE GUARDCO FORM 10 FIXTURES.

NAME	DATE	REVISION
DDA	6/10/83	RELOC'D (2) LT. POLES
MSP	9/2/83	RVSD CURB, DUMPSTER LOC. YARD REQUIREMENTS ADDED APPROVAL BLOCK
MSP	9/2/83	PAINTED STEEL POST N DETAIL, LIGHT DETAIL RVSD MANUFACTURERS
DD	7/18/83	RVSD NOTE 6 WAS DWG 13 & ADDED PIERS AT PORTICO
MS	8/2/83	RELOC'D DUMPSTER, LHT POLE ON S.W. ENTRANCE, RVSD OPNG IN PLANTED R/W OF BLDG., SDP 8A TO SDP 83-224C LOC. OF WTR. MTR. PIT, WTR. LINE. ADD. NOTE #74 NOTE TO TYP PARK'G. LHT DTL, RELOC'D. LHT. & POLE N.E. OF BLDG.

APPROVED: DEPARTMENT OF PUBLIC WORKS, FOR PUBLIC WATER AND SEWER AND STORM DRAINAGE SYSTEMS AND ROADS.

Henry F. Nemmer 9-9-83
DIRECTOR, PUBLIC WORKS DATE

William A. Deary 9-9-83
CHIEF, BUREAU OF ENGINEERING DATE

APPROVED: OFFICE OF PLANNING AND ZONING
James L. Hanig 9-15-83
PLANNING DIRECTOR DATE

John W. Williams 9-15-83
CHIEF, DIVISION OF LAND DEVELOPMENT AND ZONING ADMINISTRATION DATE

APPROVED: HOWARD COUNTY HEALTH DEPARTMENT, FOR PUBLIC WATER AND SEWERAGE SYSTEMS.
James E. ... 9-13-83
HEALTH OFFICER DATE

APPROVED
PLANNING BOARD
OF HOWARD COUNTY
DATE 8-10-83
M. Przybylowicz

DWG# SU-1 STAMP
SITE OF MARYLAND
PROFESSIONAL ENGINEER
Robert ...

COLUMBIA
DOBBIN RD. COMMERCIAL CTR
SECTION I AREA I
PARCEL S-1
6 TH ELECTION
DISTRICT HOWARD CO., MD.

SITE UTILITIES PLAN

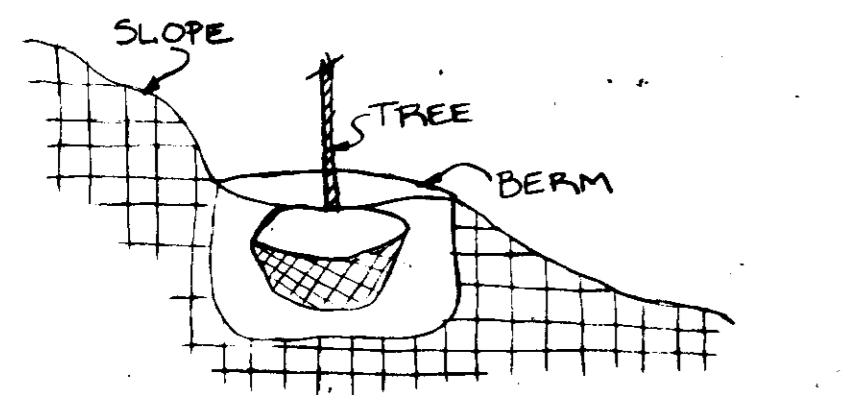
SHOP NO. 829 DATE 4-11-83

NAME: M. PRZYBYLOWICZ
SCALE: 1"=20'-0" SHEET 3 OF 7

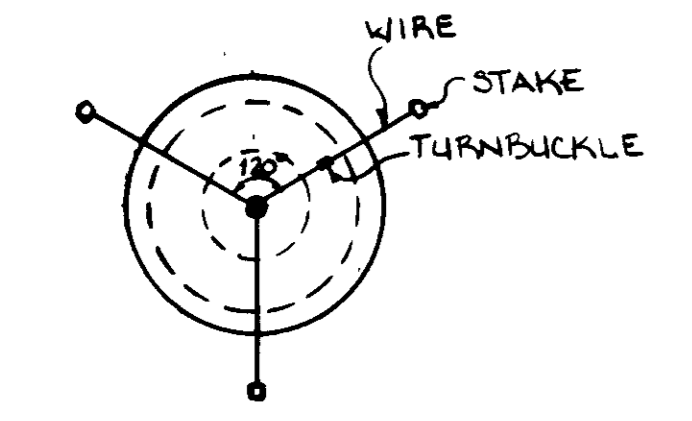
CH. BY M. PRZYBYLOWICZ 6/30/83
OWNER & DEVELOPER
Friendly restaurants
NORTH WILBORHAM MASSACHUSETTS
(ROUTE 20 EAST OF SPRINGFIELD)
TEL. SPRINGFIELD 643-2400

YARD REQUIREMENTS		SITE DATA	
FRONT	30'-0"	BUILDING	3,460 SQ.FT.
SIDE	0	PLOT (TOTAL)	65,601 SQ.FT.
SIDE	50'-0"	PLOT (DWLP.)	65,601 SQ.FT.
REAR	50'-0"	PLOT (PAVED)	32,204 SQ.FT.
		PARKING	62 CARS

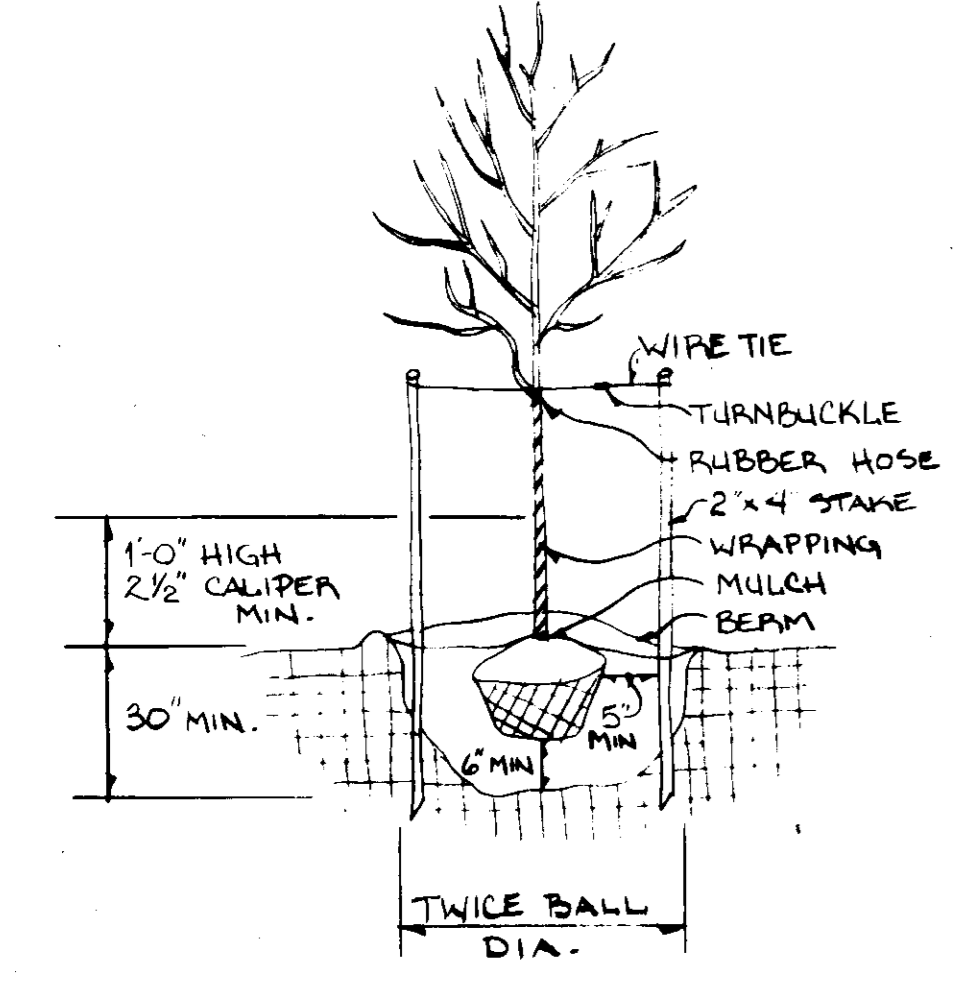
NAME	DATE	REVISION
DD	6/10/83	RELOC (2) LT. POLES
MP	6/17/83	ADDED CURBING, TREE PLT. DETAILS, NOTE #3, RELOCATE (2) ITEMS, ADDED (6) ITEM #12 AT (4) PLANTERS QTY. ITEM #12 WAS (18)
MSP	6/28/83	RVSD. LOCATION OF 2 TREES, ADDED NOTE 10
DD	7/8/83	ADDED PIERS AT PORTICO
MS	8/12/83	RELOC DUMPSTER, (2) PARK'G LOT'LTS. RVSD. OPNG AT PLANTER N.W. OF BLDG. SDR-83-224C, ITEM #12 QTY WAS 41; RELOC. SOME PLANTS



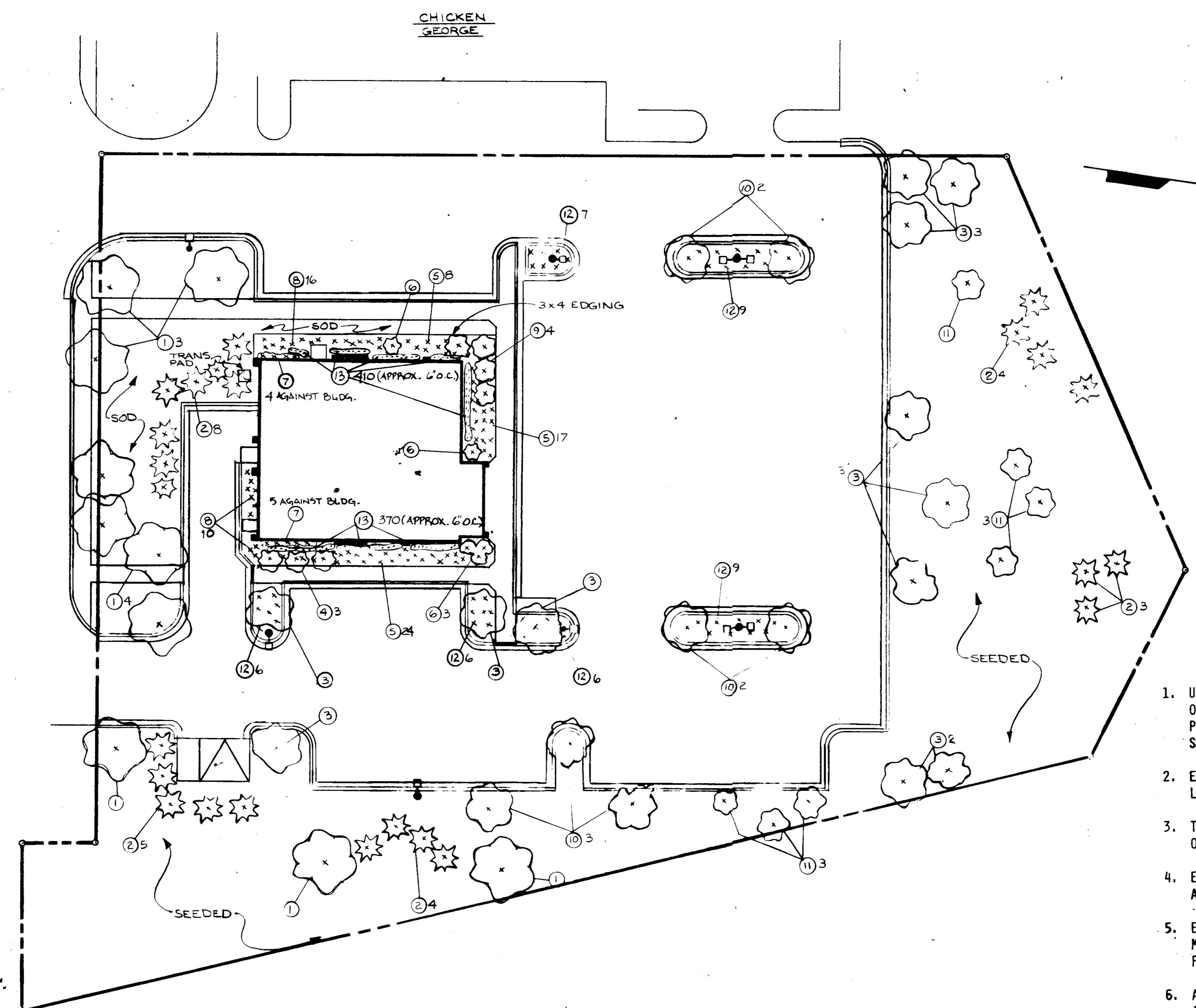
GRADING FOR PLANTING ON SLOPES



STAKING DETAIL



NOTE: REMOVE BURLAP FROM TOP 1/3 OF BALL. TREE PLANTING



APPROVED: DEPARTMENT OF PUBLIC WORKS FOR PUBLIC WATER AND SEWER AND STORM DRAINAGE SYSTEMS AND ROADS.

John F. Neumeier 9-9-83
DIRECTOR, PUBLIC WORKS DATE

Thomas P. ... 9-9-83
CHIEF, BUREAU OF ENGINEERING DATE

APPROVED: OFFICE OF PLANNING AND ZONING

Thomas M. ... 9-15-83
PLANNING DIRECTOR DATE

Carl ... 9-15-83
CHIEF, DIVISION OF LAND DEVELOPMENT AND ZONING ADMINISTRATION DATE

APPROVED: HOWARD COUNTY HEALTH DEPARTMENT FOR PUBLIC WATER AND SEWERAGE SYSTEMS.

James ... 9-13-83
HEALTH OFFICER DATE

NOTES

- UNLESS OTHERWISE SPECIFIED, ALL PLANTER AREAS WHERE NO CURB OCCURS TO BE EDGED WITH 3 x 4 LONGLEAF YELLOW PINE - PRESSURE TREATED (OSMOSE). (APPROX. 90 FT. REQUIRED) SEE DETAIL "A".
- EXCEPT AS NOTED: ALL PLANTERS TO RECEIVE 3" MIN. TO 4" MAX. LAYER OF BARK NUGGETS (SIZE 3/4" - 1").
- TOP SOIL TO BE PROVIDED BY OTHERS IN ROUGH GRADE (WITHIN 1" OF FINISH GRADE) FOR USE BY LANDSCAPING CONTRACTOR.
- EACH PLANT TO BE IN THE TOP OF ITS SIZE CLASS AFTER SHEARING AND PRUNING.
- EACH PLANT TO BE FREE FROM DISEASE, INSECT INFESTATION, AND MECHANICAL INJURIES, AND IN ALL RESPECTS BE SUITABLE FOR FIELD PLANTING.
- ALL PLANTS TO BE FULLY GUARANTEED (LABOR AND MATERIAL) FOR A PERIOD OF NOT LESS THAN ONE (1) YEAR FROM DATE OF INSTALLATION.
- SOD - A BLEND OF KENTUCKY BLUEGRASS AND FESCUE AS SUITED TO LOCAL CONDITIONS.
- PLANTS TO CONFORM TO THE AMERICAN STANDARD FOR NURSERY STOCK, ANSI Z60. 1-1973 IN REGARD TO SIZING, GROWING, AND B&B SPECIFICATIONS.
- SEEDING MIXTURE: 'MERION' KENTUCKY BLUE GRASS* @ 40 LBS/AC. COMMON KENTUCKY BLUE GRASS* @ 40 LBS/AC. RED FESCUE 'PENLAWN' OR 'JAMESTOWN' @ 20 LBS/AC. * USE CERTIFIED SEED ONLY. PREPARE SEED BEDS AS SPECIFIED IN SEDIMENT CONTROL NOTES. SEE SHEET 6 OF 7.
- ALL INSTALLATION TO BE PER DOBBIN CENTER PLANTING SPECS.

APPROVED: PLANNING BOARD OF HOWARD COUNTY

DATE 8-10-83

...

DWG# L-1

STAMP

STATE OF MARYLAND
PROFESSIONAL ENGINEER
...

TITLE

COLUMBIA
DOBBIN RD COMMERCIAL CENTER SECTION 1, AREA 1, PARCEL S-1, 6TH ELECTION DIST. HOWARD CO., MD.

LANDSCAPE PLAN

SHOP NO. 829 DATE 4-11-83

NAME: M. PRZYBYLOWICZ SCALE: 1" = 20'-0" SHEET 4 OF 7

CH. BY M. PRZYBYLOWICZ 6/30/83

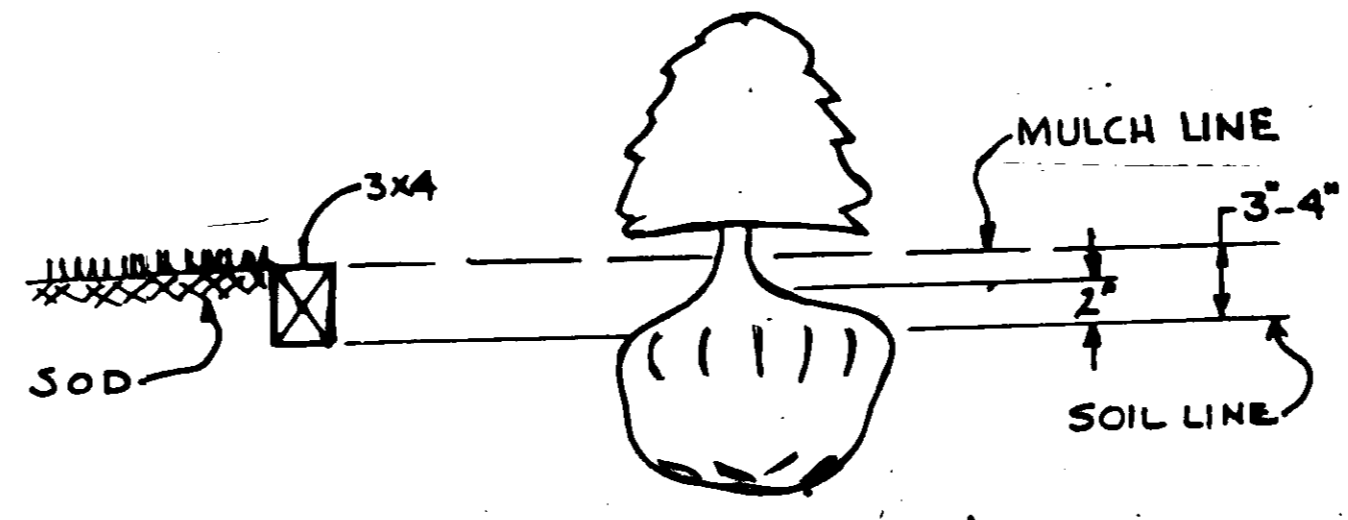
OWNER/DEVELOPER

Friendly restaurants

NORTH WILBORHAM MASSACHUSETTS (ROUTE 28 EAST OF SPRINGFIELD) TEL. SPRINGFIELD 643-2400

KEY	QTY	BOTANICAL NAME	SIZE	COMMON NAME
1	10	QUERCUS PALUSTRIS	2 1/2" - 3" CAL. 18" HT.	PIN OAK
2	24	PINUS STROBUS	6" - 8"	WHITE PINE
3	12	FRAXINUS L. "MARSHALLS SEEDLESS"	2 1/2" - 3" CAL. 12" HT.	SEEDLESS GREEN ASH
4	3	MALUS ZUMI CALOCARPA	2 1/2" - 3" CAL. 8" - 10" HT.	ZUMI CRAB
5	46	PRUNUS L. "SCHIPKAENSIS MACROPHYLLA"	30" - 36"	BROADLEAF CHERRY - LAUREL
6	5	TSUGA CANADENSIS	6" - 8" HT.	CANADIAN HEMLOCK
7	9	PYRACANTHA C. "LALANDEI" (ESPALIER)	3' HT.	ORANGE LALAND FIRETHORN
8	26	PYRACANTHA C. "LOWBOY"	18" - 24" HT.	ORANGE LOWBOY FIRETHORN
9	4	PRUNUS S. KWANZAN	2 1/2" - 3" CAL. 8" - 10" HT.	KWANZAN JAPANESE CHERRY
10	7	PYRUS CALLERYANA "REDSPIRE"	2 1/2" - 3" CAL. 18" HT.	REDSPIRE PEAR
11	7	CRATAEGUS PHAENOPYRUM	2 1/2" - 3" CAL. 8" - 10" HT.	WASHINGTON HAWTHORN
12	43	JUNIPERUS DEPRESSA PLUMOSA	2" - 2 1/2"	ANDORRA JUNIPER
13	780	PACHYSANDRA TERMINALIS	1 1/2" POTTED	JAPANESE SPURGE

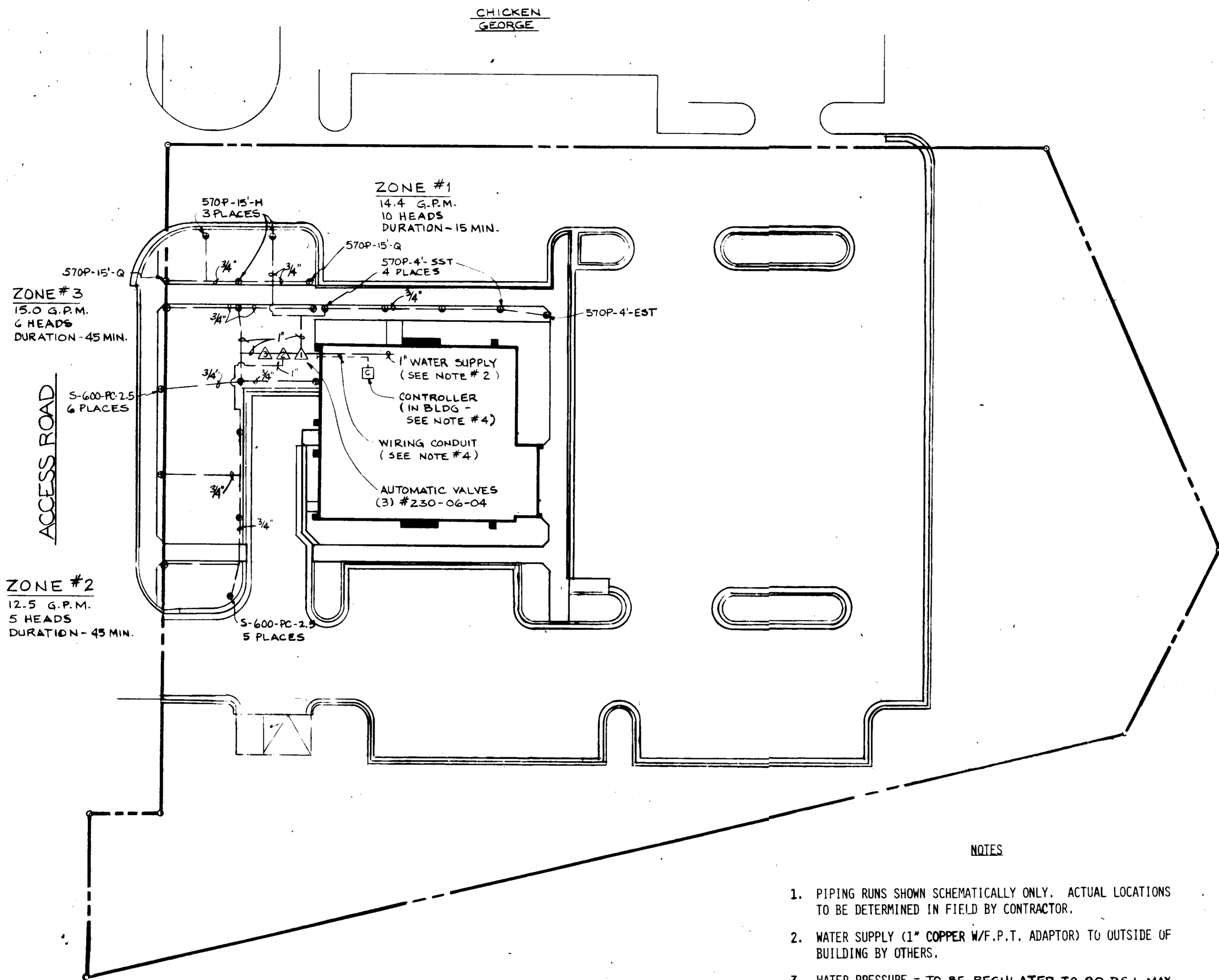
MARYLAND ROUTE 175



DETAIL 'A' NO SCALE

YARD REQUIREMENTS		SITE DATA	
FRONT	30'-0"	BUILDING	3,460 SQ.FT.
SIDE	0	PLOT (TOTAL)	65,601 SQ.FT.
SIDE	50'-0"	PLOT (DVL.P.)	65,601 SQ.FT.
REAR	50'-0"	PLOT (PAVED)	32,204 SQ.FT.
		PARKING	62 CARS

NAME	DATE	REVISION
KFF	6-17-83	ADDED CURBING, CHANGED TITLE BLOCK
MSP	9/30/83	RVSD. SIDEWALK AT SOUTH END OF LOT
DD	7/8/83	ADDED PIERS AT PORTICO
MS	8/12/83	RELOC'D DUMPSTER, RVSD OPNG. IN PLANTER SW. OF BLDG, SDP-84 TO SDP-82-224C



ZONE #3
15.0 G.P.M.
6 HEADS
DURATION - 45 MIN.

ZONE #2
12.5 G.P.M.
5 HEADS
DURATION - 45 MIN.

ZONE #1
14.4 G.P.M.
10 HEADS
DURATION - 15 MIN.

ACCESS ROAD

DOBBIN ROAD

MARYLAND ROUTE 175

CHICKEN GEORGE

APPROVED: DEPARTMENT OF PUBLIC WORKS.
FOR PUBLIC WATER AND SEWER AND STORM DRAINAGE SYSTEMS AND ROADS.

Thomas F. Neumeyer 9-9-83
DIRECTOR, PUBLIC WORKS DATE

John S. Ryan 9-9-83
CHIEF, BUREAU OF ENGINEERING DATE

APPROVED: OFFICE OF PLANNING AND ZONING

Thomas H. Harmon 9-15-83
PLANNING DIRECTOR DATE

John W. Shuman 9-15-83
CHIEF, DIVISION OF LAND DEVELOPMENT AND ZONING ADMINISTRATION DATE

APPROVED: HOWARD COUNTY HEALTH DEPARTMENT.
FOR PUBLIC WATER AND SEWERAGE SYSTEMS.

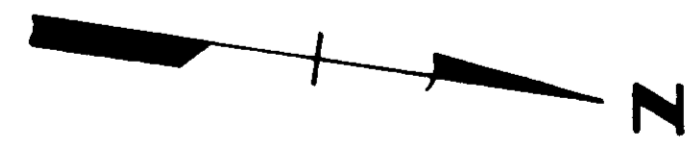
Joseph S. S. S. 9-15-83
HEALTH OFFICER DATE

NOTES

- PIPING RUNS SHOWN SCHEMATICALLY ONLY. ACTUAL LOCATIONS TO BE DETERMINED IN FIELD BY CONTRACTOR.
- WATER SUPPLY (1" COPPER W/F.P.T. ADAPTOR) TO OUTSIDE OF BUILDING BY OTHERS.
- WATER PRESSURE = TO BE REGULATED TO 80 P.S.I. MAX.
- CONTROLLER FURNISHED, INSTALLED, AND POWERED BY OTHERS (BATROW LABS H₂O AUTOMATIC CONTROLLER #907-2460 (24V AC). CONTRACTOR TO FURNISH AND INSTALL CONTROL WIRING FROM CONTROLLER TO AUTOMATIC VALVES. 1" CONDUIT FROM CONTROLLER TO OUTSIDE BUILDING BY OTHERS. PROPER SETTING AND SEQUENCING OF CONTROLLER BY CONTRACTOR. START SEQUENCE AT 2:00 A.M.
- CONNECTIONS AT SUPPLY AND VALVES TO BE DOUBLE CLAMPED. ALL OTHER CONNECTIONS SINGLE CLAMPED.
- BRASS AUTOMATIC DRAIN VALVES TO BE INSTALLED AT VALVE MANIFOLD.
- SYSTEM COMPONENTS TO BE INSTALLED IN ACCORDANCE WITH MANUFACTURER'S RECOMMENDATIONS AND CONSISTENT WITH STANDARD TRADE PRACTICES.
- MATERIALS**
 - ALL SPRINKLER HEADS AND AUTOMATIC VALVES TO BE TORO OR EQUIVALENT. TORO MODEL NUMBERS ARE INDICATED ON PLAN.
 - PIPE - POLYETHYLENE 100 P.S.I. RATED
 - FITTINGS - NYLON
 - CLAMPS - 100% STAINLESS STEEL
 - RISERS - GALVANIZED OR BRASS PIPE (NO PLASTIC PERMITTED)

SYMBOLS

- ⊕ SPRINKLER HEAD
- UNDERGROUND WATER SUPPLY
- △ AUTOMATIC VALVE (UNDERGROUND)
- IRRIGATION CONTROLLER



APPROVED
PLANNING BOARD
OF HOWARD COUNTY
DATE: 8-10-83
M. J. Miller

DWG# 1-1

STAMP: STATE OF MARYLAND, DEPARTMENT OF PUBLIC WORKS, PROFESSIONAL ENGINEER, No. 8378, W. K. HAYES

TITLE
COLUMBIA
DOBBIN RD. COMMERCIAL CENTER, SECTION 1, AREA 1, PARCEL S-1, 6TH ELECTION DIST. HOWARD CO., MD.

IRRIGATION PLAN

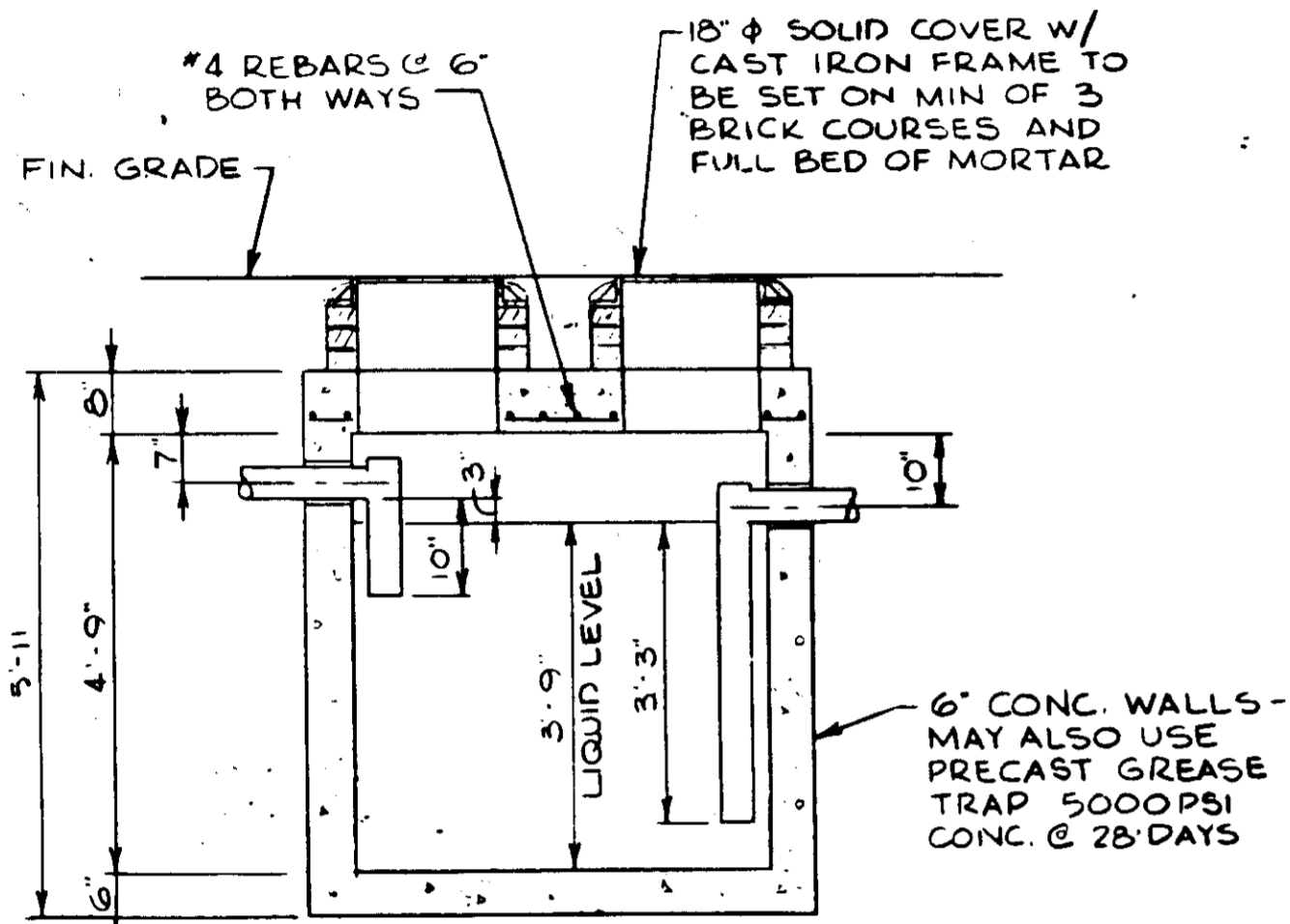
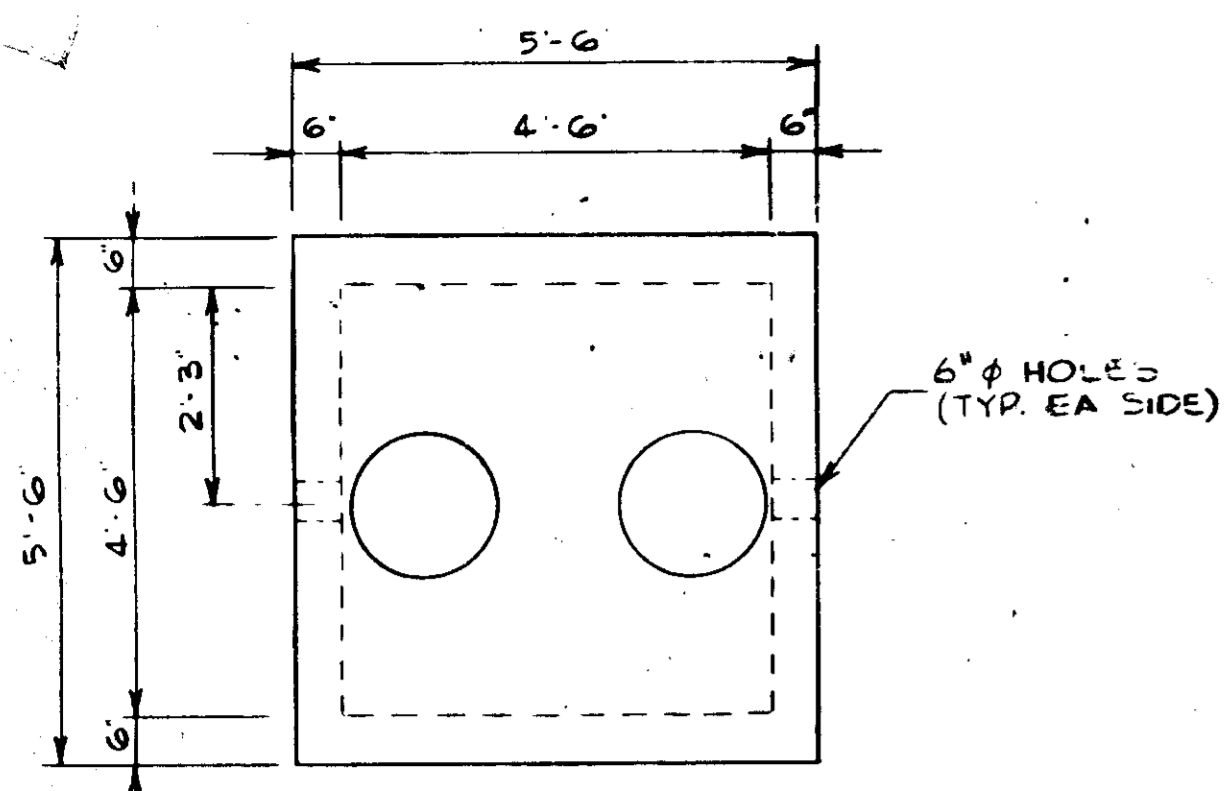
SHOP NO. 829 DATE 4-11-83

NAME: W. K. HAYES
SCALE: 1" = 20'-0" SHEET 5 OF 7

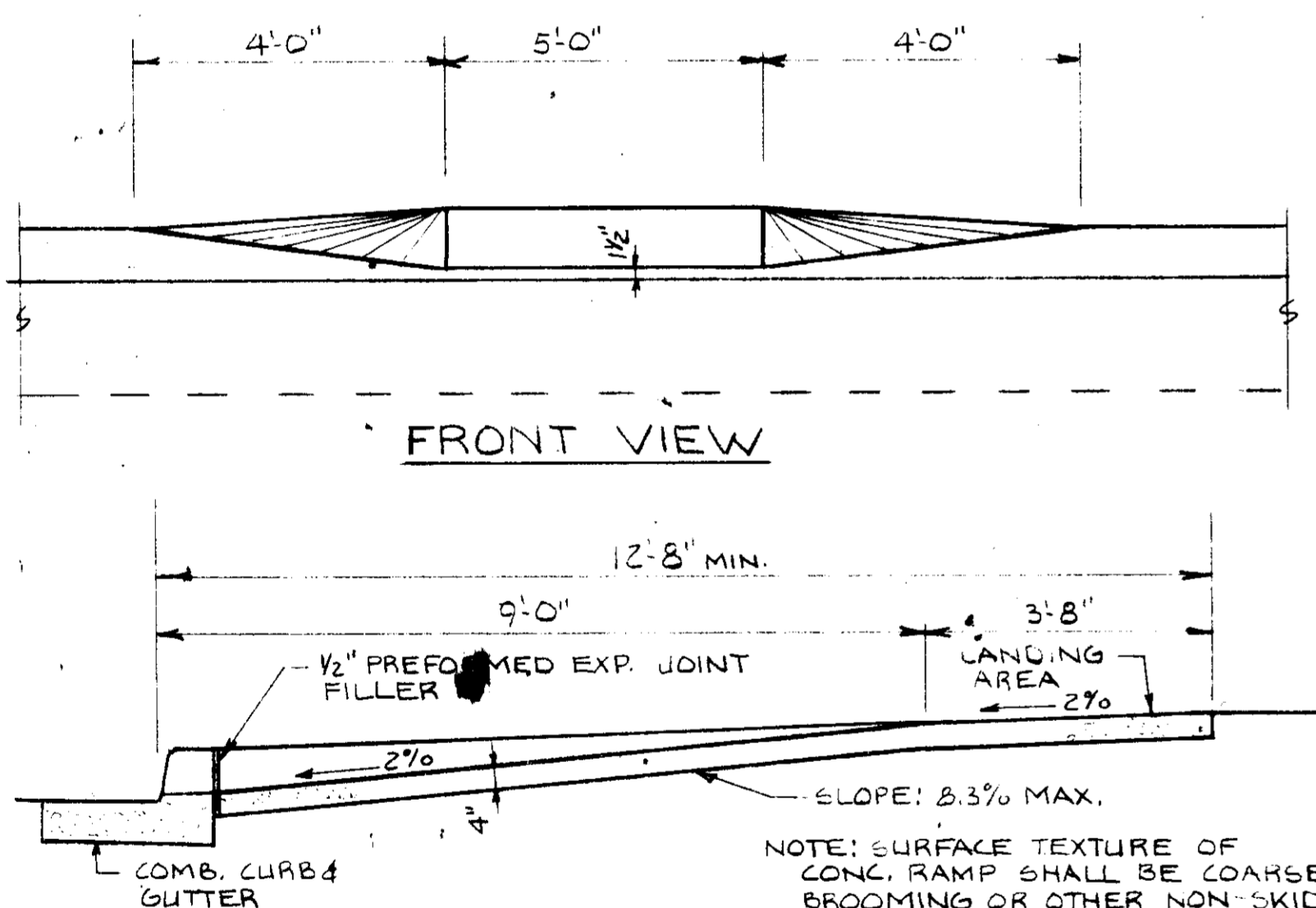
CH. BY M. PRZYBYLOWICZ 6/30/83
OWNER & DEVELOPER

Friendly restaurants
NORTH WILBRANAM MASSACHUSETTS
(ROUTE 28 EAST OF SPRINGFIELD)
TEL. SPRINGFIELD 843-2400

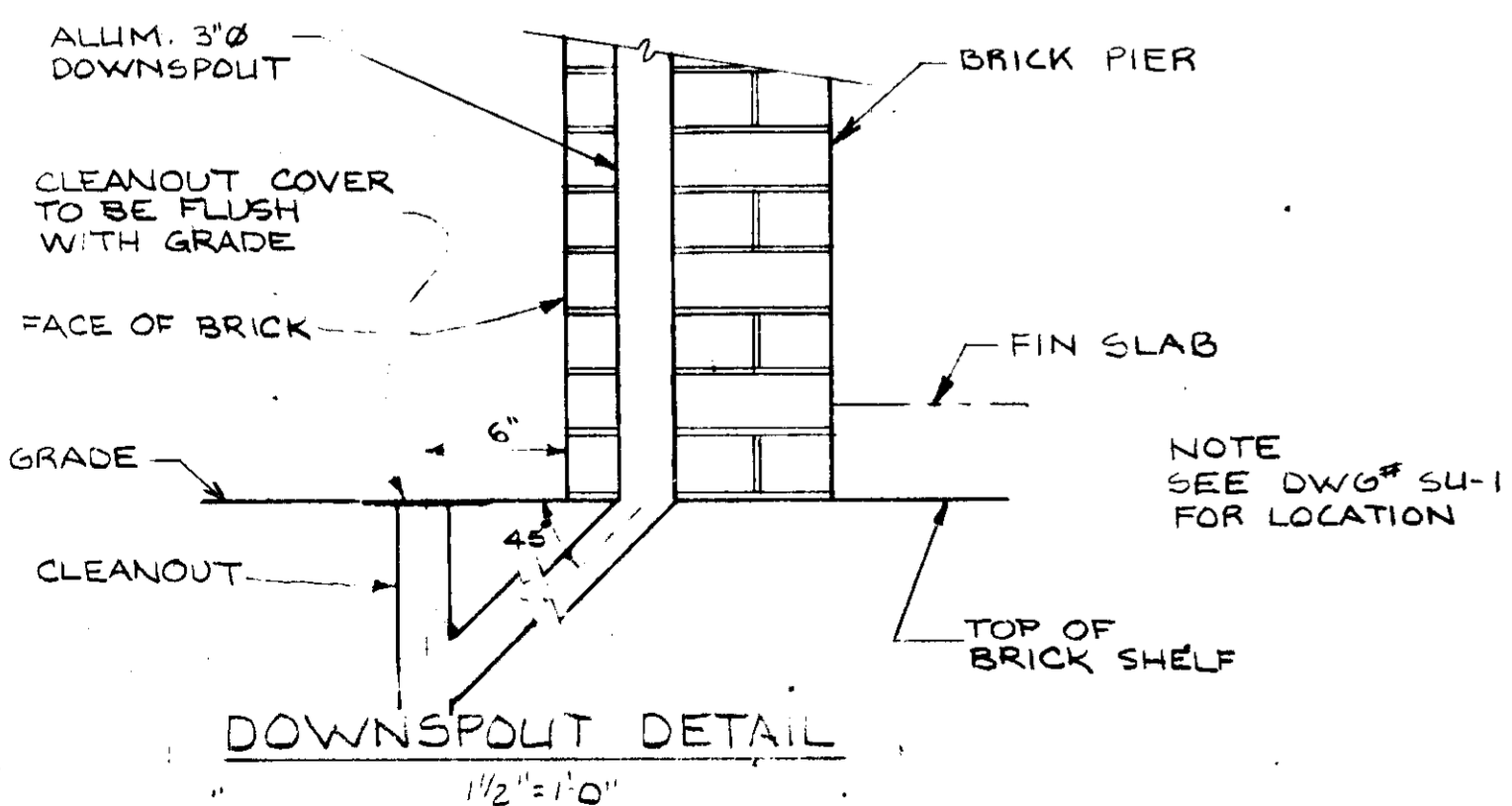
YARD REQUIREMENTS		SITE DATA	
FRONT	30'-0"	BUILDING	3,460 SQ.FT.
SIDE	0	PLOT (TOTAL)	65,601 SQ.FT.
SIDE	50'-0"	PLOT (DWLP.)	65,601 SQ.FT.
REAR	50'-0"	PLOT (PAVED)	32,204 SQ.FT.
		PARKING	62 CARS



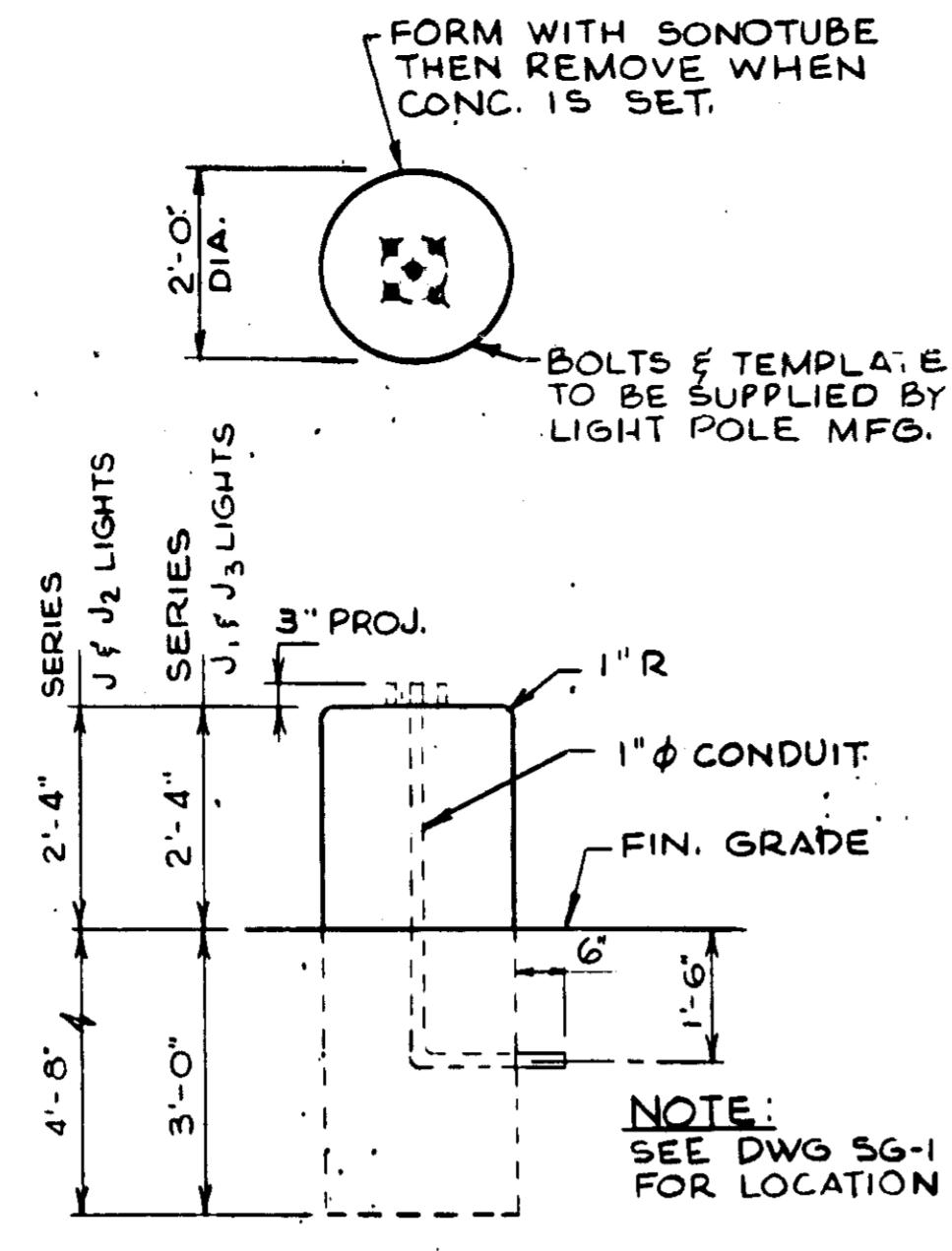
500 GAL GREASE TRAP DETAIL
1/2" = 1'-0"



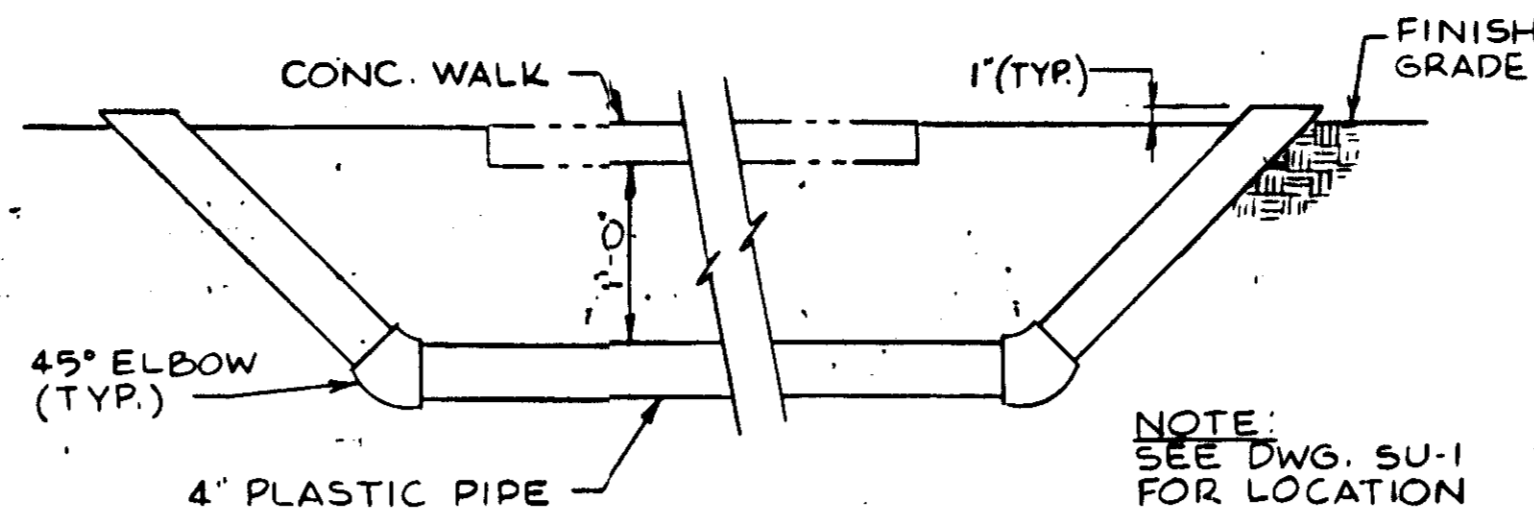
TYPICAL HANDICAP RAMP
1/2" = 1'-0"



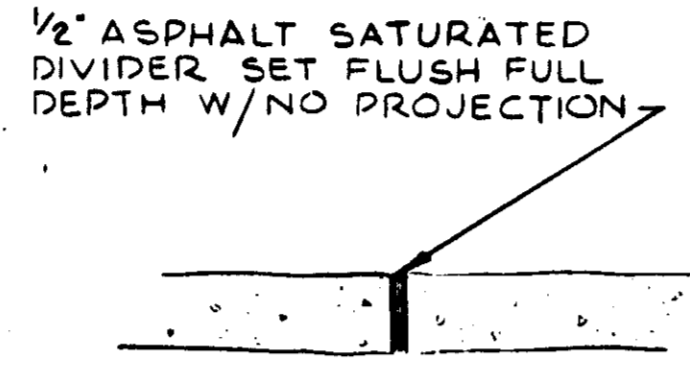
DOWNSPOUT DETAIL
1/2" = 1'-0"



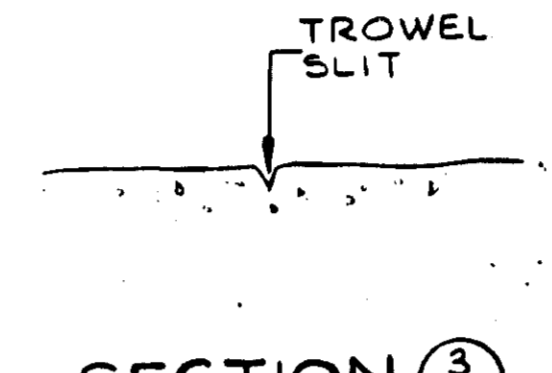
PARKING LOT LIGHT BASE
1/2" = 1'-0"



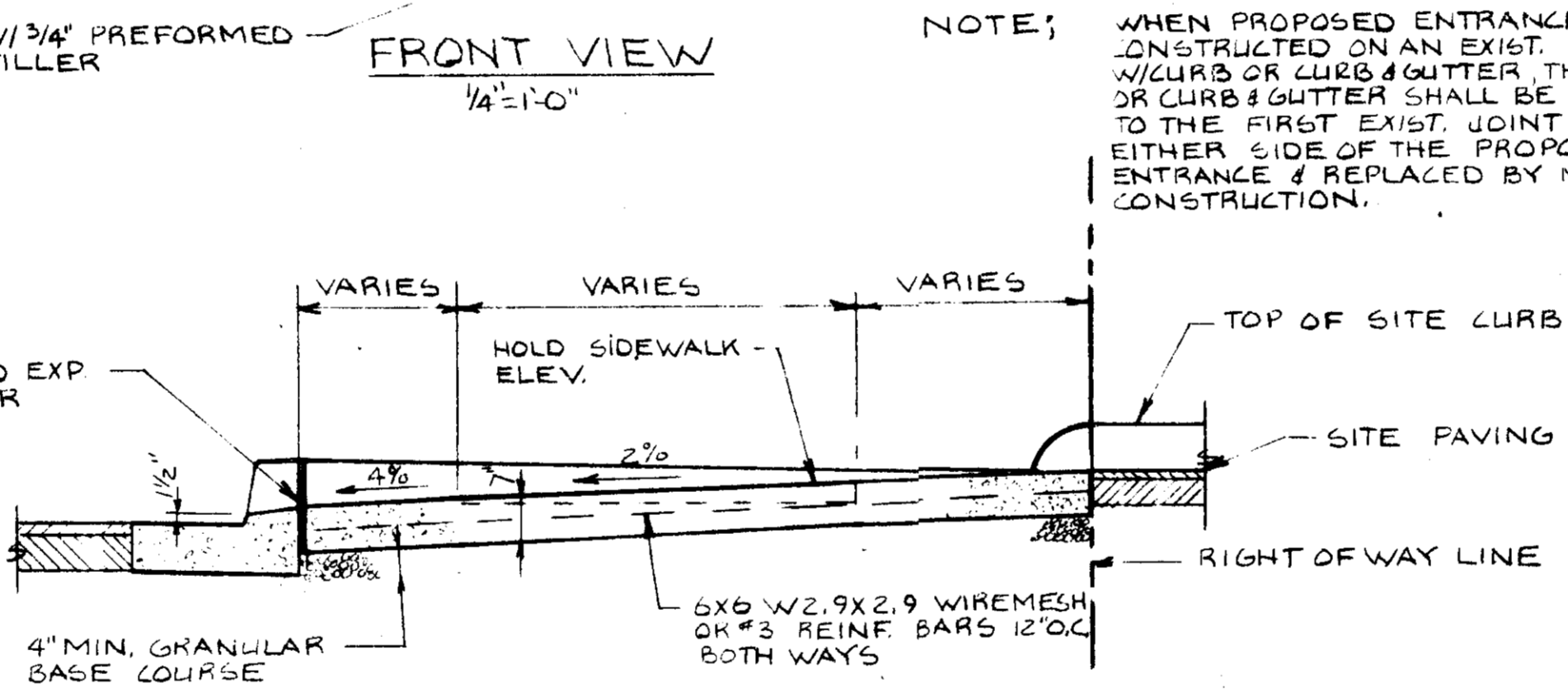
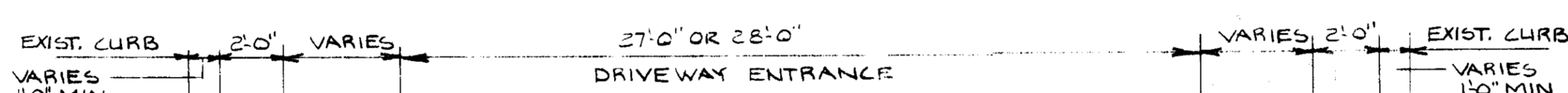
LAWN IRRIGATION CHASE DETAIL
3/4" = 1'-0"



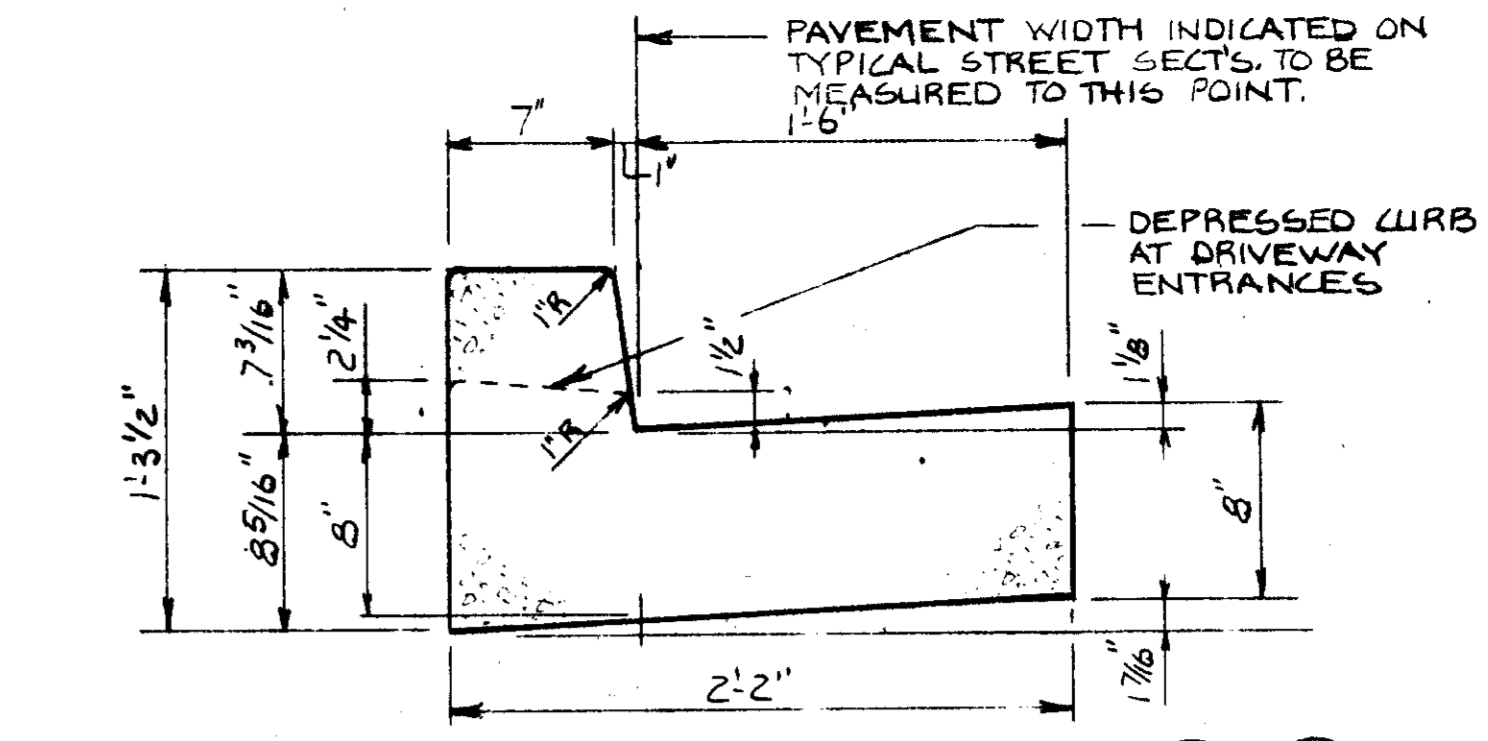
SECTION 2
NO SCALE



SECTION 3
NO SCALE

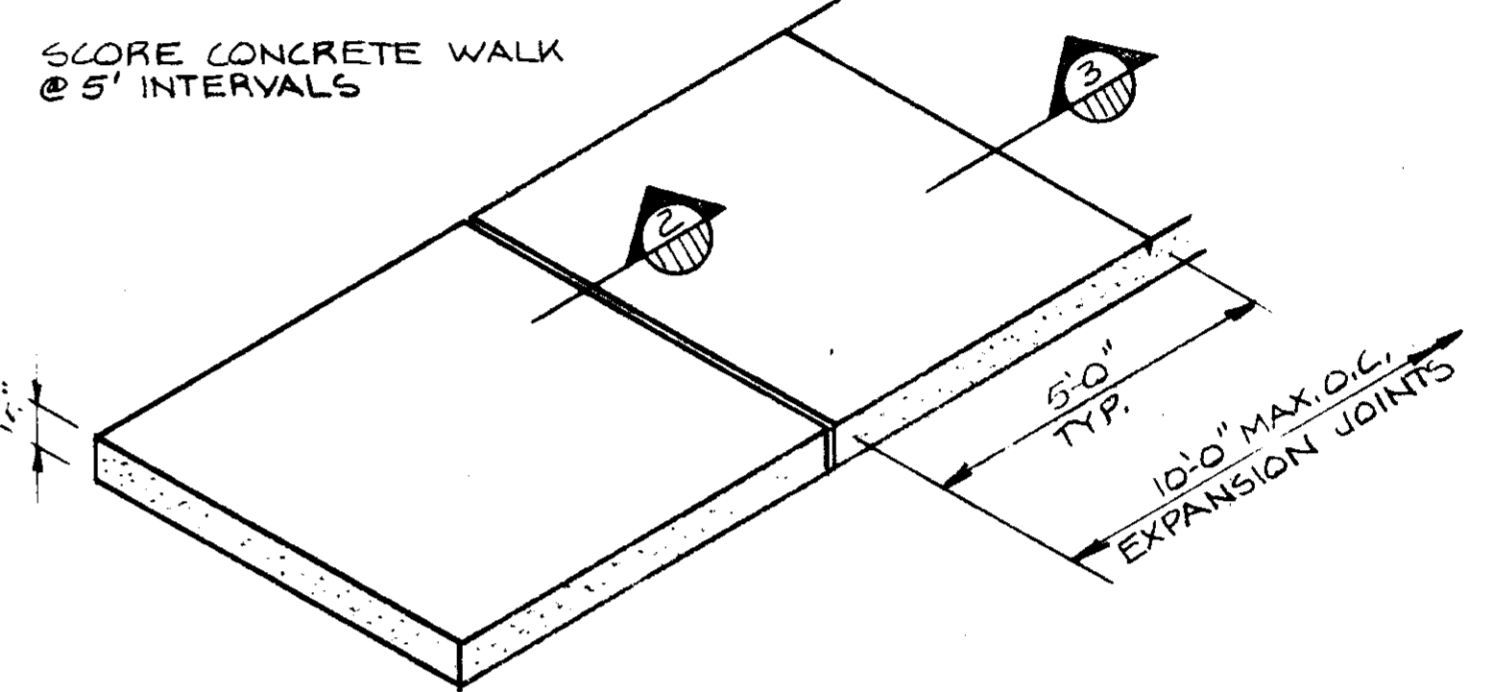


TYPICAL DRIVEWAY ENTRANCE
1/2" = 1'-0"

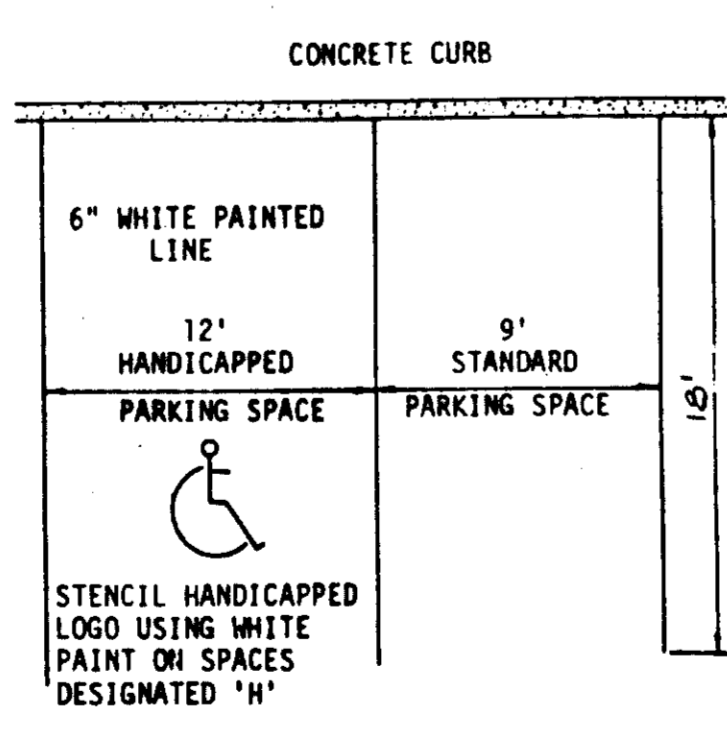


COMBINATION CURB & GUTTER SECTION
1/2" = 1'-0"

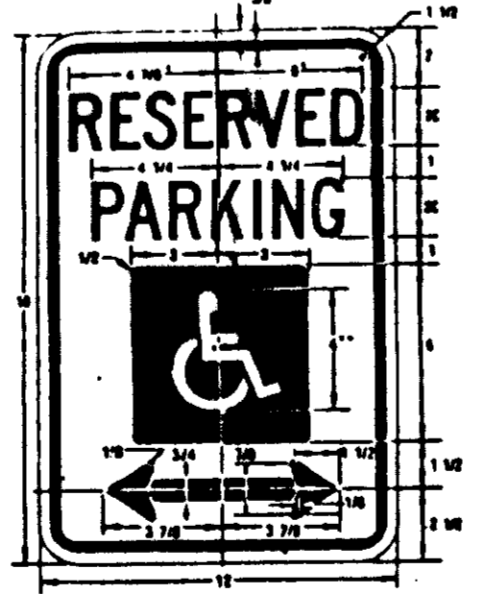
NOTE: PROVIDE EXPANSION JOINT WHEREVER SIDEWALK ABUTS CURBS, BUILDING, STAIRS AND INTERSECTIONS OF WALKS.



SIDEWALK SECTION
NO SCALE



TYPICAL PARKING DETAIL
NO SCALE



HANDICAPPED SIGN DETAIL
NO SCALE

APPROVED: DEPARTMENT OF PUBLIC WORKS FOR PUBLIC WATER AND SEWER AND STORM DRAINAGE SYSTEMS AND ROADS.
Date: 9-9-83

APPROVED: OFFICE OF PLANNING AND ZONING
Date: 9-15-83

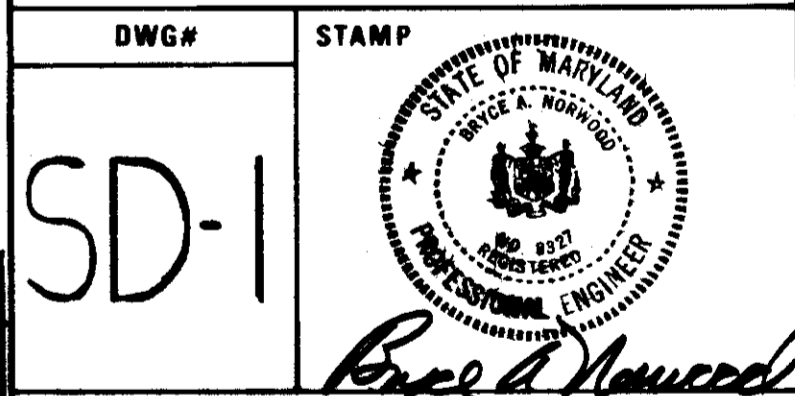
APPROVED: HOWARD COUNTY HEALTH DEPARTMENT FOR PUBLIC WATER AND SEWERAGE SYSTEMS.
Date: 9-13-83

CONCRETE SCHEDULE		
ITEM	MIX	REMARKS
PARKING LOT LIGHT BASE SIGN BASE	CONC. PER ASTM C-94 2500 PSI @ 28 DAYS 3" MAX. SLUMP 3/4" MAX. AGGREGATE	
SIDEWALKS, CURBS	CONC. PER ASTM C-94 4000 PSI @ 28 DAYS 3" MAX. SLUMP 3/4" MAX. AGGREGATE ADMIXTURE: PER ASTM C-494 (SEE NOTE #2)	SEE DETAIL FOR FINISH (SEE NOTE #1 FOR CURING COMPOUND)
DUMPSTER PAD, STEPS & MISC. PADS	CONC. PER ASTM C-94 4000 PSI @ 28 DAYS 3" MAX. SLUMP 3/4" MAX. AGGREGATE	SEE DETAIL FOR FINISH (SEE NOTE #1 FOR CURING COMPOUND)

- NOTES:
- APPLY (1) COAT MASTERSEAL #66 SEALER @ A RATE OF 450 SQ. FT. PER GAL.
 - WATER REDUCING ADMIXTURE: "POZZOLITH" MASTER BUILDERS - TYPE "A" (ALTERNATES WILL BE FURNISHED UPON REQUEST)

NAME	DATE	VISION
MS	6/21/83	RYSD DWG ADDED SECT #415, H/CAP RAMP, DRIVEWAY, DTL, H/CAP SIGN & STRIP DTL, CONC. SPEC. SECT #243
MSP	9/22/83	RYSD, DOWNSPOUT DET.

APPROVED
PLANNING BOARD OF HOWARD COUNTY
DATE: 8-10-83



TITLE: COLUMBIA DOBBIN RD. COMMERCIAL CTR SECTION-1, AREA-1 PARCEL S-1 6TH. ELECTION DISTRICT, HOWARD CO., MD.
SITE CONCRETE DETAILS

SHOP NO. 329 DATE 6/21/83
NAME: MICHAEL SOULIERE
SCALE: AS NOTED
CH. BY: OWNER & DEVELOPER
SHEET 7 OF 7
Friendly restaurants
NORTH WILBORHAM MASSACHUSETTS (ROUTE 28 EAST OF SPRINGFIELD) TEL. SPRINGFIELD 543-2400