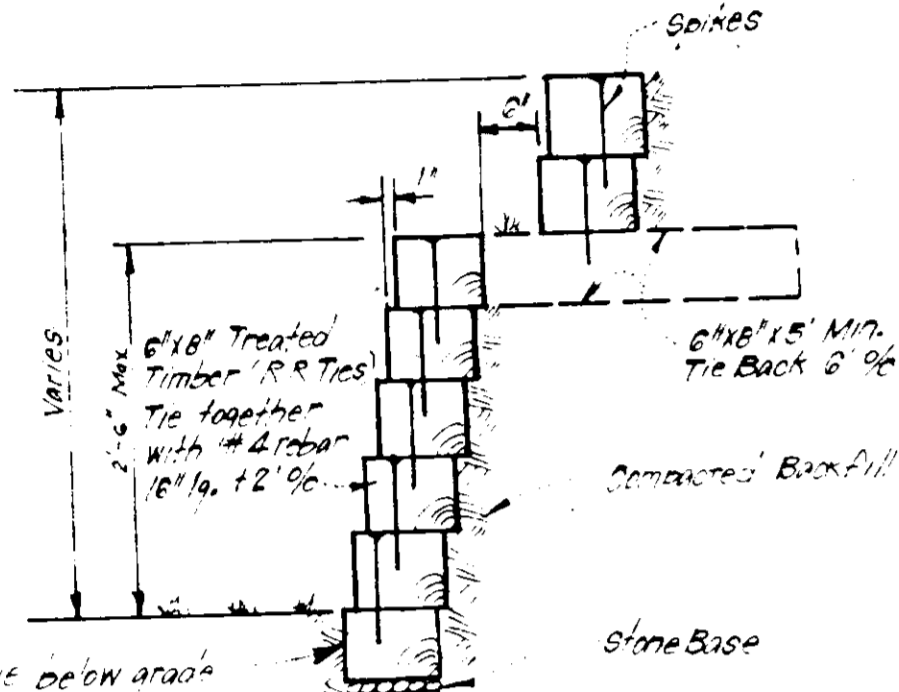


Note Materials and Construction shall be in accordance with No. 60 Road Construction Code

**DRIVEWAY ABUTTING MODIFIED CURB & GUTTER**  
NO SCALE

- ALTERNATE #1  
1" Bit Conc. Surface  
4" Bit Conc. Base
- ALTERNATE #2  
1" Bit Conc. Surface  
3" Bit Conc. Base  
3" Gravel

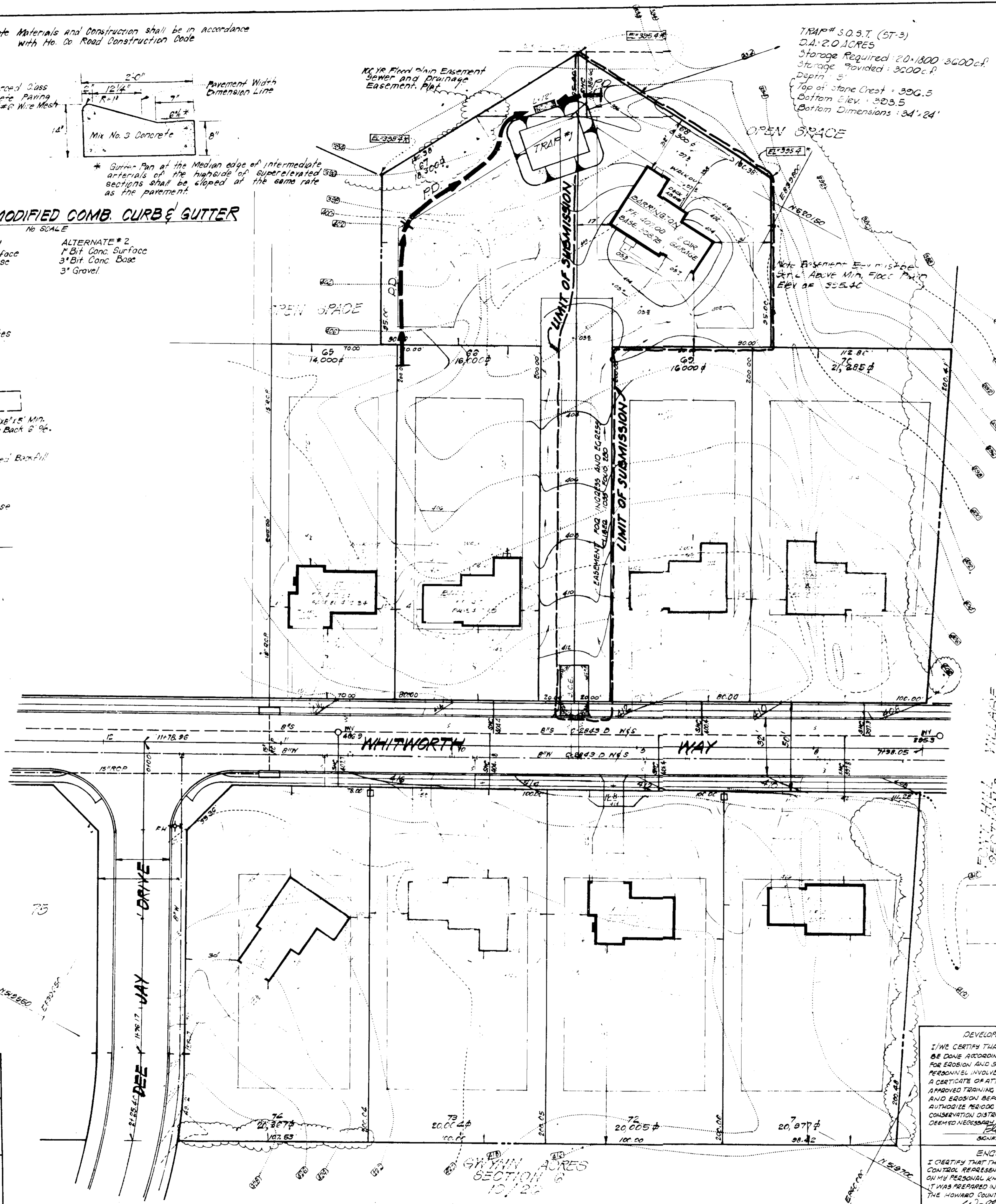


**TIMBER RETAINING WALL**  
NO SCALE

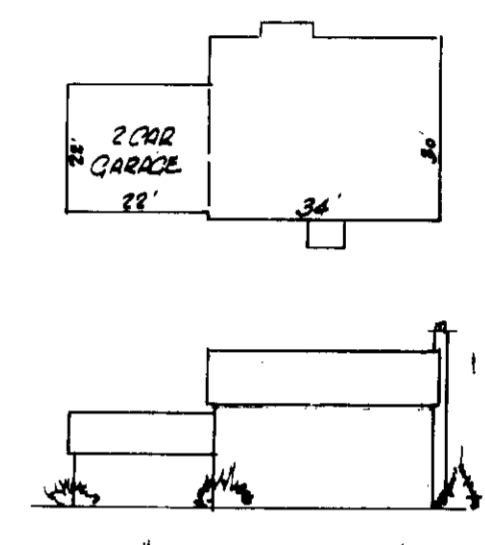
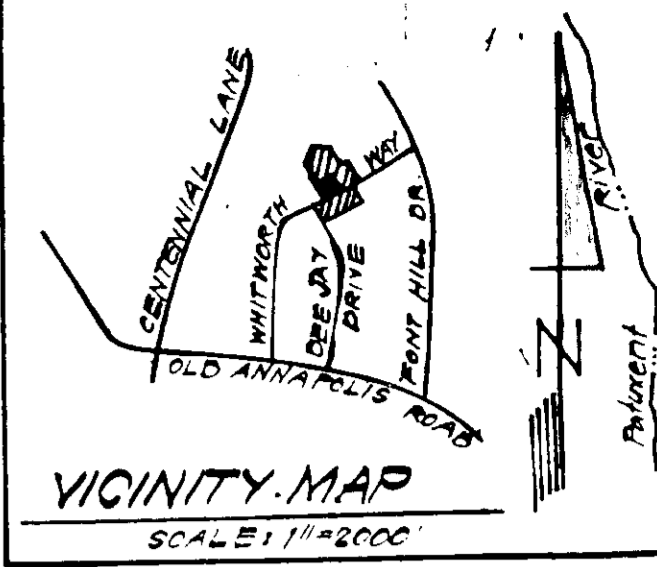
APPROVED FOR PUBLIC WATER AND PUBLIC SEWERAGE SYSTEMS,  
HOWARD COUNTY HEALTH DEPARTMENT  
DATE 6-4-83

APPROVED HOWARD COUNTY OFFICE OF PLANNING & ZONING  
DATE 8-4-83

APPROVED FOR PUBLIC WATER AND PUBLIC SEWERAGE  
STORM DRAINAGE SYSTEMS AND PUBLIC ROADS  
HOWARD COUNTY DEPARTMENT OF PUBLIC WORKS  
DATE 7-27-83



TRAP# S.O.S.T. (ST-3)  
D.A. 2.0 ACRES  
Storage Required: 20,1800 3600c.f.  
Storage Provided: 3000c.f.  
Depth: 3'  
Top of stone Chest: 306.5  
Bottom Elev.: 303.5  
Bottom Dimensions: 34' x 24'



**TYPICAL HOUSES**  
NO SCALE

**SEDIMENT CONTROL NOTE:**  
IT IS THE DEVELOPER'S RESPONSIBILITY TO MAINTAIN THE SEDIMENT CONTROL IN FUNCTIONING.

- GENERAL NOTES:**
- The land included in this plan is zoned: R-20
  - Coordinates shown are extensions made from the Maryland State Plane Coordinate System. Bearings refer to true north and are based on Howard County Geodetic Survey Point No. 304 0001 and No. 314 0003.
  - Total Number of Lots: "ONE"
  - The area covered in this submission is located on Tax Map #24.
  - The total area included on this plan is 183,057 sq. ft.
  - All roadways are public and existing.
  - Any damage to county owned rights of way shall be corrected at the developer's expense.
  - RECORDED ON PLAT # 4322 (6/10/79)
  - THE CONTRACTOR OR DEVELOPER SHALL CONTACT THE COUNTY INSPECTION SURVEYS
- LEGEND:** DIV. 24 HRS. IN ADVANCE OF WORK; CALL 702-7876

Reviewed for Howard County S.C.D.  
and meets Technical Requirements  
Signature: James M. Whelan Date: 7/11/83  
U.S. Soil Conservation Service

Approved: [Signature] Date: 7/27/83  
Howard S.C.D.

**APPROVED**  
DIVISION OF LAND DEVELOPMENT  
ZONING ADMINISTRATION  
HOWARD COUNTY, MARYLAND  
DATE: 7-11-83  
JMA / LFO

**DEVELOPER/BUILDER'S CERTIFICATE**  
I/WE CERTIFY THAT ALL DEVELOPMENT AND CONSTRUCTION WILL BE DONE ACCORDING TO THIS PLAN OF DEVELOPMENT AND PLAN FOR EROSION AND SEDIMENT CONTROL AND THAT ALL RESPONSIBLE PERSONNEL INVOLVED IN THE CONSTRUCTION PROJECT WILL HAVE A CERTIFICATE OF ATTENDANCE AT A COURSE OF NATURAL RESOURCES APPROVED TRAINING PROGRAM FOR THE CONTROL OF SEDIMENT AND EROSION BEFORE BEGINNING OF THE PROJECT. I/WE AUTHORIZE RECORD ON-SITE INSPECTIONS BY THE HOWARD COUNTY SOIL CONSERVATION DISTRICT OR THEIR AUTHORIZED AGENTS AS ARE DETERMINED NECESSARY.

**ENGINEER'S CERTIFICATE**  
I CERTIFY THAT THIS PLAN FOR EROSION AND SEDIMENT CONTROL REPRESENTS A FEASIBLE AND WORKABLE SOLUTION BASED ON MY PERSONAL KNOWLEDGE OF THE SITE CONDITIONS AND THAT IT WAS PREPARED IN ACCORDANCE WITH THE REQUIREMENTS OF THE HOWARD COUNTY SOIL CONSERVATION DISTRICT.

Walter Lark 7/10/83  
LAND SURVEYOR # 5550

SEWER CODE 5841000  
WATEL - SOI  
REVISION TO S.D.P. 83-92"

<ul style="list-style-type: none"> <li>engineering</li> <li>surveying</li> <li>landscape design</li> <li>construction contracting</li> <li>development cost</li> <li>property development</li> </ul>	<b>LAND DESIGN ASSOCIATES</b> land development consultant 416 JOPPA ROAD ■ towson, md 21204 telephone: (301) 821-6280 321-0112	<b>SITE, SEDIMENT &amp; EROSION CONTROL PLAN FOR LOT G8 BURLEIGH MANOR</b> SECTION 1, AREA 1 215 ELECTION DISTRICT HOWARD COUNTY, MARYLAND FOR GRAYSON HOMES INC 636 WOODHURST ROAD BALTIMORE, MD 21207	SCALE: 1" = 30' DRAWING: 1 of 2 JOB NO: FILE NO:
--	---	---	---