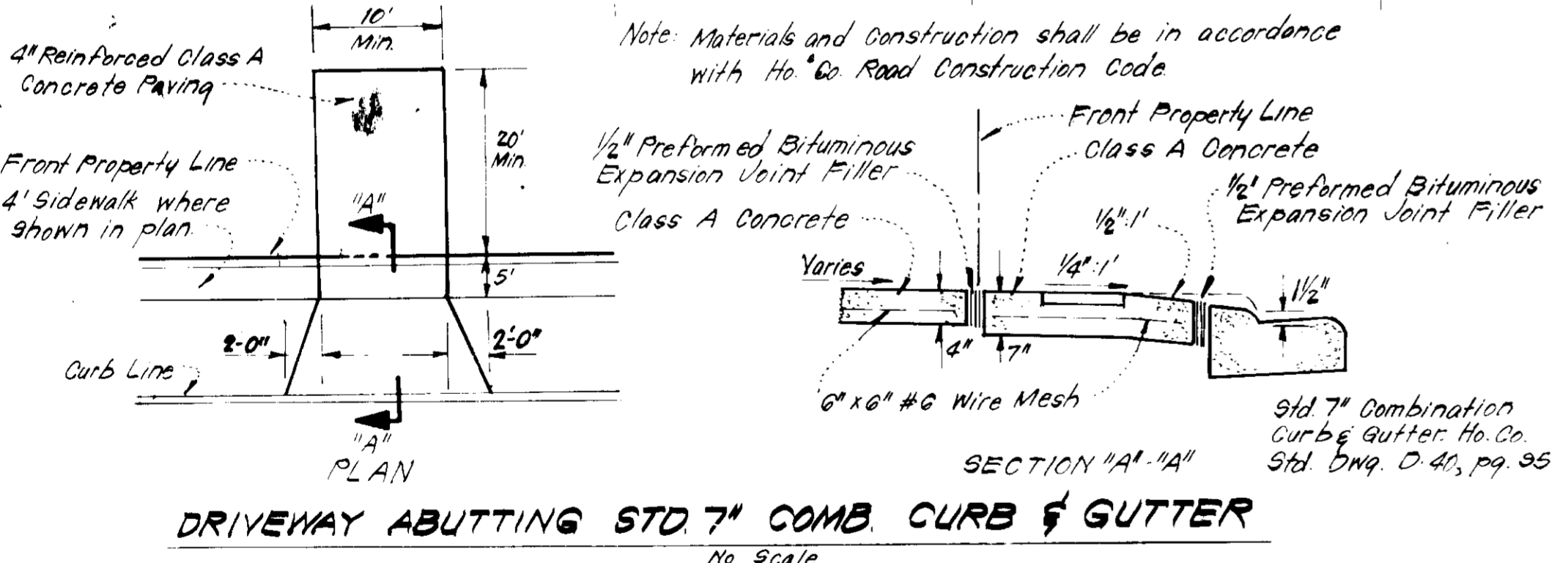
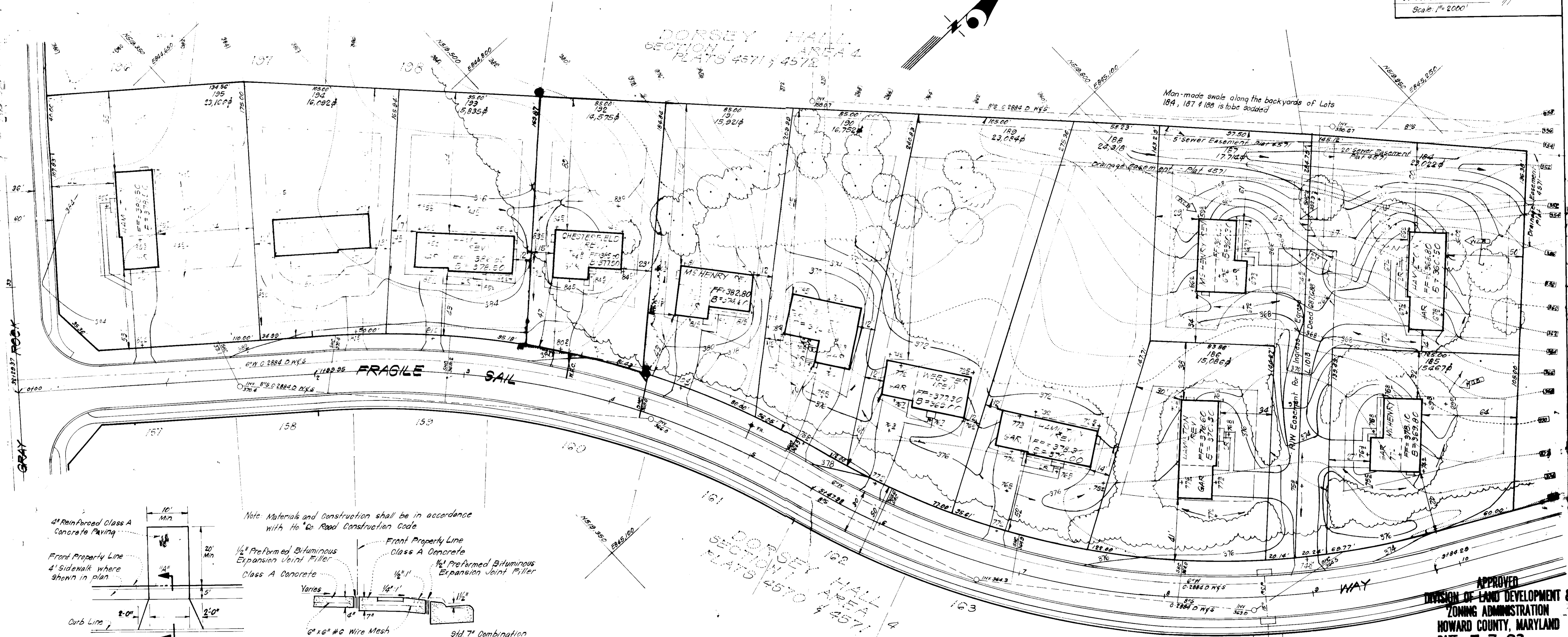
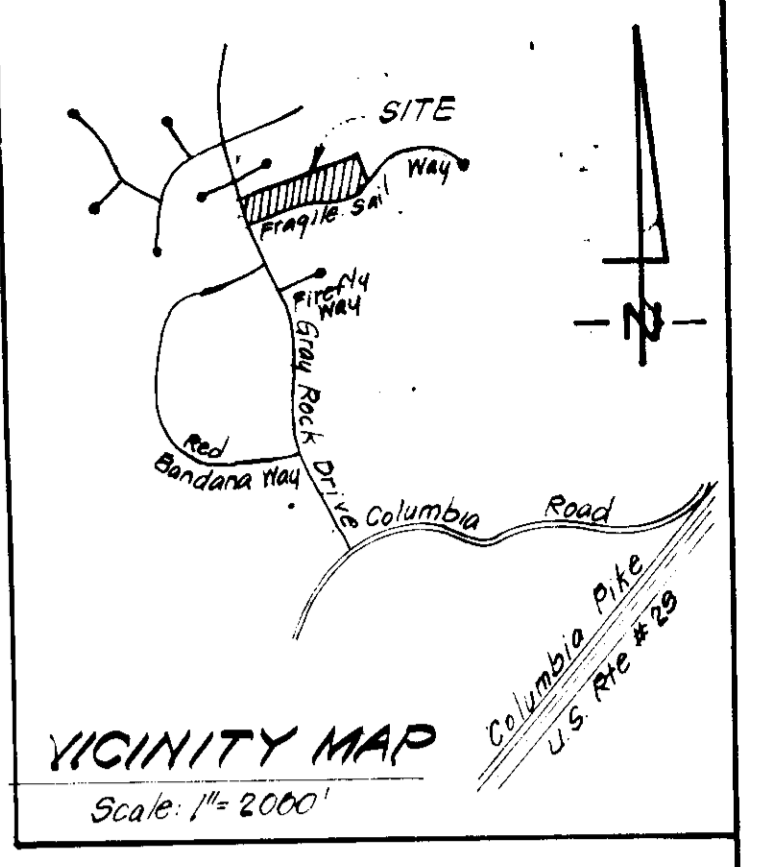


LEGEND:

- 1 Contour Interval 2 Ft.
- 2 Existing Contour 370
- 3 Proposed Contour 375
- 4 Spot Elevation
- 5 Direction of Drainage
- 6 Exist. Trees to be retained
- 7 Walk Cut Basement

GENERAL NOTES:

- 1. The Land included in this plan is zoned R-20
- 2. All coordinates are based on traverse control for Columbia established by Maps Inc., in 1968 by Purdum & Vesohke in 1966 which controls were tied to Maryland Bureau of Control Survey monuments to U.S. Coast & Geodetic Survey Monuments in the Columbia area
- 3. The area covered in this submission is located on Tax Map #24
- 4. The total area included on this plan is 0.3346 Acres
- 5. All roadways are public and existing
- 6. Any damage to county owned rights of way shall be corrected at the developer's expense
- 7. Total Number of Lots is 1



SURVEYOR'S CERTIFICATE

I hereby certify that the information contained hereon is the same as shown on previously approved S.D.P. 81-06 with the following exceptions:

1. House Type and Grading has been revised on Lot 182.

I further certify that the Sediment & Erosion control measures, as previously approved, will not be affected, the grading is substantially the same as originally approved, the building setbacks comply with Howard County Zoning and Subdivision Regulations, and the lot has the same geometric configuration as shown on the respective recorded subdivision Plat.

6-14-83 Date
 DONALD B. SACKETT
 Registered Land Surveyor
 Md. No. 6080

APPROVED
 DIVISION OF LAND DEVELOPMENT & ZONING ADMINISTRATION
 HOWARD COUNTY, MARYLAND
 DATE 7-7-83

APPROVED FOR PUBLIC WATER AND PUBLIC SEWERAGE SYSTEMS,
 HOWARD COUNTY HEALTH DEPARTMENT
 COUNTY HEALTH OFFICER: [Signature] DATE: 7/20/83

APPROVED HOWARD COUNTY OFFICE OF PLANNING & ZONING
 PLANNING DIRECTOR: [Signature] DATE: 7-22-83

APPROVED FOR PUBLIC WATER AND PUBLIC SEWERAGE,
 STORM DRAINAGE SYSTEMS AND PUBLIC ROADS
 HOWARD COUNTY DEPARTMENT OF PUBLIC WORKS
 DIRECTOR: [Signature] DATE: 7-19-83

CHIEF BUREAU OF ENGINEERING: [Signature] DATE: 7-18-83

NO.	REVISION	DATE
1	Use revised plan on Lot 185 to provide W.C.B.	6-4-81
2	Use Type rev. on Lot 182 from Jackson to Chesterfield	6-14-83

Water code (F11) and Sewer code (S752600)
 Plat Reference: Dorsey Hall 1/4 Plat No's. 4570

CLARK • FINEPROCK & SACKETT
 ENGINEERS • PLANNERS • SURVEYORS
 11315 LOCKWOOD DRIVE SILVER SPRING, MARYLAND 20904 (301) 593 3400

DESIGNED	J.M.E.	REVISED SITE DEVELOPMENT PLAN LOT 192	SCALE 1"=30'
DRAWN	J.M.E.	DORSEY HALL	DRAWING 1041
CHECKED	J.M.E.	SECTION 1 AREA 4 2ND ELECTION DISTRICT HOWARD COUNTY, MARYLAND	JOB NO. 79-092
DATE	June, 1983	FOR: The Ryland Group Inc. (Col. Div.) ONE KNOLL NORTH Suite 503 Columbia, Maryland 21045	FILE NO. 79-092-X