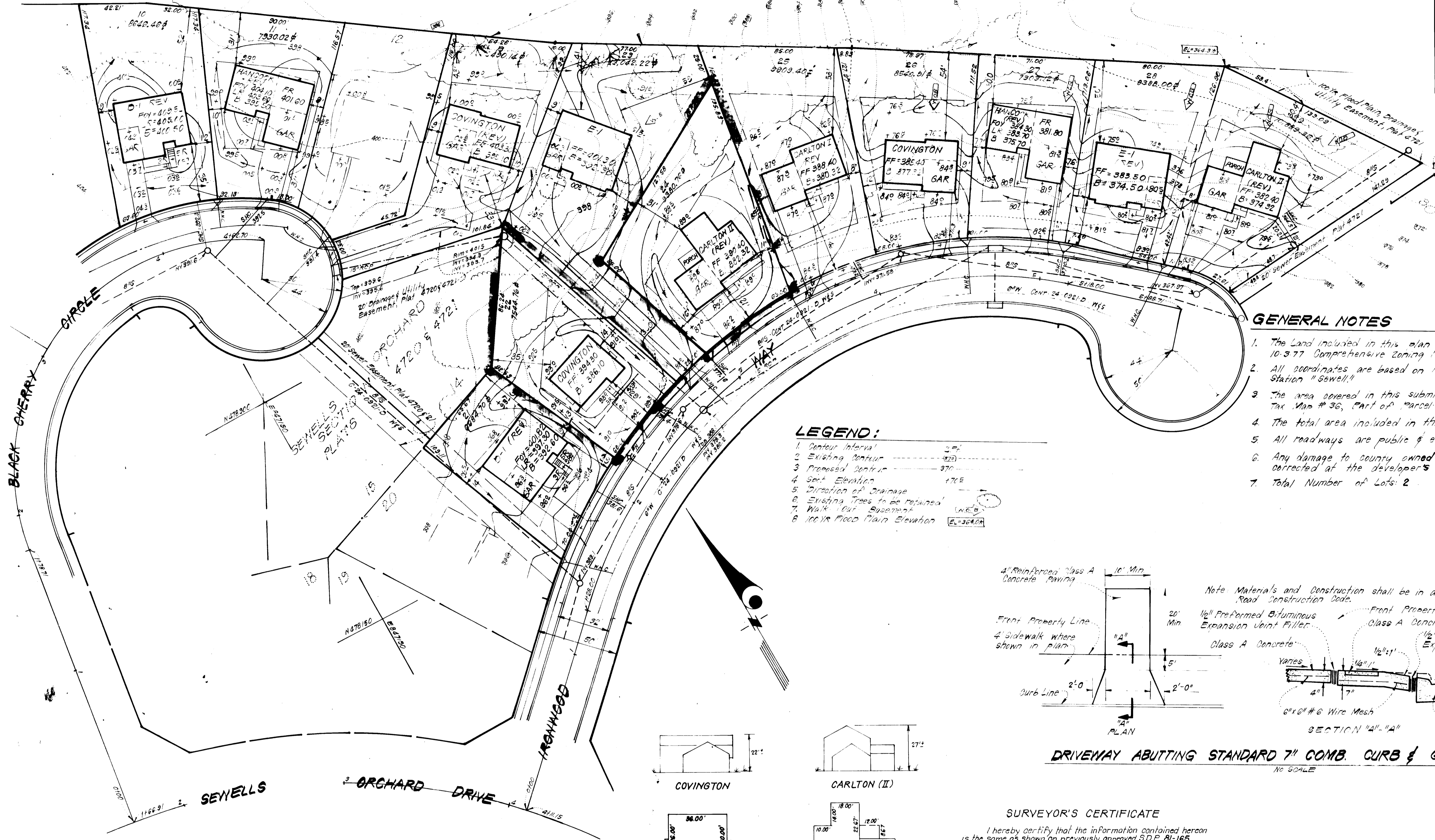
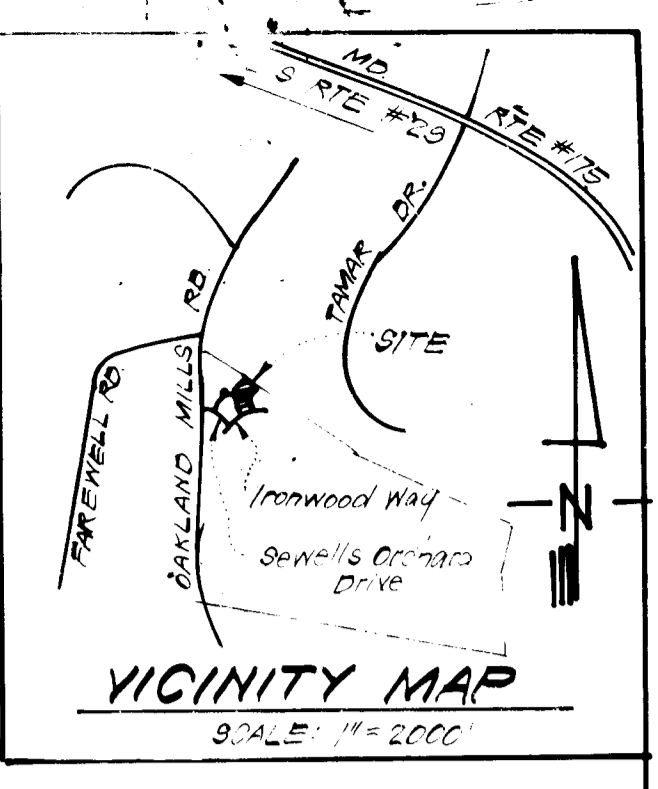


VILLAGE OF LONGREACH
SECTION 1 AREA 2
PLAT 3172

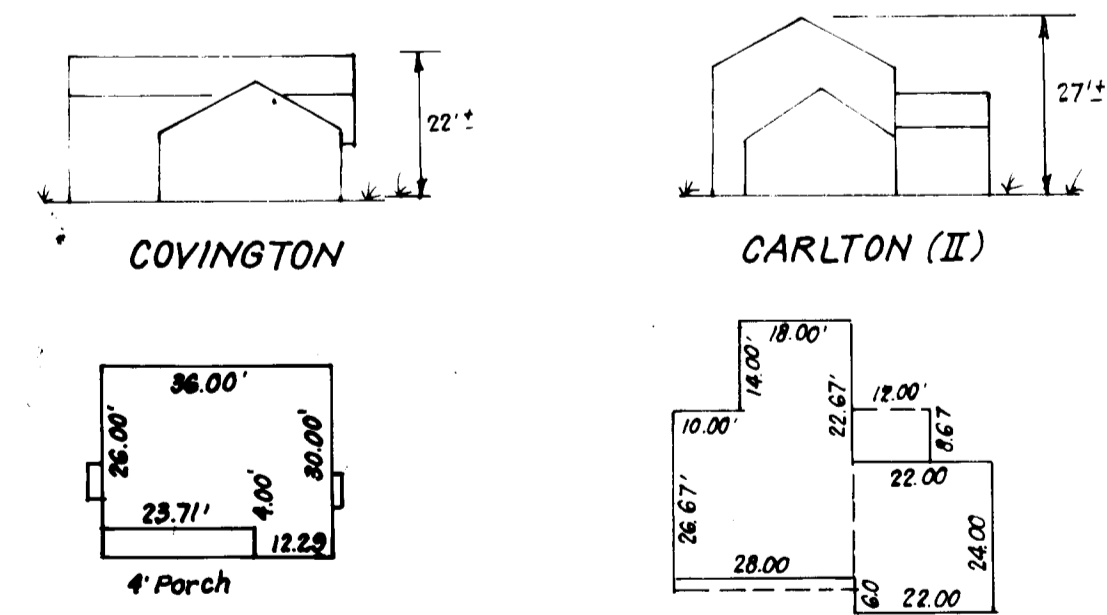
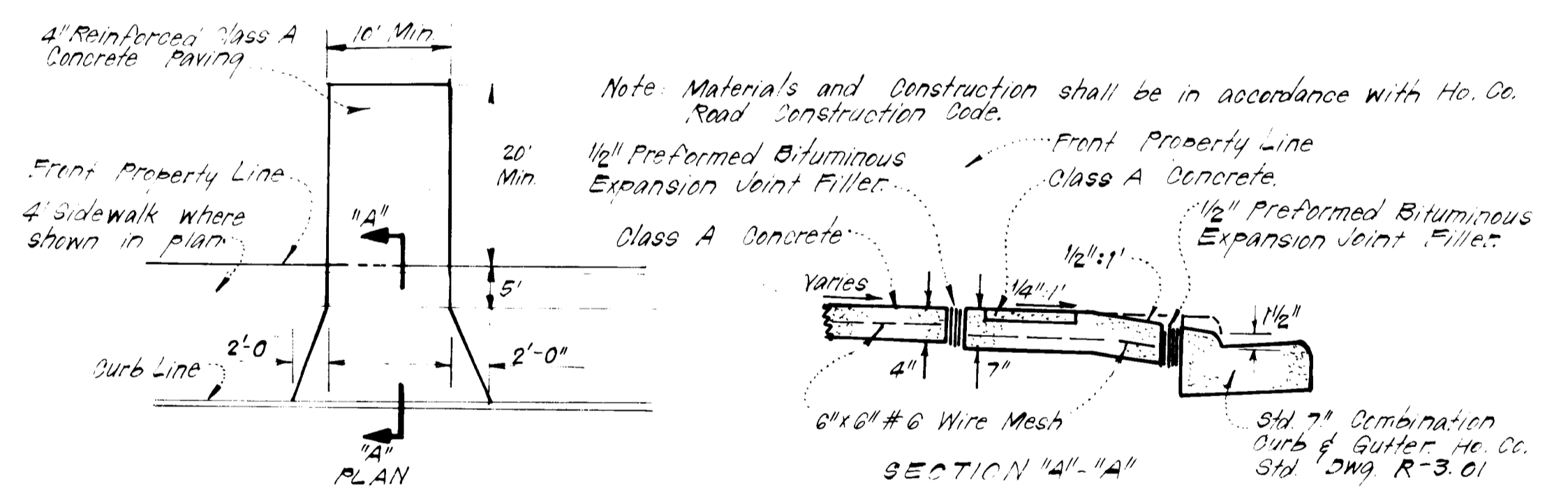


GENERAL NOTES

1. The Land included in this plan is zoned R90, per 10-3-77 Comprehensive Zoning Plan.
2. All coordinates are based on Howard County Control Station "Sewell."
3. The area covered in this submission is located on Tax Map # 36, Part of Parcel # 247.
4. The total area included in this plan is 0.388 Acres.
5. All roadways are public & existing.
6. Any damage to county owned rights of way shall be corrected at the developer's expense.
7. Total Number of Lots: 2.

LEGEND:

1. Contour Interval 2'-0"
2. Existing Contour 1'-0"
3. Proposed Contour 1'-0"
4. Spot Elevation 1700'
5. Direction of Drainage
6. Existing Trees to be Retained
7. Walk Out Easement
8. 100% Flood Plain Elevation E=364.04'



SURVEYOR'S CERTIFICATE

I hereby certify that the information contained hereon is the same as shown on previously approved S.D.P. 81-165 with the following exceptions:
1. House Types and Grading has been revised on Lots 22 and 24.
I further certify that the Sediment & Erosion control measures as previously approved, will not be affected, the grading is substantially the same as originally approved, the building setbacks comply with Howard County Zoning and Subdivision Regulations, and the lot has the same geometric configuration as shown on the respective recorded subdivision Plats.

5-20-83
Date

Donald B. Sackett
DONALD B. SACKETT
Registered Land Surveyor
Md. No. 6059

The contractor or developer shall contact the Construction Inspection/Survey Division, 24 hours in advance of commencement of work at 792-7272.

NOTE:

Street trees shall be planted by the Developer, Orchard's Assoc./BTR Realty, Inc., at a rate of at least one tree per 40' of lot frontage, and in accordance with Section 6.131 of the Subdivision and Land Development Regulations of Ho. Co.

APPROVED FOR PUBLIC WATER AND PUBLIC SEWERAGE SYSTEMS, HOWARD COUNTY HEALTH DEPARTMENT	DATE: 6/17/83
APPROVED HOWARD COUNTY OFFICE OF PLANNING & ZONING	DATE: 6-23-83
APPROVED FOR PUBLIC WATER AND PUBLIC SEWERAGE, STORM DRAINAGE SYSTEMS AND PUBLIC ROADS, HOWARD COUNTY DEPARTMENT OF PUBLIC WORKS	DATE: 6/17/83
DATE: 6-17-83	

APPROVED
DIVISION OF LAND DEVELOPMENT
ZONING ADMINISTRATION
HOWARD COUNTY, MARYLAND
DATE 6-9-83

Plat Reference: Plat No. 4721

CLARK • FINEROCK & SACKETT
ENGINEERS • PLANNERS • SURVEYORS
11315 LOKWOOD DRIVE • SILVER SPRING, MARYLAND 20904 • 301-593-3400

DESIGNED	JME	REVISD SITE DEVELOPMENT PLAN	SCALE
DRAWN	KJW	LOTS 22 & 24	1"=30'
CHECKED	JME	SEWELLS ORCHARD	DRAWING
DATE	May, 1983	SECTION 1	16F1
		6TH ELECTION DISTRICT	JOB NO
		HOWARD COUNTY, MARYLAND	81-025
		FOR: DIVERSIFIED HOUSING CORP.	FILE NO
		Suite 211 American City Bldg.	81-025-X
		Columbia, Md. 21044	