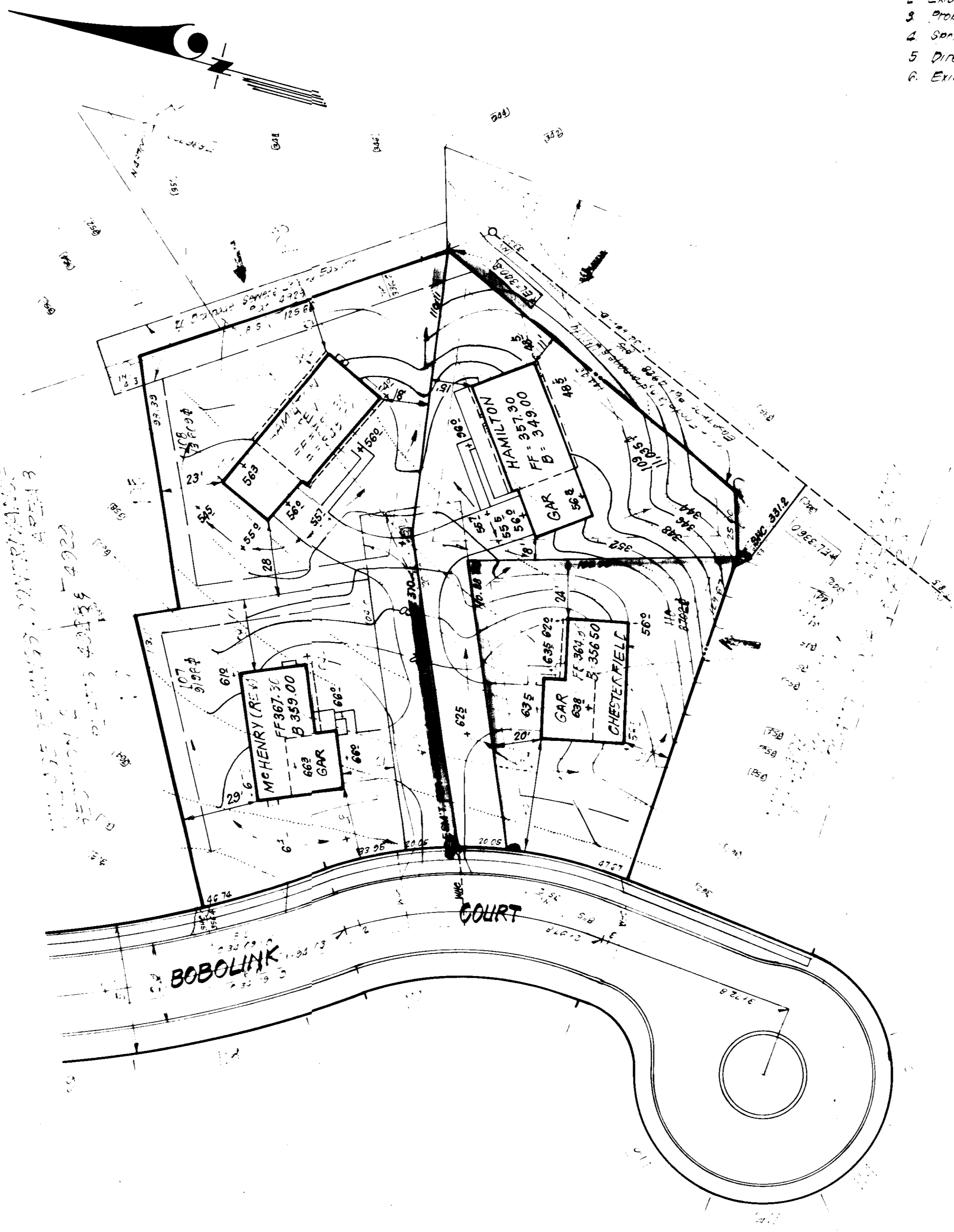
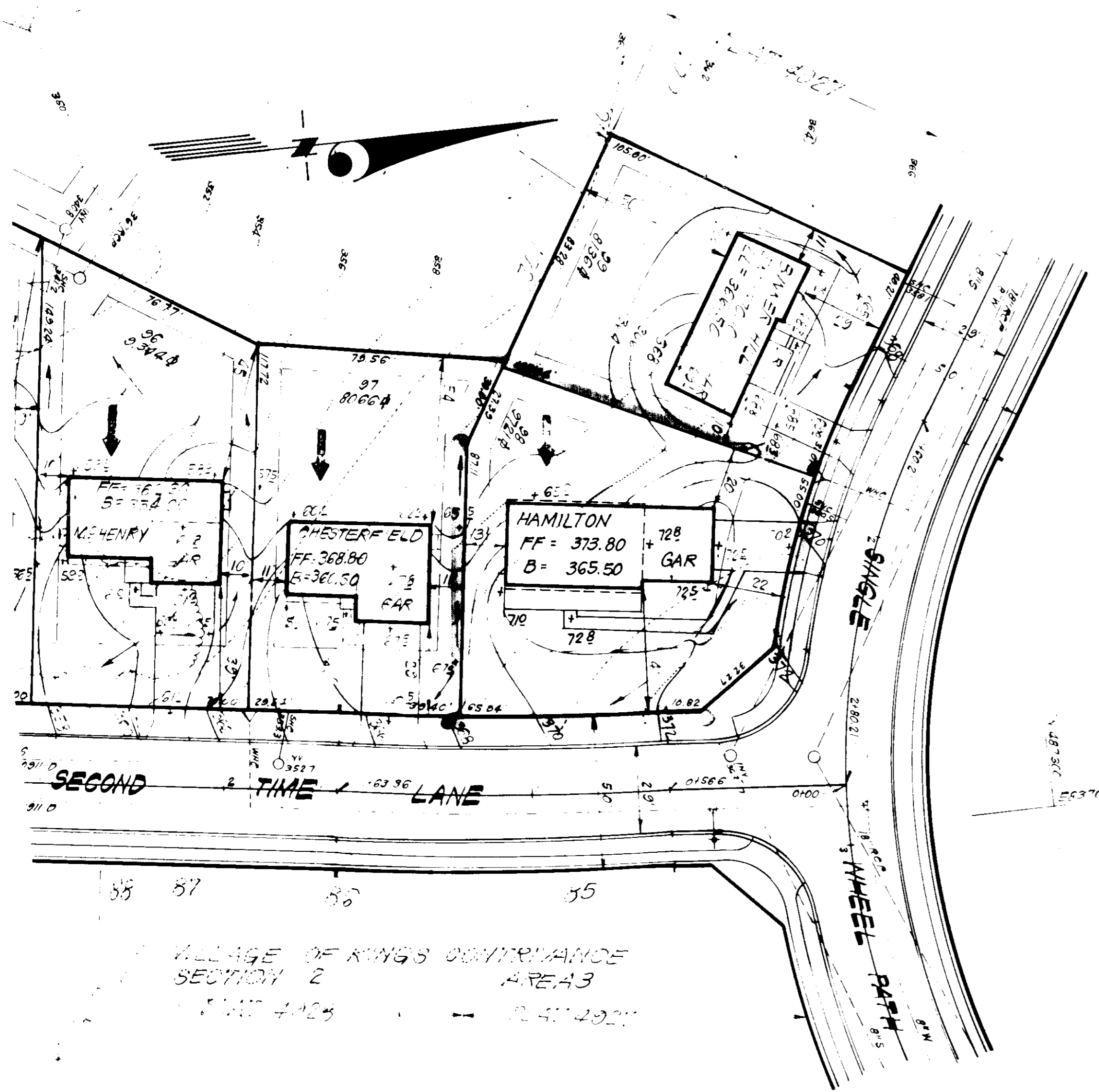
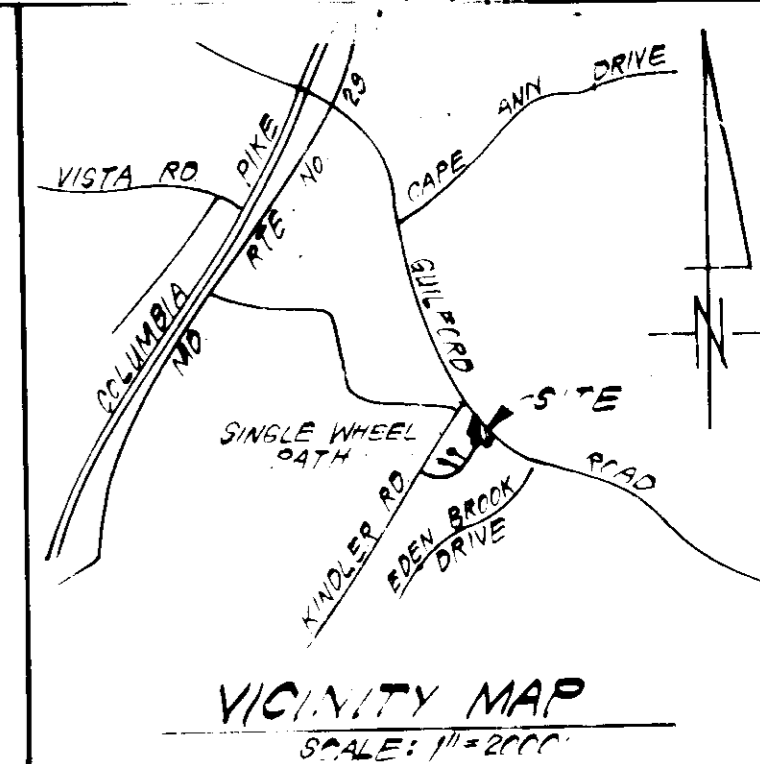


LEGEND:

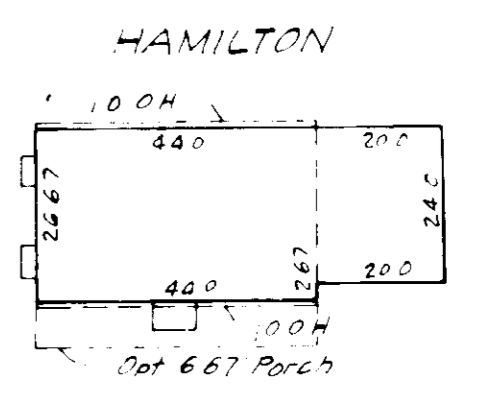
- 1. Contour Interval 2'-5"
- 2. Existing Contour 40'
- 3. Proposed Contour 40'
- 4. Spot Elevation 105'
- 5. Direction of Drainage
- 6. Existing Trees to be retained



GENERAL NOTES:

1. The Land included in this plan is zoned "R-1" (S.F.M.D.)
2. The Lots shown on this plan are covered by Final Development Plan Phase 178 A, Part II
3. All coordinates shown herein are based on Howard County Geographic Control Traverse which is based upon the Maryland State Plane Coordinate System.
4. The area covered is located on Tax Map # 42
5. The total area included in this plan is 0.476 Acres.
6. All roadways are public & existing.
7. Any damage to county owned rights of way or paving shall be corrected at the developer's expense.
8. Total number of Lots 2

APPROVED
DIVISION OF LAND DEVELOPMENT &
ZONING ADMINISTRATION
HOWARD COUNTY, MARYLAND
DATE 5-24-83
[Signature]



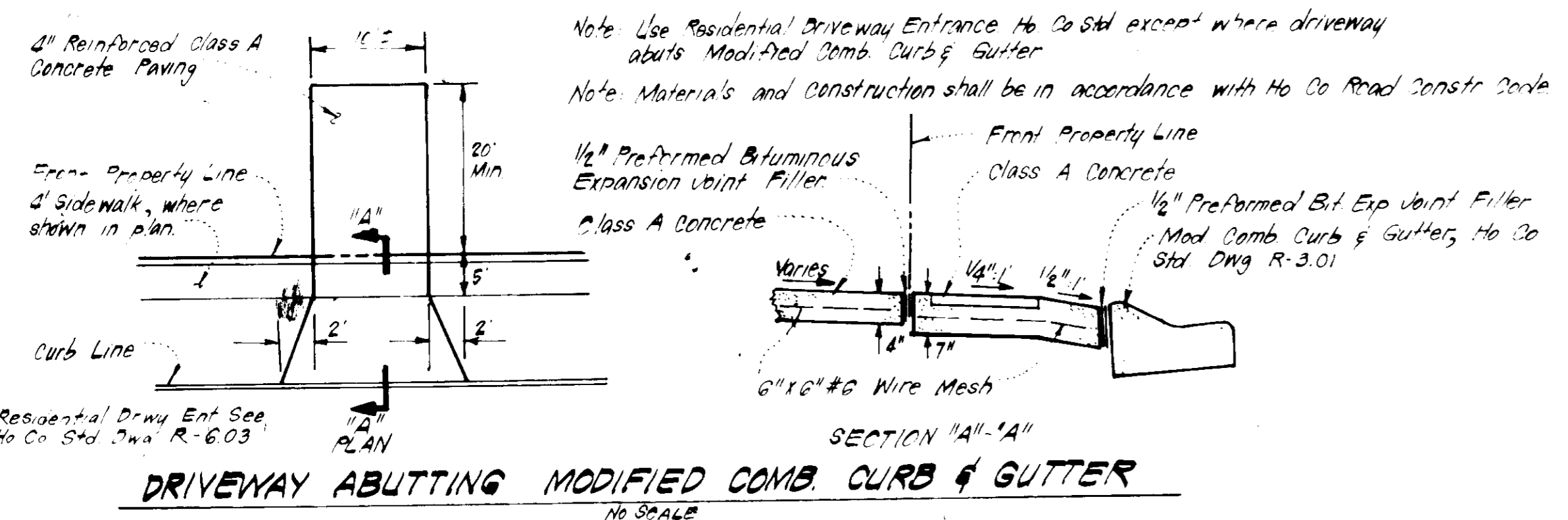
SURVEYOR'S CERTIFICATE

I hereby certify that the information contained hereon is the same as shown on previously approved S.D.P. 83-43c with the following exceptions:

1. House Type and Grading has been revised on Lots 98 and 109
2. I further certify that the Sediment & Erosion control measures, as previously approved, will not be affected, the grading is substantially the same as originally approved, the building setbacks comply with Howard County Zoning and Subdivision Regulations, and the lot has the same geometric configuration as shown on the respective recorded subdivision Plat.

May 3, 1983
Date

[Signature]
DONALD S. SACKETT
Registered Land Surveyor
Md. No. 6059



APPROVED FOR PUBLIC WATER AND PUBLIC SEWERAGE SYSTEMS,
HOWARD COUNTY HEALTH DEPARTMENT.
DATE 6-9-83

APPROVED HOWARD COUNTY OFFICE OF PLANNING & ZONING
DATE 6-10-83

APPROVED FOR PUBLIC WATER AND PUBLIC SEWERAGE,
STORM DRAINAGE SYSTEMS AND PUBLIC ROADS
HOWARD COUNTY DEPARTMENT OF PUBLIC WORKS
DATE 6-7-83

DESIGNED J.M.E.		REVISED SITE DEVELOPMENT PLAN LOTS 98 & 109	SCALE 1" = 31'
DRAWN K.L.W.			DRAWING 10-1
CHECKED J.M.E.		COLUMBIA VILLAGE OF KINGS OVERSIGHT SECTION 2 6TH ELECTION DISTRICT HOWARD COUNTY, MARYLAND FOR: THE RYLAND GROUP, INC. One Knoll North Suite 503 Columbia, MD 2105	JOB NO. 80740
DATE 5-8-83			FILE NO. 80740 X

SDP-83-191