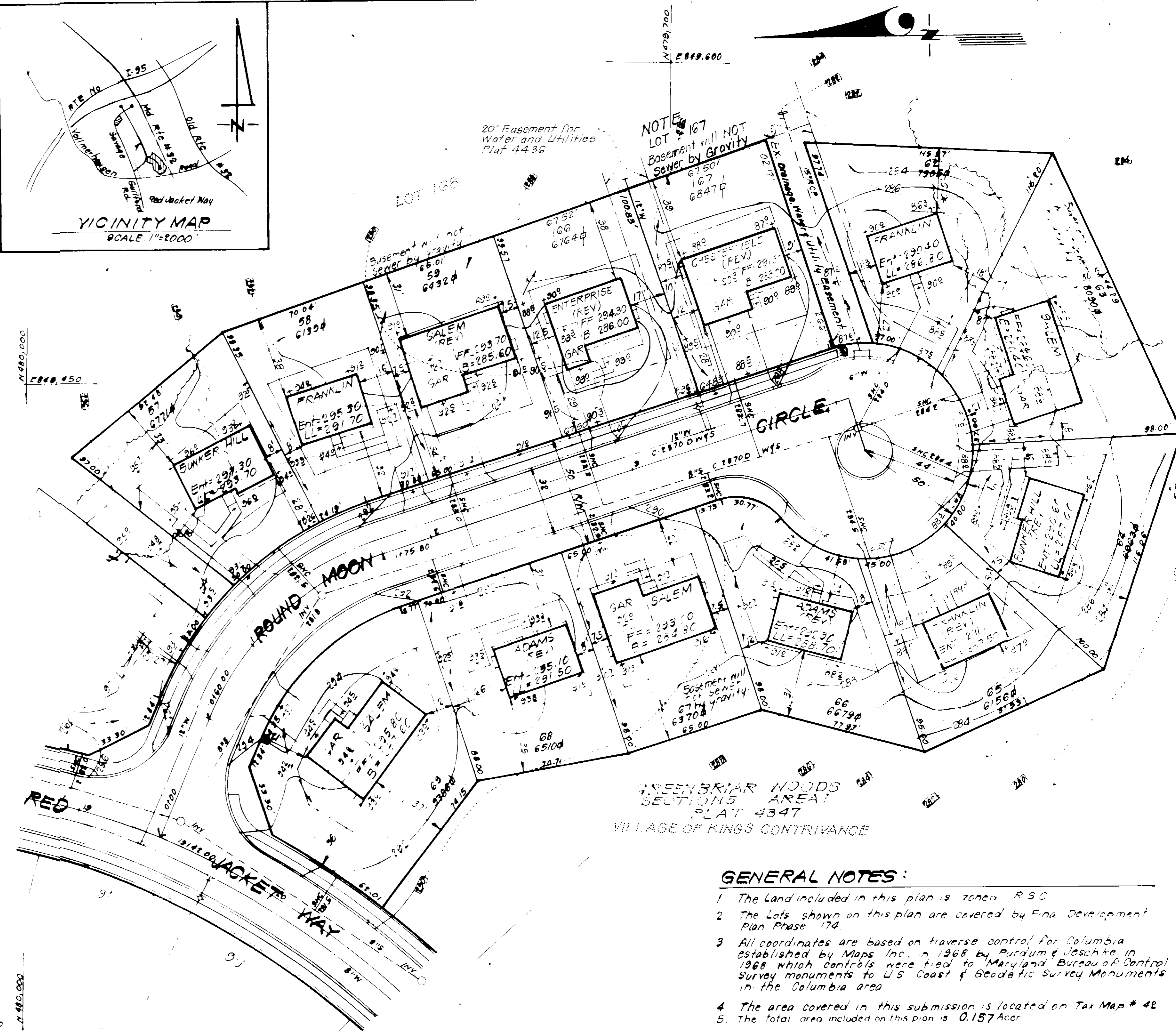
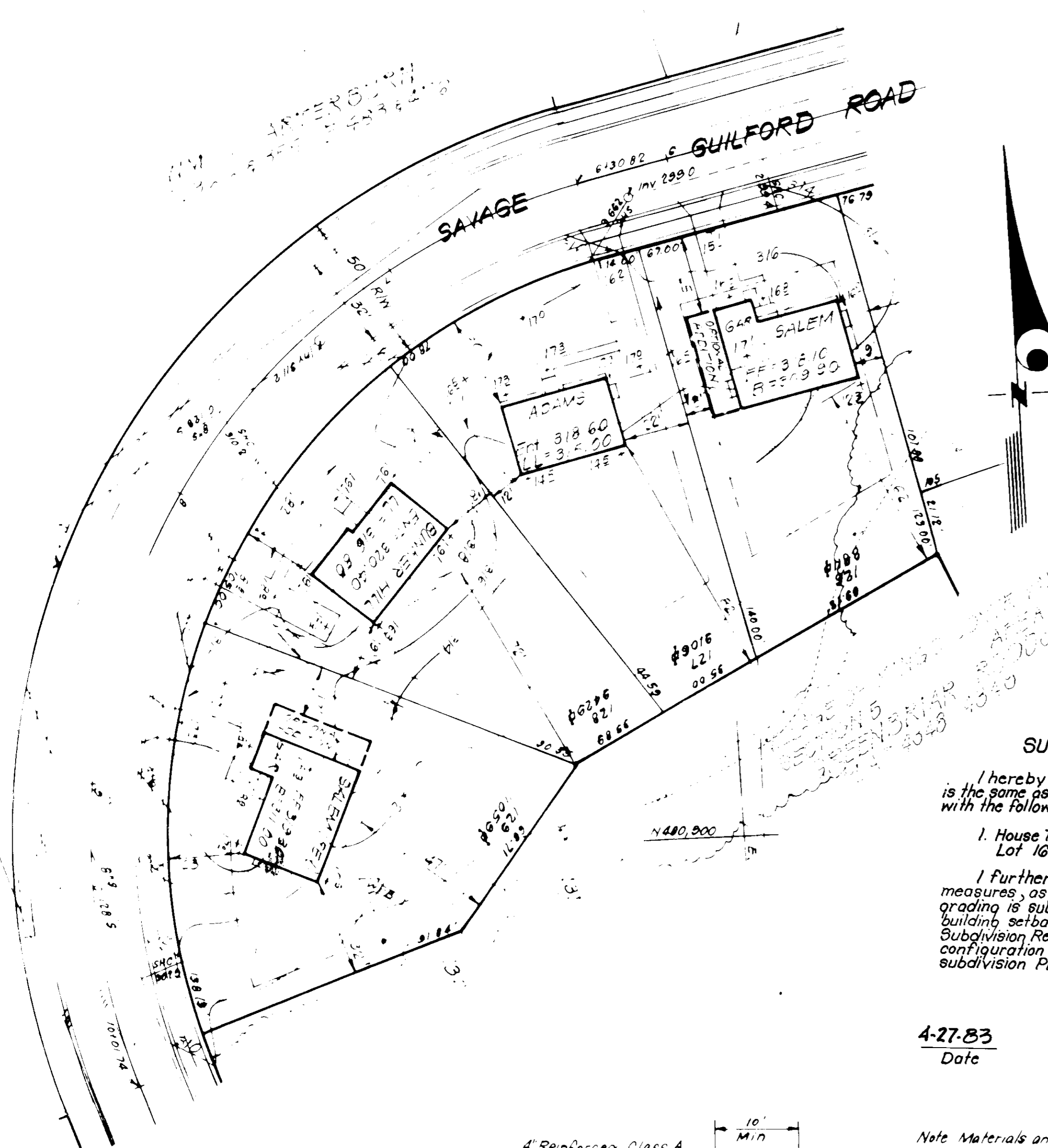
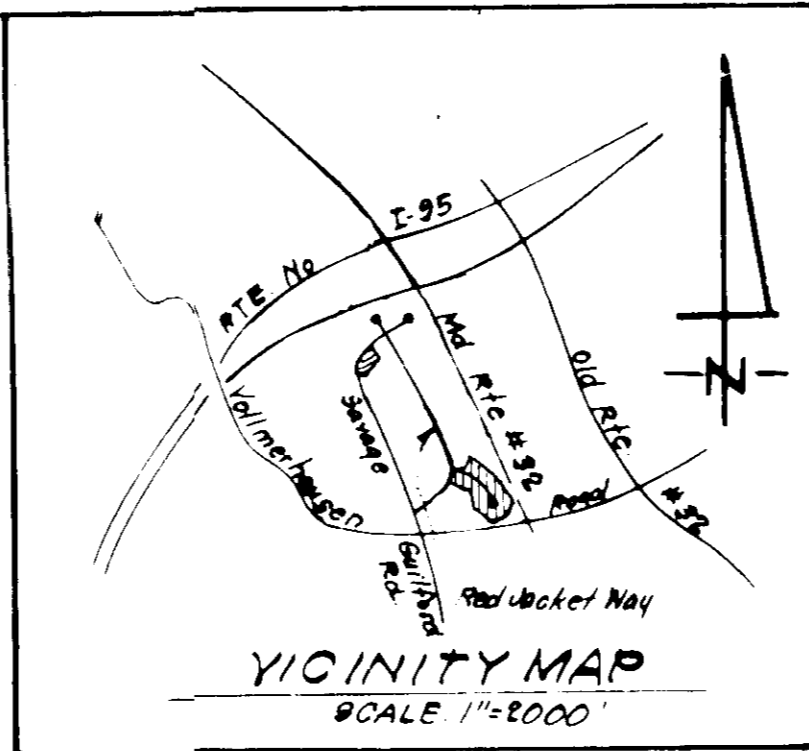


CHESTERFIELD

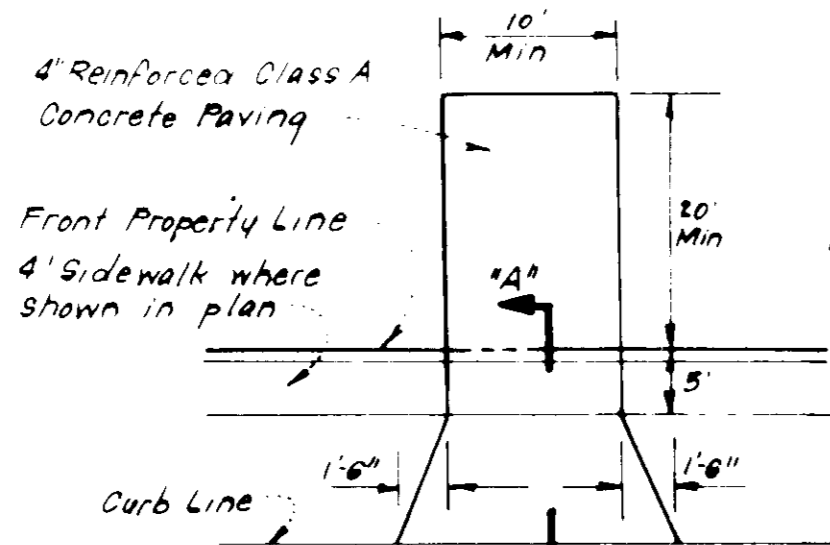


SURVEYOR'S CERTIFICATE
I hereby certify that the information contained hereon is the same as shown on a previously approved S.D.P. 80-143 with the following exceptions:

1. House Type and Grading has been revised on Lot 167 a resubdivision of Lot 61
2. I further certify that the Sediment & Erosion Control measures, as previously approved, will not be affected, the grading is substantially the same as originally approved, the building setbacks comply with Howard County Zoning and Subdivision Regulations, and the lot has the same geometric configuration as shown on the respective recorded subdivision Plat.

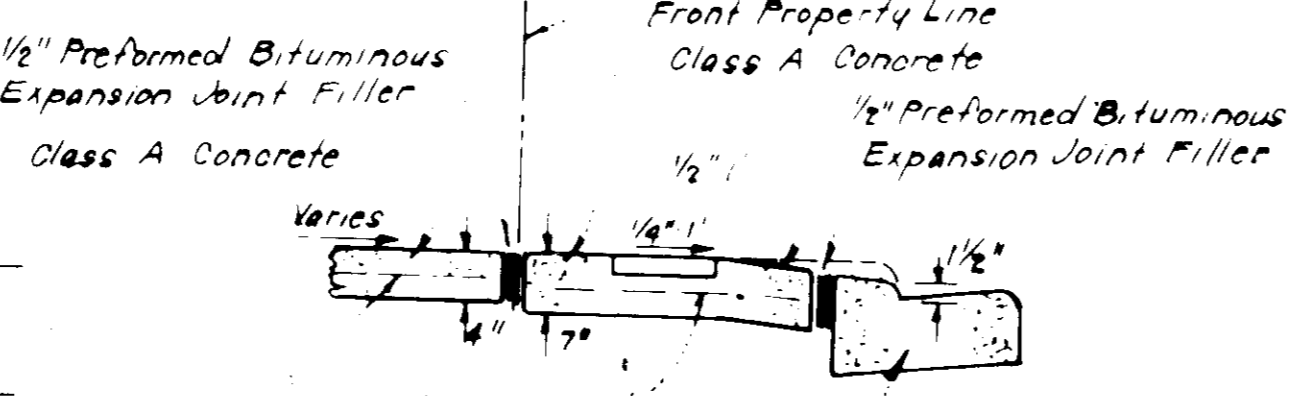
4-27-83
Date

Donald B. Sackett
DONALD B. SACKETT
Registered Land Surveyor
Md. No. 0059



DRIVEWAY ABUTTING STD. 7" COMB. CURB & GUTTER
NO SCALE

Note Materials and Construction shall be in accordance with Md. Co. Road Construction Code



APPROVED
DIVISION OF LAND DEVELOPMENT & ZONING ADMINISTRATION
HOWARD COUNTY, MARYLAND
DATE 5-17-83

- GENERAL NOTES:**
1. The Land included in this plan is zoned R-5C
 2. The Lots shown on this plan are covered by Final Development Plan Phase 174
 3. All coordinates are based on traverse control for Columbia established by Maps, Inc. in 1968 by Purdum & Jeschke in 1968 which controls were tied to Maryland Bureau of Control Survey monuments to U.S. Coast & Geodetic Survey Monuments in the Columbia area
 4. The area covered in this submission is located on Tax Map # 42
 5. The total area included on this plan is 0.157 Acre
 6. All roadways are public and existing
 7. Any damage to County owned rights of way shall be corrected at the Developer's expense

- LEGEND:**
1. Contour Interval 2' -
 2. Existing Contour - - - - -
 3. Proposed Contour - - - - -
 4. Spot Elevation -
 5. Direction of Drainage ->
 6. Walk Out Basement -

Total number of Lot in this submission is 1

For Bearings & Distances not shown See Plat 4436

CLARK • FINEBROCK & SACKETT ENGINEERS • PLANNERS • SURVEYORS 13315 LINDENHILL DRIVE SILVER SPRING, MARYLAND 20914		
DESIGNED	REVISED SITE DEVELOPMENT PLAN LOT 167	SCALE 1"=30'
DRAWN		DRAWING 10A1
CHECKED		JOB NO. 79 093
DATE		FILE NO. 79 093 X
4-27-83	GREENBRIAR WOODS VILLAGE OF KINGS CONTRIVANCE SECTION 5 AREA 1 6th ELECTION DISTRICT HOWARD COUNTY, MARYLAND For The Ryland Group, Inc. (Col. Div.) One Knoll North Suite 503 Columbia, Md. 21045	

APPROVED FOR PUBLIC WATER AND PUBLIC SEWERAGE SYSTEMS, HOWARD COUNTY HEALTH DEPARTMENT	<i>John G. Jones</i> DATE 6-3-83
APPROVED FOR HEALTH DEPARTMENT	<i>John G. Jones</i> DATE 6-7-83
APPROVED FOR PLANNING AND ZONING	<i>John G. Jones</i> DATE 6-1-83
APPROVED FOR PUBLIC WATER AND PUBLIC SEWERAGE, STORM DRAINAGE SYSTEMS AND PUBLIC ROADS HOWARD COUNTY DEPARTMENT OF PUBLIC WORKS	<i>John G. Jones</i> DATE 6-1-83
APPROVED FOR ENGINEERING	<i>John G. Jones</i> DATE 6-1-83