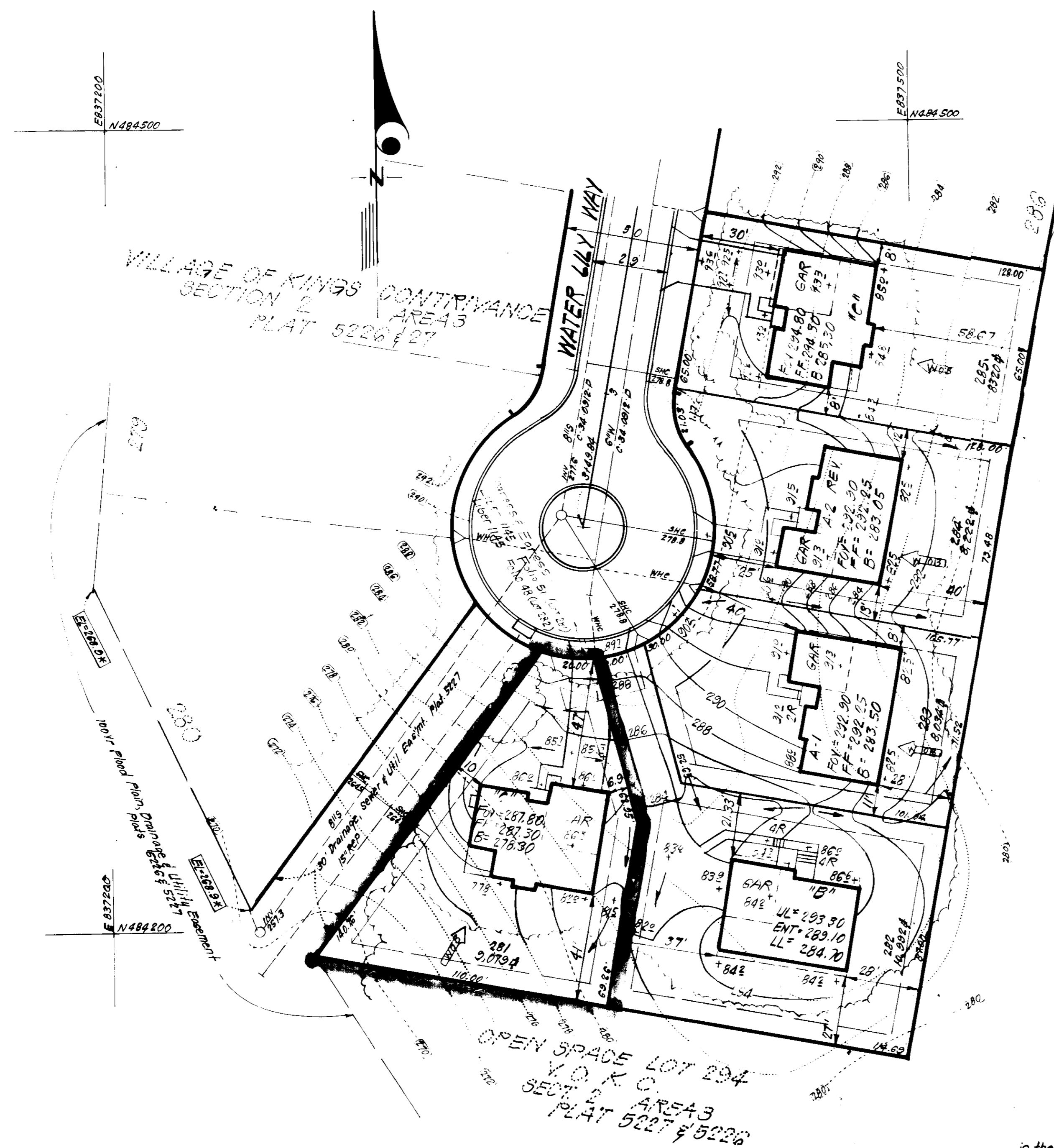


VICINITY MAP
SCALE: 1" = 2000'

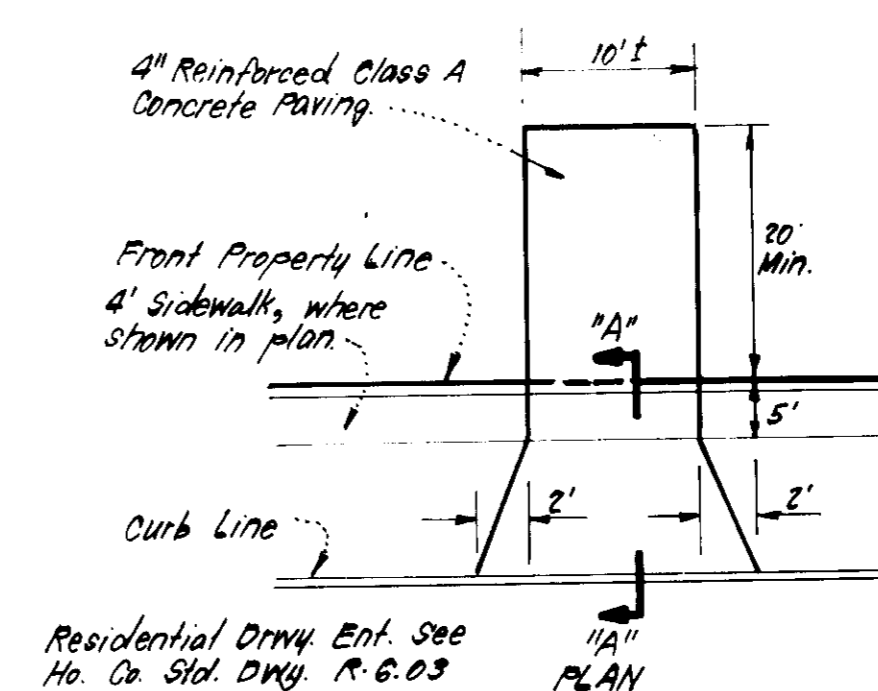


GENERAL NOTES:

1. The Land included in this plan is zoned New Town (S.F.M.D).
2. The Lots shown on this plan are covered by Final Development Plan Phase 178, Part II.
3. All coordinates shown hereon are based on Howard County Geodetic Control Traverse which is based upon the Maryland State Plane Coordinate System.
4. The area covered is located on Tax Map # 42.
5. The total area included in this plan is 0.208 Acres.
6. All roadways are public & existing.
7. Any damage to county owned rights of way or paving shall be corrected at the developer's expense.
8. Total Number of Lots: 1

LEGEND:

1. Contour Interval 2 Ft.
2. Existing Contour
3. Proposed Contour
4. Spot Elevation
5. Direction of Drainage
6. Existing Trees to be retained
7. Walk Out - Basement
8. 100 Yr Flood Plain Elevation



SECTION 'A-A'
DRIVEWAY ABUTTING MODIFIED COMB. CURB & GUTTER
NO SCALE

Note: Use Residential Driveway Entrance Ho. Co. Std. except where driveway abuts Modified Comb. Curb & Gutter.

Note: Materials and Construction shall be in accordance with the Ho. Co. Road Construction Code.

SURVEYOR'S CERTIFICATE

I hereby certify that the information contained hereon is the same as shown on previously approved S.D.P. 83-85C, with the following exception,

1. House on Lot 281 moved forward 2 feet.

I further certify that the Sediment & Erosion control measures, as previously approved, will not be affected, the grading is substantially the same as originally approved, the building setbacks comply with Howard County Zoning and Subdivision Regulations, and the lot has the same geometric configuration as shown on the respective recorded subdivision Plats.

4/19/83 Date

Donald B. Sackett
Registered Land Surveyor
Md. No. 0059

APPROVED
PLANNING BOARD
OF HOWARD COUNTY
DATE 5-4-83

PLAT REF: PLAT 5227

CLARK · FINEFROCK & SACKETT ENGINEERS · PLANNERS · SURVEYORS 11315 LOCKWOOD DRIVE · SILVER SPRING, MARYLAND 20904 · (301) 583-3400	
DESIGNED	JME
DRAWN	JME
CHECKED	JME
DATE	5-4-83
REVISED SITE DEVELOPMENT PLAN LOT 281 COLUMBIA VILLAGE OF KINGS CONTRIVANCE SECTION 2 6TH ELECTION DISTRICT HOWARD COUNTY, MARYLAND FOR: ALLAN HOMES, INC. P.O. Box 1059 Columbia, Md 21046	
SCALE	1" = 30'
DRAWING	10F1
JOB NO.	82-072
FILE NO.	82-072-X
DATE	4-18-83

APPROVED FOR PUBLIC WATER AND PUBLIC SEWERAGE SYSTEMS, HOWARD COUNTY HEALTH DEPARTMENT	5-24-83
APPROVED FOR HOWARD COUNTY OFFICE OF PLANNING & ZONING	5-26-83
APPROVED FOR PUBLIC WATER AND PUBLIC SEWERAGE, STORM DRAINAGE SYSTEMS AND PUBLIC ROADS, HOWARD COUNTY DEPARTMENT OF PUBLIC WORKS	5-23-83
APPROVED FOR PUBLIC WATER AND PUBLIC SEWERAGE, STORM DRAINAGE SYSTEMS AND PUBLIC ROADS, HOWARD COUNTY DEPARTMENT OF PUBLIC WORKS	5-23-83