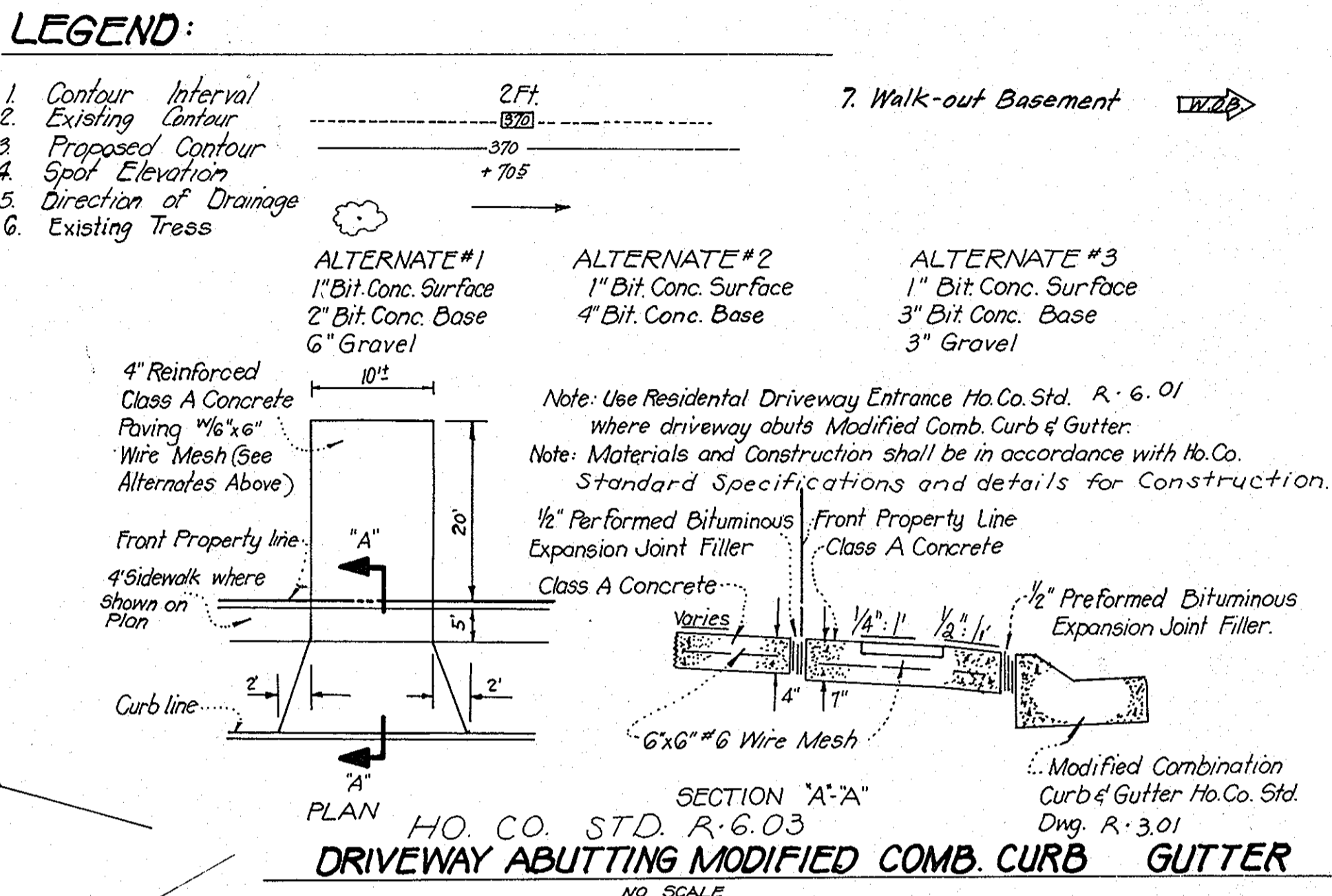
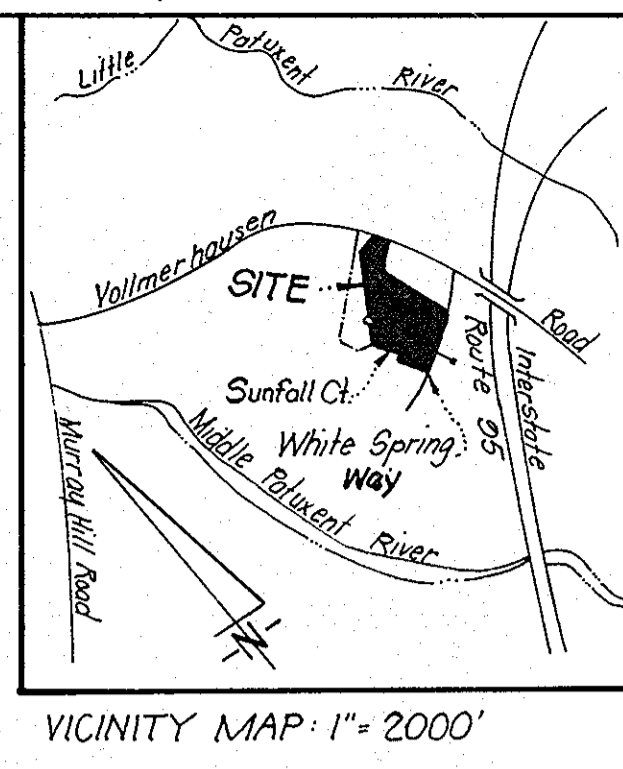


VILLAGE OF KINGS CONTRIVANCE
SECTION 3
PLAT NO. 4235 & 4237
AREA 1

- GENERAL NOTES:**
- The land included in this plan is zoned: New Town S.F. Md.
 - The lots shown on this plan are covered by Final Development Plan Phase 169, Part II, Plat 3054 A 231/252
 - All coordinates are based on traverse controls for Columbia established by Maps Inc., in 1968, by Pyramid & Jeschke which controls were tied to Maryland Bureau of Control survey monuments and U.S. Coast & Geodetic Survey monuments in the Columbia area.
 - The area covered in this submission is located on Tax Map # 42
 - The total area included on this plan is 3.54 Acres.
 - All roadways are public and existing.
 - Any damage to county owned rights of way shall be corrected at the developer's expense.
 - Total Number of Lots: 10.



NO.	REVISION	DATE
1	Hse & Gr. rev. on Lot 125 from F-2 to J-2	2-9-83
2	Hse & Gr. rev. on Lot 126 from J-2 to C-2	2-22-83
3	Hse & Gr. rev. on Lot 125 from J-2 to A-2	3-9-83
4	Hse & Gr. rev. on Lots 135-144	4-18-83

SURVEYOR'S CERTIFICATE

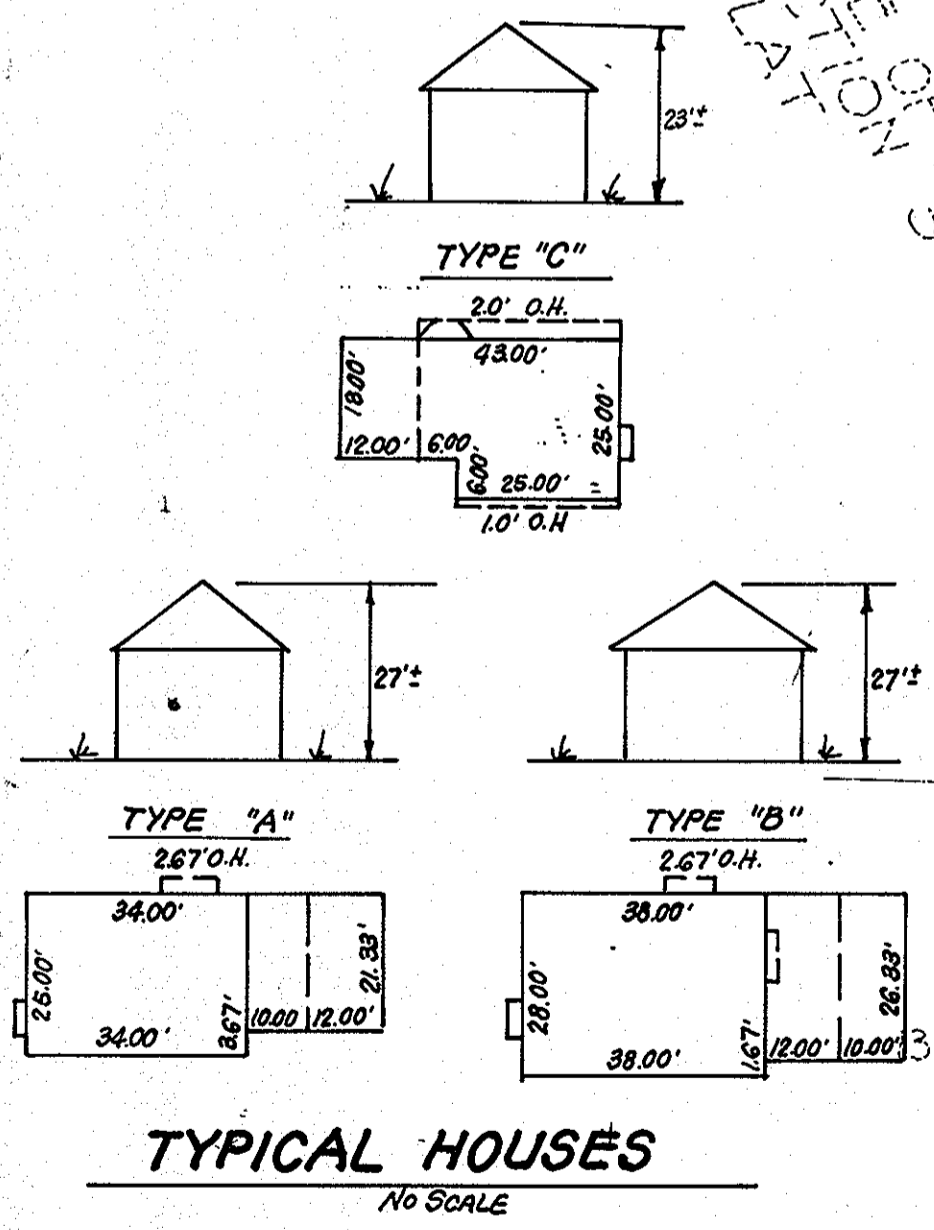
I hereby certify that the information contained herein is the same as shown on previously approved SDP 81-152C, with the following exceptions:

- House Type and Grading has been revised on Lots 135 thru 144.

I further certify that the Sediment & Erosion Control measures, as previously approved, will not be affected, the grading is substantially the same as originally approved, the building setbacks comply with Howard County Zoning and Subdivision Regulations, and the lot has the same geometric configuration as shown on the respective recorded subdivision.

4-18-83
Date

Donald B. Sackett
DONALD B. SACKETT
Registered Land Surveyor
Md. No. 6059



APPROVED FOR PUBLIC WATER AND PUBLIC SEWERAGE SYSTEMS,
HOWARD COUNTY HEALTH DEPARTMENT
James G. Sullivan 5-24-83
COUNTY HEALTH OFFICER DATE

APPROVED HOWARD COUNTY OFFICE OF PLANNING & ZONING
Thomas J. Harris 5-26-83
PLANNING DIRECTOR DATE

CHIEF DIVISION OF LAND DEVELOPMENT & ZONING ADMIN. DATE
5-26-83

APPROVED FOR PUBLIC WATER AND PUBLIC SEWERAGE,
STORM DRAINAGE SYSTEMS AND PUBLIC ROADS
HOWARD COUNTY DEPARTMENT OF PUBLIC WORKS
Way F. Neumeier 5-23-83
DIRECTOR DATE

Robert J. [Signature] 5-23-83
CHIEF BUREAU OF ENGINEERING DATE

APPROVED
DIVISION OF LAND DEVELOPMENT &
ZONING ADMINISTRATION
HOWARD COUNTY, MARYLAND
DATE 5-11-83

Plat Reference: 4813

		CLARK • FINEFROCK & SACKETT ENGINEERS • PLANNERS • SURVEYORS 11315 LOCKWOOD DRIVE SILVER SPRING, MARYLAND 20904 (301) 593-3400
DESIGNED J.M.E.	REVISED SITE DEVELOPMENT PLAN LOTS 135 THRU 144	
DRAWN D.B.R.	SCALE 1" = 30'	
CHECKED J.M.E.	DRAWING 10F1	
DATE April 18, 1983	JOB NO. 83-034	
	FILE NO. 83-034-X	

OPEN SPACE LOT 157
VILLAGE OF KINGS CONTRIVANCE
SECTION 3
PLAT NO. 4235 & 4237
AREA 2