

SURVEYOR'S CERTIFICATE

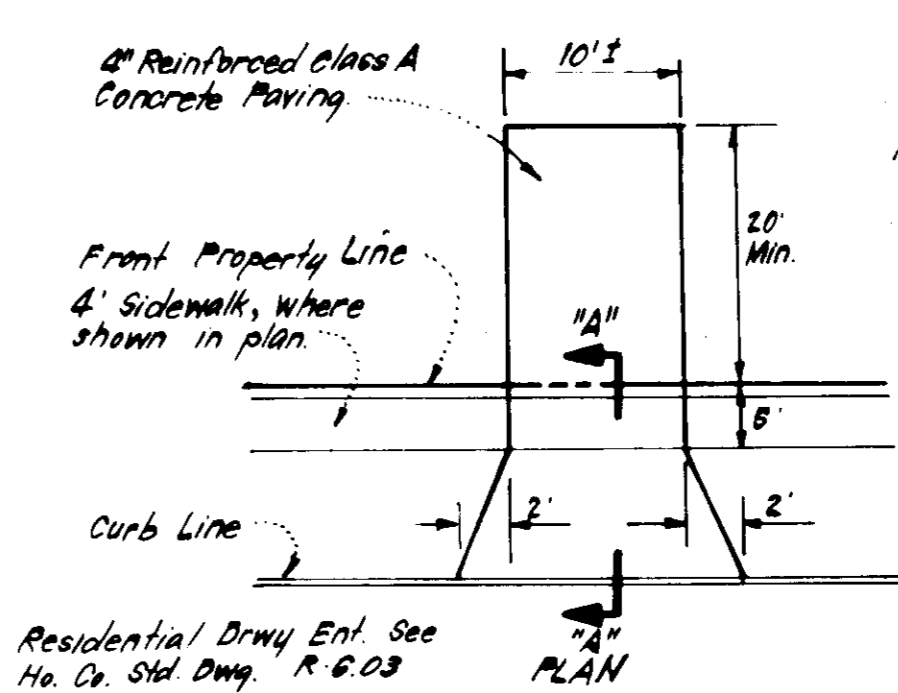
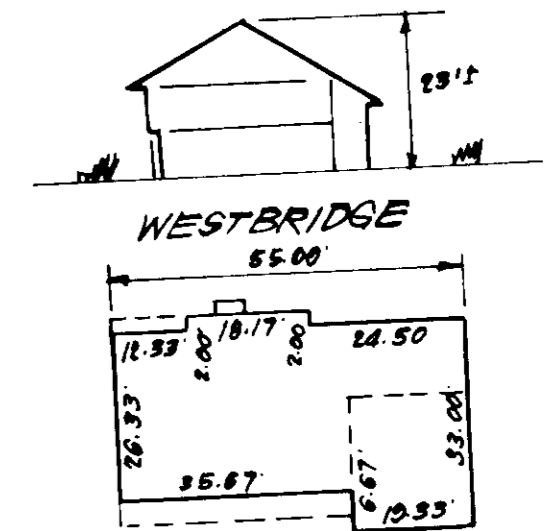
I hereby certify that the information contained hereon is the same as shown on previously approved S.D.P. 83-52C, with the following exception;

1. House Type and Grading has been revised on Lot 106

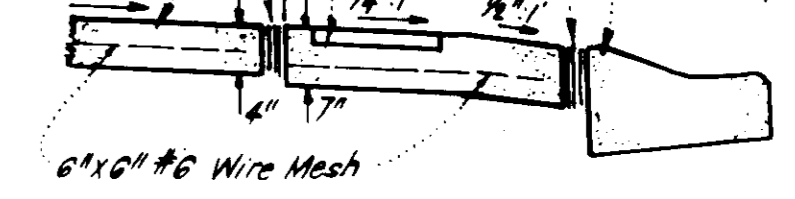
I further certify that the Sediment & Erosion control measures, as previously approved, will not be affected, the grading is substantially the same as originally approved, the building setbacks comply with Howard County Zoning and Subdivision Regulations, and the lot has the same geometric configuration as shown on the respective recorded subdivision Plat.

4-15-83
Date

Donald B. Sackett
DONALD B. SACKETT
Registered Land Surveyor
Md. No. 0059



Note: Use Residential Driveway Entrance, Ho. Co. Std. except where driveway abuts Modified Comb Curb & Gutter.
Note: Materials and Construction shall be in accordance with the Ho. Co. Road Construction Code.
1/2" Preformed Bituminous Expansion Joint Filler
Class A Concrete
Front Property Line
Class A Concrete
1/2" Preformed Bit. Exp. Joint Filler
Mod. Comb Curb & Gutter, Ho. Co. Std. Dwg. R-3.01



DRIVEWAY ABUTTING MODIFIED COMB CURB & GUTTER
No SCALE

GENERAL NOTES:

- The Land included in this plan is zoned 'New Town' (SFMD).
- The Lots shown on this plan are covered by Final Development Plan Phase 178, Part III.
- All coordinates shown hereon are based on Howard County Geodetic Control Traverse which is based upon the Maryland State Plane Coordinate System.
- The area covered is located on Tax Map # 82.
- The total area included in this plan is 0.247 Acres.
- All roadways are public & existing.
- Any damage to county owned rights of way or paving shall be corrected at the developer's expense.
- Total Number of Lots: 1

The developer or contractor shall contact the Construction Inspection/Survey Division 24 hours in advance of commencement of work at 792-7272

APPROVED
DIVISION OF LAND DEVELOPMENT & ZONING ADMINISTRATION
HOWARD COUNTY, MARYLAND
DATE 5-6-83
[Signature]

LEGEND:

- Contour Interval 2' ±
- Existing Contour
- Proposed Contour
- Spot Elevation + 0.05
- Direction of Drainage
- Existing Dries to be Retained
- Walkout Basement

REVISION	DATE
1. Change Lot 106 from 2.5 to 3.0 acres	12-29-82
2. Change Lot 106 from 2.5 to 3.0 acres	12-29-82
3. Change Lot 106 from 2.5 to 3.0 acres	12-29-82
4. Change Lot 106 from 2.5 to 3.0 acres	12-29-82
5. Change Lot 106 from 2.5 to 3.0 acres	12-29-82
6. Change Lot 106 from 2.5 to 3.0 acres	12-29-82
7. Change Lot 106 from 2.5 to 3.0 acres	12-29-82
8. Change Lot 106 from 2.5 to 3.0 acres	12-29-82
9. Change Lot 106 from 2.5 to 3.0 acres	12-29-82
10. Change Lot 106 from 2.5 to 3.0 acres	12-29-82

APPROVED FOR PUBLIC WATER AND PUBLIC SEWERAGE SYSTEMS HOWARD COUNTY HEALTH DEPARTMENT	<i>[Signature]</i> DATE 5-24-83
APPROVED HOWARD COUNTY OFFICE OF PLANNING & ZONING	<i>[Signature]</i> DATE 5-26-83
APPROVED DIVISION OF LAND DEVELOPMENT & ZONING ADMINISTRATION	<i>[Signature]</i> DATE 5-26-83
APPROVED FOR PUBLIC WATER AND PUBLIC SEWERAGE STORM DRAINAGE SYSTEMS AND PUBLIC ROADS HOWARD COUNTY DEPARTMENT OF PUBLIC WORKS	<i>[Signature]</i> DATE 5-23-83
APPROVED FOR PUBLIC WATER AND PUBLIC SEWERAGE STORM DRAINAGE SYSTEMS AND PUBLIC ROADS HOWARD COUNTY DEPARTMENT OF PUBLIC WORKS	<i>[Signature]</i> DATE 5-23-83

PLAT REF. PLAT 4929

CLARK · FINEFROCK & SACKETT
ENGINEERS · PLANNERS · SURVEYORS
11315 LOCKWOOD DRIVE SILVER SPRING, MARYLAND 20904 (301) 593-3400

DESIGNED	SCALE
JME	1"=30'
DRAWN	DRAWING
JME	1061
CHECKED	JOB NO.
JME	82-038
DATE	FILE NO.
4-15-83	82-038-X

REVISED SITE DEVELOPMENT PLAN LOT 106
COLUMBIA
VILLAGE OF KINGS CONTRIVANCE
SECTION 2 AREA 3
6TH ELECTION DISTRICT
HOWARD COUNTY, MARYLAND
FOR: MULTE HOME CORPORATION
7223 Parkway Drive, Suite 106
Manover, Md. 21078