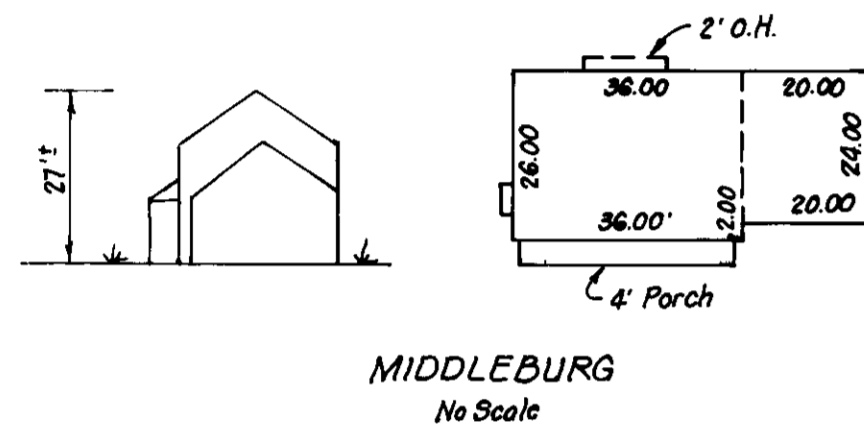
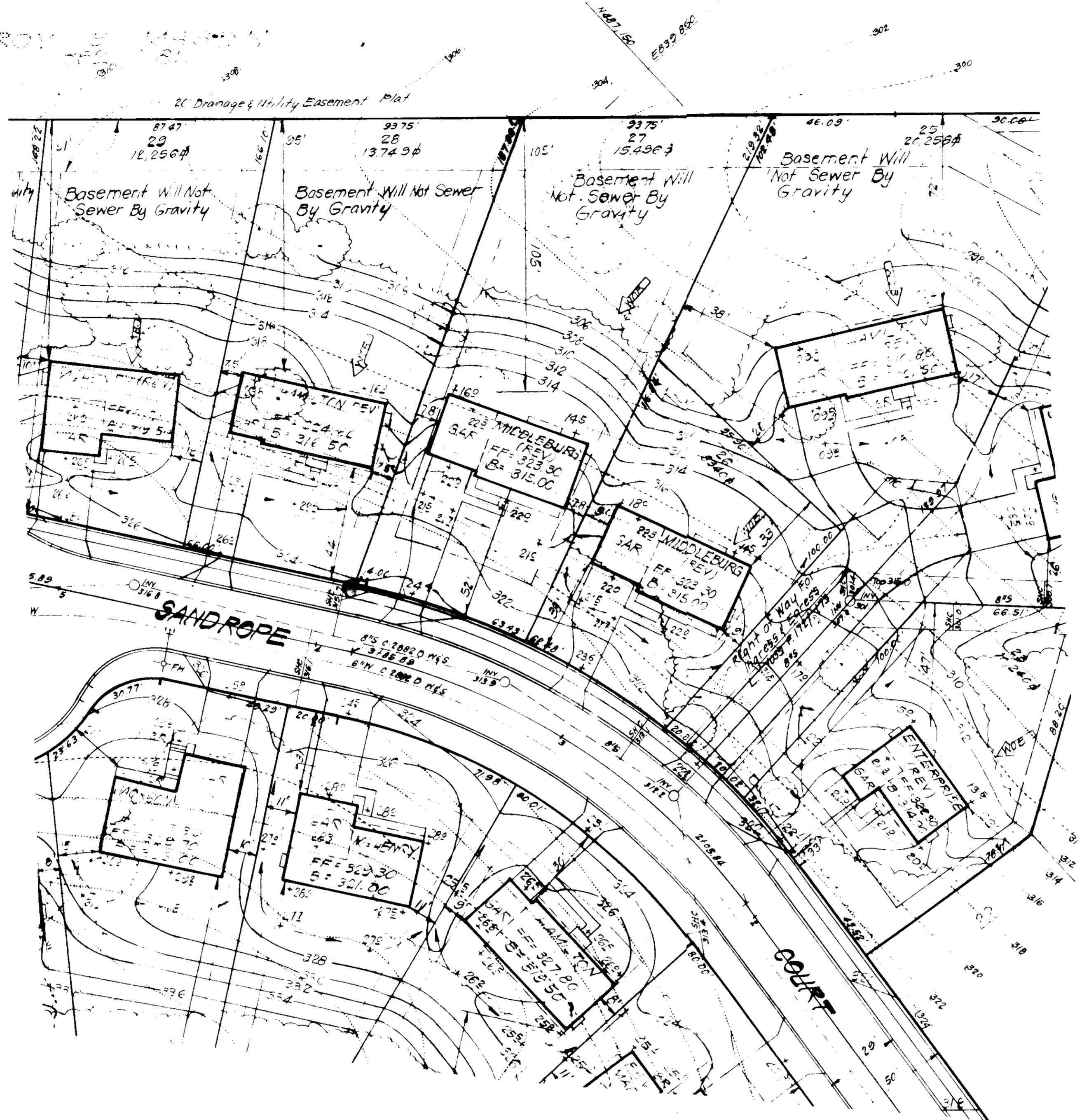
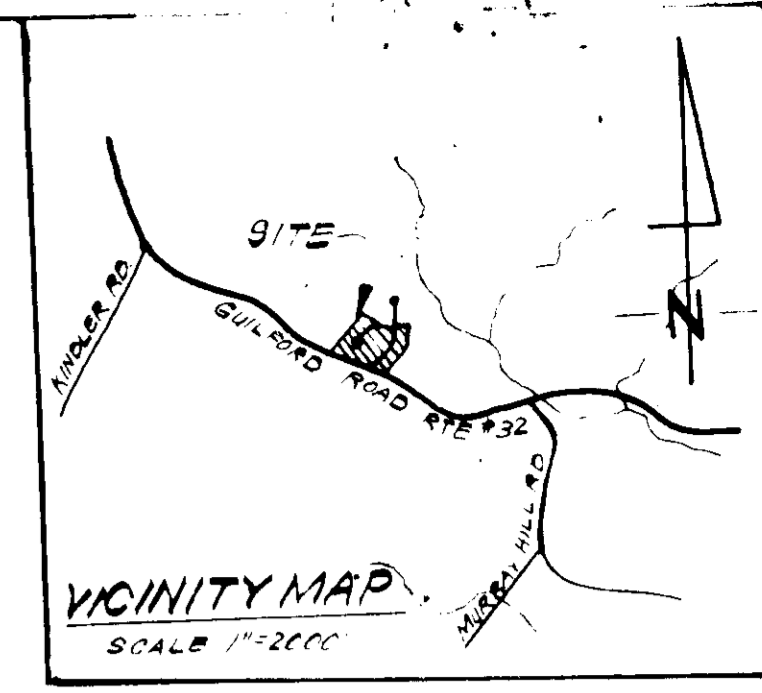


**GENERAL NOTES:**

- 1 The land included in this plan is zoned Newtown S-M.D.
- 2 The lots shown on this plan are covered by Final Development Plan Phase 178 Part I.
- 3 All control notes are based on traverse controls for Columbia established by Mips Inc. in 1968 by Parolun & Jeske in 1968, which controls were tied to Maryland Bureau of Control Survey monuments and to US Coast & Geodetic Survey monuments in the Columbia area.
- 4 The area covered in this submission is located on Tax Map # 42.
- 5 The total area included on this plan is 0.356 Acres.
- 6 All roadways are public & existing.
- 7 Any damage to county owned right of way shall be corrected at the developer's expense.



**SURVEYOR'S CERTIFICATE**

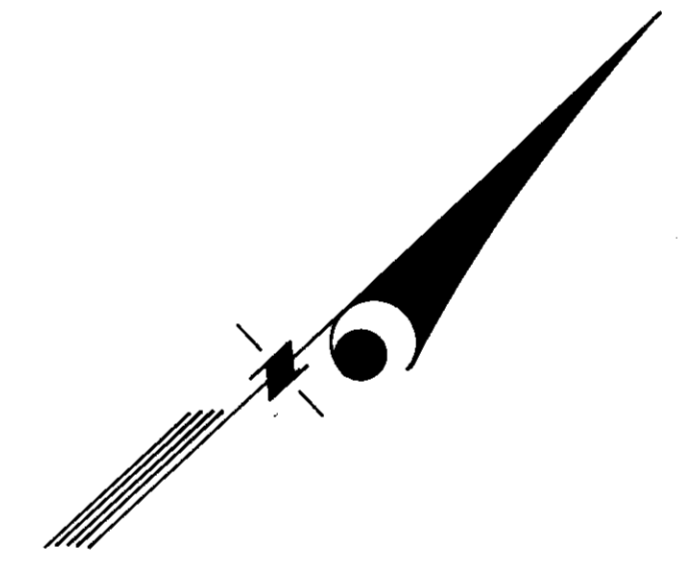
I hereby certify that the information contained herein is the same as shown on previously approved SDP 81-61-C, with the following exception;

1. House Type and Grading has been revised on Lot 27.

I further certify that the Sediment & Erosion control measures, as previously approved, will not be affected, the grading is substantially the same as originally approved, the building setbacks comply with Howard County Zoning and Subdivision Regulations, and the lot has the same geometric configuration as shown on the respective recorded subdivision Plat.

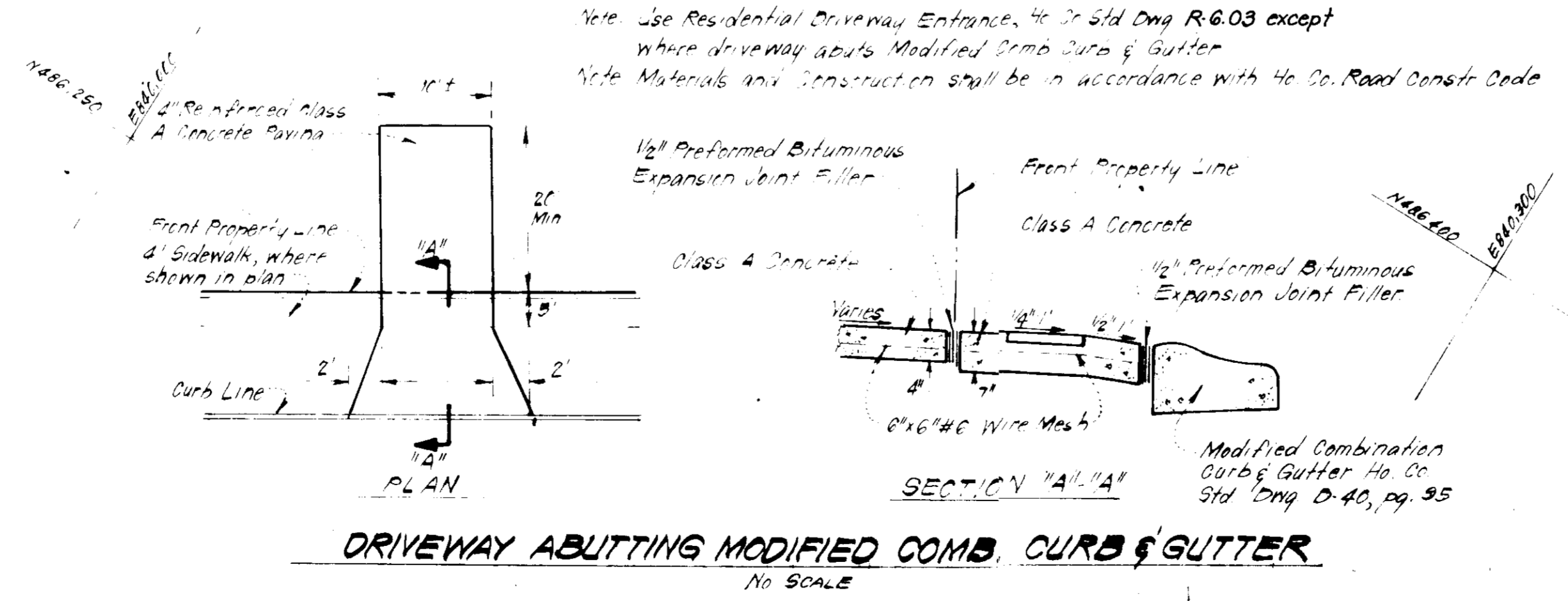
April 5, 1983  
Date

*Donald B. Sackett*  
DONALD B. SACKETT  
Registered Land Surveyor  
Md. No. 6059



The contractor or developer shall contact the Construction Inspection/Survey Division, 24 hours in advance of commencement of work at 792-7272.

- LEGEND:**
- 1 Contour Interval 2 F.
  - 2 Existing Contour
  - 3 Proposed Contour
  - 4 Spot Elevation
  - 5 Direction of Drainage
  - 6 Exist Trees to be retained
  - 7 Walk Out Basement
  - 8 Retaining Wall
  - 9 Total Number of Lots in this submission 1



Note: Basements will not sewer by gravity on lot 27.

APPROVED FOR PUBLIC WATER AND PUBLIC SEWERAGE SYSTEMS, HOWARD COUNTY HEALTH DEPARTMENT	<i>James P. Jones</i>	5-10-83
HOWARD COUNTY OFFICE OF PLANNING & ZONING	<i>James P. Jones</i>	5-10-83
CHIEF DIVISION OF LAND DEVELOPMENT & ZONING ADMIN.	<i>William M. ...</i>	5-10-83
APPROVED FOR PUBLIC WATER AND PUBLIC SEWERAGE, STORM DRAINAGE SYSTEMS AND PUBLIC ROADS, HOWARD COUNTY DEPARTMENT OF PUBLIC WORKS	<i>William M. ...</i>	5-6-83
CHIEF BUREAU OF ENGINEERING	<i>William M. ...</i>	5-6-83

APPROVED  
DIVISION OF LAND DEVELOPMENT & ZONING ADMINISTRATION  
HOWARD COUNTY, MARYLAND  
DATE 4-25-83  
*W. J. ...*

PLAT REFERENCE: PLAT # 4672

CLARK • FINEFROCK & SACKETT ENGINEERS • PLANNERS • SURVEYORS 11315 LOCKWOOD DRIVE SILVER SPRING, MARYLAND 20904 (301) 593 1400		
DESIGNED J.M.E.	REVISED SITE DEVELOPMENT PLAN LOT 27	SCALE 1"=30'
DRAWN K.M.W.	<b>COLUMBIA</b>	DRAWING 1 of 1
CHECKED J.M.E.	VILLAGE OF KINGS CONTRIVANCE SECTION 2 AREA 3 6th ELECTION DISTRICT HOWARD COUNTY, MARYLAND	JOB NO. 81-072
DATE 4-6-83	FOR: The Ryland Group, Inc. (Columbia Div.) One Knoll North Suite 503 Columbia, Md. 21045	FILE NO. 81-072-X

SDP-83-158c