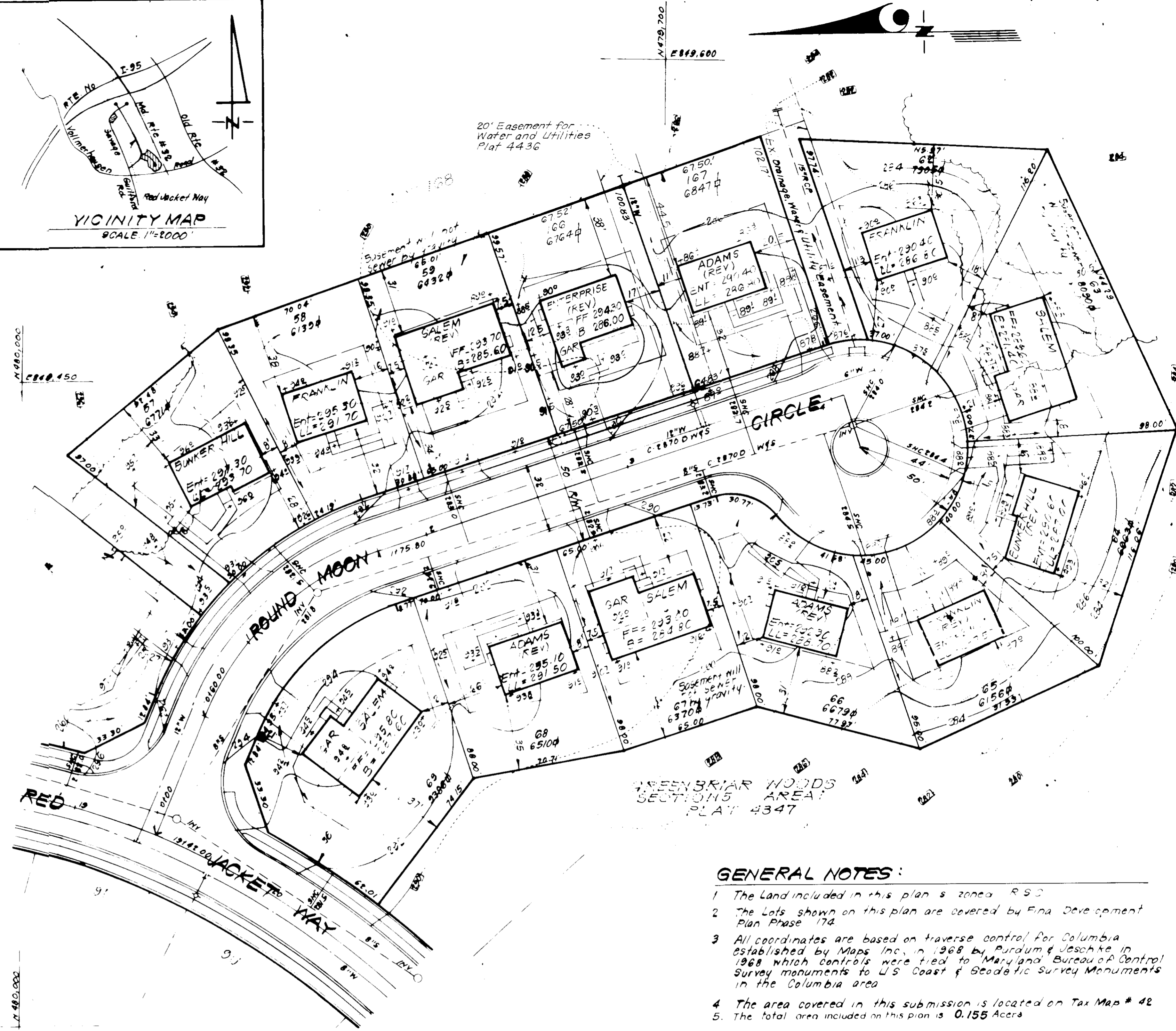
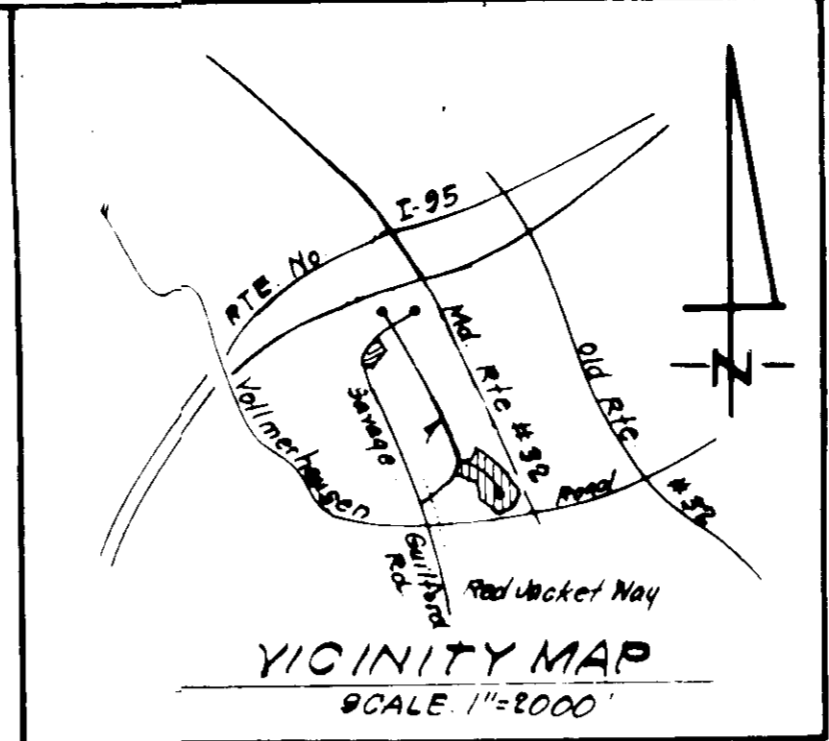


ENTERPRISE
NO SCALE



SURVEYOR'S CERTIFICATE

I hereby certify that the information contained hereon is the same as shown on previously approved S.D.P. 80-143 with the following exceptions;

- 1. House Type and Grading has been revised on Lot 166 a resubdivision of Lot 60

I further certify that the Sediment & Erosion control measures, as previously approved, will not be affected, the grading is substantially the same as originally approved, the building setbacks comply with Howard County Zoning and Subdivision Regulations, and the lot has the same geometric configuration as shown on the respective recorded subdivision Plat.

4/5/83
Date

Donald B. Sackett
DONALD B. SACKETT
Registered Land Surveyor
Md. No. 6059

GENERAL NOTES:

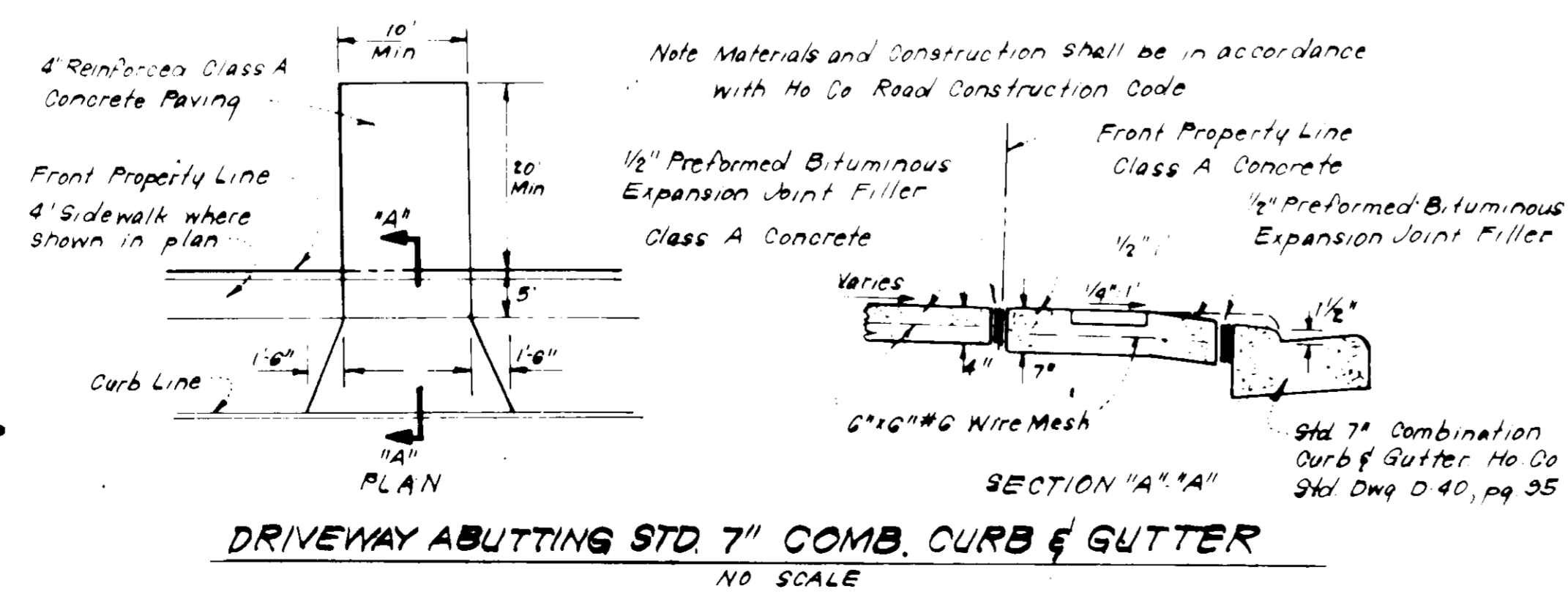
1. The Land included in this plan is zoned R 9 D
2. The Lots shown on this plan are covered by Final Development Plan Phase 174
3. All coordinates are based on traverse control for Columbia established by Maps Inc. in 1968 by Purdum & Joschke in 1968 which controls were tied to Maryland Bureau of Control Survey monuments to U.S. Coast & Geodetic Survey Monuments in the Columbia area
4. The area covered in this submission is located on Tax Map # 42
5. The total area included on this plan is 0.155 Acres
6. All road ways are public and existing
7. Any damage to County owned rights of way shall be corrected at the Developer's expense

LEGEND:

1. Contour Interval 2'-
2. Existing Contour 3'-
3. Proposed Contour 3'-
4. Spot Elevation +105
5. Direction of Drainage
6. Walk Out Basement

Total number of Lot in this submission is 1

For Bearings & Distances not shown See plat 4436



DRIVEWAY ABUTTING STD. 7" COMB. CURB & GUTTER
NO SCALE

Building Restriction Lines
Front 25 FT
Side 7.5 FT
Rear 30 FT
Unless otherwise shown

No.	Revisions	Date
1	House change from Lot 21 from Title # 4-1-80	11-5-80
2	Lot 166 & 167 dimensions change on Lots 60 & 61 to 166 & 167	1-7-80
3	Use Type & Grading rev on Lot 167 from Adams to Adams Rev. on Lot 25 from Adams Rev. to Franklin Rev.	1-28-81
4	Use Type & Gr. rev on Lot 166 from Adams to Enterprise	3-28-83

APPROVED
DIVISION OF LAND DEVELOPMENT &
ZONING ADMINISTRATION
HOWARD COUNTY, MARYLAND
DATE 5-4-83

CLARK • FINEROCK & SACKETT ENGINEERS • PLANNERS • SURVEYORS 11315 LICKWILL DRIVE SILVER SPRING, MARYLAND 20904 301-543-3418		
DESIGNED	REVISED SITE DEVELOPMENT PLAN LOT 166	SCALE 1"=30'
DRAWN	GREENBRIAR WOODS	DRAWING 10A-1
CHECKED	WILLAGE OF KINGS CENTERWAY SECTION 5 AREA 6TH ELECTION DISTRICT	JOB NO 79 093
DATE	HOWARD COUNTY, MARYLAND	FILE NO 79 093-X
FOR	The Ryland Group, Inc. (C&D) Div. One Knoll North, Suite 503 Columbia, Md. 21045	

HOWARD COUNTY DEPARTMENT OF PUBLIC WATER AND PUBLIC SEWERAGE SYSTEMS, HEALTH DEPARTMENT APPROVED FOR HEALTH DEPARTMENT DATE 5-17-83
HOWARD COUNTY DEPARTMENT OF PLANNING & ZONING APPROVED FOR PLANNING & ZONING DATE 5-18-83
HOWARD COUNTY DEPARTMENT OF LAND DEVELOPMENT & ZONING ADMINISTRATION APPROVED FOR LAND DEVELOPMENT & ZONING ADMINISTRATION DATE 5-18-83
HOWARD COUNTY DEPARTMENT OF PUBLIC WATER AND PUBLIC SEWERAGE SYSTEMS AND PUBLIC ROADS APPROVED FOR PUBLIC WATER AND PUBLIC SEWERAGE SYSTEMS AND PUBLIC ROADS DATE 5-18-83
HOWARD COUNTY DEPARTMENT OF PUBLIC WORKS APPROVED FOR PUBLIC WORKS DATE 5-18-83