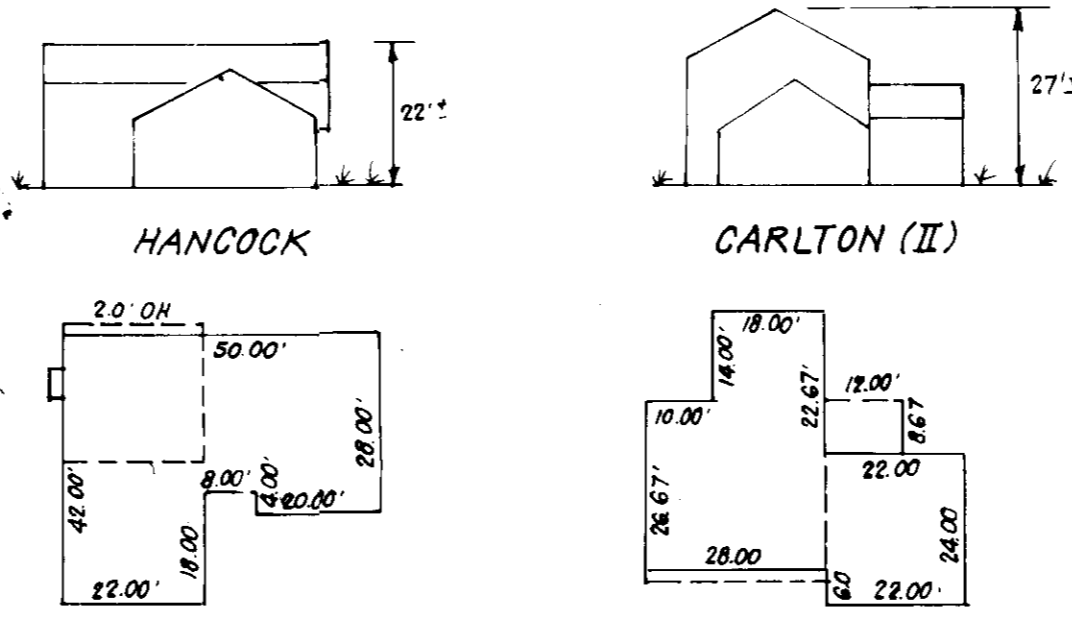
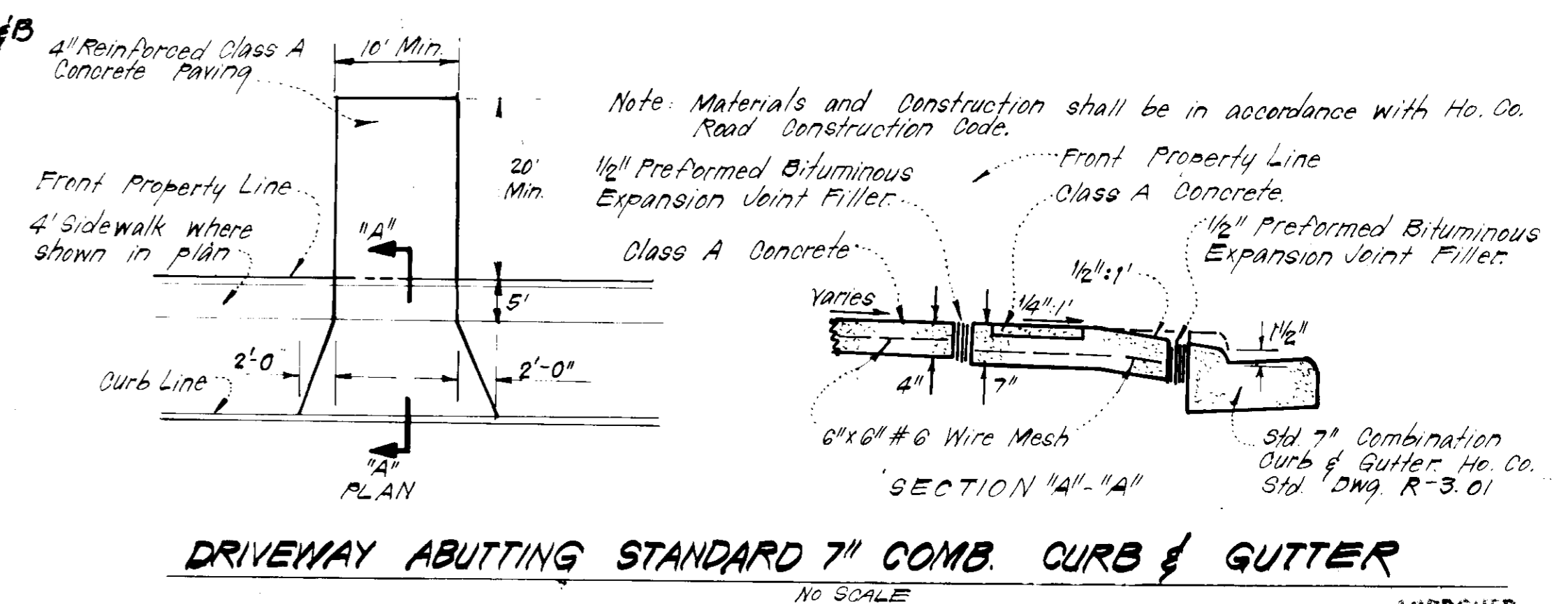


- GENERAL NOTES**
1. The Land included in this plan is zoned R90, per 10-3-77 Comprehensive Zoning Plan.
 2. All coordinates are based on Howard County Control Station "Sewell."
 3. The area covered in this submission is located on Tax Map # 36, Part of Parcel 247.
 4. The total area included in this plan is 0.5996 Acres.
 5. All roadways are public & existing.
 6. Any damage to county own-1 rights of way shall be corrected at the developer's expense.
 7. Total Number of Lots: 3
 8. The contractor or developer shall contact the Construction Inspection/Survey Division, 24-hours in advance of commencement of work at 992-2417 or 792-7272.

- LEGEND:**
1. Contour Interval 2.5'
 2. Existing Contour 970
 3. Proposed Contour 970
 4. Spot Elevation 1.70±
 5. Direction of Drainage
 6. Existing Trees to be retained
 7. Walk Out Basement
 8. 100 YR Flood Plain Elevation EL=364.0M
- * Pinus Strobus (White Pine) 2 1/2" cal. 1-1 1/2' Eft
 + Acer rubrum (Red Maple) 2 1/2" cal. 8' B



SURVEYOR'S CERTIFICATE

I hereby certify that the information contained hereon is the same as shown on previously approved SDR 81-144 & SDR 81-165 with the following exceptions:

1. House Types and Grading has been revised on Lot 11 (SDP 81-144 and Lots 27 & 29 (SDP 81-165)).

I further certify that the Sediment & Erosion control measures as previously approved, will not be affected, the grading is substantially the same as originally approved, the building setbacks comply with Howard County Zoning and Subdivision Regulations, and the lot has the same geometric configuration as shown on the respective recorded subdivision plats.

Mar 16, 1983
 Date

Donald B. Sackett
 Registered Land Surveyor
 Md. No. 6059

APPROVED
 DIVISION OF LAND DEVELOPMENT
 ZONING ADMINISTRATION
 HOWARD COUNTY, MARYLAND
 DATE 4-6-83

REVISED LANDSCAPE PLAN 10/31/83
 Plat Reference: Plat Nos. 4720 & 4721

CLARK • FINEFROCK & SACKETT
 ENGINEERS • PLANNERS • SURVEYORS
 11315 LOCKWOOD DRIVE SILVER SPRING, MARYLAND 20904 (301) 593-3400

DESIGNED JME	REVISED SITE DEVELOPMENT PLAN LOTS 11, 27 & 29 SEWELLS ORCHARD	SCALE 1"=30'
DRAWN JME		DRAWING 10/1
CHECKED K.I.W.	SECTION 1 6TH ELECTION DISTRICT HOWARD COUNTY, MARYLAND	JOB NO. 81-025
DATE March, 1983	FOR: DIVERSIFIED HOUSING CORP Suite 211 American City Bldg Columbia, Md. 21044	FILE NO. 81-025-X

APPROVED FOR PUBLIC WATER AND PUBLIC SEWERAGE SYSTEMS,
 HOWARD COUNTY HEALTH DEPARTMENT

APPROVED HOWARD COUNTY OFFICE OF PLANNING & ZONING

APPROVED FOR PUBLIC WATER AND PUBLIC SEWERAGE,
 STORM DRAINAGE SYSTEMS AND PUBLIC ROADS
 HOWARD COUNTY DEPARTMENT OF PUBLIC WORKS

NOTE:

Street trees shall be planted by the Developer, Orchard's Assoc./BTR Realty, Inc., at a rate of at least one tree per 40' of lot frontage, and in accordance with Section 18.131 of the Subdivision and Land Development Regulations of Ho. Co.