

SURVEYOR'S CERTIFICATE

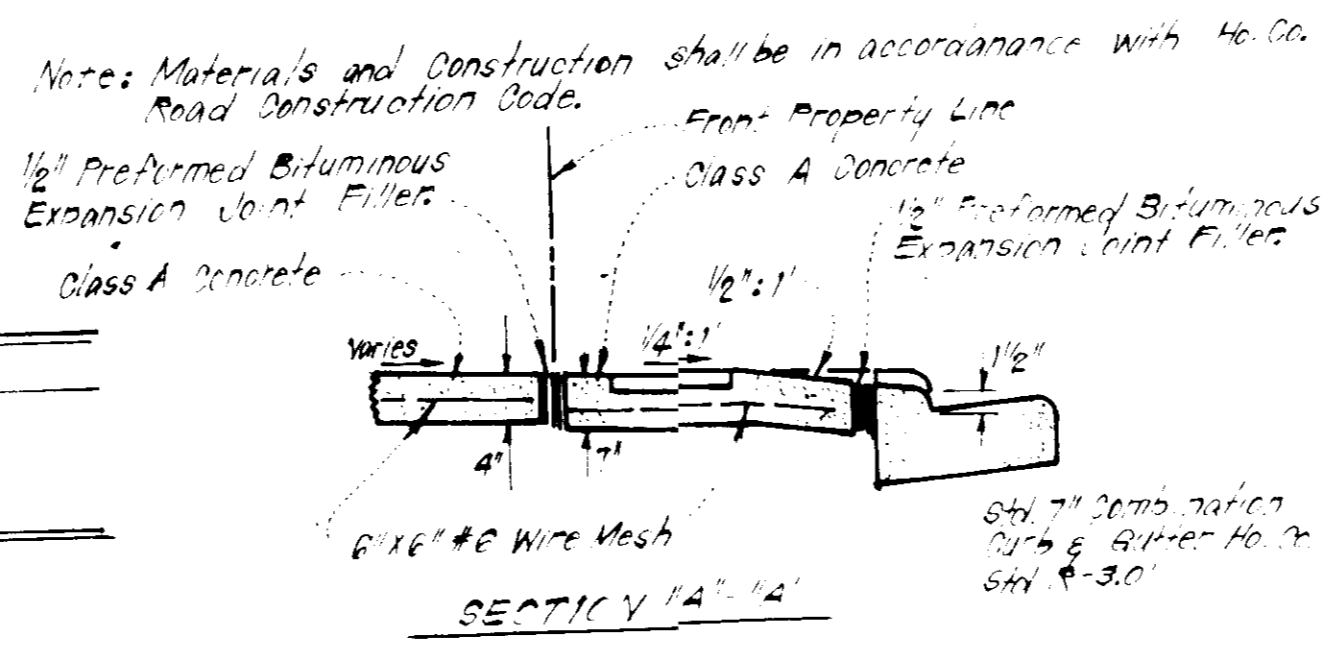
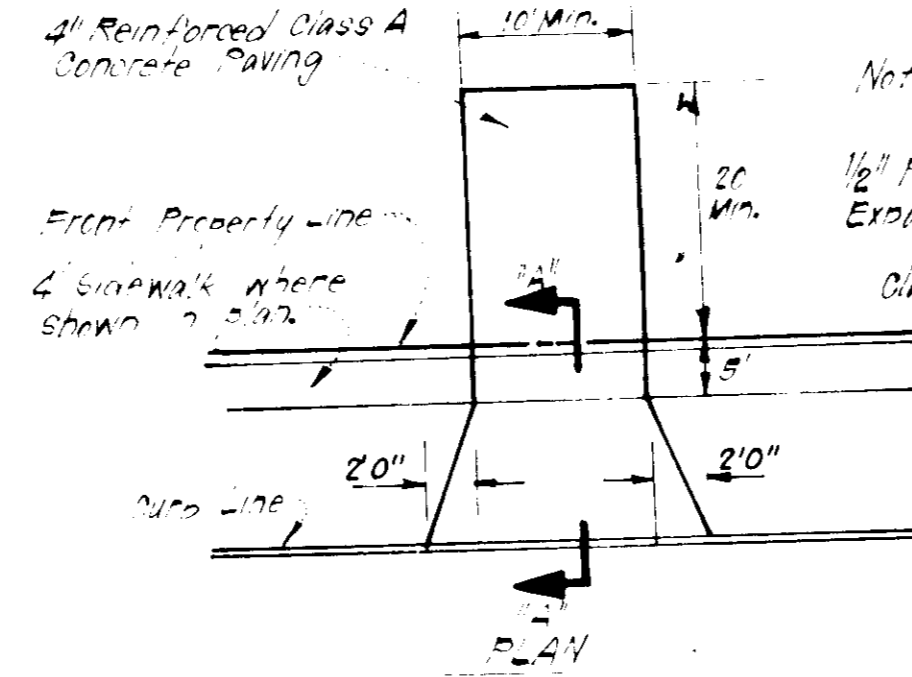
I hereby certify that the information contained herein is the same as shown on previously approved S.D.P. 81-187 with the following exception:

1. House Types and Grading has been revised on Lots 19, 67 and 79

I further certify that the Sediment & Erosion control measures, as previously approved, will not be affected, the grading is substantially the same as originally approved, the building setbacks comply with Howard County Zoning and Subdivision Regulations, and the lots have the same geometric configuration as shown on the respective recorded subdivision Plats.

MAR. 8, 1983
Date

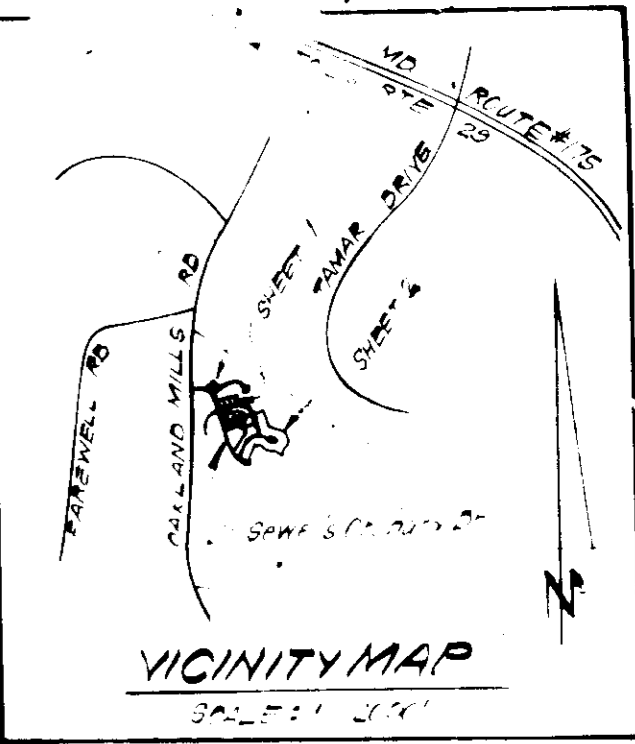
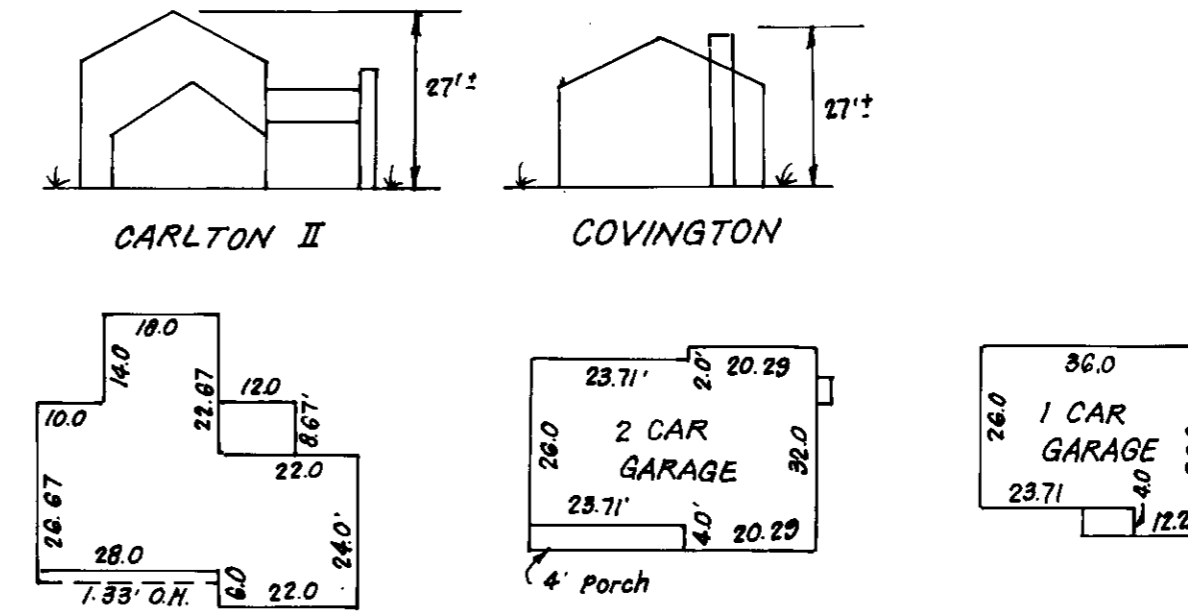
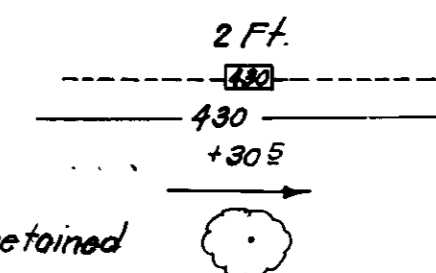
Donald B. Sackett
DONALD B. SACKETT
Registered Land Surveyor
Md. No. 6059



DRIVEWAY ABUTTING STD 7\"/>

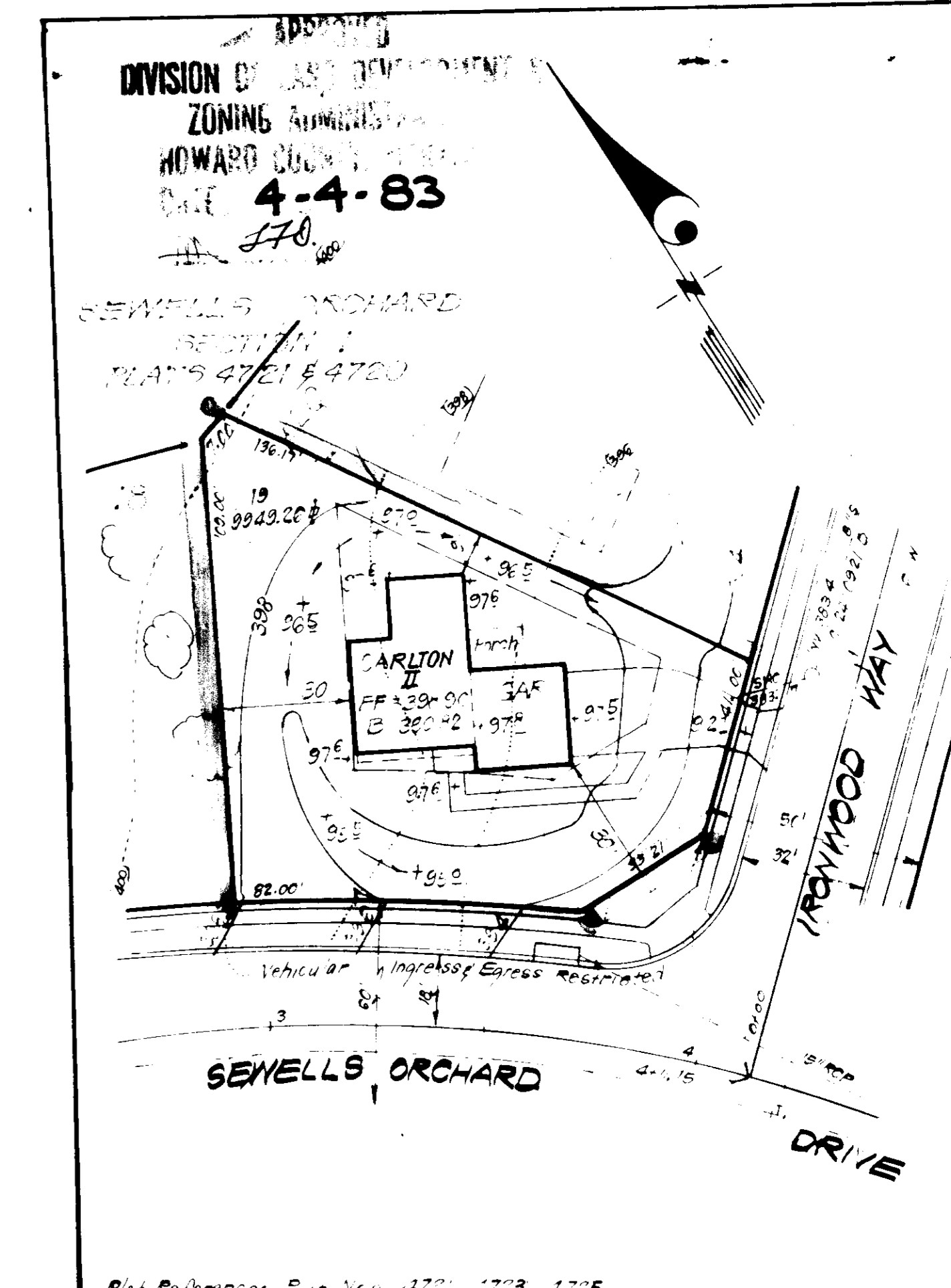
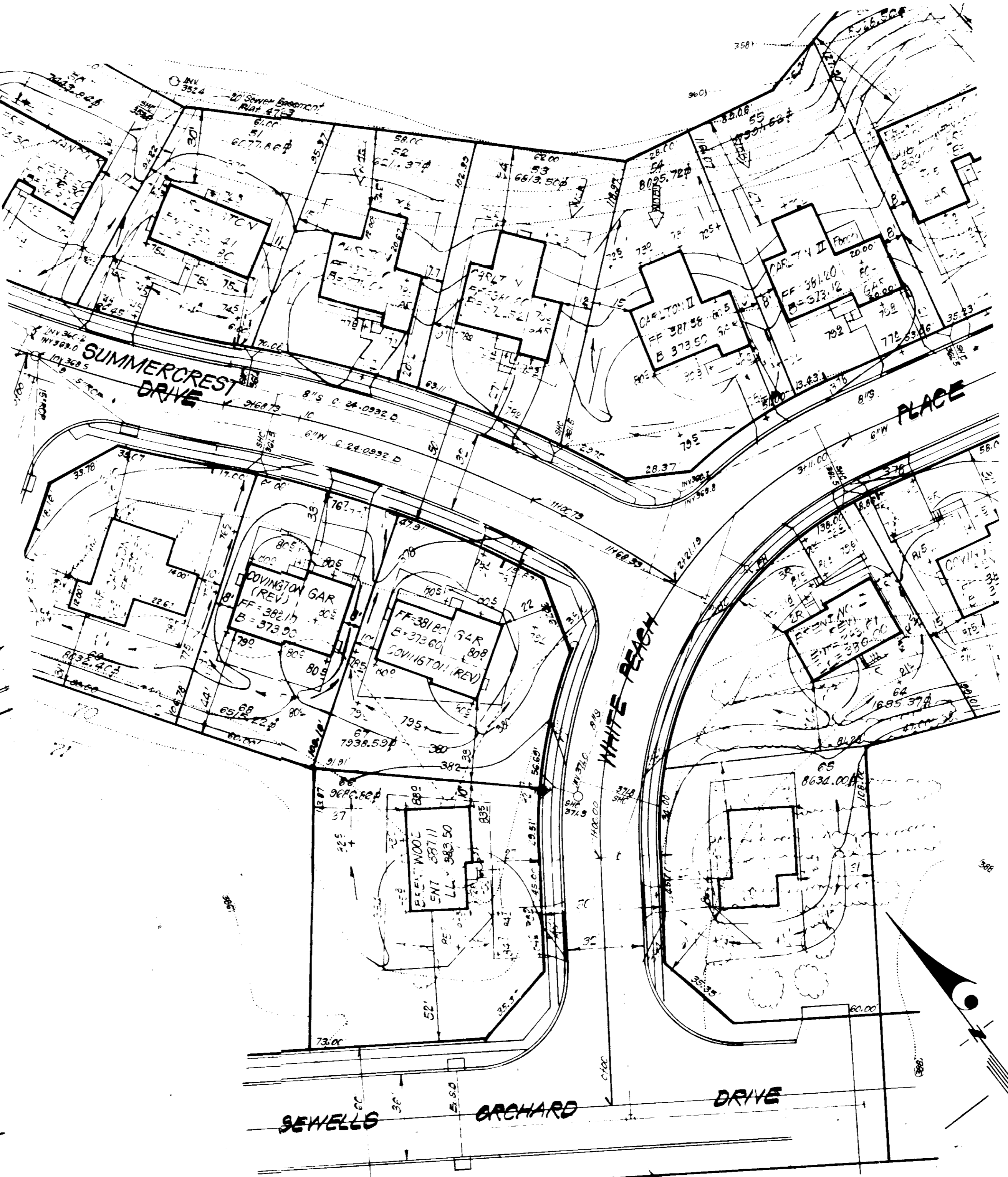
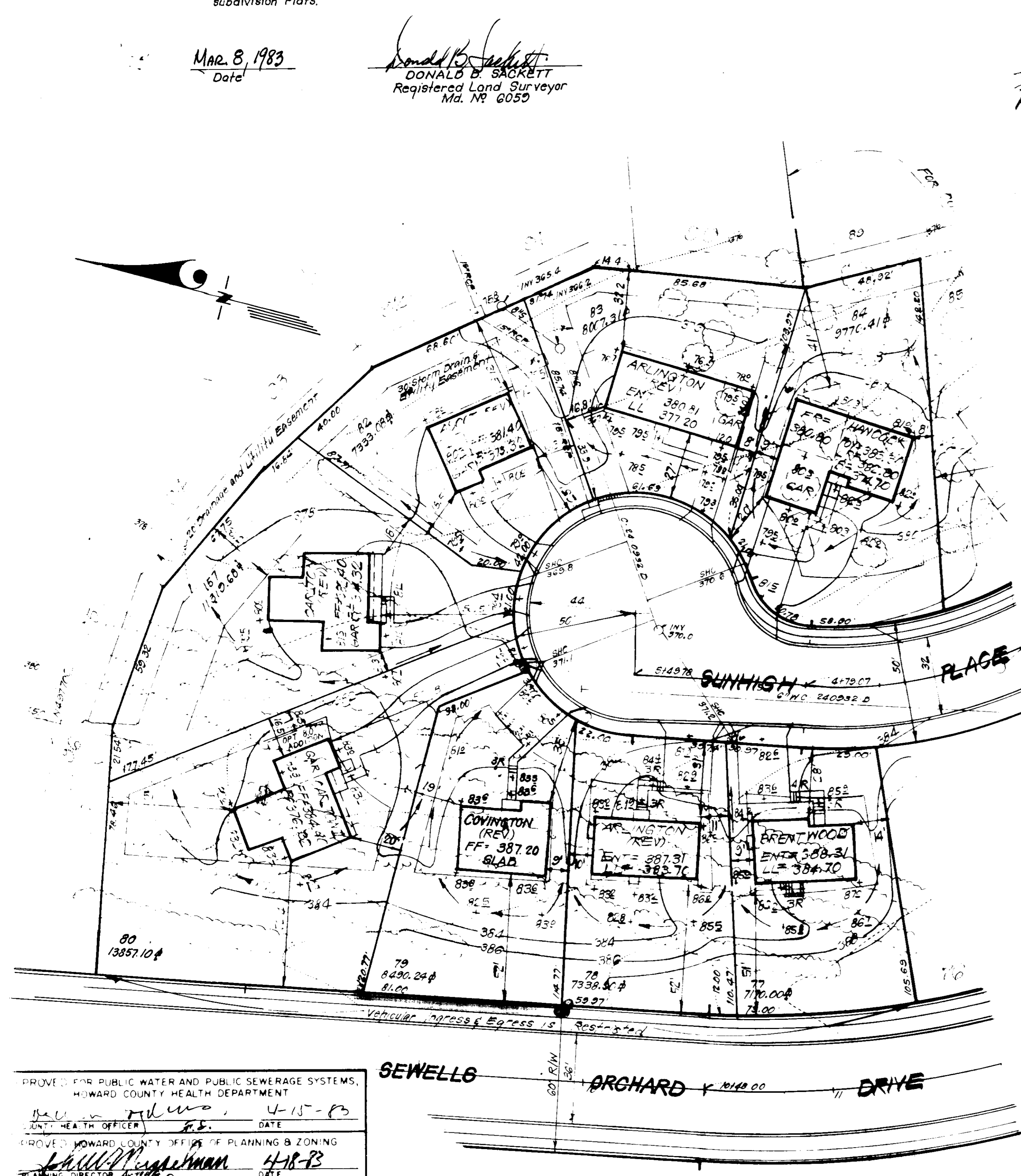
LEGEND:

1. Contour Interval
2. Existing Contour
3. Proposed Contour
4. Spot Elevation
5. Direction of Drainage
6. Existing Trees to be retained



GENERAL NOTES:

1. The Land included in this plan is zoned R30, as per 10-3-77 Comprehensive Zoning Plan.
2. All elevations are based on Howard County Control Station 1040.
3. The area shown in this plan is located at Tax Map No. 35, Part of Parcel 247.
4. The total area included in this plan is 0.605 Acres.
5. All easements are public & existing.
6. Any easements to publicly owned rights of way shall be accepted at the developer's expense.
7. Total Number of Lots: 3



APPROVED FOR PUBLIC WATER AND PUBLIC SEWERAGE SYSTEMS, HOWARD COUNTY HEALTH DEPARTMENT	DATE: 4-15-83
APPROVED FOR PUBLIC WATER AND PUBLIC SEWERAGE, STORM DRAINAGE SYSTEMS AND PUBLIC ROADS, HOWARD COUNTY DEPARTMENT OF PUBLIC WORKS	DATE: 4-13-83
APPROVED FOR PLANNING & ZONING	DATE: 4-18-83
APPROVED FOR PUBLIC WATER AND PUBLIC SEWERAGE, STORM DRAINAGE SYSTEMS AND PUBLIC ROADS, HOWARD COUNTY DEPARTMENT OF PUBLIC WORKS	DATE: 4-13-83
APPROVED FOR PLANNING & ZONING	DATE: 4-18-83

CLARK • FINEROCK & SACKETT ENGINEERS • PLANNERS • SURVEYORS	
DESIGNED	REVISED SITE DEVELOPMENT PLAN LOTS 19, 67 & 79
DRAWN	SEWELLS ORCHARD
CHECKED	6TH SECTION DISTRICT HOWARD COUNTY, MARYLAND
DATE	FOR: DIVERSIFIED HOUSING CORP. SUITE 211 AMERICAN CITY CENTER COLUMBIA, MARYLAND 21044
SCALE	1" = 50'
DRAWING	11-1
JOB NO.	4-125
FILE NO.	6-005-X