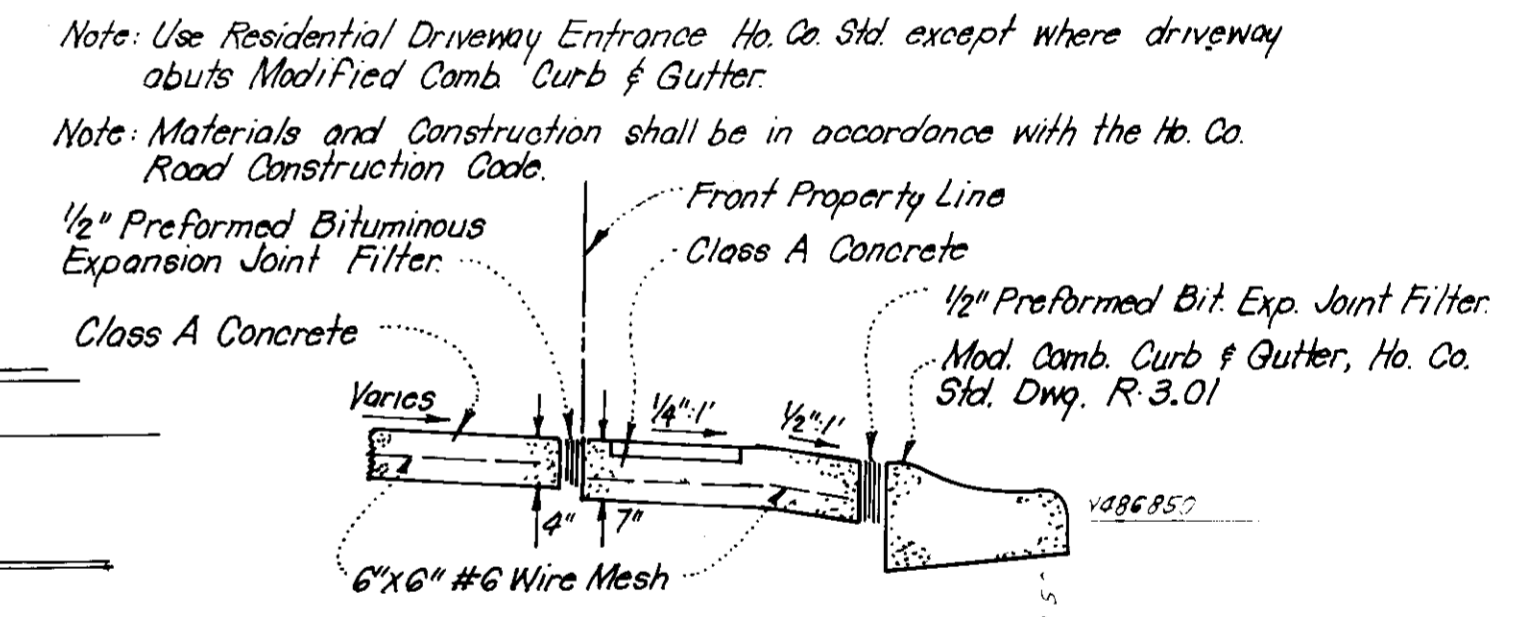
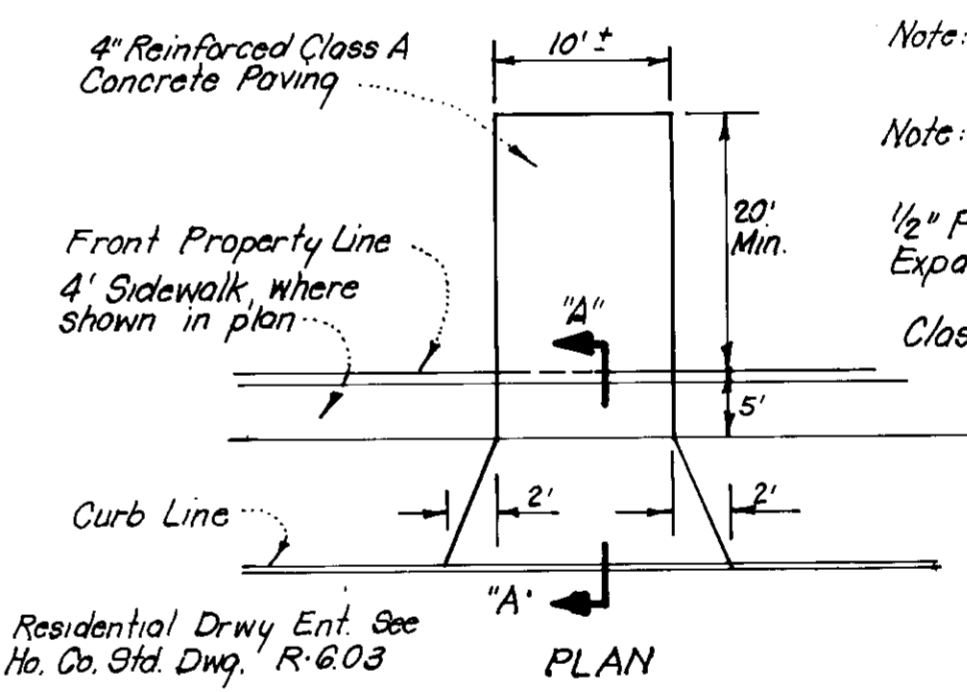
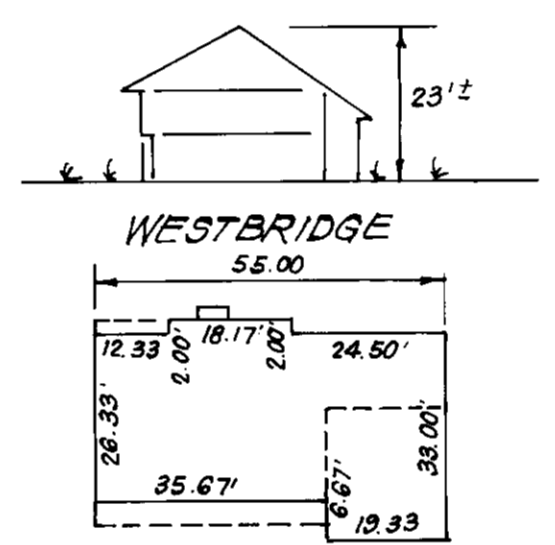


SURVEYOR'S CERTIFICATE

I hereby certify that the information contained herein is the same as shown on previously approved S.D.P. 83-52 C with the following exception:
 1. House Type and Grading has been revised on Lot 112
 I further certify that the Sediment & Erosion control measures, as previously approved, will not be affected, the grading is substantially the same as originally approved, the building setbacks comply with Howard County Zoning and Subdivision Regulations, and the lot has the same geometric configuration as shown on the respective recorded subdivision Plat.

Mar. 1, 1983
 Date

Donald B. Sackett
 DONALD B. SACKETT
 Registered Land Surveyor
 Md. No. 6052



The contractor or developer shall contact the Construction Inspection/Survey Division, 24 hours in advance of commencement of work at 992-2417 or 792-7272

Residential Drwy Ent. See Ho. Co. Std. Dwg. R-603

DRIVEWAY ABUTTING MODIFIED CURB & GUTTER
 NO SCALE

GENERAL NOTES:

- The lands included in this plan is zoned, New Town (S.F.M.D.)
- The Lots shown on this plan are covered by Final Development Plan Phase 178, Part II.
- All coordinates shown herein are based on Howard County Geodetic Control Traverse which is based upon the Maryland State Plane Coordinate System.
- The area covered is located on Tax Map # 42.
- The total area included in this plan is 0.245 Acres.
- All roadways are public & existing.
- Any damage to county owned rights of way or paving shall be corrected at the developer's expense.
- Total Number of Lots: 1

LEGEND:

- Contour Interval
- Driveway
- Driveway to Road
- Spot Elevation
- Direction of Driveway
- Existing Trees to be Retained
- Proposed Plantings

REVISION

NO.	DESCRIPTION	DATE
1	As Shown on Lot 112 from Plat 492B	12-22-82
2	As Shown on Lot 112 from Plat 492B	12-22-82
3	As Shown on Lot 112 from Plat 492B	12-22-82
4	As Shown on Lot 112 from Plat 492B	12-22-82
5	As Shown on Lot 112 from Plat 492B	12-22-82

APPROVED FOR PUBLIC WATER AND PUBLIC SEWERAGE SYSTEMS, HOWARD COUNTY HEALTH DEPARTMENT	<i>[Signature]</i> HEALTH OFFICER	4-12-83 DATE
APPROVED HOWARD COUNTY OFFICE OF PLANNING & ZONING	<i>[Signature]</i> ZONING DIRECTOR	4/14/83 DATE
APPROVED FOR PUBLIC WATER AND PUBLIC SEWERAGE, STORM DRAINAGE SYSTEMS AND PUBLIC ROADS HOWARD COUNTY DEPARTMENT OF PUBLIC WORKS	<i>[Signature]</i> DIRECTOR	4-14-83 DATE
APPROVED FOR PUBLIC WATER AND PUBLIC SEWERAGE, STORM DRAINAGE SYSTEMS AND PUBLIC ROADS HOWARD COUNTY DEPARTMENT OF PUBLIC WORKS	<i>[Signature]</i> DIRECTOR	4-8-83 DATE

PLAT REF. PLATS: 492B

CLARK · FINEFROCK & SACKETT ENGINEERS · PLANNERS · SURVEYORS 11315 LOCKWOOD DRIVE · SILVER SPRING, MARYLAND 20904 · (301) 593-3400	
DESIGNED	REVISED SITE DEVELOPMENT PLAN LOT 112
DRAWN	COLUMBIA
CHECKED	VILLAGE OF KINGS CONTINUANCE SECTION 2 AREA 3 6TH ELECTION DISTRICT HOWARD COUNTY, MARYLAND
DATE	FOR: ULTE HOME CORPORATION 7223 Parkway Drive, Suite 106 Hanover, Md. 21076
SCALE	1" = 30'
DRAWING	NO. 1
JOB NO.	80-138
FILE NO.	80-038-X

3-24-83
 LFD