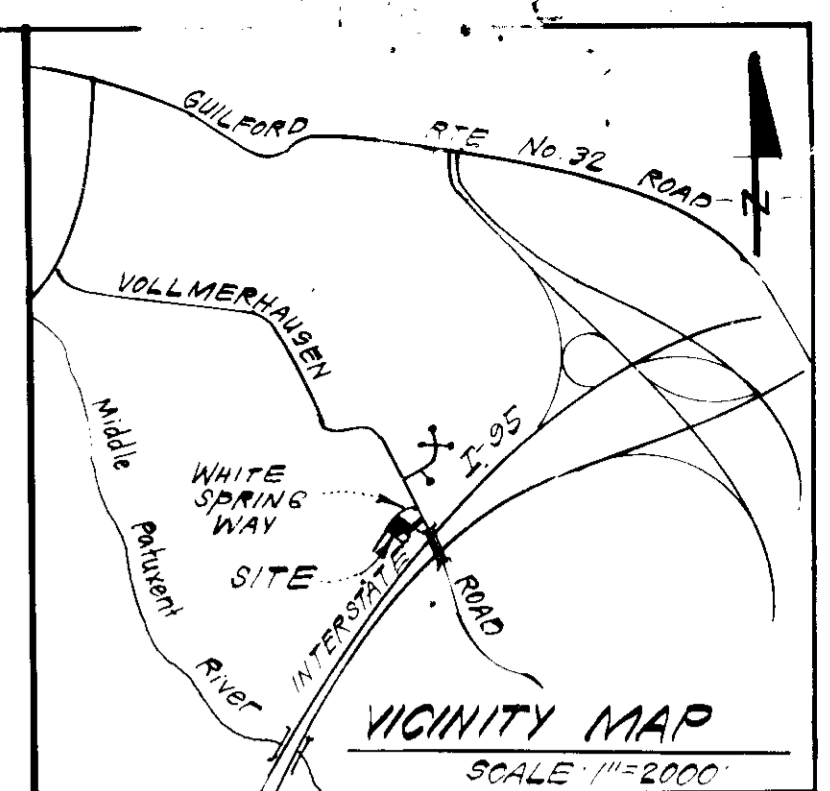
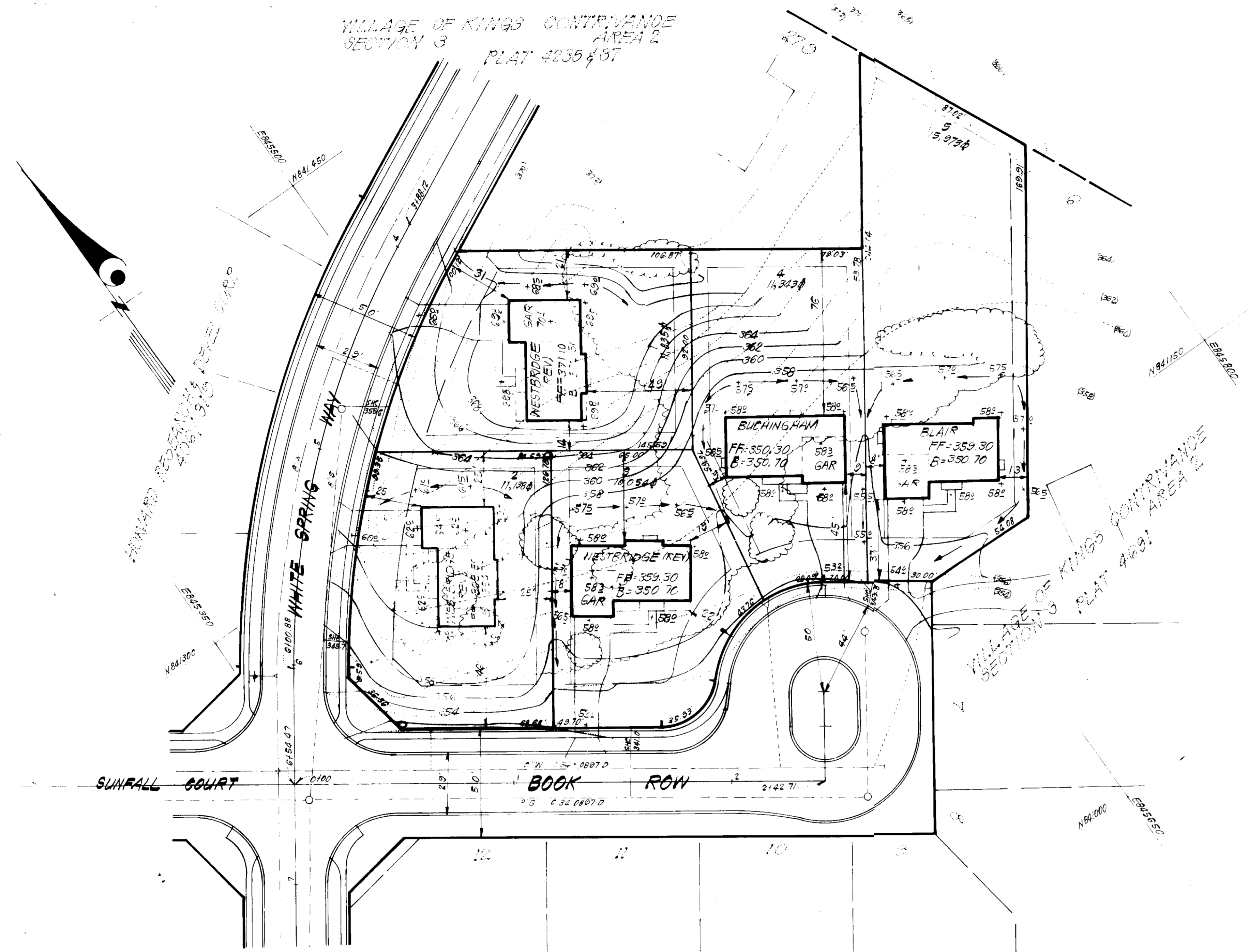


REVISION: on Lot 2 from Final Plat to include bridge DATE: 12-4-82



VILLAGE OF KINGS CONTRIVANCE
SECTION 3
PLAT #235 & 37



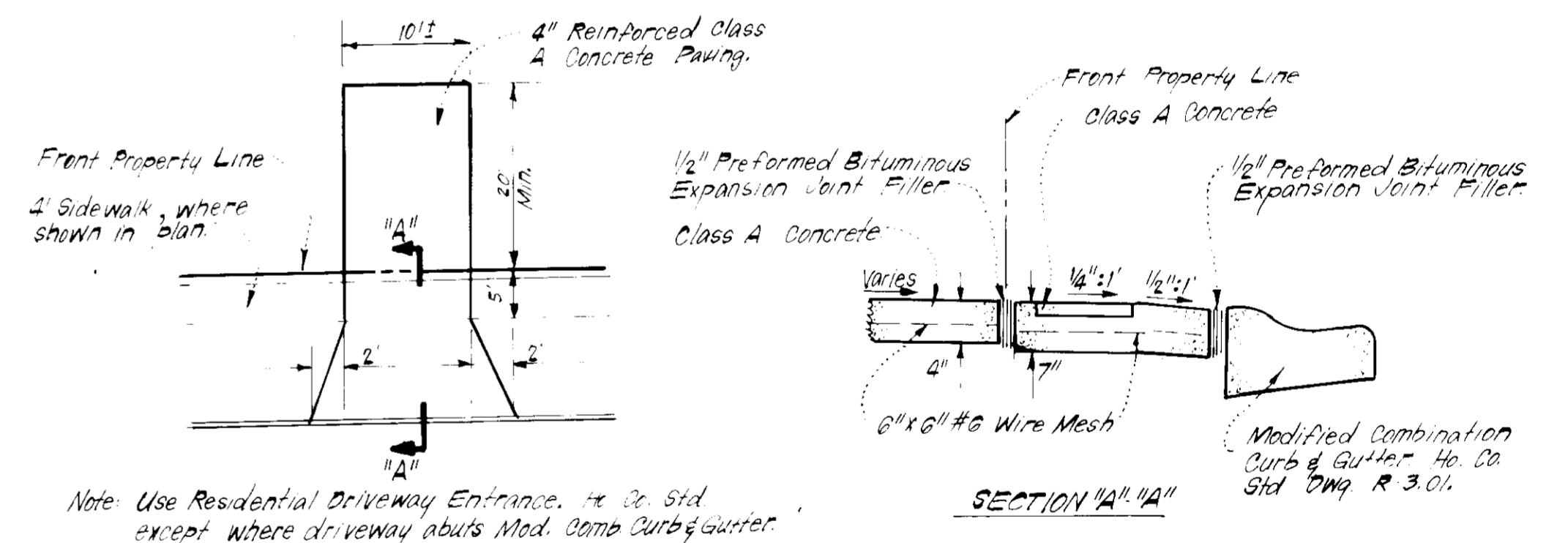
GENERAL NOTES

1. The land included in this plan is zoned: New Town (S.F.L.D.)
2. The lots shown on this plan are covered by Final Development Plan Phase FDP-169, Part 2.
3. All coordinates are based on traverse controls for Columbia established by Maps 1100, in 1962 by Purdum & Vesohite which controls were tied to Maryland Bureau of Control Survey monuments and U.S. Coast & Geodetic Survey monuments in the Columbia area.
4. The area covered in this submission is located on Tax Map #42.
5. The total area included on this plan is 0.256 Acres.
6. All roadways are public and existing.
7. Any damage to county owned rights of way shall be corrected at the developers expense.
8. Total Number of Lots: 1.

LEGEND:

1. Contour Interval 2' (370)
2. Existing Contour 370
3. Proposed Contour 370
4. Spot Elevation 705
5. Direction of Drainage
6. Exist. Trees to be retained

APPROVED
DIVISION OF LAND USE
EXISTING APPROVAL
HOWARD COUNTY
DATE: 3-22-83
P.T.D.



Note: Use Residential Driveway Entrance, 4' x 2' Std. except where driveway abuts Mod. Comb Curb & Gutter.

Note: Materials and Construction shall be in accordance with Ho. Co. Road Constr. Code.

SURVEYOR'S CERTIFICATE

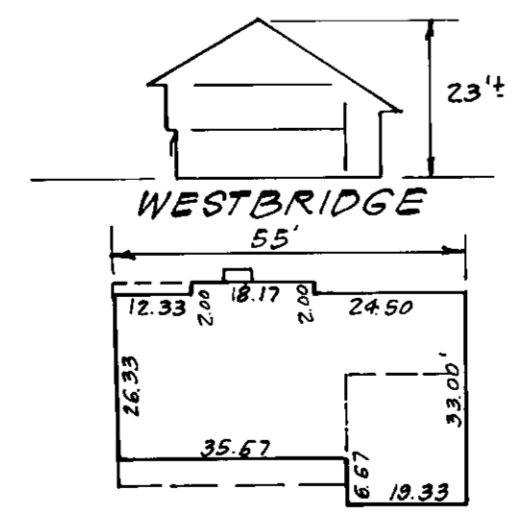
I hereby certify that the information contained herein is the same as shown on previously approved SDP 83-50 C with the following exceptions;

1. House Type and Grading has been revised on Lot 2.

I further certify that the Sediment & Erosion control measures, as previously approved, will not be affected, the grading is substantially the same as originally approved, the building setbacks comply with Howard County Zoning and Subdivision Regulations, and the lot has the same geometric configuration as shown on the respective recorded subdivision Plats.

Feb. 27, 83
Date

Donald B. Sackett
Registered Land Surveyor
Md. No. 6059



TYPICAL HOUSES
No SCALE

APPROVED FOR PUBLIC WATER AND PUBLIC SEWERAGE SYSTEMS HOWARD COUNTY HEALTH DEPARTMENT	OFFICER: <i>[Signature]</i> DATE: 4-12-83
APPROVED FOR PLANNING & ZONING HOWARD COUNTY OFFICE OF PLANNING & ZONING	OFFICER: <i>[Signature]</i> DATE: 4/14/83
APPROVED FOR LAND DEVELOPMENT & ZONING ADMIN.	OFFICER: <i>[Signature]</i> DATE: 4-14-83
APPROVED FOR PUBLIC WATER AND PUBLIC SEWERAGE STORM DRAINAGE SYSTEMS AND PUBLIC ROADS HOWARD COUNTY DEPARTMENT OF PUBLIC WORKS	OFFICER: <i>[Signature]</i> DATE: 4-2-83
APPROVED FOR ENGINEERING	OFFICER: <i>[Signature]</i> DATE:

PLAT REF: PLAT 4691

CLARK • FINEFROCK & SACKETT ENGINEERS • PLANNERS • SURVEYORS	
11315 LOCKWOOD DRIVE • SILVER SPRING, MARYLAND 20904 • (301) 593-3400	
DESIGNED J.M.E.	REVISED SITE DEVELOPMENT PLAN LOT 2
DRAWN V.L.B. K.W.	COLUMBIA VILLAGE OF KINGS CONTRIVANCE SECTION 3 AREA 2
CHECKED J.M.E.	8TH ELECTION DISTRICT HOWARD COUNTY, MARYLAND
DATE 2-22-83	FOR: MILTE HOME CORP. 7223 Parkway Drive, Suite 106 Hanover, Md. 21076
SCALE 1"=30'	DRAWING 10-1
JOB NO 80104	FILE NO 80104 X

The contractor or developer shall contract the Construction Inspection (Survey Division), 24 hours in advance of commencement of work at 992-2417 or 792-7272

SDP-83-117c