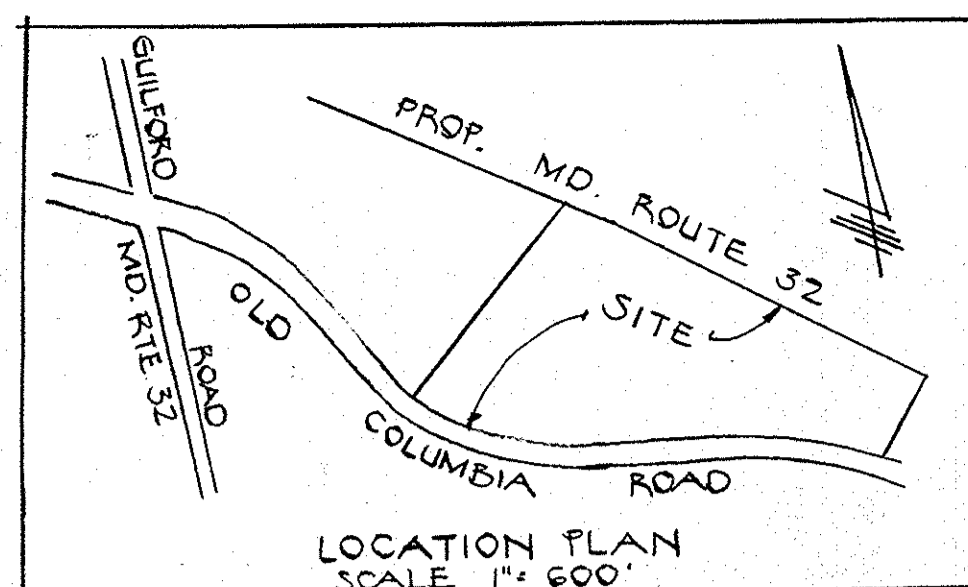


DEVELOPER & OWNER
 M.O.F. XVIII ASSOCIATES
 SUITE 2100 CHARLES CENTER SOUTH
 36 S. CHARLES ST.
 BALTO., MD 21201

STATE HIGHWAY ADMINISTRATION
 528-577
 SHA PLAT NOS 377,378
 VEHICULAR INGRESS & EGRESS IS RESTRICTED



These plans for soil erosion and sediment control meet the requirements for soil erosion and sediment control.

Howard SCD
 SDP-83-110C
 DATE 3-29-83

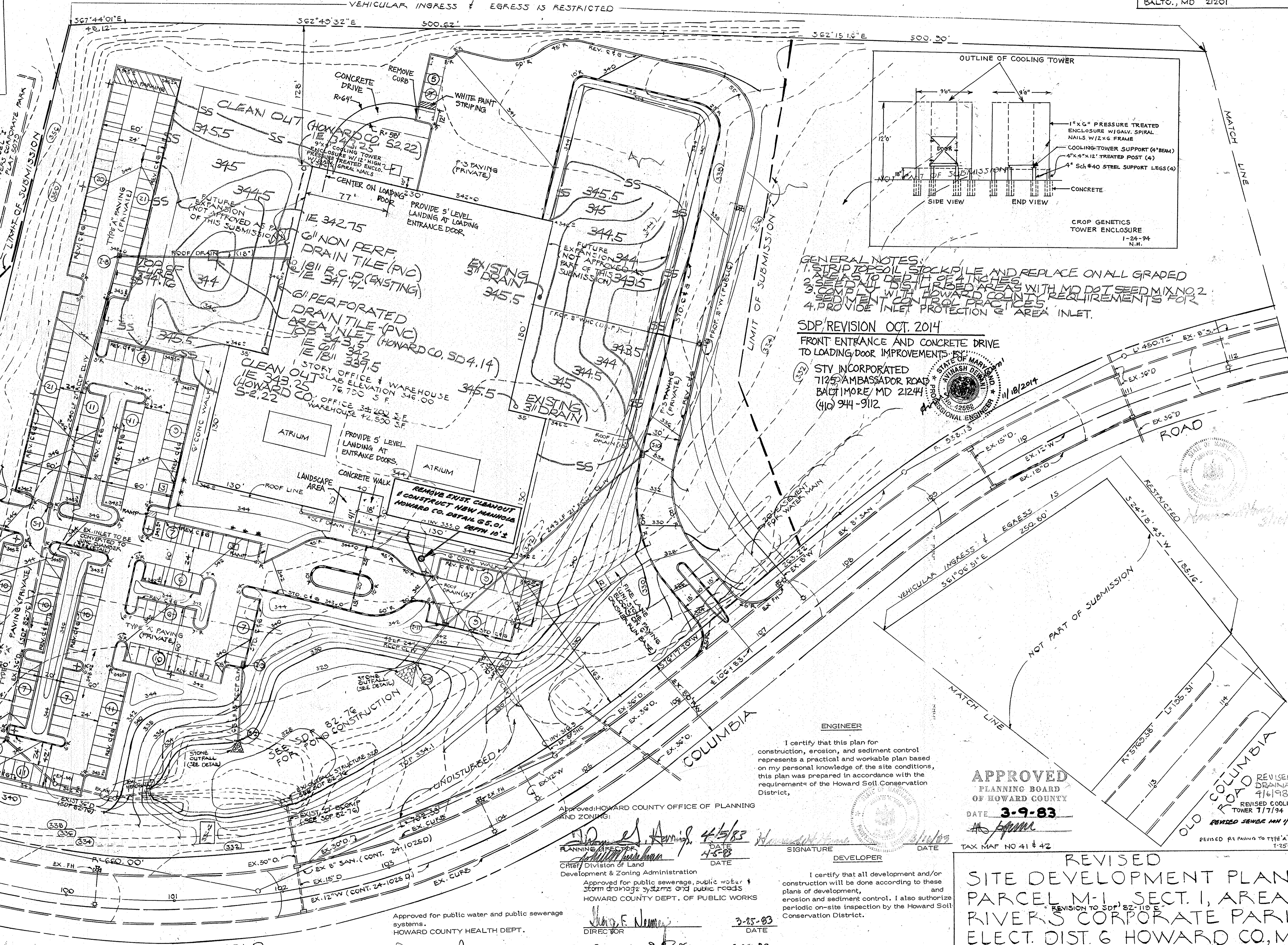
These plans have been reviewed for the Howard Soil Conservation District and meet the technical requirements for soil erosion and sediment control.

James M. Helm, Jr.
 U.S. Soil Conservation Service
 DATE 3-29-83

- NOTES**
- ZONING - NEW TOWN INDUSTRIAL FDP 187-A
 - AREA - 16.3617 AC
 - AREA OF LIMIT OF SUBMISSION - 12.2 AC
 - TOTAL BLDG AREA - 76,700 SF (COV. 11%)
 - PARKING DATA
 - OFFICE AREA - 31,600 SF
 - PARKING REQ - 31,200/500 - 60 SP
 - WAREHOUSE AREA - 42,500 SF (175 EMP)
 - PARKING REQ - 175/2 - 88 SP
 - TOTAL REQ - 152 SP
 - TOTAL PROVIDED - 242 SP
 - (INCL. G.H.C SPACES)
 - GREEN SPACE - 17%
 - THIS SITE IS NOT AFFECTED BY A 100YR. FLOOD PLAIN
 - MATERIALS & CONSTRUCTION SHALL BE IN ACCORDANCE WITH THE HOWARD SOIL CONSERVATION CODE & STD. SPECS.
 - CONTRACTOR SHALL CONTACT THE CONSTRUCTION INSPECTION/SURVEY DIV. 24 HRS IN ADVANCE OF STARTING WORK @ 9:00-2:47 OR 7:02-7:17
 - + DENOTES STREET LIGHTS
 - PARKING DATA
 - OFFICE - 31,671 SF @ 3.5/1000 = 115 SP
 - WAREHOUSE - 36,061 SF @ 75/1000 = 28 SP
 - MANUFACTURING - 4,057 SF @ 2/1000 = 9 SP
 - TOTAL PKG REQ'D - 152 SP
 - TOTAL PKG PROVIDED - 242 SP

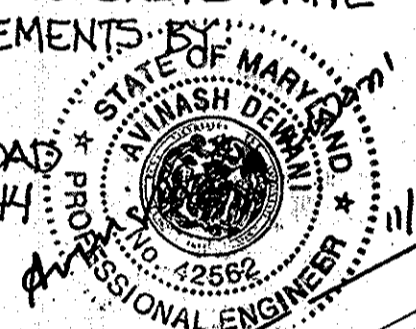
PREPARED BY
 M&H DEVELOPMENT ENGINEERS, INC.
 101 SHELL BLDG.
 200 E. JOFFA RD.
 TOWSON MD. 21286
 (410) 828-9060

Lawrence E. Jones 10/6/194



- GENERAL NOTES:**
- STRIP TOPSOIL STOCKPILE AND REPLACE ON ALL GRADED
 - SEEDS TO DEPTH OF 4 INCHES
 - COMB ALL DISTURBED AREAS WITH MD DOT SEED MIX NO. 2
 - SEDIMENT CONTROL PRACTICES
 - PROVIDE INLET PROTECTION & AREA INLET.

SDP REVISION OCT. 2014
 FRONT ENTRANCE AND CONCRETE DRIVE TO LOADING DOOR IMPROVEMENTS BY STV INCORPORATED
 7125 AMBASSADOR ROAD
 BALTIMORE MD 21244
 (410) 944-9112



ENGINEER
 I certify that this plan for construction, erosion, and sediment control represents a practical and workable plan based on my personal knowledge of the site conditions, this plan was prepared in accordance with the requirements of the Howard Soil Conservation District.

APPROVED
 PLANNING BOARD
 OF HOWARD COUNTY
 DATE 3-9-83

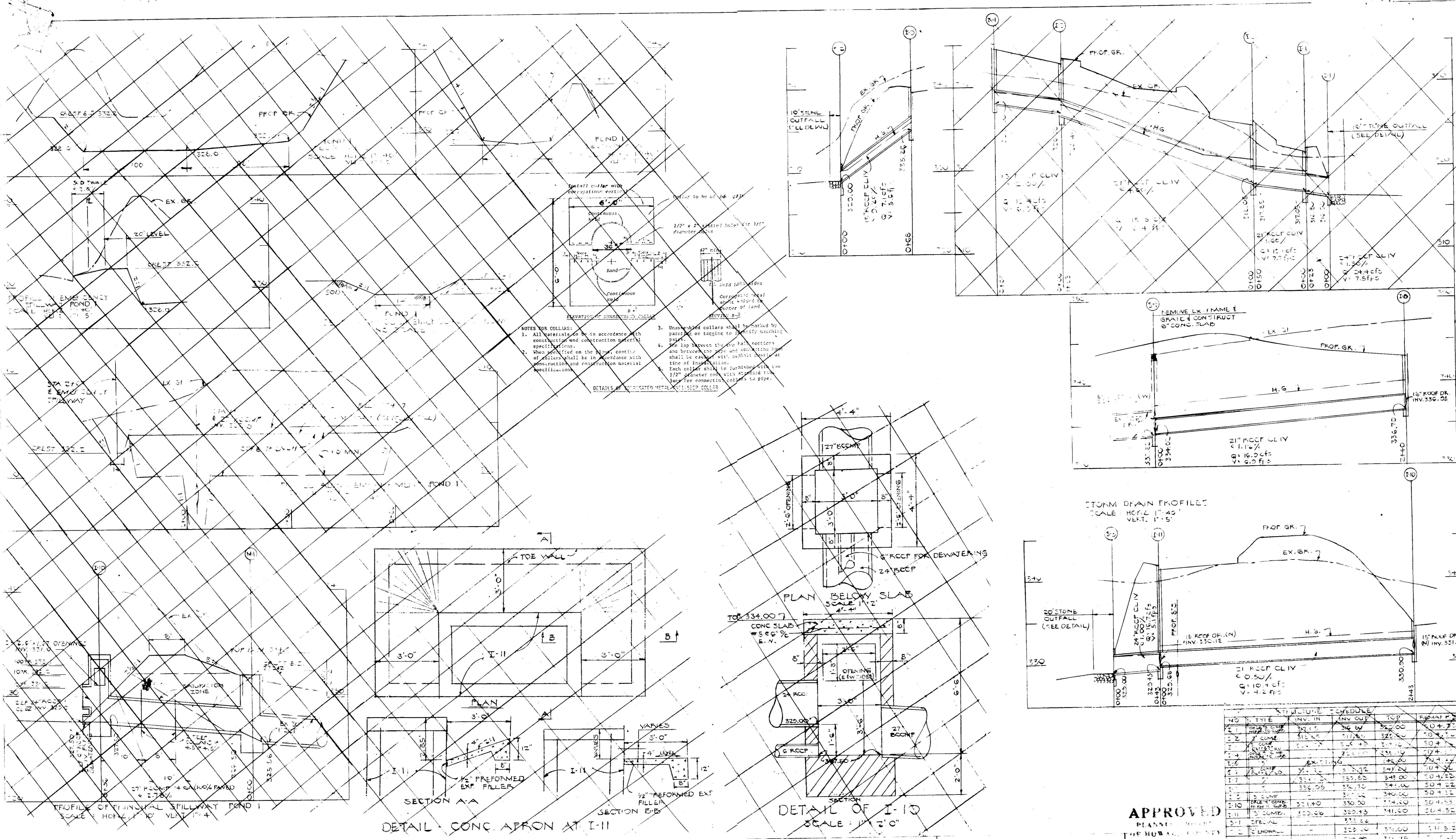
Approved: HOWARD COUNTY OFFICE OF PLANNING AND ZONING:
 DATE 4-5-83
 CRISTY DIVISION OF LAND DEVELOPMENT & ZONING ADMINISTRATION
 Approved for public sewerage, public water & storm drainage systems and public roads
 HOWARD COUNTY DEPT. OF PUBLIC WORKS

Approved for public water and public sewerage systems.
 HOWARD COUNTY HEALTH DEPT.

DATE 3-25-83
 DATE 3-26-83
 DATE 3-28-83

SIGNATURE DEVELOPER
 I certify that all development and/or construction will be done according to these plans of development, and erosion and sediment control. I also authorize periodic on-site inspection by the Howard Soil Conservation District.

REVISOR
 DATE 11/15/93
 REVISOR
 DATE 1-25-1989
 REVISOR
 DATE 4/6/98
 REVISOR
 DATE 11/7/94
 REVISOR
 DATE 11/15/93
 REVISOR
 DATE 1-25-1989



- NOTES FOR COLLARS:**
1. All materials to be in accordance with construction and construction material specifications.
 2. When specified on the plans, center of collar shall be in accordance with construction and construction material specification.
 3. Unassembled collars shall be marked by paint or tagging to identify matching parts.
 4. The lap between the two parts, sections and between the pipe and connecting band shall be caulked with asphalt mastic at time of installation.
 5. Each collar shall be furnished with two 1/2" diameter rods with standard thread for connecting collars to pipe.

NO.	TYPE	INVT. TH.	INV. OUT.	TCV	REMARKS
1	27" RCP	329.00	329.00	0.00	SD 4.32
2	24" RCP	329.00	329.00	0.00	SD 4.32
3	24" RCP	329.00	329.00	0.00	SD 4.32
4	24" RCP	329.00	329.00	0.00	SD 4.32
5	24" RCP	329.00	329.00	0.00	SD 4.32
6	24" RCP	329.00	329.00	0.00	SD 4.32
7	24" RCP	329.00	329.00	0.00	SD 4.32
8	24" RCP	329.00	329.00	0.00	SD 4.32
9	24" RCP	329.00	329.00	0.00	SD 4.32
10	24" RCP	329.00	329.00	0.00	SD 4.32
11	24" RCP	329.00	329.00	0.00	SD 4.32
12	24" RCP	329.00	329.00	0.00	SD 4.32
13	24" RCP	329.00	329.00	0.00	SD 4.32
14	24" RCP	329.00	329.00	0.00	SD 4.32
15	24" RCP	329.00	329.00	0.00	SD 4.32
16	24" RCP	329.00	329.00	0.00	SD 4.32
17	24" RCP	329.00	329.00	0.00	SD 4.32
18	24" RCP	329.00	329.00	0.00	SD 4.32
19	24" RCP	329.00	329.00	0.00	SD 4.32
20	24" RCP	329.00	329.00	0.00	SD 4.32

DEVELOPER/TOWNER
 M. O. R. XVIII ASSOCIATES
 SUITE 2100 CHARLES CENTER SOUTH
 205 CHARLES ST
 BALTO MD 21201
 ENGINEER
 HUDKINS ASSOCIATES INC
 101 SHELL BLDG
 100 E JOPPA RD
 TOWSON MD. 21204

Approved: HOWARD COUNTY OFFICE OF PLANNING AND ZONING.
 [Signature]
 PLANNING DIRECTOR
 4/5/83
 DATE
 4583

Approved for public water and public sewerage systems.
 HOWARD COUNTY HEALTH DEPT.
 [Signature]
 County Health Dept. Officer
 3-28-83
 DATE

Approved for public sewerage, public water and storm drainage systems & public roads.
 HOWARD COUNTY DEPT. OF PUBLIC WORKS
 [Signature]
 DIRECTOR
 3-25-83
 DATE

Approved for public sewerage, public water and storm drainage systems & public roads.
 HOWARD COUNTY DEPT. OF PUBLIC WORKS
 [Signature]
 Chief Bureau of Engineering
 3-24-83
 DATE

These plans have been reviewed for the Howard Soil Conservation District and meet the technical requirements for erosion and sediment control.
 [Signature]
 U.S. Soil Conservation Service
 3-22-83
 DATE

These plans for erosion and sediment control meet the requirements for soil erosion and sediment control.
 [Signature]
 Howard SCD
 3-22-83
 DATE

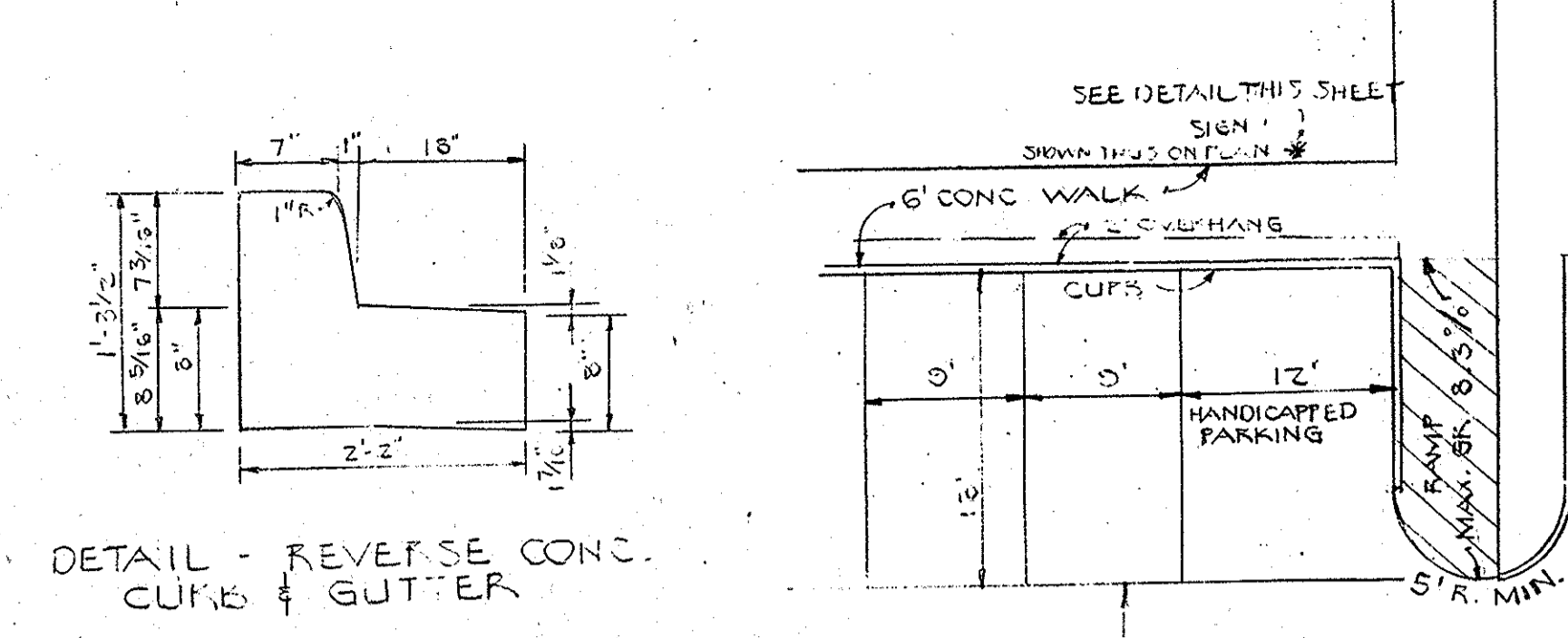
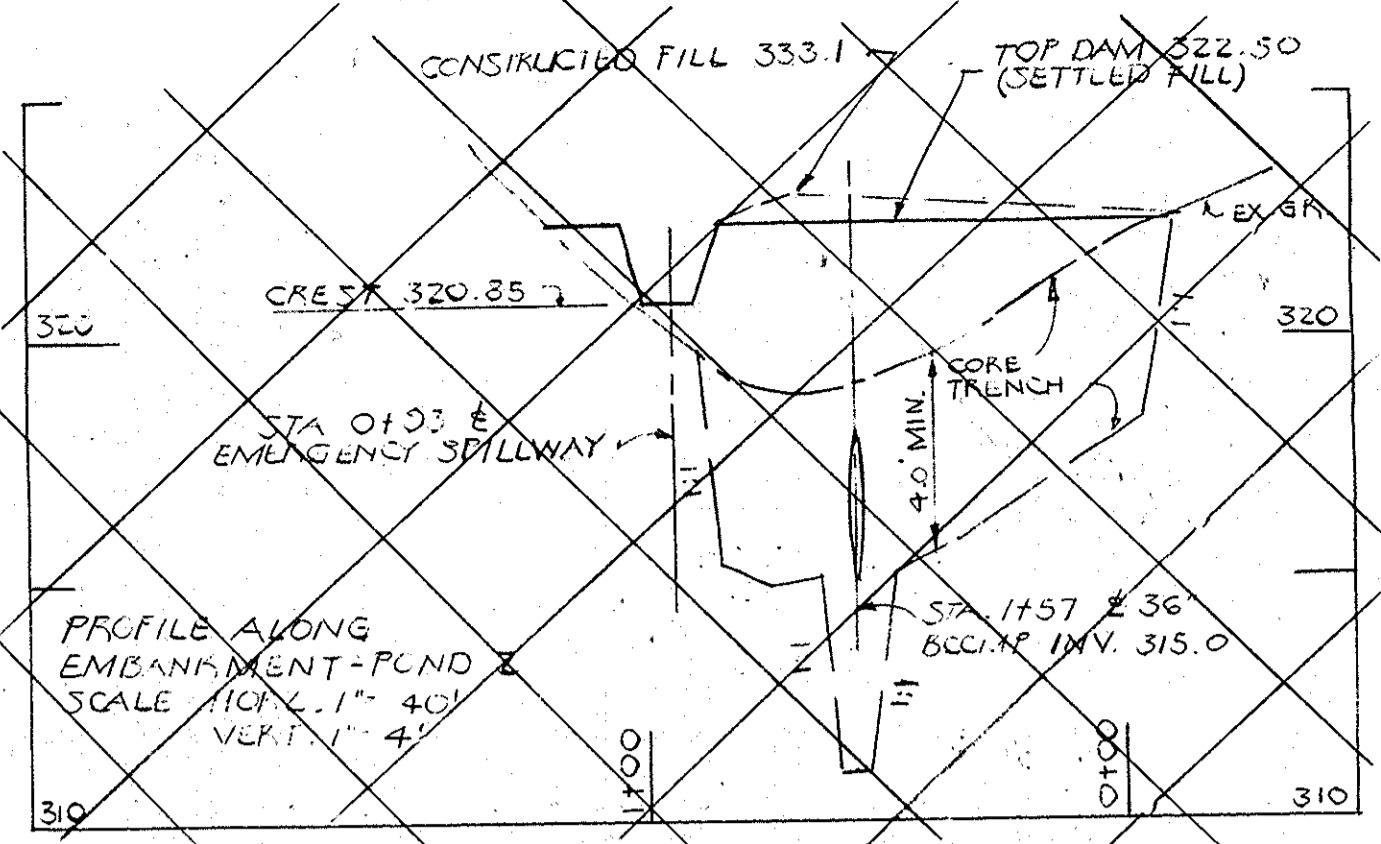
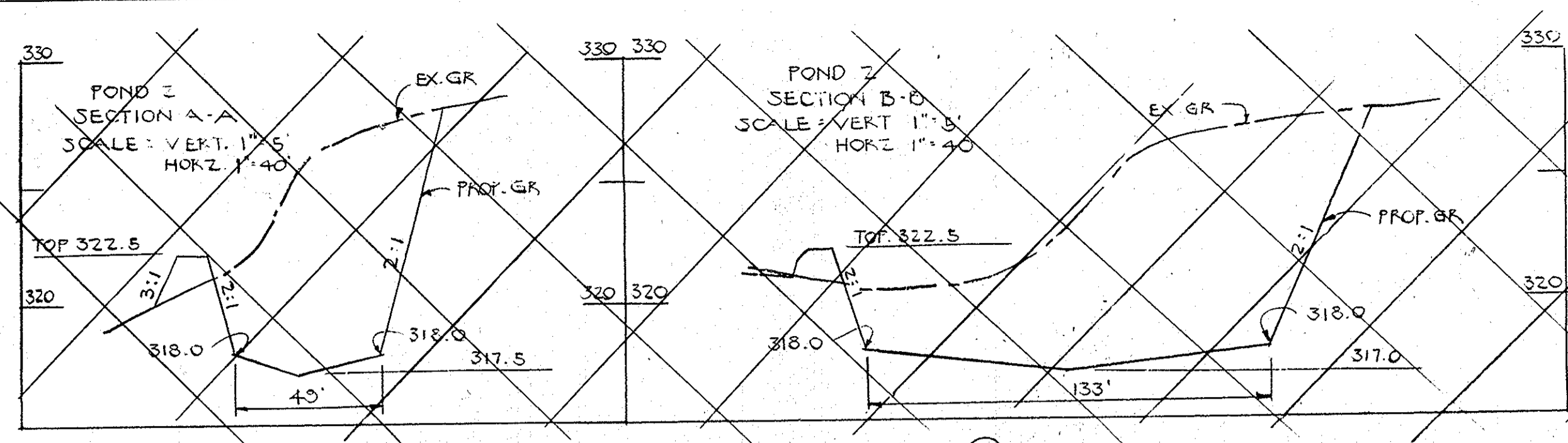
ENGINEER
 I certify that this plan for erosion, and sediment control represents a practical and workable plan based on my personal knowledge of the site conditions, this plan was prepared in accordance with the requirements of the Howard Soil Conservation District,
 [Signature] DATE

DEVELOPER
 I certify that all development and/or construction will be done according to these plans of development, and erosion and sediment control. I also authorize periodic on-site inspection by the Howard Soil Conservation District.
 [Signature] DATE

APPROVED
 PLANNING DEPARTMENT
 OF HOWARD COUNTY
 3-9-83
 [Signature]

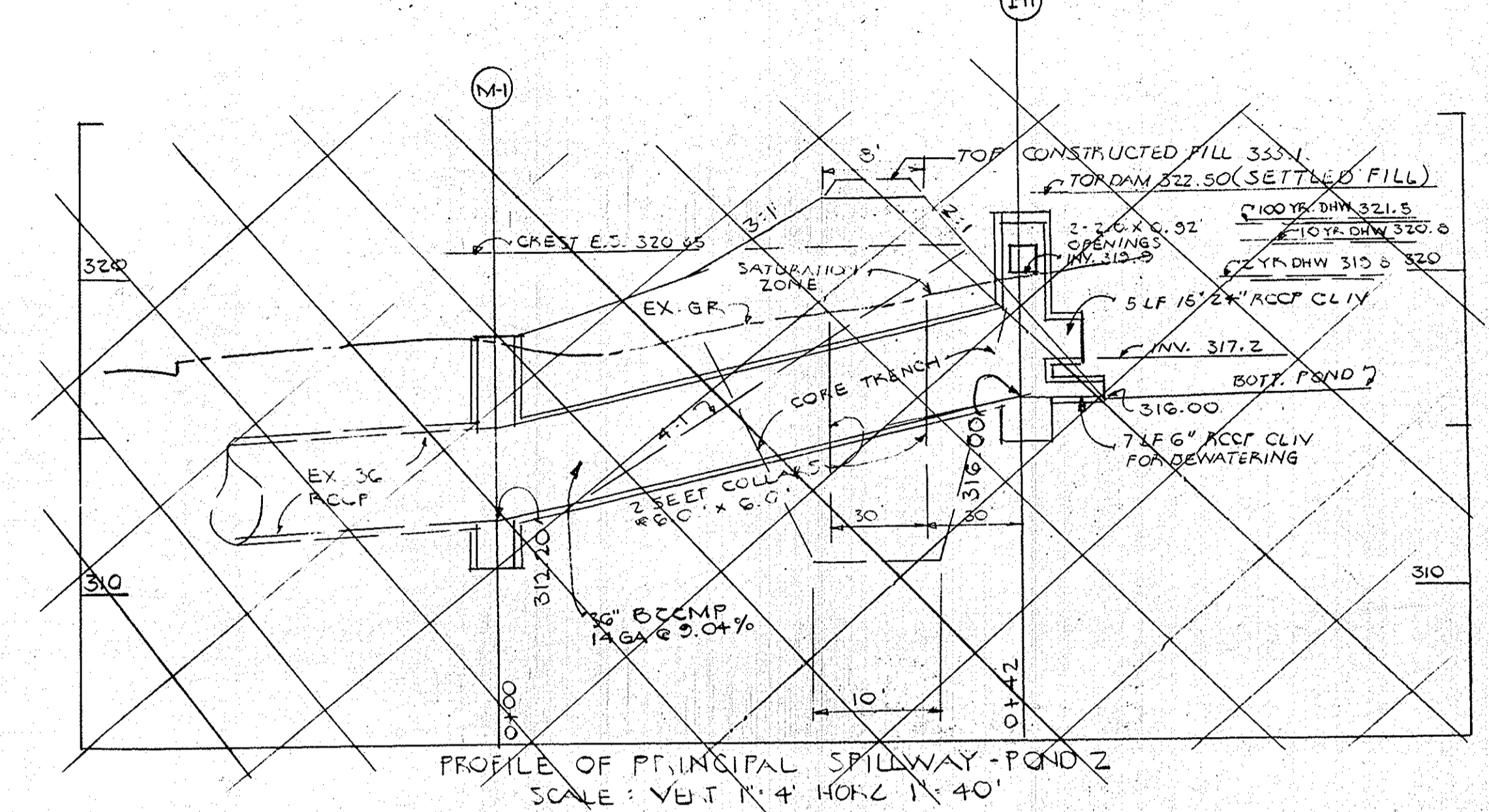
REVISION

SITE DEVELOPMENT PLAN
 PARCEL M1, SECT. 1, AREA 1
 RIVER CORPORATE PARK
 ELECT. DIST. 6 HOWARD CO, MD.
 SCALE 1"=40' FEB 11, 1983 COF7
 SDP-83-110-155

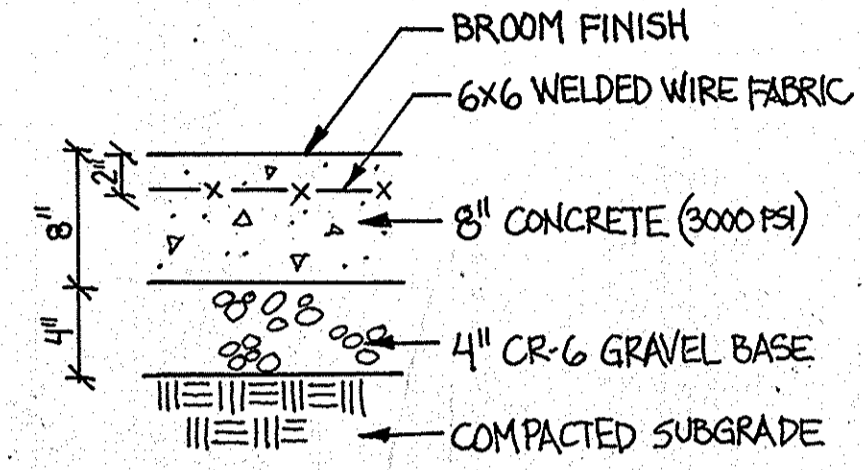


STANDARD DETAILS
 CONC. C & G - DET. R.3-01
 PAVING - DET. R.2-01
 SIDEWALK - DET. R.3-05

TYPICAL PARKING LAYOUT
 SCALE: 1"=10'

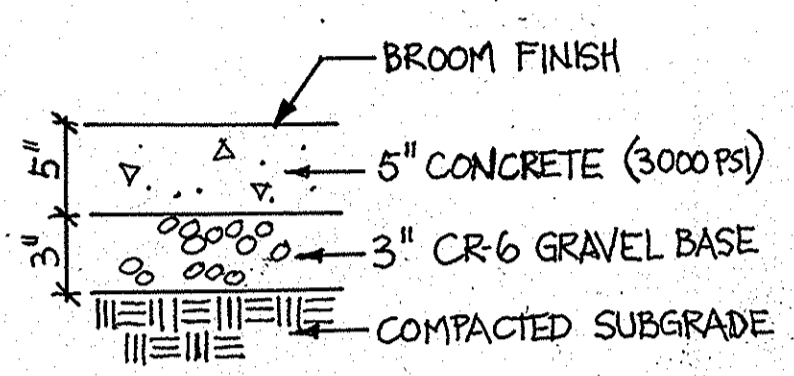


HANDICAPPED PARKING SIGN DETAIL SHOWN THUS ON PLAN *



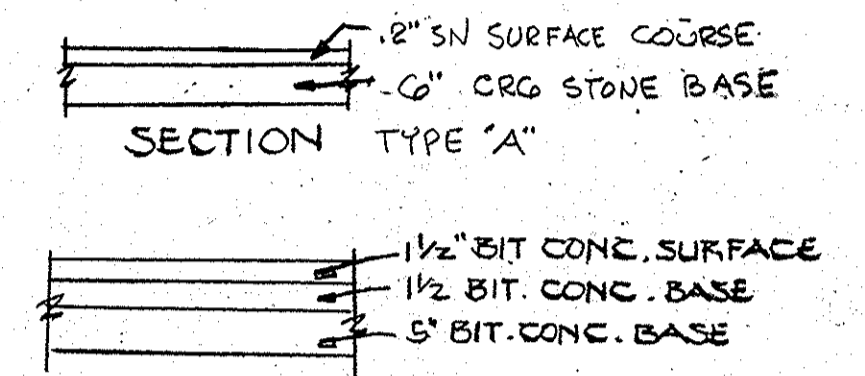
1/2" PRE MOLDED EXPANSION JOINT MATERIAL TO BE PLACED WHERE DRIVE ABUTS EXISTING PAVING AND AT MAXIMUM 20' INTERVALS.

HEAVY DUTY CONCRETE DRIVE N.T.S.



1/2" PRE MOLDED EXPANSION JOINT MATERIAL TO BE PLACED WHERE SIDEWALK ABUTS CURBS, WALLS, ETC AND AT MAXIMUM 20' INTERVALS.

CONCRETE SIDEWALK N.T.S.



SECTION P-3 PAVING SECTIONS

SDP REVISION OCT. 2014
 FRONT ENTRANCE AND CONCRETE DRIVE TO LOADING DOOR IMPROVEMENTS BY:
 STV INCORPORATED
 7125 AMBASSADOR ROAD
 BALTIMORE MD 21244
 (410) 944-9112

APPROVED
 PLANNING BOARD
 OF HOWARD COUNTY
 DATE 3-9-83

These plans have been reviewed for the Howard Soil Conservation District and meet the technical requirements for erosion and sediment control.
 JAMES M. HELM
 U.S. SOIL CONSERVATION SERV. 3-22-83 DATE

These plans for erosion and sediment control meet the requirements for soil erosion and sediment control.
 W. J. RAY
 HOWARD SCD 3-22-83 DATE
 SDP-83-110C PLAN NO.



APPROVED: HOWARD COUNTY OFFICE OF PLANNING AND ZONING.
 DORIS G. HARRIS 4/5/83 DATE
 PLANNING DIRECTOR
 JOHN M. MURPHY 4-5-83 DATE
 CHIEF, DIVISION OF LAND DEVELOPMENT & ZONING ADMIN.

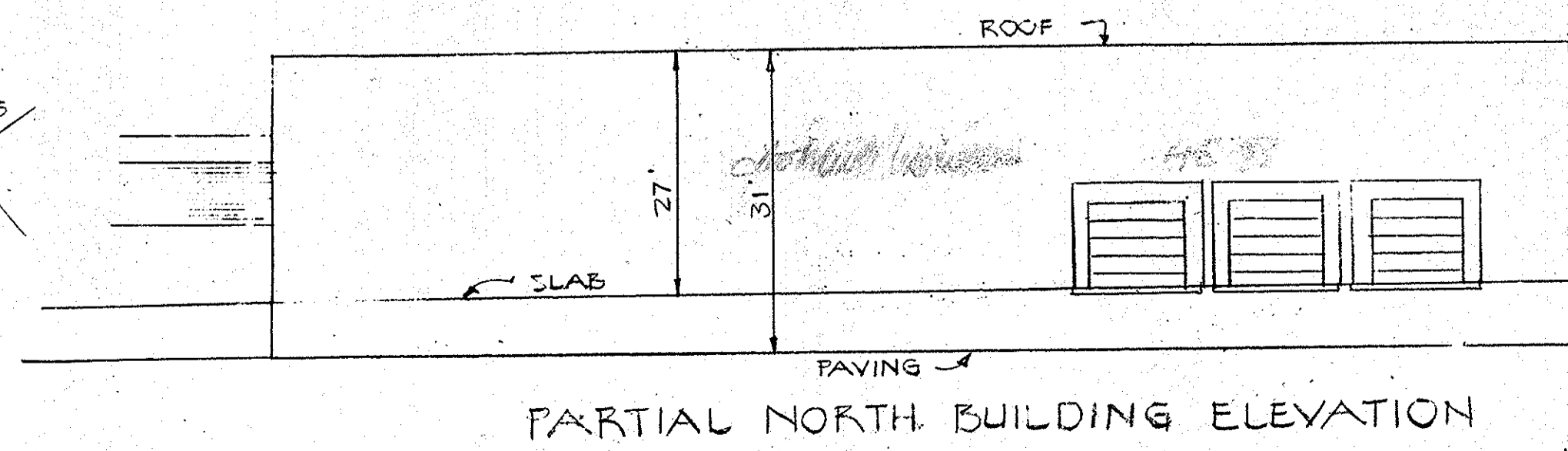
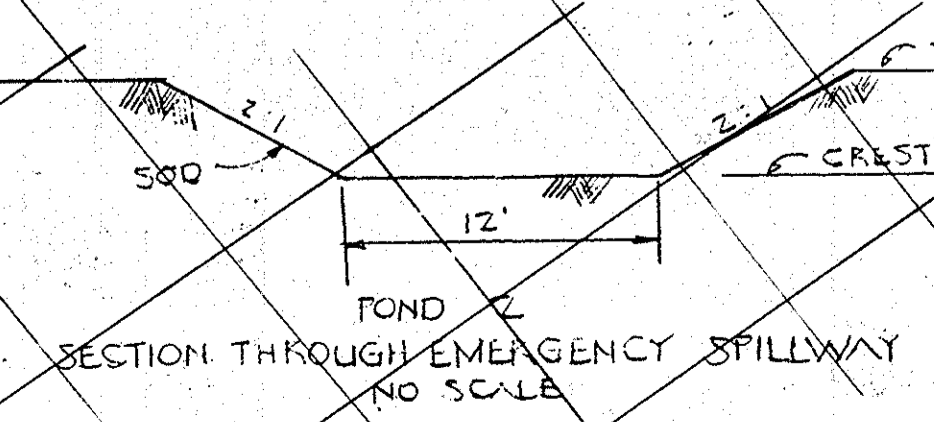
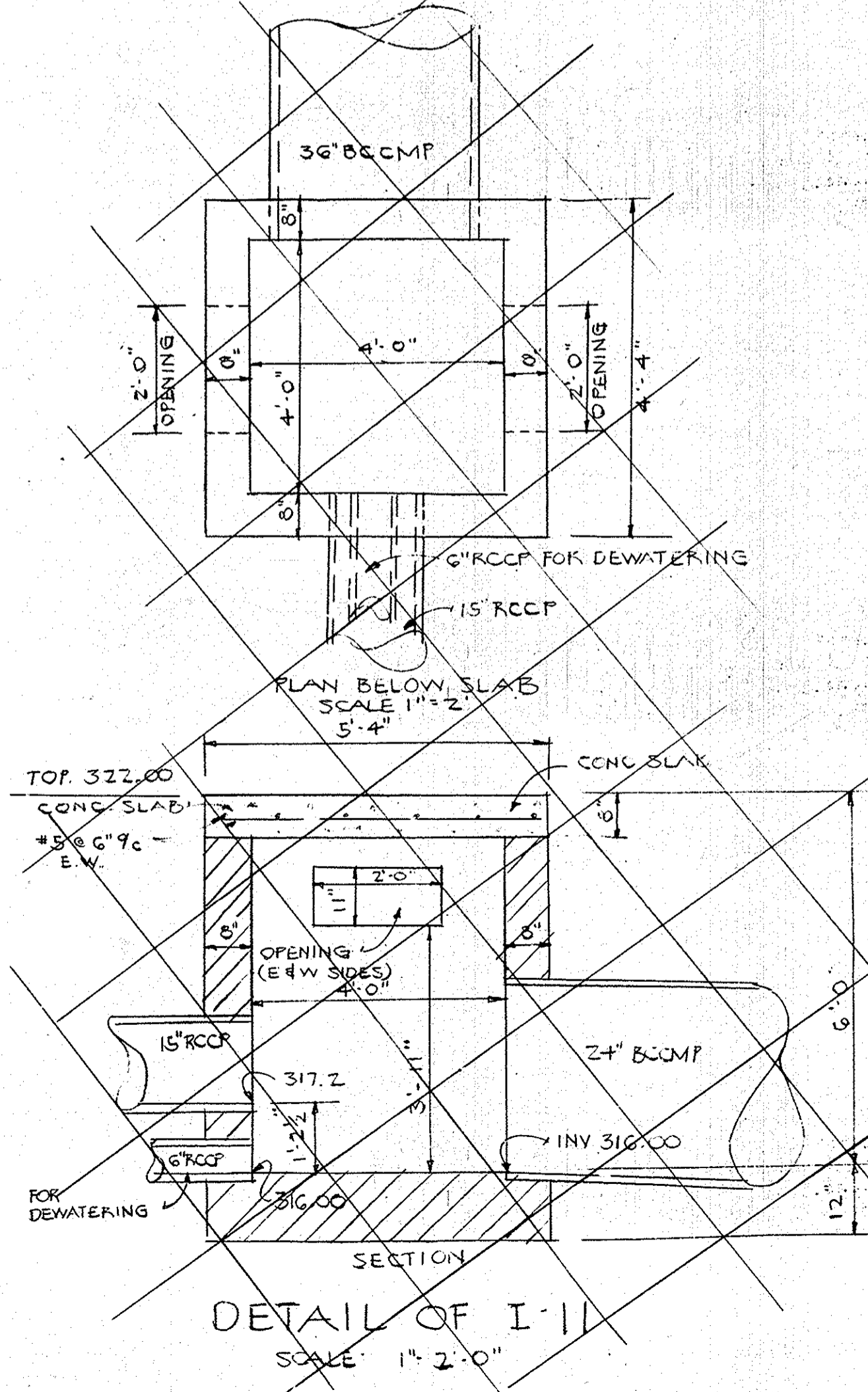
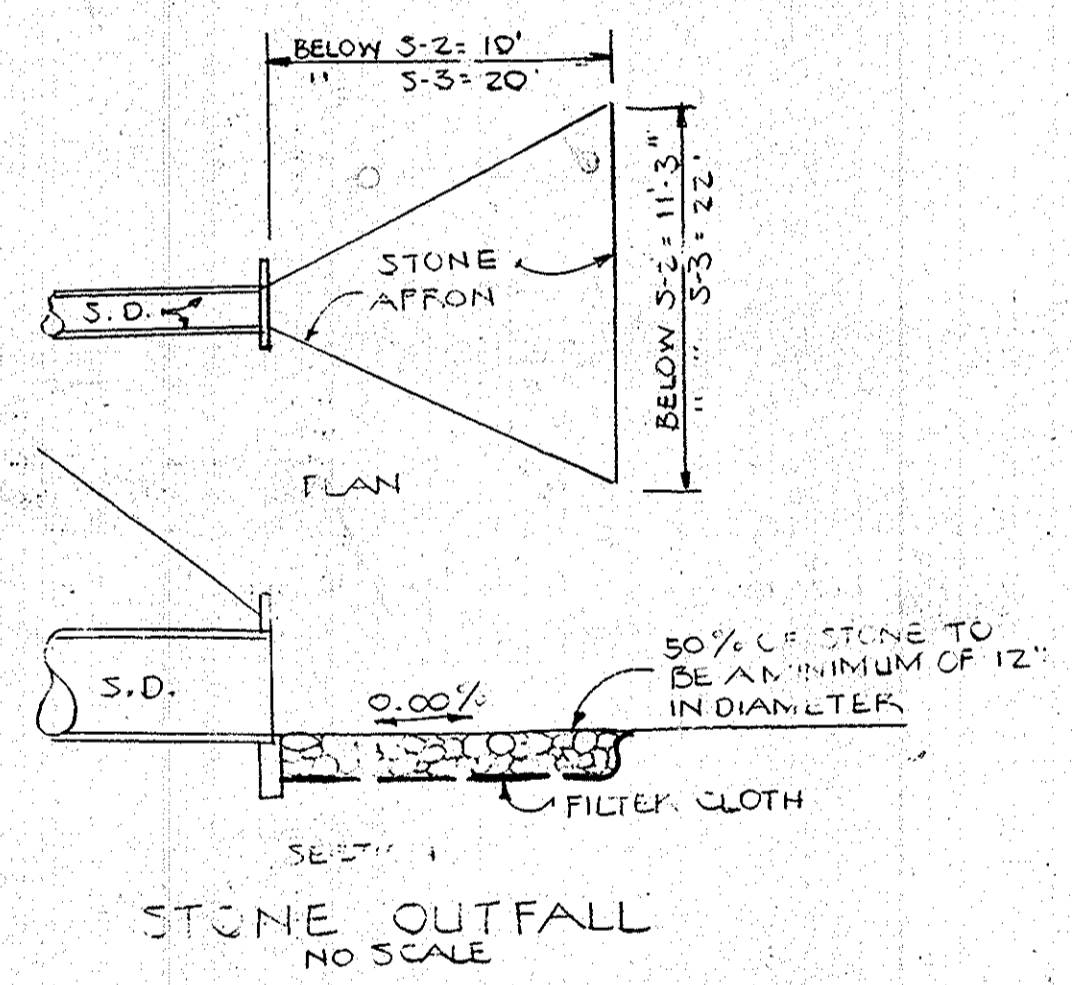
DEVELOPER & OWNER
 M.O.R XVIII ASSOCIATES
 SUITE 2100 CHARLES CENTER SOUTH
 36 S. CHARLES ST
 BALTO, MD 21201
 ENGINEER
 HUDKINS ASSOCIATES INC.
 101 SHELL BLDG.
 200 E. JOPPA RD
 TOWSON MD, 21204

Approved for public water and public sewerage systems.
 HOWARD COUNTY HEALTH DEPT.
 JOHN BYLER 3-28-83 DATE
 County Health Dept. Officer

Approved for public sewerage, public water and storm drainage systems & public roads.
 HOWARD COUNTY DEPT. OF PUBLIC WORKS
 WALTER F. NEWMAN 3-25-83 DATE
 Chief Bureau of Engineering

I certify that this plan for erosion, and sediment control represents a practical and workable plan based on my personal knowledge of the site conditions, this plan was prepared in accordance with the requirements of the Howard Soil Conservation District.

I certify that all development and/or construction will be done according to these plans of development, and erosion and sediment control. I also authorize periodic on-site inspection by the Howard Soil Conservation District.



REVISOR
 SITE DEVELOPMENT PLAN
 PARCEL M-1, SECT. 1, AREA 1
 RIVERS CORPORATE PARK
 ELECT. DIST. 6 HOWARD CO., MD
 SCALE: 1"=40' FEB. 11, 1983 3 OF 7
 SDP-83-110. G185

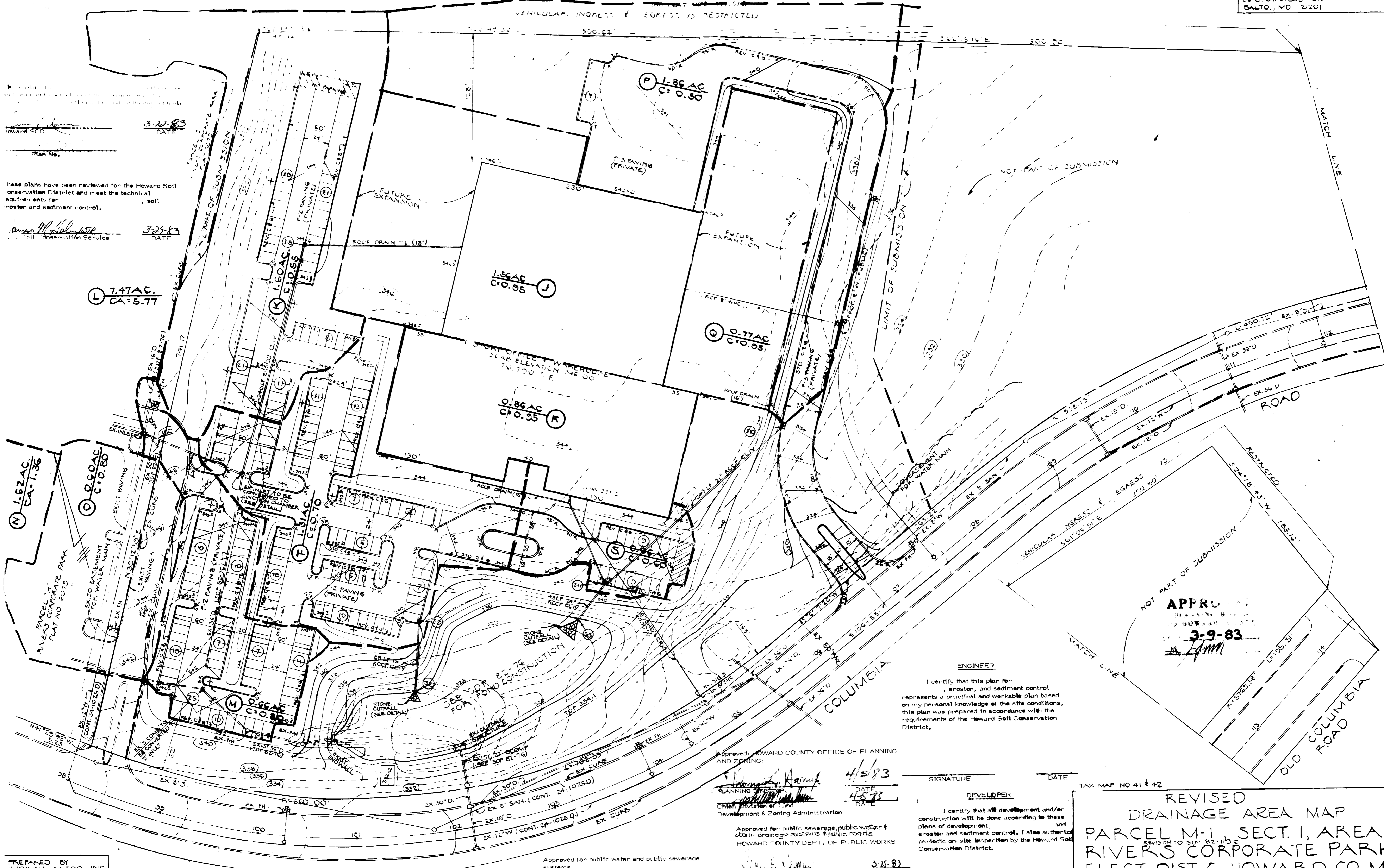
DESIGNED BY:
M.O.R. XVIII ASSOCIATES
SUITE 2100 CHARLES CENTER SOUTH
36 S. CHARLES ST.
BALTO., MD 21201

STATE HIGHWAY ADMINISTRATION
VEHICULAR INGRESS & EGRESS IS RESTRICTED

These plans have been reviewed for the Howard Soil Conservation District and meet the technical requirements for erosion and sediment control.

3-22-83 DATE
3-23-83 DATE

PREPARED BY:
HUDKINS ASSOC., INC.
101 SHELL BLDG.
200 E. JOFFA RD
TOWSON MD. 21204



ENGINEER
I certify that this plan for erosion and sediment control represents a practical and workable plan based on my personal knowledge of the site conditions, this plan was prepared in accordance with the requirements of the Howard Soil Conservation District.

Approved: HOWARD COUNTY OFFICE OF PLANNING AND ZONING
4/5/83 DATE
4/5/83 DATE

Approved for public water and public sewerage systems.
HOWARD COUNTY HEALTH DEPT.
3-25-83 DATE
3-24-83 DATE

DEVELOPER
I certify that all development and/or construction will be done according to these plans of development, and erosion and sediment control. I also authorize periodic on-site inspection by the Howard Soil Conservation District.

REVISED DRAINAGE AREA MAP
PARCEL M-1, SECT. 1, AREA 1
RIVERS CORPORATE PARK
ELECT. DIST. 6 HOWARD CO., MD.
SCALE: 1" = 40' FEB. 11, 1983 4 OF 7

SDP-83-110-6185

DEYE
M.O.A. XVIII ASSOCIATES
SUITE 2100 CHARLES CENTER SOUTH
36 S. CHARLES ST.
BALTO., MD. 21201

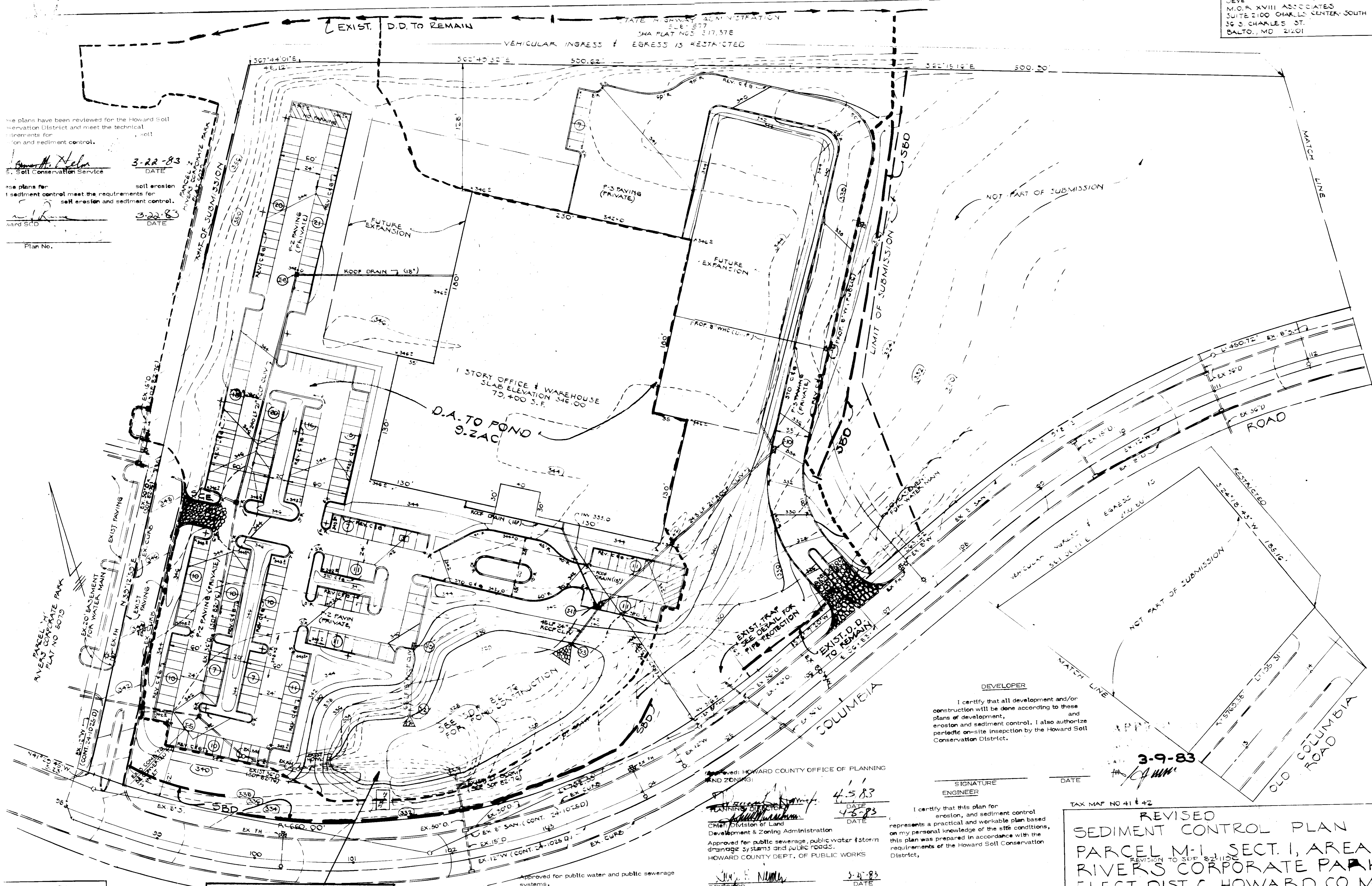
The plans have been reviewed for the Howard Soil Conservation District and meet the technical requirements for erosion and sediment control.

James M. Nela
Soil Conservation Service
DATE: 3-22-83

The plans for sediment control meet the requirements for soil erosion and sediment control.

James M. Nela
WARD SCD
DATE: 3-22-83

Plan No.



PREPARED BY
HUCKINS ASSOC., INC.
101 SHELL BLDG.
200 E. JOHNS RD.
TOWSON MD. 21284

POND DESIGN DATA
DRAIN AREA 10.1 AC
VOL. REQ. @ ELEV. 329.55 = 677 CY
VOL. PROV. @ ELEV. 329.55 = 722 CY
CLEANOUT @ ELEV. 329.00

Approved for public water and public sewerage systems.
HOWARD COUNTY HEALTH DEPT.

[Signature]
Director
DATE: 3-22-83

Approved: HOWARD COUNTY OFFICE OF PLANNING AND ZONING

[Signature]
Chief, Division of Land Development & Zoning Administration
Approved for public sewerage, public water & storm drainage systems and public roads.
HOWARD COUNTY DEPT. OF PUBLIC WORKS

[Signature]
DATE: 4-5-83

DEVELOPER

I certify that all development and/or construction will be done according to these plans of development, erosion and sediment control. I also authorize periodic on-site inspection by the Howard Soil Conservation District.

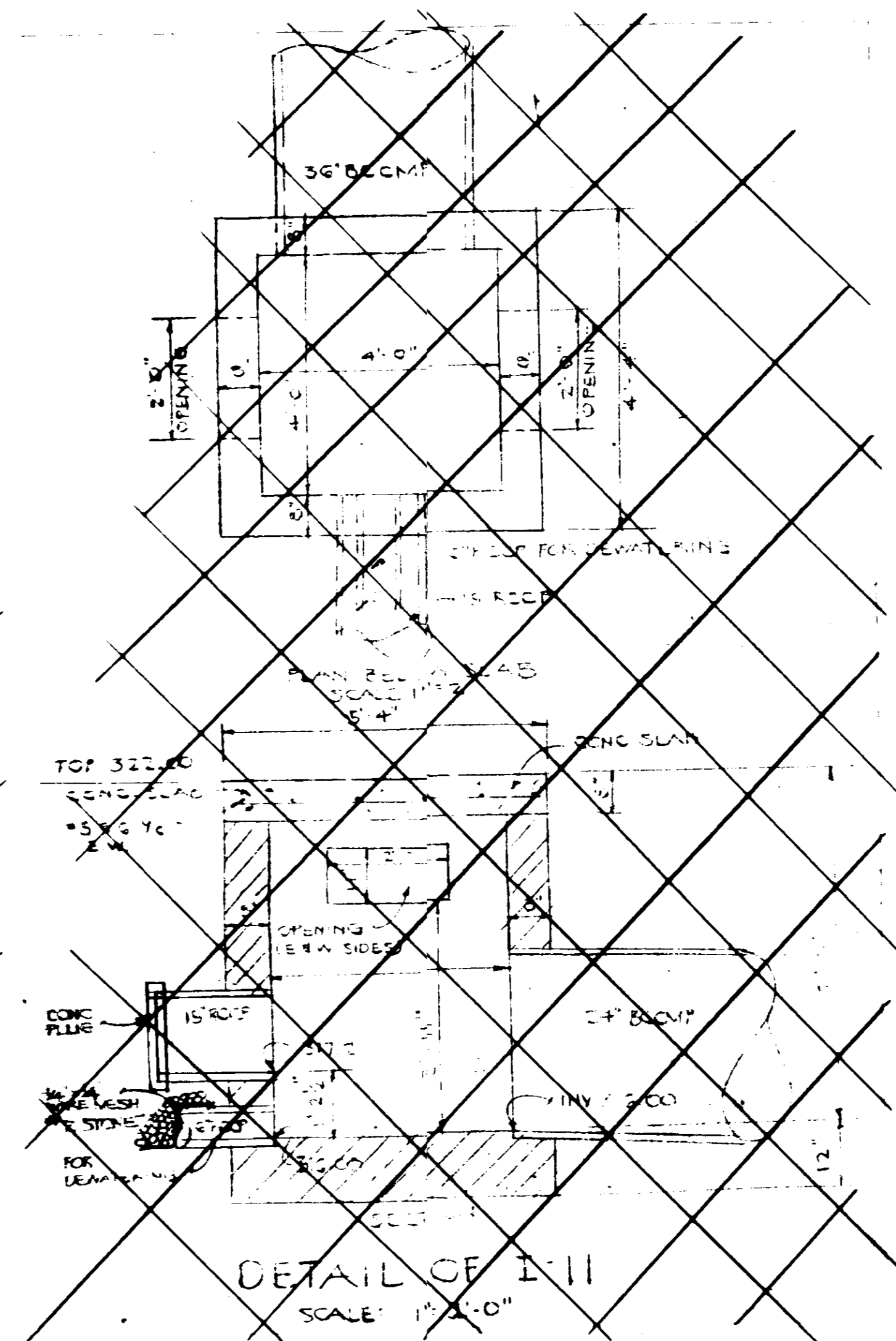
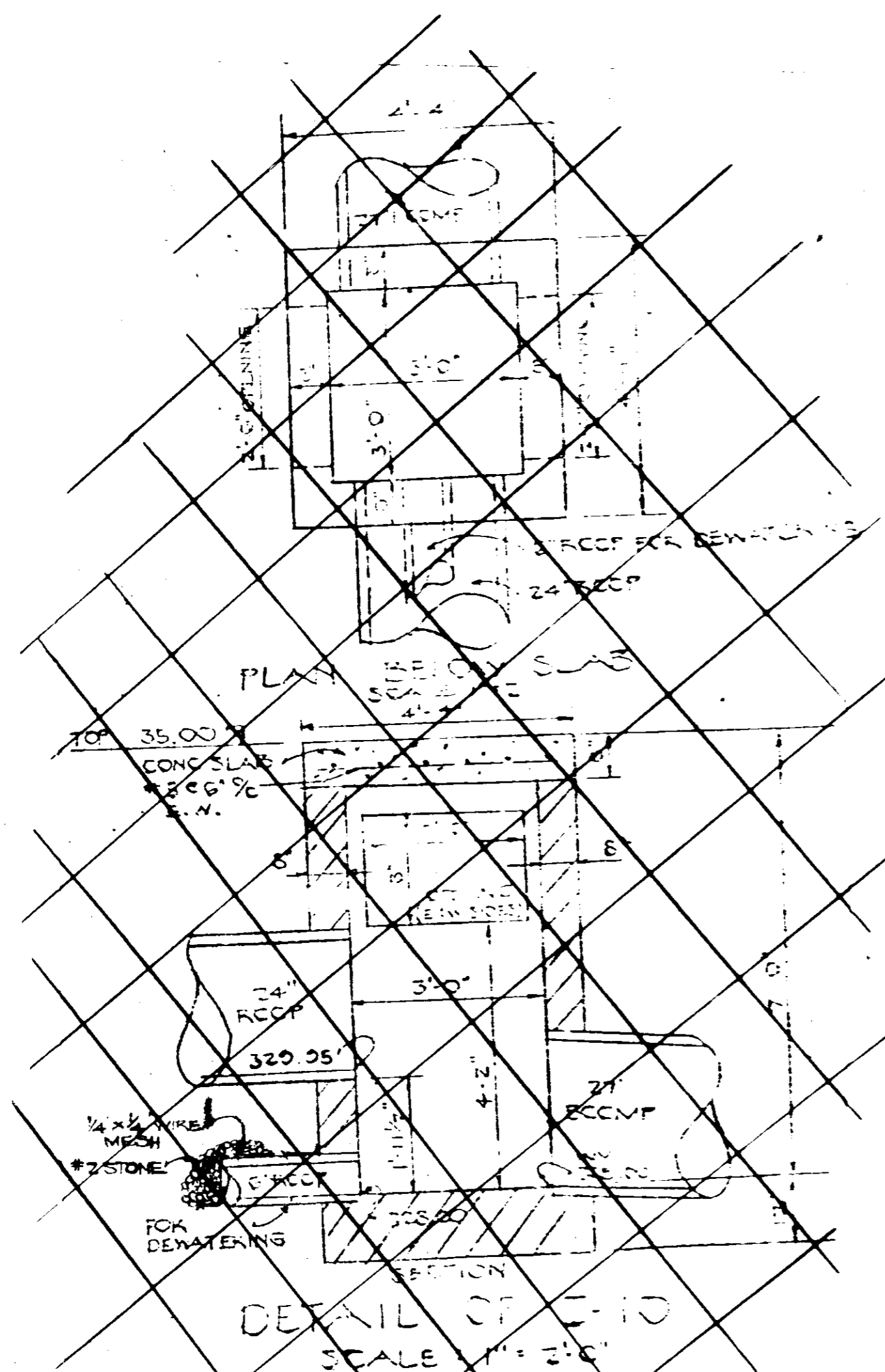
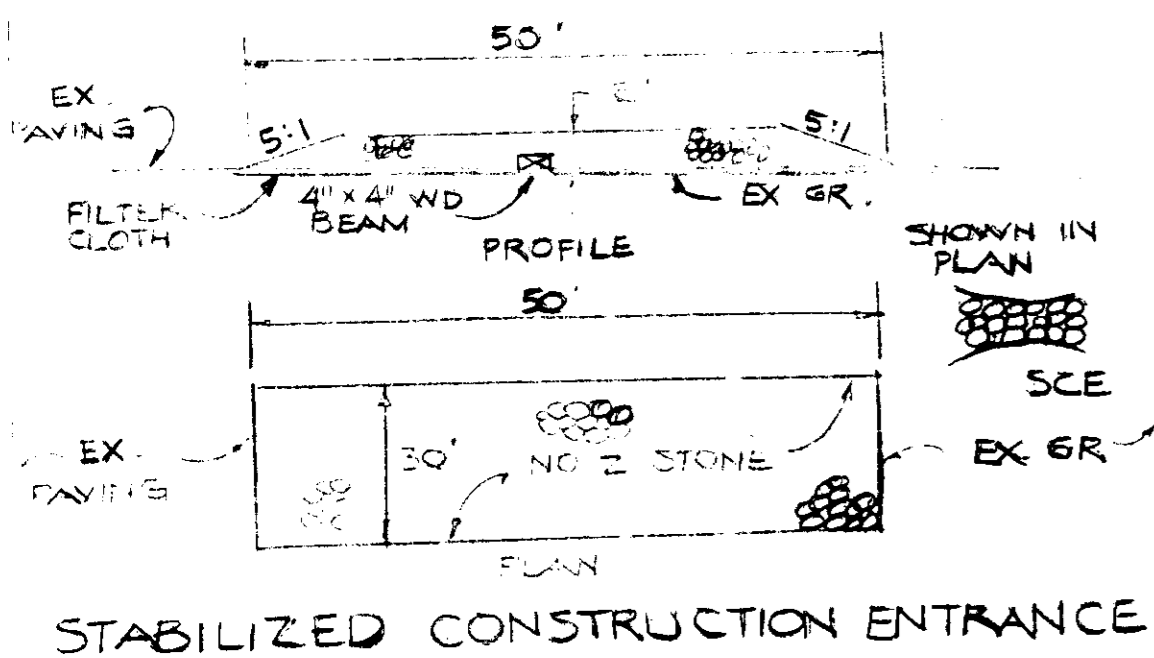
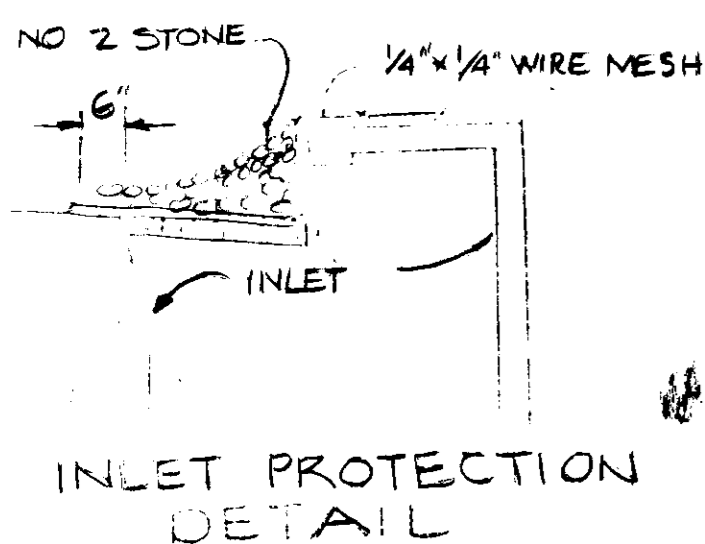
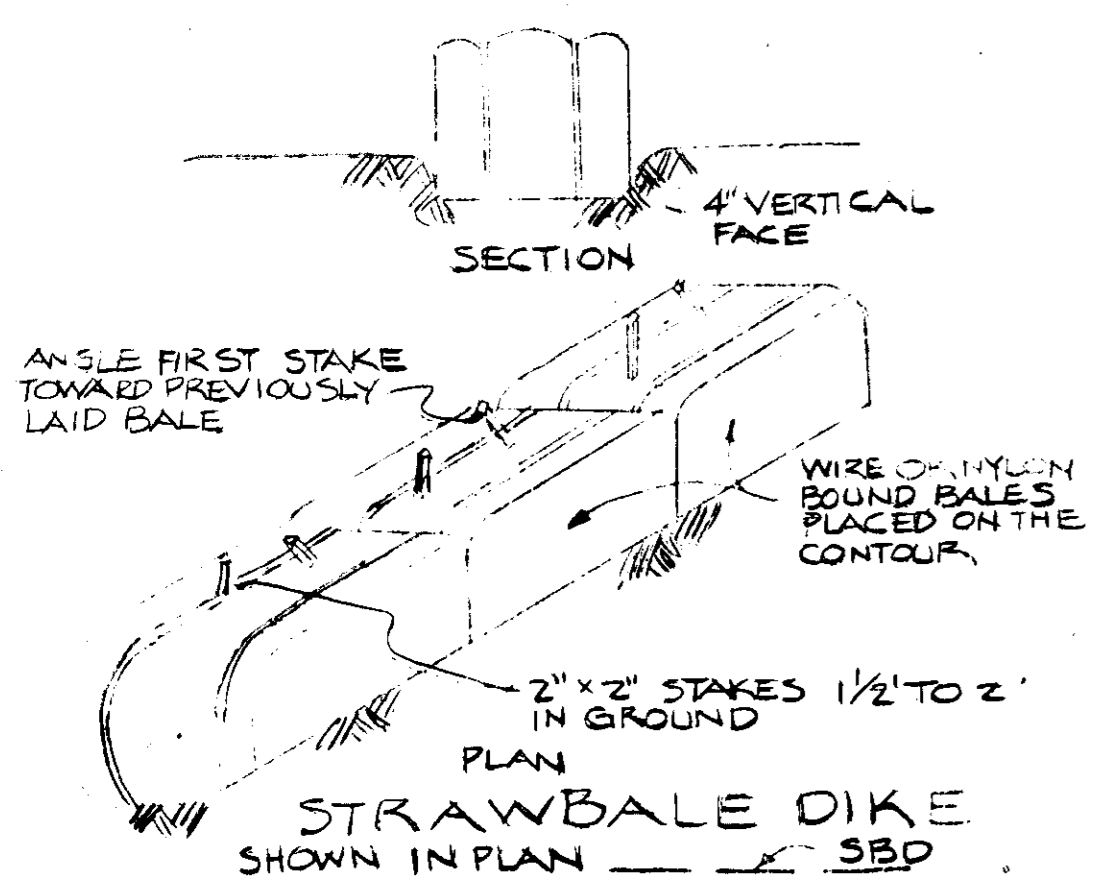
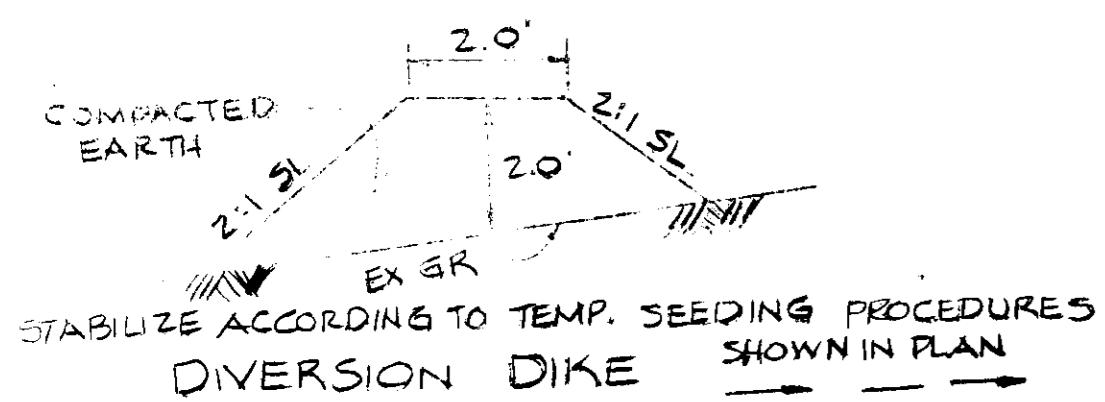
[Signature]
DATE: 3-9-83

I certify that this plan for erosion and sediment control represents a practical and workable plan based on my personal knowledge of the site conditions, this plan was prepared in accordance with the requirements of the Howard Soil Conservation District,

[Signature]
DATE: 3-2-83

TAX MAP NO 41-42

REVISED
SEDIMENT CONTROL PLAN
PARCEL M-1, SECT. 1, AREA I
RIVERS CORPORATE PARK
ELECT. DIST. 6 HOWARD CO., MD.
SCALE: 1" = 40' FEB. 11, 1983 5 OF 7

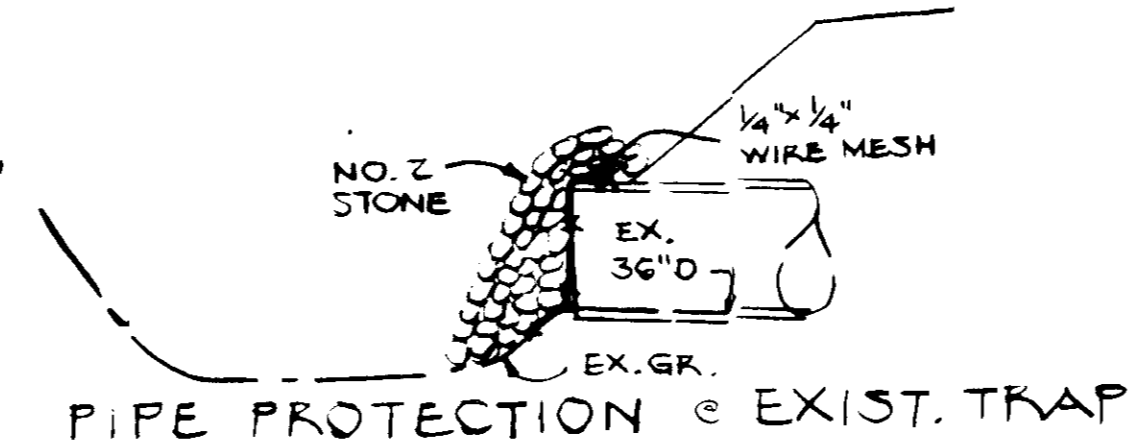


- NOTES:
1. Notify the Howard County Bureau of Inspection 48 hours before starting work.
 2. All sediment control devices are to remain in place until permission for removal has been obtained from the Howard County Bureau of Inspection and permit.
 3. Structural measures such as berms, dikes, traps, etc., shall be installed & stabilized according to the plan prior to any disturbance of the existing surface of the site.
 4. On-site implementation and maintenance of all sediment control measures including shut out of traps and berms & proper establishment of all planned vegetative measures, will be the responsibility of the developer or his representative on the site on a continuing day to day basis.
 5. All construction will be done in accordance with the standards and specifications for soil erosion & sediment control in developing areas.

- PERMANENT SEEDING PROCEDURES
1. Apply 50 lbs./1000 S.F. of fine stone.
 2. Apply fertilizer @ rate of 20 lbs. of 10-10-10 per 1000 S.F. on entire soil base.
 3. Harrow or disc fertilizer & incorporate into soil to a depth of 2 inches.
 4. Seed with RY 311 at rate of 8 lbs./1000 S.F. on entire 1000 sq. ft. area.
 5. Mulch with straw @ rate of 1.5 to 2.0 tons per acre (700-800/1000 S.F.)
 6. Anchor mulch with sprayed asphalt @ rate of 1 gal./50 S.F.
 7. No slope shall exceed 2:1.

- TEMPORARY SEEDING NOTES:
1. Seed in immediate 100' on 100' grid with 1 lb. ryegrass per 1000 S.F.
 2. Apply 25 lbs./1000 S.F. of pulverized soil to the entire 100' x 100' area.
 3. Apply 18.4 lbs./1000 S.F. of 10x10x10 or equivalent fertilizer.
 4. Harrow or disc lime and fertilizer into soil to a depth of at least 2 inch continue tillage until a reasonably uniform fine firm seedbed has been prepared on sloping land the final harrowing or discing should be on the contour.
 5. Mulch with straw @ 75 lbs./1000 S.F.
 6. Anchor mulch with sprayed asphalt @ rate of 0.1 gal./5 S.F.

- VEGETATIVE COVER OPTIONS
- | | |
|-------------------|--|
| Feb. 1 to May | 1. Sod
2. Seed & Mulch |
| May 1 to Aug. 15 | 1. Sod
2. Mulch, anchor, tool then seed during next seed period. |
| Aug. 15 to Nov. 1 | 1. Sod
2. Seed & Mulch |
| Nov. 1 to Feb. 1 | 1. Seed & Mulch until next period if ground is frozen
2. Mulch, anchor, tool then seed during next seed period. |



- SEQUENCE OF CONSTRUCTION
1. Obtain Grading Permit
 2. Notify Howard County Dept. of Permits and Licenses
 3. Install Stone Construction Erosion Areas and Straw Bale Dikes
 4. Construct Pond Now and later build permanent structures
 5. Rough grade site
 6. Install storm drains, Provide inlet protection
 7. Proceed with Building and Utility construction
 8. Place sub base material on areas to be paved
 9. Pave parking areas and stabilize remaining areas according to permanent seeding procedures
 10. Flush storm drains
 11. Pump standing water in ponds through 1-10 inch screens
 12. Remove muck to restore pond to design dimensions
 13. Install stone outfalls
 14. Complete pond design as per sheets 1 through 3
 15. Remove sediment control devices and stabilize these areas

APPROVED
PLANNING
OF HOWARD COUNTY
DATE 3-9-83
M. J. M.

<p>These plans for soil erosion and sediment control meet the requirements for soil erosion and sediment control.</p> <p><i>[Signature]</i> HOWARD SCD DATE 3-22-83</p>	<p>These plans have been reviewed for the Howard Soil Conservation District and meet the technical requirements for erosion and sediment control.</p> <p><i>[Signature]</i> U.S. SOIL CONSERVATION SERVICE DATE 3-22-83</p>
<p>ENGINEER</p> <p>I certify that this plan for erosion and sediment control represents a practical and workable plan based on my personal knowledge of the site conditions. This plan was prepared in accordance with the requirements of the Howard Soil Conservation District.</p> <p><i>[Signature]</i> DATE 3-24-83</p>	<p>Approved for public sewerage, public water & storm drainage systems and public roads</p> <p>HOWARD COUNTY DEPT. OF PUBLIC WORKS</p> <p><i>[Signature]</i> DATE 3-24-83</p>
<p>DEVELOPER</p> <p>I certify that all development and/or construction will be done according to these plans of development and erosion and sediment control. I also authorize periodic on-site inspection by the Howard Soil Conservation District.</p> <p><i>[Signature]</i> DATE 3-22-83</p>	<p>Approved for public water and public sewerage systems.</p> <p>HOWARD COUNTY HEALTH DEPT.</p> <p><i>[Signature]</i> DATE 3-22-83</p>
<p>DEVELOPER</p> <p>I certify that all development and/or construction will be done according to these plans of development and erosion and sediment control. I also authorize periodic on-site inspection by the Howard Soil Conservation District.</p> <p><i>[Signature]</i> DATE 4-5-83</p>	<p>APPROVED: HOWARD COUNTY OFFICE OF PLANNING AND ZONING.</p> <p><i>[Signature]</i> DATE 4-5-83</p>

DEVELOPER & OWNER
M.O.R XVIII ASSOCIATES
SUITE 2100 CHARLES CENTER SOUTH
36 S CHARLES ST
BALTO, MD 21201
ENGINEER
HUDLINS ASSOCIATES INC.
101 SHELL BLDG
200 E JOWDA RD
TOWSON, MD 21204

REVISED
SEDIMENT CONTROL PLAN
PARCEL M-1, SECT. 1, AREA 1
RIVERS CORPORATE PARK
ELECT. DIST. 6 HOWARD CO., MD
SCALE: AS SHOWN
FEB. 11, 1983 6 OF 7
SDP-83-110c G188

STATE OF MARYLAND ADMINISTRATION
 SHA PLAT NO. 11151E
 VEHICULAR INGRESS & EGRESS IS RESTRICTED

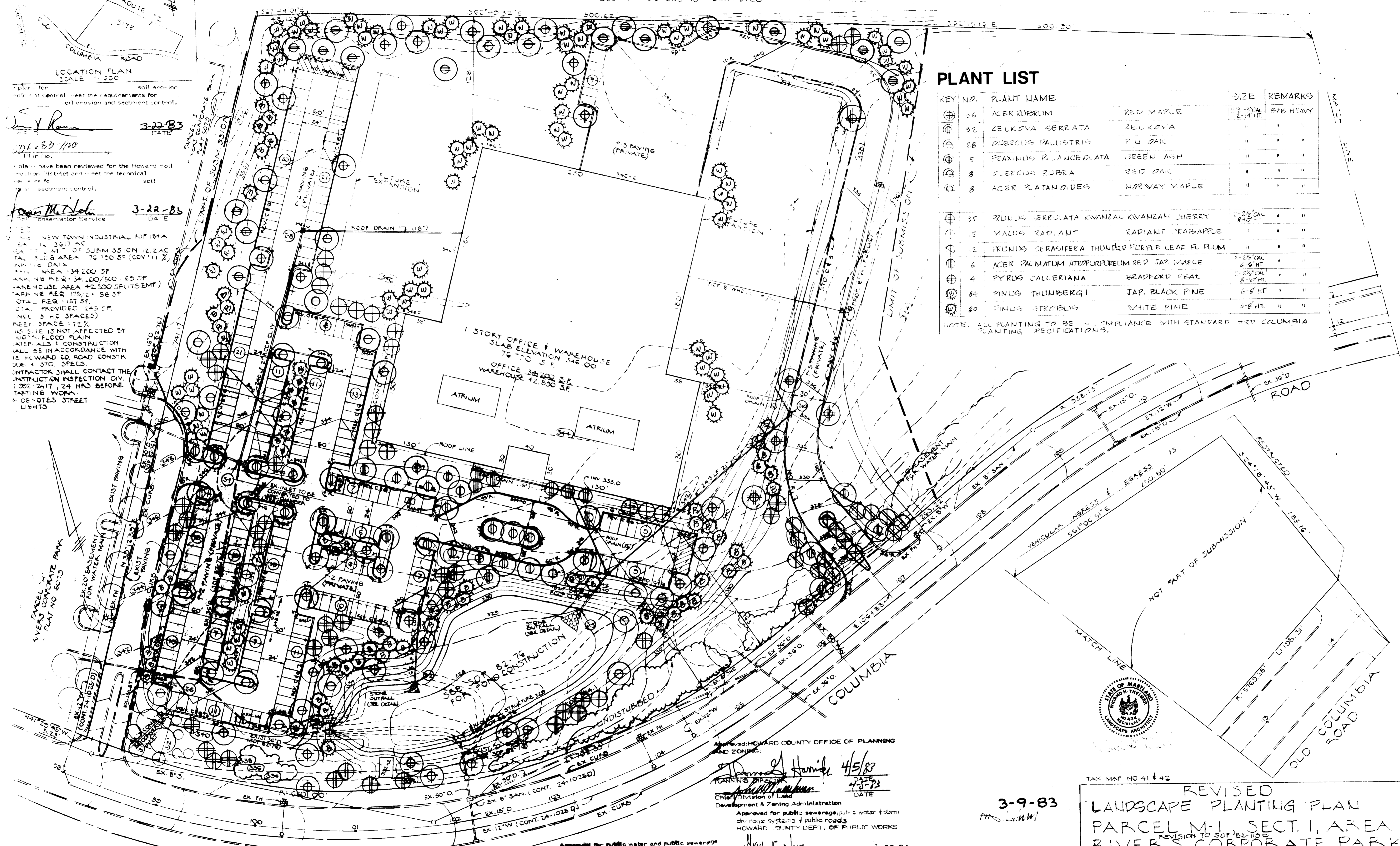
LOCATION PLAN
 SCALE 1"=200'

Plan for...
 DATE 3-22-83
 DATE 3-22-83

NEW TOWN INDUSTRIAL FDP 18+A
 SUBMISSION 12 ZAC
 TOTAL BLDG AREA 79,700 SF (COV. 11%)
 OFFICE AREA 34,200 SF
 WAREHOUSE AREA 42,500 SF (175 ENT)
 TOTAL REQ. 157 SF
 TOTAL PROVIDED 245 SF
 (INCLUDES 3 HC SPACES)
 REEF SPACE 172%
 THIS SITE IS NOT AFFECTED BY
 FLOOD PLAIN
 MATERIALS & CONSTRUCTION
 SHALL BE IN ACCORDANCE WITH
 THE HOWARD CO. ROAD CONSTR.
 CODE & STD. SPECS.
 CONTRACTOR SHALL CONTACT THE
 INSPECTION DIVISION
 1-302-2417, 24 HRS BEFORE
 STARTING WORK.
 DE-VOTES STREET LIGHTS

PREPARED BY
 JOKINS ASSOC., INC.
 SHELL BLDG.
 10 E. JOFFA RD.
 WYSON MD. 21204

NEU VALLEY NURSERY
 ELK RIDGE, MD. 21227 796-4195



PLANT LIST

KEY NO.	PLANT NAME	COMMON NAME	SIZE	REMARKS
36	ACER RUBRUM	RED MAPLE	12-14' HT.	8" B. HEAVY
32	ZELKOVA SERRATA	ZELKOVA	" " "	" " "
28	QUERCUS PALUSTRIS	P.O. OAK	" " "	" " "
5	FRAXINUS P. LANCEOLATA	GREEN ASH	" " "	" " "
8	QUERCUS RUBRA	RED OAK	" " "	" " "
8	ACER PLATANOIDES	NORWAY MAPLE	" " "	" " "
35	PRUNUS SERRULATA KWANZAN	KWANZAN CHERRY	12-14' CAL.	" " "
15	MALUS RADIANT	RADIANT CRABAPPLE	" " "	" " "
12	PRUNUS CERASIFERA THUNBERGII	PURPLE LEAF PLUM	" " "	" " "
6	ACER PALMATUM ATRORUBRUM	RED JAP. MAPLE	6-8' HT.	" " "
4	PYRUS CALLERIANA	BRADFORD PEAR	6-8' HT.	" " "
84	PINUS THUNBERGII	JAP. BLACK PINE	6-8' HT.	" " "
80	PINUS STROBUS	WHITE PINE	6-8' HT.	" " "

NOTE: ALL PLANTING TO BE IN COMPLIANCE WITH STANDARD HED COLUMBIA PLANTING SPECIFICATIONS.



Approved: HOWARD COUNTY OFFICE OF PLANNING AND ZONING

Donald Hamid 4/5/83
 PLANNING DIRECTOR DATE
 4-3-83 DATE

Approved for public water and public sewerage systems
 HOWARD COUNTY HEALTH DEPT.

James F. Nimm 3-25-83
 DIRECTOR DATE

William S. Edy 3-24-83
 CHIEF BUREAU OF ENGINEERING DATE

3-9-83
 M.S. G.W.

TAX MAP NO 41-42
 REVISED
LANDSCAPE PLANTING PLAN
 PARCEL M-1, SECT. 1, AREA I
 RIVERS CORPORATE PARK
 ELECT. DIST. 6 HOWARD CO, MD.
 SCALE: 1"=40' FEB. 11, 1983 7 OF 7