

HOWARD COUNTY SOIL CONSERVATION DISTRICT  
TECHNICAL REQUIREMENTS.

U.S. SOIL CONSERVATION SERVICE DATE  
THIS DEVELOPMENT IS APPROVED FOR EROSION AND SEDIMENT CONTROL BY THE HOWARD SOIL CONSERVATION DISTRICT.  
APPROVED: *[Signature]* DATE 5-22-83  
DISTRICT HOWARD SOIL CONSERVATION DISTRICT

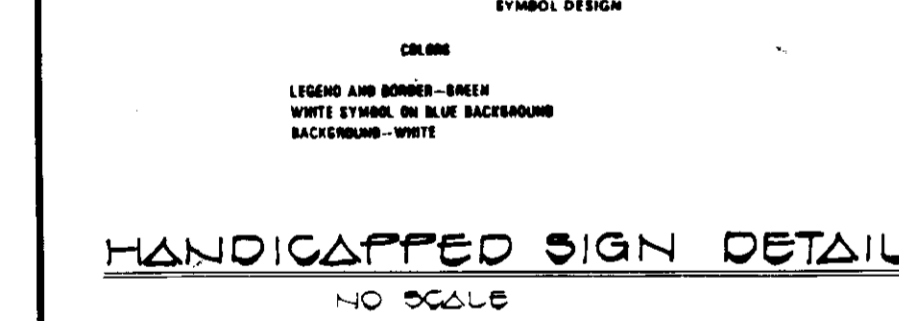
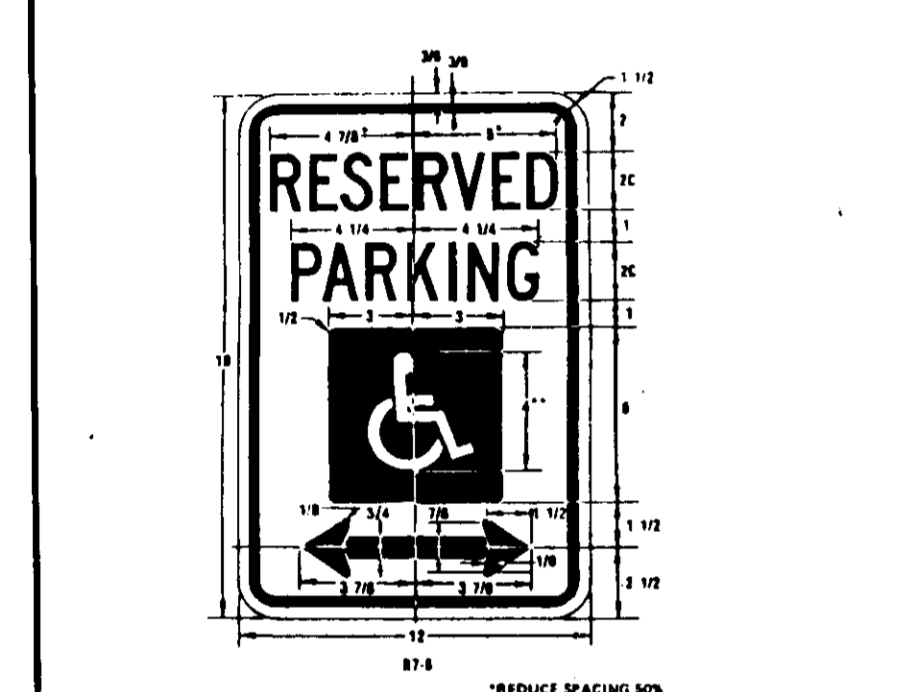
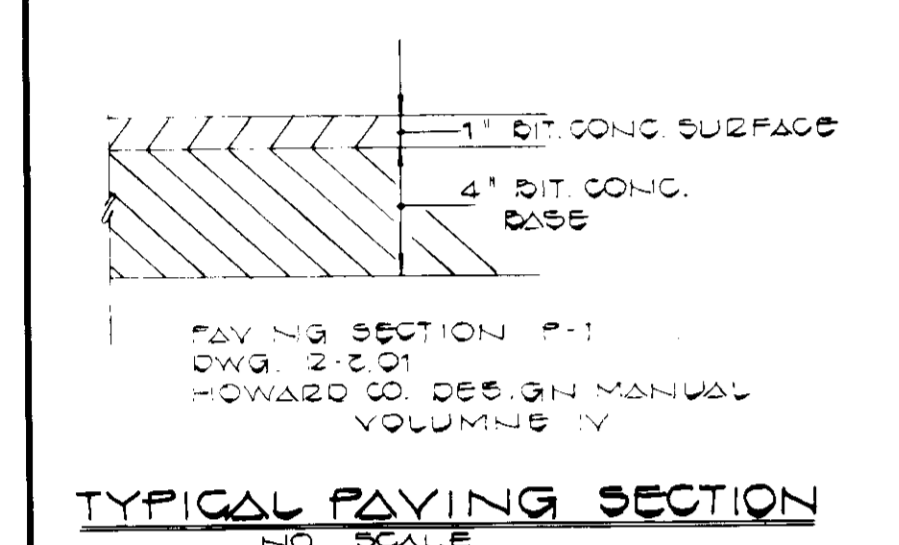
APPROVED: DEPARTMENT OF PUBLIC WORKS FOR STORM DRAINAGE SYSTEMS AND ROADS.  
DIRECTOR, PUBLIC WORKS DATE

APPROVED: OFFICE OF PLANNING AND ZONING  
DIRECTOR, PLANNING AND ZONING DATE 6-7-83

APPROVED: HOWARD COUNTY HEALTH DEPARTMENT. NO SANITARY FACILITIES. PARKING AREA ONLY.  
HEALTH OFFICER DATE

APPROVED: HOWARD COUNTY HEALTH DEPARTMENT. NO SANITARY FACILITIES. PARKING AREA ONLY.  
HEALTH OFFICER DATE

APPROVED: HOWARD COUNTY HEALTH DEPARTMENT. NO SANITARY FACILITIES. PARKING AREA ONLY.  
HEALTH OFFICER DATE

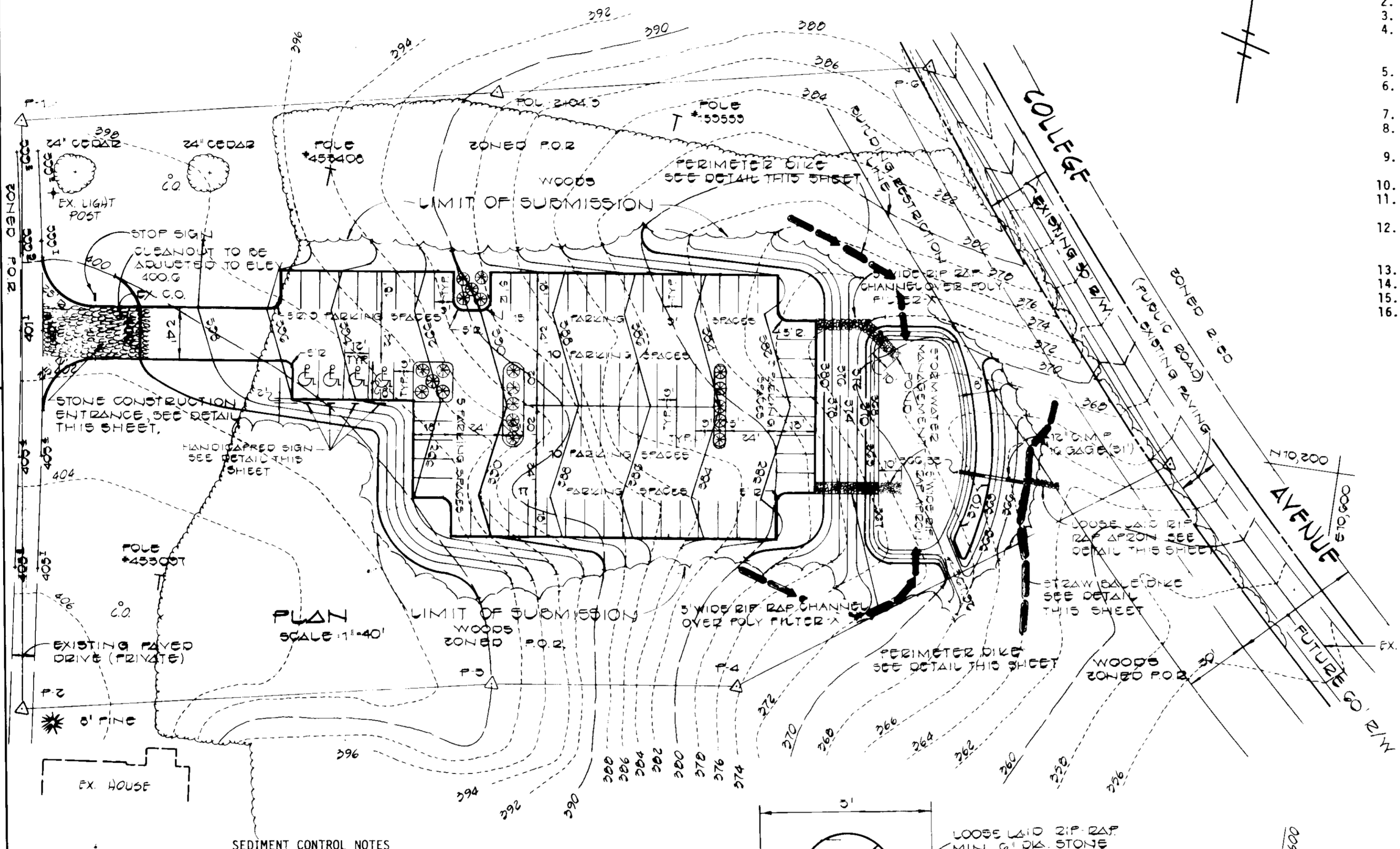
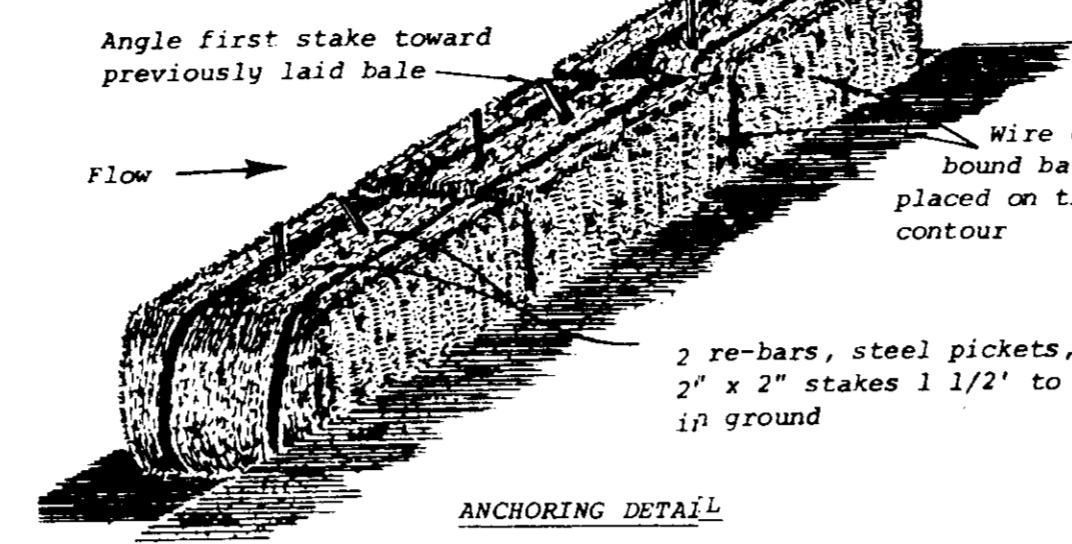
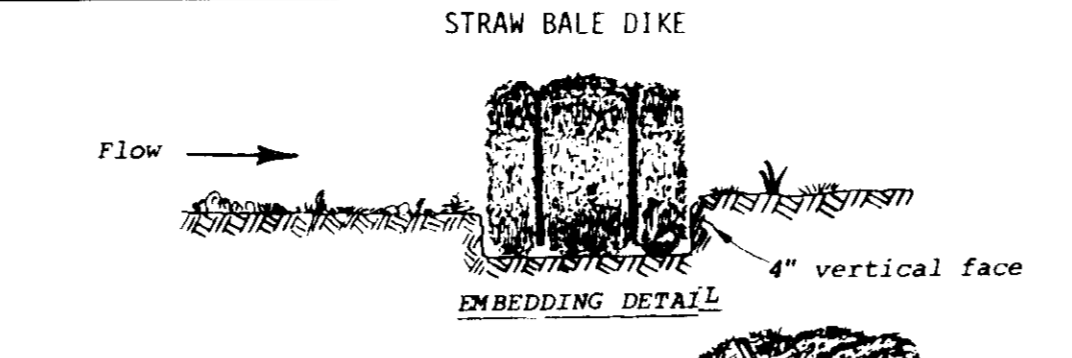
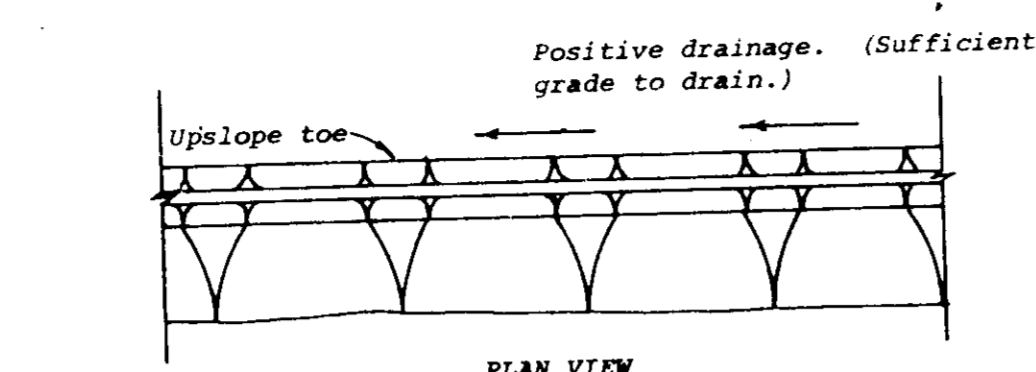
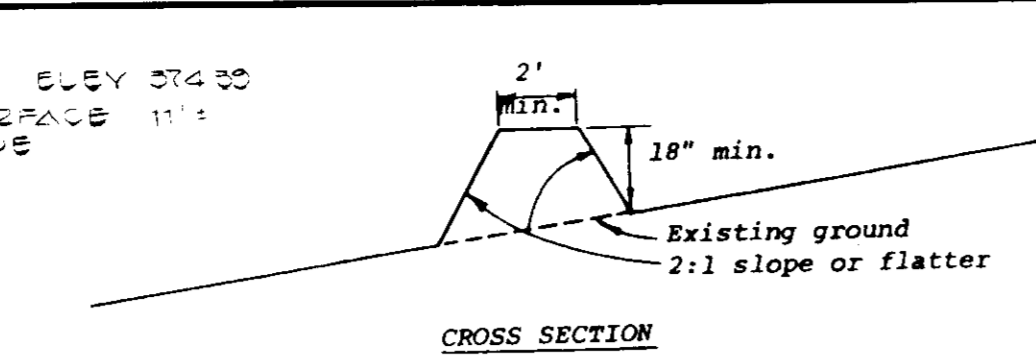


ENGINEER'S CERTIFICATE  
I HEREBY CERTIFY THAT THIS PLAN FOR EROSION AND SEDIMENT CONTROL PRESENTS A PRACTICAL AND WORKABLE PLAN BASED ON MY PERSONAL KNOWLEDGE OF THE SITE CONDITIONS AND THAT IT WAS PREPARED IN ACCORDANCE WITH THE REQUIREMENTS OF THE HOWARD COUNTY SOIL CONSERVATION DISTRICT.  
SIGNATURE OF ENGINEER DATE 4/21/83

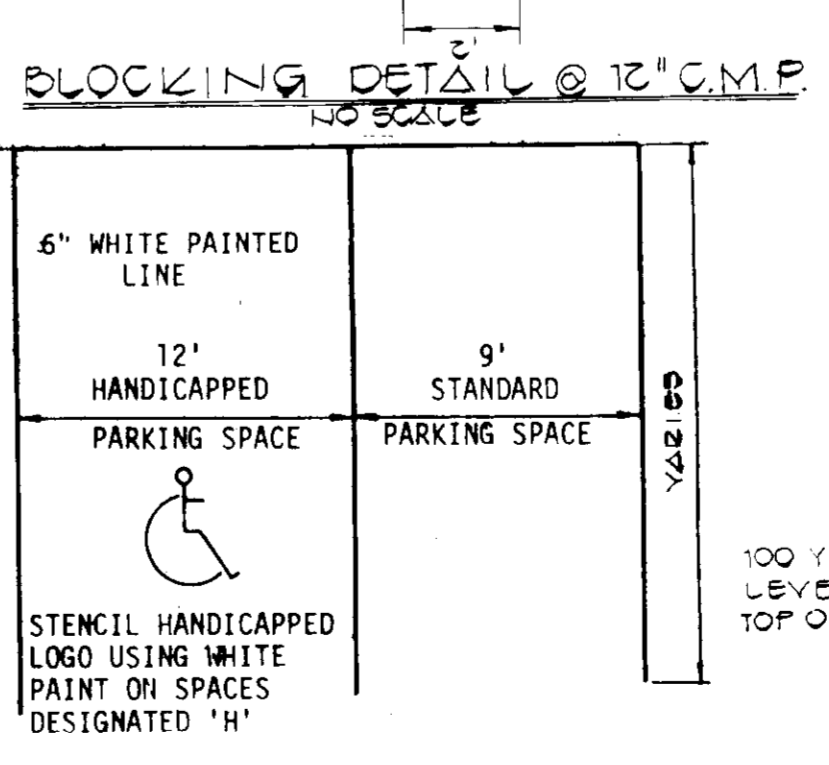
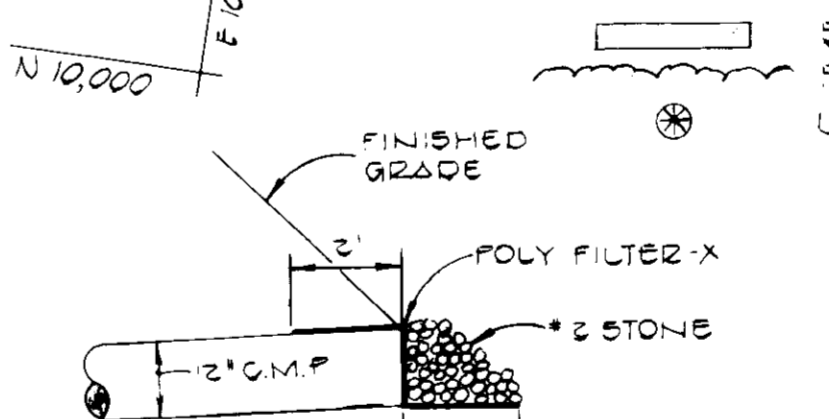
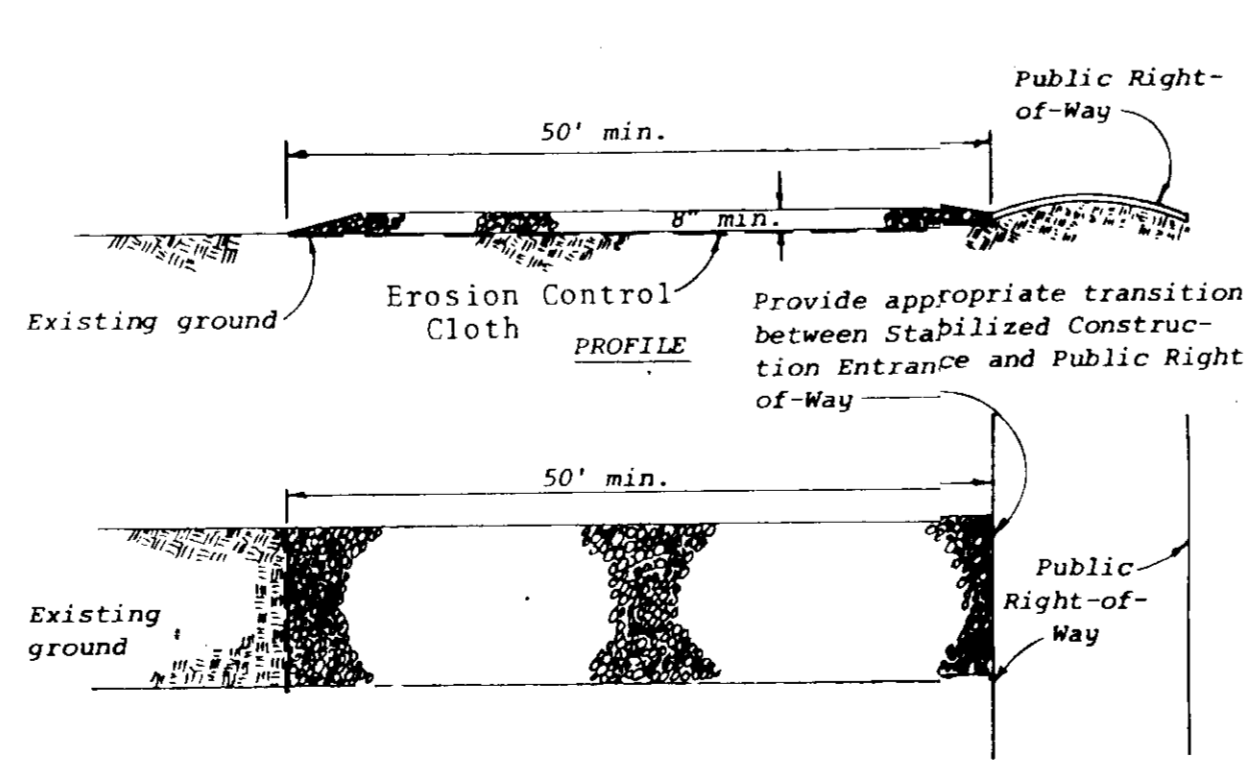
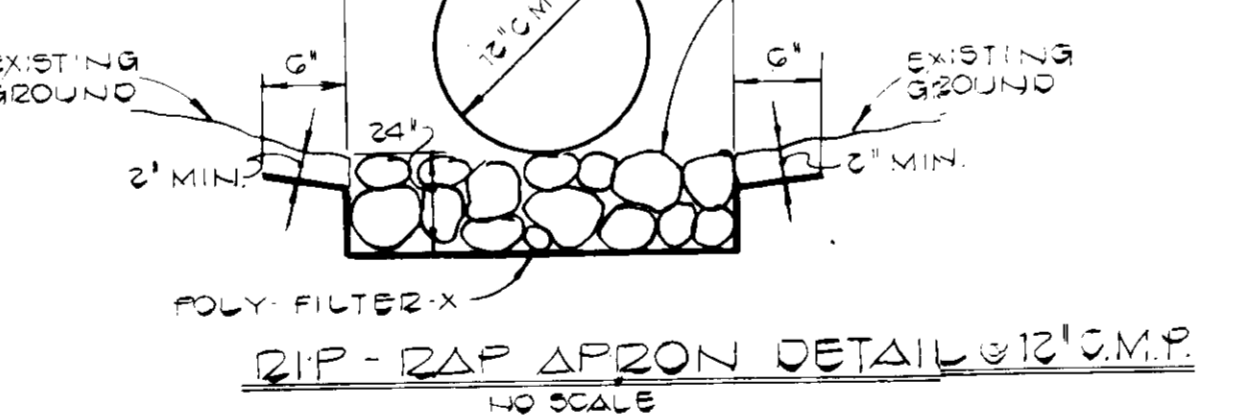
DEVELOPER'S CERTIFICATE  
"I/WE CERTIFY THAT ALL DEVELOPMENT AND CONSTRUCTION WILL BE DONE ACCORDING TO THIS PLAN OF DEVELOPMENT AND PLAN FOR EROSION AND SEDIMENT CONTROL AND THAT ALL RESPONSIBLE PERSONNEL INVOLVED IN THE CONSTRUCTION PROJECT WILL HAVE A CERTIFICATE OF ATTENDANCE AT A DEPARTMENT OF NATURAL RESOURCES APPROVED TRAINING PROGRAM FOR THE CONTROL OF SEDIMENT AND EROSION BEFORE BEGINNING THE PROJECT. I ALSO AUTHORIZE PERIODIC ON-SITE INSPECTION BY THE HOWARD SOIL CONSERVATION DISTRICT OR THEIR AUTHORIZED AGENTS, AS ARE DEEMED NECESSARY."  
SIGNATURE OF DEVELOPER DATE 5/1/83

SITE ANALYSIS:  
DISTURBED AREA: 1.3 AC.  
IMPERVIOUS AREA: 0.7 AC.  
AREA TO BE VEGETATED: 0.6 AC.  
FISHER, COLLINS & CARTER, INC  
CONSULTING ENGINEERS & LAND SURVEYORS  
8906 COURT AVENUE  
ELLICOTT CITY, MARYLAND 21043  
PHONE: (301) 491-2855

BENCH MARKS:  
NO. 00 3044005 R  
ELEV. 374.00  
3'4" BELOW SURFACE  
WEST OF 4 COLLEGE AVENUE

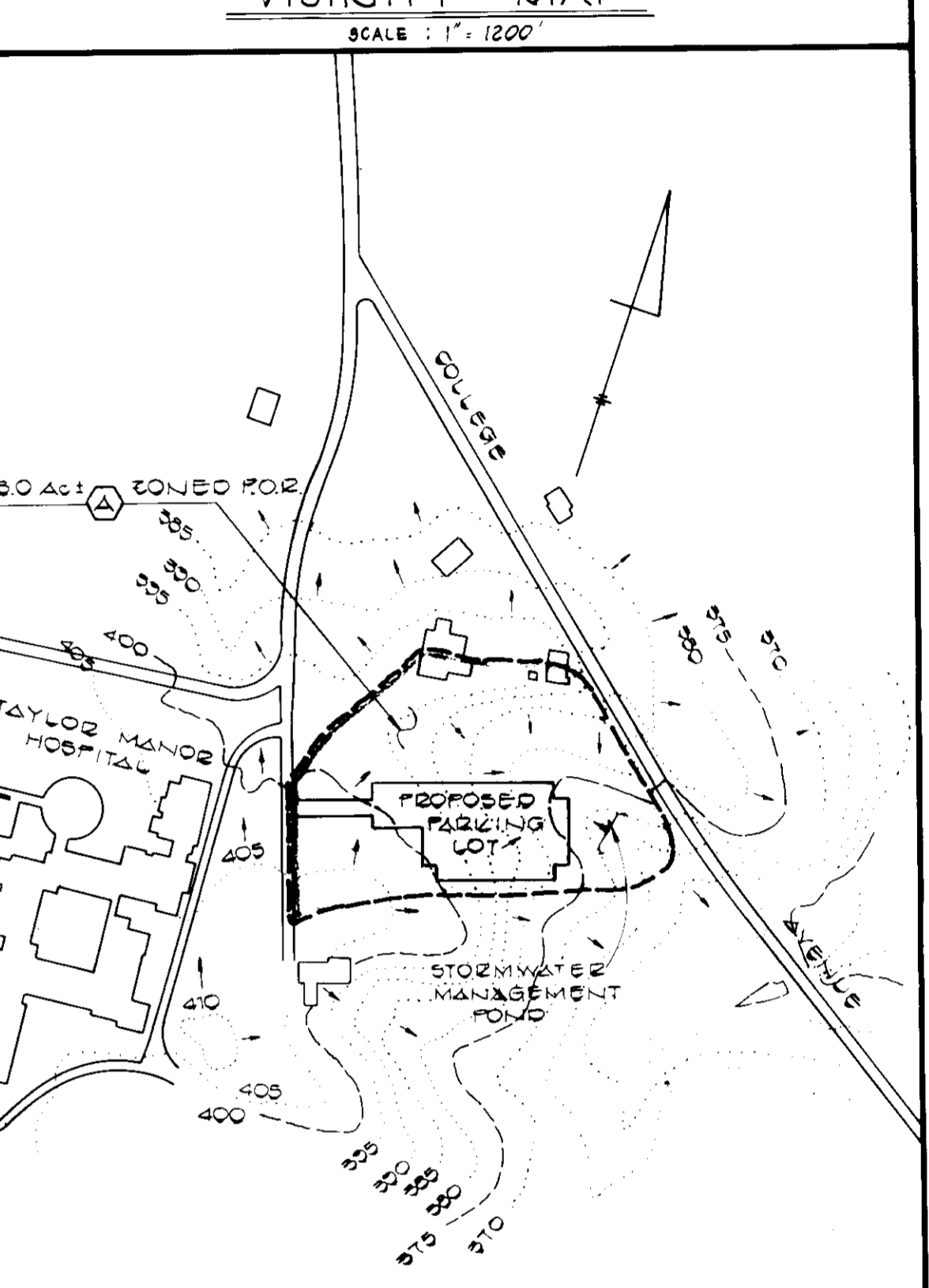
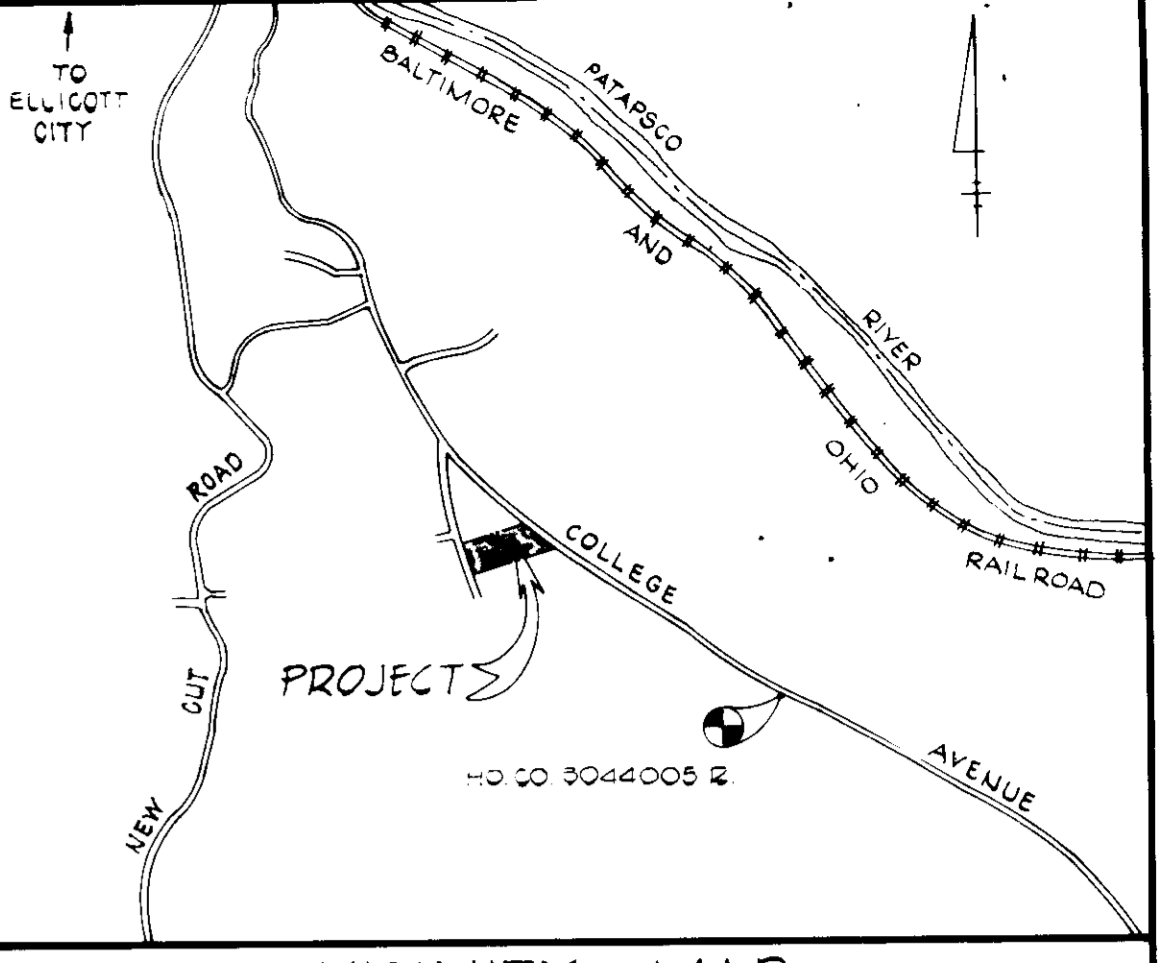
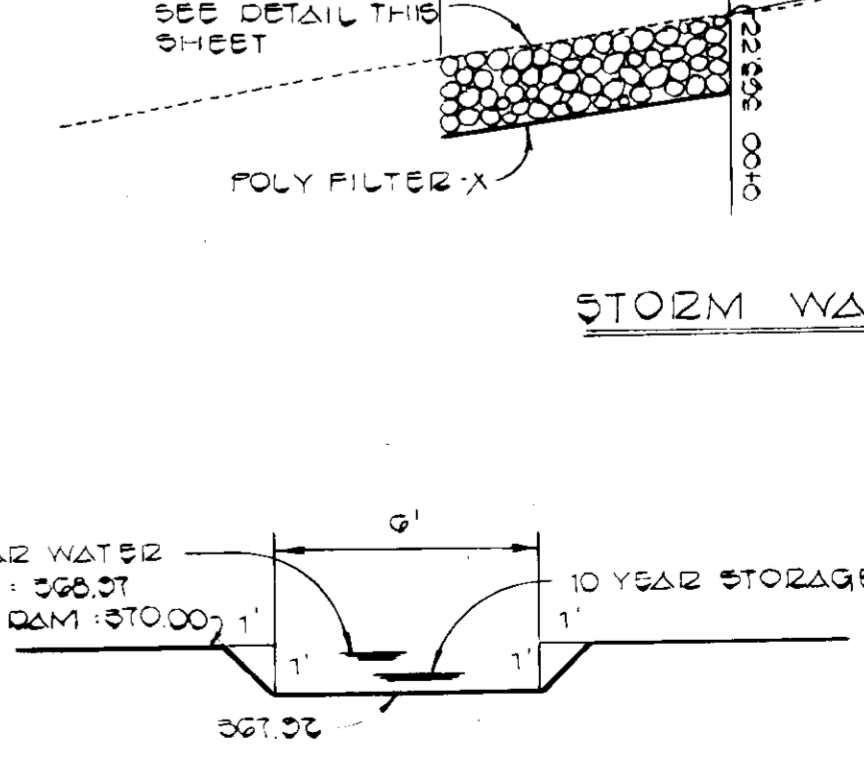
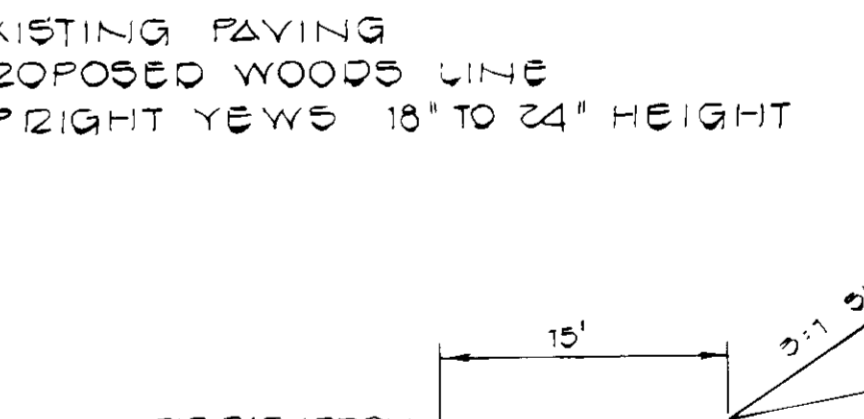
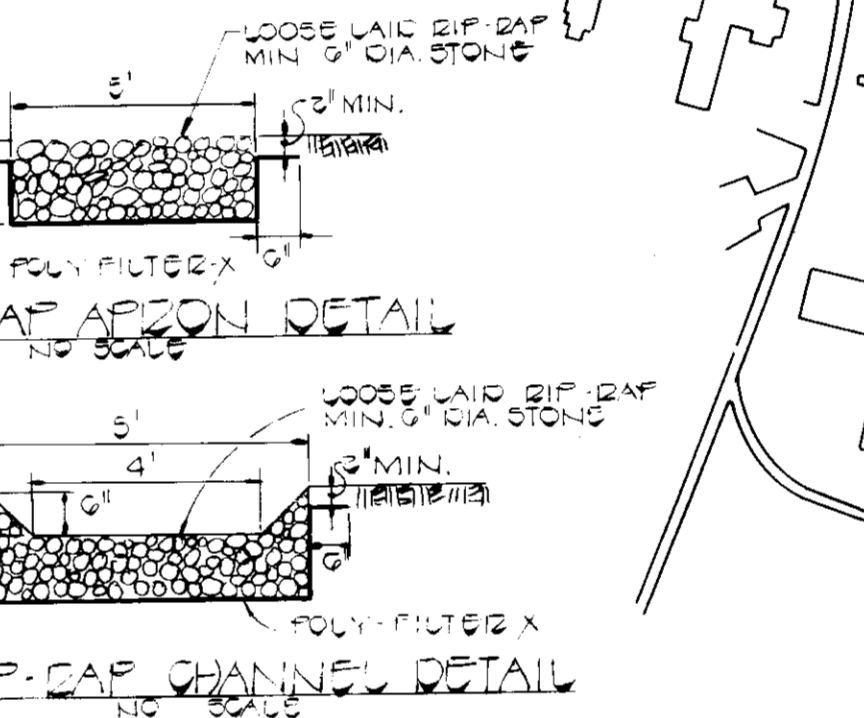


- SEDIMENT CONTROL NOTES
- Specifications for the Sediment Control Details shown hereon are included in the U.S.D.A. Soil Conservation Service "Standards and Specifications for Soil Erosion and Sediment Control in Developing Areas."
  - The developer shall notify the Howard County Office of Inspection and Permits at least 24 hours prior to beginning any construction shown hereon (992-2433).
  - Sediment control structures to be constructed prior to any on-site grading or disturbance to any existing surface material, and are to be stabilized as soon as constructed.
  - All sediment control structures to remain in place until permission for their removal has been obtained from the Howard County Office of Inspection and Permits. (992-2433).
  - All graded areas not to be sodded shall be stabilized by seeding and mulching in accordance with the following:
    - Site Preparation
      - Harrow or disc in areas proposed to be seeded the following materials:
        - Pulverized limestone at 2 tons/acre.
        - Commercial fertilizer 10-10-10 at 3/4 tons/acre.
        - Super phosphate at 600 lbs./acre.
    - Seeding
      - Sow the following seed mixture at the rate of 200 lbs./acre with a mechanical spreader:
        - Temporary: Italian or Perennial Rye Grass
        - Permanent: 40% Marion Blue Grass, 40% South Dakota Blue Grass and 20% Penn Lawn Creeping Fescue.
      - The seeded area shall then be raked with a York Rake (a minimum of 2 passes) covered and compacted with Cultipacker or other approved method.
    - Mulching
      - Seeded areas shall be uniformly mulched immediately after seeding with unweathered small grain straw at the rate of 1 1/2 - 2 tons/acre.
      - Tie mulch down with liquid asphalt at 0.1 gal./s.y. or emulsified asphalt at 0.04 gal./s.y. or mulch netting.



- GENERAL NOTES
- TOTAL AREA OF PARCEL - 6.7 AC.±
  - PRESENT ZONING FOR - PLANNED OFFICE RESEARCH - SEE P.C. CASE NO. 100
  - PROPERTY IS RECORDED IN LIBER 628, AT FOLIO 307
  - THE PROPERTY IS LOCATED ON TAX MAP 25, PARCEL 74
  - PARKING DATA
    - NUMBER OF PARKING SPACES PROVIDED = 80
    - TOTAL NUMBER OF HANDICAPPED SPACES REQUIRED = 4
    - TOTAL NUMBER OF HANDICAPPED SPACES PROVIDED = 4
    - TOTAL AREA OF PARKING LOT = 0.64 AC.±
    - AREA OF LANDSCAPED ISLANDS REQUIRED = 5x x 0.64 = 0.03 AC.±
    - AREA OF LANDSCAPED ISLANDS PROVIDED = 0.03 AC.±
    - OPEN SPACE REQUIRED = 20% x 6.7 AC.± = 1.34 AC.±
    - OPEN SPACE PROVIDED = 5.9 AC.±
  - THE CONTRACTOR SHALL NOTIFY THE HOWARD COUNTY CONSTRUCTION INSPECTION/SURVEY DIVISION 24 HOURS PRIOR TO COMMENCEMENT OF WORK AT 992-2418.
  - HANDICAPPED FACILITIES TO BE CONSTRUCTED IN ACCORDANCE WITH THE "DESIGN OF BARRIER FREE FACILITIES" AND THE "MARYLAND BUILDING CODE FOR THE HANDICAPPED AND AGED."
  - ALL PAVING AND STORM DRAIN CONSTRUCTION SHALL BE IN ACCORDANCE WITH THE HOWARD COUNTY ROAD CONSTRUCTION CODE AND STANDARD SPECIFICATIONS.
  - EXISTING UTILITIES SHOWN HEREON HAVE BEEN LOCATED FROM FIELD AND OFFICE INFORMATION. THE CONTRACTOR SHALL DETERMINE THE EXACT LOCATION OF EXISTING UTILITIES TO HIS OWN SATISFACTION BEFORE MAKING ANY CONNECTION THERETO OR EXCAVATING IN THE AREA THEREOF.
  - THE CONTRACTOR SHALL NOTIFY MISS UTILITY AT 559-0100 A MINIMUM OF THREE DAYS PRIOR TO BEGINNING ANY CONSTRUCTION SHOWN HEREON.
  - THE PARKING LOT WILL BE USED FOR STAFF PERSONNEL AND VISITORS.

- CONSTRUCTION SEQUENCE
- OBTAIN GRADING PERMIT.
  - CONSTRUCT STONE CONSTRUCTION ENTRANCE AS SHOWN ON PLAN.
  - CONSTRUCT STORM WATER MANAGEMENT POND AND STABILIZE USING TEMPORARY SEEDING.
  - THE 12" C.M.P. SHALL BE BLOCKED IN ACCORDANCE WITH THE DETAIL ON THIS SHEET. THE 12" C.M.P. SHALL REMAIN BLOCKED UNTIL SUCH TIME WHEN THE SEDIMENT BASIN TRANSITIONS TO FUNCTION AS A STORM WATER MANAGEMENT POND.
  - INSTALL STRAW BALE DIKE.
  - GRADE PARKING LOT TO SUBGRADE AND STABILIZE SLOPE AREAS USING PERMANENT SEEDING.
  - INSTALL BASE COURSE.
  - DURING CONSTRUCTION, SEDIMENT SHALL BE REMOVED FROM THE STORM WATER MANAGEMENT POND WHEN THE CLEANOUT ELEVATION 367.20 HAS BEEN REACHED.
  - AFTER EACH RAINFALL, THE CONTRACTOR SHALL INSPECT AND PROVIDE NECESSARY MAINTENANCE ON THE SEDIMENT AND EROSION CONTROL STRUCTURES SHOWN HEREON.
  - THE SEDIMENT BASIN SHALL BE DEWATERED BY PUMPING.
  - THE SEDIMENT FROM THE STORM WATER MANAGEMENT POND SHALL BE PLACED ALONG THE NORTH SIDE OF THE PARKING LOT.
  - THE STORM WATER MANAGEMENT POND SHALL BE GRADED IN ACCORDANCE WITH SHEET ONE AND STABILIZED IN ACCORDANCE WITH THE PERMANENT SEEDING SPECIFICATIONS IN THE SEDIMENT CONTROL NOTES. INSTALL RIP RAP APRONS.
  - REMOVE STRAW BALE DIKE AND STABILIZE WITH PERMANENT SEEDING.
  - REMOVE STONE CONSTRUCTION ENTRANCE.
  - CLEAN BASE COURSE, APPLY TACK COAT TO BASE COURSE AND LAY SURFACE COURSE.
  - ALL DISTURBED AREAS DUE TO REMOVAL OF SEDIMENT CONTROL MEASURES SHALL BE GRADED AND STABILIZED BY PERMANENT SEEDING.



APPROVED  
DATE 3-23-83  
*[Signature]*

TAYLOR MANOR HOSPITAL  
PROPOSED PARKING LOT  
STORMWATER MANAGEMENT POND  
SITE DEVELOPMENT PLAN  
TAYLOR MANOR HOSPITAL  
PARKING LOT  
2ND ELECTION DIST. HOWARD CO MARYLAND  
SCALE - AS SHOWN FEBRUARY 21, 1983