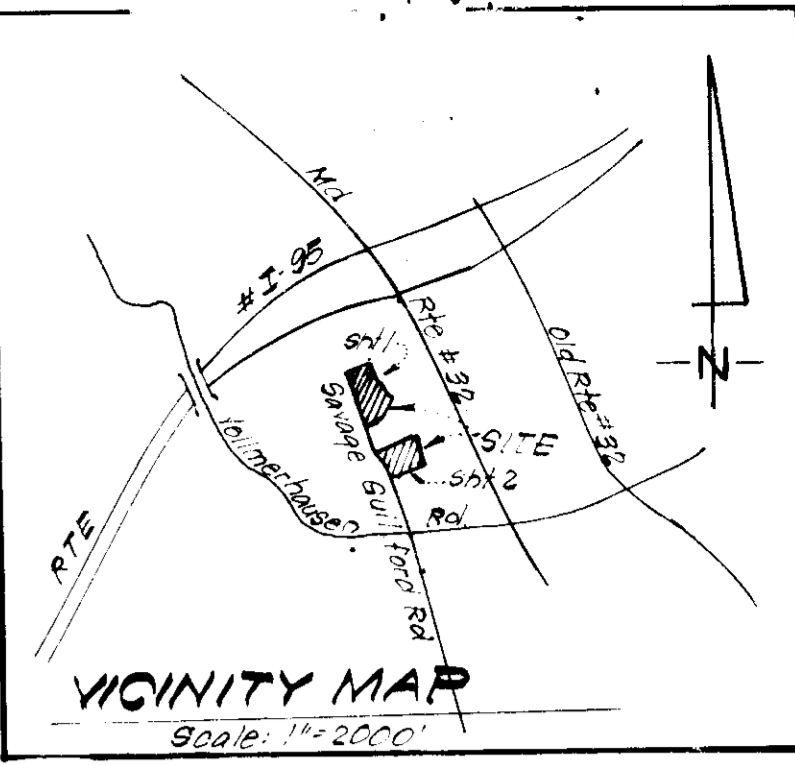
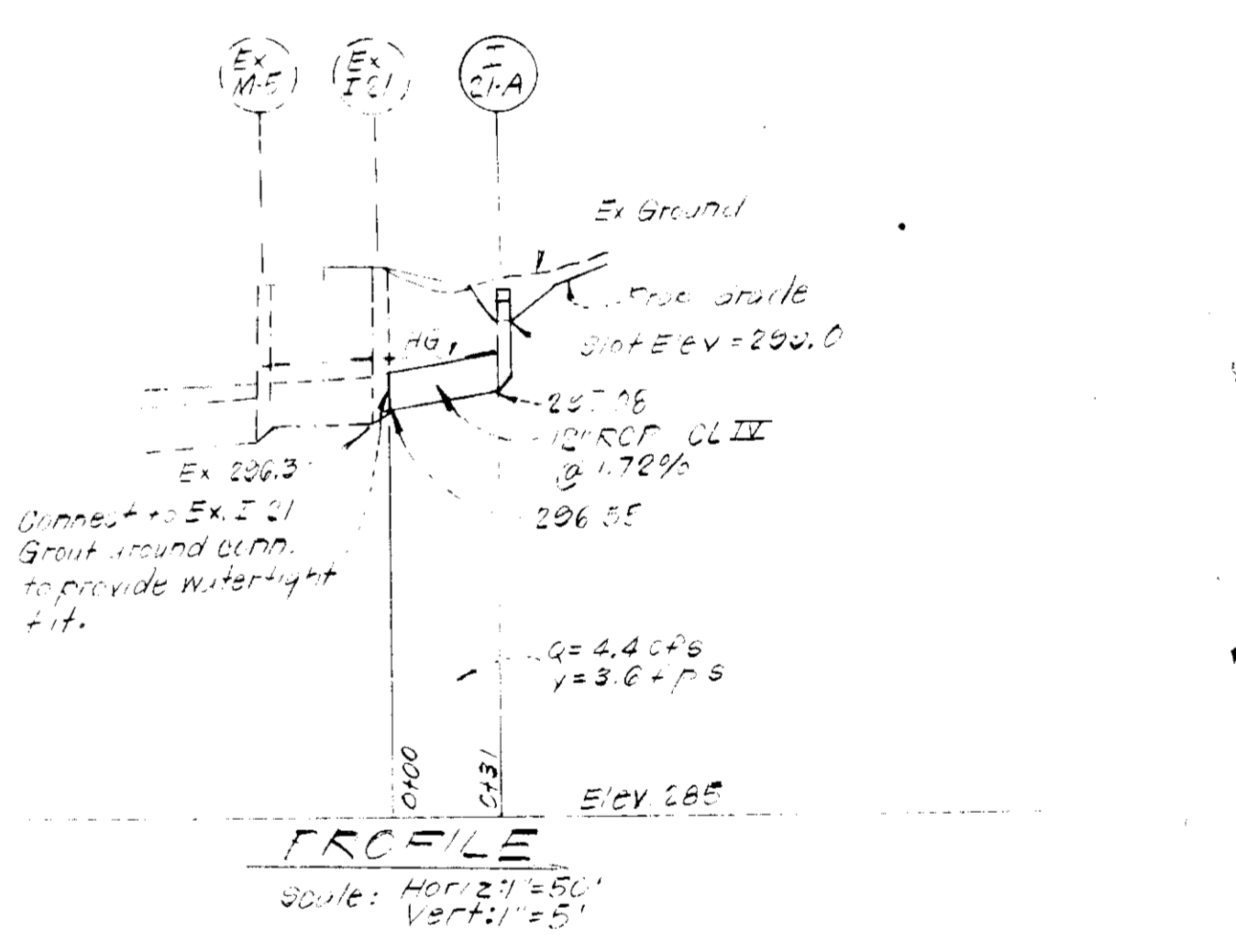
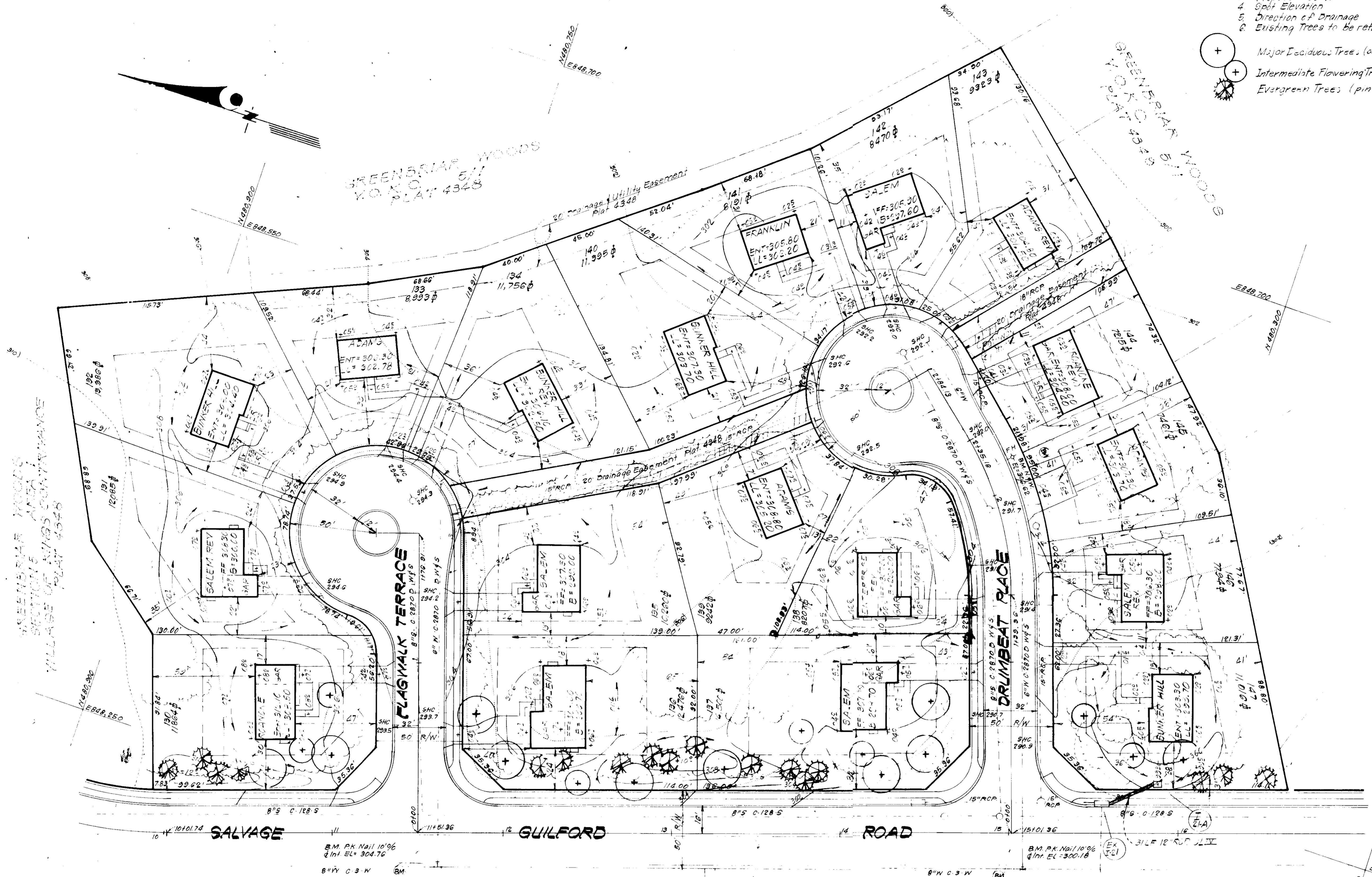


REVISIONS	DATE
1. Revision on Lot 131 from 7-25-80 to 7-25-80	7-25-80
2. Grading revised on Lot 133	8-2-81

- LEGEND:**
- 1. Contour Interval 2 FT
 - 2. Existing Contour 200
 - 3. Proposed Contour 300
 - 4. Spot Elevation -005
 - 5. Direction of Drainage
 - 6. Existing Trees to be retained
- Major Deciduous Trees (oaks, maples) 2 1/2" Cal. 12-14 ht.
 Intermediate Flowering Trees 2-2 1/2" Cal. 8-10 ht.
 Evergreen Trees (pines, spruce) 2 1/2" Cal. 6-8 ht.



- GENERAL NOTES:**
- The Land included in this plan is zoned: R5-C.
 - The Lots shown on this plan are covered by Final Development Plan Phase 174.
 - All coordinates are based on traverse controls for Columbia established by Maps 170, in 1968 by Pralom & Jaschke in 1968, which controls were tied to Maryland Bureau of Control Survey monuments and to U.S. Coast & Geodetic Survey monuments in the Columbia area.
 - The area covered in this submission is located on Tax Map # 42.
 - The total area included on this plan is 0.644 Acres.
 - All roadways are public & existing.
 - Any damage to county owned rights of way shall be corrected at the developer's expense.



STRUCTURE SCHEDULE

NO.	TYPE	IN. W.	IN. OUT.	TOP ELEV.	REMARKS
121A	12" R.O.P.	-	206.85	222.63	12" R.O.P. 4.11'

* Lots in South & East Sides Elev. 220.0

PIPE SCHEDULE

SIZE	TYPE	LENGTH
12"	R.O.P.	31 LF.

SURVEYOR'S CERTIFICATE

I hereby certify that the information contained herein is the same as shown on previously approved SDP 80-74C with the following exceptions:

- House Type and Grading has been revised on Lot 133.

I further certify that the sediment & erosion control measures, as previously approved will not be affected, the grading is substantially the same as originally approved, the building setbacks comply with Howard County Zoning and Subdivision Regulations, and the lot has the same geometric configuration as shown on the respective recorded subdivision plat.

2-2-83
 Date
 Donald B. Sackett
 Registered Land Surveyor
 Md. No. 6059

APPROVED
 DIVISION OF LAND DEVELOPMENT & PLANNING ADMINISTRATION
 HOWARD COUNTY, MARYLAND
 DATE 3-2-83
 JFD

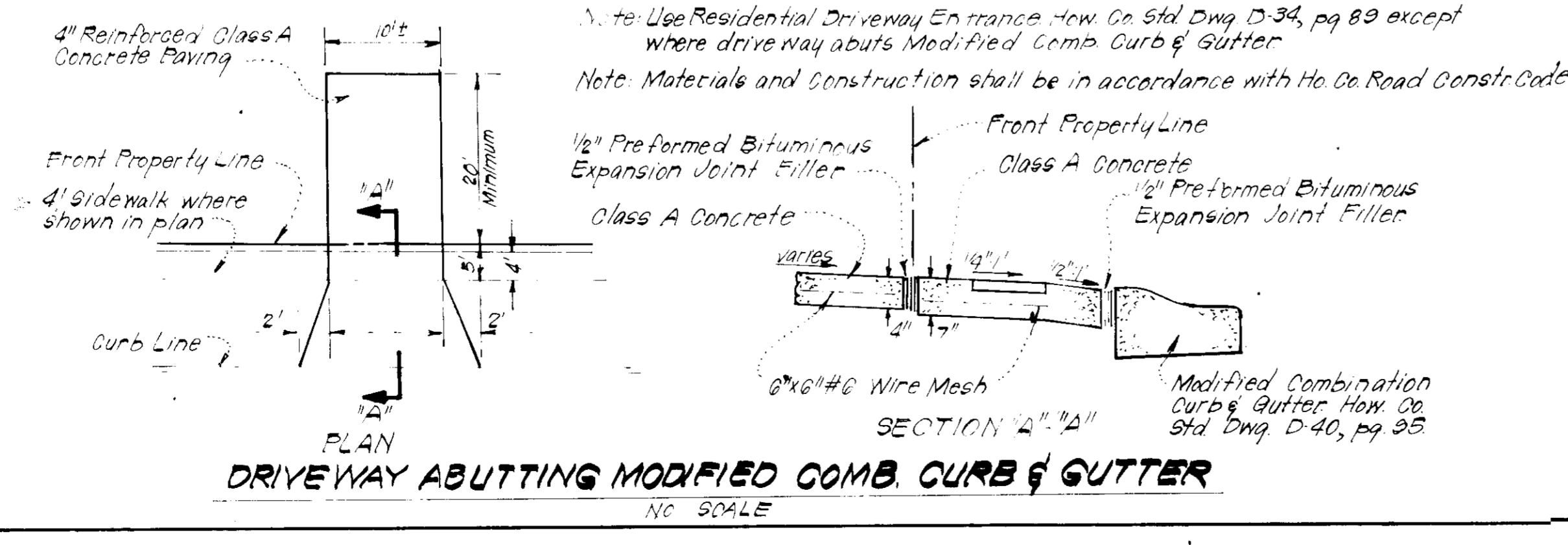
APPROVED FOR PUBLIC WATER AND PUBLIC SEWERAGE SYSTEMS,
 HOWARD COUNTY HEALTH DEPARTMENT
 COUNTY HEALTH OFFICER: *[Signature]* DATE 3-15-83

APPROVED HOWARD COUNTY OFFICE OF PLANNING & ZONING
 PLANNING DIRECTOR: *[Signature]* DATE 3-17-83

ACTIVE: *[Signature]* DATE 3-17-83
 CHIEF DIVISION OF LAND DEVELOPMENT & PLANNING

APPROVED FOR PUBLIC WATER AND PUBLIC SEWERAGE,
 STORM DRAINAGE SYSTEMS AND PUBLIC ROADS
 HOWARD COUNTY DEPARTMENT OF PUBLIC WORKS
 DIRECTOR: *[Signature]* DATE 3-11-83

[Signature] DATE 3-11-83
 CHIEF BUREAU OF ENGINEERING



PLAT REFERENCE: 4348

CLARK • FINEROCK & SACKETT
 ENGINEERS • PLANNERS • SURVEYORS
 11315 LOCKWOOD DRIVE SILVER SPRING, MARYLAND 20904 301-593-1001

DESIGNED: J.M.E.
 DRAWN: R.I.W.
 CHECKED: J.M.E.
 DATE: 2-2-83

REVISIONS:
 REVISED SITE DEVELOPMENT PLAN LOT 133

SCALE: 1"=30'
 DRAWING: 1 of 1
 JOB NO.: 79-093
 FILE NO.: 79-093-X

GREENBRIAR WOODS
 VILLAGE OF KINGS CONTRIVANCE
 SECTION 5 AREA
 6TH ELECTION DISTRICT
 HOWARD COUNTY, MARYLAND
 FOR THE RYLAND GROUPING (CO. DIVISION)
 Suits 200 v.o. v. Advice Bldg.
 Columbia, Md. 21043

SDP-83-94