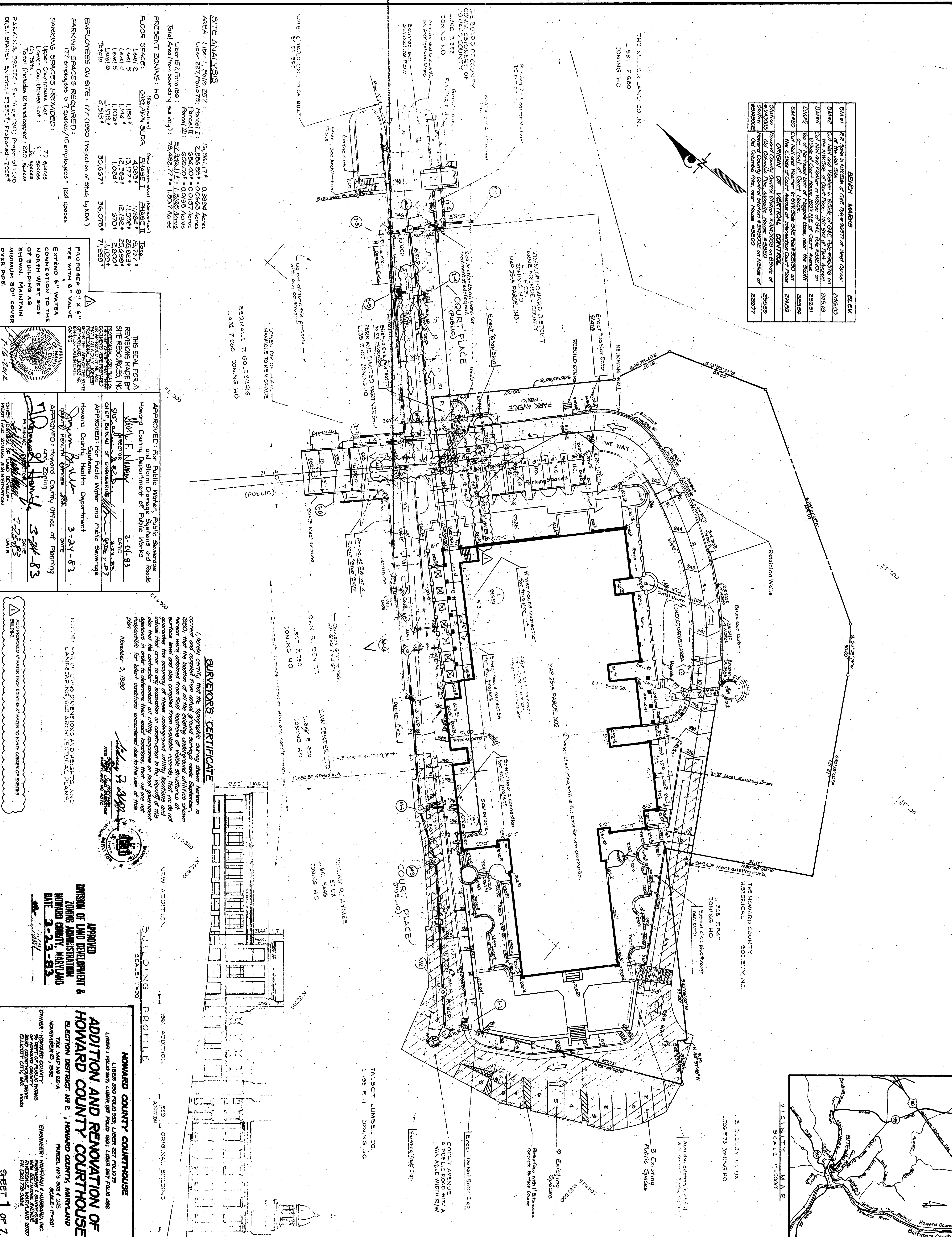


BENCH MARK	ELEV.	
B.M. #1	RR Spike in NW Corner of GLE Plot # 92077 at West Corner of the old site	246.63
B.M. #2	Corner of Howard County Courthouse in SE Corner of GLE Plot # 92077 on the NW Side of Court House 140' S.W. of Park Avenue	245.16
B.M. #3	Corner of Court House in NW Corner of GLE Plot # 92077 on the NW Side of Court House 140' S.W. of Park Avenue	236.51
B.M. #4	Top of Northern End of Flagpole Base, near the South Corner of Court House 140' S.W. of Park Avenue	239.84
B.M. #5	Corner of Court House in NW Corner of GLE Plot # 92077 on the NW Side of Court House 140' S.W. of Park Avenue	244.66

STATION	ORIGIN OF VERTICAL CONTROL	ELEVATION
Station 25+00.00	Howard County Control Station #3443003 on Side of Court House 140' S.W. of Park Avenue	255.89
Station 25+00.00	Howard County Control Station #3443002 on Side of Court House 140' S.W. of Park Avenue	255.89
Station 25+00.00	Howard County Control Station #3443001 on Side of Court House 140' S.W. of Park Avenue	255.89
Station 25+00.00	Howard County Control Station #3443000 on Side of Court House 140' S.W. of Park Avenue	255.89



SITE ANALYSIS
 AREA: Liber 257, Folio 257
 Parcel I: 1,936,174 sq. ft. 0.3894 Acres
 Parcel II: 2,086,824 sq. ft. 0.4783 Acres
 Parcel III: 6,020,000 sq. ft. 1.3819 Acres
 Parcel IV: 52,336,114 sq. ft. 12.0182 Acres
 Total Area from boundary survey: 78,482,774 sq. ft. 1.8017 Acres

PRESENT ZONING: HO
 (Residential) (New Construction) (Residential)
 FLOOR SPACE: PHASE I 4,083 sq. ft. PHASE II 16,767 sq. ft. Total 20,850 sq. ft.
 Level 2 1,154 sq. ft. Level 3 13,177 sq. ft. Level 4 1,124 sq. ft. Level 5 1,106 sq. ft. Level 6 1,084 sq. ft. Level 7 1,062 sq. ft. Level 8 1,040 sq. ft. Level 9 1,018 sq. ft. Level 10 996 sq. ft. Level 11 974 sq. ft. Level 12 952 sq. ft. Level 13 930 sq. ft. Level 14 908 sq. ft. Level 15 886 sq. ft. Level 16 864 sq. ft. Level 17 842 sq. ft. Level 18 820 sq. ft. Level 19 798 sq. ft. Level 20 776 sq. ft. Level 21 754 sq. ft. Level 22 732 sq. ft. Level 23 710 sq. ft. Level 24 688 sq. ft. Level 25 666 sq. ft. Level 26 644 sq. ft. Level 27 622 sq. ft. Level 28 600 sq. ft. Level 29 578 sq. ft. Level 30 556 sq. ft. Level 31 534 sq. ft. Level 32 512 sq. ft. Level 33 490 sq. ft. Level 34 468 sq. ft. Level 35 446 sq. ft. Level 36 424 sq. ft. Level 37 402 sq. ft. Level 38 380 sq. ft. Level 39 358 sq. ft. Level 40 336 sq. ft. Level 41 314 sq. ft. Level 42 292 sq. ft. Level 43 270 sq. ft. Level 44 248 sq. ft. Level 45 226 sq. ft. Level 46 204 sq. ft. Level 47 182 sq. ft. Level 48 160 sq. ft. Level 49 138 sq. ft. Level 50 116 sq. ft. Level 51 94 sq. ft. Level 52 72 sq. ft. Level 53 50 sq. ft. Level 54 28 sq. ft. Level 55 6 sq. ft.

EMPLOYEES ON SITE: 177 (1990 Projection of Study by KDA)
PARKING SPACES PROVIDED: 77 spaces
 Upper Courthouse Lot: 6 spaces
 Lower Courthouse Lot: 6 spaces
 On Site: 65 spaces
 Total (Includes 12 handicapped): 208 spaces
PARKING SPACES: Existing = 200; Proposed = 700
ORIENT SPACES: Existing = 2795; Proposed = 7225

REVISIONS MADE BY SITE RESOURCES, INC.
 THIS SEAL FOR REVISIONS MADE BY SITE RESOURCES, INC. IS VALID FOR THE STATE OF MARYLAND. THE SEAL IS VALID FOR THE STATE OF MARYLAND. THE SEAL IS VALID FOR THE STATE OF MARYLAND.

APPROVED: For Public Water, Public Sewerage, and Storm Drainage Systems and Roads
 Howard County Department of Public Works
 Director: [Signature]
 DATE: 3-21-83

APPROVED: For Public Water and Public Sewerage Systems
 Howard County Health Department
 Director: [Signature]
 DATE: 3-21-83

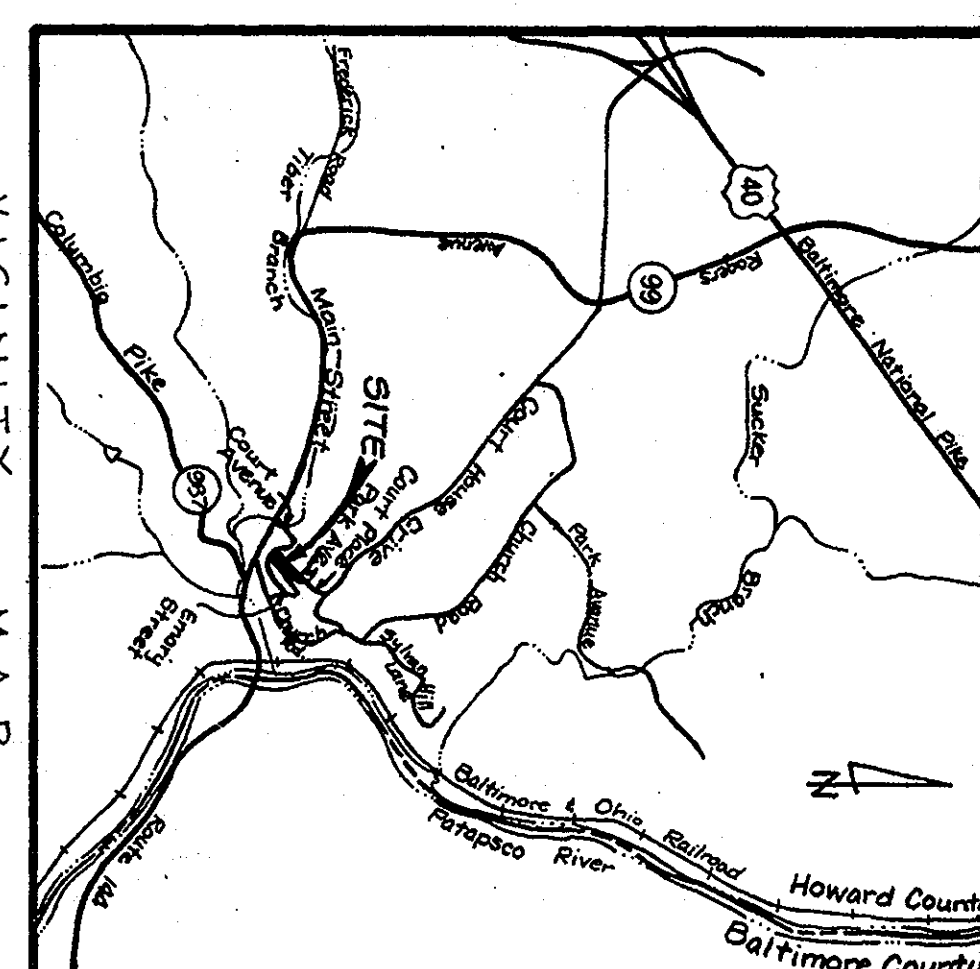
APPROVED: Howard County Office of Planning and Zoning
 Director: [Signature]
 DATE: 3-21-83

SURVEYOR'S CERTIFICATE
 I hereby certify that the topographic survey shown hereon is correct and compiled from actual ground surveying operations performed by me or under my direct supervision and that the location of all the existing underground utilities shown hereon were obtained from field locations of visible structures or surface level and also compiled from available records; that we do not guarantee the accuracy of these underground utility locations and plan that the contractor or construction or local government agencies in order to determine their exact locations; that we are not responsible for later conditions encountered due to the use of this plan.
 November 3, 1980
 [Signature]
 Surveyor

BUILDING PROFILE
 SCALE: 1"=20'
 1967 ADDITION
 NEW ADDITION
 ORIGINAL BUILDINGS

APPROVED
 DIVISION OF LAND DEVELOPMENT & ZONING ADMINISTRATION
 HOWARD COUNTY, MARYLAND
 DATE: 3-23-83

HOWARD COUNTY COURTHOUSE
 ADDITION AND RENOVATION OF
 HOWARD COUNTY COURTHOUSE
 LIBER 250 FOLIO 257 PARCELS 1, 2, 3, 4, 5, 6, 7, 8, 9, 10, 11, 12, 13, 14, 15, 16, 17, 18, 19, 20, 21, 22, 23, 24, 25, 26, 27, 28, 29, 30, 31, 32, 33, 34, 35, 36, 37, 38, 39, 40, 41, 42, 43, 44, 45, 46, 47, 48, 49, 50, 51, 52, 53, 54, 55, 56, 57, 58, 59, 60, 61, 62, 63, 64, 65, 66, 67, 68, 69, 70, 71, 72, 73, 74, 75, 76, 77, 78, 79, 80, 81, 82, 83, 84, 85, 86, 87, 88, 89, 90, 91, 92, 93, 94, 95, 96, 97, 98, 99, 100



HOWARD COUNTY COURTHOUSE RENOVATION & ADDITION
 Ellicott City, Maryland
 Capital Project C-6-0122

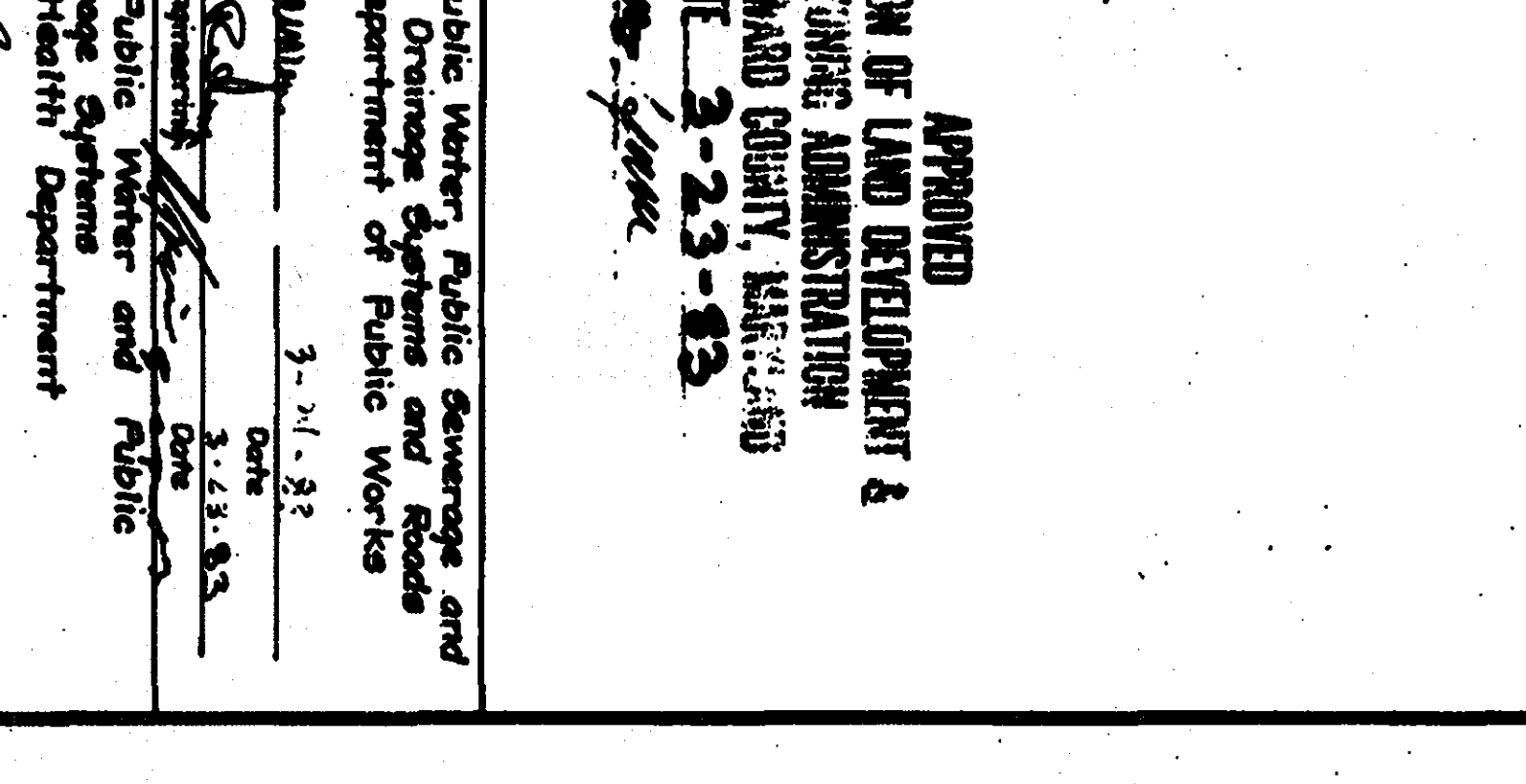
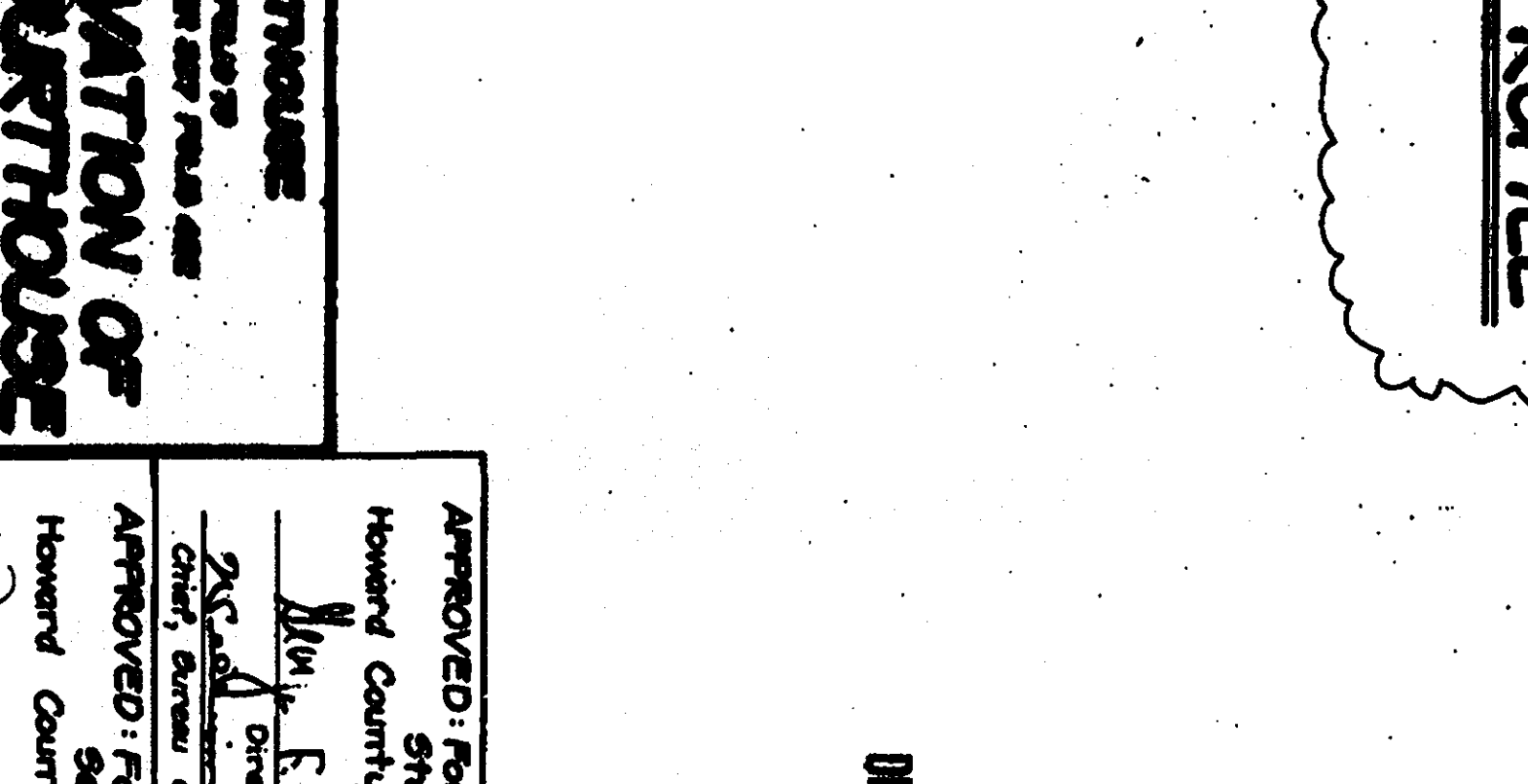
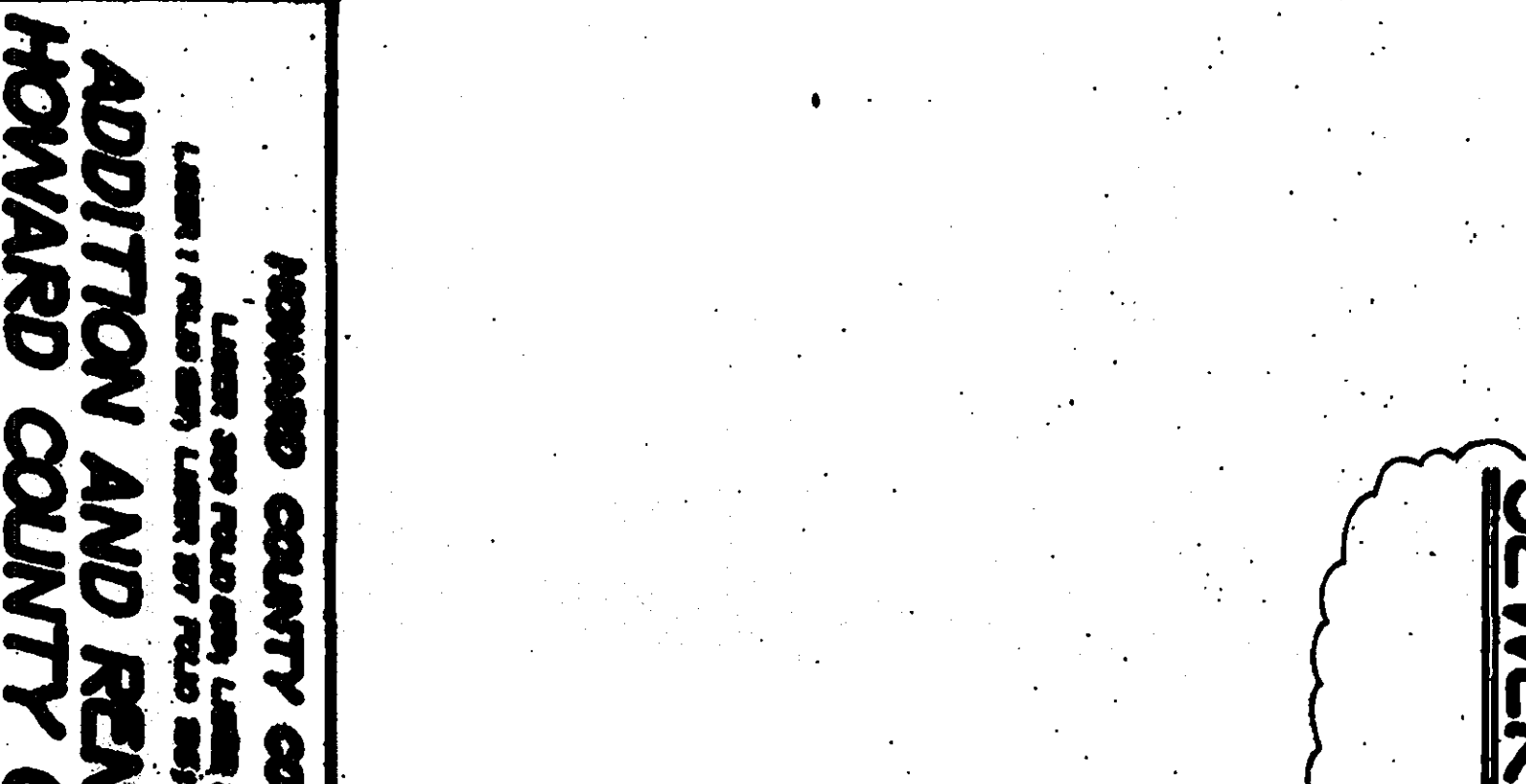
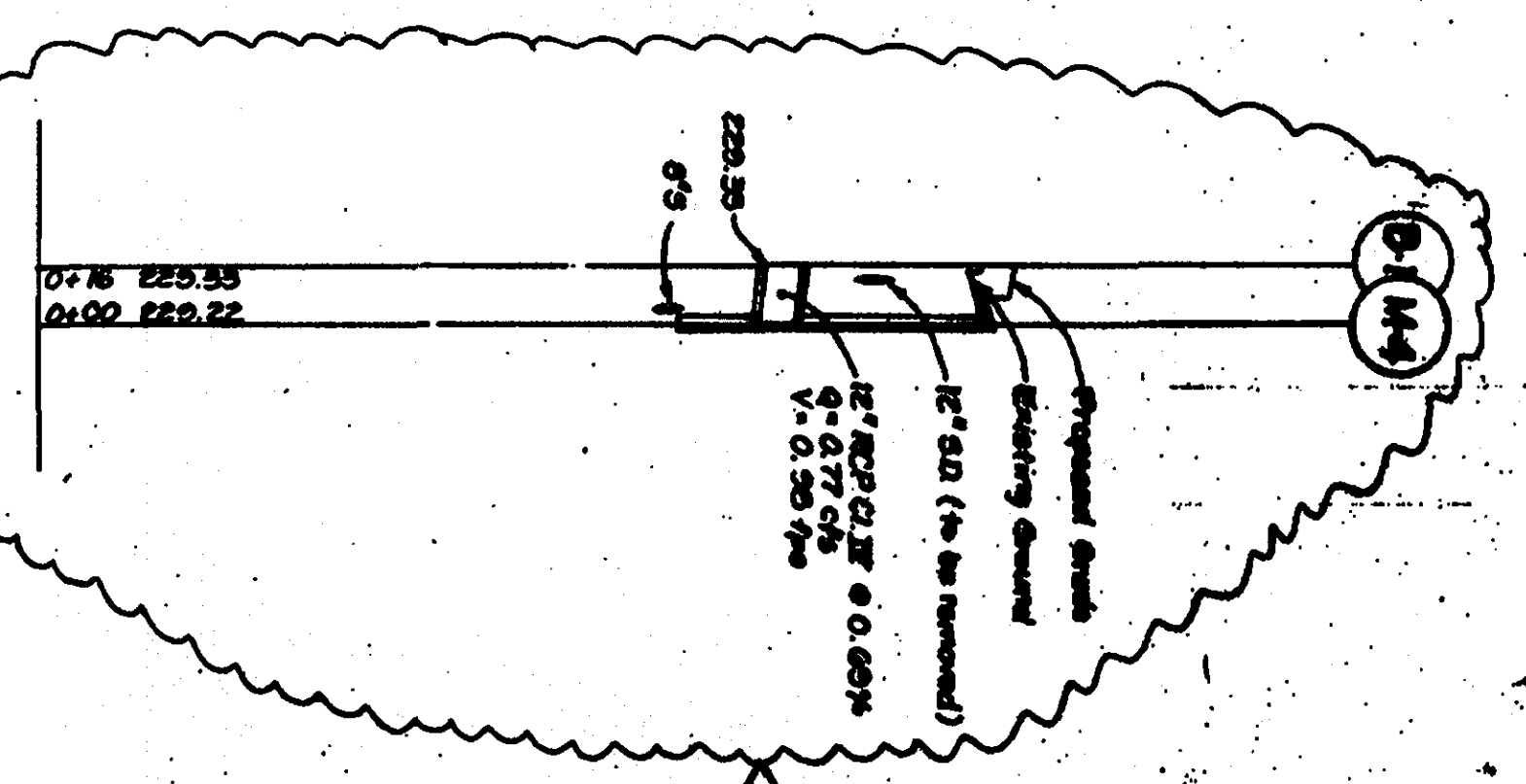
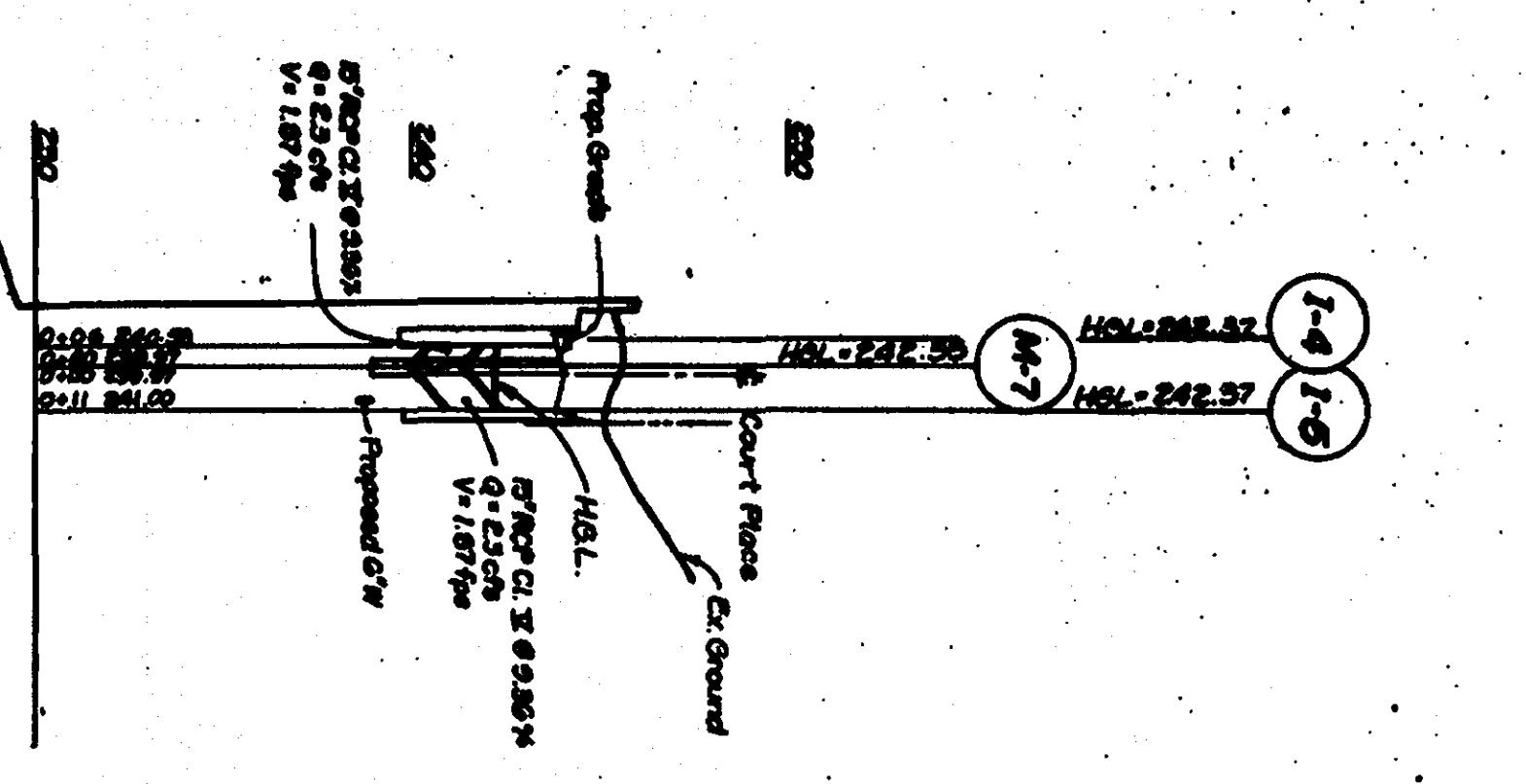
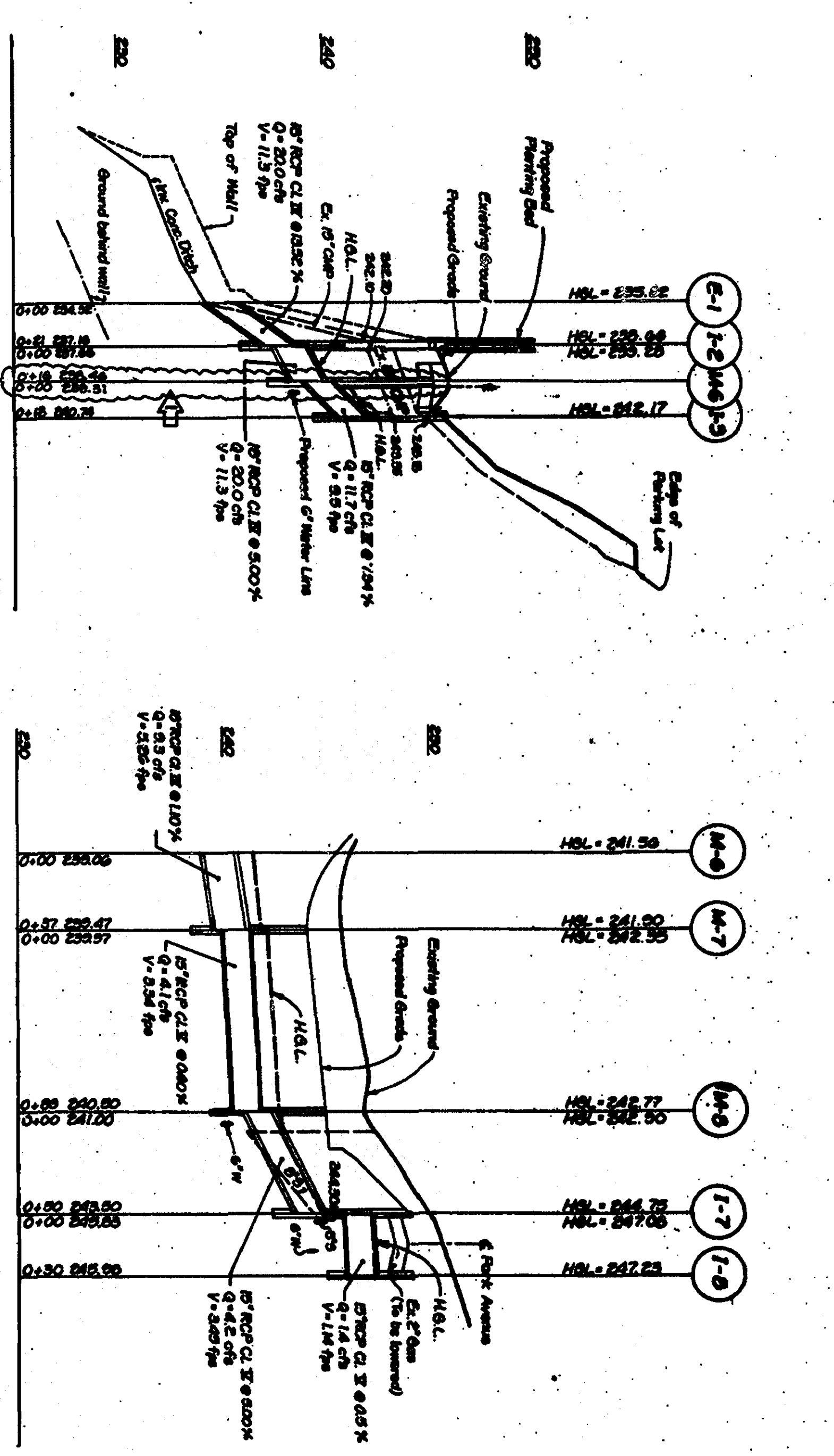
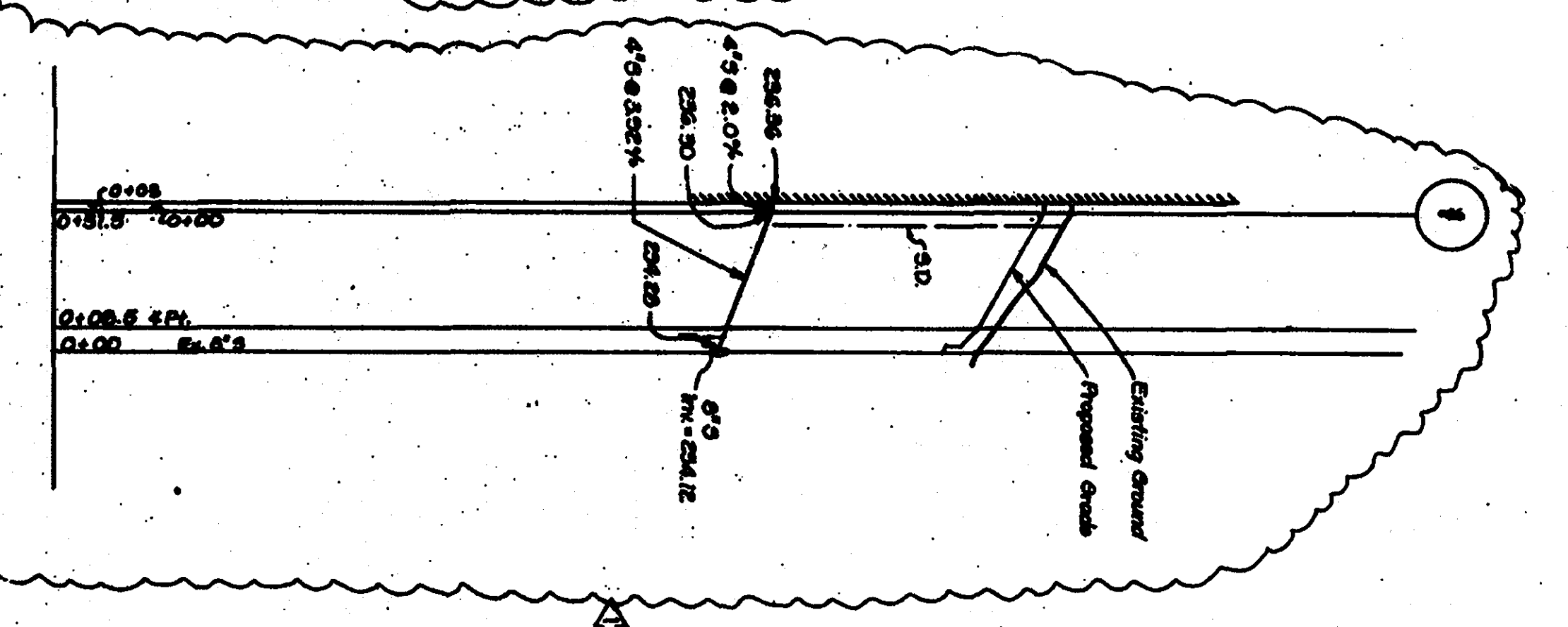
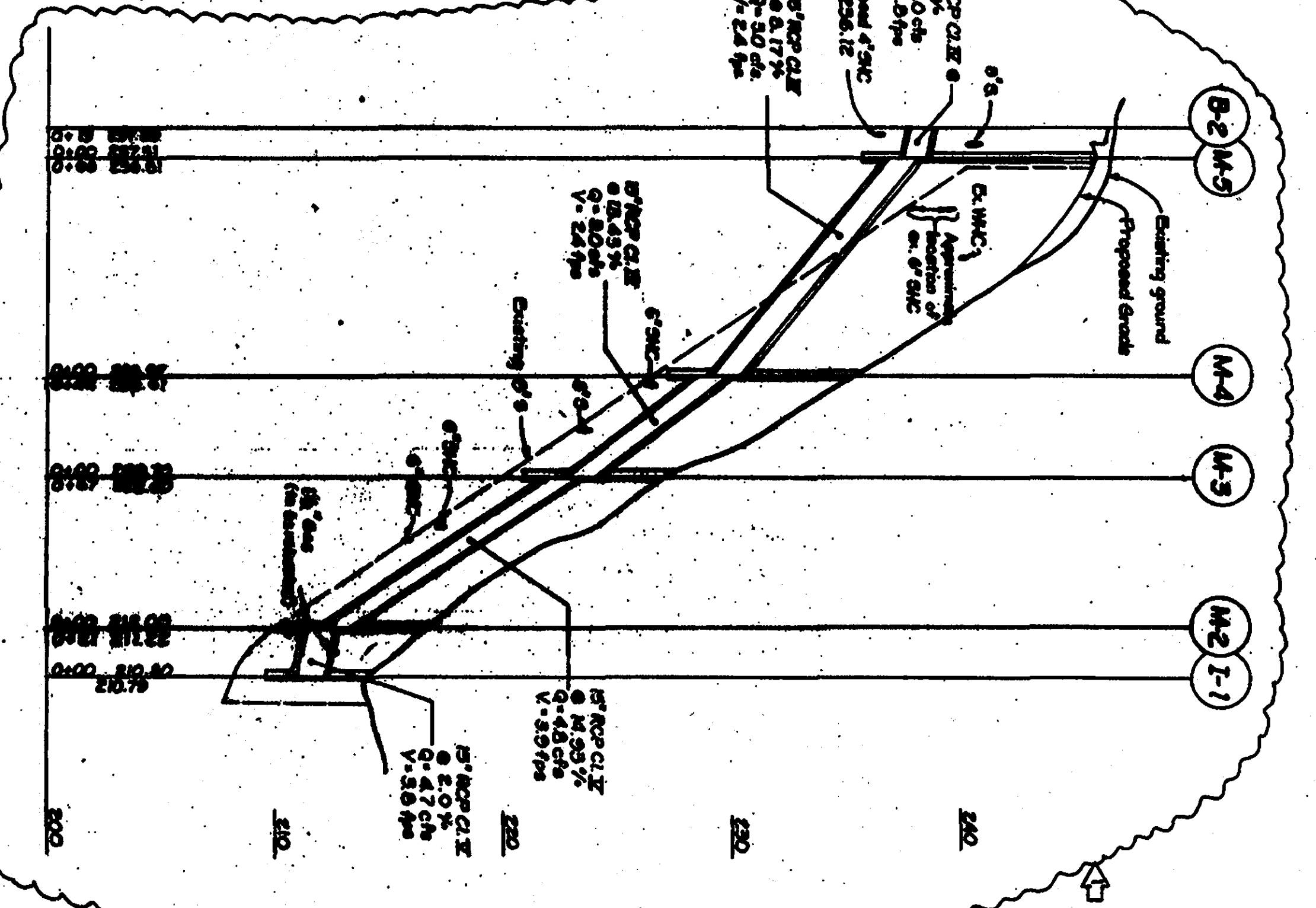
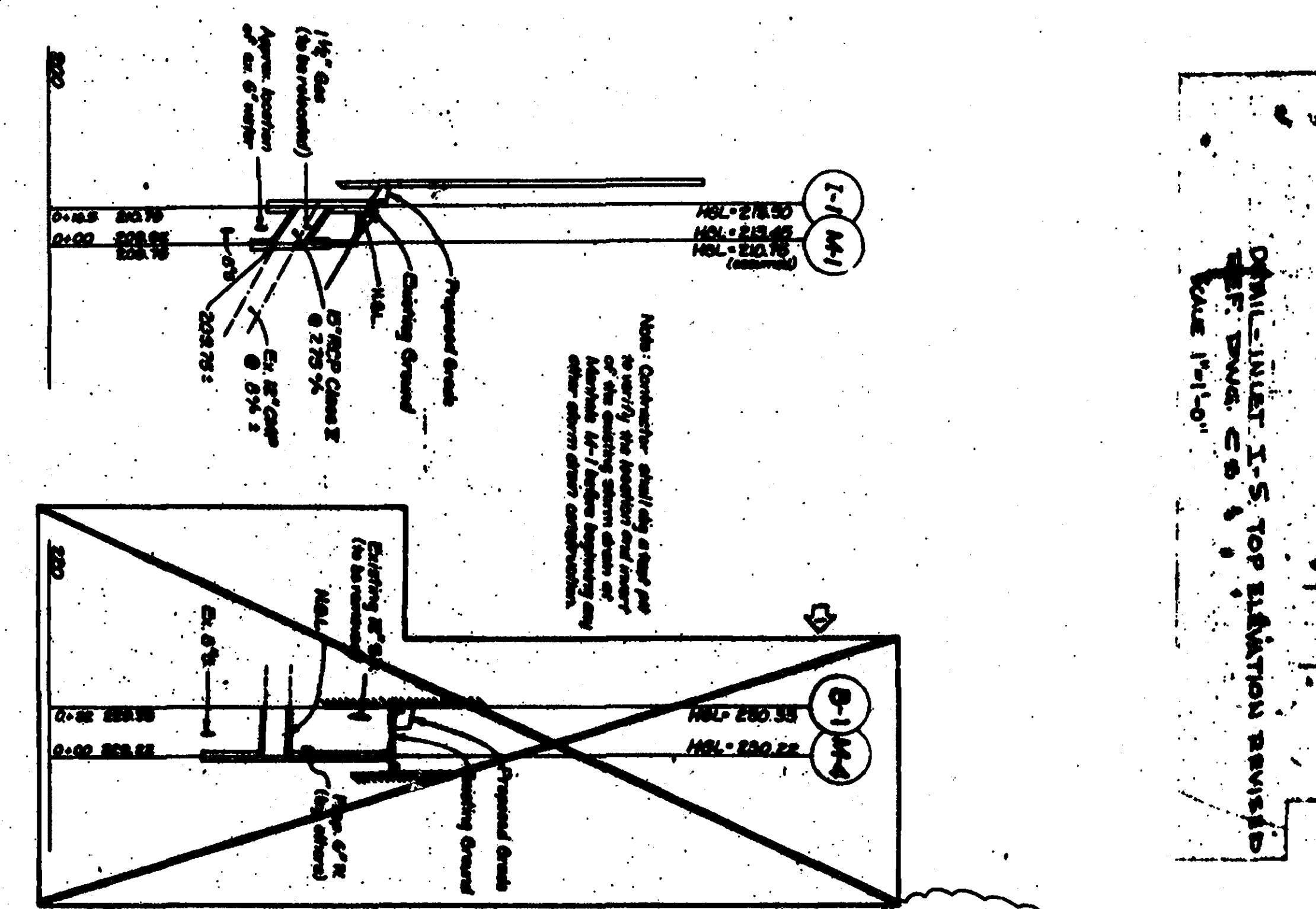
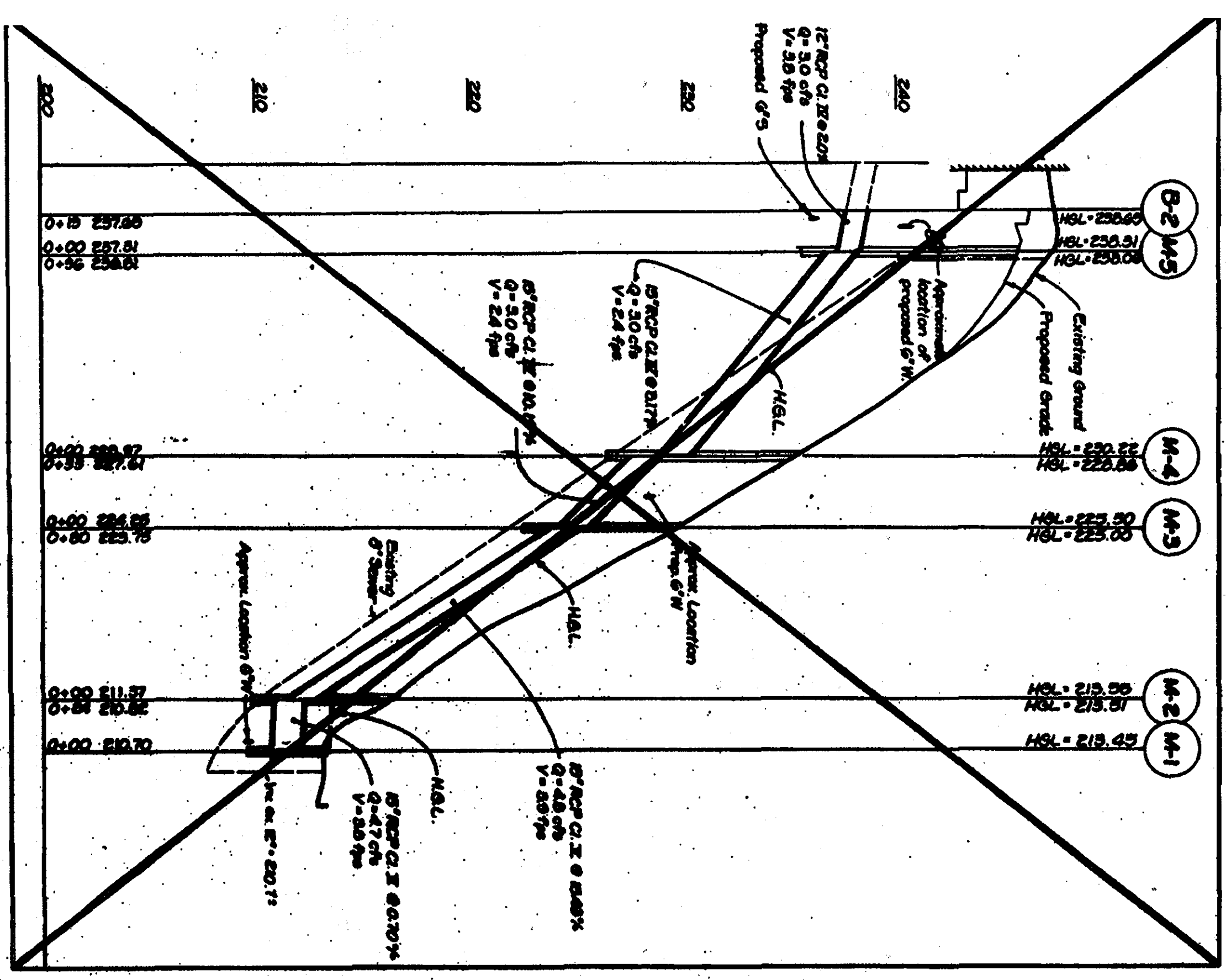
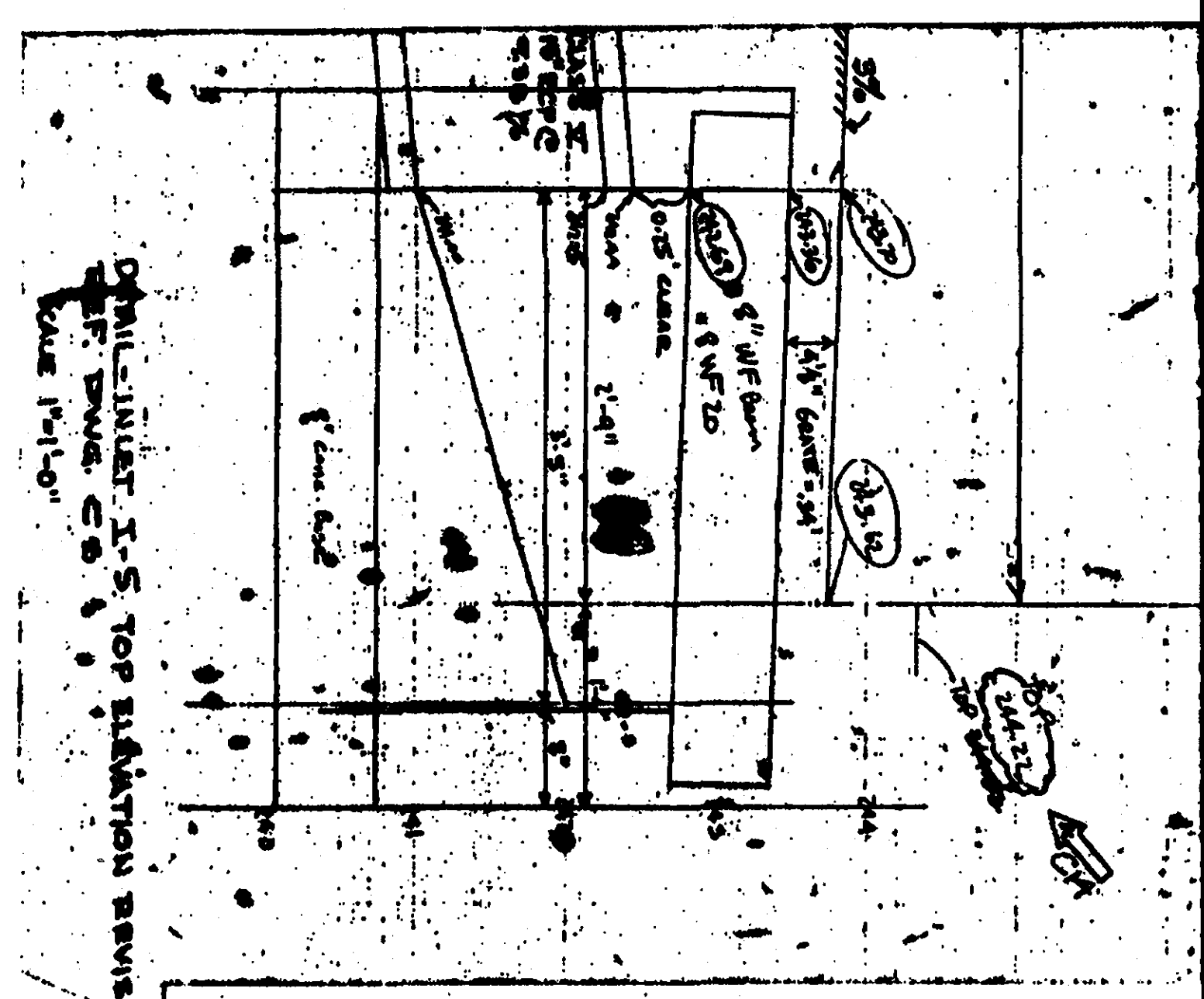
KDA
 Planners Architects Designers
 808 Westgate Plaza
 P.O. Box 14280
 Ellicott City, MD 21030

DATE: 3-31-85
 Revised

SITE GRADING PLAN

C2
 SHEET 1 OF 7

NO.	TYPE	LOCATION	IN. DI.	LENGTH	REMARKS
M-1	18" V.C. 40' S.E.	See plan and profile	20.00	20.00	18" V.C. 40' S.E.
M-2	18" V.C. 40' S.E.	See plan and profile	20.00	20.00	18" V.C. 40' S.E.
M-3	18" V.C. 40' S.E.	See plan and profile	20.00	20.00	18" V.C. 40' S.E.
M-4	18" V.C. 40' S.E.	See plan and profile	20.00	20.00	18" V.C. 40' S.E.
M-5	18" V.C. 40' S.E.	See plan and profile	20.00	20.00	18" V.C. 40' S.E.
M-6	18" V.C. 40' S.E.	See plan and profile	20.00	20.00	18" V.C. 40' S.E.
M-7	18" V.C. 40' S.E.	See plan and profile	20.00	20.00	18" V.C. 40' S.E.
M-8	18" V.C. 40' S.E.	See plan and profile	20.00	20.00	18" V.C. 40' S.E.
M-9	18" V.C. 40' S.E.	See plan and profile	20.00	20.00	18" V.C. 40' S.E.
M-10	18" V.C. 40' S.E.	See plan and profile	20.00	20.00	18" V.C. 40' S.E.
M-11	18" V.C. 40' S.E.	See plan and profile	20.00	20.00	18" V.C. 40' S.E.
M-12	18" V.C. 40' S.E.	See plan and profile	20.00	20.00	18" V.C. 40' S.E.
M-13	18" V.C. 40' S.E.	See plan and profile	20.00	20.00	18" V.C. 40' S.E.
M-14	18" V.C. 40' S.E.	See plan and profile	20.00	20.00	18" V.C. 40' S.E.
M-15	18" V.C. 40' S.E.	See plan and profile	20.00	20.00	18" V.C. 40' S.E.
M-16	18" V.C. 40' S.E.	See plan and profile	20.00	20.00	18" V.C. 40' S.E.
M-17	18" V.C. 40' S.E.	See plan and profile	20.00	20.00	18" V.C. 40' S.E.
M-18	18" V.C. 40' S.E.	See plan and profile	20.00	20.00	18" V.C. 40' S.E.
M-19	18" V.C. 40' S.E.	See plan and profile	20.00	20.00	18" V.C. 40' S.E.
M-20	18" V.C. 40' S.E.	See plan and profile	20.00	20.00	18" V.C. 40' S.E.



STORM DRAIN PROFILES

SCALE: HORIZONTAL 1"=30'
VERTICAL 1"=5'

Revised 4-15-83

HOWARD COUNTY COURTHOUSE
 ADDITION AND RENOVATION OF
 HOWARD COUNTY COURTHOUSE

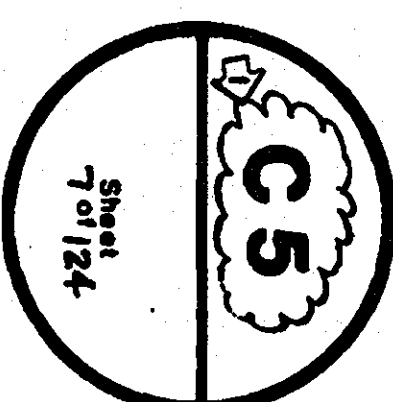
DESIGNED BY: HOWARD COUNTY
 ENGINEER: HOWARD COUNTY
 PLANNING: HOWARD COUNTY
 ARCHITECT: HOWARD COUNTY
 CONSULTING: HOWARD COUNTY

APPROVED: For Public Works, Public Sewerage and Storm Drainage Systems and Roads
 Howard County Department of Public Works

APPROVED: For Public Health and Public
 Howard County Health Department

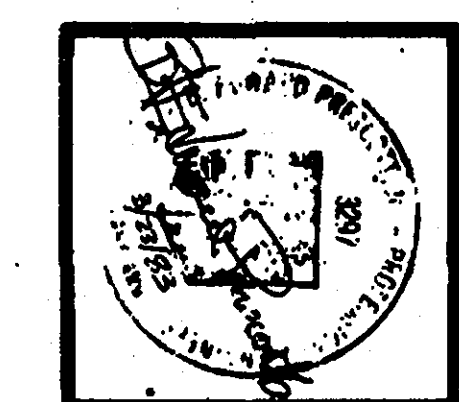
DATE: 3-24-83

APPROVED
 DIVISION OF LAND DEVELOPMENT &
 ZONING ADMINISTRATION
 HOWARD COUNTY, MARYLAND
 DATE: 3-23-83



STORM DRAIN WATER SEWER PROFILES

Scale 3'-31.61'
 Vertical 1"=5'-0.00'
 Horizontal 1"=30'-0.00'

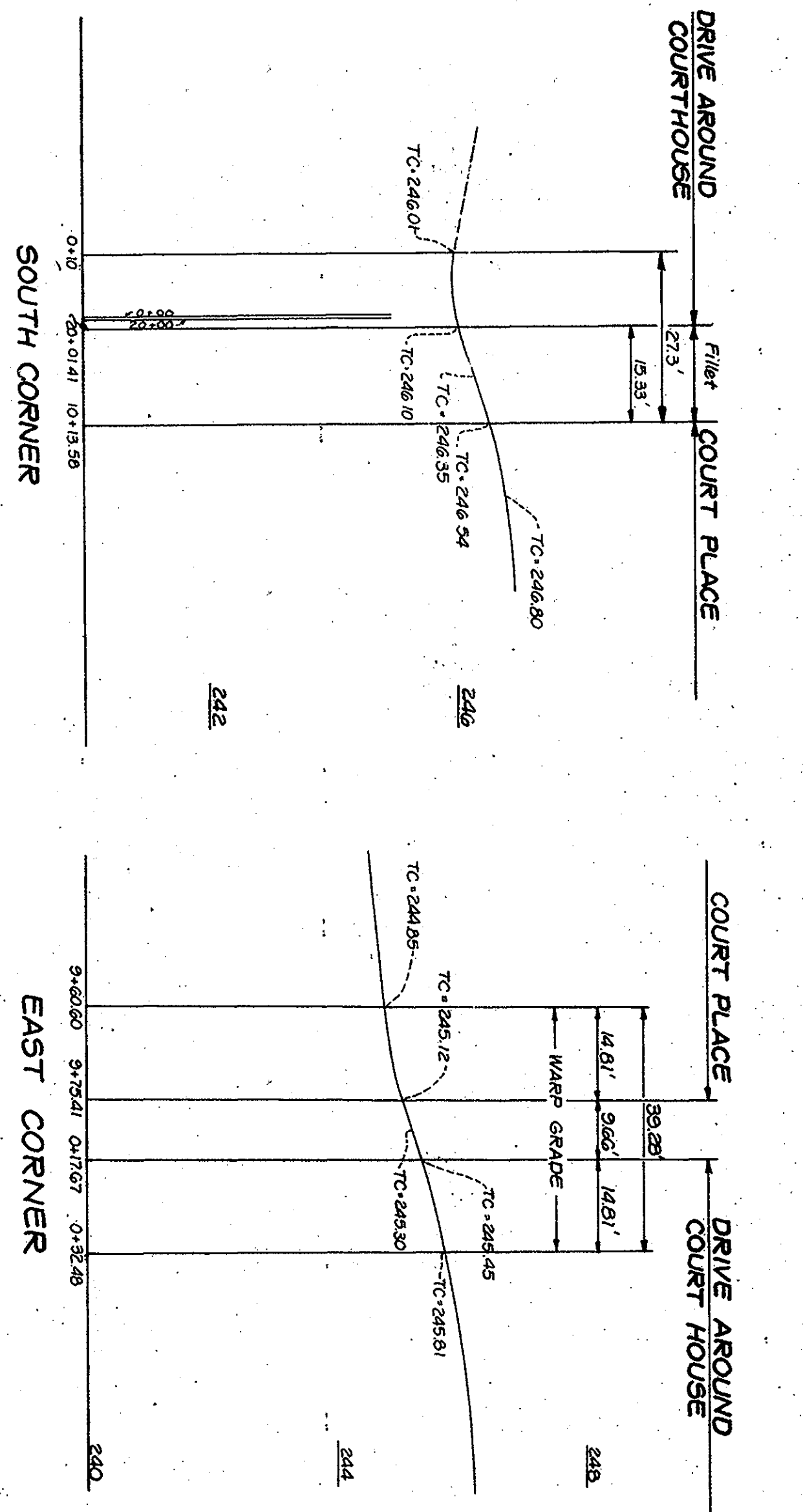
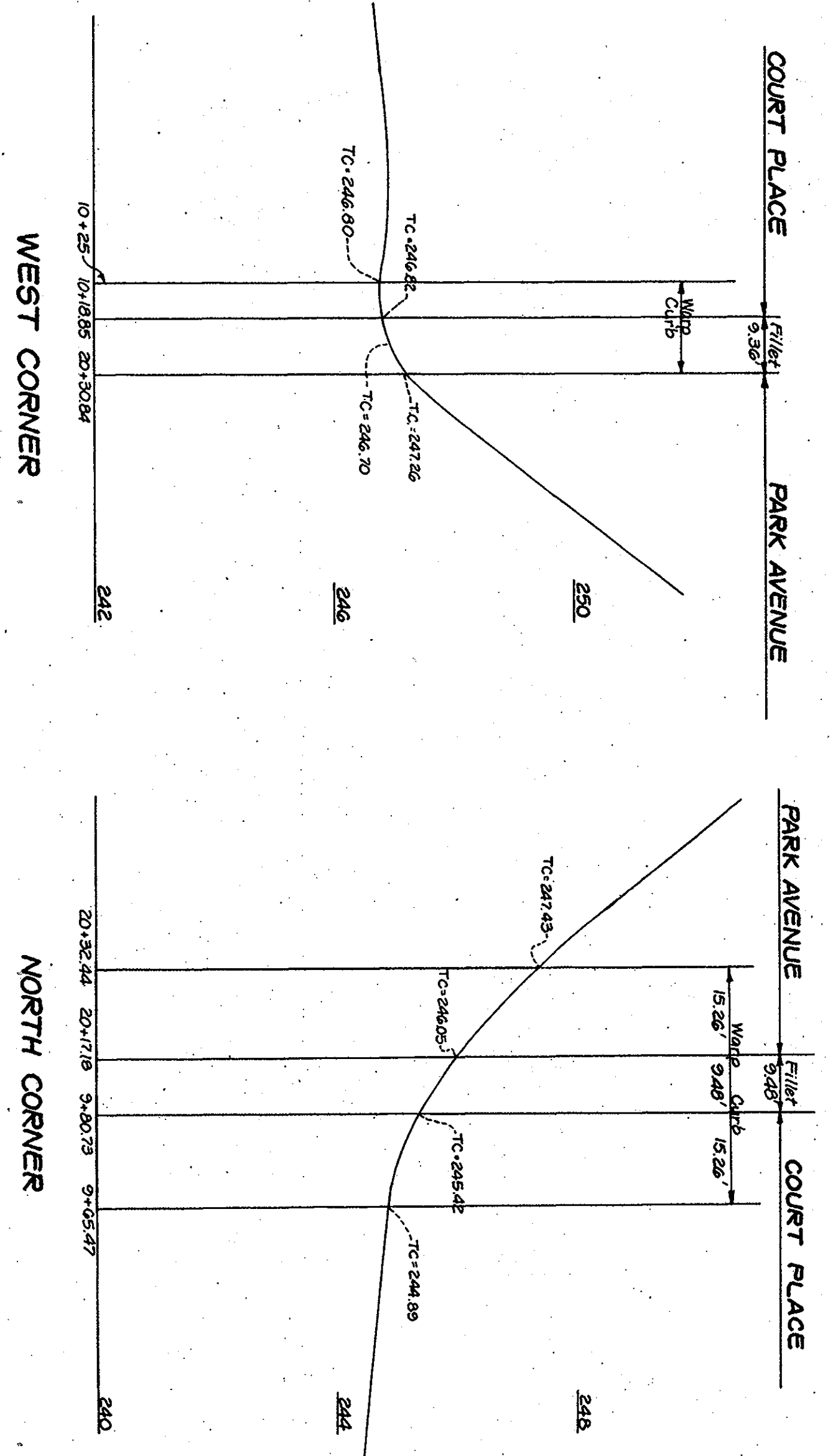


HOWARD COUNTY COURTHOUSE RENOVATION & ADDITION
 Ellicott City, Maryland

Capital Project C-6-0122

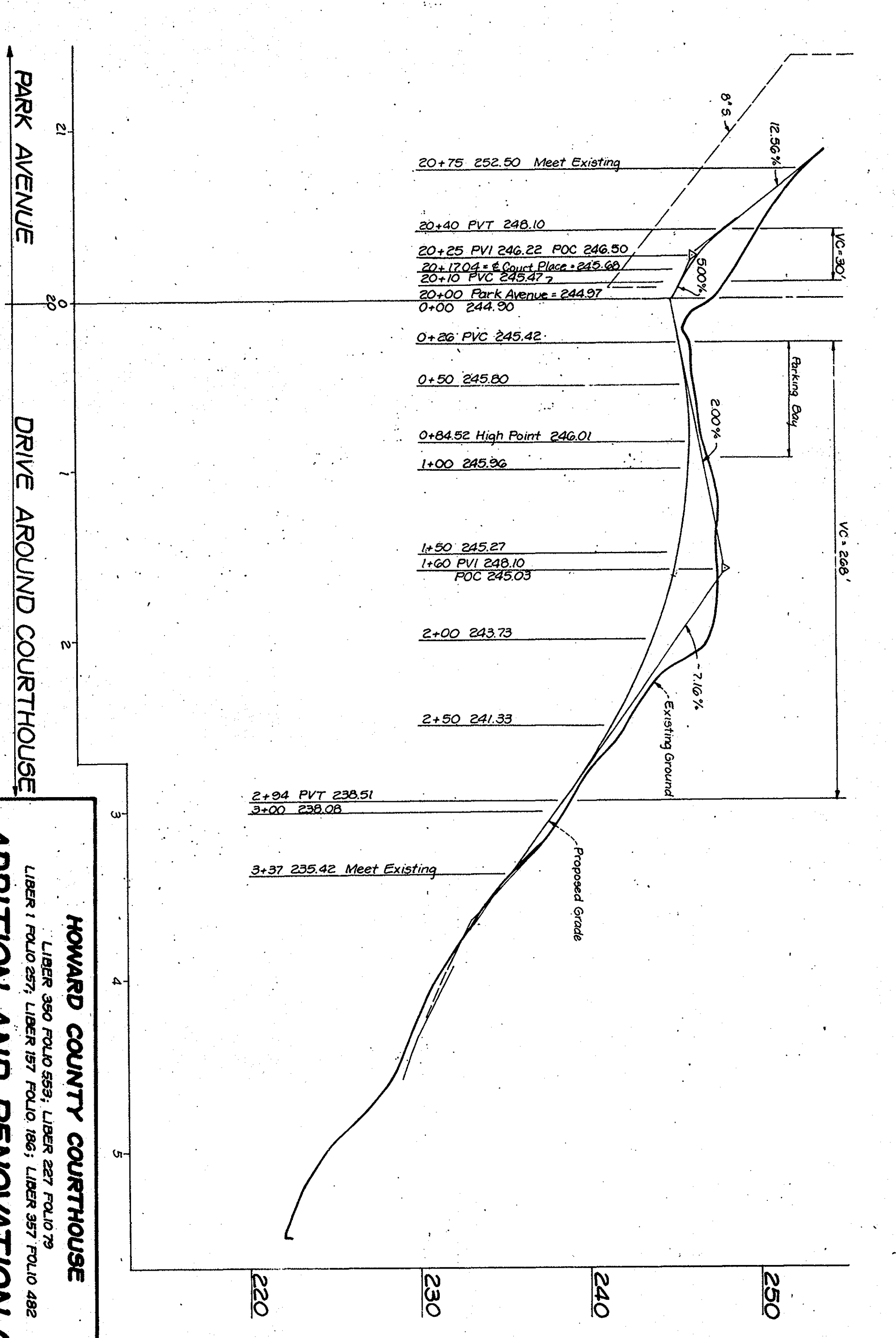
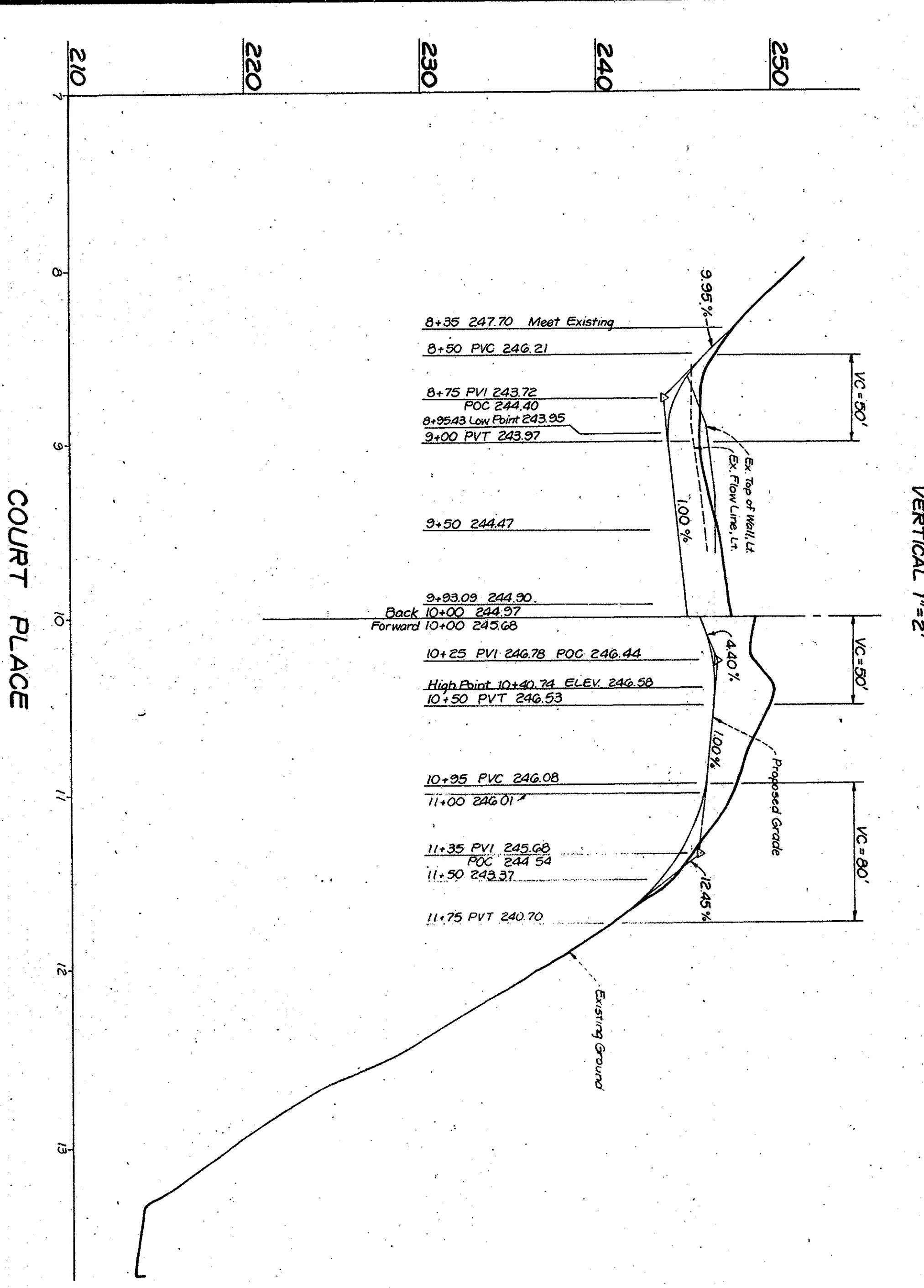
Partners Architects Designers
 808 Westwood Plaza
 Ellicott City, MD 21030





FILLET PROFILES

SCALE: HORIZONTAL 1"=20'
VERTICAL 1"=2'



STREET PROFILES

SCALE: HORIZONTAL 1"=50'
VERTICAL 1"=5'

HOWARD COUNTY COURTHOUSE
LIBER 380 FOLIO 583; LIBER 287 FOLIO 79
LIBER 1 FOLIO 571; LIBER 157 FOLIO 185; LIBER 357 FOLIO 482

ADDITION AND RENOVATION OF HOWARD COUNTY COURTHOUSE
ELECTION DISTRICT NO. 2, HOWARD COUNTY, MARYLAND

TRAC MAP NO. 85-4
NOVEMBER 23, 1982

OWNER: HOWARD COUNTY
56 DEPT. OF PUBLIC WORKS
3620 CAMP HOUSE DRIVE
ELICOTT CITY, MD 21043

ENGINEER: HOFFMAN & HUBBARD, INC.
ENGINEERS & SURVEYORS
3620 CAMP HOUSE DRIVE
ELICOTT CITY, MD 21043
PH. (301) 759-9494

SCALE: 1"=20'

SHEET 4 OF 7

APPROVED: For Public Water, Public Sewerage and Storm Drainage Systems and Roads
Howard County Department of Public Works

By: *[Signature]*
Date: 3-21-83

APPROVED: For Public Water and Public Sewerage Systems
Howard County Health Department

By: *[Signature]*
Date: 3-24-83

APPROVED: Howard County Office of Planning and Zoning

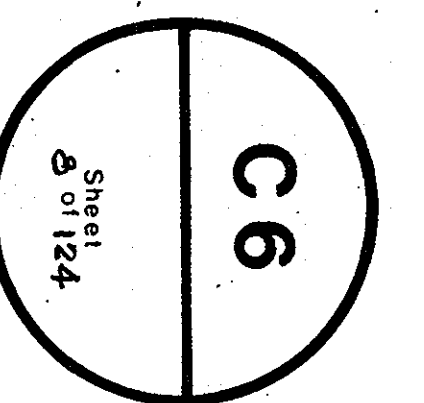
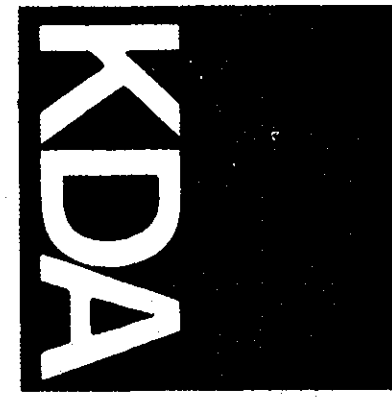
By: *[Signature]*
Date: 3-24-83

APPROVED: Howard County Department of Public Works

By: *[Signature]*
Date: 3-23-83

HOWARD COUNTY COURTHOUSE RENOVATION & ADDITION
Ellicott City, Maryland

Partners Architects Designers
1603 Westport Plaza
Ft. Belvoir, VA 22030
PH. (703) 431-4250

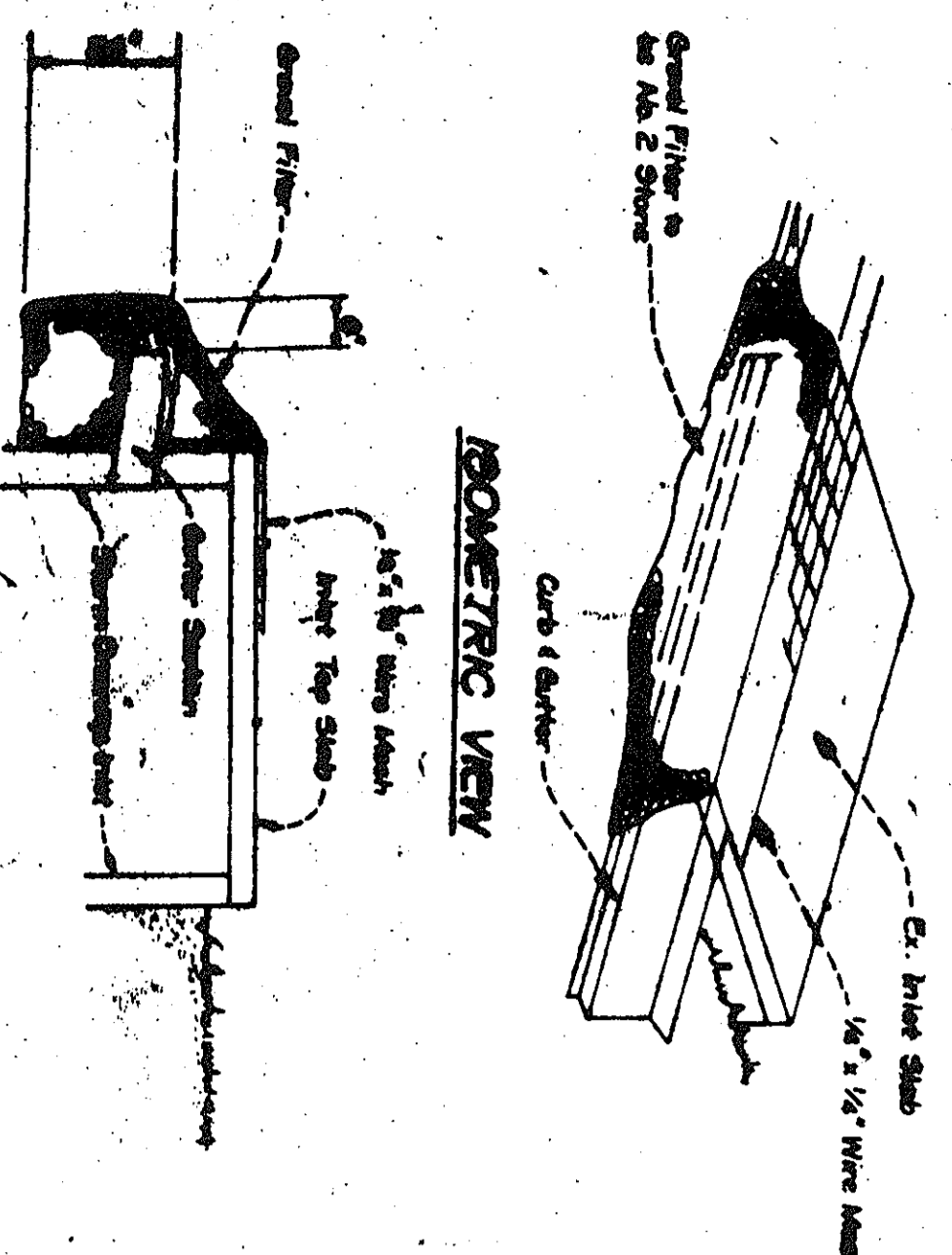


STREET AND FILLET PROFILES

Date: 3-21-83
Revised:

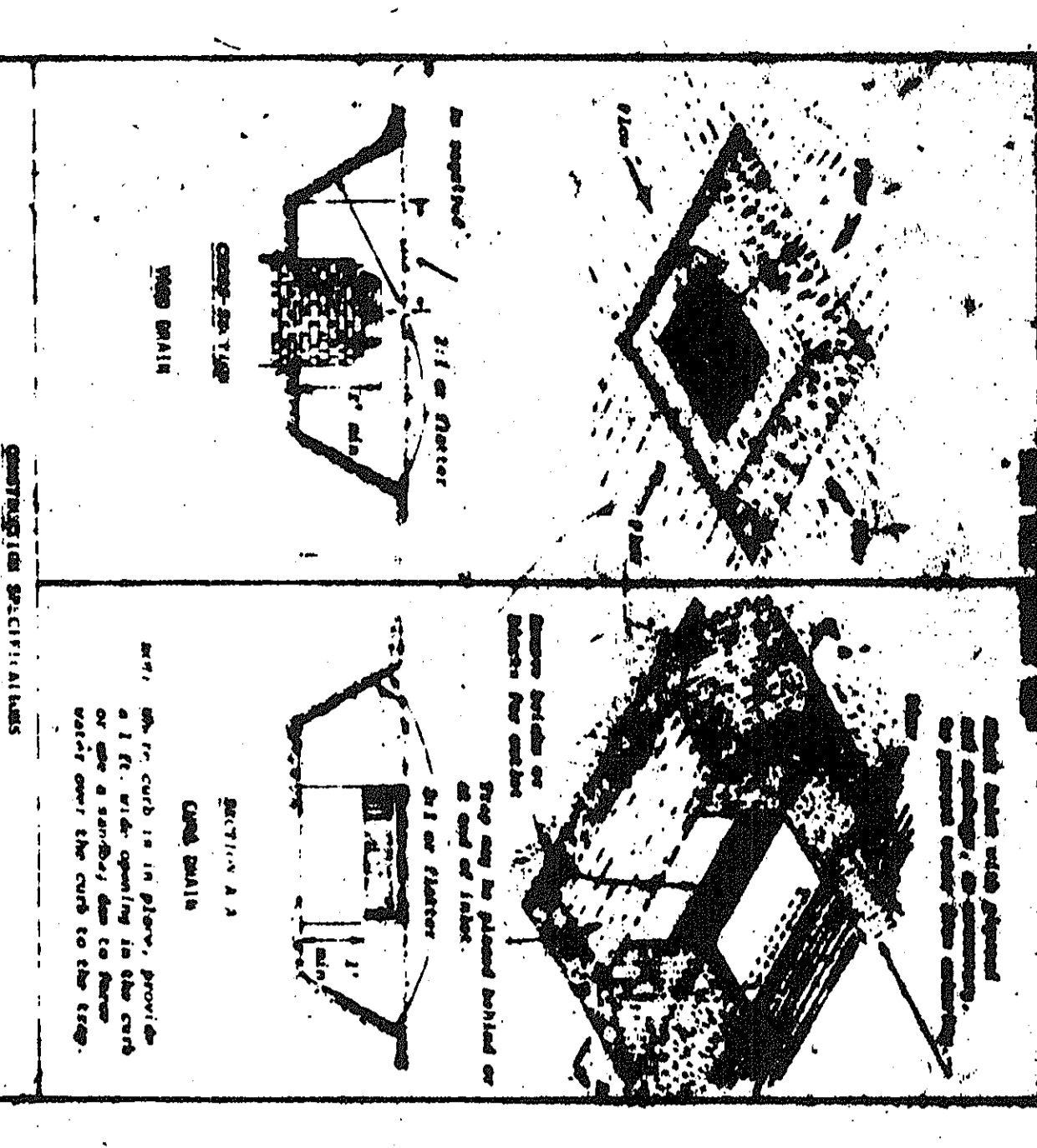
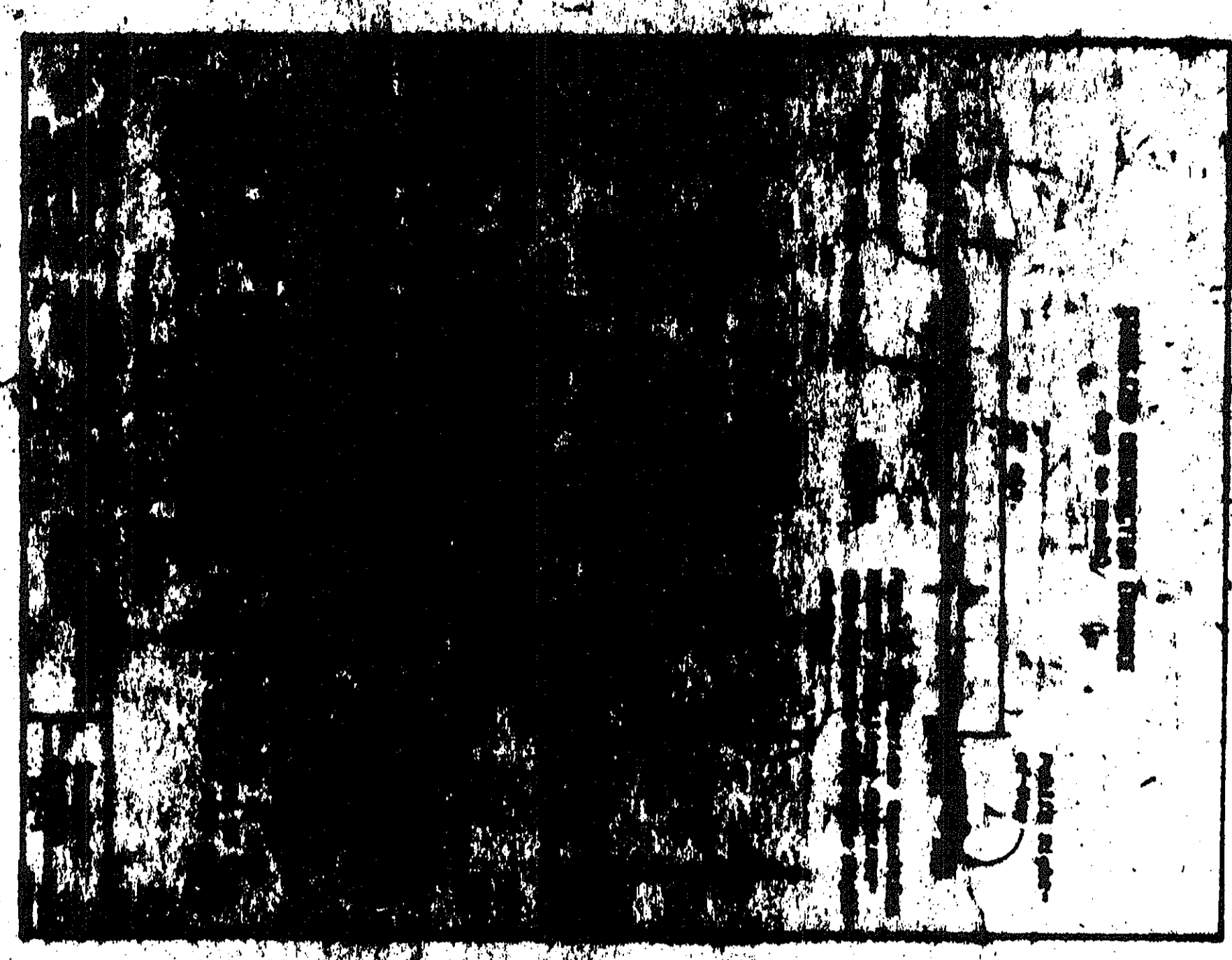


Capital Project C-6-0122



STONE FILTER INLET PROTECTION
No Stone

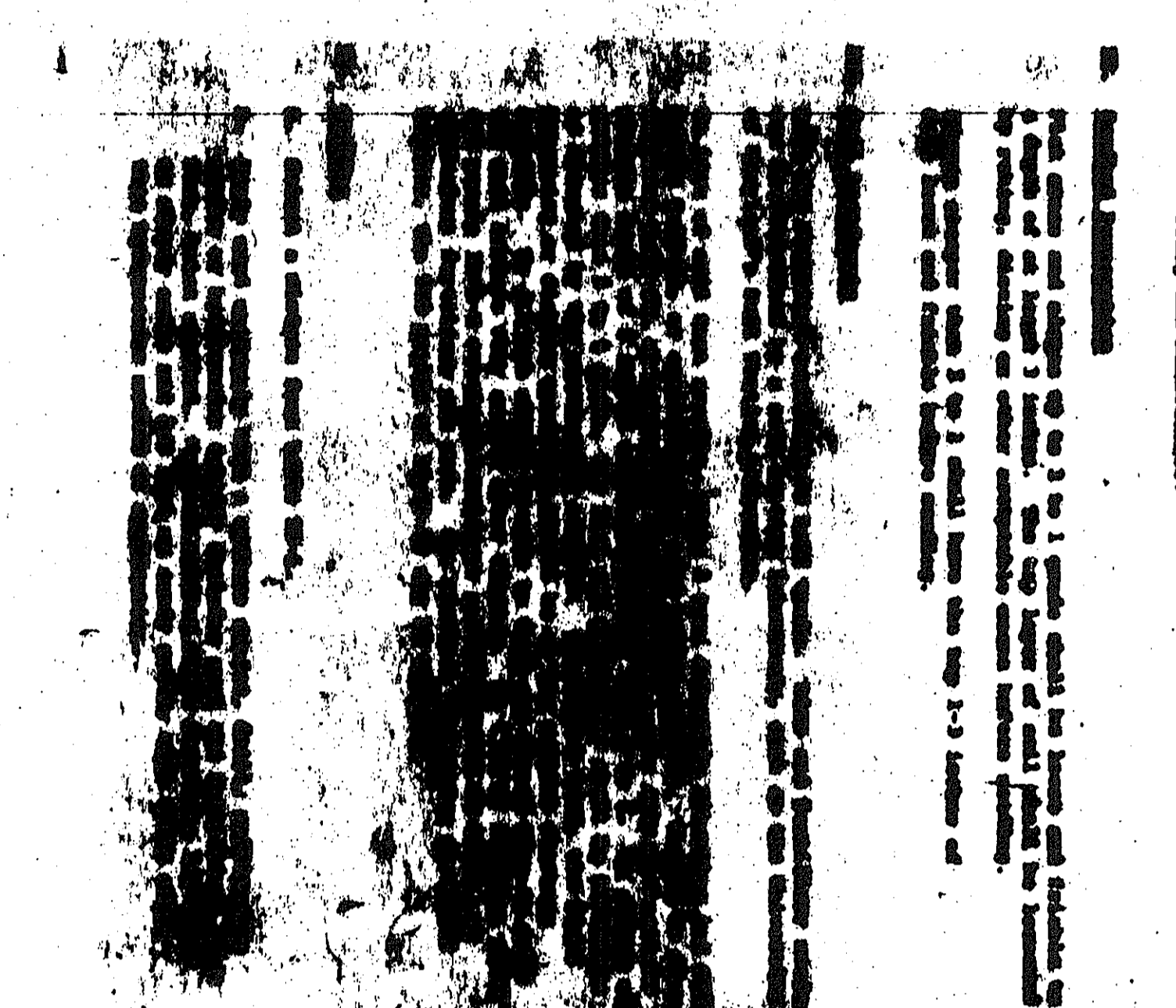
SECTION VIEW



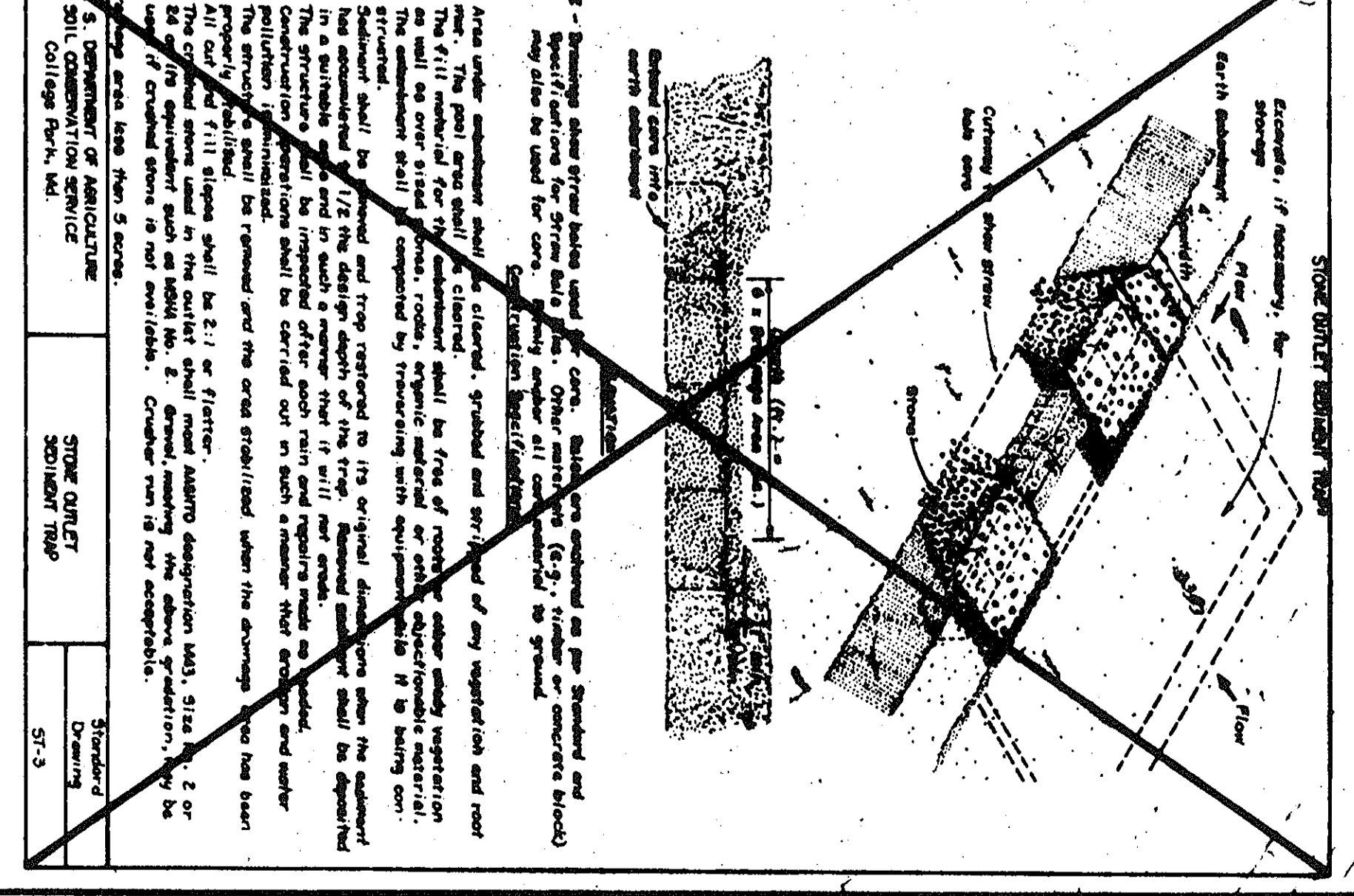
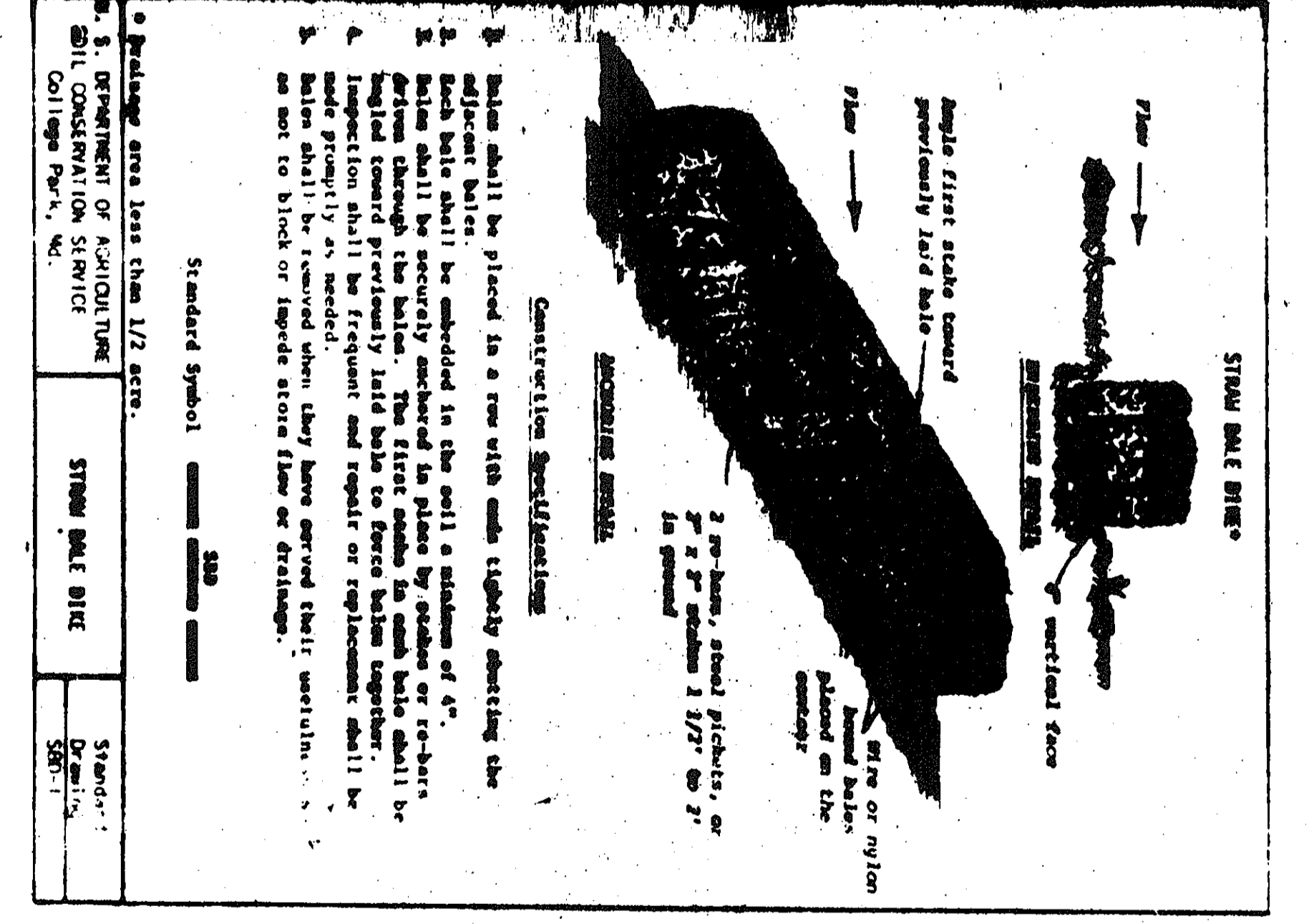
1. Minimum depth to be 18 inches and to be 18 inches wide at the top. The stone shall be 3/4 inch to 1 1/2 inch in diameter. The stone shall be placed in a 6 inch layer on top of the concrete structure. The stone shall be placed in a 6 inch layer on top of the concrete structure. The stone shall be placed in a 6 inch layer on top of the concrete structure.

1. Stone - Stone shall be composed of hard, clean, angular stone of uniform size, ranging from 3/4 inch to 1 1/2 inch in diameter. The stone shall be placed in a 6 inch layer on top of the concrete structure. The stone shall be placed in a 6 inch layer on top of the concrete structure. The stone shall be placed in a 6 inch layer on top of the concrete structure.

2. Gravel - Gravel shall be composed of hard, clean, angular gravel of uniform size, ranging from 1/4 inch to 3/8 inch in diameter. The gravel shall be placed in a 2 inch layer on top of the concrete structure. The gravel shall be placed in a 2 inch layer on top of the concrete structure. The gravel shall be placed in a 2 inch layer on top of the concrete structure.



3. Concrete - Concrete shall be composed of a minimum of 3000 psi concrete. The concrete shall be placed in a 6 inch layer on top of the gravel. The concrete shall be placed in a 6 inch layer on top of the gravel. The concrete shall be placed in a 6 inch layer on top of the gravel.



4. Gravel - Gravel shall be composed of hard, clean, angular gravel of uniform size, ranging from 1/4 inch to 3/8 inch in diameter. The gravel shall be placed in a 2 inch layer on top of the concrete structure. The gravel shall be placed in a 2 inch layer on top of the concrete structure. The gravel shall be placed in a 2 inch layer on top of the concrete structure.

Use Mix No. 1 for This Job

Item No.	Description	Quantity	Unit
1	Concrete	100	cuyd
2	Gravel	200	cuyd
3	Stone	400	cuyd
4	Gravel	200	cuyd
5	Stone	400	cuyd
6	Gravel	200	cuyd
7	Stone	400	cuyd
8	Gravel	200	cuyd
9	Stone	400	cuyd
10	Gravel	200	cuyd
11	Stone	400	cuyd
12	Gravel	200	cuyd
13	Stone	400	cuyd
14	Gravel	200	cuyd
15	Stone	400	cuyd
16	Gravel	200	cuyd
17	Stone	400	cuyd
18	Gravel	200	cuyd
19	Stone	400	cuyd
20	Gravel	200	cuyd
21	Stone	400	cuyd
22	Gravel	200	cuyd
23	Stone	400	cuyd
24	Gravel	200	cuyd
25	Stone	400	cuyd
26	Gravel	200	cuyd
27	Stone	400	cuyd
28	Gravel	200	cuyd
29	Stone	400	cuyd
30	Gravel	200	cuyd

Item No.	Description	Quantity	Unit
1	Concrete	100	cuyd
2	Gravel	200	cuyd
3	Stone	400	cuyd
4	Gravel	200	cuyd
5	Stone	400	cuyd
6	Gravel	200	cuyd
7	Stone	400	cuyd
8	Gravel	200	cuyd
9	Stone	400	cuyd
10	Gravel	200	cuyd
11	Stone	400	cuyd
12	Gravel	200	cuyd
13	Stone	400	cuyd
14	Gravel	200	cuyd
15	Stone	400	cuyd
16	Gravel	200	cuyd
17	Stone	400	cuyd
18	Gravel	200	cuyd
19	Stone	400	cuyd
20	Gravel	200	cuyd
21	Stone	400	cuyd
22	Gravel	200	cuyd
23	Stone	400	cuyd
24	Gravel	200	cuyd
25	Stone	400	cuyd
26	Gravel	200	cuyd
27	Stone	400	cuyd
28	Gravel	200	cuyd
29	Stone	400	cuyd
30	Gravel	200	cuyd

5. Gravel - Gravel shall be composed of hard, clean, angular gravel of uniform size, ranging from 1/4 inch to 3/8 inch in diameter. The gravel shall be placed in a 2 inch layer on top of the concrete structure. The gravel shall be placed in a 2 inch layer on top of the concrete structure. The gravel shall be placed in a 2 inch layer on top of the concrete structure.

APPROVED FOR PUBLIC WATER, PUBLIC SEWERAGE AND STORM DRAINAGE SYSTEMS AND ROADS
HOWARD COUNTY DEPARTMENT OF PUBLIC WORKS

APPROVED FOR PUBLIC WATER AND PUBLIC SEWERAGE SYSTEMS
HOWARD COUNTY HEALTH DEPARTMENT

APPROVED HOWARD COUNTY OFFICE OF PLANNING AND ZONING

HOWARD COUNTY COURTHOUSE
LIBERTY ROAD 559, LIBERTY 227, ROAD 179
LIBERTY ROAD 571, LIBERTY 227, ROAD 186, LIBERTY 227, ROAD 482

ADDITION AND RENOVATION OF
HOWARD COUNTY COURTHOUSE
ELECTION DISTRICT NO. 2, HOWARD COUNTY, MARYLAND

DATE: 3-23-83

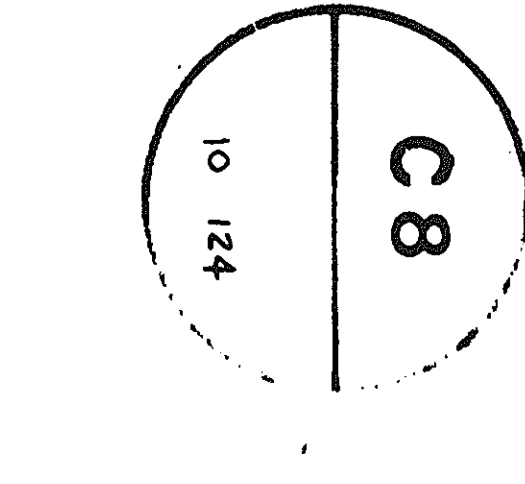
OWNER: HOWARD COUNTY
DESIGNER: HOWARD COUNTY
CONTRACT NO. 83-1001
PROJECT NO. 83-1001

DATE: 3-23-83

SCALE: 1"=20'

DATE: 3-3-85

REVISED



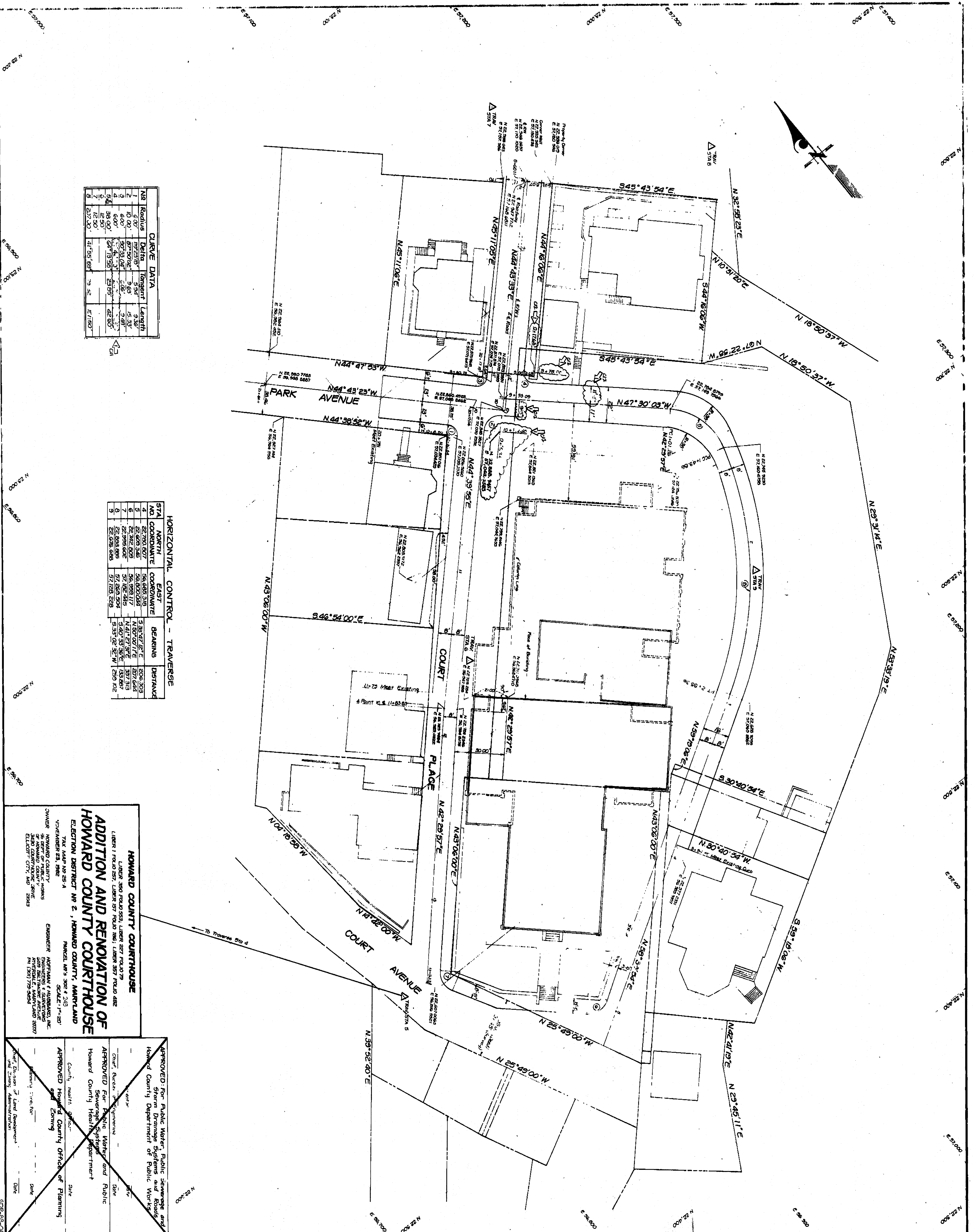
SEDIMENT CONTROL DETAILS

DATE: 3-3-85
REVISED

HOWARD COUNTY
RENOVATION & ADDITION
Ellicott City, Maryland

KDA
Printers
Architects
Designers

Capital Project C 6 0122



CURVE DATA

Sta	Radius	Delta	Tangent	Length
1	6.00'	89°23'06"	5.94'	3.36'
2	10.00'	87°50'02"	9.63'	15.33'
3	6.00'	90°31'04"	5.06'	3.00'
4	18.00'	87°13'53"	17.33'	42.30'
5	12.50'	87°55'00"	12.50'	21.75'
6	537.30'	21°55'00"	99.32'	1271.90'

HORIZONTAL CONTROL - TRAVERSE

STA NO.	NORTH COORDINATE	EAST COORDINATE	BEARING	DISTANCE
1	22,780.007	56,685.310	3°32'27"E	326.303
2	22,429.346	56,800.024	N 60°07'17"E	327.644
3	22,262.009	56,899.117	N 47°27'57"E	337.313
4	22,034.995	57,253.504	S 40°53'36"E	133.887
5	22,076.683	57,153.229	S 37°02'32"W	259.102

HOWARD COUNTY COURTHOUSE
 LIBERTY ROAD 553, LIBERTY ROAD 277, LIBERTY ROAD 482
 LIBERTY ROAD 257, LIBERTY ROAD 1961, LIBERTY ROAD 577, LIBERTY ROAD 482
ADDITION AND RENOVATION OF HOWARD COUNTY COURTHOUSE
 ELECTION DISTRICT NO. 2, HOWARD COUNTY, MARYLAND
 TAX MAP NO. 25-A
 NOVEMBER 23, 1982
 OWNER: HOWARD COUNTY
 ENGINEER: HOFFMAN & HUBBARD, INC.
 3300 CANTONVILLE DRIVE
 ELLICOTT CITY, MD 21043

APPROVED FOR PUBLIC WATER, PUBLIC SEWERAGE AND STORM DRAINAGE SYSTEMS BY HOWARD COUNTY DEPARTMENT OF PUBLIC WORKS

APPROVED FOR PUBLIC WATER AND PUBLIC SEWERAGE SYSTEMS BY HOWARD COUNTY HEALTH DEPARTMENT

APPROVED FOR PLANNING BY HOWARD COUNTY OFFICE OF PLANNING

DATE: _____

C 3

LAYOUT PLAN

APPROVED FOR PLANNING BY HOWARD COUNTY OFFICE OF PLANNING

HOWARD COUNTY

HOWARD COUNTY
RENOVATION &
 Elliott City, Maryland

Capital Project C-6-0122

Planners
 Architects
 Designers

KDA