

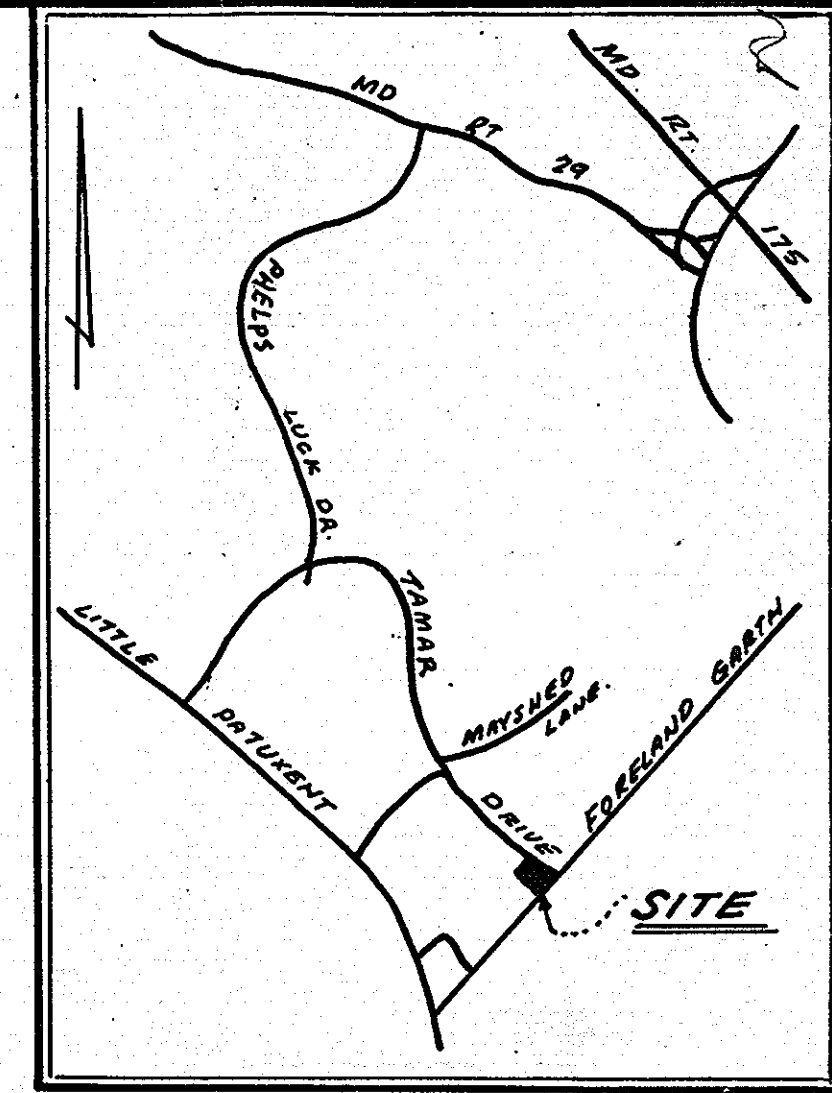
VILLAGE OF LONGREACH  
SEC 1, AREA 4  
Book 21, Folio 64

**DRIVE**

**TAMAR**

**GARTH**

**FORELAND**



**PROPOSED KIOSK ADDITION NOTES:**

- MODIFY EXIST. KIOSK FOR MAX. SECURITY - REMOVE EXIST. GLASS AND INSTALL BULLET RESISTIVE GLASS. INSTALL STEEL PLATES IN LOWER PANELS. SEE DWGS 1249 PROJECT 546.
- INSTALL ADD-ON UTILITY MODULE W/ SPLIT BLOCK VENEER, INSTALL & CONNECT SEWER & WATER LINES TO ON SITE UTILITY LINES. SEE DWGS 1249 PROJECT 546. INSTALL 2" DIA. DOLLARDS. FILL WITH CONC. & PAINT TO MATCH EXISTING DOLLARDS.

**APPROVED**  
PLANNING BOARD  
OF HOWARD COUNTY  
DATE: 1-27-82

NOTE: THIS DEVELOPMENT ACCORDS TO PLANNING BOARD CASE #95.

General Contractor to notify Howard County District Soil Conservation Dept. 24 hours prior to starting any work.

This plan prepared with information obtained from a topographic survey furnished by Maryland Surveying & Engineering Co., Inc. dated 2-5-78

APPROVED SURFACE 5% CONC. DENSITY 5" BIT. CONC. BASE COURSE (SEAL) 1 1/2" BIT. CONC. SURFACE COURSE (SEAL) 1/2" BIT. ASPHALT & TACK COAT (SECTS. C-30 3 & C-34)

HOWARD COUNTY BITUMINOUS PAVING

All materials & construction methods shall be in accordance with the Howard Co. road code & soil specs.

Reviewed for Howard S.C.D. and meets Technical Requirements.

John McNeil DATE 3-23-82

This development plan is approved for soil erosion & sediment control by the Howard Soil Conservation District.

Approved William J. ... DATE 3-23-82

**CERTIFICATION BY DEVELOPER**

I certify that all development and/or construction will be done according to the approved plan for erosion and sediment control, and I also authorize anyone on site inspection by the Howard Soil Conservation District or their authorized agents, as are deemed necessary.

Skulcray DATE 2/7/82

**CERTIFICATION BY THE PROFESSIONAL ENGINEER**

I certify that this plan for erosion and sediment control complies with the requirements of the Howard Soil Conservation District.

2/17/82

Robert J. Conell

1601 ST. PAUL ST.  
BALTO. MD. 21202

721-5590

APPROVED FOR PUBLIC WATER AND PUBLIC SEWERAGE SYSTEMS: HOWARD COUNTY HEALTH DEPT.

4-8-82

James J. ...

APPROVED HOWARD COUNTY OFFICE OF PLANNING & ZONING

4-12-82

James J. ...

4-12-82

James J. ...

APPROVED FOR PUBLIC WATER, PUBLIC SEWERAGE AND STORM DRAINAGE SYSTEMS, AND ROADS: HOWARD COUNTY DEPARTMENT OF PUBLIC WORKS.

3-26-82

James J. ...

3-26-82

James J. ...

THIS BLUEPRINT IS LOANED TO YOU AND MUST BE RETURNED WHEN IT HAS SERVED THE PURPOSE FOR WHICH INTENDED

**CANDY COLUMNS**

Top of all concrete column footings are to terminate at the same elevation. Carry with candy columns is to furnish all of the columns the same length so that 18" minimum clearance is obtained.

1. ALL AND COLUMNS, WALLS OF CONC. ...

2. ...

3. ...

4. ...

5. ...

6. ...

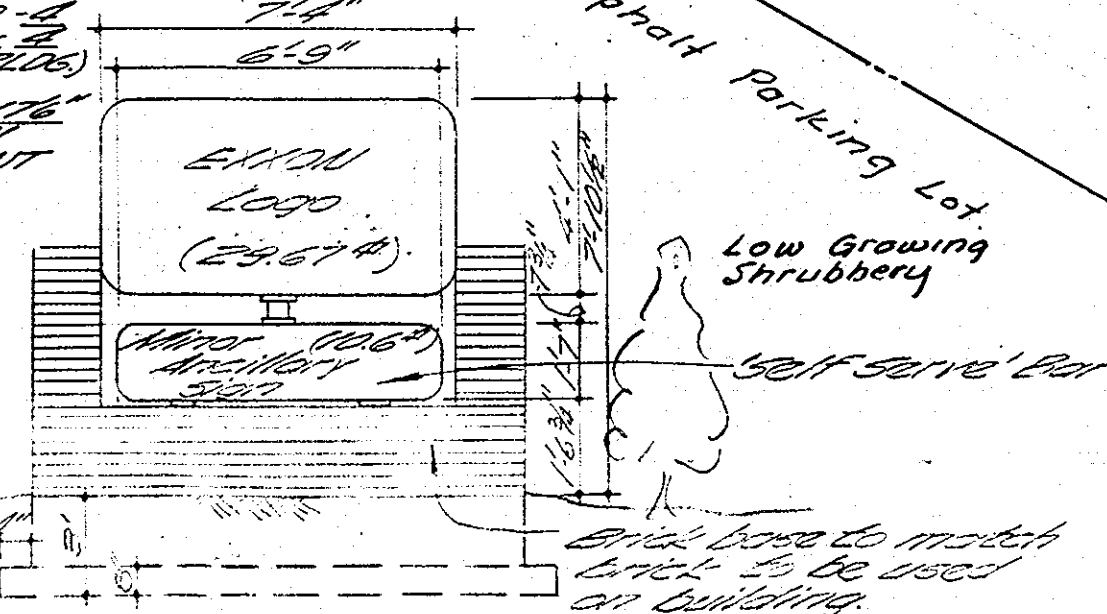
7. ...

8. ...

9. ...

10. ...

11. DEVELOPED AREA - 40,000 sq ft



**EXXON COMPANY, U.S.A.**  
(A DIVISION OF EXXON CORPORATION)  
POST OFFICE BOX 1288  
BALTIMORE, MARYLAND 21203

**PROPOSED ... KIOSK ADDITION**

DRAWN BY: M.L.M./KJB  
CHECKED BY:  
APPROVED BY:  
SCALE: 1" = 20'

COLUMBIA, VILLAGE OF LONGREACH  
SECTION 1, AREA 5  
BOOK 21, FOLIO 82  
PARCEL 'C'  
TAMAR DRIVE & FORELAND GARTH  
COLUMBIA, HOWARD CO., MARYLAND  
6TH ELECTION DISTRICT

DATE: 7-17-75  
FILE NO.: 7226  
SHEET NO.: 1 OF 1  
DWG. NO.: 13

SDP-82-74c